

HAWAII PAPAYAS



National Agricultural Statistics Service

Hawaii Agricultural Statistics Service
 Hawaii Department of Agriculture
 Box 22159, Honolulu, HI 96823-2159
 (808) 973-9588
 FAX (808) 973-2909
 Internet Web Site <http://www.nass.usda.gov/hi>

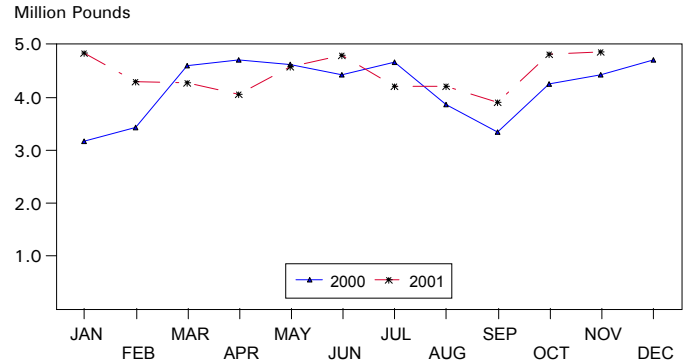
Frequency: Monthly
 Release: December 11, 2001

NOVEMBER FRESH PAPAYA PRODUCTION ESTIMATED AT 4.9 MILLION POUNDS

Hawaii fresh papaya production is estimated at 4.9 million pounds for November, 1 percent higher than last month and 9 percent more than November 2000.

Weather conditions during November were generally wet with occasional sunshine over major papaya producing areas. A winter storm toward months end brought heavy rains. Accompanying winds toppled some trees in exposed areas. Papaya ringspot virus incidence was light in November. However, more Phytophthora disease noticed due to wetter conditions.

FRESH PAPAYA UTILIZATION STATE OF HAWAII, 2000-2001¹



¹2001 Preliminary.

HASS

Papaya growers are expected to receive an estimated 25.0 cents per pound for fresh fruit in November, unchanged from last month, but 19 percent higher (4.0 cents) than last year.

FRESH PAPAYA UTILIZATION, STATE OF HAWAII, MONTH OF: November 2001

Island	Sales				Year ago	Year-to-date	
	Local ¹	Intrastate	Out-of-State	Total fresh		2000	2001
	<i>1,000 pounds</i>						
Hawaii.....	214	1,506	2,380	4,100	3,185	30,285	37,835
Kauai.....	57	23	20	100	180	3,800	1,560
Maui/Molokai/Oahu ²	630	0	20	650	1,065	11,455	9,450
State.....	901	1,529	2,420	4,850	4,430	45,540	48,845

¹ On island of production.

² Combined to avoid disclosure of individual operations.

PAPAYA ACREAGE, STATE OF HAWAII, 2001 WITH COMPARISONS

Island	Total acreage in crop							
	March		June		September		December	
	2000	2001	2000	2001	2000	2001	2000	2001
Hawaii.....	2,100	2,270	1,600	3,000	2,050	2,360	2,040	
Kauai.....	325	120	340	105	235	75	185	
Maui/Molokai/Oahu.....	665	470	645	430	470	255	470	
State.....	3,090	2,860	2,585	3,535	2,755	2,690	2,695	
	Total bearing acres							
Hawaii.....	1,010	1,660	950	1,670	1,300	1,675	1,495	
Kauai.....	185	85	200	80	160	50	125	
Maui/Molokai/Oahu.....	460	280	435	285	265	200	255	
State.....	1,655	2,025	1,585	2,035	1,725	1,925	1,875	

FRESH PAPAYA FARM PRICE, STATE OF HAWAII, 2000-2001

Year	Jan.	Feb.	Mar.	Apr.	May	June	July	Aug.	Sep.	Oct.	Nov.	Dec.	Average
	<i>Cents per pound</i>												
2000	44.9	44.8	38.8	39.6	26.7	25.7	36.3	34.5	30.2	22.7	21.0	21.0	31.6
2001 ¹	21.0	28.0	32.0	37.0	35.0	32.0	33.0	30.0	27.0	25.0	25.0		

¹Preliminary.