

# HAWAII PAPAYAS



National Agricultural Statistics Service

Hawaii Agricultural Statistics Service  
Hawaii Department of Agriculture  
1428 S King Street, Honolulu, HI 96814-2512  
(808) 973-9588  
FAX (808) 973-2909  
Internet Web Site <http://www.nass.usda.gov/hi>

Frequency: Monthly  
Release: December 11, 2003

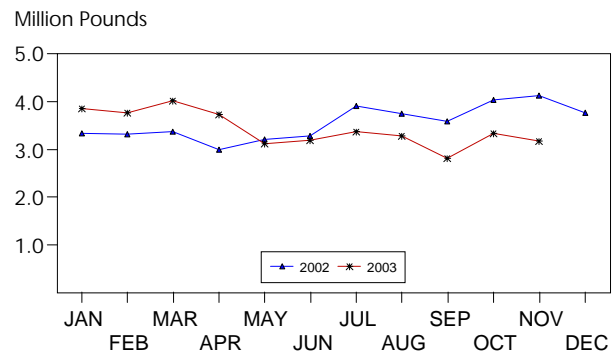
## NOVEMBER FRESH UTILIZATION 5 PERCENT LOWER

Hawaii fresh papaya utilization is estimated at 3.18 million pounds for November 2003, 5 percent lower than last month, and 23 percent lower than November 2002.

Weather conditions were variable during the month of November. Cooler temperatures, shorter day length, and cloudy skies slowed crop progress. Soil moisture has been adequate in non-irrigated orchards.

Papaya growers are expected to receive an estimated 29.0 cents per pound for fresh fruit in November, 6 percent (2.0 cents) lower than last month, but 15 percent (3.7 cents) higher than a year ago.

## FRESH PAPAYA UTILIZATION STATE OF HAWAII, 2002-2003<sup>1</sup>



<sup>1</sup> 2003 Preliminary.

HASS

## FRESH PAPAYA UTILIZATION, STATE OF HAWAII, MONTH OF: November 2003

Island	Sales				Year ago	Year-to-date	
	Local <sup>1</sup>	Intrastate	Out-of-State	Total fresh		2002	2003
	<i>1,000 pounds</i>						
Hawaii.....	124	1,386	1,250	2,760	3,710	32,540	33,050
Kauai.....	30	15	5	50	60	1,050	585
Maui/Molokai/Oahu <sup>2</sup> .....	346	4	20	370	365	5,345	4,055
State.....	500	1,405	1,275	3,180	4,135	38,935	37,690

<sup>1</sup> On island of production.

<sup>2</sup> Combined to avoid disclosure of individual operations.

DONALD A. MARTIN  
State Agricultural Statistician

ARTHUR Y. OSAKI  
Research Statistician

SANDY K. NAKASONE  
Statistical Assistant

**PAPAYA ACREAGE, STATE OF HAWAII, 2003 WITH COMPARISONS**

Island	Total acreage in crop							
	March		June		September		December	
	2002	2003	2002	2003	2002	2003	2002	2003
Hawaii.....	2,200	2,015	1,920	1,925	1,925	2,165	1,925	
Kauai.....	80	55	75	65	60	95	55	
Maui/Molokai/Oahu.....	210	185	210	185	185	105	170	
State.....	2,490	2,255	2,205	2,175	2,170	2,365	2,150	
	Total bearing acres							
Hawaii.....	1,700	1,600	1,490	1,440	1,385	1,430	1,465	
Kauai.....	60	40	60	40	40	80	35	
Maui/Molokai/Oahu.....	170	95	175	95	75	55	80	
State.....	1,930	1,735	1,725	1,575	1,500	1,565	1,580	

**FRESH PAPAYA FARM PRICE, STATE OF HAWAII, 2002-2003**

Year	Jan.	Feb.	Mar.	Apr.	May	June	July	Aug.	Sep.	Oct.	Nov.	Dec.	Average
	<i>Cents per pound</i>												
2002	29.4	29.5	28.3	30.2	30.4	28.3	27.9	27.5	26.9	24.9	25.3	26.1	27.7
2003 <sup>1</sup>	28.0	32.0	35.0	36.0	38.0	38.0	35.0	32.0	34.0	31.0	29.0		

<sup>1</sup>Preliminary.