

# HAWAII PAPAYAS



National Agricultural Statistics Service

Hawaii Agricultural Statistics  
Hawaii Department of Agriculture  
1428 S King Street, Honolulu, HI 96814-2512  
(808) 973-9588  
FAX (808) 973-2909  
Internet Web Site <http://www.nass.usda.gov/hi>

Frequency: Monthly  
Release: December 15, 2004

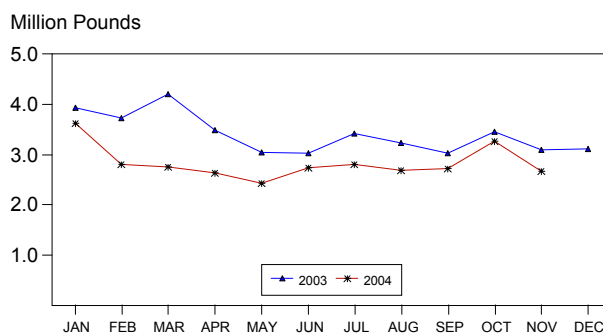
## NOVEMBER FRESH UTILIZATION ESTIMATED AT 2.67 MILLION POUNDS

Hawaii fresh papaya utilization is estimated at 2.67 million pounds for November, down 18 percent from last month and 14 percent lower than a year ago. This is a seasonal production decline as cooler temperatures slow fruit maturation. Year-to-date fresh sales trail the same 11-month period of 2003 by 17 percent.

A mix of showers, sunny and dry periods have kept orchards in mostly good to fair condition. Soil moisture has been adequate in non-irrigated orchards.

Papaya growers are expected to receive an estimated 33.0 cents per pound for fresh fruit in November, down 6 percent (2.0 cents) from October, but 11 percent (3.4 cents) higher than a year ago.

FRESH PAPAYA UTILIZATION  
STATE OF HAWAII, 2003-2004<sup>1</sup>



<sup>1</sup> 2004 Preliminary.

HAS

## FRESH PAPAYA UTILIZATION, STATE OF HAWAII, MONTH OF: November 2004

| Island                               | Sales               |            |              |             | Year ago | Year-to-date |        |
|--------------------------------------|---------------------|------------|--------------|-------------|----------|--------------|--------|
|                                      | Local <sup>1</sup>  | Intrastate | Out-of-State | Total fresh |          | 2003         | 2004   |
|                                      | <i>1,000 pounds</i> |            |              |             |          |              |        |
| Hawaii.....                          | 139                 | 1,141      | 1,050        | 2,330       | 2,685    | 33,040       | 27,500 |
| Kauai.....                           | 42                  | 3          | 0            | 45          | 50       | 590          | 510    |
| Maui/Molokai/Oahu <sup>2</sup> ..... | 214                 | 6          | 70           | 290         | 370      | 4,055        | 3,145  |
| State.....                           | 395                 | 1,150      | 1,120        | 2,665       | 3,105    | 37,685       | 31,155 |

<sup>1</sup> On island of production.

<sup>2</sup> Combined to avoid disclosure of individual operations.

MARK E. HUDSON  
Director

STEVE P. GUNN  
Deputy Director

ARTHUR Y. OSAKI  
Research Statistician

SANDY K. NAKASONE  
Statistical Assistant

**PAPAYA ACREAGE, STATE OF HAWAII, 2004 WITH COMPARISONS**

| Island                 | Total acreage in crop |       |       |       |           |                   |          |      |
|------------------------|-----------------------|-------|-------|-------|-----------|-------------------|----------|------|
|                        | March                 |       | June  |       | September |                   | December |      |
|                        | 2003                  | 2004  | 2003  | 2004  | 2003      | 2004 <sup>1</sup> | 2003     | 2004 |
| Hawaii.....            | 2,005                 | 1,900 | 1,915 | 1,800 | 2,155     | 1,920             | 1,990    |      |
| Kauai.....             | 60                    | 50    | 65    | 40    | 45        | 40                | 50       |      |
| Maui/Molokai/Oahu..... | 195                   | 160   | 190   | 160   | 170       | 150               | 170      |      |
| State.....             | 2,260                 | 2,110 | 2,170 | 2,000 | 2,370     | 2,110             | 2,210    |      |
|                        | Total bearing acres   |       |       |       |           |                   |          |      |
| Hawaii.....            | 1,375                 | 1,000 | 1,430 | 900   | 1,420     | 1,220             | 1,195    |      |
| Kauai.....             | 40                    | 40    | 40    | 30    | 30        | 25                | 35       |      |
| Maui/Molokai/Oahu..... | 100                   | 125   | 105   | 125   | 115       | 125               | 120      |      |
| State.....             | 1,515                 | 1,165 | 1,575 | 1,055 | 1,565     | 1,370             | 1,350    |      |

<sup>1</sup> Revised.

**FRESH PAPAYA FARM PRICE, STATE OF HAWAII, 2003-2004**

| Year              | Jan.                   | Feb. | Mar. | Apr. | May  | June | July | Aug. | Sep. | Oct. | Nov. | Dec. | Average |
|-------------------|------------------------|------|------|------|------|------|------|------|------|------|------|------|---------|
|                   | <i>Cents per pound</i> |      |      |      |      |      |      |      |      |      |      |      |         |
| 2003              | 30.7                   | 32.6 | 32.8 | 34.1 | 33.8 | 35.0 | 31.8 | 30.1 | 31.1 | 31.6 | 29.6 | 30.8 | 32.0    |
| 2004 <sup>1</sup> | 30.0                   | 31.0 | 39.0 | 45.0 | 53.0 | 37.0 | 41.0 | 37.0 | 37.0 | 35.0 | 33.0 |      |         |

<sup>1</sup> Preliminary.