

HAWAII PAPAYAS



National Agricultural Statistics Service

Hawaii Agricultural Statistics Service
Hawaii Department of Agriculture
1428 S King Street, Honolulu, HI 96814-2512
(808) 973-9588
FAX (808) 973-2909
Internet Web Site <http://www.nass.usda.gov/hi>

Frequency: Monthly
Release: January 13, 2004

DECEMBER FRESH UTILIZATION BELOW A YEAR AGO

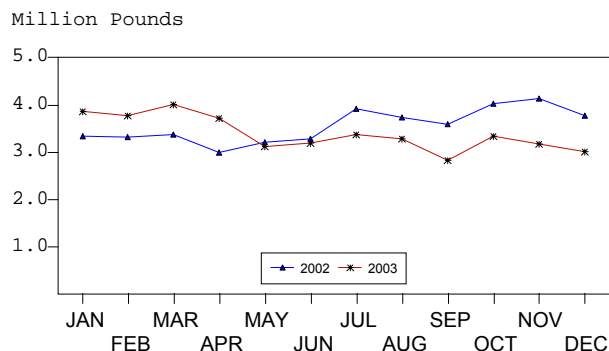
Hawaii fresh papaya utilization is estimated at 3.01 million pounds for December 2003, 5 percent lower than last month, and 20 percent lower than December 2002.

Area in crop totaled 2,210 acres, 7 percent lower than September, but 3 percent more than a year ago. Harvested area totaled 1,345 acres, 14 percent below September, and 15 percent below a year ago.

Weather conditions were variable during the month of December. Cooler temperatures and shorter day length slowed crop progress. Soil moisture was adequate in non-irrigated orchards.

Papaya growers are expected to receive an estimated 29.0 cents per pound for fresh fruit in December, unchanged from last month, but 11 percent (2.9 cents) higher than a year ago.

FRESH PAPAYA UTILIZATION STATE OF HAWAII, 2002-2003¹



¹ 2003 Preliminary.

HASS

FRESH PAPAYA UTILIZATION, STATE OF HAWAII, MONTH OF: December 2003

Island	Sales				Year ago	Year-to-date	
	Local ¹	Intrastate	Out-of-State	Total fresh		2002	2003
	<i>1,000 pounds</i>						
Hawaii.....	117	1,328	1,150	2,595	3,340	35,880	35,645
Kauai.....	39	6	0	45	60	1,110	630
Maui/Molokai/Oahu ²	347	3	20	370	365	5,710	4,425
State.....	503	1,337	1,170	3,010	3,765	42,700	40,700

¹ On island of production.

² Combined to avoid disclosure of individual operations.

DONALD A. MARTIN
State Agricultural Statistician

ARTHUR Y. OSAKI
Research Statistician

SANDY K. NAKASONE
Statistical Assistant

PAPAYA ACREAGE, STATE OF HAWAII, 2003 WITH COMPARISONS

Island	Total acreage in crop							
	March		June		September		December	
	2002	2003	2002	2003	2002	2003	2002	2003
Hawaii.....	2,200	2,015	1,920	1,925	1,925	2,165	1,925	2,000
Kauai.....	80	55	75	65	60	95	55	50
Maui/Molokai/Oahu.....	210	185	210	185	185	105	170	160
State.....	2,490	2,255	2,205	2,175	2,170	2,365	2,150	2,210

Total bearing acres								
Hawaii.....	1,700	1,600	1,490	1,440	1,385	1,430	1,465	1,200
Kauai.....	60	40	60	40	40	80	35	35
Maui/Molokai/Oahu.....	170	95	175	95	75	55	80	110
State.....	1,930	1,735	1,725	1,575	1,500	1,565	1,580	1,345

FRESH PAPAYA FARM PRICE, STATE OF HAWAII, 2002-2003

Year	Jan.	Feb.	Mar.	Apr.	May	June	July	Aug.	Sep.	Oct.	Nov.	Dec.	Average
	<i>Cents per pound</i>												
2002	29.4	29.5	28.3	30.2	30.4	28.3	27.9	27.5	26.9	24.9	25.3	26.1	27.7
2003 ¹	28.0	32.0	35.0	36.0	38.0	38.0	35.0	32.0	34.0	31.0	29.0	29.0	

¹Preliminary.

U.S. Department of Agriculture
 Hawaii Agricultural Statistics Service
 1428 S King Street
 Honolulu, HI 96814-2512

PRESORTED STANDARD Postage and Fees Paid NATIONAL AGRICULTURAL STATISTICS SERVICE Permit No. G-38

OFFICIAL BUSINESS
 PENALTY FOR PRIVATE USE, \$300

RETURN SERVICE REQUESTED