



HAWAII PAPAYAS

In cooperation with:
Department of Agriculture
STATE OF HAWAII
 Agricultural Development Division
 Market Analysis and News Branch

National Agricultural Statistics Service
 USDA, Hawaii Field Office
 1428 S. King Street
 Honolulu, HI 96814-2512
 Telephone: (808) 973-9588
 FAX: (808) 973-2909
 Internet Web Site <http://www.nass.usda.gov/hi>



Frequency: Monthly

Release: February 12, 2009

2008 FRESH PAPAYA SLIGHTLY DOWN FROM LAST YEAR

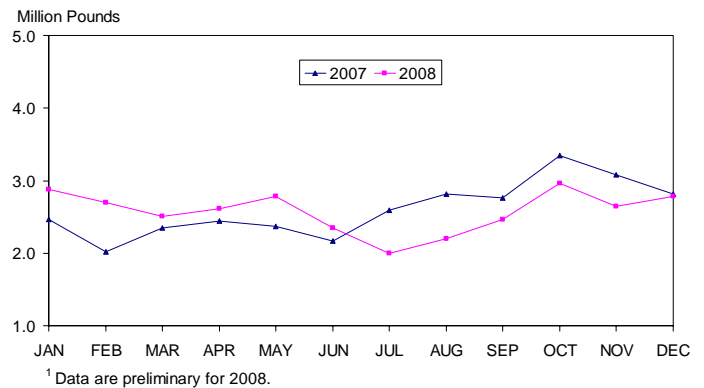
Hawaii fresh papaya utilization for 2008 is estimated at 30.9 million pounds, down 1 percent from 2007. In December 2008, the output is estimated at 2.8 million pounds, 5 percent greater than November, but 1 percent less than December 2007.

Total in crop acreage for December is estimated at 2,410, up 9 percent from September and 17 percent above December 2007. Harvested area totaled 1,465 acres in December, 14 percent more than September and increasing 17 percent from December 2007.

Cool and wet weather prevailed during most of December. Drier areas benefited from added soil moisture and spurred tree growth. New fields were being prepared for plantings. Other areas experienced continuous heavy rains, flooding, and soil erosion. As a result, crop progress was slowed and field maintenance was hampered. Spraying efforts were limited in controlling disease, causing a concern for some growers. Weed growth has also increased with recent rains.

Papaya growers are expected to receive an estimated 38.0 cents per pound for fresh fruit in December, 3 percent (1.0 cent) less than November and 4 percent (1.7 cents) below December 2007.

PAPAYA: Fresh Utilization, State of Hawaii, 2007-2008¹



FRESH PAPAYA UTILIZATION, STATE OF HAWAII, 2008 WITH COMPARISONS¹

Month	Sales				Year ago	Year-to-date	
	Local ²	Intrastate	Out-of-State	Total fresh		2007	2008
	<i>1,000 pounds</i>						
November	265	1,130	1,250	2,645	3,075	28,390	28,095
December	243	1,177	1,365	2,785	2,810	31,200	30,880

¹ Data are preliminary for 2008.

² On island of production.

PAPAYA: Acreage in crop, by county, 2008 with comparisons ¹

County	Total acreage in crop							
	March		June		September		December	
	2007	2008	2007	2008	2007	2008	2007	2008
Hawaii.....	1,895	1,820	1,710	1,840	1,905	2,020	1,865	2,220
Honolulu/Kauai/Maui ²	185	200	195	200	200	185	190	190
State.....	2,080	2,020	1,905	2,040	2,105	2,205	2,055	2,410

Total bearing acres ³								
Hawaii.....	1,175	1,300	1,075	1,200	1,240	1,150	1,135	1,335
Honolulu/Kauai/Maui ²	120	125	125	130	135	130	120	130
State.....	1,295	1,425	1,200	1,330	1,375	1,280	1,255	1,465

¹ Data are preliminary for 2008.

² Kauai and Maui combined with Honolulu to avoid disclosure of individual operations.

³ Bearing acres where papayas were harvested.

PAPAYA: Fresh farm price, by State, 2007-2008

Year	Jan.	Feb.	Mar.	Apr.	May	June	July	Aug.	Sep.	Oct.	Nov.	Dec.	Average
	<i>Cents per pound</i>												
2007	39.8	41.9	45.0	46.1	46.6	49.4	45.8	38.1	37.1	37.8	38.3	39.7	41.7
2008 ¹	41.0	43.0	50.0	51.0	53.0	51.0	52.0	50.0	47.0	43.0	39.0	38.0	

¹ Preliminary.

MARK E. HUDSON
Director

KING J. WHETSTONE
Deputy Director

REGINA W. HIDANO
Agricultural Statistician

SANDY K. NAKASONE
Statistical Assistant

Contributions by:

NAOMI LANDGRAF
Maui County

DAVID MATTICE
Hawaii County

JUNE OKAMURA
Honolulu County & Kauai County

NASDA ENUMERATORS