

HAWAII PINEAPPLES

Annual Summary

DONALD A. MARTIN
State Agricultural Statistician

ARTHUR OSAKI
Research Statistician



Hawaii Agricultural
Statistics Service

Fact Finders For Agriculture

Hawaii Department of Agriculture
U.S. Department of Agriculture
P.O. Box 22159
Honolulu, HI 96823-2159
(808) 973-9588

FREQUENCY: Annual
RELEASE DATE: February 15, 2001

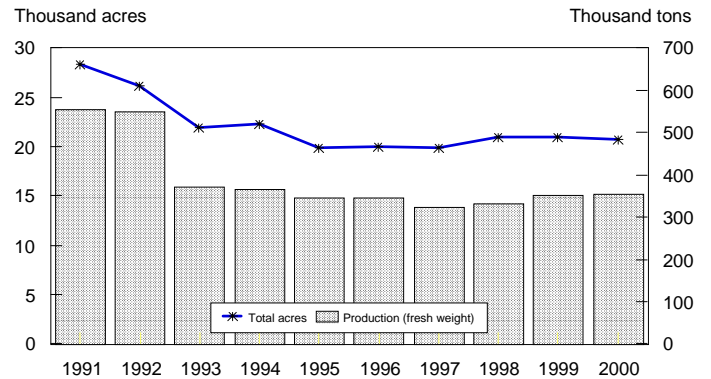
2000 PINEAPPLE OUTPUT SLIGHTLY HIGHER

Hawaii's 2000 pineapple production is estimated at 354,000 tons, 1 percent higher than 1999. According to the *Hawaii Agricultural Statistics Service*, fresh sales of 122,000 tons were unchanged from 1999. Processed utilization, totaling 232,000 tons, was 1 percent higher than a year ago.

Total area remained decreased 1 percent to 20,700 acres. Rainfall was below normal for 2000, affecting fruit size in some areas. However, favorable market conditions in 2000 improved utilization of fresh fruit in the extreme ends of availability.

The equivalent farm value of the 2000 pineapple crop is estimated at \$101.5 million, nearly unchanged from the revised 1999 figure of \$101.4 million. The farm gate price of pineapple utilized as processed fruit was pegged at \$130 a ton. Fresh market sales averaged \$585 a ton, 2 percent lower than a year ago.

PINEAPPLES: Production and acreage
State of Hawaii, 1991-2000



HASS

PINEAPPLES: Value of fresh market and processed utilization, State of Hawaii, 1996-2000

PINEAPPLES: Number of farms, acreage, production, disposition, price, and value,
State of Hawaii, 1996-2000

Year	Farms ¹	Acreage used for crop	Production (fresh weight)	Disposition		Farm price		Value of production (fresh weight)
				Processed (fresh weight)	Fresh market	Processed ²	Fresh market ³	
	Number	1,000 acres	1,000 tons	1,000 tons		Dollars per ton		Thousand dollars
1996	15	20.0	347	232	115	117	598	95,914
1997	15	19.9	324	221	103	127	618	91,721
1998	15	21.0	332	221	111	131	575	92,776
1999	15	21.0	352	230	122	126	594	101,448
2000	15	20.7	354	232	122	130	585	101,530

¹ Includes specialty pineapple.

² Estimate to reflect value of fresh fruit delivered processing plant door based on average contract prices of independent growers.

³ Estimate to reflect value at wholesale establishments for local sales and shipper dock for mainland and foreign sales.

Year	Fresh market sales ¹		Processor value of canned fruit and juice production ³	Total value: Fresh market and processed ⁴
	Quantity	Value ²		
	----- 1,000 tons -----		----- Million dollars -----	
1996	115	68.8	78.2	147.0
1997	103	63.7	73.0	136.7
1998	111	63.8	81.3	145.1
1999	122	72.5	72.3	144.8
2000	122	71.4	*	*

* = Available in July. ¹ Includes "fresh cut". ² Value FAS shipping point for outshipments, delivered wholesalers local sales. ³ Value of canned fruit and juices and by-product shipped out-of-State and sold within State. ⁴ Pineapple Growers Association of Hawaii.

PINEAPPLES: Outshipments of fresh pineapples, State of Hawaii, 1996-2000 ¹

Year	Jan.	Feb.	Mar.	Apr.	May	June	July	Aug.	Sep.	Oct.	Nov.	Dec.	Total
	<i>1,000 pounds</i>												
1996	16,211	15,682	19,437	15,894	16,460	14,827	19,168	15,645	12,166	16,166	15,249	13,187	190,092
1997	12,892	12,771	18,014	12,686	15,916	15,403	19,096	11,882	12,919	14,609	12,647	13,765	172,600
1998	12,109	11,237	17,451	13,841	13,248	14,618	18,926	16,245	12,498	16,518	15,532	17,695	179,918
1999	13,564	12,237	18,052	16,603	18,477	18,805	20,645	13,305	15,929	16,490	17,700	15,388	197,195
2000	14,692	14,022	18,769	21,214	21,773	22,782	17,877	17,040	13,197	16,451	16,718	14,806	209,341

¹ Excludes "fresh-cut".

Source of outshipment data: Market Analysis and News Branch of the State Department of Agriculture.

U.S. Department of Agriculture
Hawaii Agricultural Statistics Service
P.O. Box 22159
Honolulu, Hawaii 96823-2159

OFFICIAL BUSINESS
PENALTY FOR PRIVATE USE, \$300

Return Service Requested

Pineapple release