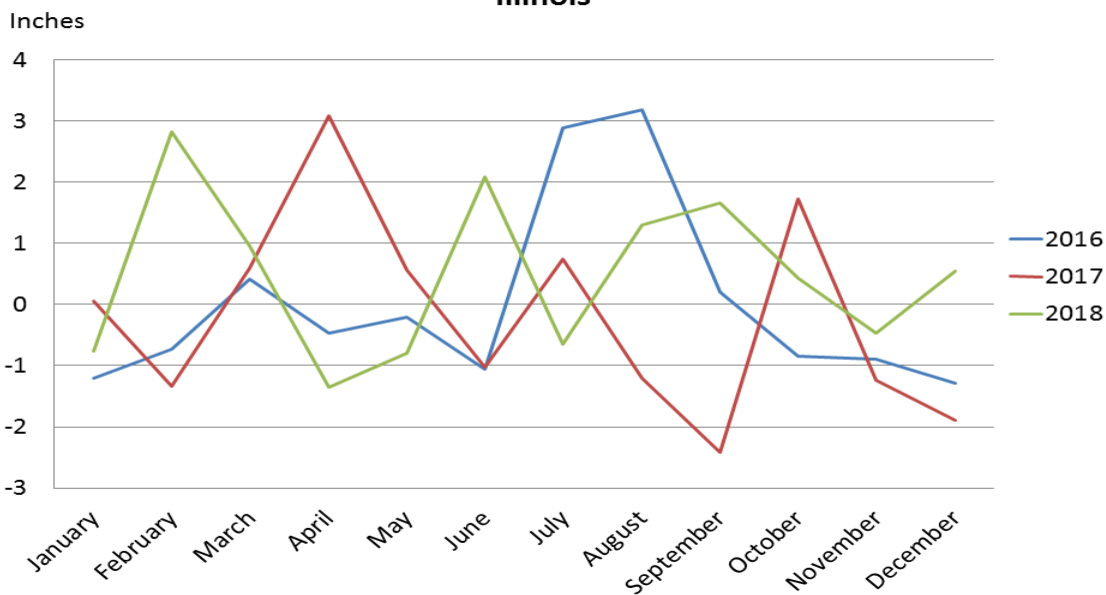
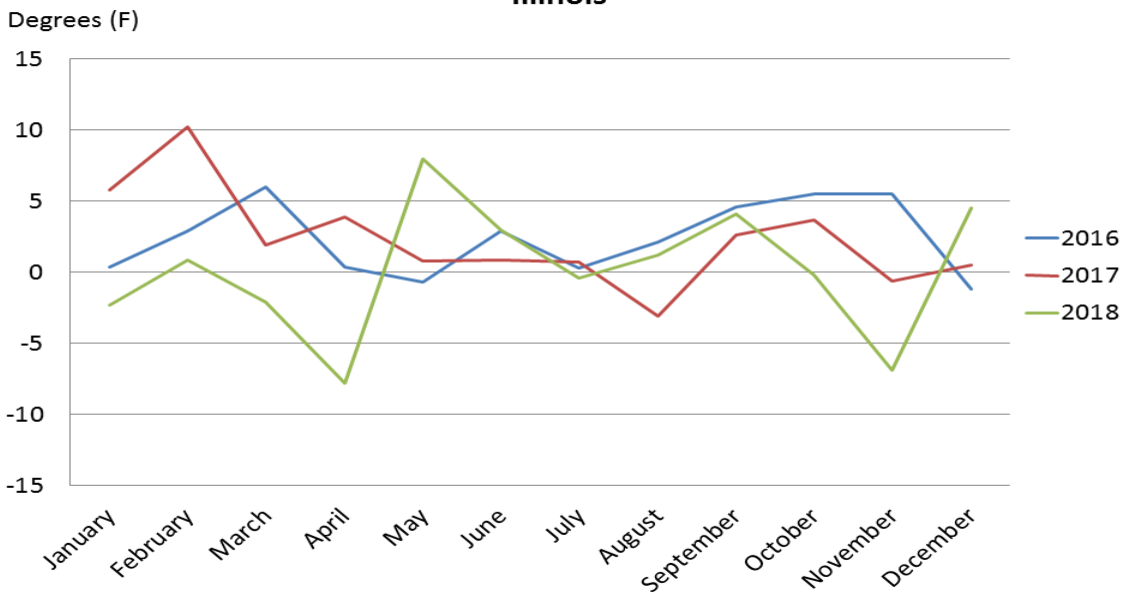


## Annual Weather Summary – Illinois 2018

### Precipitation Departure from Normal Illinois



### Temperature Departure from Normal Illinois



**Precipitation by District – Illinois: Average (1981-2010), 2017, and 2018**

District and State	Jan	Feb	Mar	Apr	May	Jun	Jul	Aug	Sep	Oct	Nov	Dec	Annual
	(inches)	(inches)	(inches)	(inches)	(inches)	(inches)	(inches)	(inches)	(inches)	(inches)	(inches)	(inches)	(inches)
<b>Northwest</b>													
Average .....	1.42	1.54	2.44	3.43	4.19	4.59	4.04	4.28	3.35	2.92	2.69	2.05	36.93
2017 .....	2.05	0.96	3.75	5.66	4.83	4.30	8.04	1.87	0.77	5.92	1.26	0.54	39.95
2018 .....	0.97	3.48	2.30	1.20	4.81	7.45	3.55	6.03	5.92	5.00	2.50	2.20	45.41
<b>Northeast</b>													
Average .....	1.68	1.61	2.36	3.44	4.13	4.06	3.99	4.08	3.30	2.95	3.04	2.19	36.83
2017 .....	2.54	1.15	4.37	5.56	4.66	4.34	6.99	2.39	0.50	7.50	2.02	0.41	42.43
2018 .....	1.35	3.98	1.48	1.75	5.21	7.19	2.24	4.45	3.92	4.76	2.38	2.25	40.96
<b>West</b>													
Average .....	1.60	1.77	2.68	3.76	4.66	4.40	4.24	3.78	3.52	3.03	2.95	2.26	38.65
2017 .....	1.39	0.57	3.45	6.05	4.76	2.27	4.21	3.54	0.65	4.95	1.67	0.55	34.06
2018 .....	1.04	3.89	3.73	1.27	2.71	3.87	3.02	6.20	5.63	5.49	2.69	1.92	41.46
<b>Central</b>													
Average .....	1.85	1.81	2.68	3.62	4.38	4.08	4.11	3.65	3.13	3.09	3.25	2.48	38.12
2017 .....	1.68	0.69	3.80	5.99	3.92	2.30	4.41	2.32	0.70	4.57	2.06	0.52	32.96
2018 .....	1.10	4.29	3.32	1.95	3.61	5.29	3.55	4.41	3.21	4.63	2.54	3.10	41.00
<b>East</b>													
Average .....	1.94	1.83	2.66	3.61	4.33	4.14	4.34	3.63	2.98	3.19	3.39	2.51	38.56
2017 .....	2.90	1.00	3.20	5.05	5.35	3.46	4.35	3.35	1.17	4.88	2.92	0.46	38.09
2018 .....	0.91	5.13	2.63	2.21	2.86	6.27	3.59	3.78	3.78	3.80	2.82	2.92	40.70
<b>West Southwest</b>													
Average .....	2.05	2.06	2.92	3.79	4.62	4.13	3.99	3.30	3.25	3.23	3.63	2.68	39.65
2017 .....	1.37	0.38	3.68	7.87	5.75	2.80	4.11	2.21	0.77	3.93	1.31	0.49	34.67
2018 .....	1.24	4.30	4.89	2.29	3.35	4.65	4.18	5.27	2.48	2.93	2.66	3.27	41.51
<b>East Southeast</b>													
Average .....	2.49	2.35	3.27	3.98	4.89	4.20	4.17	3.21	3.11	3.52	3.96	3.05	42.20
2017 .....	2.59	0.43	2.73	7.09	6.50	2.76	4.11	1.72	0.81	5.21	3.24	0.91	38.10
2018 .....	1.29	5.09	5.40	3.71	2.87	8.41	4.47	4.95	5.66	2.07	3.52	3.83	51.27
<b>Southwest</b>													
Average .....	2.76	2.80	3.83	4.19	5.11	4.12	3.87	3.08	3.27	3.71	4.23	3.51	44.48
2017 .....	2.18	0.60	3.46	10.11	5.44	3.09	2.98	2.34	0.88	3.30	2.84	1.60	38.82
2018 .....	1.65	7.45	6.25	3.81	4.60	5.75	2.97	4.86	6.94	2.14	4.04	5.20	55.66
<b>Southeast</b>													
Average .....	3.12	3.09	4.16	4.36	5.30	4.11	3.96	3.11	3.13	3.70	4.28	3.81	46.12
2017 .....	2.54	0.82	3.55	9.13	4.97	3.14	3.15	2.09	1.25	3.83	3.33	2.07	39.87
2018 .....	2.39	7.51	5.74	3.97	4.29	7.27	2.87	3.64	7.69	2.01	4.37	5.03	56.78
<b>Illinois</b>													
Average .....	2.07	2.06	2.96	3.78	4.60	4.21	4.08	3.59	3.23	3.24	3.47	2.69	39.96
2017 .....	2.12	0.73	3.56	6.86	5.17	3.18	4.82	2.39	0.82	4.97	2.24	0.79	37.65
2018 .....	1.30	4.88	3.91	2.42	3.80	6.29	3.44	4.89	4.90	3.67	3.01	3.23	45.74

Weather data provided by the Midwestern Regional Climate Center: <http://mrcc.isws.illinois.edu>

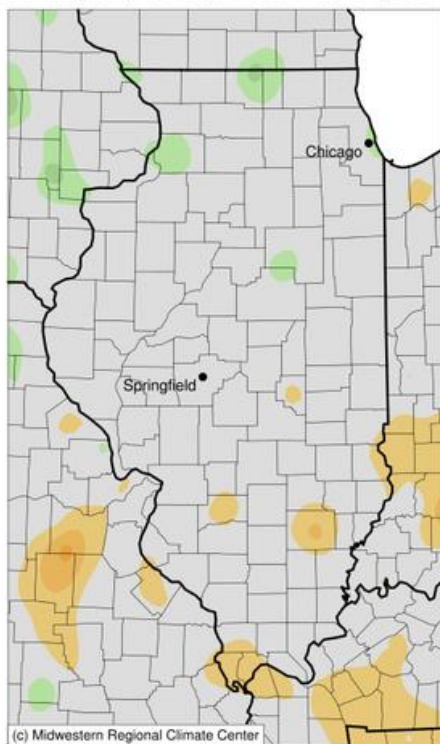
## Temperature by District – Illinois: Average (1981-2010), 2017, and 2018

District and State	Jan	Feb	Mar	Apr	May	Jun	Jul	Aug	Sep	Oct	Nov	Dec	Annual
	(F)	(F)	(F)	(F)	(F)	(F)	(F)	(F)	(F)	(F)	(F)	(F)	(F)
<b>Northwest</b>													
Average .....	21.4	26.2	37.6	49.7	60.4	69.8	73.4	71.4	63.7	51.6	38.9	25.3	49.1
2017 .....	26.8	36.7	38.9	52.7	58.4	71.1	73.2	67.9	66.4	55.7	37.1	26.2	50.9
2018 .....	20.4	24.2	36.0	40.4	67.4	72.2	72.9	72.7	66.9	50.0	32.2	30.4	48.8
<b>Northeast</b>													
Average .....	22.6	27.1	37.6	49.2	59.7	69.3	73.4	71.5	64.1	52.1	39.8	26.6	49.4
2017 .....	27.9	36.8	38.2	52.8	57.2	70.5	72.7	68.8	67.1	56.2	37.7	26.3	51.0
2018 .....	21.5	26.2	36.0	40.2	66.1	70.8	73.2	73.5	67.4	50.7	33.2	31.4	49.2
<b>West</b>													
Average .....	25.0	29.6	40.6	52.2	62.5	71.8	75.5	73.6	65.8	53.9	41.5	28.5	51.7
2017 .....	29.6	40.3	42.6	55.4	61.7	72.8	76.3	70.1	68.6	57.2	40.3	29.8	53.7
2018 .....	23.2	29.0	38.6	43.7	71.2	75.6	75.2	75.2	69.6	52.8	34.3	32.9	51.8
<b>Central</b>													
Average .....	24.9	29.5	40.3	51.9	62.3	71.6	74.8	72.9	65.7	53.8	41.5	28.6	51.5
2017 .....	30.9	40.2	42.2	56.1	61.4	72.9	75.5	70.0	68.4	57.9	41.0	29.1	53.8
2018 .....	23.3	30.2	38.0	44.2	71.2	74.6	74.0	74.6	70.1	53.5	34.6	33.5	51.8
<b>East</b>													
Average .....	24.8	29.3	39.8	51.3	61.8	71.3	74.2	72.3	65.5	53.6	41.5	28.6	51.2
2017 .....	31.2	40.0	41.5	55.6	60.4	72.4	74.5	69.4	67.9	57.6	40.6	28.8	53.3
2018 .....	22.1	30.5	37.4	43.5	70.1	73.8	73.8	74.0	69.8	53.6	34.9	33.3	51.4
<b>West Southwest</b>													
Average .....	28.1	32.8	43.0	54.0	63.8	72.9	76.4	74.8	67.1	55.6	44.0	31.4	53.7
2017 .....	33.5	43.0	45.4	58.0	63.8	73.9	78.3	71.6	69.9	59.1	44.4	32.1	56.1
2018 .....	26.1	34.3	40.6	46.6	72.6	76.7	75.9	75.5	71.5	55.8	35.9	35.4	53.9
<b>East Southeast</b>													
Average .....	28.5	32.9	43.0	54.0	63.8	73.0	76.2	74.5	67.3	55.7	44.1	31.9	53.7
2017 .....	34.6	43.0	45.0	58.0	63.6	73.0	77.2	71.4	69.7	58.9	44.1	32.3	55.9
2018 .....	25.3	35.8	40.6	46.6	72.4	75.8	75.5	75.1	71.8	56.2	37.2	36.1	54.0
<b>Southwest</b>													
Average .....	31.9	36.4	45.9	56.2	65.5	74.3	77.8	76.4	68.6	57.4	46.3	34.7	55.9
2017 .....	38.0	46.0	48.3	60.4	66.0	74.6	79.5	73.3	70.8	60.7	46.8	35.3	58.3
2018 .....	28.2	39.0	44.0	49.6	73.1	78.2	78.3	76.5	73.2	58.5	39.6	39.2	56.4
<b>Southeast</b>													
Average .....	32.0	36.3	45.8	56.0	65.3	74.0	77.5	76.1	68.7	57.3	46.3	34.8	55.8
2017 .....	39.3	46.1	48.6	60.6	66.3	74.2	78.9	73.2	70.7	60.2	46.1	35.2	58.3
2018 .....	28.1	39.7	43.6	49.9	73.0	77.4	77.5	76.3	73.4	58.1	39.6	39.2	56.3
<b>Illinois</b>													
Average .....	26.4	30.9	41.3	52.6	62.7	71.9	75.4	73.6	66.2	54.4	42.5	29.9	52.4
2017 .....	32.2	41.1	43.2	56.5	61.9	72.8	76.1	70.5	68.8	58.1	41.9	30.4	54.5
2018 .....	24.1	31.8	39.2	44.8	70.7	74.9	75.0	74.8	70.3	54.2	35.6	34.4	52.6

Weather data provided by the Midwestern Regional Climate Center: <http://mrcc.isws.illinois.edu>

## Average Temperature (°F): Departure from 1981-2010 Normals

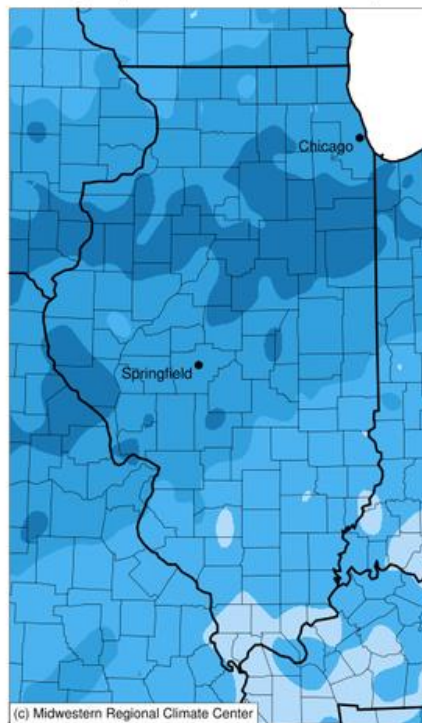
January 01, 2018 to December 31, 2018



Stations from the following networks used: WBAN, COOP, FAA, GHCN, ThreadEx, CoCoRaHS, WMO, ICAO, NWSLI, Midwestern Regional Climate Center  
cli-MATE: MRCC Application Tools Environment  
Generated at: 2/26/2019 11:40:18 AM CST

## Accumulated Precipitation (in)

January 01, 2018 to December 31, 2018



Stations from the following networks used: WBAN, COOP, FAA, GHCN, ThreadEx, CoCoRaHS, WMO, ICAO, NWSLI, Missouri FSA, Missouri Mesonet, Midwestern Regional Climate Center  
cli-MATE: MRCC Application Tools Environment  
Generated at: 2/26/2019 11:37:46 AM CST

## Access to NASS Reports

For your convenience, you may access NASS reports and products the following ways:

- All reports are available electronically, at no cost, on the NASS web site: <http://www.nass.usda.gov>
- Both national and state specific reports are available via a free e-mail subscription. To set-up this free subscription, visit <http://www.nass.usda.gov> and in the “Follow NASS” box under “Receive reports by Email,” click on “National” or “State” to select the reports you would like to receive.
- Follow us on Twitter @usda\_nass

For more information on NASS surveys and reports, call the Heartland Regional Field Office at (314) 595-9594 or e-mail: [nassrfohr@usda.gov](mailto:nassrfohr@usda.gov).