

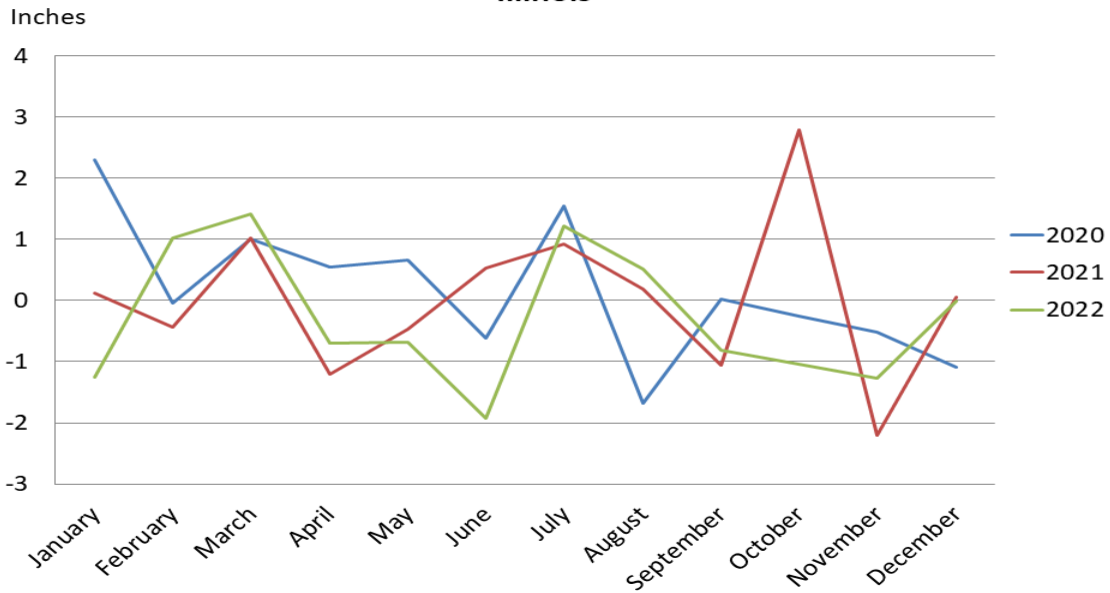


Illinois Crop Progress and Condition

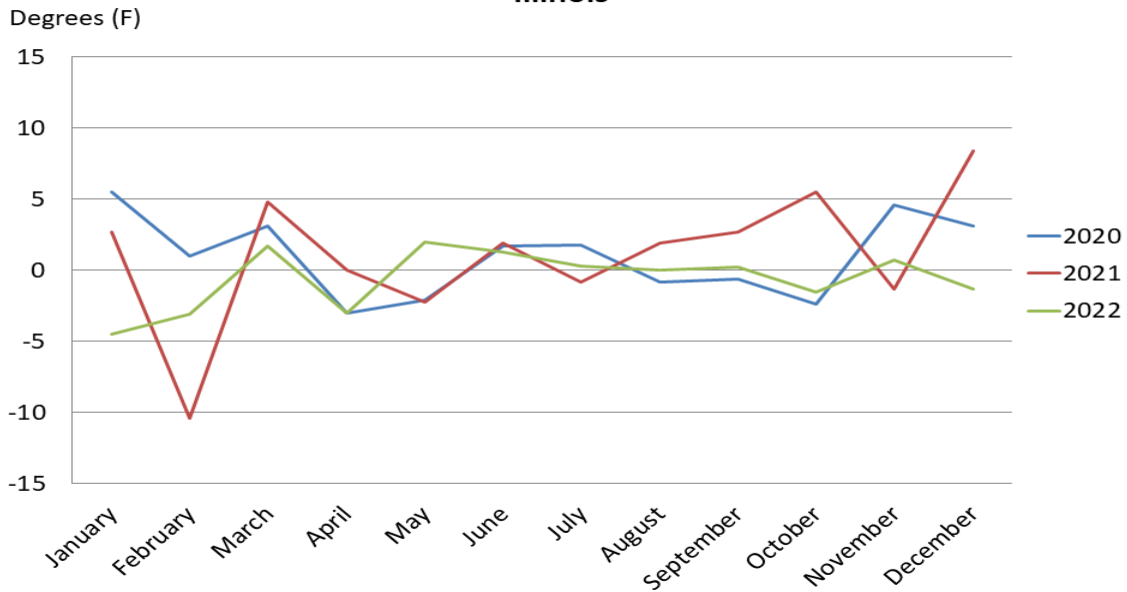
Released January 20, 2023

Annual Weather Summary – Illinois 2022

Precipitation Departure from Normal Illinois



Temperature Departure from Normal Illinois



Precipitation by District – Illinois: Average (1981-2010), 2021, and 2022

District and State	Jan	Feb	Mar	Apr	May	Jun	Jul	Aug	Sep	Oct	Nov	Dec	Annual
	(inches)	(inches)	(inches)	(inches)	(inches)	(inches)	(inches)	(inches)	(inches)	(inches)	(inches)	(inches)	(inches)
Northwest													
Average	1.61	1.73	2.41	3.73	4.61	5.09	4.12	3.92	3.64	2.93	2.41	1.97	38.16
2021	1.79	1.02	2.11	2.97	4.29	3.95	3.50	2.63	1.10	5.82	0.41	1.71	31.30
2022	0.59	1.18	3.40	4.11	3.44	3.55	4.91	5.57	3.49	1.50	1.85	2.51	36.10
Northeast													
Average	1.91	1.77	2.30	3.73	4.56	4.57	3.92	3.90	3.39	3.21	2.51	2.05	37.82
2021	1.88	1.04	1.45	1.52	3.09	5.43	2.40	3.41	1.23	6.60	0.63	2.38	30.99
2022	0.55	2.03	3.31	3.76	4.46	2.47	5.30	4.13	2.66	2.03	1.12	2.34	34.16
West													
Average	1.76	1.87	2.49	3.93	5.02	4.77	4.01	3.72	3.60	3.10	2.57	2.00	38.84
2021	2.03	1.11	3.87	4.60	5.99	5.97	5.17	3.01	1.91	6.88	0.45	1.06	42.05
2022	0.78	2.10	3.81	3.42	4.14	3.61	3.61	1.82	3.85	2.29	1.63	1.78	32.84
Central													
Average	2.06	1.88	2.57	3.88	4.63	4.32	4.04	3.55	3.29	3.20	2.77	2.16	38.35
2021	2.53	1.57	3.72	3.16	5.33	5.96	4.35	3.96	2.02	7.46	0.67	1.93	42.66
2022	0.59	2.76	4.11	2.83	3.64	2.89	3.29	4.16	2.53	2.67	1.97	2.45	33.89
East													
Average	2.22	1.90	2.57	3.86	4.49	4.65	4.27	3.58	3.19	3.25	2.90	2.22	39.10
2021	2.10	1.42	3.24	2.43	4.44	7.04	3.81	4.48	2.79	8.10	1.02	2.36	43.23
2022	0.51	2.91	4.19	2.63	3.82	1.84	4.24	4.52	1.88	2.73	1.89	2.18	33.34
West Southwest													
Average	2.30	2.05	2.95	4.37	4.80	4.50	3.91	3.44	3.24	3.20	3.12	2.31	40.17
2021	2.71	1.51	4.78	3.49	4.58	6.05	6.37	4.00	2.64	5.15	0.61	2.29	44.18
2022	0.86	2.80	5.06	3.61	4.65	3.24	6.88	3.24	2.70	3.04	2.16	1.92	40.16
East Southeast													
Average	2.84	2.31	3.30	4.71	4.79	4.86	4.19	3.27	3.18	3.55	3.69	2.76	43.44
2021	2.86	2.60	4.92	2.58	4.22	5.20	6.65	4.76	3.22	5.47	1.46	3.34	47.28
2022	1.26	4.53	5.45	3.24	4.28	2.29	7.50	5.82	2.30	1.98	1.65	2.53	42.83
Southwest													
Average	3.00	2.74	3.96	5.05	5.11	4.41	3.98	3.23	3.27	3.39	3.95	3.15	45.22
2021	3.35	1.91	6.11	3.65	3.20	2.84	5.69	3.52	3.31	4.76	1.30	3.49	43.13
2022	2.28	5.32	5.00	4.35	4.89	1.75	4.89	3.16	1.62	2.05	2.20	3.12	40.63
Southeast													
Average	3.38	3.03	4.32	5.12	5.04	4.58	4.11	3.32	3.38	3.55	4.08	3.54	47.45
2021	3.30	3.06	6.31	3.23	3.39	3.70	7.04	3.85	2.78	4.15	1.47	4.20	46.48
2022	2.55	5.35	4.86	4.13	3.37	2.45	5.97	3.39	1.35	1.59	1.86	3.18	40.05
Illinois													
Average	2.31	2.11	2.94	4.24	4.77	4.65	4.06	3.56	3.35	3.26	3.08	2.43	40.75
2021	2.47	1.67	3.97	3.03	4.30	5.18	4.98	3.75	2.30	6.05	0.87	2.49	41.06
2022	1.05	3.13	4.36	3.55	4.09	2.72	5.28	4.07	2.54	2.22	1.81	2.42	37.24

Weather data provided by the Midwestern Regional Climate Center: <http://mrcc.isws.illinois.edu>

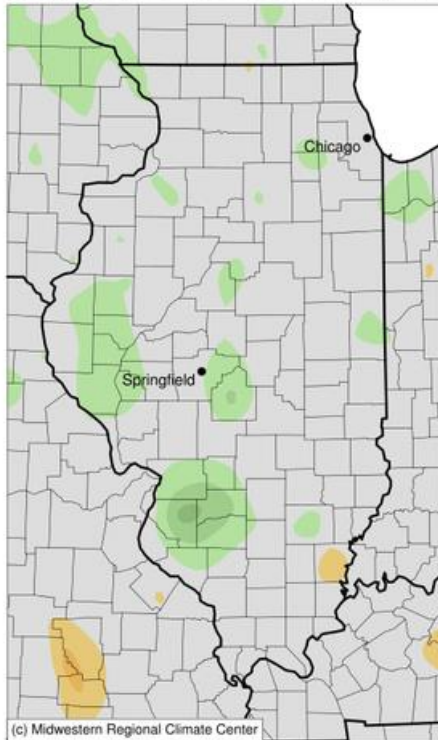
Temperature by District – Illinois: Average (1981-2010), 2021, and 2022

District and State	Jan	Feb	Mar	Apr	May	Jun	Jul	Aug	Sep	Oct	Nov	Dec	Annual
	(F)	(F)	(F)	(F)	(F)	(F)	(F)	(F)	(F)	(F)	(F)	(F)	(F)
Northwest													
Average	21.6	26.0	37.6	49.3	60.7	70.1	73.4	71.3	64.3	52.0	38.8	27.2	49.4
2021	24.4	14.1	42.0	50.4	59.5	73.3	73.1	73.8	68.0	58.0	38.9	34.4	50.8
2022	15.6	23.6	38.8	45.4	63.4	71.2	73.3	71.4	64.9	50.9	40.3	25.3	48.7
Northeast													
Average	22.9	26.9	37.5	48.9	60.0	69.6	73.5	71.6	64.7	52.4	39.5	28.3	49.7
2021	26.5	16.7	42.4	50.6	58.9	72.6	73.1	74.7	68.4	58.5	38.5	35.4	51.4
2022	17.8	24.6	39.1	45.5	62.6	70.8	73.3	71.6	65.3	51.5	41.4	26.7	49.2
West													
Average	24.9	29.6	40.6	52.0	62.9	72.1	75.3	73.4	66.3	54.1	41.3	30.2	51.9
2021	27.8	18.3	45.6	51.7	60.6	73.8	74.6	75.0	69.8	59.0	41.2	38.3	53.0
2022	19.3	25.8	41.8	48.1	64.8	73.3	75.0	73.8	66.9	52.4	41.9	28.2	50.9
Central													
Average	25.2	29.7	40.5	52.0	63.0	71.9	74.9	72.9	66.3	54.2	41.3	30.4	51.9
2021	28.1	19.5	45.2	52.2	60.9	74.2	74.3	75.2	69.8	59.8	40.4	39.0	53.2
2022	20.8	26.2	42.4	49.0	65.3	73.4	74.7	73.2	66.7	52.8	42.7	29.6	51.4
East													
Average	25.2	29.5	40.0	51.3	62.4	71.5	74.2	72.3	66.1	54.1	41.1	30.4	51.5
2021	28.5	19.2	44.5	51.6	60.1	73.2	73.2	74.6	69.2	59.5	39.1	38.4	52.6
2022	21.0	25.8	41.8	48.2	64.6	72.8	74.0	72.2	66.1	52.7	42.2	29.3	50.9
West Southwest													
Average	28.4	33.0	43.0	54.1	64.4	73.3	76.4	74.7	67.7	56.0	43.5	33.1	54.0
2021	30.8	22.2	47.8	53.3	61.9	74.8	75.2	75.9	70.2	60.8	42.1	41.8	54.7
2022	24.0	29.1	45.0	51.4	65.8	74.7	76.9	74.8	67.4	53.6	43.5	31.7	53.2
East Southeast													
Average	28.9	33.2	43.1	54.1	64.5	73.2	76.2	74.5	67.8	56.1	43.6	33.5	54.1
2021	31.4	24.3	48.0	53.5	61.8	74.4	75.2	76.0	69.9	61.7	41.5	42.6	55.0
2022	25.4	30.1	45.2	51.6	66.4	74.3	76.8	74.2	67.6	54.5	44.2	32.6	53.6
Southwest													
Average	32.4	36.9	46.1	56.6	66.2	74.8	78.1	76.4	69.2	57.9	45.7	36.3	56.4
2021	34.5	26.4	50.8	55.4	63.7	76.0	77.0	77.3	70.6	62.6	44.1	46.3	57.1
2022	28.9	33.7	47.8	54.6	67.8	76.1	79.5	76.3	69.4	56.2	45.5	35.6	56.0
Southeast													
Average	32.6	36.9	46.0	56.5	66.0	74.5	77.7	76.1	69.3	57.8	45.8	36.4	56.3
2021	34.8	28.1	50.9	55.2	63.2	75.3	76.8	77.3	70.5	63.2	43.3	45.9	57.0
2022	29.6	34.7	47.8	54.6	68.2	75.7	79.0	76.0	69.3	56.3	45.7	35.6	56.0
Illinois													
Average	26.7	31.1	41.4	52.6	63.3	72.2	75.4	73.6	66.8	54.9	42.2	31.6	52.7
2021	29.4	20.7	46.2	52.6	61.1	74.1	74.6	75.5	69.5	60.3	40.9	40.0	53.7
2022	22.2	28.0	43.1	49.6	65.3	73.5	75.7	73.6	67.0	53.3	42.9	30.3	52.2

Weather data provided by the Midwestern Regional Climate Center: <http://mrcc.isws.illinois.edu>

Average Temperature (°F): Departure from 1991-2020 Normals

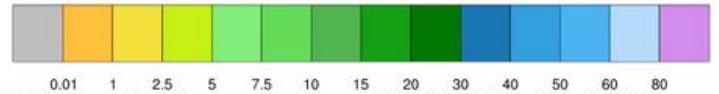
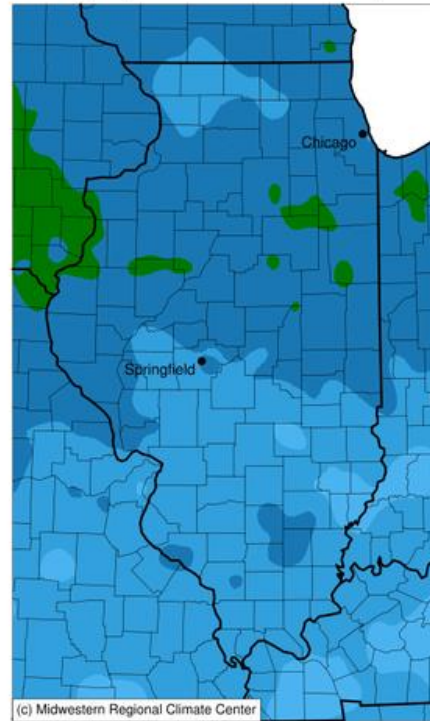
January 01, 2022 to December 31, 2022



Stations from the following networks used: WBAN, COOP, FAA, GHCN, ThreadEx, CoCoRaHS, WMO, ICAO, NWSLI, Missouri FSA, Missouri Mesonet, Midwestern Regional Climate Center
cli-MATE: MRCC Application Tools Environment
Generated at: 1/20/2023 1:16:31 PM CST

Accumulated Precipitation (in)

January 01, 2022 to December 31, 2022



Stations from the following networks used: WBAN, COOP, FAA, GHCN, ThreadEx, CoCoRaHS, WMO, ICAO, NWSLI, Missouri FSA, Missouri Mesonet, Midwestern Regional Climate Center
cli-MATE: MRCC Application Tools Environment
Generated at: 1/20/2023 1:37:07 PM CST

Access to NASS Reports

For your convenience, you may access NASS reports and products the following ways:

- All reports are available electronically, at no cost, on the NASS web site: <http://www.nass.usda.gov>
- Both national and state specific reports are available via a free e-mail subscription. To set-up this free subscription, visit <http://www.nass.usda.gov> and in the “Follow NASS” box under “Receive reports by Email,” click on “National” or “State” to select the reports you would like to receive.
- Follow us on Twitter @usda_nass

For more information on NASS surveys and reports, call the Heartland Regional Field Office at (314) 595-9594 or e-mail: nassrfohr@usda.gov.