



Illinois Crop Progress and Condition

Released September 9, 2024

There were 6.7 days suitable for fieldwork in the week ending September 8, 2024. Statewide, the average temperature was 65.0 degrees, 5.5 degrees below normal. Precipitation averaged 0.04 inches, 0.59 inches below normal. Topsoil moisture supply was rated 13 percent very short, 29 percent short, 57 percent adequate, and 1 percent surplus. Subsoil moisture supply was rated 11 percent very short, 26 percent short, 62 percent adequate, and 1 percent surplus. Corn dented reached 82 percent, compared to the 5-year average of 75 percent. Corn mature reached 40 percent, compared to the 5-year average of 24 percent. Corn harvested for grain reached 2 percent, compared to the 5-year average of 1 percent. Corn condition was rated 2 percent very poor, 4 percent poor, 19 percent fair, 58 percent good, and 17 percent excellent. Soybeans dropping leaves reached 35 percent, compared to the 5-year average of 11. Soybeans harvested reached 1 percent. Soybeans condition was rated 2 percent very poor, 5 percent poor, 23 percent fair, 56 percent good, and 14 percent excellent.

Days Suitable for Fieldwork and Soil Moisture Supply: Week Ending September 8, 2024

State	Days Suitable for Fieldwork	Topsoil Moisture Supply				Subsoil Moisture Supply			
		Very Short	Short	Adequate	Surplus	Very Short	Short	Adequate	Surplus
		(percent)	(percent)	(percent)	(percent)	(percent)	(percent)	(percent)	(percent)
Illinois	6.7	13	29	57	1	11	26	62	1

Crop Progress – Illinois

Item	Week ending			2019-2023 Average
	September 8, 2024	September 1, 2024	September 8, 2023	
	(percent)	(percent)	(percent)	(percent)
Corn dented	82	70	81	75
Corn mature	40	24	34	24
Corn harvested	2	-	2	1
Soybeans dropping leaves	35	14	21	11
Soybeans harvested	1	-	-	-
Alfalfa hay 3rd cutting	89	84	84	87

- Represents zero.

Corn Condition – Illinois

Date	Very Poor	Poor	Fair	Good	Excellent
	(percent)	(percent)	(percent)	(percent)	(percent)
September 8, 2024	2	4	19	58	17
September 1, 2024	3	5	21	54	17
September 8, 2023	6	10	26	48	10

Soybeans Condition – Illinois

Date	Very Poor	Poor	Fair	Good	Excellent
	(percent)	(percent)	(percent)	(percent)	(percent)
September 8, 2024	2	5	23	56	14
September 1, 2024	3	7	22	56	12
September 8, 2023	6	11	25	44	14

Pasture Condition – Illinois

Date	Very Poor	Poor	Fair	Good	Excellent
	(percent)	(percent)	(percent)	(percent)	(percent)
September 8, 2024	4	18	37	39	2
September 1, 2024	3	8	37	47	5
September 8, 2023	16	23	37	21	3

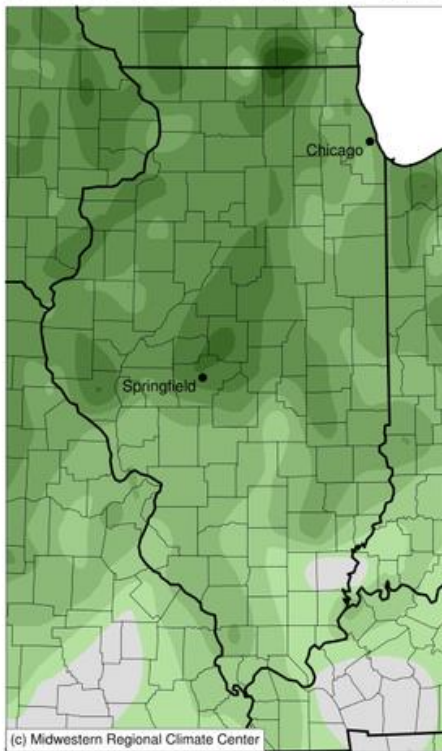
Weather Information: Week Ending September 8, 2024

District and State	Temperature		Precipitation		Growing Degree Days	
	Average	Departure from Normal	Total	Departure from Normal	Since May 1	Departure from Normal
	(degrees - F)	(degrees - F)	(inches)	(inches)		
Northwest	62.0	-6.0	0.02	-0.60	2,579	81
Northeast	63.0	-5.4	0.02	-0.57	2,574	102
West	64.0	-6.7	0.04	-0.68	2,773	40
Central	63.1	-6.9	0.07	-0.65	2,712	45
East	63.8	-5.8	0.08	-0.64	2,696	73
West Southwest	65.9	-5.7	0.06	-0.56	2,918	83
East Southeast	66.6	-5.2	0	-0.59	2,922	62
Southwest	68.6	-4.3	0.02	-0.51	3,109	135
Southeast	70.1	-3.1	0.02	-0.48	3,163	146
Illinois	65.0	-5.5	0.04	-0.59	2,814	83

Weather data provided by the Midwestern Regional Climate Center: <https://mrcc.purdue.edu/>

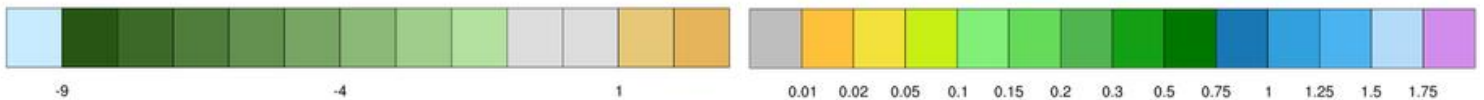
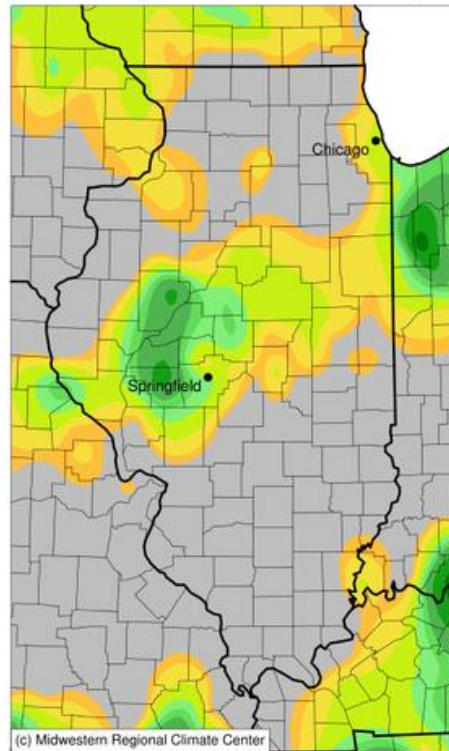
Average Temperature (°F): Departure from 1991-2020 Normals

September 02, 2024 to September 08, 2024

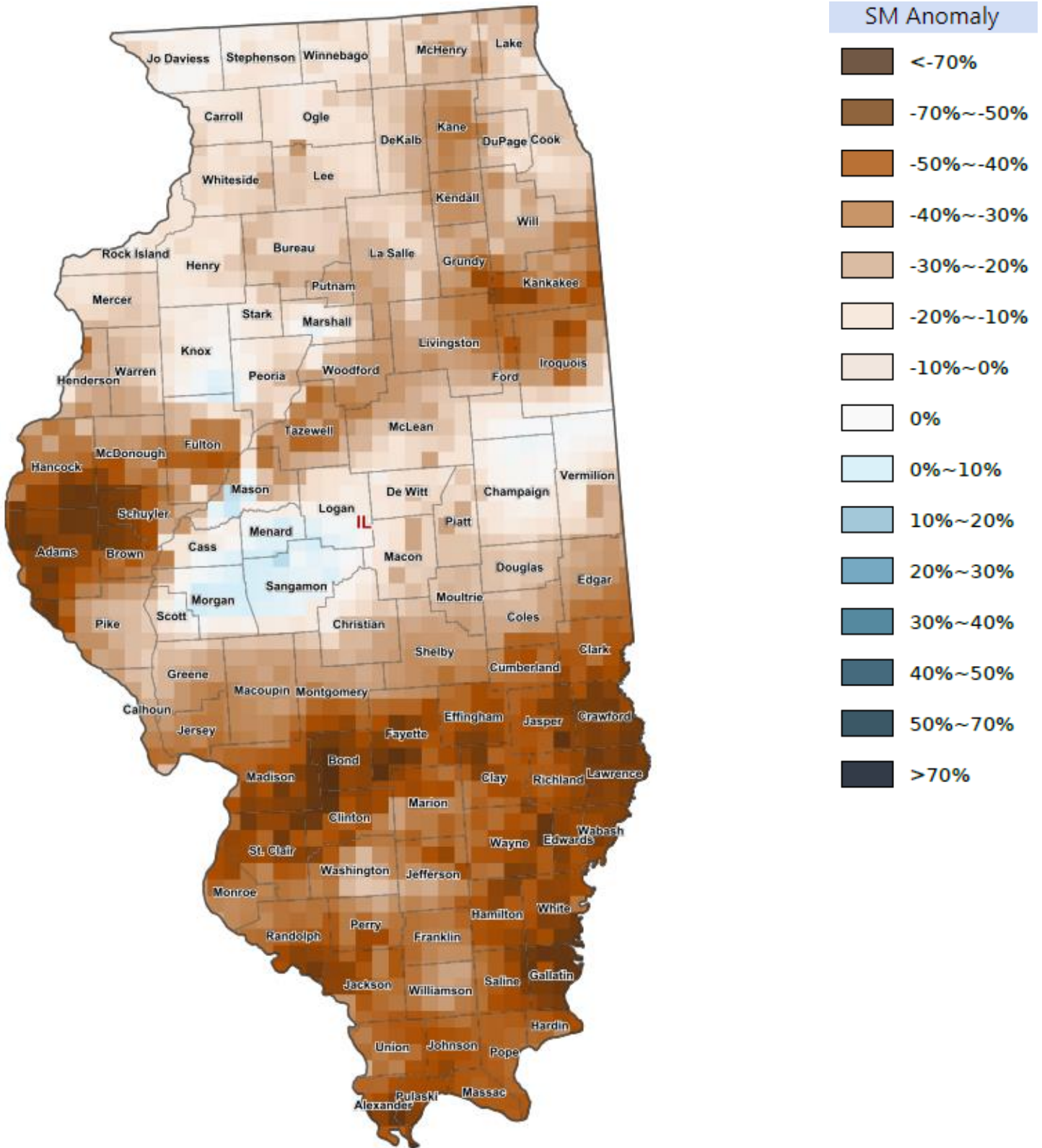


Accumulated Precipitation (in)

September 02, 2024 to September 08, 2024



Soil Moisture Deviation from Historical Average – September 6, 2024



<https://cloud.csiss.gmu.edu/Crop-CASMA/>
(historical average includes 2015 to current)

Access to NASS Reports

For your convenience, you may access NASS reports and products the following ways:

- All reports are available electronically, at no cost, on the NASS web site: <http://www.nass.usda.gov>
- Both national and state specific reports are available via a free e-mail subscription. To set-up this free subscription, visit <http://www.nass.usda.gov> and in the “Follow NASS” box under “Receive reports by Email,” click on “National” or “State” to select the reports you would like to receive.
- Follow us on X @usda_nass

For more information on NASS surveys and reports, call the Heartland Regional Field Office at (314) 595-9594 or e-mail: nassrfohlr@usda.gov.