



Illinois Crop Progress and Condition

Released September 16, 2024

There were 6.8 days suitable for fieldwork in the week ending September 15, 2024. Statewide, the average temperature was 69.1 degrees, 0.8 degrees above normal. Precipitation averaged 0.25 inches, 0.54 inches below normal. Topsoil moisture supply was rated 22 percent very short, 36 percent short, and 42 percent adequate. Subsoil moisture supply was rated 19 percent very short, 34 percent short, and 47 percent adequate. Corn dented reached 93 percent, compared to the 5-year average of 84 percent. Corn mature reached 63 percent, compared to the 5-year average of 40 percent. Corn harvested reached 7 percent, compared to the 5-year average of 3 percent. Corn condition was rated 1 percent very poor, 4 percent poor, 18 percent fair, 56 percent good, and 21 percent excellent. Soybeans dropping leaves reached 62 percent, compared to the 5-year average of 31. Soybeans harvested reached 6 percent, compared to the 5-year average of 1 percent. Soybeans condition was rated 2 percent very poor, 5 percent poor, 21 percent fair, 54 percent good, and 18 percent excellent.

Days Suitable for Fieldwork and Soil Moisture Supply: Week Ending September 15, 2024

State	Days Suitable for Fieldwork	Topsoil Moisture Supply				Subsoil Moisture Supply			
		Very Short	Short	Adequate	Surplus	Very Short	Short	Adequate	Surplus
Illinois	6.8	(percent)	(percent)	(percent)	(percent)	(percent)	(percent)	(percent)	(percent)
		22	36	42	-	19	34	47	-

- Represents zero.

Crop Progress – Illinois

Item	Week ending			2019-2023 Average
	September 15, 2024	September 8, 2024	September 15, 2023	
	(percent)	(percent)	(percent)	(percent)
Corn dented	93	82	92	84
Corn mature	63	40	62	40
Corn harvested	7	2	5	3
Soybeans dropping leaves	62	35	55	31
Soybeans harvested	6	1	1	1
Alfalfa hay 3rd cutting	94	89	91	90

Corn Condition – Illinois

Date	Very Poor	Poor	Fair	Good	Excellent
	(percent)	(percent)	(percent)	(percent)	(percent)
September 15, 2024	1	4	18	56	21
September 8, 2024	2	4	19	58	17
September 15, 2023	9	13	23	50	5

Soybeans Condition – Illinois

Date	Very Poor	Poor	Fair	Good	Excellent
	(percent)	(percent)	(percent)	(percent)	(percent)
September 15, 2024	2	5	21	54	18
September 8, 2024	2	5	23	56	14
September 15, 2023	8	13	25	47	7

Pasture Condition – Illinois

Date	Very Poor	Poor	Fair	Good	Excellent
	(percent)	(percent)	(percent)	(percent)	(percent)
September 15, 2024	11	27	36	25	1
September 8, 2024	4	18	37	39	2
September 15, 2023	15	26	36	22	1

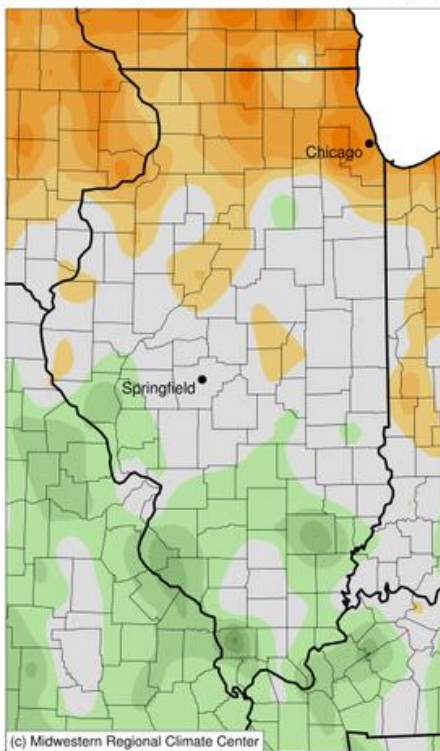
Weather Information: Week Ending September 15, 2024

District and State	Temperature		Precipitation		Growing Degree Days	
	Average	Departure from Normal	Total	Departure from Normal	Since May 1	Departure from Normal
	(degrees - F)	(degrees - F)	(inches)	(inches)		
Northwest	69.1	3.4	0.01	-0.79	2,714	105
Northeast	69.8	3.7	0	-0.82	2,715	129
West	69.2	1.0	0.04	-0.83	2,910	54
Central	68.7	0.6	0.01	-0.72	2,848	57
East	69.0	1.3	0.01	-0.70	2,830	85
West Southwest	69.3	0	0.10	-0.66	3,054	89
East Southeast	69.5	-0.1	0.30	-0.50	3,057	63
Southwest	68.0	-2.6	1.03	0.21	3,233	120
Southeast	69.2	-1.8	1.10	0.29	3,281	122
Illinois	69.1	0.8	0.25	-0.54	2,948	91

Weather data provided by the Midwestern Regional Climate Center: <https://mrcc.purdue.edu/>

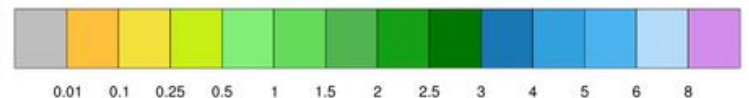
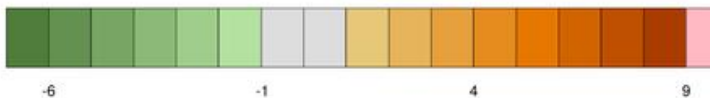
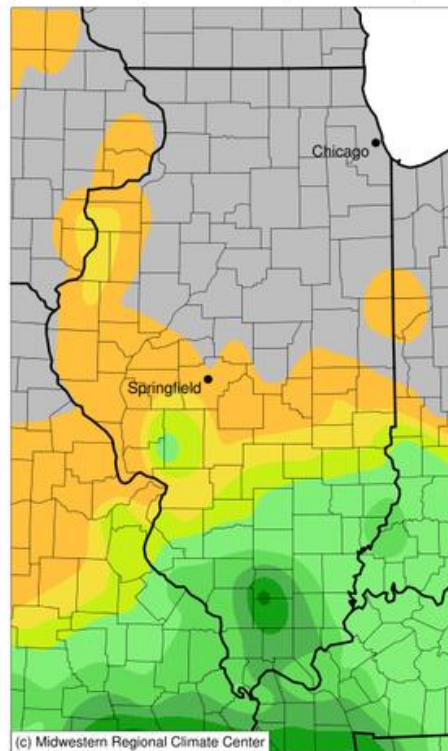
Average Temperature (°F): Departure from 1991-2020 Normals

September 09, 2024 to September 15, 2024

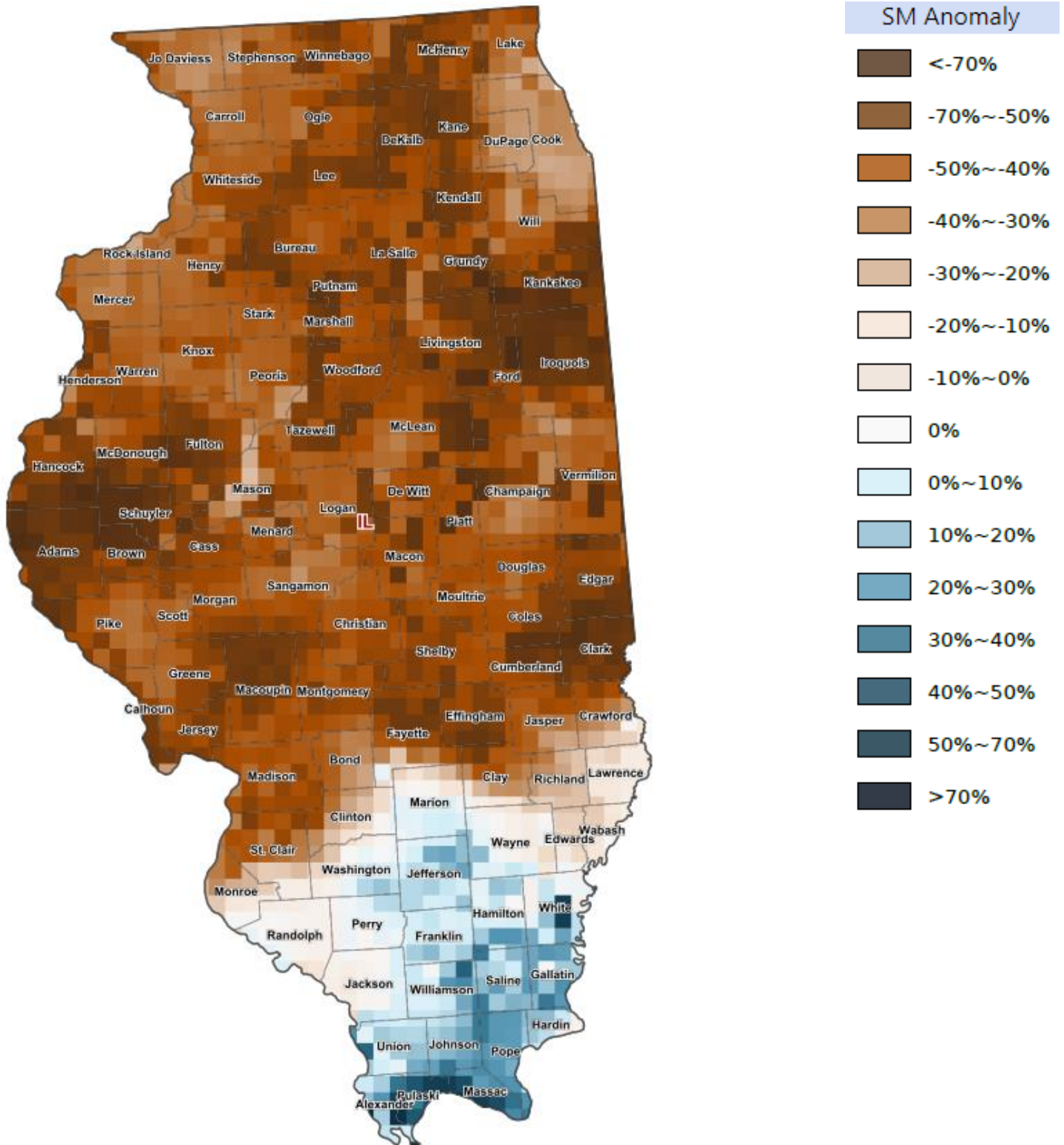


Accumulated Precipitation (in)

September 09, 2024 to September 15, 2024



Soil Moisture Deviation from Historical Average – September 13, 2024



<https://cloud.csiss.gmu.edu/Crop-CASMA/>
(historical average includes 2015 to current)

Access to NASS Reports

For your convenience, you may access NASS reports and products the following ways:

- All reports are available electronically, at no cost, on the NASS web site: <http://www.nass.usda.gov>
- Both national and state specific reports are available via a free e-mail subscription. To set-up this free subscription, visit <http://www.nass.usda.gov> and in the “Follow NASS” box under “Receive reports by Email,” click on “National” or “State” to select the reports you would like to receive.
- Follow us on X @usda_nass

For more information on NASS surveys and reports, call the Heartland Regional Field Office at (314) 595-9594 or e-mail: nassrfohlr@usda.gov.