



CROP WEATHER

Kansas Agricultural Statistics

Cooperating with the Kansas Department of Agriculture

PO Box 3534 • Topeka KS 66601-3534 • (785)233-2230 • www.nass.usda.gov/ks • nass-ks@nass.usda.gov

Released: December 14, 2009

Volume 09 No. 50

Agricultural Summary: The weather turned cold early last week with sub-zero lows in many areas by mid-week, warming up to highs in the 40's and 50's by the weekend. There was snow and rain across most of Kansas, with some areas receiving more than a foot of snow. The wet weather and cold temperatures limited farmers to an average of 2.3 days suitable for fieldwork across the State. Topsoil moisture supplies were rated as 1 percent very short, 3 percent short, 79 percent adequate, and 17 percent surplus. Subsoil moisture supplies were rated as 1 percent very short, 5 percent short, 86 percent adequate, and 8 percent surplus.

Field Crop Report: Row crop harvest is nearly complete with only the late season crops of cotton and sunflowers being less than 95 percent complete. Only four percent of the State's **corn** crop is left to be harvested, whereas corn harvest would normally be complete by now. Three percent of the **soybeans** and 5 percent of the **sorghum** have yet to be harvested as of Sunday. Fifty-nine percent of the **cotton** has been harvested, which is behind a normal crop year, while 88 percent of the **sunflowers** have been harvested. Ninety-six percent of the **winter wheat** has emerged, behind the normal 100 percent. The condition of the wheat crop was rated 1 percent very poor, 3 percent poor, 25 percent fair, 62 percent good, and 9 percent excellent.

Feed Supplies Report: Range and pasture condition was rated as 3 percent very poor, 10 percent poor, 32 percent fair, 48 percent good, and 7 percent excellent. Feed grain supplies were rated as 2 percent short, 86 percent adequate, and 12 percent surplus. Hay and forage supplies were rated as 3 percent short, 84 percent adequate, and 13 percent surplus. Stock water supplies were rated as 2 percent very short, 3 percent short, 91 percent adequate, and 4 percent surplus.

Crop Conditions for the Week Ending 12/13/09

	Very Poor	Poor	Fair	Good	Excellent
Winter Wheat	1	3	25	62	9
Range & Pasture	3	10	32	48	7

Crop Progress by Agricultural Statistics District as of 12/13/09

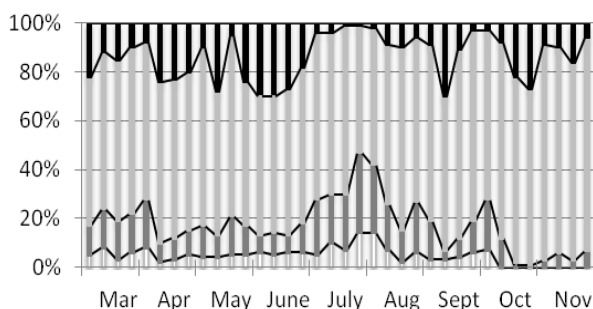
	NW	WC	SW	NC	C	SC	NE	EC	SE	STATE	LAST WEEK	LAST YEAR	5-YR AVG.
Corn Harvested	89	98	100	97	100	98	99	92	99	96	94	100	100
Sorghum Harvested	82	99	98	96	98	92	97	88	94	95	90	100	100
Soybeans Harvested	100	100	100	100	100	100	100	95	94	97	96	100	100
Winter Wheat Emerged	98	100	97	99	97	98	100	96	82	96	94	100	100

Days Suitable and Moisture Conditions for the Week Ending 12/13/09

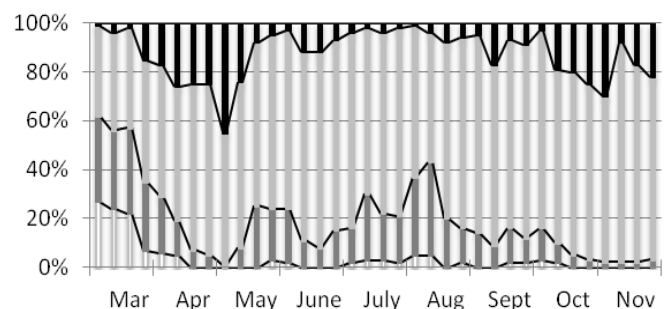
	NW	WC	SW	NC	C	SC	NE	EC	SE	STATE	LAST WEEK	LAST YEAR
Days Suitable												
For Fieldwork	2.2	1.0	4.3	0.6	1.2	1.9	1.3	2.9	4.4	2.3	6.0	NA
Topsoil Moisture (Percent)												
Very Short	0	0	6	0	0	1	0	0	0	1	0	NA
Short	0	0	27	0	1	4	0	0	0	3	4	NA
Adequate	90	98	65	57	79	92	69	88	87	79	84	NA
Surplus	10	2	2	43	20	3	31	12	13	17	12	NA
Subsoil Moisture (Percent)												
Very Short	0	0	14	0	0	0	0	0	0	1	1	NA
Short	5	0	29	0	13	1	0	0	0	5	6	NA
Adequate	93	100	56	72	81	99	92	91	92	86	87	NA
Surplus	2	0	1	28	6	0	8	9	8	8	6	NA

Growing Season Moisture Supplies

2008 Topsoil Moisture



2009 Topsoil Moisture



□ Very Short ■ Short ■ Adequate ■ Surplus

□ Very Short ■ Short ■ Adequate ■ Surplus

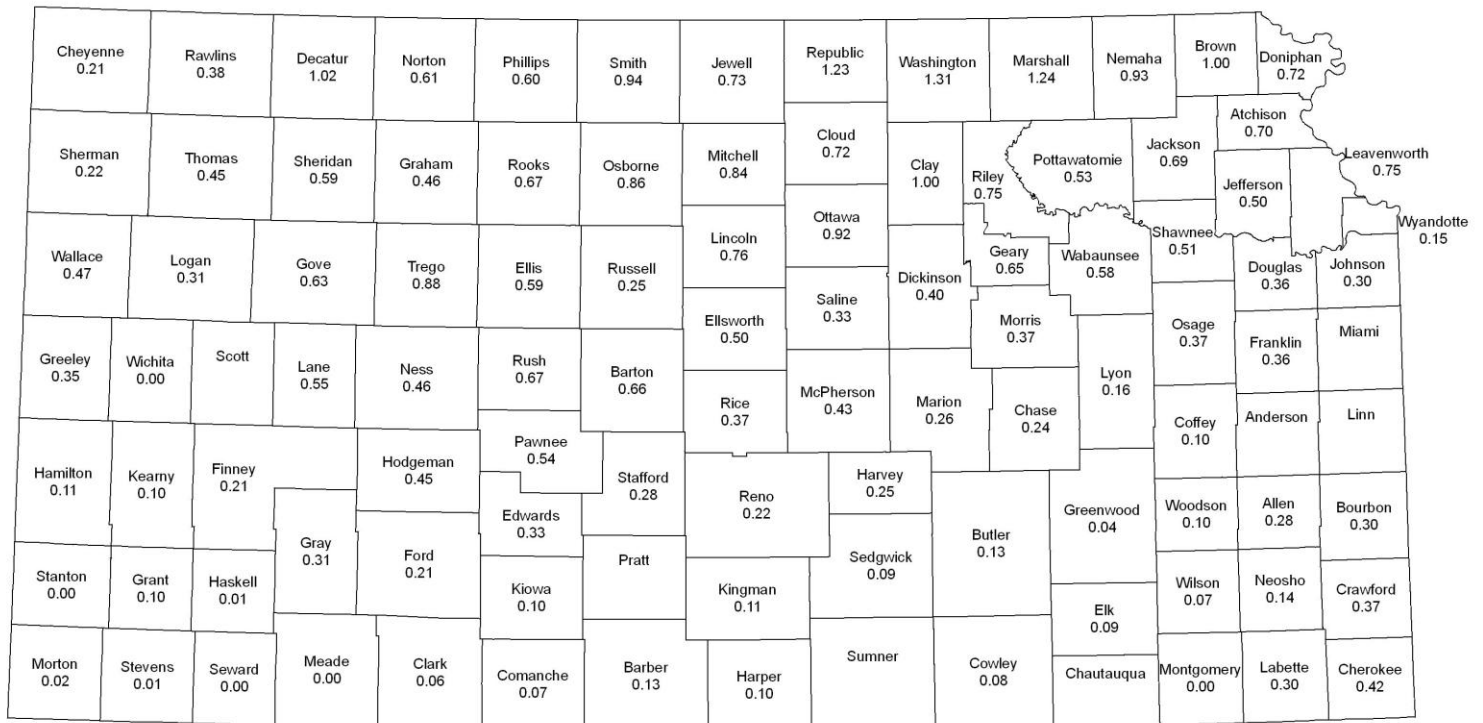
This is a cooperative effort with Kansas State Research & Extension Service, KSU Weather Data Library, and Kansas Agriculture Statistics

Temp. and Precip. Data, Selected Sites, for the Week Ending 12/13/09

Station		Temperature					Precip	Station		Temperature					Precip
Dist	City	Max	Min	Avg	Max	Min		Dist	City	Max	Min	Avg	Max	Min	
NW	Colby	39	-5	12	30	22	.08	SC	Hesston	51	0	24	43	37	.16
WC	Tribune	58	-11	15	32	31	.00	NE	Powhatt	39	-5	22	35	29	.53
SW	Garden Cty	61	-11	18	32	31	.06	NE	Manhat	38	-13	16	36	33	.40
NC	Scandia	32	-16	10	33	31	NA	EC	Ottawa	44	4	27	33	28	.23
C	Hays	32	-6	14	35	31	.00	EC	Slvr Lk	42	-8	22	36	32	.35
SC	Hutch	49	-6	21	43	37	.00	EC	Rossvl	39	-8	20	36	34	.39
SC	St John	42	-6	16	43	34	.11	SE	Parsons	46	7	29	39	33	.05

Data collected by Automated Stations (above) may differ from official stations (below). Automated stations report through midnight on Sunday. Official reporting stations data are through 7:00 a.m. Sunday. The map data are collected by individuals (one or more per county).

Precipitation for the Week Ending December 13, 2009 at 7:00 a.m.



Omission of an entry indicates report not received.