



CROP PROGRESS & CONDITION

Kansas Agricultural Statistics

Cooperating with the Kansas Department of Agriculture

PO Box 3534 • Topeka KS 66601-3534 • (785) 233-2230 • www.nass.usda.gov/ks • nass-ks@nass.usda.gov

Released: April 23, 2012

Volume 12 No. 17

For the week ending April 22, 2012

Agricultural Summary: Temperatures continued to be mostly above normal across Kansas last week with only light precipitation. Thirty-four of the 53 stations received no precipitation while only two stations received more than half an inch. Columbus and Pittsburg in the Southeast District received 0.58 inches and 0.51 inches, respectively. High temperatures ranged from the mid 70's to mid 80's, and low temperatures ranged from the low 30's to low 40's. Eight stations reported low temperatures at or below freezing, and six stations reported average temperatures below normal. Last week, producers averaged 5.6 days suitable for fieldwork as all districts reported over 4.5 days suitable. Because of limited rainfall last week, topsoil moisture conditions slightly declined to 4 percent very short, 13 percent short, 77 percent adequate, and 6 percent surplus. Subsoil moisture supplies also slightly declined to 5 percent very short, 19 percent short, 73 percent adequate, and 3 percent surplus. Producers continue to spray wheat for insects and disease, plant corn, and cut alfalfa, while a few producers have begun to plant soybeans, sorghum, and cotton.

Field Crop Report: The Kansas wheat crop continues to progress three weeks ahead of the average. Nearly all the crop has jointed, as the statewide average is 97 percent, ahead of 59 percent last year and the 5-year average of 62 percent. Forty-five percent of the wheat crop has already headed, well ahead of 5 percent last year and the 5-year average of 2 percent. The Northwest and West Central districts are below 10 percent headed while the South Central and Southeast districts are more than 80 percent headed. The condition of the wheat crop decreased slightly to 2 percent very poor, 5 percent poor, 25 percent fair, 51 percent

good, and 17 percent excellent. Insect damage to the wheat continues to increase to 19 percent light, 5 percent moderate, and 1 percent severe, while disease damage also increased to 26 percent light, 11 percent moderate, and 2 percent severe. **Corn** planting reached 32 percent complete, ahead of the previous year at 26 percent and a week ahead of the 5-year average of 19 percent. Eleven percent of the crop has already emerged, ahead of the previous year at 4 percent and the 5-year average of 2 percent. While the western districts are still below 10 percent planted, the Southeast district already has 54 percent of the crop emerged. **Soybean** growers have just started planting their crop, primarily in Eastern Kansas and are 2 percent complete. The first cutting of **alfalfa** was 14 percent complete last week, ahead of the previous year and 5-year average.

Feed Supplies Report: The condition of the Kansas range and pasture was rated at 11 percent very poor, 12 percent poor, 33 percent fair, 39 percent good, and 5 percent excellent. Feed grain supplies declined slightly to 6 percent very short, 16 percent short, 76 percent adequate, and 2 percent surplus. Hay and forage supplies slightly improved to 14 percent very short, 20 percent short, 64 percent adequate, and 2 percent surplus. Stock water supplies increased to 5 percent very short, 10 percent short, 82 percent adequate, and 3 percent surplus. Cattle continued to be turned out to spring pasture last week, while a few producers were still repairing farm structures due to damage from the previous week's storms.

Kansas Crop Progress for the Week Ending April 22, 2012

Type	This Week	Last Week	Last Year	5-Yr Avg.
	Percent			
Winter Wheat Jointed	97	91	59	62
Winter Wheat Headed	45	19	5	2
Corn Planted	32	18	26	19
Corn Emerged	11	NA	4	2
Soybeans Planted	2	NA	0	0
Alfalfa First Cutting	14	1	0	0

Kansas Crop Conditions for the Week Ending April 22 2012

Crop	Very Poor	Poor	Fair	Good	Excellent
	Percent				
Winter Wheat	2	5	25	51	17
Range & Pasture	11	12	33	39	5

Wheat Damage for the Week Ending April 22, 2012

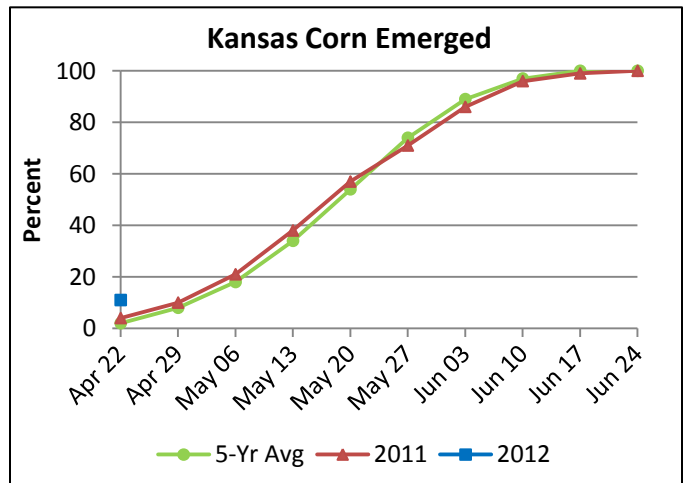
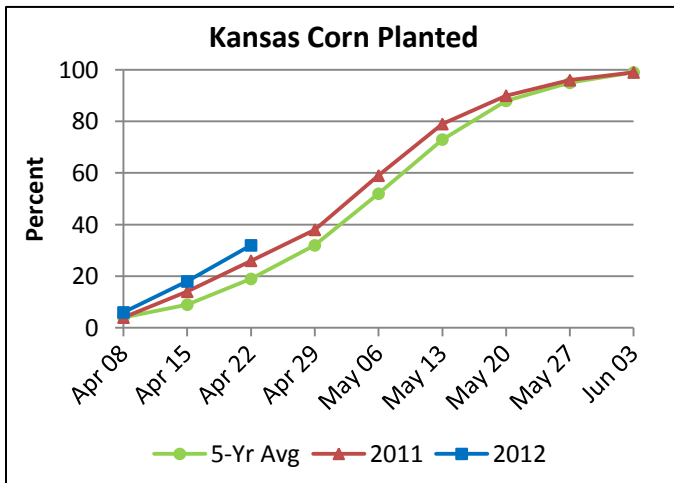
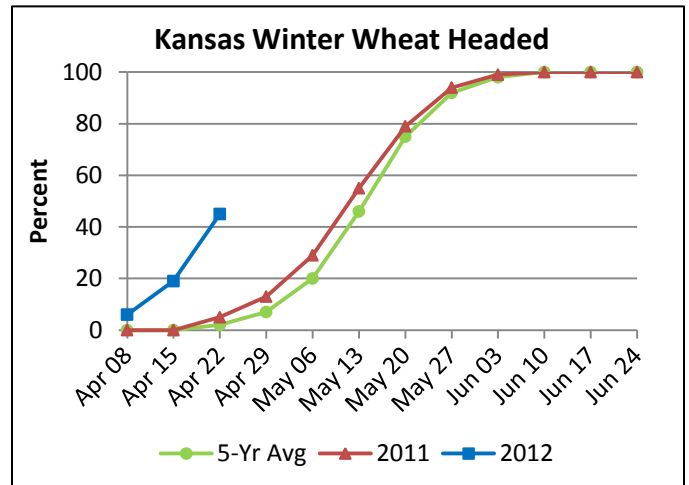
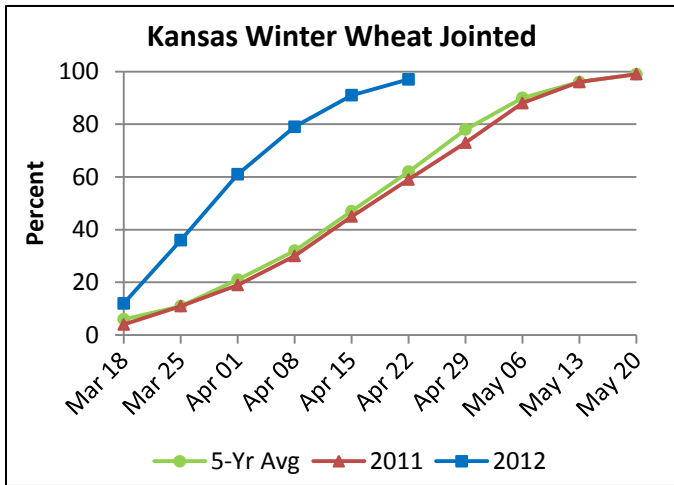
Type	None	Light	Moderate	Severe
	Percent			
Wind Damage	85	10	4	1
Insect Damage	75	19	5	1
Disease Damage	61	26	11	2

Feed and Water Supplies for the Week Ending April 22, 2012

Type	Very Short	Short	Adequate	Surplus
	Percent			
Feed Grain	6	16	76	2
Hay and Forage	14	20	64	2
Stock Water	5	10	82	3

Days Suitable, Soil Moisture, and Crop Progress by District for the Week Ending April 22, 2012

	NW	WC	SW	NC	C	SC	NE	EC	SE	STATE	LAST WEEK	LAST YEAR	
Days Suitable for Fieldwork	5.7	6.3	5.9	5.2	4.8	5.5	5.2	6.1	5.2	5.6	4.1	5.0	
Topsoil Moisture	Percent												
Very Short	5	1	22	0	1	3	0	1	0	4	2	22	
Short	12	15	24	6	13	15	5	22	2	13	8	24	
Adequate	77	83	54	84	78	70	90	75	90	77	78	48	
Surplus	6	1	0	10	8	12	5	2	8	6	12	6	
Subsoil Moisture	Percent												
Very Short	6	4	24	1	2	4	0	0	0	5	4	22	
Short	19	27	37	11	25	23	1	18	3	19	17	28	
Adequate	74	69	39	85	68	65	99	81	91	73	74	47	
Surplus	1	0	0	3	5	8	0	1	6	3	5	3	
Crop Progress	Percent												
Winter Wheat Jointed	88	94	98	99	100	99	98	98	100	97	91	59	
Winter Wheat Headed	4	5	29	41	61	81	36	65	83	45	19	5	
Corn Planted	3	4	7	27	47	42	53	66	87	32	18	26	
Corn Emerged	0	0	0	3	14	5	10	33	54	11	0	4	



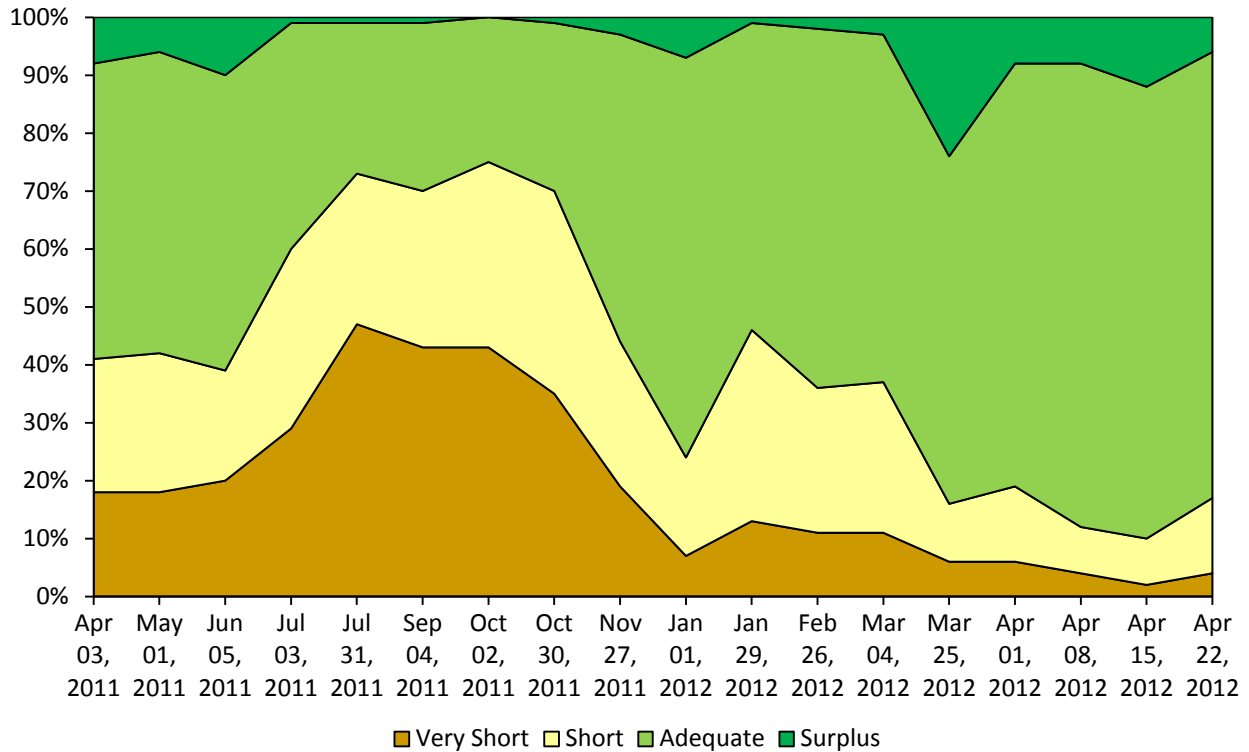
Temperature and Precipitation Data from April 15 – April 22, 2012 ^{1/}

Location	Weekly Temperatures				Precipitation (in.)				Growing Degree Days Since April 1*	
	Extremes		Avg.	DFN	Last Week		Since January 1		Total	DFN
	High	Low			Total	DFN	Total	DFN		
Northwest District										
Atwood	77	33	53	+3	0.25	-0.28	2.54	-1.95	120	+74
Colby	74	30	52	+3	0.45	-0.03	3.89	+0.50	109	+78
Goodland	74	33	51	+2	0.32	-0.05	3.00	-0.09	96	+57
Hill City	77	37	55	+3	0.02	-0.49	3.25	-1.42	143	+73
Oberlin	76	32	53	+2	0.04	-0.50	3.75	-0.58	110	+58
West Central District										
Healy	77	31	55	+3	0.10	-0.36	4.33	+0.18	135	+64
Russell Springs	76	31	53	+2	0.21	-0.15	3.39	+0.14	112	+50
Tribune	74	30	53	+3	0.00	-0.31	3.26	+0.18	104	+56
WaKeeney	76	37	55	+2	0.00	-0.53	5.13	+0.28	138	+54
Southwest District										
Ashland	84	34	58	+2	0.11	-0.34	4.10	-0.21	191	+71
Dodge City	77	36	56	+3	0.00	-0.49	5.99	+1.46	149	+58
Elkhart	80	38	57	+3	0.03	-0.37	3.03	-0.53	172	+68
Garden City	76	32	54	+1	0.00	-0.40	3.88	+0.48	123	+38
Johnson	81	35	56	0	0.06	-0.25	3.34	+1.19	140	+24
Liberal	81	37	58	+3	0.03	-0.35	4.20	+0.50	208	+91
Ulysses	77	34	54	-1	0.06	-0.31	3.81	+0.81	126	+31
North Central District										
Alton	76	35	55	+3	0.00	-0.61	5.10	-0.38	135	+57
Belleville	75	39	56	+3	0.00	-0.66	7.74	+1.83	159	+71
Beloit	75	40	57	+2	0.00	-0.58	9.01	+3.58	171	+67
Clay Center	76	40	57	-2	0.00	-0.65	8.48	+2.46	174	+37
Concordia	75	39	58	+4	0.00	-0.58	6.97	+1.47	195	+103
Smith Center	76	38	55	-1	0.02	-0.55	5.22	+0.52	145	+39
Central District										
Great Bend	79	37	57	0	0.00	-0.53	3.66	-1.68	190	+58
Hays	79	37	56	+2	0.02	-0.48	4.81	+0.06	158	+64
Herington	77	34	56	+2	0.00	-0.79	6.97	-0.62	173	+79
McPherson	78	36	57	+3	0.01	-0.63	5.72	-0.83	166	+68
Salina	81	36	59	+4	0.00	-0.73	6.82	+0.15	228	+109
Wilson Lake	77	41	58	+4	0.00	-0.53	4.30	-0.50	171	+81
South Central District										
Anthony	79	41	58	+2	0.00	-0.75	8.36	+1.02	213	+82
Hutchinson	80	34	59	+5	0.00	-0.66	4.74	-1.83	237	+131
Medicine Lodge	81	38	60	+4	0.00	-0.63	8.85	+2.65	253	+132
Newton	73	39	58	+3	0.00	-0.66	7.08	+0.65	212	+93
Wichita	76	39	60	+3	0.00	-0.59	10.54	+4.08	262	+133
Wilmore	80	38	58	+2	0.00	-0.49	8.10	+2.96	194	+73
Northeast District										
Baileyville	74	37	56	+2	0.00	-0.76	7.57	+0.76	151	+57
Holton	76	31	56	+3	0.00	-0.84	5.87	-1.23	156	+69
Horton	78	34	58	+3	0.02	-0.87	6.93	-0.34	185	+68
Leavenworth	77	32	56	+2	0.00	-0.89	7.59	-0.26	163	+62
Manhattan	77	37	58	+2	0.00	-0.74	6.50	-0.17	201	+79
Valley Falls	77	35	58	+3	0.00	-0.77	7.93	+0.88	217	+100
East Central District										
Emporia	77	34	59	+4	0.00	-0.70	6.89	+0.14	248	+146
Eskridge	75	38	56	+3	0.00	-0.77	9.15	+2.00	160	+77
Garnett	77	34	57	-1	0.00	-0.84	10.46	+2.01	202	+56
Lawrence	79	41	60	+3	0.00	-0.86	8.44	+0.66	246	+100
Ottawa	77	33	57	-3	0.03	-0.82	7.50	-0.61	195	+40
Tallgrass Prairie	77	36	58	+4	0.00	-0.72	7.38	+0.34	203	+104
Topeka	79	35	60	+5	0.00	-0.81	7.40	+0.58	249	+141
Southeast District										
Columbus	79	39	58	+2	0.58	-0.42	14.26	+4.20	246	+119
El Dorado	76	38	58	+2	0.00	-0.70	8.87	+1.53	226	+109
Iola	77	37	58	+2	0.00	-0.87	9.49	+0.59	227	+105
Parsons	77	36	57	-1	0.00	-0.90	11.88	+2.54	212	+84
Pittsburg	77	40	59	+2	0.51	-0.43	12.15	+1.86	253	+114
Winfield	77	38	60	+3	0.00	-0.77	9.56	+1.29	278	+154

Source: Agricultural Weather Information Service, Inc. © 2012 based on NWS data. DFN = Departure From Normal (1970-2000).

^{1/} Corn growing degree days: (High Temp. - Low Temp.) / 2 - 50. ^{1/} 7:00 a.m. Sunday to 7:00 a.m. Sunday.

Kansas Topsoil Moisture Monthly 2011 - 2012



An audio summary of this report will be available at:

http://www.nass.usda.gov/Statistics_by_State/Kansas/Publications/Crop_Progress_and_Condition/index.asp

**This is a cooperative effort with Kansas State Research & Extension Service,
USDA-Farm Service Agency, and Kansas Agricultural Statistics**

NASS provides accurate, timely, useful and objective statistics in service to U.S. agriculture. The Agency invites you to express your thoughts and provide occasional feedback on our products and services by joining a data user community. To join, sign in at <http://usda.mannlib.cornell.edu/subscriptions> and look for "NASS Data User Community."

2012 CENSUS OF AGRICULTURE

**YOUR VOICE.
YOUR FUTURE.
YOUR RESPONSIBILITY.**

www.agcensus.usda.gov

