



Missouri Crop Progress and Condition

Released August 30, 2021

There were 6.7 days suitable for fieldwork for the week ending August 29, 2021. Temperatures last week averaged 81.6 degrees statewide, 5.7 degrees above normal. Precipitation averaged 0.29 inches, 0.49 inches below normal. Topsoil moisture supply was rated 4 percent very short, 27 percent short, 67 percent adequate, and 2 percent surplus. Subsoil moisture supply was rated 3 percent very short, 21 percent short, 74 percent adequate, and 2 percent surplus. Corn dough was 96 percent, compared to the 5-year average of 95 percent. Corn dented was 73 percent, compared to the 5-year average of 77 percent. Corn mature was 11 percent, compared to the 5-year average of 17 percent. Corn condition was rated 2 percent very poor, 7 percent poor, 28 percent fair, 52 percent good, and 11 percent excellent. Soybeans blooming was 93 percent, compared to the 5-year average of 95 percent. Soybeans setting pods was 82 percent, compared to the 5-year average of 84 percent. Soybeans condition was rated 2 percent very poor, 7 percent poor, 32 percent fair, 52 percent good, and 7 percent excellent. Cotton bolls opening was 2 percent, compared to the 5-year average of 18 percent. Cotton condition was rated 5 percent poor, 24 percent fair, and 71 percent good. Rice harvested was 5 percent complete, compared to the 5-year average of 1 percent. Rice condition was rated 3 percent poor, 32 percent fair, 55 percent good, and 10 percent excellent.

Days Suitable for Fieldwork and Soil Moisture Supply: Week Ending August 29, 2021

State	Days Suitable for Fieldwork	Topsoil Moisture Supply				Subsoil Moisture Supply			
		Very Short	Short	Adequate	Surplus	Very Short	Short	Adequate	Surplus
Missouri	6.7	(percent) 4	(percent) 27	(percent) 67	(percent) 2	(percent) 3	(percent) 21	(percent) 74	(percent) 2

Crop Progress – Missouri

Item	Week ending			2016-2020 Average
	August 29, 2021	August 22, 2021	August 29, 2020	
	(percent)	(percent)	(percent)	(percent)
Corn dough	96	93	96	95
Corn dented	73	54	81	77
Corn mature	11	2	6	17
Soybeans blooming	93	90	96	95
Soybeans setting pods	82	70	87	84
Cotton bolls opening	2	(NA)	1	18
Rice harvested	5	(NA)	(NA)	1
Alfalfa hay 3rd cutting	81	70	82	82

(NA) Not available.

Corn Condition – Missouri

Date	Very Poor	Poor	Fair	Good	Excellent
	(percent)	(percent)	(percent)	(percent)	(percent)
August 29, 2021	2	7	28	52	11
August 22, 2021	2	7	28	51	12
August 29, 2020	2	3	18	61	16

Soybeans Condition – Missouri

Date	Very Poor	Poor	Fair	Good	Excellent
	(percent)	(percent)	(percent)	(percent)	(percent)
August 29, 2021	2	7	32	52	7
August 22, 2021	1	6	32	53	8
August 29, 2020	1	4	20	62	13

Cotton Condition – Missouri

Date	Very Poor	Poor	Fair	Good	Excellent
	(percent)	(percent)	(percent)	(percent)	(percent)
August 29, 2021	-	5	24	71	-
August 22, 2021	-	6	24	70	-
August 29, 2020	2	12	36	49	1

- Represents zero.

Rice Condition – Missouri

Date	Very Poor	Poor	Fair	Good	Excellent
	(percent)	(percent)	(percent)	(percent)	(percent)
August 29, 2021	-	3	32	55	10
August 22, 2021	-	4	35	57	4
August 29, 2020	1	6	28	49	16

- Represents zero.

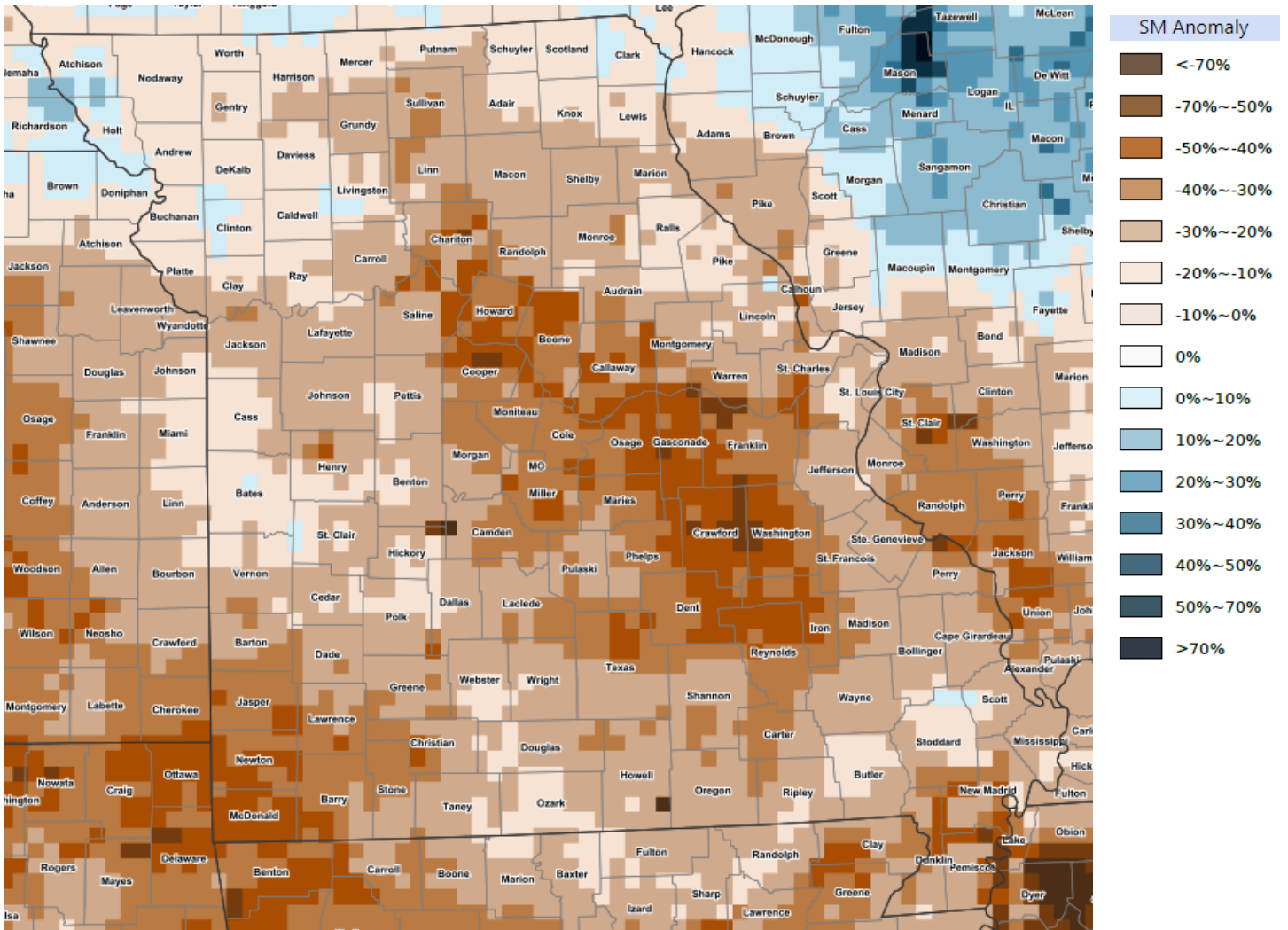
Pasture Condition – Missouri

Date	Very Poor	Poor	Fair	Good	Excellent
	(percent)	(percent)	(percent)	(percent)	(percent)
August 29, 2021	2	8	30	56	4
August 22, 2021	1	5	32	58	4
August 29, 2020	2	12	31	49	6

Supply of Hay and Other Roughages and Stock Water Supply: August 29, 2021

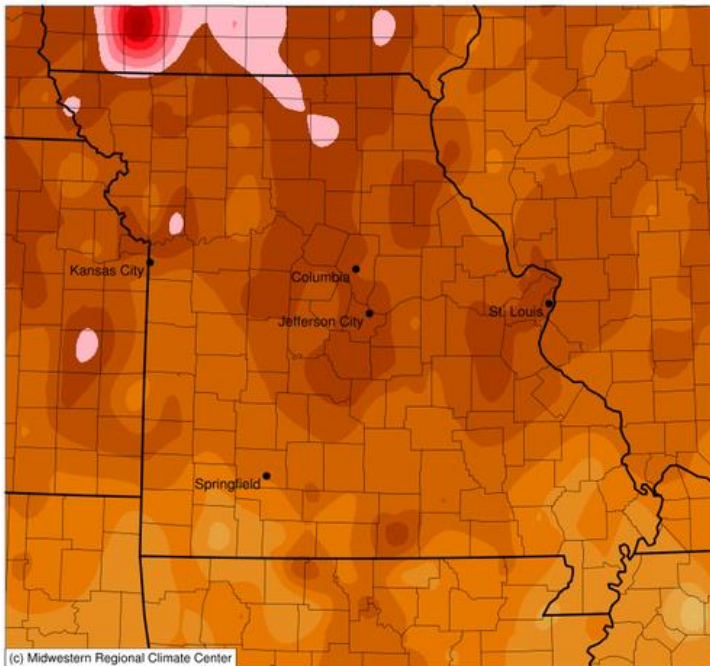
State	Supply of Hay and Other Roughages				Stock Water Supply			
	Very Short	Short	Adequate	Surplus	Very Short	Short	Adequate	Surplus
	(percent)	(percent)	(percent)	(percent)	(percent)	(percent)	(percent)	(percent)
Missouri	1	8	85	6	2	9	85	4

Soil Moisture Deviation from Historical Average – August 26



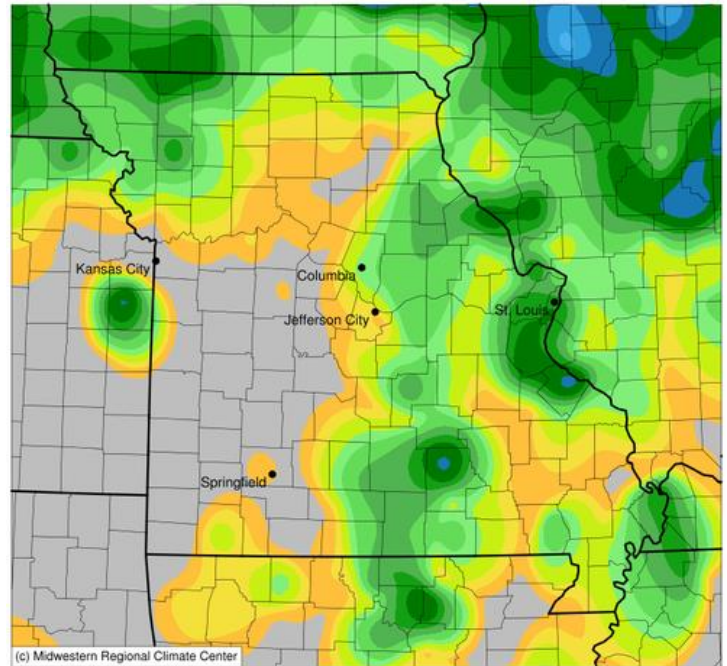
<https://cloud.csiss.gmu.edu/Crop-CASMA/>
(historical average includes 2015-2020)

Average Temperature (°F): Departure from 1991-2020 Normals
August 23, 2021 to August 29, 2021



0 5 10 15
Stations from the following networks used: WBAN, COOP, FAA, GHCN, ThreadEx, CoCoRaHS, WMO, ICAO, NWSLI, Missouri FSA, Missouri Mesonet, Midwestern Regional Climate Center
cli-MATE: MRCC Application Tools Environment
Generated at: 8/30/2021 10:05:24 AM CDT

Accumulated Precipitation (in)
August 23, 2021 to August 29, 2021



0.01 0.05 0.1 0.2 0.3 0.5 0.75 1 1.5 2 2.5 3 4
Stations from the following networks used: WBAN, COOP, FAA, GHCN, ThreadEx, CoCoRaHS, WMO, ICAO, NWSLI, Missouri FSA, Missouri Mesonet, Midwestern Regional Climate Center
cli-MATE: MRCC Application Tools Environment
Generated at: 8/30/2021 10:06:19 AM CDT

Access to NASS Reports

For your convenience, you may access NASS reports and products the following ways:

- All reports are available electronically, at no cost, on the NASS web site: <http://www.nass.usda.gov>
- Both national and state specific reports are available via a free e-mail subscription. To set-up this free subscription, visit <http://www.nass.usda.gov> and in the “Follow NASS” box under “Receive reports by Email,” click on “National” or “State” to select the reports you would like to receive.
- Follow us on Twitter @usda_nass

For more information on NASS surveys and reports, call the Heartland Regional Field Office at (314) 595-9594 or e-mail: nassrfohrl@usda.gov.