



Missouri Crop Progress and Condition

Released June 27, 2022

There were 6.0 days suitable for fieldwork during the week ending June 26, 2022. Temperatures last week averaged 77.8 degrees statewide, 2.7 degrees above normal. Precipitation averaged 0.41 inches, 0.65 inch below normal. Topsoil moisture supply was rated 2 percent very short, 32 percent short, 63 percent adequate and 3 percent surplus. Subsoil moisture supply was rated 2 percent very short, 16 percent short, 80 percent adequate, and 2 percent surplus. Corn silking was 1 percent compared to the 5-year average of 8 percent. Corn condition was rated at 1 percent very poor, 5 percent poor, 25 percent fair, 61 percent good, and 8 percent excellent. Soybeans planted was 93 percent complete, compared to the 5-year average of 91 percent. Soybeans emerged was 79 percent compared to the 5-year average of 82 percent. Soybeans blooming was 1 percent compared to the 5-year average of 6 percent. Soybean condition was rated at 1 percent very poor, 5 percent poor, 35 percent fair, 54 percent good, and 5 percent excellent. Cotton squaring was at 27 percent compared to the 5-year average of 37 percent. Cotton condition was rated at 6 percent very poor, 8 percent poor, 26 percent fair, and 60 percent good. Rice condition was rated at 6 percent poor, 27 percent fair, 56 percent good and 11 percent excellent. Winter wheat harvested for grain was at 65 percent compared to the 5-year average of 58 percent. Winter wheat condition was rated 1 percent very poor, 11 percent poor, 27 percent fair, 52 percent good and 9 percent excellent.

Days Suitable for Fieldwork and Soil Moisture Supply: Week Ending June 26, 2022

State	Days Suitable for Fieldwork	Topsoil Moisture Supply				Subsoil Moisture Supply			
		Very Short	Short	Adequate	Surplus	Very Short	Short	Adequate	Surplus
Missouri	6.0	(percent) 2	(percent) 32	(percent) 63	(percent) 3	(percent) 2	(percent) 16	(percent) 80	(percent) 2

Crop Progress – Missouri

Item	Week ending			2017-2021 Average
	June 26, 2022	June 19, 2022	June 26, 2021	
	(percent)	(percent)	(percent)	(percent)
Corn silking	1	(NA)	2	8
Soybeans planted	93	85	95	91
Soybeans emerged	79	69	87	82
Soybeans blooming	1	(NA)	6	6
Cotton squaring	27	6	74	37
Winter wheat harvested	65	34	48	58
Alfalfa hay 1st cutting	90	80	95	94
Alfalfa hay 2nd cutting	5	(NA)	3	28
Other hay cut	66	52	66	70

(NA) Not available.

Corn Condition – Missouri

Date	Very Poor	Poor	Fair	Good	Excellent
	(percent)	(percent)	(percent)	(percent)	(percent)
June 26, 2022	1	5	25	61	8
June 19, 2022	1	5	24	60	10
June 26, 2021	1	9	32	51	7

Soybeans Condition – Missouri

Date	Very Poor	Poor	Fair	Good	Excellent
	(percent)	(percent)	(percent)	(percent)	(percent)
June 26, 2022	1	5	35	54	5
June 19, 2022	1	5	34	53	7
June 26, 2021	1	5	37	51	6

Cotton Condition – Missouri

Date	Very Poor	Poor	Fair	Good	Excellent
	(percent)	(percent)	(percent)	(percent)	(percent)
June 26, 2022	6	8	26	60	-
June 19, 2022	5	7	26	62	-
June 26, 2021	-	7	25	68	-

- Represents zero.

Rice Condition – Missouri

Date	Very Poor	Poor	Fair	Good	Excellent
	(percent)	(percent)	(percent)	(percent)	(percent)
June 26, 2022	-	6	27	56	11
June 19, 2022	-	5	28	54	13
June 26, 2021	-	3	29	53	15

- Represents zero.

Winter Wheat Condition – Missouri

Date	Very Poor	Poor	Fair	Good	Excellent
	(percent)	(percent)	(percent)	(percent)	(percent)
June 26, 2022	1	11	27	52	9
June 19, 2022	1	11	29	50	9
June 26, 2021	1	10	40	43	6

Pasture Condition – Missouri

Date	Very Poor	Poor	Fair	Good	Excellent
	(percent)	(percent)	(percent)	(percent)	(percent)
June 26, 2022	1	3	36	54	6
June 19, 2022	-	1	31	62	6
June 26, 2021	1	4	23	65	7

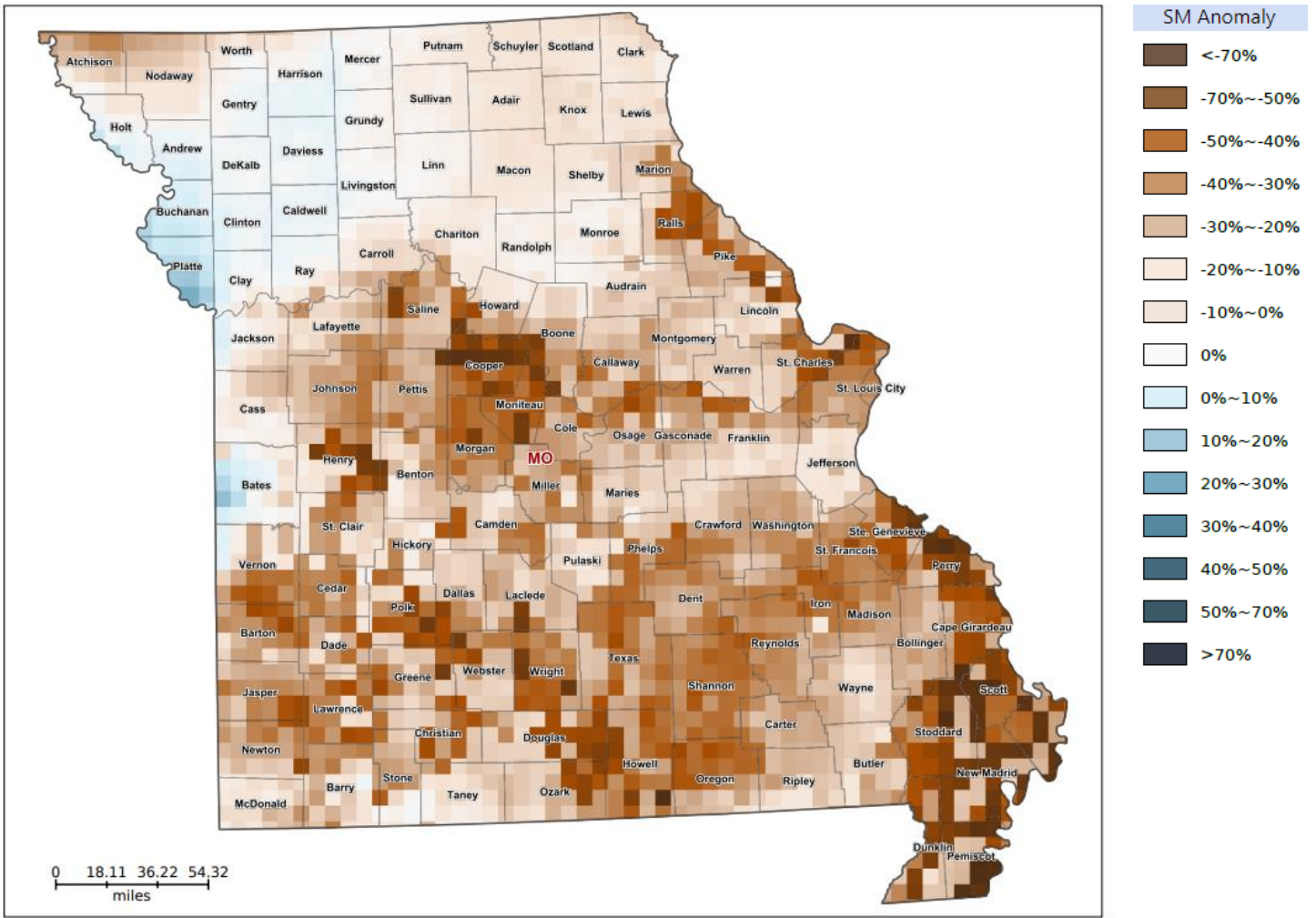
- Represents zero.

Supply of Hay and Other Roughages and Stock Water Supply: June 26, 2022

State	Supply of Hay and Other Roughages				Stock Water Supply			
	Very Short	Short	Adequate	Surplus	Very Short	Short	Adequate	Surplus
	(percent)	(percent)	(percent)	(percent)	(percent)	(percent)	(percent)	(percent)
Missouri	-	8	91	1	-	3	90	7

- Represents zero.

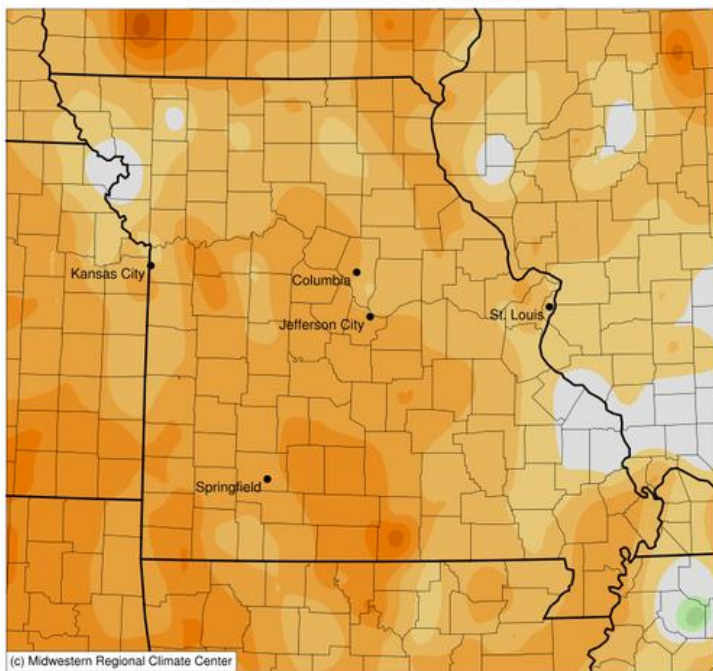
Soil Moisture Deviation from Historical Average – June 23



<https://cloud.csiss.gmu.edu/Crop-CASMA/>
(historical average includes 2015-2020)

Average Temperature (°F): Departure from 1991-2020 Normals

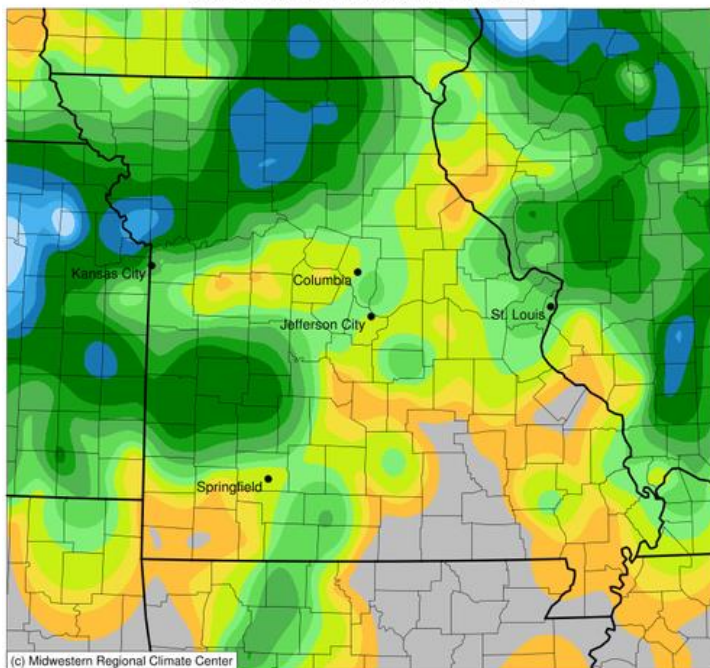
June 20, 2022 to June 26, 2022



Stations from the following networks used: WBAN, COOP, FAA, GHCN, ThreadEx, CoCoRaHS, WMO, ICAO, NWSLI, Missouri FSA, Missouri Mesonet, Midwest Regional Climate Center
cli-MATE: MRCC Application Tools Environment
Generated at: 6/27/2022 10:03:20 AM CDT

Accumulated Precipitation (in)

June 20, 2022 to June 26, 2022



Stations from the following networks used: WBAN, COOP, FAA, GHCN, ThreadEx, CoCoRaHS, WMO, ICAO, NWSLI, Missouri FSA, Missouri Mesonet, Midwest Regional Climate Center
cli-MATE: MRCC Application Tools Environment
Generated at: 6/27/2022 10:06:03 AM CDT

Access to NASS Reports

For your convenience, you may access NASS reports and products the following ways:

- All reports are available electronically, at no cost, on the NASS web site: <http://www.nass.usda.gov>
- Both national and state specific reports are available via a free e-mail subscription. To set-up this free subscription, visit <http://www.nass.usda.gov> and in the “Follow NASS” box under “Receive reports by Email,” click on “National” or “State” to select the reports you would like to receive.
- Follow us on Twitter @usda_nass

For more information on NASS surveys and reports, call the Heartland Regional Field Office at (314) 595-9594 or e-mail: nassrfohlr@usda.gov.