



Missouri Crop Progress and Condition

Released August 15, 2022

There were 6.2 days suitable for fieldwork during the week ending August 14, 2022. Topsoil moisture supply rated 17 percent very short, 41 percent short and 42 percent adequate. Subsoil moisture supply rated 16 percent very short, 40 percent short and 44 percent adequate. Corn dough was 81 percent, even with the 5-year average. Corn dented was 34 percent, compared to the 5-year average of 39 percent. Corn condition rated 12 percent very poor, 16 percent poor, 26 percent fair, 38 percent good and 8 percent excellent. Soybeans blooming was 84 percent, compared to the 5-year average of 85 percent. Soybeans setting pods was 58 percent, compared to the 5-year average of 60 percent. Soybeans condition rated 6 percent very poor, 16 percent poor, 32 percent fair, 38 percent good and 8 percent excellent. Cotton squaring was 94 percent, compared to the 5-year average of 96 percent. Cotton setting bolls was 82 percent, compared to the 5-year average of 80 percent. Cotton condition rated 9 percent very poor, 10 percent poor, 33 percent fair and 48 percent good. Rice headed was 71 percent, compared to the 5-year average of 78 percent. Rice condition rated 3 percent very poor, 7 percent poor, 37 percent fair, 39 percent good and 14 percent excellent.

Days Suitable for Fieldwork and Soil Moisture Supply: Week Ending August 14, 2022

State	Days Suitable for Fieldwork	Topsoil Moisture Supply				Subsoil Moisture Supply			
		Very Short	Short	Adequate	Surplus	Very Short	Short	Adequate	Surplus
Missouri	6.2	(percent) 17	(percent) 41	(percent) 42	(percent) -	(percent) 16	(percent) 40	(percent) 44	(percent) -

- Represents zero.

Crop Progress – Missouri

Item	Week ending			2017-2021 Average
	August 14, 2022	August 7, 2022	August 14, 2021	
	(percent)	(percent)	(percent)	(percent)
Corn dough	81	66	80	81
Corn dented	34	6	25	39
Soybeans blooming	84	78	83	85
Soybeans setting pods	58	44	57	60
Cotton squaring	94	91	100	96
Cotton setting bolls	82	67	94	80
Rice headed	71	49	81	78
Alfalfa hay 3rd cutting	51	35	57	63

Corn Condition – Missouri

Date	Very Poor	Poor	Fair	Good	Excellent
	(percent)	(percent)	(percent)	(percent)	(percent)
August 14, 2022	12	16	26	38	8
August 7, 2022	12	13	24	44	7
August 14, 2021	2	5	26	54	13

Soybeans Condition – Missouri

Date	Very Poor	Poor	Fair	Good	Excellent
	(percent)	(percent)	(percent)	(percent)	(percent)
August 14, 2022	6	16	32	38	8
August 7, 2022	8	13	30	42	7
August 14, 2021	1	5	29	56	9

Cotton Condition – Missouri

Date	Very Poor	Poor	Fair	Good	Excellent
	(percent)	(percent)	(percent)	(percent)	(percent)
August 14, 2022	9	10	33	48	-
August 7, 2022	10	11	32	47	-
August 14, 2021	-	4	30	66	-

- Represents zero.

Rice Condition – Missouri

Date	Very Poor	Poor	Fair	Good	Excellent
	(percent)	(percent)	(percent)	(percent)	(percent)
August 14, 2022	3	7	37	39	14
August 7, 2022	3	8	38	35	16
August 14, 2021	-	2	30	55	13

- Represents zero.

Pasture Condition – Missouri

Date	Very Poor	Poor	Fair	Good	Excellent
	(percent)	(percent)	(percent)	(percent)	(percent)
August 14, 2022	10	35	33	21	1
August 7, 2022	13	33	33	20	1
August 14, 2021	-	3	28	63	6

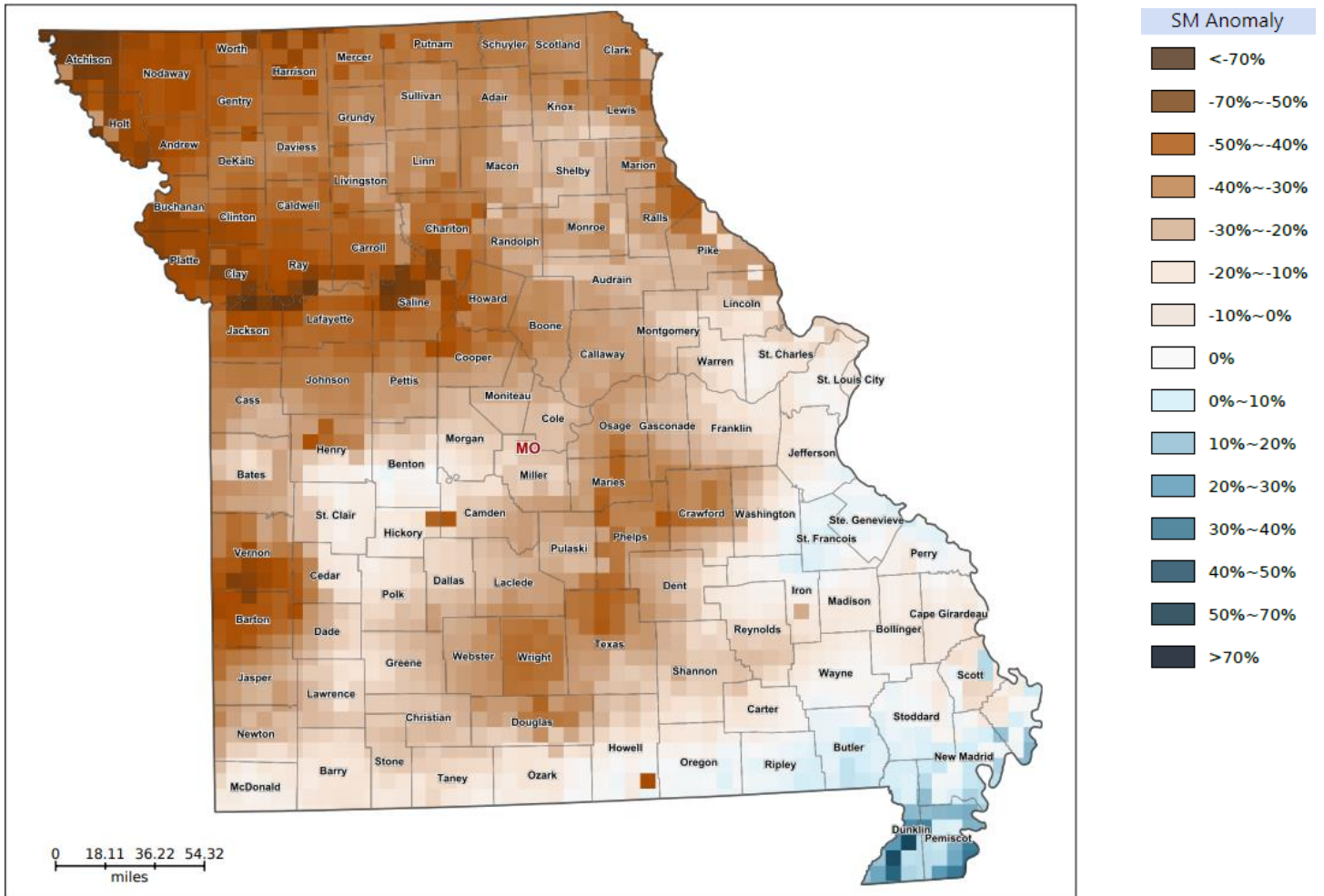
- Represents zero.

Supply of Hay and Other Roughages and Stock Water Supply: August 14, 2022

State	Supply of Hay and Other Roughages				Stock Water Supply			
	Very Short	Short	Adequate	Surplus	Very Short	Short	Adequate	Surplus
	(percent)	(percent)	(percent)	(percent)	(percent)	(percent)	(percent)	(percent)
Missouri	3	36	61	-	3	22	71	4

- Represents zero.

Soil Moisture Deviation from Historical Average – August 11



<https://cloud.csiss.gmu.edu/Crop-CASMA/>
(historical average includes 2015-2020)

Access to NASS Reports

For your convenience, you may access NASS reports and products the following ways:

- All reports are available electronically, at no cost, on the NASS web site: <http://www.nass.usda.gov>
- Both national and state specific reports are available via a free e-mail subscription. To set-up this free subscription, visit <http://www.nass.usda.gov> and in the “Follow NASS” box under “Receive reports by Email,” click on “National” or “State” to select the reports you would like to receive.
- Follow us on Twitter @usda_nass

For more information on NASS surveys and reports, call the Heartland Regional Field Office at (314) 595-9594 or e-mail: nassrfohlr@usda.gov.