



Missouri Crop Progress and Condition

Released August 22, 2022

There were 5.2 days suitable for fieldwork during the week ending August 21, 2022. Temperatures last week averaged 72.7 degrees, 3.7 degrees below normal. Precipitation averaged 1.66 inches, 0.96 inches above normal. Topsoil moisture supply rated 12 percent very short, 31 percent short and 57 percent adequate. Subsoil moisture supply rated 11 percent very short, 33 percent short and 56 percent adequate. Corn dough was 91 percent, compared to the 5-year average of 89 percent. Corn dented was 55 percent, compared to the 5-year average of 59 percent. Corn mature was 3 percent, compared to the 5-year average of 4 percent. Corn condition rated 12 percent very poor, 16 percent poor, 23 percent fair, 41 percent good and 8 percent excellent. Soybeans blooming was 91 percent, even with the 5-year average. Soybeans setting pods was 73 percent, compared to the 5-year average of 72 percent. Soybeans condition rated 7 percent very poor, 12 percent poor, 30 percent fair, 42 percent good and 9 percent excellent. Cotton squaring was 98 percent, compared, even with the 5-year average. Cotton setting bolls was 90 percent, compared to the 5-year average of 88 percent. Cotton bolls opening was 2 percent, compared to the 5-year average of 11 percent. Cotton condition rated 9 percent very poor, 9 percent poor, 30 percent fair and 52 percent good. Rice headed was 90 percent, compared to the 5-year average of 89 percent. Rice condition rated 3 percent very poor, 7 percent poor, 37 percent fair, 39 percent good and 14 percent excellent.

Days Suitable for Fieldwork and Soil Moisture Supply: Week Ending August 21, 2022

| State | Days Suitable for Fieldwork | Topsoil Moisture Supply | | | | Subsoil Moisture Supply | | | |
|----------------|-----------------------------|-------------------------|-----------------|-----------------|----------------|-------------------------|-----------------|-----------------|----------------|
| | | Very Short | Short | Adequate | Surplus | Very Short | Short | Adequate | Surplus |
| Missouri | 5.2 | (percent) 12 | (percent) 31 | (percent) 57 | (percent) - | (percent) 11 | (percent) 33 | (percent) 56 | (percent) - |

- Represents zero.

Crop Progress – Missouri

| Item | Week ending | | | 2017-2021 Average |
|-------------------------------|-----------------|-----------------|-----------------|-------------------|
| | August 21, 2022 | August 14, 2022 | August 21, 2021 | |
| | (percent) | (percent) | (percent) | (percent) |
| Corn dough | 91 | 81 | 91 | 89 |
| Corn dented | 55 | 34 | 50 | 59 |
| Corn mature | 3 | (NA) | 2 | 4 |
| Soybeans blooming | 91 | 84 | 89 | 91 |
| Soybeans setting pods | 73 | 58 | 68 | 72 |
| Cotton squaring | 98 | 94 | 100 | 98 |
| Cotton setting bolls | 90 | 82 | 96 | 88 |
| Cotton bolls opening | 2 | (NA) | (NA) | 11 |
| Rice headed | 90 | 71 | 95 | 89 |
| Alfalfa hay 3rd cutting | 69 | 51 | 68 | 72 |

(NA) Not available.

Corn Condition – Missouri

| Date | Very Poor | Poor | Fair | Good | Excellent |
|-----------------------|-----------|-----------|-----------|-----------|-----------|
| | (percent) | (percent) | (percent) | (percent) | (percent) |
| August 21, 2022 | 12 | 16 | 23 | 41 | 8 |
| August 14, 2022 | 12 | 16 | 26 | 38 | 8 |
| August 21, 2021 | 2 | 7 | 28 | 51 | 12 |

Soybeans Condition – Missouri

| Date | Very Poor | Poor | Fair | Good | Excellent |
|-----------------------|-----------|-----------|-----------|-----------|-----------|
| | (percent) | (percent) | (percent) | (percent) | (percent) |
| August 21, 2022 | 7 | 12 | 30 | 42 | 9 |
| August 14, 2022 | 6 | 16 | 32 | 38 | 8 |
| August 21, 2021 | 1 | 6 | 32 | 53 | 8 |

Cotton Condition – Missouri

| Date | Very Poor | Poor | Fair | Good | Excellent |
|-----------------------|-----------|-----------|-----------|-----------|-----------|
| | (percent) | (percent) | (percent) | (percent) | (percent) |
| August 21, 2022 | 9 | 9 | 30 | 52 | - |
| August 14, 2022 | 9 | 10 | 33 | 48 | - |
| August 21, 2021 | - | 6 | 24 | 70 | - |

- Represents zero.

Rice Condition – Missouri

| Date | Very Poor | Poor | Fair | Good | Excellent |
|-----------------------|-----------|-----------|-----------|-----------|-----------|
| | (percent) | (percent) | (percent) | (percent) | (percent) |
| August 21, 2022 | 3 | 7 | 37 | 39 | 14 |
| August 14, 2022 | 3 | 7 | 37 | 39 | 14 |
| August 21, 2021 | - | 4 | 35 | 57 | 4 |

- Represents zero.

Pasture Condition – Missouri

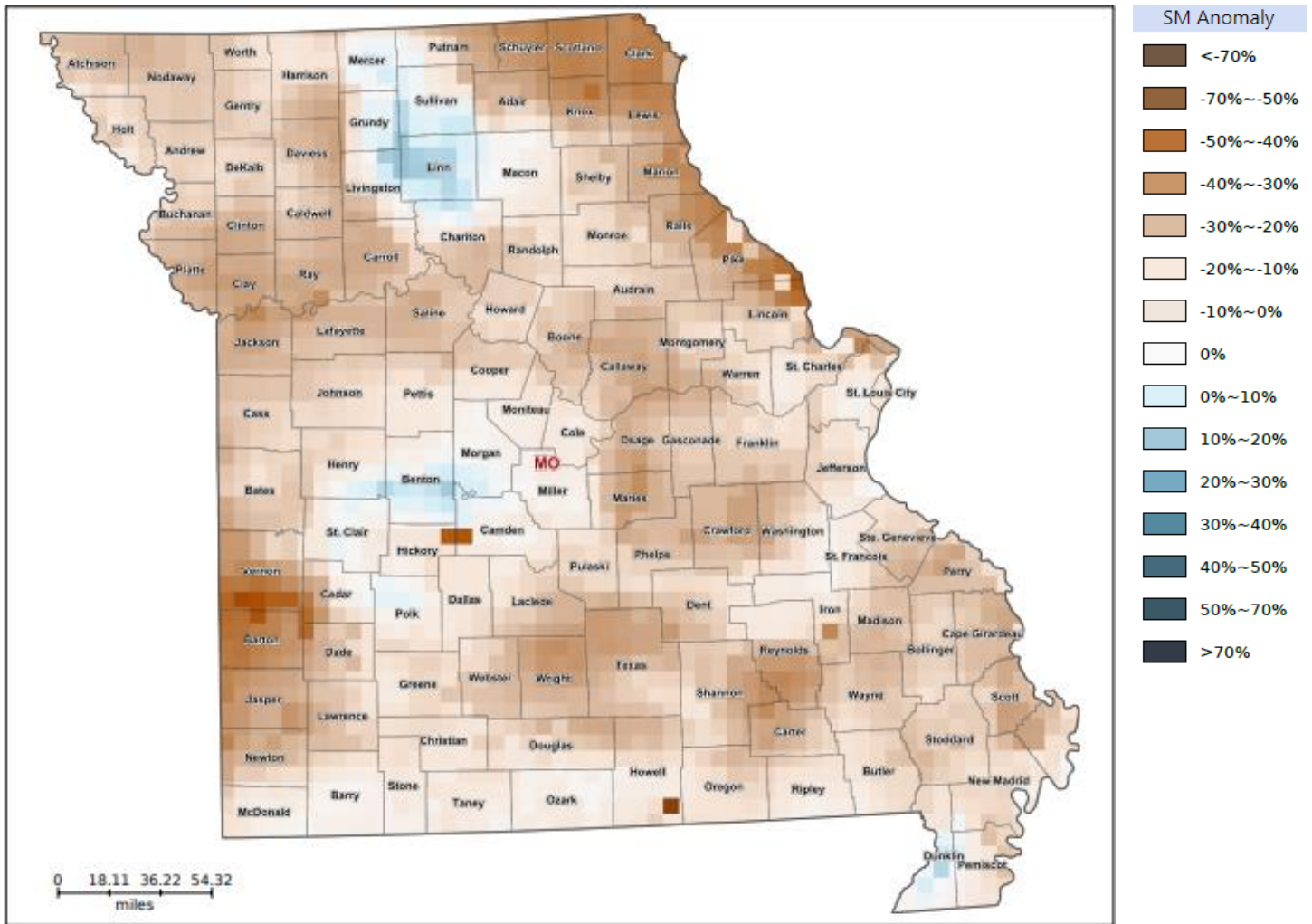
| Date | Very Poor | Poor | Fair | Good | Excellent |
|-----------------------|-----------|-----------|-----------|-----------|-----------|
| | (percent) | (percent) | (percent) | (percent) | (percent) |
| August 21, 2022 | 8 | 16 | 43 | 31 | 2 |
| August 14, 2022 | 10 | 35 | 33 | 21 | 1 |
| August 21, 2021 | 1 | 5 | 32 | 58 | 4 |

Supply of Hay and Other Roughages and Stock Water Supply: August 21, 2022

| State | Supply of Hay and Other Roughages | | | | Stock Water Supply | | | |
|----------------|-----------------------------------|-----------|-----------|-----------|--------------------|-----------|-----------|-----------|
| | Very Short | Short | Adequate | Surplus | Very Short | Short | Adequate | Surplus |
| | (percent) | (percent) | (percent) | (percent) | (percent) | (percent) | (percent) | (percent) |
| Missouri | 4 | 35 | 61 | - | 4 | 22 | 74 | - |

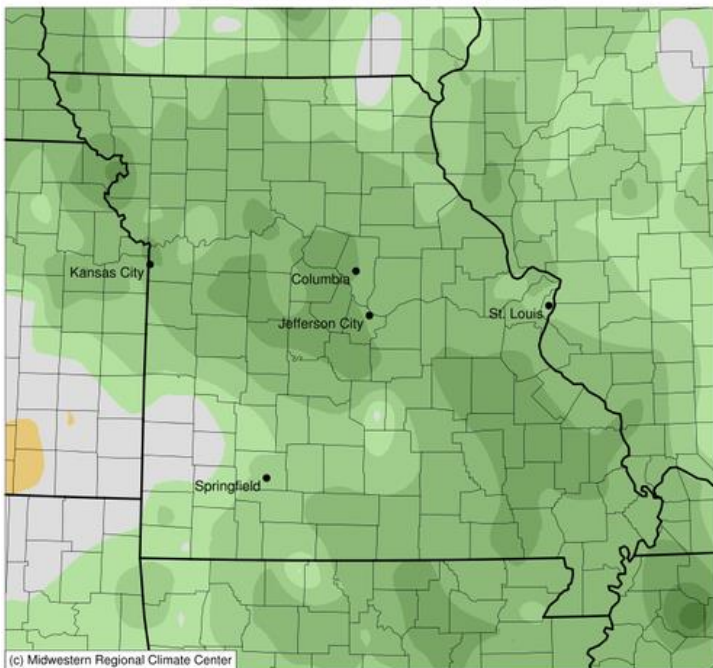
- Represents zero.

Soil Moisture Deviation from Historical Average – August 18



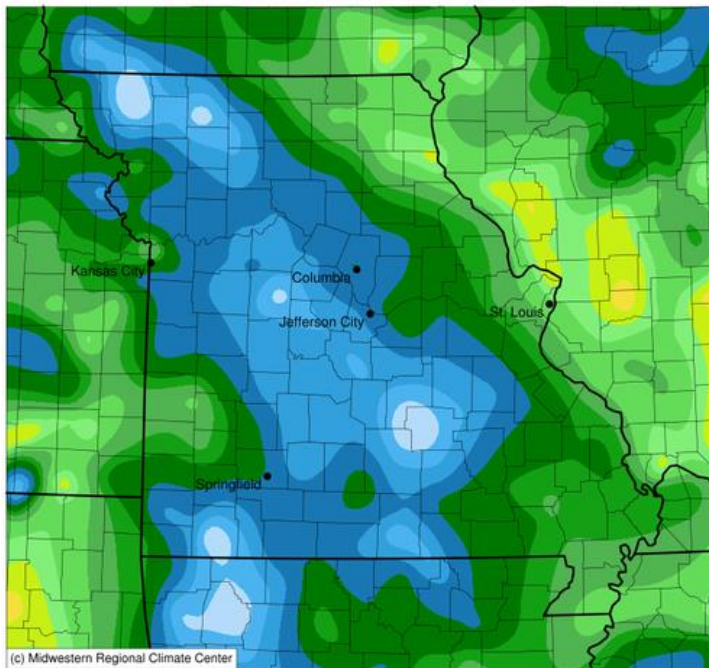
<https://cloud.csiss.gmu.edu/Crop-CASMA/>
 (historical average includes 2015-2020)

Average Temperature (°F): Departure from 1991-2020 Normals
 August 15, 2022 to August 21, 2022



-7 -6 -5 -4 -3 -2 -1 0 1 2 3
 Stations from the following networks used: WBAN, COOP, FAA, GHCN, ThreadEx, CoCoRaHS, WMO, ICAO, NWSLI, Missouri FSA, Missouri Mesonet, Midwest Regional Climate Center
 cli-MATE: MRCC Application Tools Environment
 Generated at: 8/22/2022 10:10:34 AM CDT

Accumulated Precipitation (in)
 August 15, 2022 to August 21, 2022



0.01 0.05 0.1 0.2 0.3 0.5 0.75 1 1.5 2 2.5 3 4
 Stations from the following networks used: WBAN, COOP, FAA, GHCN, ThreadEx, CoCoRaHS, WMO, ICAO, NWSLI, Missouri FSA, Missouri Mesonet, Midwest Regional Climate Center
 cli-MATE: MRCC Application Tools Environment
 Generated at: 8/22/2022 10:13:18 AM CDT

Access to NASS Reports

For your convenience, you may access NASS reports and products the following ways:

- All reports are available electronically, at no cost, on the NASS web site: <http://www.nass.usda.gov>
- Both national and state specific reports are available via a free e-mail subscription. To set-up this free subscription, visit <http://www.nass.usda.gov> and in the “Follow NASS” box under “Receive reports by Email,” click on “National” or “State” to select the reports you would like to receive.
- Follow us on Twitter @usda_nass

For more information on NASS surveys and reports, call the Heartland Regional Field Office at (314) 595-9594 or e-mail: nassrfohr@usda.gov.