



Missouri Crop Progress and Condition

Released August 29, 2022

There were 5.2 days suitable for fieldwork during the week ending August 28, 2022. Temperatures last week averaged 75.4 degrees, 0.7 degrees below normal. Precipitation averaged 0.18 inches, 0.64 inches below normal. Topsoil moisture supply rated 15 percent very short, 37 percent short and 48 percent adequate. Subsoil moisture supply rated 14 percent very short, 35 percent short and 51 percent adequate. Corn dough was 95 percent, even with the 5-year average. Corn dented was 73 percent, compared to the 5-year average of 74 percent. Corn mature was 15 percent, compared to the 5-year average of 13 percent. Corn condition rated 9 percent very poor, 16 percent poor, 23 percent fair, 46 percent good and 6 percent excellent. Soybeans blooming was 92 percent, compared to the 5-year average of 94 percent. Soybeans setting pods was 77 percent, compared to the 5-year average of 82 percent. Soybeans condition rated 5 percent very poor, 13 percent poor, 28 percent fair, 46 percent good and 8 percent excellent. Cotton setting bolls was 94 percent, even with the 5-year average. Cotton bolls opening was 10 percent, compared to the 5-year average of 17 percent. Cotton condition rated 9 percent very poor, 9 percent poor, 30 percent fair and 52 percent good. Rice headed was 98 percent, compared to the 5-year average of 94 percent. Rice condition rated 3 percent very poor, 7 percent poor, 37 percent fair, 39 percent good and 14 percent excellent.

Days Suitable for Fieldwork and Soil Moisture Supply: Week Ending August 28, 2022

State	Days Suitable for Fieldwork	Topsoil Moisture Supply				Subsoil Moisture Supply			
		Very Short	Short	Adequate	Surplus	Very Short	Short	Adequate	Surplus
Missouri	6.6	(percent) 15	(percent) 37	(percent) 48	(percent) -	(percent) 14	(percent) 35	(percent) 51	(percent) -

- Represents zero.

Crop Progress – Missouri

Item	Week ending			2017-2021 Average
	August 28, 2022	August 21, 2022	August 28, 2021	
	(percent)	(percent)	(percent)	(percent)
Corn dough	95	91	96	95
Corn dented	73	55	70	74
Corn mature	15	3	10	13
Soybeans blooming	92	91	93	94
Soybeans setting pods	77	73	80	82
Cotton setting bolls	94	90	97	94
Cotton bolls opening	10	2	2	17
Rice headed	98	90	98	94
Alfalfa hay 3rd cutting	75	69	79	81

Corn Condition – Missouri

Date	Very Poor	Poor	Fair	Good	Excellent
	(percent)	(percent)	(percent)	(percent)	(percent)
August 28, 2022	9	16	23	46	6
August 21, 2022	12	16	23	41	8
August 28, 2021	2	7	28	52	11

Soybeans Condition – Missouri

Date	Very Poor	Poor	Fair	Good	Excellent
	(percent)	(percent)	(percent)	(percent)	(percent)
August 28, 2022	5	13	28	46	8
August 21, 2022	7	12	30	42	9
August 28, 2021	2	7	32	52	7

Cotton Condition – Missouri

Date	Very Poor	Poor	Fair	Good	Excellent
	(percent)	(percent)	(percent)	(percent)	(percent)
August 28, 2022	9	9	30	52	-
August 21, 2022	9	9	30	52	-
August 28, 2021	-	5	24	71	-

- Represents zero.

Rice Condition – Missouri

Date	Very Poor	Poor	Fair	Good	Excellent
	(percent)	(percent)	(percent)	(percent)	(percent)
August 28, 2022	3	7	37	39	14
August 21, 2022	3	7	37	39	14
August 28, 2021	-	3	32	55	10

- Represents zero.

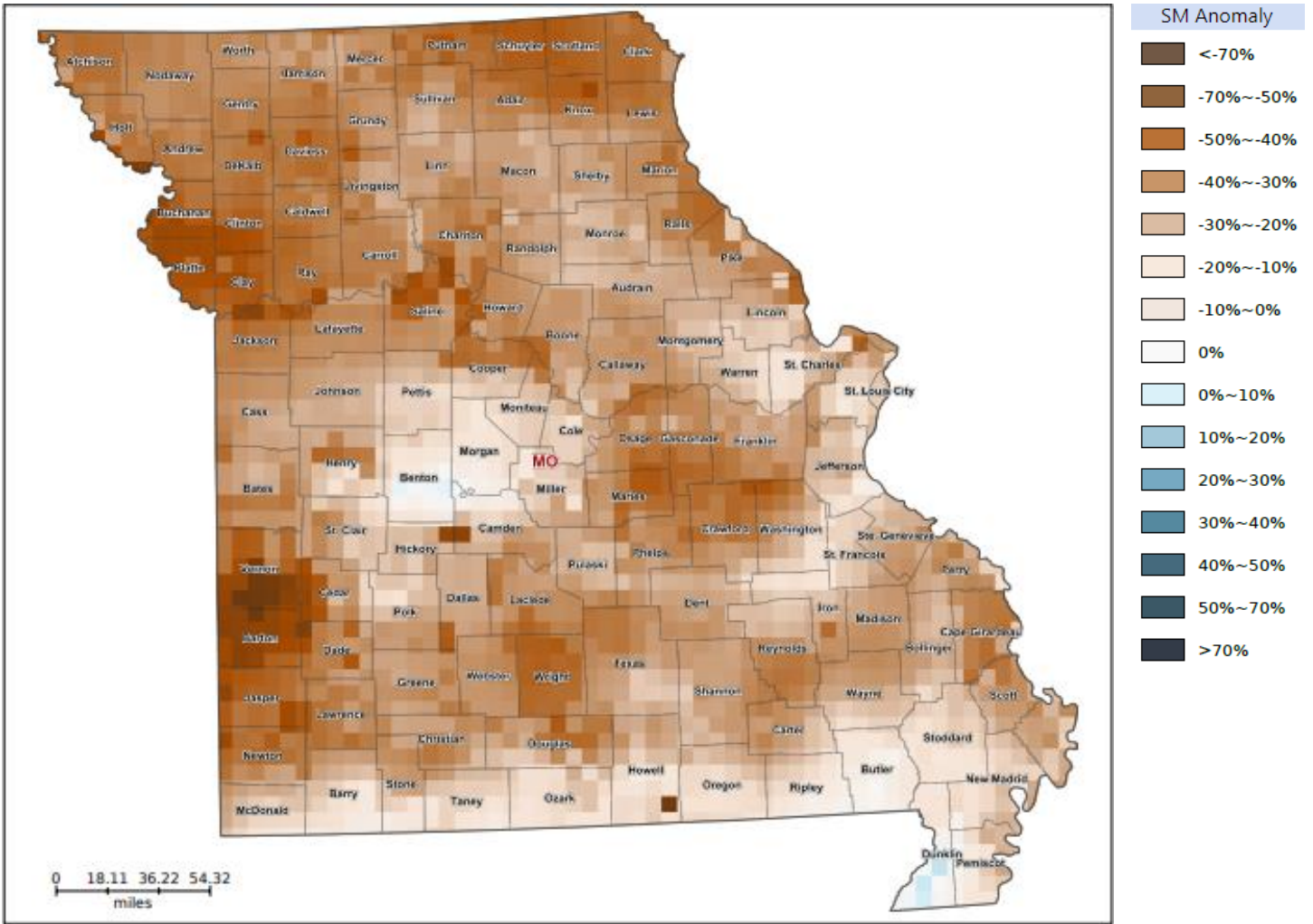
Pasture Condition – Missouri

Date	Very Poor	Poor	Fair	Good	Excellent
	(percent)	(percent)	(percent)	(percent)	(percent)
August 28, 2022	14	22	32	30	2
August 21, 2022	8	16	43	31	2
August 28, 2021	2	8	30	56	4

Supply of Hay and Other Roughages and Stock Water Supply: August 28, 2022

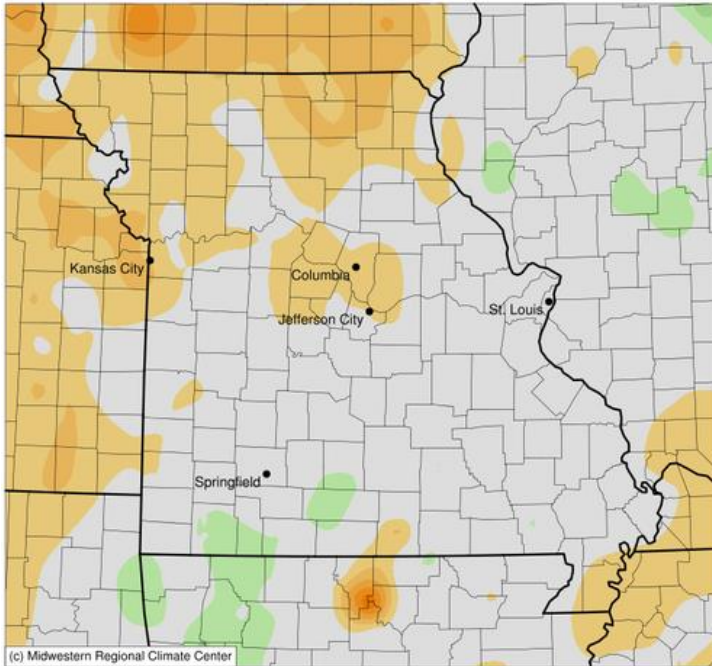
State	Supply of Hay and Other Roughages				Stock Water Supply			
	Very Short	Short	Adequate	Surplus	Very Short	Short	Adequate	Surplus
	(percent)	(percent)	(percent)	(percent)	(percent)	(percent)	(percent)	(percent)
Missouri	5	29	65	1	6	21	72	1

Soil Moisture Deviation from Historical Average – August 26



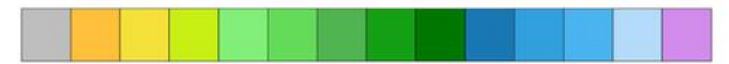
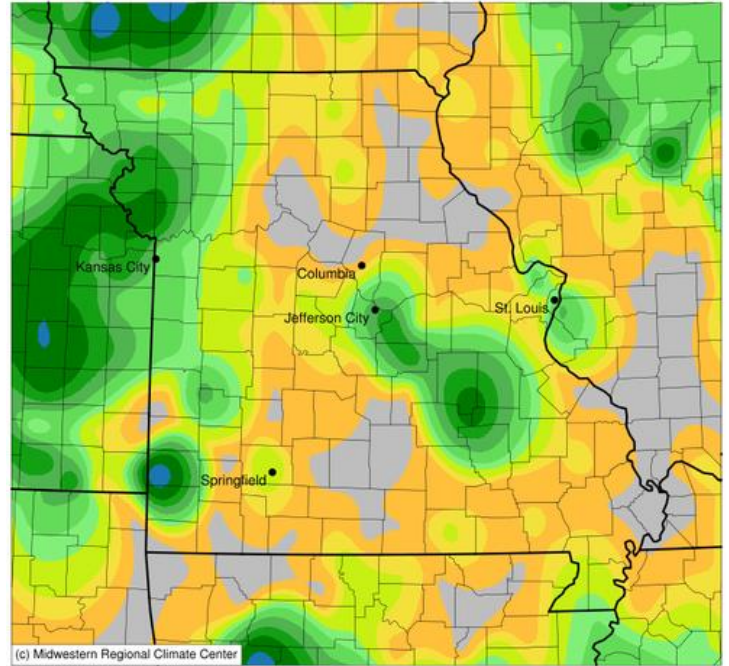
<https://cloud.csiss.gmu.edu/Crop-CASMA/>
 (historical average includes 2015-2020)

Average Temperature (°F): Departure from 1991-2020 Normals
August 22, 2022 to August 28, 2022



-2 -1 0 1 2 3 4 5 6 7
Stations from the following networks used: WBAN, COOP, FAA, GHCN, ThreadEx, CoCoRaHS, WMO, ICAO, NWSLI, Missouri FSA, Missouri Mesonet, Midwest Regional Climate Center
cli-MATE: MRCC Application Tools Environment
Generated at: 8/29/2022 10:24:22 AM CDT

Accumulated Precipitation (in)
August 22, 2022 to August 28, 2022



0.01 0.05 0.1 0.2 0.3 0.5 0.75 1 1.5 2 2.5 3 4
Stations from the following networks used: WBAN, COOP, FAA, GHCN, ThreadEx, CoCoRaHS, WMO, ICAO, NWSLI, Missouri FSA, Missouri Mesonet, Midwest Regional Climate Center
cli-MATE: MRCC Application Tools Environment
Generated at: 8/29/2022 10:27:44 AM CDT

Access to NASS Reports

For your convenience, you may access NASS reports and products the following ways:

- All reports are available electronically, at no cost, on the NASS web site: <http://www.nass.usda.gov>
- Both national and state specific reports are available via a free e-mail subscription. To set-up this free subscription, visit <http://www.nass.usda.gov> and in the “Follow NASS” box under “Receive reports by Email,” click on “National” or “State” to select the reports you would like to receive.
- Follow us on Twitter @usda_nass

For more information on NASS surveys and reports, call the Heartland Regional Field Office at (314) 595-9594 or e-mail: nassrfohlr@usda.gov.