



Missouri Crop Progress and Condition

Released September 12, 2022

There were 6.4 days suitable for fieldwork during the week ending September 11, 2022. Temperatures last week averaged 71.1 degrees, 0.7 degrees below normal. Precipitation averaged 0.47 inches, 0.22 inches below normal. Topsoil moisture supply rated 16 percent very short, 35 percent short and 49 percent adequate. Subsoil moisture supply rated 17 percent very short, 36 percent short and 47 percent adequate. Corn dented was 92 percent, compared to the 5-year average of 91 percent. Corn mature was 44 percent, event with the 5-year average. Corn harvested was 5 percent, compared to the 5-year average of 9 percent. Corn condition rated 8 percent very poor, 16 percent poor, 26 percent fair, 44 percent good and 6 percent excellent. Soybeans setting pods was 91 percent, compared to the 5-year average of 93 percent. Soybeans dropping leaves was 10 percent, compared to the 5-year average of 8 percent. Soybeans condition rated 4 percent very poor, 12 percent poor, 35 percent fair, 41 percent good and 8 percent excellent. Cotton bolls opening was 35 percent, compared to the 5-year average of 41 percent. Cotton condition rated 9 percent very poor, 9 percent poor, 30 percent fair and 52 percent good. Rice harvested was 2 percent compared to the 5-year average of 11 percent. Rice condition rated 3 percent very poor, 5 percent poor, 34 percent fair, 47 percent good and 11 percent excellent.

Days Suitable for Fieldwork and Soil Moisture Supply: Week Ending September 11, 2022

State	Days Suitable for Fieldwork	Topsoil Moisture Supply				Subsoil Moisture Supply			
		Very Short	Short	Adequate	Surplus	Very Short	Short	Adequate	Surplus
Missouri	6.4	(percent)	(percent)	(percent)	(percent)	(percent)	(percent)	(percent)	(percent)
		16	35	49	-	17	36	47	-

- Represents zero.

Crop Progress – Missouri

Item	Week ending			2017-2021 Average
	September 11, 2022	September 4, 2022	September 11, 2021	
	(percent)	(percent)	(percent)	(percent)
Corn dented	92	87	93	91
Corn mature	44	31	47	44
Corn harvested	5	1	6	9
Soybeans setting pods	91	84	93	93
Soybeans dropping leaves	10	3	9	8
Cotton bolls opening	35	17	27	41
Rice harvested	2	(NA)	15	11
Alfalfa hay 3rd cutting	91	85	93	91

(NA) Not available.

Corn Condition – Missouri

Date	Very Poor	Poor	Fair	Good	Excellent
	(percent)	(percent)	(percent)	(percent)	(percent)
September 11, 2022	8	16	26	44	6
September 4, 2022	10	16	24	44	6
September 11, 2021	2	7	27	54	10

Soybeans Condition – Missouri

Date	Very Poor	Poor	Fair	Good	Excellent
	(percent)	(percent)	(percent)	(percent)	(percent)
September 11, 2022	4	12	35	41	8
September 4, 2022	6	11	33	42	8
September 11, 2021	2	6	31	53	8

Cotton Condition – Missouri

Date	Very Poor	Poor	Fair	Good	Excellent
	(percent)	(percent)	(percent)	(percent)	(percent)
September 11, 2022	9	9	30	52	-
September 4, 2022	9	9	30	52	-
September 11, 2021	-	6	19	75	-

- Represents zero.

Rice Condition – Missouri

Date	Very Poor	Poor	Fair	Good	Excellent
	(percent)	(percent)	(percent)	(percent)	(percent)
September 11, 2022	3	5	34	47	11
September 4, 2022	3	5	37	43	12
September 11, 2021	-	3	31	56	10

- Represents zero.

Pasture Condition – Missouri

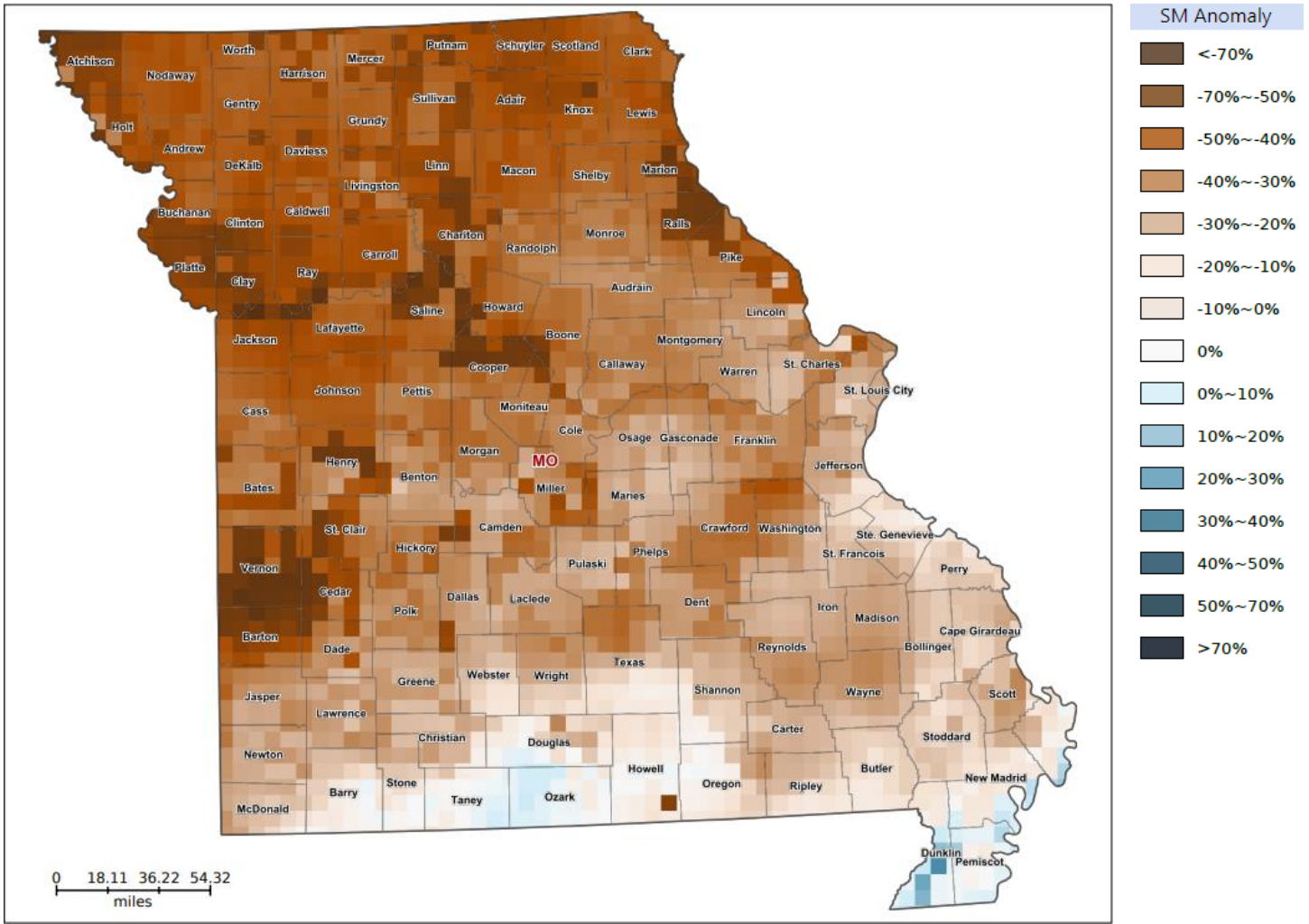
Date	Very Poor	Poor	Fair	Good	Excellent
	(percent)	(percent)	(percent)	(percent)	(percent)
September 11, 2022	10	17	42	30	1
September 4, 2022	9	15	41	33	2
September 11, 2021	1	8	28	58	5

Supply of Hay and Other Roughages and Stock Water Supply: September 11, 2022

State	Supply of Hay and Other Roughages				Stock Water Supply			
	Very Short	Short	Adequate	Surplus	Very Short	Short	Adequate	Surplus
	(percent)	(percent)	(percent)	(percent)	(percent)	(percent)	(percent)	(percent)
Missouri	8	30	62	-	5	22	72	1

- Represents zero.

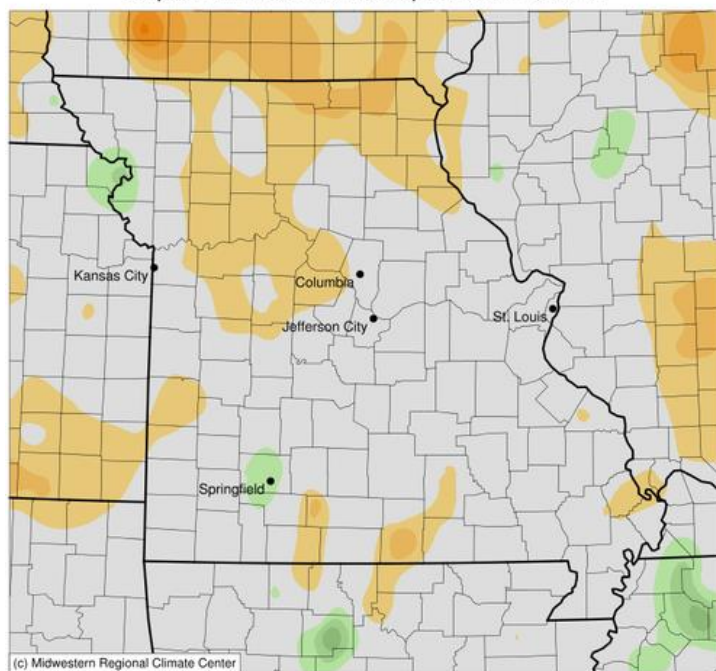
Soil Moisture Deviation from Historical Average – September 9



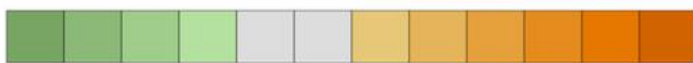
<https://cloud.csiss.gmu.edu/Crop-CASMA/>
(historical average includes 2015-2020)

Average Temperature (°F): Departure from 1991-2020 Normals

September 05, 2022 to September 11, 2022



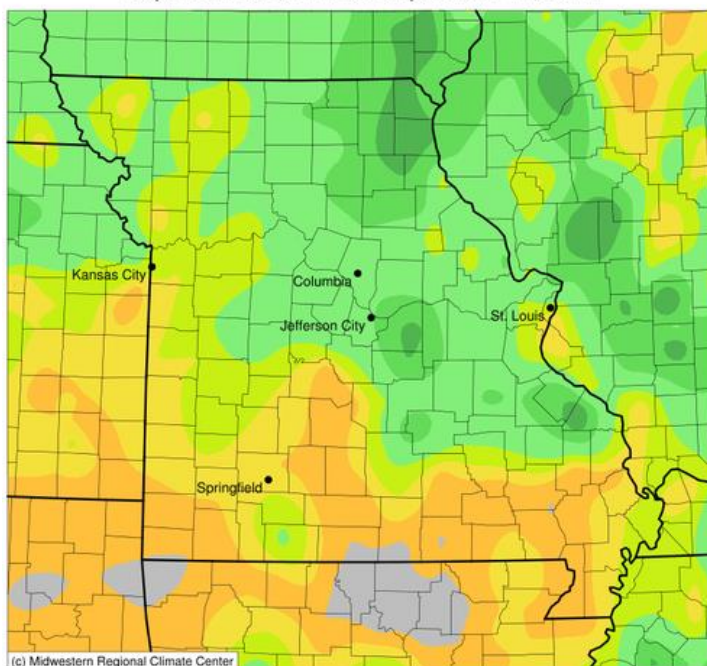
(c) Midwestern Regional Climate Center



-4 -3 -2 -1 0 1 2 3 4 5 6
Stations from the following networks used: WBAN, COOP, FAA, GHCN, ThreadEx, CoCoRaHS, WMO, ICAO, NWSLI, Missouri FSA, Missouri Mesonet, Midwestern Regional Climate Center
cli-MATE: MRCC Application Tools Environment
Generated at: 9/12/2022 10:06:05 AM CDT

Accumulated Precipitation (in)

September 05, 2022 to September 11, 2022



(c) Midwestern Regional Climate Center



0.01 0.1 0.25 0.5 1 1.5 2 2.5 3 4 5 6 8
Stations from the following networks used: WBAN, COOP, FAA, GHCN, ThreadEx, CoCoRaHS, WMO, ICAO, NWSLI, Missouri FSA, Missouri Mesonet, Midwestern Regional Climate Center
cli-MATE: MRCC Application Tools Environment
Generated at: 9/12/2022 10:07:52 AM CDT

Access to NASS Reports

For your convenience, you may access NASS reports and products the following ways:

- All reports are available electronically, at no cost, on the NASS web site: <http://www.nass.usda.gov>
- Both national and state specific reports are available via a free e-mail subscription. To set-up this free subscription, visit <http://www.nass.usda.gov> and in the "Follow NASS" box under "Receive reports by Email," click on "National" or "State" to select the reports you would like to receive.
- Follow us on Twitter @usda_nass

For more information on NASS surveys and reports, call the Heartland Regional Field Office at (314) 595-9594 or e-mail: nassrfohlr@usda.gov.