



Missouri Crop Progress and Condition

Released September 19, 2022

There were 6.4 days suitable for fieldwork during the week ending September 18, 2022. Temperatures last week averaged 70.8 degrees, 2.7 degrees above normal. Precipitation averaged 0.19 inches, 0.89 inches below normal. Topsoil moisture supply rated 20 percent very short, 38 percent short and 42 percent adequate. Subsoil moisture supply rated 20 percent very short, 34 percent short and 46 percent adequate. Corn dented was 96 percent, compared to the 5-year average of 95 percent. Corn mature was 64 percent, compared to the 5-year average of 63 percent. Corn harvested was 11 percent, compared to the 5-year average of 18 percent. Corn condition rated 9 percent very poor, 15 percent poor, 26 percent fair, 42 percent good and 8 percent excellent. Soybeans setting pods was 95 percent, even with the 5-year average. Soybeans dropping leaves was 27 percent, compared to the 5-year average of 20 percent. Soybeans condition rated 6 percent very poor, 11 percent poor, 35 percent fair, 39 percent good and 9 percent excellent. Cotton bolls opening was 55 percent, compared to the 5-year average of 61 percent. Cotton condition rated 9 percent very poor, 9 percent poor, 30 percent fair and 52 percent good. Rice harvested was 15 percent compared to the 5-year average of 26 percent. Rice condition rated 3 percent very poor, 5 percent poor, 34 percent fair, 46 percent good and 12 percent excellent.

Days Suitable for Fieldwork and Soil Moisture Supply: Week Ending September 18, 2022

State	Days Suitable for Fieldwork	Topsoil Moisture Supply				Subsoil Moisture Supply			
		Very Short	Short	Adequate	Surplus	Very Short	Short	Adequate	Surplus
Missouri	6.4	(percent)	(percent)	(percent)	(percent)	(percent)	(percent)	(percent)	(percent)
		20	38	42	-	20	34	46	-

- Represents zero.

Crop Progress – Missouri

Item	Week ending			2017-2021 Average
	September 18, 2022	September 11, 2022	September 18, 2021	
	(percent)	(percent)	(percent)	(percent)
Corn dented	96	92	96	95
Corn mature	64	44	70	63
Corn harvested	11	5	16	18
Soybeans setting pods	95	91	97	95
Soybeans dropping leaves	27	10	24	20
Cotton bolls opening	55	35	51	61
Rice harvested	15	2	25	26
Alfalfa hay 3rd cutting	95	91	96	93

Corn Condition – Missouri

Date	Very Poor	Poor	Fair	Good	Excellent
	(percent)	(percent)	(percent)	(percent)	(percent)
September 18, 2022	9	15	26	42	8
September 11, 2022	8	16	26	44	6
September 18, 2021	2	7	25	56	10

Soybeans Condition – Missouri

Date	Very Poor	Poor	Fair	Good	Excellent
	(percent)	(percent)	(percent)	(percent)	(percent)
September 18, 2022	6	11	35	39	9
September 11, 2022	4	12	35	41	8
September 18, 2021	2	6	30	55	7

Cotton Condition – Missouri

Date	Very Poor	Poor	Fair	Good	Excellent
	(percent)	(percent)	(percent)	(percent)	(percent)
September 18, 2022	9	9	30	52	-
September 11, 2022	9	9	30	52	-
September 18, 2021	-	5	24	71	-

- Represents zero.

Rice Condition – Missouri

Date	Very Poor	Poor	Fair	Good	Excellent
	(percent)	(percent)	(percent)	(percent)	(percent)
September 18, 2022	3	5	34	46	12
September 11, 2022	3	5	34	47	11
September 18, 2021	-	2	30	55	13

- Represents zero.

Pasture Condition – Missouri

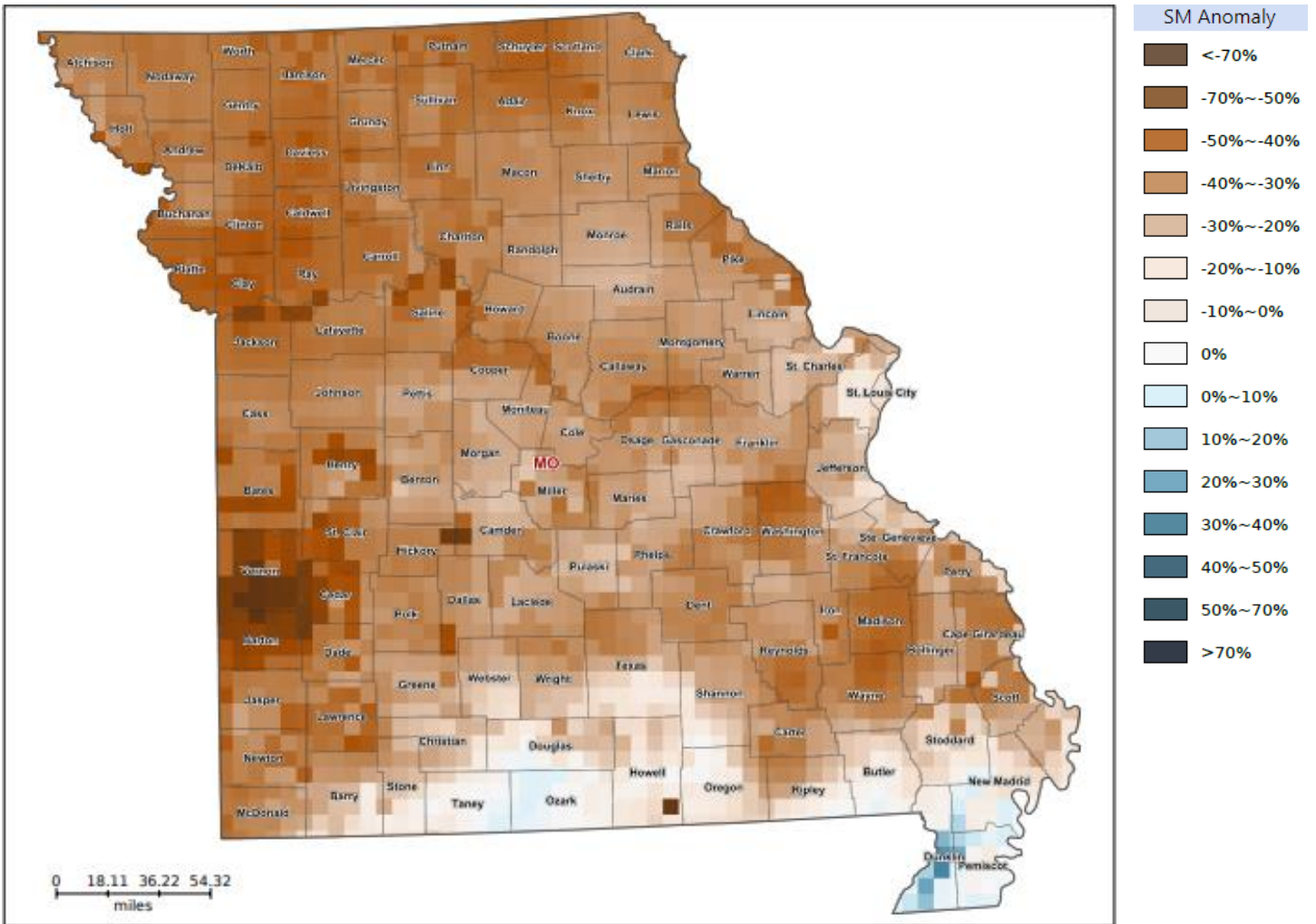
Date	Very Poor	Poor	Fair	Good	Excellent
	(percent)	(percent)	(percent)	(percent)	(percent)
September 18, 2022	16	20	34	29	1
September 11, 2022	10	17	42	30	1
September 18, 2021	2	13	32	49	4

Supply of Hay and Other Roughages and Stock Water Supply: September 18, 2022

State	Supply of Hay and Other Roughages				Stock Water Supply			
	Very Short	Short	Adequate	Surplus	Very Short	Short	Adequate	Surplus
	(percent)	(percent)	(percent)	(percent)	(percent)	(percent)	(percent)	(percent)
Missouri	11	26	63	-	8	25	67	-

- Represents zero.

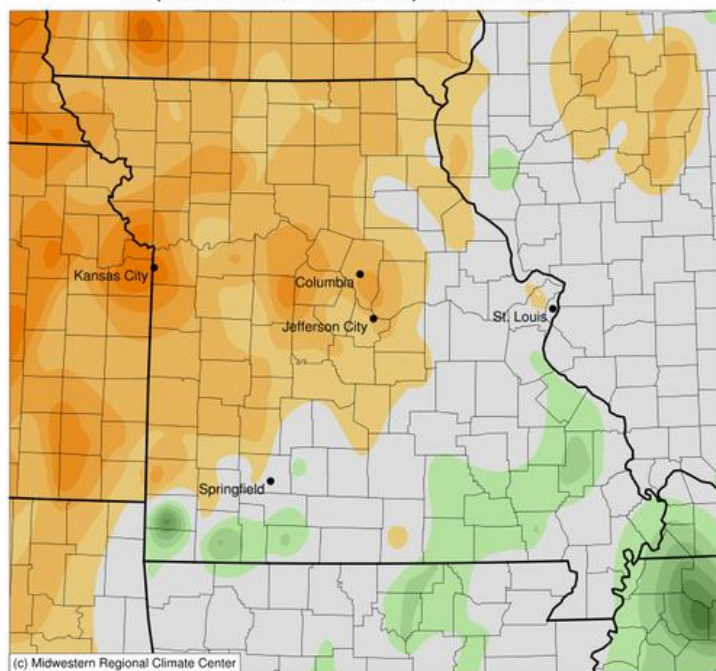
Soil Moisture Deviation from Historical Average – September 15



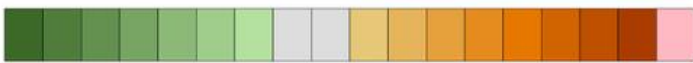
<https://cloud.csiss.gmu.edu/Crop-CASMA/>
(historical average includes 2015-2020)

Average Temperature (°F): Departure from 1991-2020 Normals

September 12, 2022 to September 18, 2022



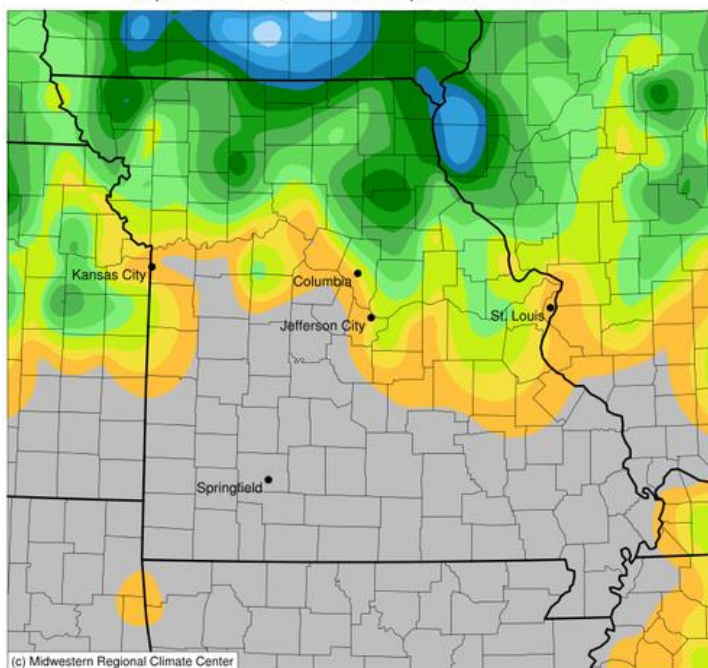
(c) Midwestern Regional Climate Center



-7 -2 3 8
Stations from the following networks used: WBAN, COOP, FAA, GHCN, ThreadEx, CoCoRaHS, WMO, ICAO, NWSLI, Missouri FSA, Missouri Mesonet, Midwestern Regional Climate Center
cli-MATE: MRCC Application Tools Environment
Generated at: 9/19/2022 10:09:20 AM CDT

Accumulated Precipitation (in)

September 12, 2022 to September 18, 2022



(c) Midwestern Regional Climate Center



0.01 0.05 0.1 0.2 0.3 0.5 0.75 1 1.5 2 2.5 3 4
Stations from the following networks used: WBAN, COOP, FAA, GHCN, ThreadEx, CoCoRaHS, WMO, ICAO, NWSLI, Missouri FSA, Missouri Mesonet, Midwestern Regional Climate Center
cli-MATE: MRCC Application Tools Environment
Generated at: 9/19/2022 10:11:18 AM CDT

Access to NASS Reports

For your convenience, you may access NASS reports and products the following ways:

- All reports are available electronically, at no cost, on the NASS web site: <http://www.nass.usda.gov>
- Both national and state specific reports are available via a free e-mail subscription. To set-up this free subscription, visit <http://www.nass.usda.gov> and in the "Follow NASS" box under "Receive reports by Email," click on "National" or "State" to select the reports you would like to receive.
- Follow us on Twitter @usda_nass

For more information on NASS surveys and reports, call the Heartland Regional Field Office at (314) 595-9594 or e-mail: nassrfohlr@usda.gov.