



Missouri Crop Progress and Condition

Released September 26, 2022

There were 6.3 days suitable for fieldwork during the week ending September 25, 2022. Temperatures last week averaged 82.2 degrees, 6.4 degrees above normal. Precipitation averaged 1.02 inches, 0.23 inches above normal. Topsoil moisture supply rated 23 percent very short, 40 percent short, 35 percent adequate, and 2 percent surplus. Subsoil moisture supply rated 23 percent very short, 37 percent short, 39 percent adequate, and 1 percent surplus. Corn mature was 73 percent, compared to the 5-year average of 77 percent. Corn harvested was 19 percent, compared to the 5-year average of 30 percent. Corn condition rated 9 percent very poor, 16 percent poor, 27 percent fair, 42 percent good and 6 percent excellent. Soybeans dropping leaves was 45 percent, compared to the 5-year average of 35 percent. Soybeans dropping leaves was 45 percent, compared to the 5-year average of 35 percent. Soybeans harvested was 3 percent, compared to the 5-year average of 4 percent. Soybeans condition rated 5 percent very poor, 12 percent poor, 36 percent fair, 40 percent good and 7 percent excellent. Cotton bolls opening was 66 percent, compared to the 5-year average of 76 percent. Cotton harvested was 2 percent, compared to the 5-year average of 5 percent. Cotton condition rated 9 percent very poor, 9 percent poor, 30 percent fair and 52 percent good. Rice harvested was 35 percent compared to the 5-year average of 43 percent. Rice condition rated 3 percent very poor, 5 percent poor, 34 percent fair, 46 percent good and 12 percent excellent.

Days Suitable for Fieldwork and Soil Moisture Supply: Week Ending September 25, 2022

State	Days Suitable for Fieldwork	Topsoil Moisture Supply				Subsoil Moisture Supply			
		Very Short	Short	Adequate	Surplus	Very Short	Short	Adequate	Surplus
Missouri	6.3	(percent) 23	(percent) 40	(percent) 35	(percent) 2	(percent) 23	(percent) 37	(percent) 39	(percent) 1

Crop Progress – Missouri

Item	Week ending			2017-2021 Average
	September 25, 2022	September 18, 2022	September 25, 2021	
	(percent)	(percent)	(percent)	(percent)
Corn mature	73	64	84	77
Corn harvested	19	11	32	30
Soybeans dropping leaves	45	27	47	35
Soybeans harvested	3	(NA)	4	4
Cotton bolls opening	66	55	68	76
Cotton harvested	2	(NA)	(NA)	5
Rice harvested	35	15	36	43

(NA) Not available.

Corn Condition – Missouri

Date	Very Poor	Poor	Fair	Good	Excellent
	(percent)	(percent)	(percent)	(percent)	(percent)
September 25, 2022	9	16	27	42	6
September 18, 2022	9	15	26	42	8
September 25, 2021	2	7	24	54	13

Soybeans Condition – Missouri

Date	Very Poor	Poor	Fair	Good	Excellent
	(percent)	(percent)	(percent)	(percent)	(percent)
September 25, 2022	5	12	36	40	7
September 18, 2022	6	11	35	39	9
September 25, 2021	2	6	28	56	8

Cotton Condition – Missouri

Date	Very Poor	Poor	Fair	Good	Excellent
	(percent)	(percent)	(percent)	(percent)	(percent)
September 25, 2022	9	9	30	52	-
September 18, 2022	9	9	30	52	-
September 25, 2021	-	5	26	69	-

- Represents zero.

Rice Condition – Missouri

Date	Very Poor	Poor	Fair	Good	Excellent
	(percent)	(percent)	(percent)	(percent)	(percent)
September 25, 2022	3	5	34	46	12
September 18, 2022	3	5	34	46	12
September 25, 2021	-	2	28	56	14

- Represents zero.

Pasture Condition – Missouri

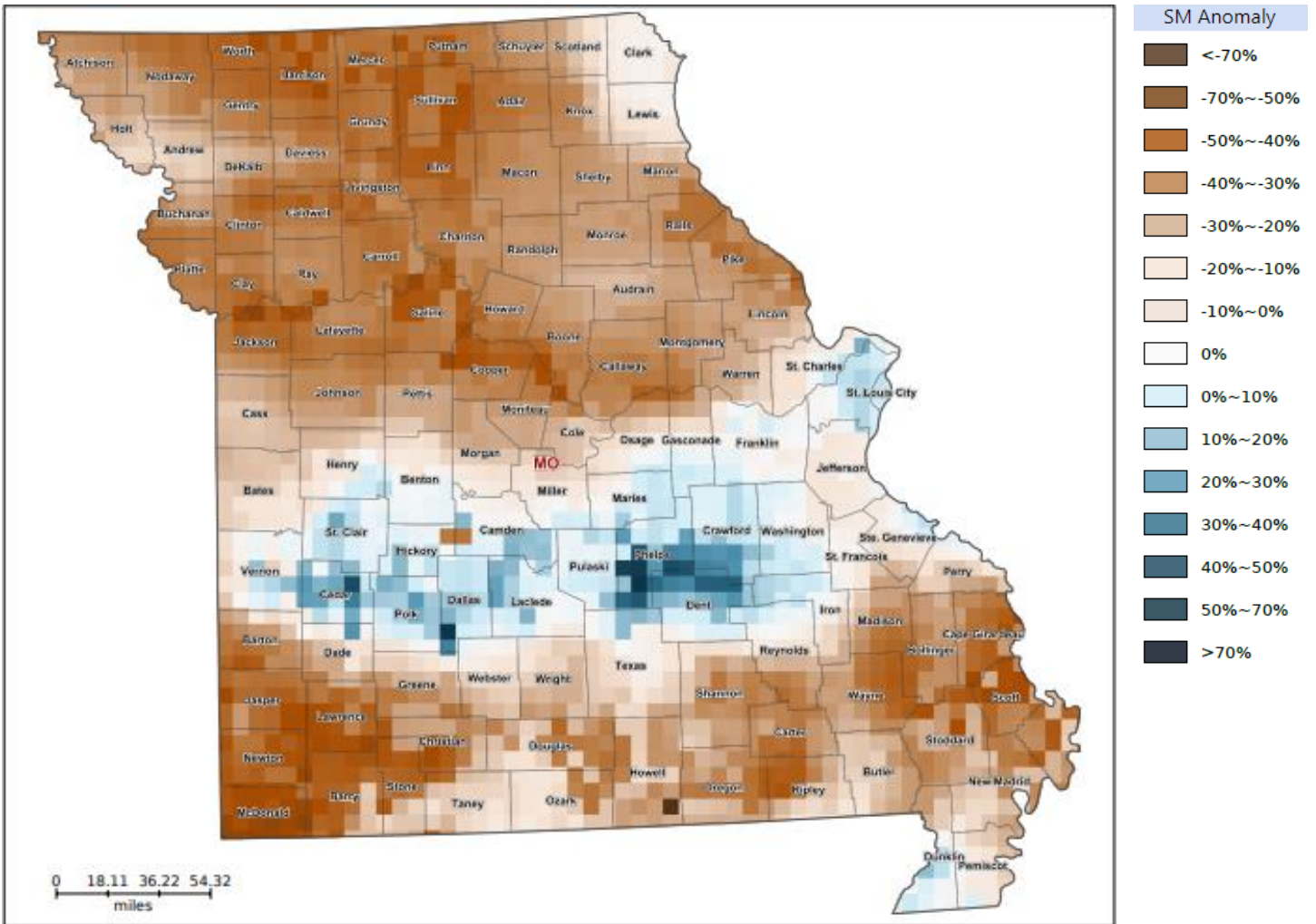
Date	Very Poor	Poor	Fair	Good	Excellent
	(percent)	(percent)	(percent)	(percent)	(percent)
September 25, 2022	16	20	35	28	1
September 18, 2022	16	20	34	29	1
September 25, 2021	4	12	41	40	3

Supply of Hay and Other Roughages and Stock Water Supply: September 25, 2022

State	Supply of Hay and Other Roughages				Stock Water Supply			
	Very Short	Short	Adequate	Surplus	Very Short	Short	Adequate	Surplus
	(percent)	(percent)	(percent)	(percent)	(percent)	(percent)	(percent)	(percent)
Missouri	10	29	61	-	7	30	62	1

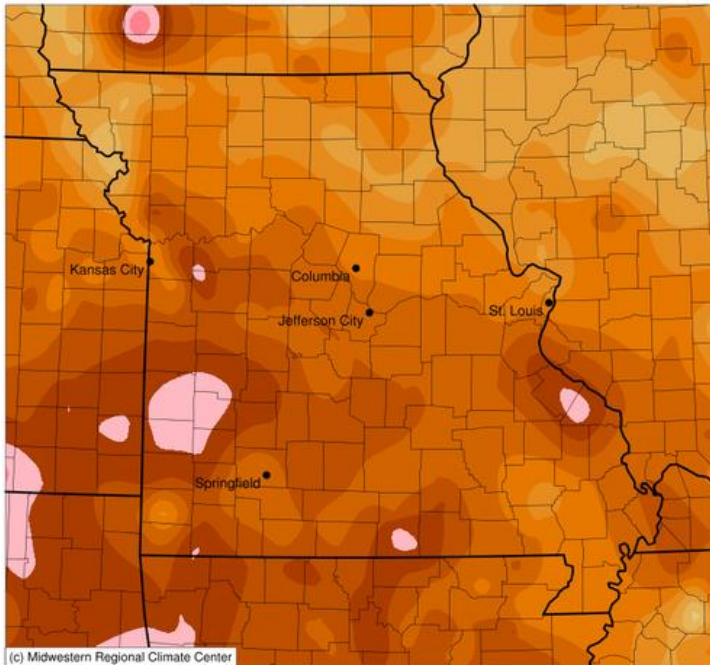
- Represents zero.

Soil Moisture Deviation from Historical Average – September 23



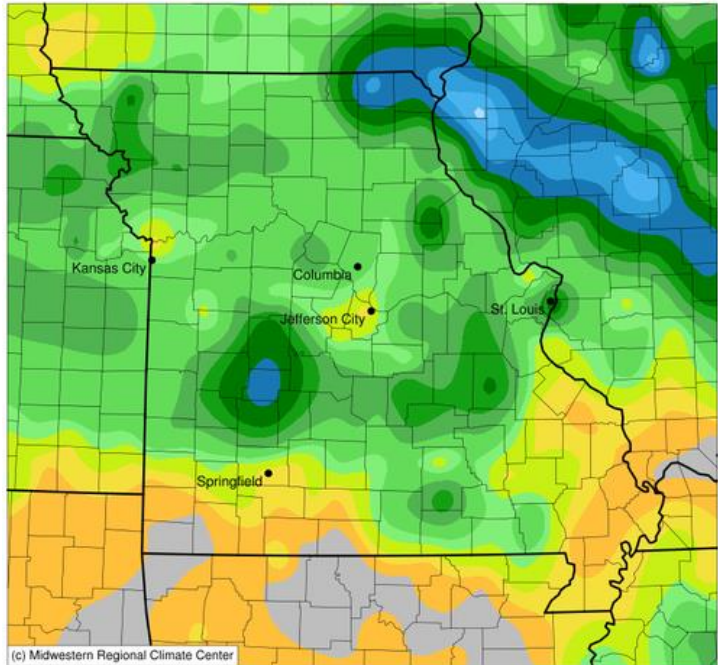
<https://cloud.csiss.gmu.edu/Crop-CASMA/>
(historical average includes 2015-2020)

Average Temperature (°F): Departure from 1991-2020 Normals
September 19, 2022 to September 25, 2022



0 5 10
Stations from the following networks used: WBAN, COOP, FAA, GHCN, ThreadEx, CoCoRaHS, WMO, ICAO, NWSLI, Missouri FSA, Missouri Mesonet, Midwest Regional Climate Center
cli-MATE: MRCC Application Tools Environment
Generated at: 9/26/2022 10:09:59 AM CDT

Accumulated Precipitation (in)
September 19, 2022 to September 25, 2022



0.01 0.05 0.1 0.2 0.3 0.5 0.75 1 1.5 2 2.5 3 4
Stations from the following networks used: WBAN, COOP, FAA, GHCN, ThreadEx, CoCoRaHS, WMO, ICAO, NWSLI, Missouri FSA, Missouri Mesonet, Midwest Regional Climate Center
cli-MATE: MRCC Application Tools Environment
Generated at: 9/26/2022 10:14:14 AM CDT

Access to NASS Reports

For your convenience, you may access NASS reports and products the following ways:

- All reports are available electronically, at no cost, on the NASS web site: <http://www.nass.usda.gov>
- Both national and state specific reports are available via a free e-mail subscription. To set-up this free subscription, visit <http://www.nass.usda.gov> and in the “Follow NASS” box under “Receive reports by Email,” click on “National” or “State” to select the reports you would like to receive.
- Follow us on Twitter @usda_nass

For more information on NASS surveys and reports, call the Heartland Regional Field Office at (314) 595-9594 or e-mail: nassrfohlr@usda.gov.