



Missouri Crop Progress and Condition

Released October 3, 2022

There were 6.9 days suitable for fieldwork during the week ending October 2, 2022. Temperatures last week averaged 59.0 degrees, 4.2 degrees below normal. Precipitation averaged 0.00 inches, 0.75 inches below normal. Topsoil moisture supply rated 31 percent very short, 39 percent short, and 30 percent adequate. Subsoil moisture supply rated 25 percent very short, 42 percent short, and 33 percent adequate. Corn mature was 82 percent, compared to the 5-year average of 87 percent. Corn harvested was 34 percent, compared to the 5-year average of 44 percent. Corn condition rated 10 percent very poor, 14 percent poor, 26 percent fair, 44 percent good, and 6 percent excellent. Soybeans dropping leaves was 68 percent, compared to the 5-year average of 52 percent. Soybeans harvested was 9 percent, even with the 5-year average. Soybeans condition rated 7 percent very poor, 11 percent poor, 33 percent fair, 44 percent good, and 5 percent excellent. Cotton bolls opening was 83 percent, compared to the 5-year average of 87 percent. Cotton harvested was 6 percent, compared to the 5-year average of 12 percent. Cotton condition rated 6 percent very poor, 6 percent poor, 32 percent fair, and 56 percent good. Rice harvested was 56 percent compared to the 5-year average of 60 percent. Rice condition rated 3 percent very poor, 5 percent poor, 31 percent fair, 49 percent good, and 12 percent excellent. Winter wheat planted was 3 percent, compared to the 5-year average of 7 percent.

Days Suitable for Fieldwork and Soil Moisture Supply: Week Ending October 2, 2022

State	Days Suitable for Fieldwork	Topsoil Moisture Supply				Subsoil Moisture Supply			
		Very Short	Short	Adequate	Surplus	Very Short	Short	Adequate	Surplus
Missouri	6.9	(percent)	(percent)	(percent)	(percent)	(percent)	(percent)	(percent)	(percent)
		31	39	30	-	25	42	33	-

- Represents zero.

Crop Progress – Missouri

Item	Week ending			2017-2021 Average
	October 2, 2022	September 25, 2022	October 2, 2021	
	(percent)	(percent)	(percent)	(percent)
Corn mature	82	73	93	87
Corn harvested	34	19	49	44
Soybeans dropping leaves	68	45	65	52
Soybeans harvested	9	3	10	9
Cotton bolls opening	83	66	79	87
Cotton harvested	6	2	2	12
Rice harvested	56	35	52	60
Winter wheat planted	3	(NA)	5	7

(NA) Not available.

Corn Condition – Missouri

Date	Very Poor	Poor	Fair	Good	Excellent
	(percent)	(percent)	(percent)	(percent)	(percent)
October 2, 2022	10	14	26	44	6
September 25, 2022	9	16	27	42	6
October 2, 2021	2	7	26	54	11

Soybeans Condition – Missouri

Date	Very Poor	Poor	Fair	Good	Excellent
	(percent)	(percent)	(percent)	(percent)	(percent)
October 2, 2022	7	11	33	44	5
September 25, 2022	5	12	36	40	7
October 2, 2021	2	7	28	55	8

Cotton Condition – Missouri

Date	Very Poor	Poor	Fair	Good	Excellent
	(percent)	(percent)	(percent)	(percent)	(percent)
October 2, 2022	6	6	32	56	-
September 25, 2022	9	9	30	52	-
October 2, 2021	-	7	28	65	-

- Represents zero.

Rice Condition – Missouri

Date	Very Poor	Poor	Fair	Good	Excellent
	(percent)	(percent)	(percent)	(percent)	(percent)
October 2, 2022	3	5	31	49	12
September 25, 2022	3	5	34	46	12
October 2, 2021	-	2	31	51	16

- Represents zero.

Pasture Condition – Missouri

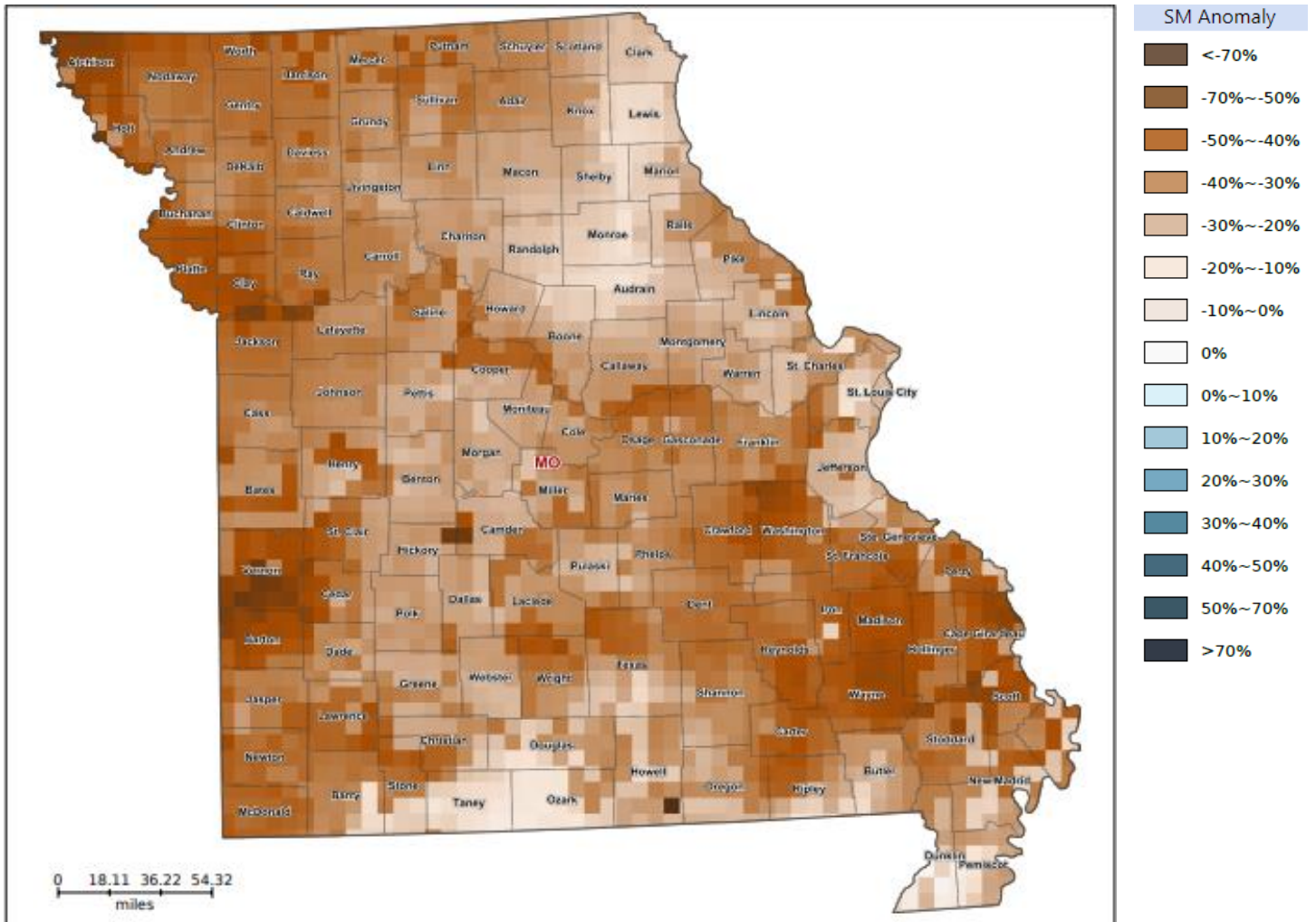
Date	Very Poor	Poor	Fair	Good	Excellent
	(percent)	(percent)	(percent)	(percent)	(percent)
October 2, 2022	17	30	26	26	1
September 25, 2022	16	20	35	28	1
October 2, 2021	4	10	45	40	1

Supply of Hay and Other Roughages and Stock Water Supply: October 2, 2022

State	Supply of Hay and Other Roughages				Stock Water Supply			
	Very Short	Short	Adequate	Surplus	Very Short	Short	Adequate	Surplus
	(percent)	(percent)	(percent)	(percent)	(percent)	(percent)	(percent)	(percent)
Missouri	11	33	56	-	9	36	55	-

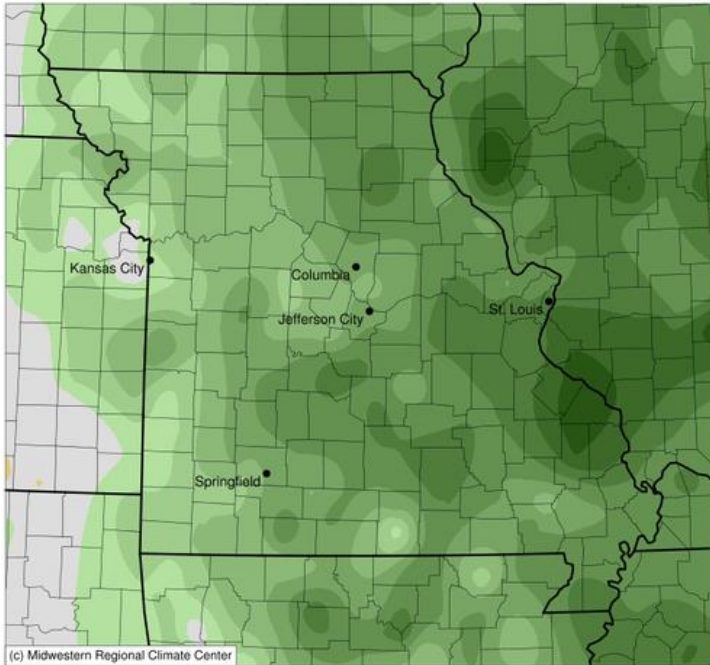
- Represents zero.

Soil Moisture Deviation from Historical Average – September 30



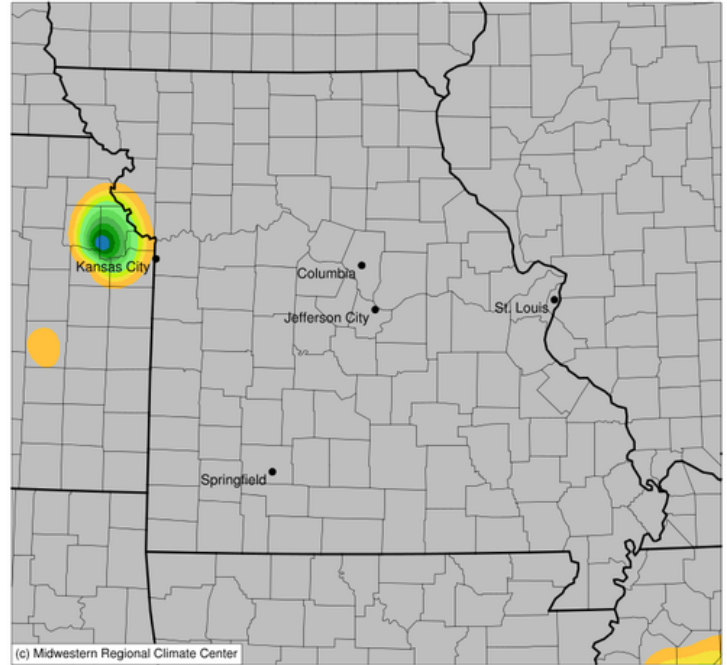
<https://cloud.csiss.gmu.edu/Crop-CASMA/>
(historical average includes 2015-2020)

Average Temperature (°F): Departure from 1991-2020 Normals
September 26, 2022 to October 02, 2022



(c) Midwestern Regional Climate Center
Stations from the following networks used: WBAN, COOP, FAA, GHCN, ThreadEx, CoCoRaHS, WMO, ICAO, NWSLI, Missouri FSA, Missouri Mesonet, Midwestern Regional Climate Center
cli-MATE: MRCC Application Tools Environment
Generated at: 10/3/2022 10:04:53 AM CDT

Accumulated Precipitation (in)
September 26, 2022 to October 02, 2022



(c) Midwestern Regional Climate Center
Stations from the following networks used: WBAN, COOP, FAA, GHCN, ThreadEx, CoCoRaHS, WMO, ICAO, NWSLI, Missouri FSA, Missouri Mesonet, Midwestern Regional Climate Center
cli-MATE: MRCC Application Tools Environment
Generated at: 10/3/2022 10:08:54 AM CDT

Access to NASS Reports

For your convenience, you may access NASS reports and products the following ways:

- All reports are available electronically, at no cost, on the NASS web site: <http://www.nass.usda.gov>
- Both national and state specific reports are available via a free e-mail subscription. To set-up this free subscription, visit <http://www.nass.usda.gov> and in the “Follow NASS” box under “Receive reports by Email,” click on “National” or “State” to select the reports you would like to receive.
- Follow us on Twitter @usda_nass

For more information on NASS surveys and reports, call the Heartland Regional Field Office at (314) 595-9594 or e-mail: nassrfohler@usda.gov.