



# Nebraska Weather and Crops

100 Centennial Mall North, Room 298, Lincoln, Nebraska 68508  
(402) 437-5541 · (402) 437-5547 FAX · [www.nass.usda.gov](http://www.nass.usda.gov)



Issue NE-CW3207

Released August 6, 2007

**Agricultural Summary:** For the week ending August 5, 2007, rains across the southeast and parts of south central Nebraska slowed irrigation and benefited dryland corn and soybeans, according to USDA's National Agricultural Statistics Service, Nebraska Field Office. Rains fell across the southern Panhandle, but left the north dry.

**Weather Summary:** Temperatures averaged 1 degree above normal across the state. The Southeast District saw the most precipitation, averaging over two inches. Much of the north central and northeast remained dry. The Northeast is now the second district to fall below normal precipitation since April 1. The Northwest District is the other at 22 percent below normal.

### Soil Moisture and Days Suitable For Fieldwork: Nebraska, Week Ending August 5, 2007

	This Week	Last Week	Last Year	Average
<i>Percent</i>				
<b>Topsoil</b>				
Very Short	10	11	42	37
Short	31	34	36	32
Adequate	55	51	22	30
Surplus	4	4	0	1
<b>Subsoil</b>				
Very Short	13	12	53	42
Short	30	36	36	31
Adequate	56	51	11	27
Surplus	1	1	0	0
<b>Days Suitable</b>	5.1	6.0	5.9	6.3

**Field Crops Report:** Corn conditions rated 1 percent very poor, 4 poor, 19 fair, 48 good, and 28 excellent, well above last year's 54 percent good or excellent rating. Irrigated fields rated 87 percent good or excellent while dryland fields rated 59, both above year ago levels. Corn silked was 97 percent, behind last year's 98 but ahead of the 96 average. Corn in the dough stage was 47 percent, behind last year's 52 but ahead of the 40 average. Corn in the dent stage was 6 percent, behind last year's 7 but ahead of the 5 average.

Soybean conditions rated 1 percent very poor, 4 poor, 24 fair, 52 good, and 19 excellent, well above last year's 38 percent good or excellent condition. Soybeans blooming were 93 percent, near last year and average. Soybeans setting pods were 61 percent, behind last year's 79 and 64 average.

Alfalfa conditions rated 7 percent very poor, 12 poor, 23 fair, 46 good, and 12 excellent, well above last year's 23 percent good or excellent condition. Third cutting was 43 percent complete, ahead of last year's 41 and 37 average.

Wild hay conditions rated 4 percent very poor, 4 poor, 21 fair, 58 good, and 13 excellent, well above last year's 19 percent good or excellent condition.

Oats harvested was 94 percent, near last year's 95 and even with average.

Sorghum conditions rated 1 percent very poor, 1 poor, 16 fair, 65 good, and 17 excellent, well above last year's 45 percent good or excellent condition. Sorghum headed was 54 percent, behind last year's 72 and 55 average.

Dry bean conditions rated 1 percent very poor, 5 poor, 23 fair, 59 good, and 12 excellent, above last year's 64 percent good or excellent condition. Dry beans blooming were 79 percent, behind last year's 98 and 82 average. Dry beans setting pods were 32 percent, well behind last year's 66 and 48 average.

### Crop Progress: Nebraska, Week Ending August 5, 2007

Crop	This Week	Last Week	Last Year	Average
<i>Percent</i>				
Alfalfa 3 <sup>rd</sup> Cutting	43	15	41	37
Corn Silked	97	92	98	96
Corn Dough	47	31	52	40
Corn Dent	6	2	7	5
Dry Beans Blooming	79	65	98	82
Dry Beans Setting Pods	32	11	66	48
Oats Harvested	94	88	95	94
Sorghum Headed	54	27	72	55
Soybeans Blooming	93	82	94	94
Soybeans Setting Pods	61	46	79	64

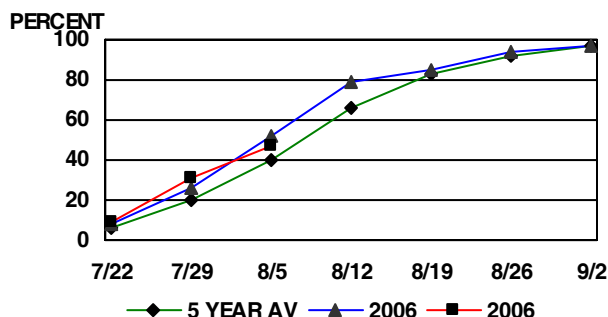
### Crop Condition: Nebraska, Week Ending August 5, 2007

Crop	Very Poor	Poor	Fair	Good	Excellent
<i>Percent</i>					
Alfalfa	7	12	23	46	12
Corn	1	4	19	48	28
Dry Beans	1	5	23	59	12
Sorghum	1	1	16	65	17
Soybeans	1	4	24	52	19
Wild Hay	4	4	21	58	13

**Livestock, Pasture and Range Report:** Pasture and range conditions rated 6 percent very poor, 12 poor, 25 fair, 48 good, and 9 excellent, well above last year's 6 percent good or excellent condition.

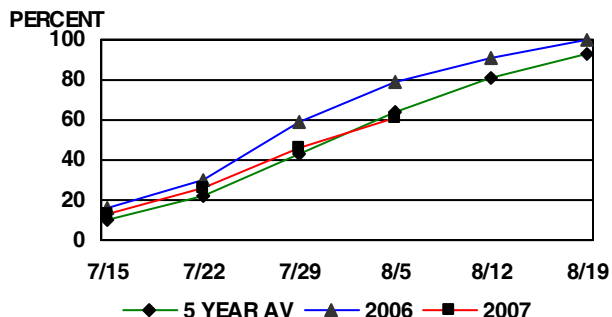
*This release is based on data from FSA county directors, county extension educators, NOAA, and the High Plains Regional Climate Center. County comments and reports can be found at: [http://www.nass.usda.gov/Statistics\\_by\\_State/Nebraska/Publications/Crop\\_Progress\\_&\\_Condition/cmts\\_cur.htm](http://www.nass.usda.gov/Statistics_by_State/Nebraska/Publications/Crop_Progress_&_Condition/cmts_cur.htm)*

CORN DOUGH



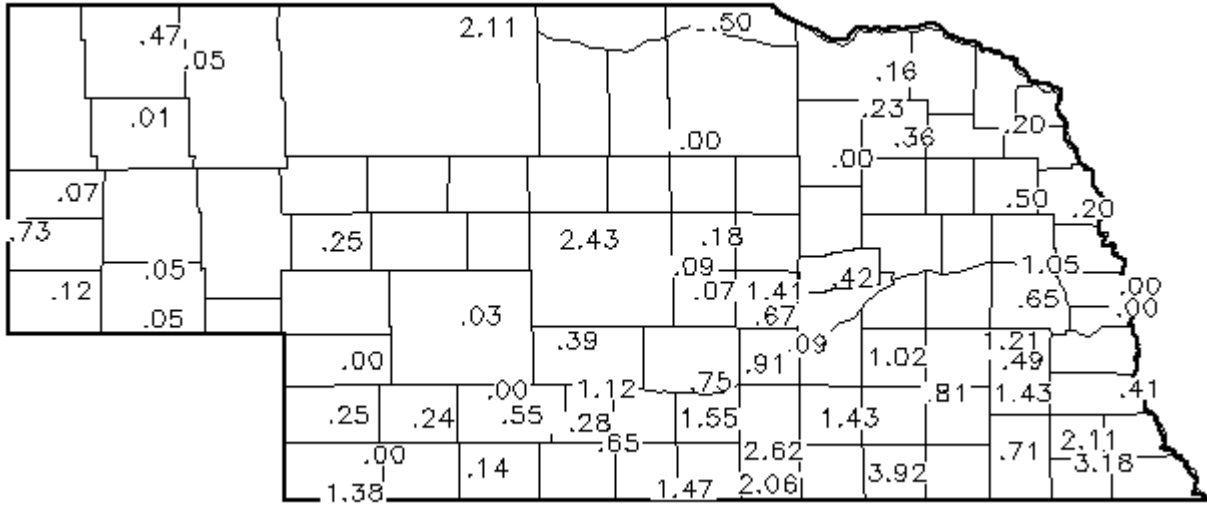
PROGRESS AS OF SUNDAY

SOYBEANS SETTING PODS



PROGRESS AS OF SUNDAY

**Precipitation in Inches for Week Ending 8:00 a.m. August 5, 2007**



**Precipitation: By District, Nebraska, April 1 – August 5, 2007**

Item	NW	NC	NE	CEN	EC	SW	SC	SE
Total past week	.20	.60	.33	.72	.82	.25	1.00	2.24
Total since April 1	8.21	14.36	14.46	21.54	17.03	16.16	19.45	18.12
Normal since April 1	10.27	12.41	14.54	13.58	14.84	12.25	13.31	15.26
Total as % of normal	78%	116%	99%	159%	114%	131%	145%	119%

**Temperature and Growing Degree Days: By Location, Nebraska,  
Week Ending Sunday, August 5, 2007**

Station	Temperature				Growing Degree Days Since April 15			
	Extremes		Average	Departure	Last Week	Current	Normal	
	High	Low						
NW	Alliance	98	59	76	+3	166	1788	1736
	Scottsbluff	97	60	77	+4	170	1941	1729
	Sidney	96	58	75	+2	163	1778	1789
NC	Ainsworth	96	60	76	+1	173	1943	1952
	Arthur	93	59	75	+1	186	1792	1909
	O'Neill	91	61	76	+1	173	1995	1980
NE	Concord	91	60	75	-1	169	2083	2040
	Elgin	93	63	76	0	178	2048	2013
	West Point	91	60	76	-1	175	2139	2123
C	Grand Island	92	65	77	+2	187	2111	1982
	Lexington	92	64	76	+1	179	1993	1949
	Ord	92	64	77	+2	184	2044	1977
EC	Central City	90	63	76	+1	181	2140	2018
	Lincoln	95	65	80	+2	197	2336	2176
	Mead	95	58	77	-1	181	2206	2173
SW	Champion	95	62	77	+2	182	1879	1914
	Dickens	96	60	76	+1	172	1889	1930
	McCook	96	65	78	+3	184	2099	1940
SC	Minden	90	68	76	+1	181	2074	1961
	Red Cloud	93	68	78	+2	190	2164	2002
	Smithfield	91	65	76	+1	178	1999	1953
SE	Beatrice	92	66	78	+1	190	2211	2176
	Clay Center	91	65	76	+1	181	2055	2002
	Nemaha	94	67	79	+2	194	2374	2180

Source: High Plains Regional Climate Center and Nebraska State Climate Office