



# Nebraska Weather and Crops

100 Centennial Mall North, Room 298, Lincoln, Nebraska 68508  
(402) 437-5541 · (402) 437-5547 FAX · [www.nass.usda.gov](http://www.nass.usda.gov)



Issue NE-CW 2208

Released June 2, 2008

**Agricultural Summary:** For the week ending June 1, 2008, strong winds combined with heavy rains, flooding and unseasonably cool temperatures slowed planting and increased the potential need to replant some crops, according to USDA's National Agricultural Statistics Service, Nebraska Field Office. Severe weather with tornados touching down in parts of central and east central Nebraska caused flooding and damage to crops as well as roads. Rains across much of the state left fields too wet to plant, slowed development, and made haying difficult.

**Weather Summary:** Temperatures averaged 4 degrees below normal and ranged from highs in the upper 80's in the southwest to lows in the upper 30's in the Panhandle. The Northeast, Central, and East Central Districts averaged over 2 inches of precipitation.

**Soil Moisture and Days Suitable:  
Nebraska, Week Ending June 1, 2008**

	This Week	Last Week	Last Year	Average
<i>Percent</i>				
<b>Topsoil</b>				
Very Short	4	0	4	13
Short	5	5	12	20
Adequate	68	72	73	62
Surplus	23	23	11	5
<b>Subsoil</b>				
Very Short	7	3	7	18
Short	10	11	14	28
Adequate	70	76	76	53
Surplus	13	10	3	1
<b>Days Suitable</b>	2.4	3.9	3.7	5.1

**Field Crops Report:** Corn conditions rated 1 percent very poor, 6 poor, 27 fair, 56 good, and 10 excellent, below last year's 84 percent good or excellent rating. Corn emerged was 82 percent, behind last year's 91 and five days behind the 92 average.

Soybeans planted were at 73 percent complete, behind last year's 84 and six days behind the 88 average. Soybeans emerged was 37 percent, behind last year's 52 and four days behind the 56 average.

Wheat conditions rated 1 percent very poor, 5 poor, 30 fair, 55 good, and 9 excellent, above last year's 57 percent good or excellent condition. Wheat headed is 39 percent complete, well behind last year's 86 and nine days behind the 78 average.

Alfalfa conditions rated 2 percent poor, 24 fair, 65 good, and 9 excellent, well above last year's 58 percent good or

excellent condition. First cutting was 13 percent complete, well behind last year's 30 and 44 average.

Oat conditions rated 1 percent poor, 14 fair, 78 good, and 7 excellent, above last year's 71 percent good or excellent condition. Oats headed was 9 percent, behind last year's 20 and 22 average.

Sorghum planted was 47 percent complete, behind last year's 69, and six days behind the 68 average. Sorghum emerged was 11 percent, behind last year's 35 and eight days behind the 29 average.

Dry bean planting was 16 percent complete, behind last year's 39 and the five-year average of 32. Dry beans emerged were at 1 percent, behind last year's 3 and 4 average.

Proso millet planted was at 1 percent, behind last year's 11 and the 13 average.

**Crop Progress: Nebraska, Week Ending June 1, 2008**

Crop	This Week	Last Week	Last Year	Average
<i>Percent</i>				
Alfalfa 1 <sup>st</sup> Cutting	13	6	30	44
Corn Emerged	82	59	91	92
Dry Beans Planted	16	7	39	32
Dry Beans Emerged	1		3	4
Oats Headed	9	1	20	22
Proso Millet Planted	1		11	13
Sorghum Planted	47	34	69	68
Sorghum Emerged	11	2	35	29
Soybeans Planted	73	62	84	88
Soybeans Emerged	37	11	52	56
Wheat Headed	39	11	86	78

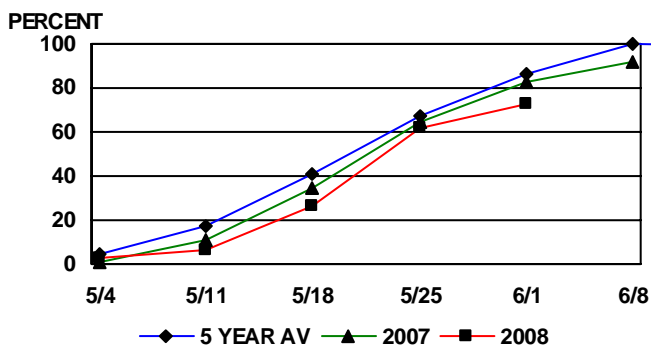
**Crop Condition: Nebraska, Week Ending June 1, 2008**

Crop	Very Poor	Poor	Fair	Good	Excellent
<i>Percent</i>					
Alfalfa	0	2	24	65	9
Corn	1	6	27	56	10
Oats	0	1	14	78	7
Wheat	1	5	30	55	9

**Livestock, Pasture and Range Report:** Pasture and range conditions rated 6 percent poor, 22 fair, 60 good, and 12 excellent, well above last year's 65 percent good or excellent condition. Pasture growth continues to be slower than normal in some areas.

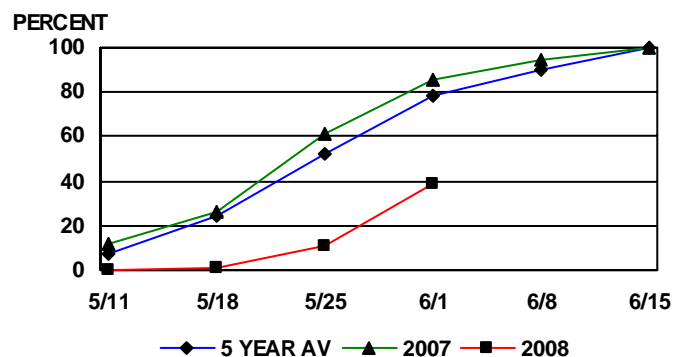
*This release is based on data from FSA county directors, county extension educators, NOAA, and the High Plains Regional Climate Center. County comments and reports can be found at: [http://www.nass.usda.gov/Statistics\\_by\\_State/Nebraska/Publications/Crop\\_Progress\\_&\\_Condition/cmts\\_cur.htm](http://www.nass.usda.gov/Statistics_by_State/Nebraska/Publications/Crop_Progress_&_Condition/cmts_cur.htm)*

**SOYBEANS PLANTED**



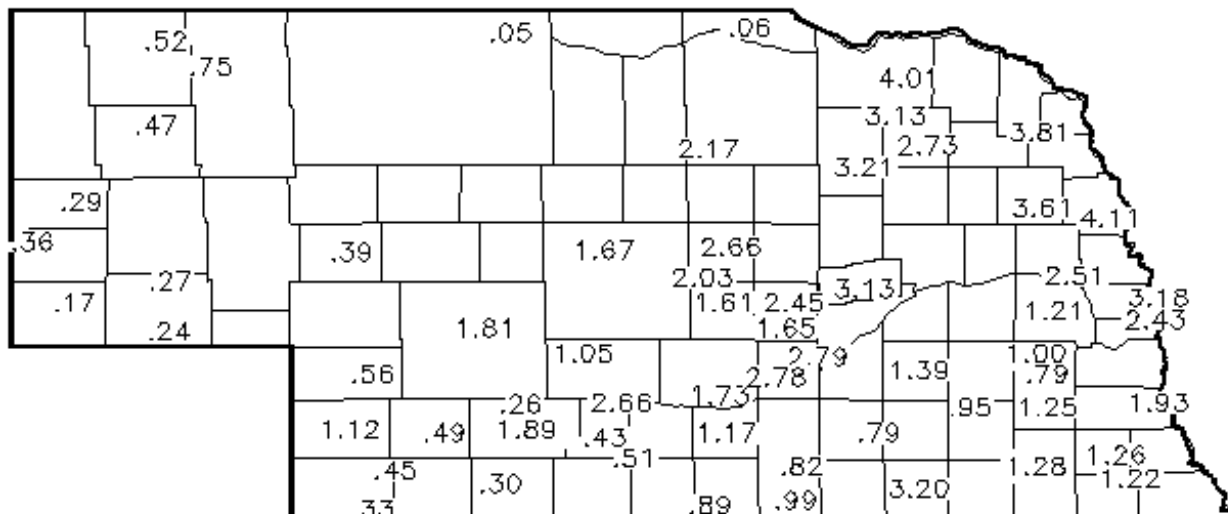
PROGRESS AS OF SUNDAY

**WHEAT HEADED**



PROGRESS AS OF SUNDAY

Precipitation in Inches for Week Ending 8:00 a.m. June 1, 2008



Precipitation: By District, Nebraska, April 1 – June 1, 2008

Item	NW	NC	NE	CEN	EC	SW	SC	SE
Total past week	.31	1.77	3.37	2.00	2.23	.73	.67	1.49
Total since April 1	3.88	8.61	10.64	11.67	10.59	9.65	9.85	10.73
Normal since April 1	4.87	5.41	6.66	6.31	6.98	5.38	6.02	7.01
Total as % of normal	78%	157%	160%	185%	151%	177%	163%	153%

Temperature and Growing Degree Days: By Location, Nebraska, Week Ending Sunday, June 1, 2008

Station	Temperature				Growing Degree Days Since April 15		
	Extremes		Average	Departure	Last Week	Current	Normal
	High	Low					
NW Alliance	79	37	54	-8	79	410	450
Scottsbluff	83	39	58	-4	74	464	450
Sidney	83	38	57	-6	70	436	460
NC Ainsworth	80	38	57	-8	67	380	501
Arthur	82	39	57	-8	66	403	492
O'Neill	82	41	59	-7	73	391	509
NE Concord	84	44	61	-6	80	409	524
Elgin	82	42	60	-7	76	402	519
West Point	86	46	63	-5	91	461	550
C Grand Island	84	45	64	-2	101	485	512
Lexington	84	43	62	-3	93	472	504
Ord	84	43	61	-5	85	452	510
EC Central City	85	44	63	-3	95	481	521
Lincoln	86	48	67	-2	118	525	567
Mead	86	46	65	-3	110	515	567
SW Champion	84	42	60	-5	80	488	498
Dickens	85	41	60	-5	82	467	499
McCook	89	44	63	-3	93	525	502
SC Minden	83	44	64	-2	101	485	507
Red Cloud	85	47	66	0	113	514	518
Smithfield	84	43	63	-3	94	458	505
SE Beatrice	85	50	67	-1	121	518	567
Clay Center	84	46	64	-2	104	475	517
Nemaha	88	48	69	0	129	581	575

Source: High Plains Regional Climate Center and Nebraska State Climate Office