



# Nebraska Weather and Crops

100 Centennial Mall North, Room 298, Lincoln, Nebraska 68508  
(402) 437-5541 · (402) 437-5547 FAX · [www.nass.usda.gov](http://www.nass.usda.gov)



Issue NE-CW 2308

Released June 9, 2008

**Agricultural Summary:** For the week ending June 8, 2008, strong winds, excess rain, and hail continued to impact crops and impede planting progress, according to USDA's National Agricultural Statistics Service, Nebraska Field Office. Strong winds damaged farmsteads and over turned pivots. Storms produced hail and heavy rains across much of Nebraska causing flooding and damage to crops as well as roads. Many producers are faced with the challenge of finishing planting, replanting damaged acres, and completing weed management programs in a short period of time. Hay producers have been frustrated with the lack of dry days.

**Weather Summary:** Temperatures ranged from highs in the lower 90's to lows near 40. The Panhandle, North Central, and Southwest districts averaged 4 degrees below normal while the rest of the state was at or above normal. The Central, East Central, and North Central Districts received the most rainfall averaging over three inches of precipitation; the entire state averaged over an inch of precipitation.

**Soil Moisture and Days Suitable:  
Nebraska, Week Ending June 8, 2008**

	This Week	Last Week	Last Year	Average
<i>Percent</i>				
<b>Topsoil</b>				
Very Short	1	4	2	14
Short	5	5	14	17
Adequate	67	68	77	65
Surplus	27	23	7	4
<b>Subsoil</b>				
Very Short	4	7	3	18
Short	11	10	17	26
Adequate	70	70	78	55
Surplus	15	13	2	1
<b>Days Suitable</b>	2.0	2.4	5.2	4.8

**Field Crops Report:** Corn conditions rated 2 percent very poor, 6 poor, 27 fair, 56 good, and 9 excellent, well below last year's 75 percent good or excellent rating. Corn emerged was 95 percent, behind last year and average of 98.

Soybean conditions rated 1 percent very poor, 4 poor, 29 fair, 59 good, and 7 excellent, well below last year's 79 percent good or excellent condition. Soybeans planted were at 82 percent complete, behind last year's 94 and the 96 average. Soybeans emerged was 59 percent, behind last year's 73 and five days behind the 79 average.

Wheat conditions rated 2 percent very poor, 7 poor, 32 fair, 47 good, and 12 excellent, well above last year's 40 percent good or excellent condition. Wheat headed jumped to 81 percent complete, behind last year's 95 and five days behind the 90 average.

Alfalfa conditions rated 0 percent very poor, 3 poor, 23 fair, 62 good, and 12 excellent, well above last year's 63 percent

good or excellent condition. First cutting was 18 percent complete, well behind last year's 57 and two weeks behind the 65 average. Hay quality was expected to be lower due to continued wet conditions.

Oat conditions rated 0 percent very poor, 1 poor, 13 fair, 73 good, and 13 excellent, well above last year's 78 percent good or excellent condition. Oats headed was 28 percent, behind last year's 44 and 43 average.

Sorghum planted was 64 percent complete, behind last year's 77 and eight days behind the 83 average. Sorghum emerged was 36 percent, behind last year's 49 and the 53 average.

Dry bean planting was 36 percent complete, behind last year's 72 and a week behind the 63 average. Dry beans emerged were at 3 percent, behind last year's 25 and 18 average.

Proso millet planted was at 24 percent, behind last year's 33 and the 30 average.

**Crop Progress: Nebraska, Week Ending June 8, 2008**

Crop	This Week	Last Week	Last Year	Average
<i>Percent</i>				
Alfalfa 1 <sup>st</sup> Cutting	18	13	57	65
Corn Emerged	95	82	98	98
Dry Beans Planted	36	16	72	63
Dry Beans Emerged	3	1	25	18
Oats Headed	28	9	44	43
Proso Millet Planted	24	1	33	30
Sorghum Planted	64	47	77	83
Sorghum Emerged	36	11	49	53
Soybeans Planted	82	73	94	96
Soybeans Emerged	59	37	73	79
Wheat Headed	81	39	95	90

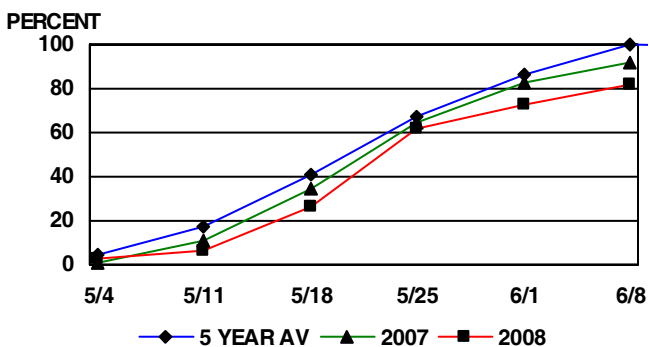
**Crop Condition: Nebraska, Week Ending June 8, 2008**

Crop	Very Poor	Poor	Fair	Good	Excellent
<i>Percent</i>					
Alfalfa	0	3	23	62	12
Corn	2	6	27	56	9
Oats	0	1	13	73	13
Soybeans	1	4	29	59	7
Wheat	2	7	32	47	12

**Livestock, Pasture and Range Report:** Pasture and range conditions rated 1 percent very poor, 5 poor, 21 fair, 58 good, and 15 excellent, well above last year's 49 percent good or excellent condition. Cattle in feedlots are belly deep in some cases and need drying conditions.

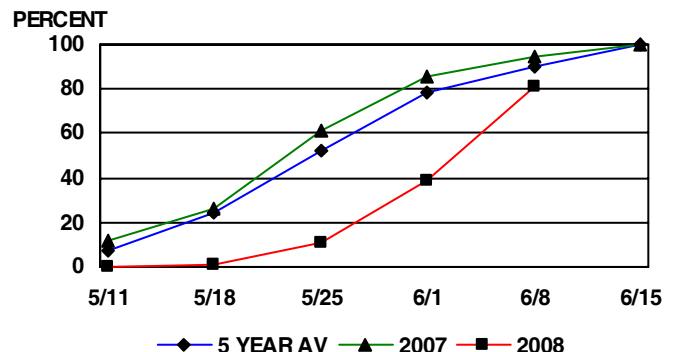
*This release is based on data from FSA county directors, county extension educators, NOAA, and the High Plains Regional Climate Center. County comments and reports can be found at: [http://www.nass.usda.gov/Statistics\\_by\\_State/Nebraska/Publications/Crop\\_Progress\\_&\\_Condition/cmts\\_cur.htm](http://www.nass.usda.gov/Statistics_by_State/Nebraska/Publications/Crop_Progress_&_Condition/cmts_cur.htm)*

**SOYBEANS PLANTED**



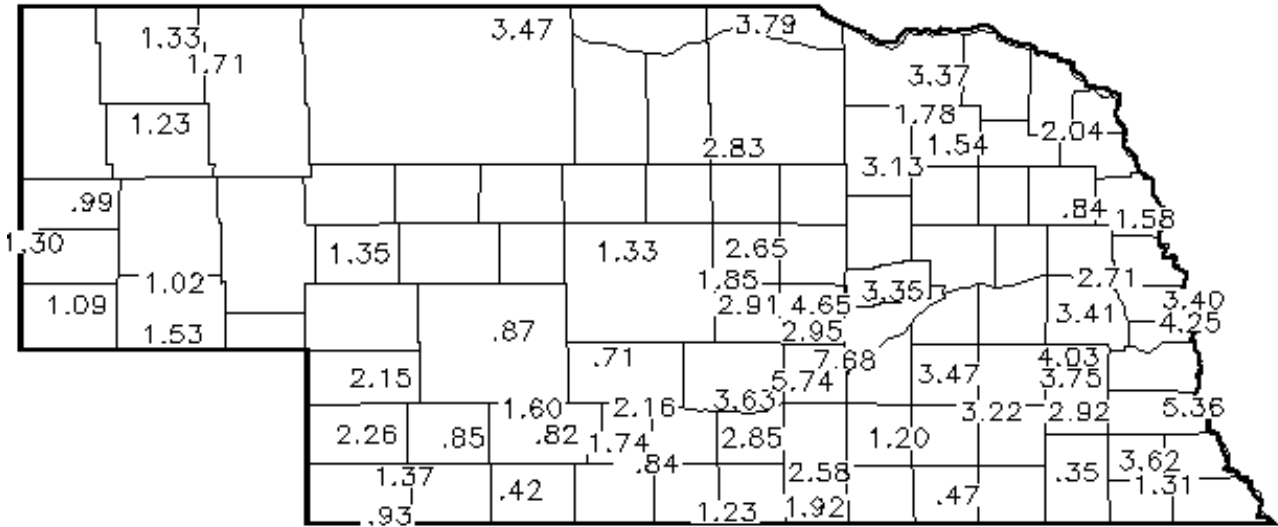
PROGRESS AS OF SUNDAY

**WHEAT HEADED**



PROGRESS AS OF SUNDAY

**Precipitation in Inches for Week Ending 8:00 a.m. June 8, 2008**



**Precipitation: By District, Nebraska, April 1 – June 8, 2008**

Item	NW	NC	NE	CEN	EC	SW	SC	SE
Total past week	1.09	3.12	2.02	3.36	3.54	1.37	1.44	1.78
Total since April 1	4.98	11.79	12.60	14.84	14.13	11.03	11.29	12.49
Normal since April 1	5.53	6.26	7.70	7.24	7.98	6.22	6.93	7.99
Total as % of normal	89%	187%	164%	204%	176%	175%	162%	155%

**Temperature and Growing Degree Days: By Location, Nebraska, Week Ending Sunday, June 8, 2008**

Station	Temperature				Growing Degree Days Since April 15			
	Extremes		Average	Departure	Last Week	Current	Normal	
	High	Low						
NW	Alliance	75	41	58	-7	41	451	551
	Scottsbluff	82	44	61	-4	84	548	549
	Sidney	79	42	60	-6	78	514	562
NC	Ainsworth	77	50	64	-4	96	476	622
	Arthur	79	44	61	-7	83	486	608
	O'Neill	79	53	67	-2	116	507	632
NE	Concord	82	55	69	-1	130	539	654
	Elgin	79	54	68	-1	126	528	645
	West Point	92	58	72	+2	152	613	687
C	Grand Island	84	55	70	+2	142	627	636
	Lexington	85	51	69	+1	131	603	625
	Ord	81	55	69	+1	131	583	632
EC	Central City	87	57	71	+2	147	628	648
	Lincoln	92	61	75	+4	168	693	709
	Mead	94	60	74	+3	161	676	708
SW	Champion	84	45	64	-4	99	587	616
	Dickens	84	46	65	-3	103	570	617
	McCook	86	48	69	+1	133	658	621
SC	Minden	85	53	70	+2	139	624	629
	Red Cloud	88	55	72	+3	152	666	643
	Smithfield	83	51	69	+1	131	589	626
SE	Beatrice	92	59	74	+3	162	680	709
	Clay Center	87	55	71	+3	148	623	643
	Nemaha	89	61	75	+4	174	755	716

Source: High Plains Regional Climate Center and Nebraska State Climate Office