



Nevada Crop Progress & Condition

Pacific Regional Office · 650 Capitol Mall, Suite 6-100 · Sacramento, CA 95814 · (916) 738-6600 · www.nass.usda.gov/nv

Week Ending April 14, 2024

Released April 15, 2024

Weather Summary

The average low temperatures for Nevada ranged from 14 degrees in Eureka to 54 degrees in Las Vegas. The average high temperatures ranged from 70 degrees in Ely to 88 degrees in Las Vegas. Precipitation for Nevada ranged from 0.09 inches in Tonopah, 0.11 inches in Reno, and 0.21 inches in Winnemucca.

Crops Summary

Days Suitable for Fieldwork: 5.9 days. Topsoil Moisture: 5% short, 60% adequate and 35% surplus. Subsoil Moisture: 80% adequate and 20% surplus. Pasture and Range Condition: 15% fair, 45% good, and 40% excellent. Warm mid-week temperatures led to good growth of emerged wheat and alfalfa fields. Ground preparations resumed, with spring wheat being planted in some areas. Hay fields greened up. Despite ample soil moisture, irrigation began in some parts of the state. Rangeland growth continued with good moisture and abundant sunlight. Late in the week cold temperatures and rain returned to the central portion of the state. Cattle were on or moving towards spring range.

Weather for the Week of 4/8/2024 through 4/14/2024

Station	Temperature				Precipitation ²
	High	Low	Average	Departure from Normal ¹	
	-- Degrees Fahrenheit --				
Reno	78	31	53	3	0.11
Elko	76	24	49	5	0.00
Ely	70	17	44	2	0.00
Winnemucca	77	23	50	5	0.21
Eureka	71	14	45	4	0.00
Tonopah	73	30	50	1	0.09
Las Vegas	88	54	68	2	0.00

¹ Normal periods 1990-2020 used in departure from normal calculations.

² Rain or melted snow/ice.

Data retrieved from NOAA and NWS. Calculated by USDA NASS. All rights reserved.

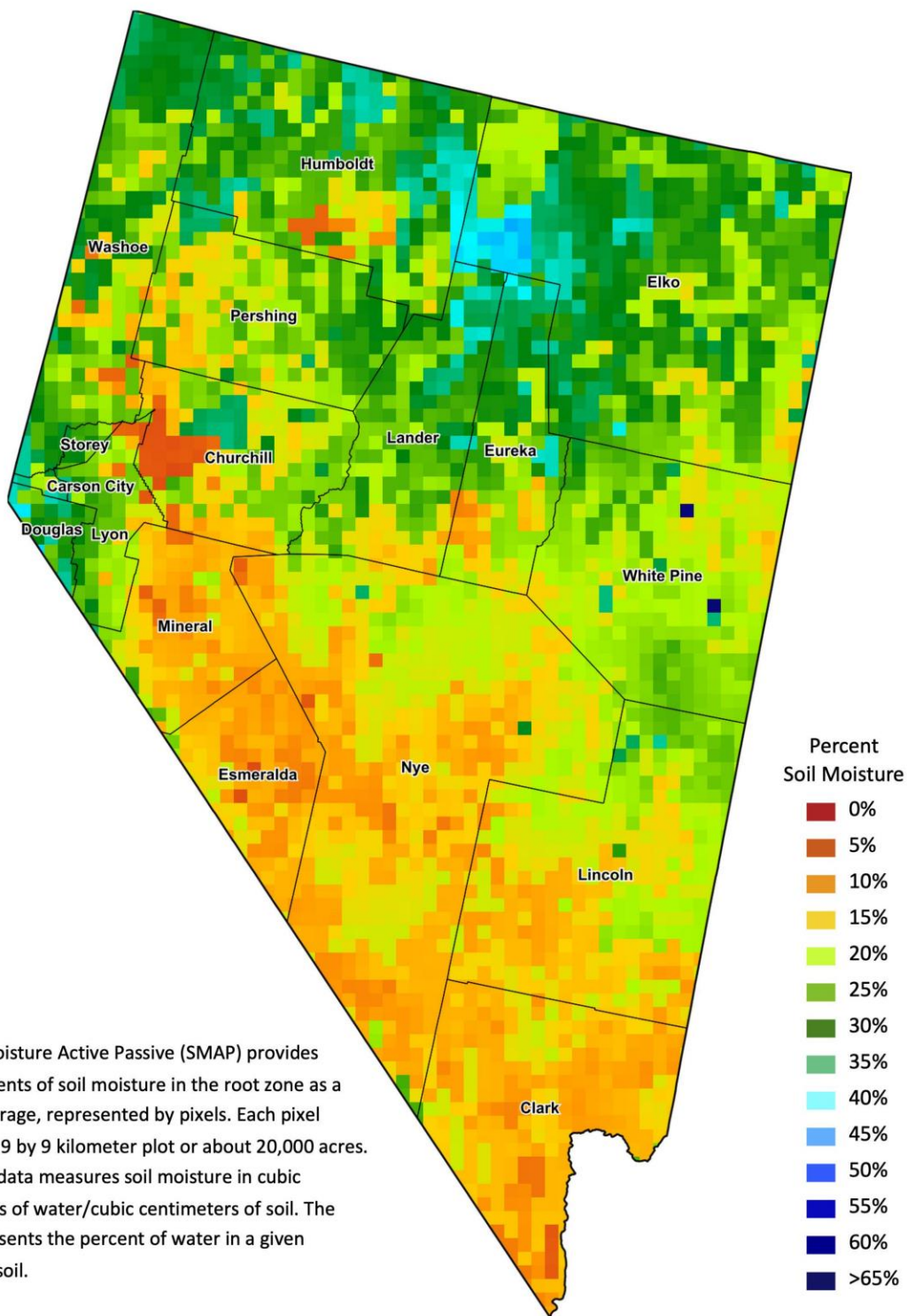
Drought Conditions from the U.S. Drought Monitor as of 4/9/2024

Time	Percent of Land in Drought Rating						Drought Severity (DSCI)
	None	D0	D1	D2	D3	D4	
Current	95.36	3.25	1.39	0.00	0.00	0.00	6
Last Week	85.33	13.28	1.39	0.00	0.00	0.00	16
3 Months Ago	94.37	4.02	1.60	0.00	0.00	0.00	7
One Year Ago	33.26	43.45	20.50	2.78	0.00	0.00	93

The U.S. Drought Monitor is jointly produced by the National Drought Mitigation Center at the University of Nebraska-Lincoln, the United States Department of Agriculture, and the National Oceanic and Atmospheric Administration.
droughtmonitor.unl.edu/CurrentMap/StateDroughtMonitor.aspx?NV



Nevada Soil Moisture Map for the Week of April 1 - 7, 2024



The Soil Moisture Active Passive (SMAP) provides measurements of soil moisture in the root zone as a weekly average, represented by pixels. Each pixel represents 9 by 9 kilometer plot or about 20,000 acres. The SMAP data measures soil moisture in cubic centimeters of water/cubic centimeters of soil. The scale represents the percent of water in a given volume of soil.