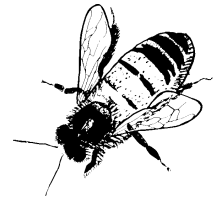


BEES & HONEY PRODUCTION

New England honey production, from producers with five or more colonies, totaled 953,000 pounds in 2000, down 4 percent from 1999. Vermont topped the New England states with 413,000 pounds produced, or 43 percent of the six-state total for production. A total of 26,000 honey producing colonies were reported in New England in 2000, with an average yield per colony of 37 pounds, unchanged from 1999. Maine contributed a significant 42 percent of New England's colonies.

Total value of production for New England in 2000 was \$1.1 million, similar to 1999's value. Massachusetts accounted for nearly 34 percent of New England's total value of honey production with \$365,000. For New England totals, colonies were not counted if honey was not harvested.



HONEY: ^{1/} Colonies, Yield, Production, Value and Stocks, 1991 - 2000

STATE & YEAR	Honey Producing Colonies	Yield per Colony	Production	Average price per pound	Value of Production	Stocks ^{2/} as of December 15
	1,000	Pounds	1,000 Pounds	Cents	1,000 Dollars	1,000 Pounds
Maine						
1991	13.0	42	546	69	377	213
1992	15.0	22	330	77	254	122
1993	13.0	50	650	68	442	215
1994	8.0	55	440	60	264	172
1995	11.0	45	495	97	480	223
1996	9.0	23	207	106	219	21
1997	8.0	19	152	70	106	9
1998	10.0	26	260	69	179	117
1999	14.0	22	308	83	256	89
2000	11.0	21	231	75	173	143
Massachusetts						
1991	8.0	12	96	4/	4/	37
1992	6.0	20	120	4/	4/	12
1993	6.0	41	246	4/	4/	165
1994	3.0	36	108	155	167	79
1995	5.0	29	145	192	278	65
1996	4.0	25	100	208	208	16
1997	2.0	66	132	187	247	67
1998	2.5	61	153	219	334	52
1999	3.5	35	123	205	251	56
2000	5.0	38	190	192	365	87
Vermont						
1991	6.0	75	450	80	360	198
1992	6.0	63	378	75	284	200
1993	6.0	82	492	67	330	216
1994	5.0	77	385	87	335	189
1995	5.0	67	335	86	288	131
1996	4.0	83	332	101	335	93
1997	5.0	63	315	83	261	249
1998	6.0	64	384	85	326	207
1999	6.0	66	396	63	249	222
2000	7.0	59	413	68	281	211

HONEY: ^{1/} Colonies, Yield, Production, Value and Stocks, 1991 - 2000

STATE & YEAR	Honey Producing Colonies	Yield per Colony	Production	Average price per pound	Value of Production	Stocks ^{2/} as of December 15
	1,000	Pounds	1,000 Pounds	Cents	1,000 Dollars	1,000 Pounds
Other States ^{3/}						
1991	4.0	45	179	^{4/}	^{4/}	87
1992	2.3	40	92	^{4/}	^{4/}	47
1993	1.9	43	81	^{4/}	^{4/}	48
1994	1.9	38	72	113	81	28
1995	1.9	42	79	144	114	33
1996	1.7	45	76	159	121	34
1997	1.9	56	107	191	204	47
1998	2.7	58	157	164	257	104
1999	3.5	47	163	225	366	86
2000	3.0	40	119	224	267	46
New England						
1991	31.0	41	1,271	^{4/}	^{4/}	535
1992	29.3	31	920	^{4/}	^{4/}	381
1993	26.9	55	1,469	^{4/}	^{4/}	644
1994	17.9	56	1,005	84	847	468
1995	22.9	46	1,054	110	1,160	452
1996	18.7	38	715	123	883	164
1997	16.9	42	706	116	818	372
1998	21.2	45	954	115	1,096	480
1999	27.0	37	990	113	1,122	453
2000	26.0	37	953	114	1,086	487

^{1/} For producers with 5 or more honey producing colonies.

^{2/} Stocks held by producers; does not include stocks under loan.

^{3/} Includes CT, NH, and RI.

^{4/} Information not available.

