



**Weather Advisory for New Jersey
And Southeastern Pennsylvania
Issued by Rutgers University
New Brunswick, NJ
8 am EDT Monday, August 4, 2008**

Rainfall amounts none today, tonight and most of Tuesday with a chance of showers late Tuesday through Wednesday. Winds for spraying, west 10 to 15 mph today, west 5 mph tonight, southwest 5 to 10 mph Tuesday. Relative humidity in percent 35 to 45 today, 90 to 100 tonight, 40 to 50 Tuesday. Dew points 60 to 65 through Tuesday. Drying conditions very good today, good most of Tuesday but possibly turning poor late Tuesday. Light dew tonight, some dew Tuesday night as well as possible wetting in a shower. Percent of possible sunshine 90 today, 80 Tuesday.

There is a near zero percent probability of precipitation during the 12 hour period beginning at 8 am and ending at 8 pm that could adversely affect the performance of pesticides that require a rain free period after application. Conditions will be unfavorable for cranberry scald today and Tuesday.

Hay cutting will see very good conditions today and good conditions most of Tuesday but possibly becoming poor by late in the day. There will be a continuing threat of scattered showers Wednesday and Thursday.

The latest 8 to 14 day outlook for the period August 11, 2008 to August 17, 2008 is calling for temperatures to average below normal and precipitation to total below normal.

Climate summary for the week ending 8am 8/4/08

Temperatures averaged above normal, averaging 74 degrees north, 77 degrees central, and 78 degrees south. Extremes were 92 degrees at Pomona, Hammonton and New Brunswick on August 2, 2008, and 58 degrees at Charlotteburg on August 4, 2008.

Weekly rainfall averaged 0.28 inches north, 0.23 inches central, and 0.26 inches south. The heaviest 24 hour total reported was 0.67 inches at Cape May Courthouse on August 2, 2008 to August 3, 2008.

Estimated soil moisture, in percent of field capacity, this past week averaged 83 percent north, 74 percent central, and 70 percent south. Four inch soil temperatures averaged 69 degrees north, 70 degrees central, and 72 degrees south.

Fall Vegetable Planting Underway

Days suitable for field work, for the week ending Sunday, August 3, 2008, were 6.0. Topsoil moisture was rated as 30% short and 70% adequate. Subsoil moisture was rated as 20% short and 80% adequate. There were measurable amounts of rainfall for the week in most localities. Temperatures were normal during the week across the Garden State. Drought conditions were lessened by scattered showers and relieved crops throughout New Jersey. Fall cabbage planting was underway as spring cabbage harvesting came to a close. Reports in central Jersey indicated good prospects for summer potatoes. Pumpkins continued growing in spite of crop damage from hail and viruses. Producers continued planting and irrigating fall vegetables. Farmers finished harvesting grain hay and second cuttings of other hay. Elliott blueberries were still being picked in the southern district.

Weather Summary for the Week Ending Monday, August 4, 2008

Weather Stations	Rainfall			Temperatures Last Week				Growing Degree Days ¹		Soil Moisture ²
	Last Week	Since March 1		Max.	Min.	Avg.	Dept.*	Total	Dept.*	
		Total	Dept.*							
	Inches	Inches	Inches	Degrees	Degrees	Degrees	Degrees	Base 50°F	Base 50°F	Percent
North										
Belvidere Bridge	0.31	17.66	-2.53	90	63	76	3	1,808	161	75
Canoe Brook	NA	NA	NA	NA	NA	NA	NA	NA	NA	NA
Charlotteburg	0.32	20.75	-0.71	86	58	73	1	1,721	443	72
Flemington	0.20	17.88	-2.72	89	59	74	0	1,774	85	82
Newton	NA	NA	NA	NA	NA	NA	NA	NA	NA	NA
Central										
Freehold	NA	NA	NA	NA	NA	NA	NA	NA	NA	NA
Long Branch	0.31	15.96	-3.96	91	63	77	2	1,759	28	64
New Brunswick	0.30	21.25	1.26	92	60	77	3	2,068	173	75
Toms River	0.28	17.21	-3.33	90	61	76	2	2,012	278	63
Trenton	0.03	19.76	0.55	89	63	77	1	2,152	177	54
South										
Cape May C.H.	0.68	14.63	-3.06	90	64	77	1	2,103	255	79
Downtown	0.12	17.17	-1.53	90	62	77	1	2,161	174	48
Glassboro	0.07	16.16	-3.52	90	65	79	3	2,120	159	56
Hammonton	0.11	15.09	-4.65	92	63	78	2	2,256	296	54
Pomona	0.31	17.89	0.04	92	63	79	4	2,227	397	63
Seabrook	NA	NA	NA	NA	NA	NA	NA	NA	NA	NA
South Harrison	0.19	16.92	-2.92	90	63	78	NA	2,117	NA	NA

* Departure from normal.

¹ Growing degree days since March 1, 2008, total and departure from normal or long term average.

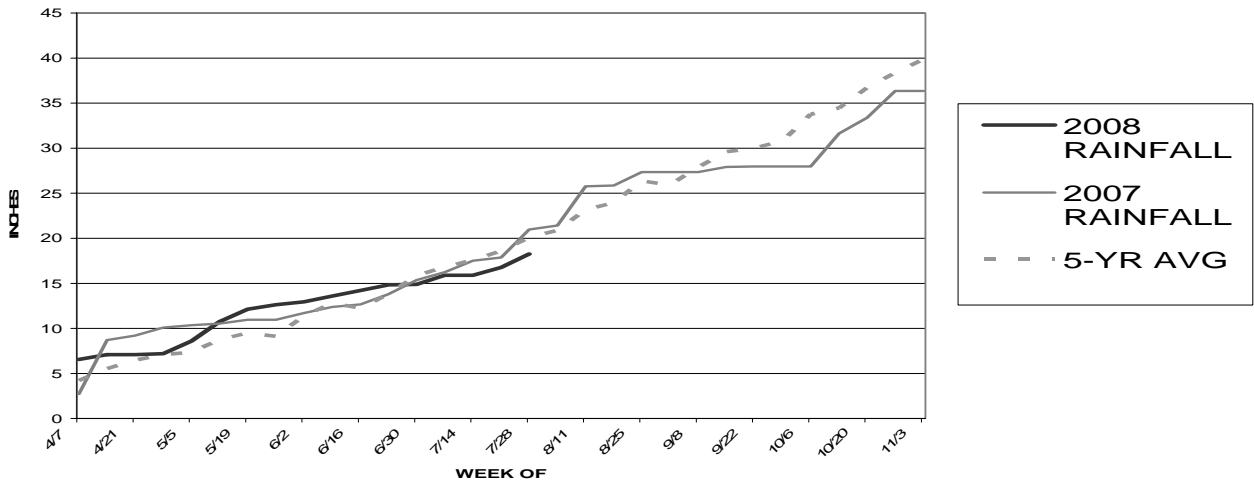
² Estimated soil moisture as % of field capacity based on climate data.

³ Data not available.

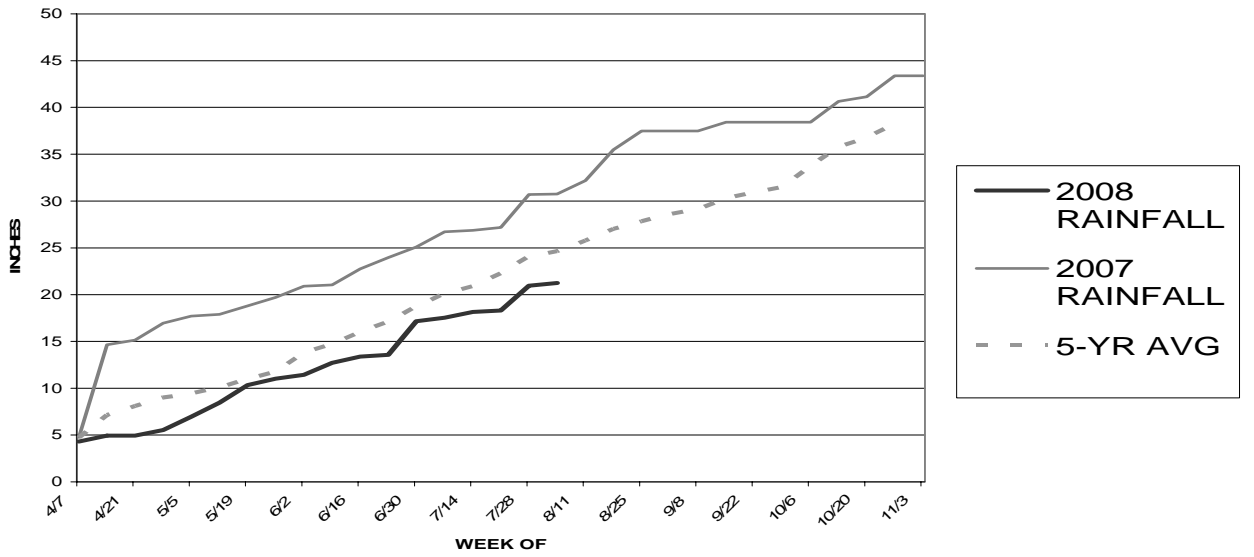
JERSEY FRESH AVAILABILITY FOR AUGUST 4, 2008

ARUGULA & CILANTRO	A light volume and fair quality of products with hot temperatures.
BABY SPINACH & BABY ARUGULA	Harvesting in good quality and quantity. Not as affected by the heat.
BASIL	Harvesting good quality product in good volume.
BEETS	Harvesting good quality in good quantity.
BLUEBERRIES	An outstanding crop this year. The late variety Elliott is available for another week or so in decreasing volume. Finishing up.
CABBAGE	Harvesting good quality product in good volume.
CANTALOUPE & MELONS	Harvesting in good volume and quality thru Labor Day.
COLLARDS	Harvesting good quality in good volume.
CUCUMBERS/PICKLES	Harvesting a fair quantity of very good quality product.
DANDELION	Good quality Spring planted San Pasquale variety available.
DILL	Harvesting very good quality in good volume.
EGGPLANT & PEPPERS	Harvesting good quality in good volume.
KALE	Very good quantity and quality of product available.
LEEK & GR. ONIONS	A good volume of good quality product is available.
MINT	Good quality harvesting in good quantity. Likes the heat.
NECTARINES	As the early Easternglo and Summer Beaut varieties are winding down in volume, a good steady volume of the more widely planted Sunglo and Flavortop varieties will be available by mid-week in very good quality and good volume. Expect a good steady supply through the early part of Sept.
PARSLEY	Very good quality Spring planted curly and plain product available in good quantities.
PEACHES	Harvesting yellow John Boy, Loring, and Bounty varieties and White Lady and Klondike variety white peaches all in peak volume. Peaches available through mid-September. Color, size, and brix are excellent.
SQUASH	Harvesting good quantities of very good quality Yellow & Zucchini.
SWEET CORN	Harvesting good quality and quantity. Just past peak of the season.
SWISS CHARD	A light to decreasing volume of good quality product available.
TOMATOES	Harvesting very good quality in good volume.
TURNIPS	Harvesting good quality and light quantity with this heat.
WHITE POTATOES	Harvesting mainly round white varieties, with some Yukon Gold and Redskin varieties as well. Source your N.J. white potatoes in their distinctive "Jersey Fresh" bags.

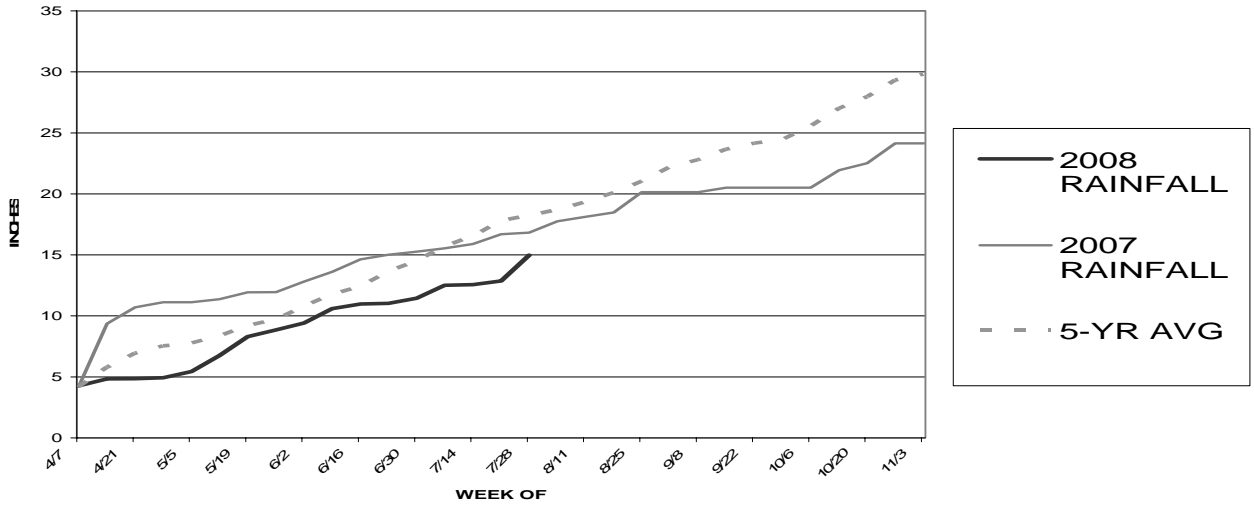
2008 TOTAL RAINFALL (NEWTON)



2008 TOTAL RAINFALL (NEW BRUNSWICK)



2008 TOTAL RAINFALL (HAMMONTON)



Source: http://www.envsci.rutgers.edu/fcst/NJ_AG.htm