



**Weather Advisory for New Jersey
And Southeastern Pennsylvania
Issued by Rutgers University
New Brunswick, NJ
8 am EDT Monday August 18, 2008**

Rainfall amounts none today, isolated areas of one tenth of an inch Tuesday. Winds for spraying west 5 to 10 mph today, light west tonight, northwest 5 to 10 mph Tuesday.

Relative humidity in percent 30 to 40 today, 90 to 100 tonight, 35 to 45 Tuesday. Dew points near 60 today, 60 to 65 tonight and Tuesday. Drying conditions good today and Tuesday. Light dew tonight and Tuesday night. Percent of possible sunshine 80 today, 60 Tuesday.

There is a near 0 percent probability of precipitation during the 12 hour period beginning at 8 am and ending at 8 pm that could adversely affect the performance of pesticides that require a rain free period after application. Conditions will be unfavorable for cranberry scald today and Tuesday.

Hay cutting conditions will be good today and Tuesday.

Soil moisture is favorable over most of the region.

The latest 8 to 14 day outlook for the period August 25, 2008 to August 31, 2008 is calling for temperatures to average near normal and precipitation to total above normal.

Climate summary for the week ending 8am 8/18/08

Temperatures averaged near normal, averaging 69 degrees north, 71 degrees central, and 72 degrees south. Extremes were 95 degrees at Canoe Brook on August 18, 2008 and 52 degrees at Canoe Brook on August 16, 2008.

Weekly rainfall averaged 0.89 inches north, 1.54 inches central, and 0.02 inches south. The heaviest 24 hour total reported was 1.87 inches at Tom's River on August 15, 2008.

Estimated soil moisture, in percent of field capacity, this past week averaged 86 percent north, 83 percent central, and 72 percent south.

Four inch soil temperatures averaged 68 degrees north, 71 degrees central, and 72 degrees south.

Peach Harvesting Continues

Days suitable for field work, for the week ending Sunday, August 17, 2008, were 5.5. Topsoil moisture was rated as 20% short, 75% adequate and 5% surplus. Subsoil moisture was rated as 15% short, 80% adequate, and 5% surplus. There were measurable amounts of rainfall for the week in most localities, with some scattered showers. Temperatures were below normal during the week across the Garden State. Harsh weather ranging from dry conditions to hailstorms continued to affect crops in some areas of New Jersey. Corn and soybeans were stressed from drought-like conditions in the central district. Producers continued second and third hay-cuttings in northern localities. Fall vegetable planting progressed. Reports for potatoes were good as harvesting began. Pumpkins were still growing and vines appeared healthy. Peach conditions remained good as harvesting persisted. Producers continued irrigating, spraying, and harvesting.

Weather Summary for the Week Ending Monday, August 18, 2008

Weather Stations	Rainfall			Temperatures Last Week				Growing Degree Days ¹		Soil Moisture ²
	Last Week	Since March 1		Max.	Min.	Avg.	Dept.*	Total	Dept.*	
		Total	Dept.*							
	Inches	Inches	Inches	Degrees	Degrees	Degrees	Degrees	Base 50°F	Base 50°F	Percent
North										
Belvidere Bridge	1.07	19.03	-3.34	87	57	71	1	2,108	160	77
Canoe Brook	0.55	19.52	-3.98	95	52	70	-1	2,081	126	72
Charlotteburg	1.98	24.32	0.60	82	54	67	-1	1,981	440	94
Flemington	0.22	18.50	-4.18	85	54	69	-2	2,061	56	74
Newton	0.63	20.16	-1.71	84	55	69	0	2,236	457	82
Central										
Freehold	1.56	15.13	NA	86	55	71	-1	1,922	NA	94
Long Branch	1.30	17.61	NA	85	59	71	-1	2,066	NA	86
New Brunswick	2.74	24.28	2.07	88	57	72	-1	2,385	162	95
Toms River	1.91	19.74	-3.05	84	56	70	-1	2,319	274	80
Trenton	0.21	20.51	-0.63	86	56	71	-3	2,468	142	52
South										
Cape May C.H.	0.00	15.17	-4.50	86	59	73	-1	2,436	234	46
Downstown	0.01	18.97	-1.83	86	57	71	-2	2,475	143	62
Glassboro	0.00	18.15	-3.61	85	61	72	-2	2,449	140	61
Hammonton	0.00	17.20	-4.59	87	59	72	-2	2,585	273	57
Pomona	0.09	19.91	-0.07	87	58	73	1	2,563	407	59
Seabrook	0.04	17.20	-2.76	86	60	73	-1	2,637	293	55
South Harrison	0.32	20.24	-1.43	85	58	71	NA	2,443	NA	NA

* Departure from normal.

¹ Growing degree days since March 1, 2008, total and departure from normal or long term average.

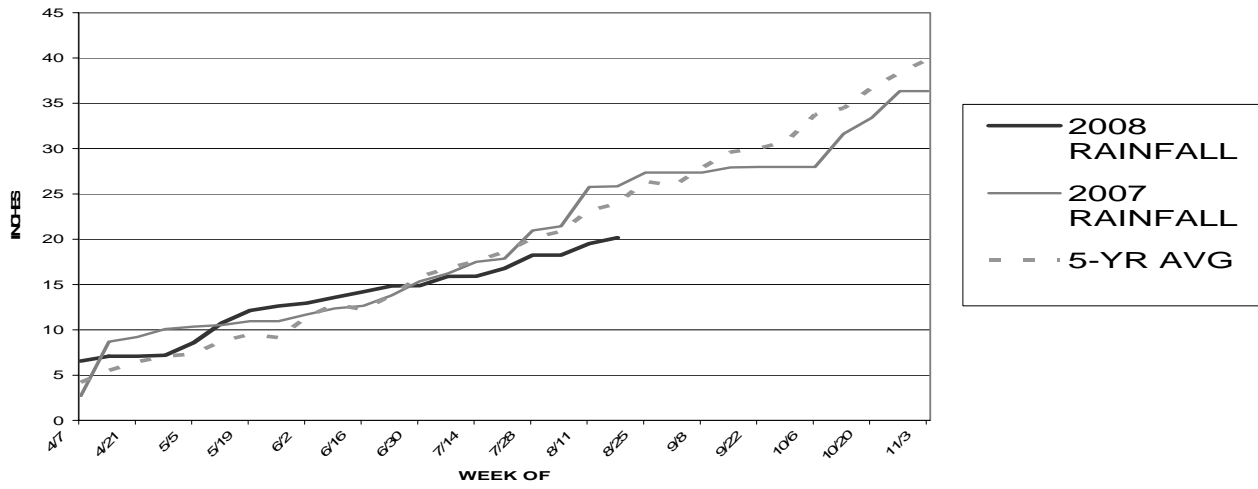
² Estimated soil moisture as % of field capacity based on climate data.

³ Data not available.

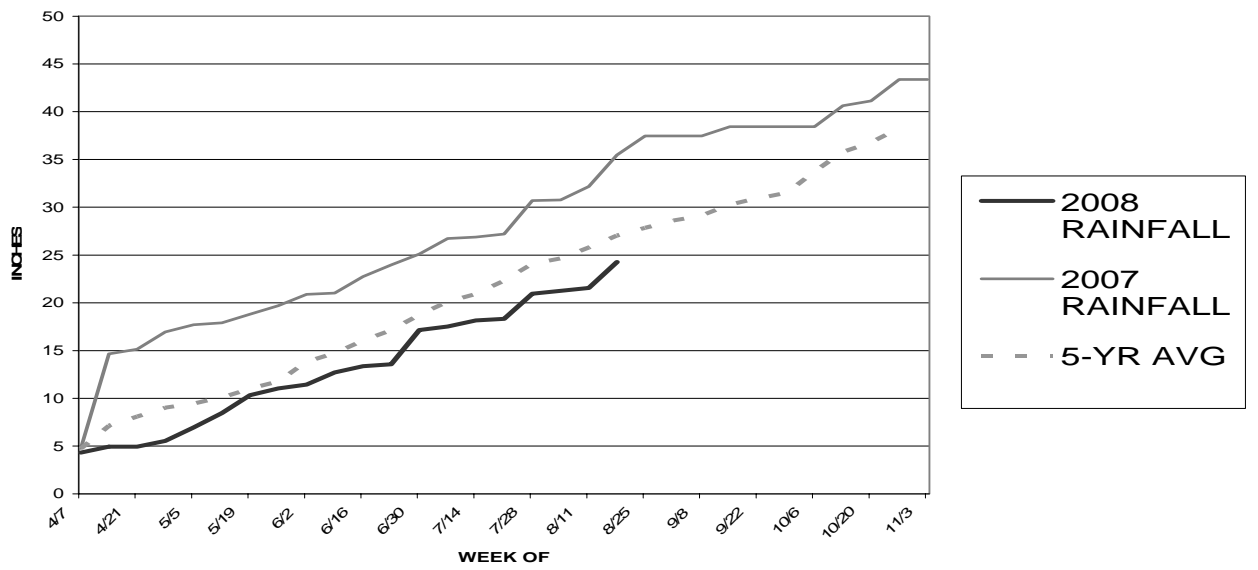
JERSEY FRESH AVAILABILITY FOR AUGUST 18, 2008

ARUGULA & CILANTRO	A light volume and fair to good quality of products due to hail effects.
BABY SPINACH & BABY ARUGULA	Harvesting in good quality and quantity. Not as affected by the heat.
BASIL	Harvesting fair to good quality product in fair volume due to hail.
BEETS	Harvesting fair to good quality and quantity.
CABBAGE	Harvesting good quality product in good volume.
CANTALOUPE & MELONS	Harvesting in light volume and fair quality due to hail effects.
COLLARDS	Harvesting good quality in good volume.
CUCUMBERS/PICKLES	Harvesting a light quantity of fair to good quality product due to hail.
DANDELION	Good quality Spring planted San Pasquale variety available.
DILL	Harvesting very good quality in good volume.
EGGPLANT	Harvesting fair to good quality and volume.
KALE	Very good quantity and quality of product available.
LEEKS & GR. ONIONS	A good volume of good quality product is available.
MINT	Harvesting fair to good quality and quantity. Likes the heat.
NECTARINES	A fair volume of good quality Fantasia variety fruit will be available for another week or so. Finishing up.
PARSLEY	Fair to good quality product available in light to fair quantities.
PEACHES	Harvesting fair to good quantities of yellow and white peaches after the hail of Aug. 10th. Yellow Bounty varieties are finishing up while Cresthaven varieties come on. White Lady variety white peaches are finishing with Klondike and Snow Giant harvesting next. A glut of southern and Ca. peaches are keeping prices down.
PEPPERS	Harvesting fair to good quality in light volume due to hail on Aug. 10.
SQUASH	Harvesting light to fair quantities of fair to good quality Yellow & Zucchini due to hail on Aug. 10th. Some growers are re-planting for a Fall harvest.
SWEET CORN	Harvesting good quality and quantity until Labor Day.
SWISS CHARD	A light to decreasing volume of good quality product available.
TOMATOES	Harvesting fair to good quality and light to fair volume due to hail.
TURNIPS	Harvesting good quality and fair quantity. Likes cooler temperatures.
WHITE POTATOES	Harvesting mainly round white varieties, with some Yukon Gold and Redskin varieties as well. Source your N.J. white potatoes in their distinctive "Jersey Fresh" bags.

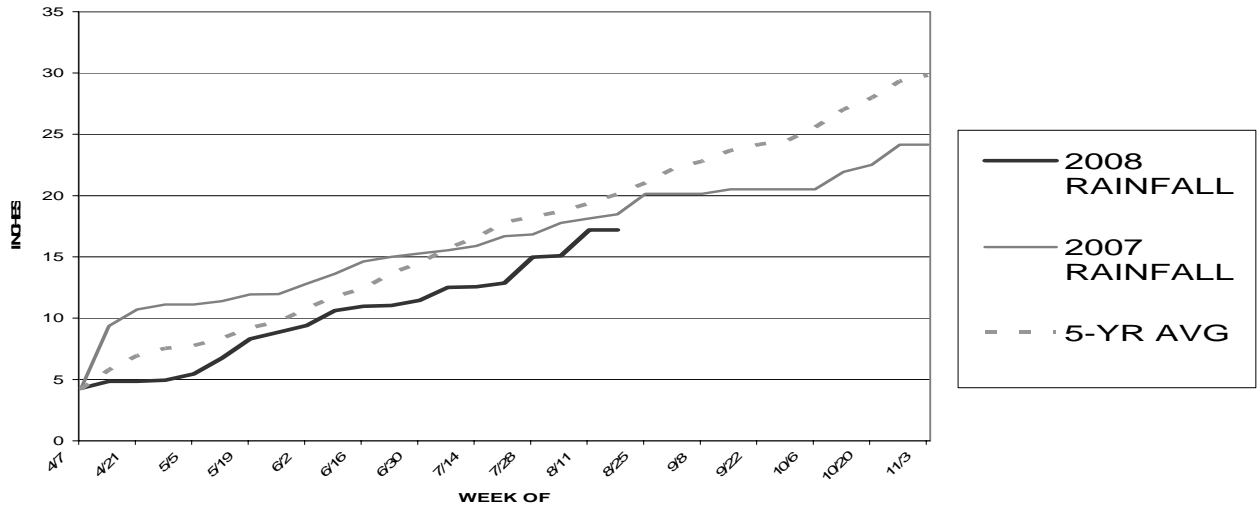
2008 TOTAL RAINFALL (NEWTON)



2008 TOTAL RAINFALL (NEW BRUNSWICK)



2008 TOTAL RAINFALL (HAMMONTON)



Source: http://www.envsci.rutgers.edu/fcst/NJ_AG.htm