



**Weather Advisory for New Jersey  
And Southeastern Pennsylvania  
Issued by Rutgers University  
New Brunswick, NJ  
8 am EDT Monday, September 8, 2008**

Rainfall amounts none through tonight, quarter to half an inch Tuesday and Tuesday night. Winds for spraying northwest 5 to 10 mph today, light south wind tonight, southwest 10 to 15 mph Tuesday.

Relative humidity in percent 35 to 45 today, 90 to 100 tonight, 45 to 55 Tuesday. Dew points mid 50s today, upper 50s tonight, mid 60s Tuesday. Drying conditions very good today, fair at best Tuesday. Heavy dew tonight, little dew but wetting in showers is likely Tuesday night. Percent of possible sunshine .90 today, 20 Tuesday.

There is a near zero percent probability of precipitation during the 12 hour period beginning at 8 am and ending at 8 pm that could adversely affect the performance of pesticides that require a rain free period after application.

Conditions might be favorable for cranberry scald today but will be unfavorable Tuesday.

Hay cutting will see good conditions today but then with a moderate risk of wetting in showers on Tuesday. Drier air will once again return on Wednesday and Thursday.

The latest 8 to 14 day outlook for the period September 15, 2008 to September 21, 2008 is calling for temperatures to average near normal and precipitation to total below normal.

**Climate summary for the week ending 8am 9/8/08**

Temperatures averaged much above normal, averaging 73 degrees north, 74 degrees central, and 75 degrees south. Extremes were 95 degrees at Canoe Brook and Downtown on September 5, 2008 and 52 degrees at Charlotteburg and Newton on September 2, 2008.

Weekly rainfall averaged 3.26 inches north, 2.89 inches central, and 2.05 inches south. The heaviest 24 hour total reported was 4.70 inches at Canoe Brook on September 6, 2008 to September 7, 2008.

Estimated soil moisture, in percent of field capacity, this past week averaged 83 percent north, 75 percent central, and 65 percent south. Four inch soil temperatures averaged 72 degrees north, 73 degrees central, and 74 degrees south.

**Early Pumpkin Harvesting Begins**

Days suitable for field work, for the week ending Sunday, September 7, 2008, were 6.0. Topsoil moisture was rated as 20% short, 70% adequate, and 10% surplus. Subsoil moisture was rated as 29% short, 65% adequate, and 6% surplus. There were measurable amounts of rainfall for the week in all localities. Temperatures were above normal during the week across the Garden State. Crops were relieved by some much needed rainfall. Early soybeans began to mature in some localities. Producers continued harvesting hay in the northern and central districts. Pumpkin conditions remained in good standing as early harvesting began in south Jersey. Peach harvesting was winding down, while early apple harvesting continued. Fieldwork activities included planting, spraying, and other basic maintenance.

**Weather Summary for the Week Ending Monday, September 8, 2008**

Weather Stations	Rainfall			Temperatures Last Week				Growing Degree Days <sup>1</sup>		Soil Moisture <sup>2</sup>
	Last Week	Since March 1		Max.	Min.	Avg.	Dept.*	Total	Dept.*	
		Total	Dept.*							
	<i>Inches</i>	<i>Inches</i>	<i>Inches</i>	<i>Degrees</i>	<i>Degrees</i>	<i>Degrees</i>	<i>Degrees</i>	<i>Base 50°F</i>	<i>Base 50°F</i>	<i>Percent</i>
<b>North</b>										
Belvidere Bridge	1.87	21.06	-4.42	94	57	75	10	2,581	262	96
Canoe Brook	4.82	24.94	-1.78	95	53	72	6	2,520	179	98
Charlotteburg	3.32	27.71	0.72	91	52	72	9	2,379	518	97
Flemington	3.45	22.49	-3.17	94	56	74	8	2,508	106	98
Newton	2.85	23.08	-1.84	92	52	73	10	2,667	555	97
<b>Central</b>										
Freehold <sup>3</sup>	2.13	N/A	N/A	91	55	73	5	N/A	N/A	97
Long Branch	1.94	19.58	-5.76	86	60	72	4	2,511	30	94
New Brunswick	4.09	28.96	3.65	93	57	75	6	2,851	174	98
Toms River	3.27	23.04	-2.85	93	55	73	3	2,761	285	93
Trenton	3.02	23.99	0.01	94	59	76	7	2,967	194	94
<b>South</b>										
Cape May C.H.	1.77	16.94	-5.46	87	58	74	3	2,912	437	94
Downtown	1.60	20.57	-3.06	95	55	74	5	2,944	163	94
Glassboro	2.45	20.63	-4.07	94	62	76	7	2,968	209	94
Hammonton	1.69	18.89	-5.80	94	55	76	7	3,072	311	93
Pomona	2.89	22.91	0.25	92	58	75	7	3,048	473	93
Seabrook	1.91	19.12	-3.52	93	60	76	7	3,139	343	94
South Harrison	1.90	22.14	-2.16	93	61	76	NA	2,949	NA	NA

\* Departure from normal.

<sup>1</sup> Growing degree days since March 1, 2008, total and departure from normal or long term average.

<sup>2</sup> Estimated soil moisture as % of field capacity based on climate data.

<sup>3</sup> Data not available.

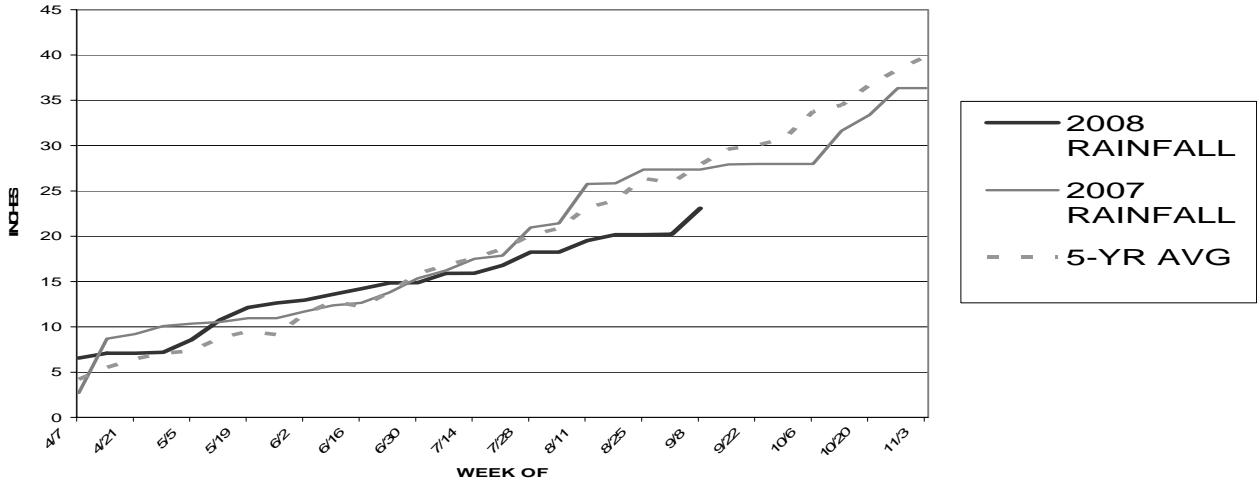
## JERSEY FRESH AVAILABILITY FOR SEPTEMBER 8, 2008

<b>ARUGULA &amp; CILANTRO</b>	A fair to increasing volume of fair to good quality products.
<b>BABY SPINACH &amp; BABY ARUGULA</b>	Harvesting in good quality and quantity.
<b>BASIL &amp; MINT</b>	Harvesting fair to good quality product in fair volume.
<b>BEETS</b>	Harvesting good quality and quantity.
<b>CABBAGE</b>	Harvesting good quality product in good volume.
<b>COLLARDS</b>	Harvesting good quality in good volume.
<b>CUCUMBERS/PICKLES</b>	Harvesting a light to fair quantity of fair to good quality product. Less product available than normal due to early Aug. hail damage.
<b>DANDELION</b>	Good quality Spring planted San Pasquale variety available.
<b>DILL &amp; KALE</b>	Harvesting very good quality in good volume.
<b>EGGPLANT</b>	Harvesting fair to good quality and volume.
<b>LEEK &amp; GR. ONIONS</b>	A good volume of good quality product is available.
<b>NECTARINES</b>	Finishing up with a light volume of good quality Fantasia variety.
<b>PARSLEY</b>	Fair to good quality product available in light to increasing quantities.
<b>PEACHES</b>	Harvesting fair to decreasing quantities of yellow & white peaches; finishing up in several weeks. Yellow Jerseyglo, Jerseyqueen, & Fayette varieties are finishing up. Encore, our most heavily planted yellow peach variety, and Laurol, are both harvesting. Lady Nancy white variety harvesting in volume w/ Snow Giant starting.
<b>PEPPERS</b>	Harvesting fair to good quality in light to fair volume. Less product available than normal due to early Aug. hail damage. Some growers stripped their damaged plants and are awaiting harvest.
<b>RADISHES &amp; TURNIPS</b>	Temperature sensitive, a fair quantity of good quality products are available with the cooling weather.
<b>SQUASH</b>	Harvesting light to fair quantities of fair to good quality Yellow & Zucchini. Less product available than normal due to early Aug. hail damage. Butternut and Acorn available in fair quantity and good quality.
<b>SWEET CORN</b>	Harvesting fair quality and fair to decreasing quantity as Fall insect pressures increase and cooler overnight temperatures slow ripening.
<b>SWISS CHARD</b>	A light to fair volume of fair to good quality product available.
<b>TOMATOES</b>	Harvesting fair to good quality and light to fair volume. Less product available than normal due to early Aug. hail damage.
<b>WHITE POTATOES</b>	Harvesting mainly round white varieties, with some Yukon Gold and Redskin varieties as well. Source your N.J. white potatoes in their distinctive "Jersey Fresh" bags.

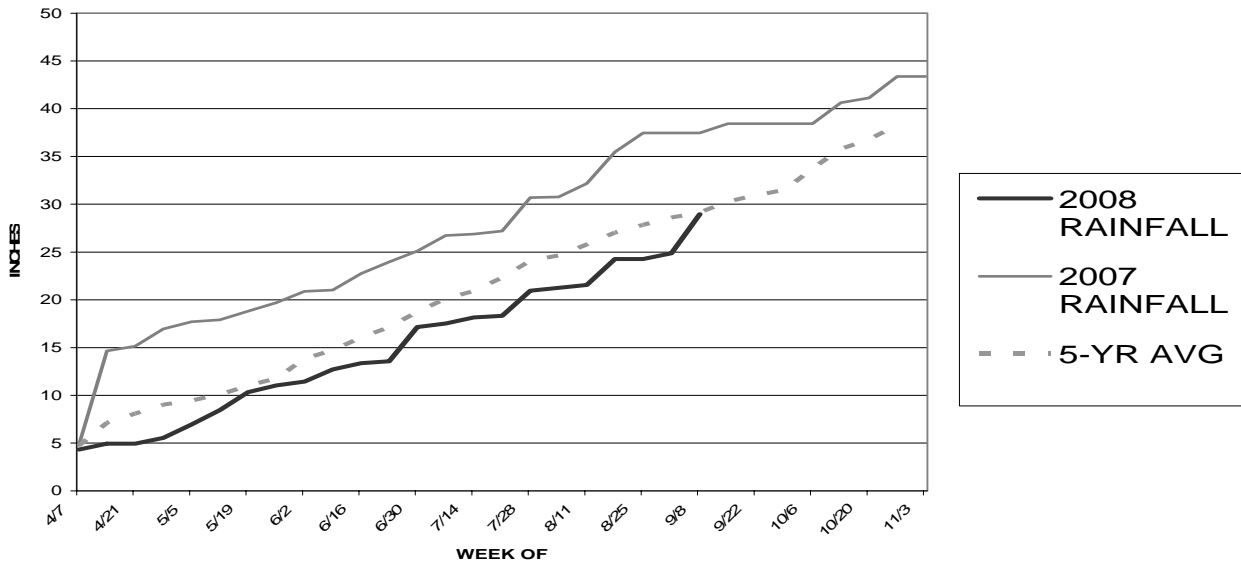
## JERSEY FRESH FORECAST

<b>ESCAROLE &amp; ENDIVE</b>	Will be harvested in light volume around the third week of September.
<b>LETTUCES</b>	Will be harvested in light volume around the third week of September.
<b>SPINACH</b>	Will be harvested in light volume around the third week of September.
<b>SWEET POTATOES</b>	Should begin harvesting in mid-September. With curing, volume won't be available until the week after that.

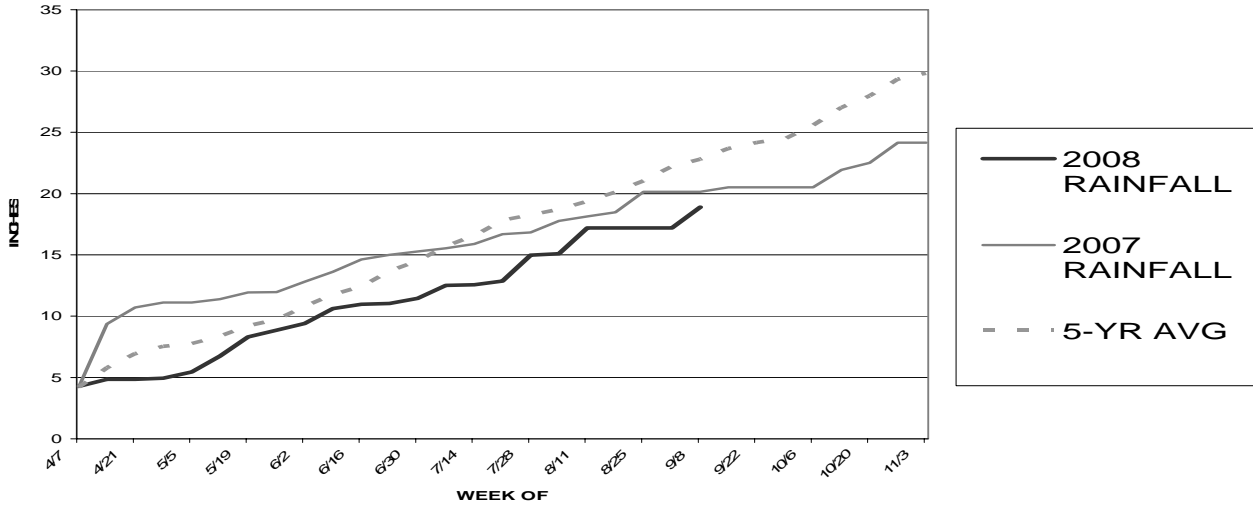
**2008 TOTAL RAINFALL (NEWTON)**



**2008 TOTAL RAINFALL (NEW BRUNSWICK)**



**2008 TOTAL RAINFALL (HAMMONTON)**



Source: [http://www.envsci.rutgers.edu/fcst/NJ\\_AG.htm](http://www.envsci.rutgers.edu/fcst/NJ_AG.htm)