



**Weather Advisory for New Jersey
And Southeastern Pennsylvania
Issued by Rutgers University
New Brunswick, NJ
8 am EDT Monday, September 22, 2008**

Rainfall amounts none through Tuesday. Winds for spraying northeast 5 to 10 mph through Tuesday.

Relative humidity in percent 30 to 40 today, 90 to 100 tonight, 30 to 40 Tuesday. Dew points low to mid 50s through Tuesday. Conditions good today, good Saturday. Heavy dew tonight, heavy dew Tuesday night. Percent of possible sunshine 40 today, 60 Tuesday.

There is less than a 10 percent probability of precipitation during the 12 hour period beginning at 8 am and ending at 8 pm that could adversely affect the performance of pesticides that require a rain free period after application.

Conditions might be favorable for cranberry scald today and Tuesday. Temperatures in the cranberry bogs should remain above freezing tonight and Tuesday night.

Hay cutting will continue to be good over the next several days with moderate humidity and little threat of rain.

Soil moisture continues to decrease and irrigation is necessary on the sandier soils with no precipitation expected before the end of the week.

The latest 8 to 14 day outlook for the period September 29, 2008 to October 5, 2008 is calling for temperatures to average above normal and precipitation to total below normal.

Climate summary for the week ending 8am 9/22/08

Temperatures averaged near normal, averaging 62 degrees north, 64 degrees central, and 65 degrees south. Extremes were 87 degrees at New Brunswick on September 16, 2008, and 40 degrees at Charlotteburg on September 21, 2008.

Weekly rainfall averaged 0.00 inches north, 0.00 inches central, and 0.00 inches south. The heaviest 24 hour total reported was trace inches at Atlantic City on September 16, 2008 to September 17, 2008.

Estimated soil moisture, in percent of field capacity, this past week averaged 84 percent north, 75 percent central, and 70 percent south.

Four inch soil temperatures averaged 64 degrees north, 66 degrees central, and 68 degrees south.

Apple Harvesting Continues

Days suitable for field work, for the week ending Sunday, September 21, 2008, were 7.0. Topsoil moisture was rated as 10% short and 90% adequate. Subsoil moisture was rated as 40% short and 60% adequate. There were no measurable amounts of rainfall for the week in all localities. Temperatures were normal during the week across the Garden State. Farmers continued harvesting early soybeans and field corn for grain. Late season vegetable harvesting included tomatoes, peppers, cucumber, and squash. In the southern district, alfalfa and other hay varieties rated mostly fair. Pumpkins were aided by dry weather conditions. Apple trees were in mid-harvest in the northern and southern districts. Producers continued planting fall vegetables, packing fruit, hay harvesting, and pest management.

Weather Summary for the Week Ending Monday, September 22, 2008

Weather Stations	Rainfall			Temperatures Last Week				Growing Degree Days ¹		Soil Moisture ²
	Last Week	Since March 1		Max.	Min.	Avg.	Dept.*	Total	Dept.*	
		Total	Dept.*							
	Inches	Inches	Inches	Degrees	Degrees	Degrees	Degrees			Percent
North										
Belvidere Bridge	0.00	22.47	-4.91	86	45	64	3	2,824	296	72
Canoe Brook	0.00	25.88	-2.88	86	43	62	0	2,731	191	81
Charlotteburg	0.00	29.24	0.20	79	40	60	1	2,564	549	78
Flemington	0.00	23.74	-3.75	82	41	61	-1	2,723	120	84
Newton	0.00	24.97	-1.77	80	44	61	2	2,877	607	78
Central										
Freehold ³	0.00	N/A	N/A	85	42	62	-2	N/A	N/A	77
Long Branch	0.00	20.66	-6.39	85	50	65	1	2,757	49	60
New Brunswick	0.00	30.26	3.12	87	46	64	1	3,091	193	82
Toms River	0.00	23.76	-3.89	84	44	64	0	3,000	286	58
Trenton	0.00	25.59	-0.10	83	48	65	0	3,221	209	61
South										
Cape May C.H.	0.00	18.36	-5.62	85	49	65	-2	3,181	439	62
Downstown	0.00	21.43	-3.74	84	44	64	-1	3,195	170	64
Glassboro	0.00	21.78	-4.67	83	53	67	2	3,239	246	60
Hammonton	0.00	20.79	-5.63	85	44	65	0	3,333	332	61
Pomona	0.00	23.62	-0.39	86	46	65	1	3,309	510	56
Seabrook	0.00	20.20	-4.03	84	49	65	-1	3,414	369	61
South Harrison	0.00	23.02	-2.90	83	50	66	NA	3,216	NA	NA

* Departure from normal.

¹ Growing degree days since March 1, 2008, total and departure from normal or long term average.

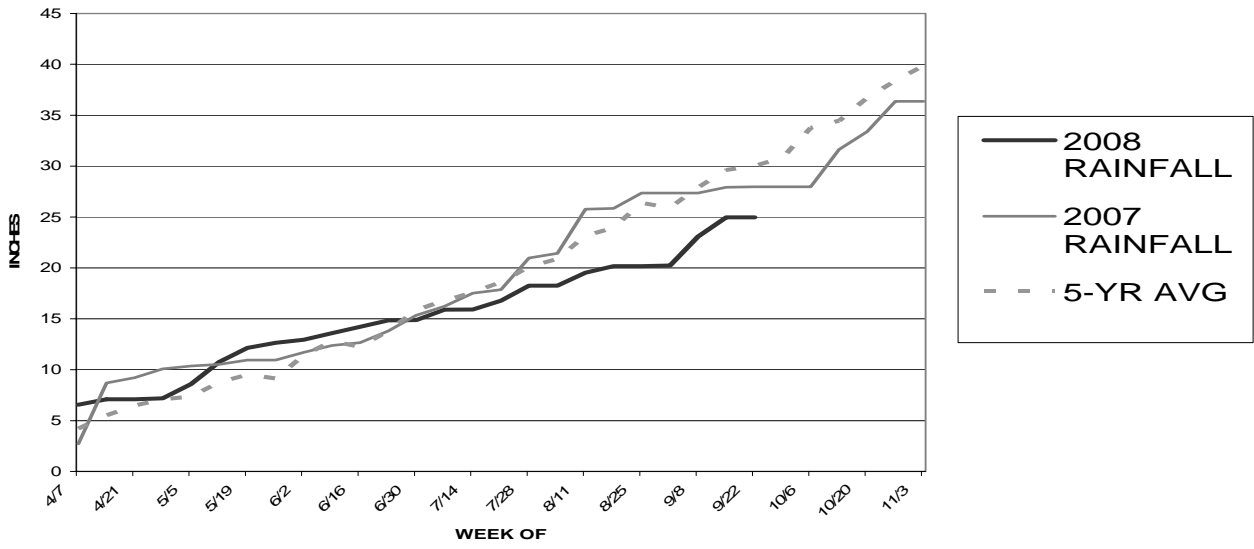
² Estimated soil moisture as % of field capacity based on climate data.

³ Data not available.

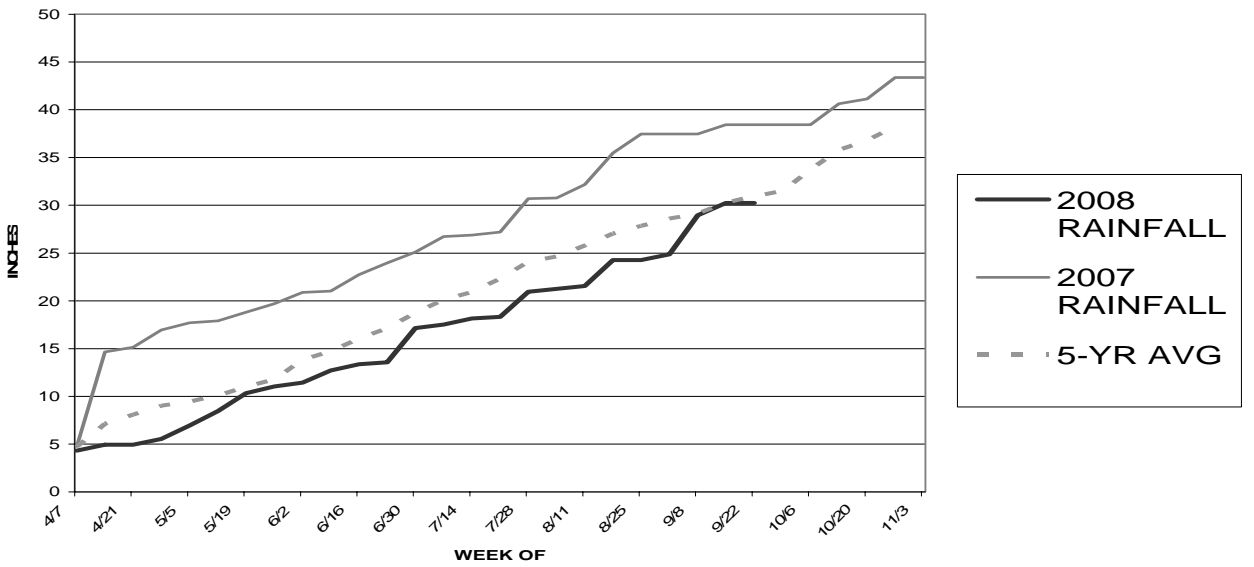
JERSEY FRESH AVAILABILITY FOR SEPTEMBER 22, 2008

APPLES	Fresh product is available now through December. Jonathan, Gala, & Courtland winding down. Red Delicious, Empire, Jonagold, and McCoun picking now. Golden Delicious, Rome, and Stayman/Winesap starting early October. Braeburn, Fuji, and Granny Smith will start mid to late October. Cider is available until Christmas in wholesale volume, through late Spring for retail sales.
ARUGULA & CILANTRO	A good volume and quality of products.
BABY SPINACH & BABY ARUGULA	Harvesting in good quality and quantity.
BASIL & MINT	Harvesting good quality product in fair to declining volume.
BEETS	Harvesting good quality and quantity.
CABBAGE	Harvesting good quality product in good volume.
COLLARDS	Harvesting good quality in good volume.
CUCUMBERS/PICKLES	Harvesting a light quantity of fair to good quality product. Less product available than normal due to early Aug. hail damage.
DILL & KALE	Harvesting very good quality in good volume.
EGGPLANT	Harvesting fair to good quality in fair volume.
ESCAROLE & ENDIVE	Harvesting in light to increasing volume and good quality.
LEEK & GR. ONIONS	A good volume of good quality product is available.
LETTUCES	Harvesting a light to increasing volume of very good quality Boston & Romaine. Red & Green Leaf starting.
PARSLEY	Good quality product available in fair to good quantities.
PEACHES	Harvesting very light quantities of good quality yellow & white peaches; finishing up within the next week. Encore, our most heavily planted yellow peach variety, and Laurol, are both harvesting. Snow Giant white peaches harvesting.
PEPPERS	Harvesting fair to good quality in light to fair volume. Less product available than normal due to early Aug. hail damage.
RADISHES & TURNIPS	Temperature sensitive, a good quantity & quality of products are available with the cooling weather.
SPINACH	Harvesting in light to inc. volume of very good quality product.
SQUASH	Harvesting light to fair quantities of fair to good quality Yellow & Zucchini. Less product available than normal due to Aug. hail. Butternut & Acorn available in fair quantity & good quality.
SWEET CORN	Harvesting fair to good quality & light to decreasing quantity as Fall insect pressures increase and cool overnight temps. slow ripening.
SWEET POTATOES	Just started harvesting very good quality potatoes. With curing, volume won't be available until later next week.
SWISS CHARD	A fair volume of good quality product available.
TOMATOES	Harvesting fair to good quality and light volume. Less product available than normal due to early Aug. hail damage. Grape tomatoes still harvesting through early October.
WHITE POTATOES	Harvesting mainly round white varieties, with some Yukon Gold and Redskin varieties as well.

2008 TOTAL RAINFALL (NEWTON)



2008 TOTAL RAINFALL (NEW BRUNSWICK)



2008 TOTAL RAINFALL (HAMMONTON)

