



**Weather Advisory for New Jersey
And Southeastern Pennsylvania
Issued by Rutgers University
New Brunswick, NJ
8 am EDT Monday, September 29, 2008**

Rainfall amounts none expected through Tuesday. Winds for spraying north around 10 mph today, light and variable tonight, southeast 5 to 10 mph Tuesday.

Relative humidity in percent 50 to 60 today, near 100 tonight, 50 to 60 Tuesday. Dew points upper 50s to low 60s through Tuesday. Drying conditions fair today and fair Tuesday. Heavy dew tonight and again Tuesday night. Percent of possible sunshine 30 today, 40 Tuesday.

There is a 10 percent probability of precipitation during the 12 hour period beginning at 8 am and ending at 8 pm that could adversely affect the performance of pesticides that require a rain free period after application.

Conditions will be unfavorable for cranberry scald today and Tuesday. Temperatures in the cranberry bogs will remain above freezing tonight and Tuesday night.

Hay cutting will see improved but not good conditions over the next couple of days with no expected rainfall but only fair drying.

The latest 8 to 14 day outlook for the period October 6, 2008 to October 12, 2008 is calling for temperatures to average near normal and precipitation to total below normal.

Climate summary for the week ending 8am 9/29/08

Temperatures averaged above normal, averaging 62 degrees north, 64 degrees central, and 66 degrees south. Extremes were 80 degrees at Hammonton on September 29, 2008, and 44 degrees at Charlotteburg on September 25, 2008.

Weekly rainfall averaged 2.24 inches north, 2.97 inches central, and 1.40 inches south. The heaviest 24 hour total reported was 2.78 inches at Freehold on September 25, 2008 to September 26, 2008.

Estimated soil moisture, in percent of field capacity, this past week averaged 89 percent north, 85 percent central, and 75 percent south.

Four inch soil temperatures averaged 61 degrees north, 63 degrees central, and 64 degrees south.

Recent Rainfall Improve Soil Conditions

Days suitable for field work, for the week ending Sunday, September 28, 2008, were 5.0. Topsoil moisture was rated as 5% short, 90% adequate, and 5% surplus. Subsoil moisture was rated as 40% short and 60% adequate. There were measurable amounts of rainfall for the week in all localities. Temperatures were above normal during the week across the Garden State. Pastures were relieved by recent rainfall. Hay conditions rated fair to good as second, third, and some fourth cuttings continued throughout the state. In the southern district, reports for sweet potatoes were good as harvesting continued. Prospects for pumpkins were favorable, but vary statewide. Fall vegetables finishing included tomatoes, sweet corn, eggplant, and peppers. Farmers continued harvesting apples, cranberries, and grapes.

Weather Summary for the Week Ending Monday, September 29, 2008

Weather Stations	Rainfall			Temperatures Last Week				Growing Degree Days ¹		Soil Moisture ²
	Last Week	Since March 1		Max.	Min.	Avg.	Dept.*	Total	Dept.*	
		Total	Dept.*							
	Inches	Inches	Inches	Degrees	Degrees	Degrees	Degrees			Percent
North										
Belvidere Bridge	1.88	24.35	-3.97	78	49	64	5	2,922	325	100
Canoe Brook	N/A	N/A	N/A	N/A	N/A	N/A	N/A	N/A	N/A	N/A
Charlotteburg	2.75	31.99	1.93	72	44	60	4	2,638	571	100
Flemington	2.20	25.94	-2.47	75	44	62	3	2,807	130	100
Newton	2.13	27.10	-5.56	73	47	62	6	2,964	641	100
Central										
Freehold ³	3.60	N/A	N/A	75	49	64	3	N/A	N/A	100
Long Branch	3.59	24.25	-3.65	72	59	65	3	2,865	68	100
New Brunswick	3.15	33.41	5.35	76	48	63	2	3,185	203	100
Toms River	N/A	N/A	N/A	N/A	N/A	N/A	N/A	N/A	N/A	N/A
Trenton	1.54	27.13	0.59	75	51	64	2	3,320	215	100
South										
Cape May C.H.	1.30	19.66	-5.11	77	51	66	1	3,292	440	96
Downstown	1.91	23.34	-2.60	78	48	64	1	3,296	172	100
Glassboro	0.99	22.77	-4.55	79	55	68	6	3,364	277	86
Hammonton	0.95	21.74	-5.55	80	49	65	3	3,442	348	85
Pomona	1.70	25.32	0.73	76	48	65	4	3,416	543	100
Seabrook	1.55	21.75	-3.28	79	52	66	3	3,530	385	100
South Harrison	1.12	24.14	-2.60	78	52	65	NA	3,324	NA	NA

* Departure from normal.

¹ Growing degree days since March 1, 2008, total and departure from normal or long term average.

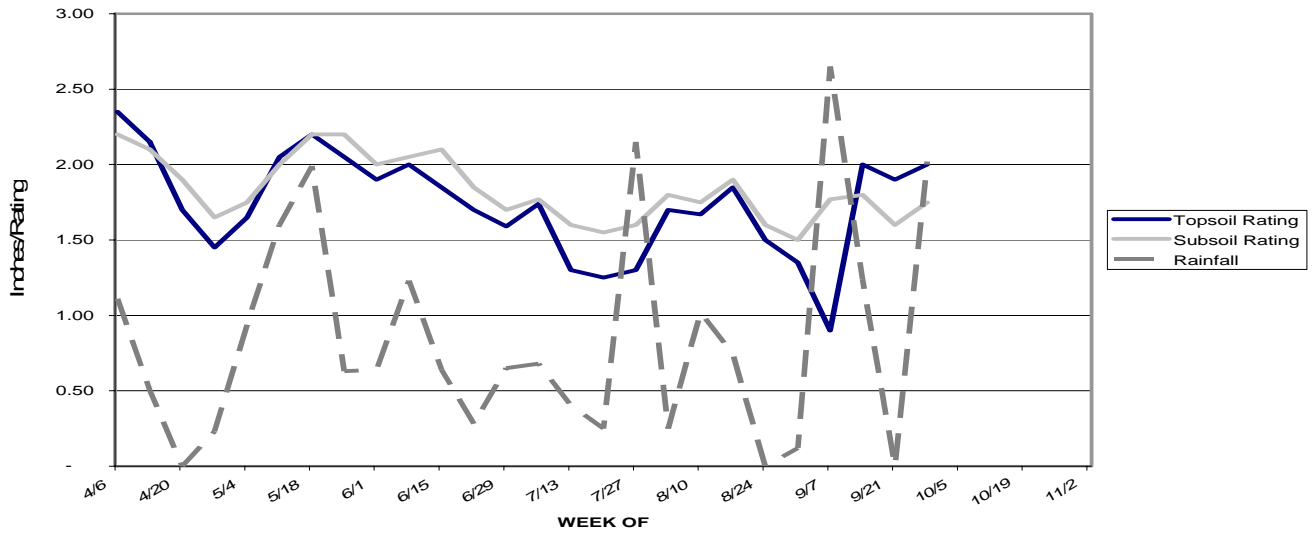
² Estimated soil moisture as % of field capacity based on climate data.

³ Data not available.

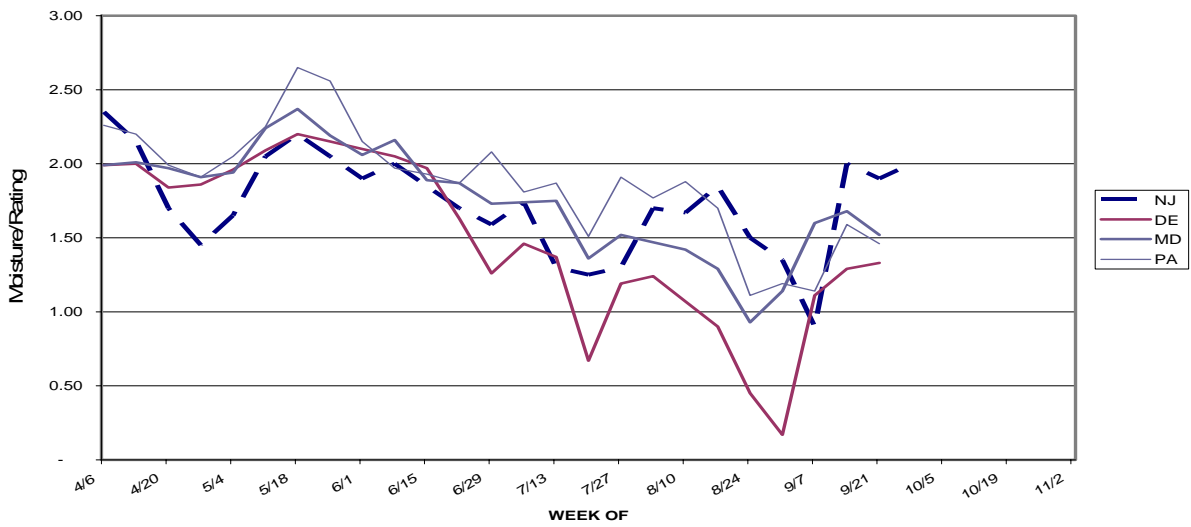
JERSEY FRESH AVAILABILITY FOR SEPTEMBER 29, 2008

APPLES	Fresh product is available now through December. Red Delicious, Empire, Jonagold, and McCoun winding down. Golden Delicious, Rome, and Stayman/Winesap starting early October. Braeburn, Fuji, and Granny Smith will start mid to late October. Cider is available until Christmas in wholesale volume, through late Spring for retail sales.
ARUGULA & CILANTRO	A good volume and quality of products.
BABY SPINACH & BABY ARUGULA	Harvesting in good quality and quantity.
BASIL & MINT	Harvesting good quality product in fair to declining volume.
BEETS	Harvesting good quality and quantity.
CABBAGE	Harvesting good quality product in good volume.
COLLARDS	Harvesting good quality in good volume.
CUCUMBERS/PICKLES	Harvesting a light quantity of fair to good quality product. Less product available than normal due to early Aug. hail damage.
DILL & KALE	Harvesting very good quality in good volume.
EGGPLANT	Harvesting fair to good quality in fair to decreasing volume.
ESCAROLE & ENDIVE	Harvesting in fair to increasing volume and very good quality.
LEEKS & GR. ONIONS	A good volume of good quality product is available.
LETTUCES	Harvesting a fair to good volume of very good quality Boston, Romaine, & Red & Green Leaf.
PARSLEY	Good quality product available in fair to good quantities.
PEACHES	Finishing up.
PEPPERS	Harvesting fair to good quality in light to fair volume. Less product available than normal due to early Aug. hail damage.
RADISHES & TURNIPS	Temperature sensitive, a good quantity & quality of products are available with the cooling weather.
SPINACH	Harvesting in fair to increasing volume of very good quality product.
SQUASH	Harvesting light quantities of fair to good quality Yellow & Zucchini. Less product available than normal due to Aug. hail. Butternut & Acorn available in fair quantity & good quality.
SWEET CORN	Harvesting fair to good quality in very light to decreasing quantity as Fall insect pressures increase and cool overnight temperatures slow ripening.
SWEET POTATOES	Harvesting very good quality potatoes in good volume.
SWISS CHARD	A good volume of good quality product available.
TOMATOES	Harvesting fair to good quality and light volume. Less product available than normal due to early Aug. hail damage. Grape tomatoes still harvesting through early October.
WHITE POTATOES	Harvesting mainly round white varieties, with some Yukon Gold and Redskin varieties as well.

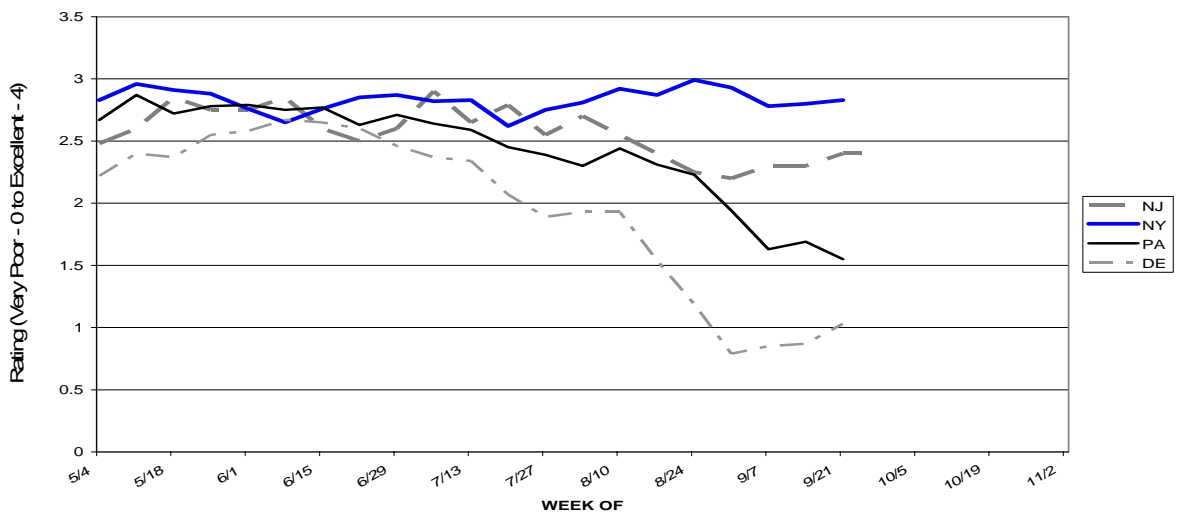
Topsoil/Subsoil v Rainfall Relation(NJ)



Topsoil Moisture



Pasture and Range Condition



Source: http://www.envsci.rutgers.edu/fcst/NJ_AG.htm