



**Agricultural Weather Advisory For New Jersey
And Southeastern Pennsylvania
Issued By Rutgers University
New Brunswick, NJ
8 am EDT Monday, August 17, 2009**

Rainfall amounts none through Tuesday. Winds for spraying southwest 5 to 10 mph through Tuesday.

Relative humidity in percent 35 to 45 today, 90 to 100 tonight, 35 to 45 Tuesday. Dew points low to mid 60s through Tuesday. Drying conditions very good today and Tuesday. Moderate dew tonight and Tuesday night. Percent of possible sunshine 90 today, 90 Tuesday.

There is a near zero percent probability of precipitation during the 12 hour period beginning at 8 am and ending at 8 pm. Rainfall could adversely affect the performance of pesticides that require a rain-free period after application.

Conditions will be unfavorable for cranberry scald today and Tuesday.

Hay cutting should see a very good haying period this week with only a slight chance of scattered afternoon thundershowers Wednesday and Thursday.

The latest 8 to 14 day outlook for the period August 24, 2009 to August 30, 2009 is calling for temperatures to average below normal and precipitation to average near normal.

Climate summary for the week ending 8am 8/17/09

Temperatures averaged much above normal, averaging 76 degrees north, 77 degrees central, and 77 degrees south. Extremes were 96 degrees at Canoe Brook on August 11, 2009, and 62 degrees at Freehold and Cape May Court House on August 14, 2009 and August 16, 2009.

Weekly rainfall averaged 1.06 inches north, 0.41 inches central, and 0.87 inches south. The heaviest 24 hour total reported was 1.51 inches at Belvidere on August 13, 2009 to August 14, 2009.

Estimated soil moisture, in percent of field capacity, this past week averaged 74 percent north, 60 percent central, and 80 percent south.

Four inch soil temperatures averaged 74 degrees north, 75 degrees central, and 77 degrees south.

Fall Vegetable Planting Continues

Days suitable for field work, for the week ending Sunday, August 16, 2009, were 6.0. Topsoil moisture was rated as 85% adequate and 15% surplus. Subsoil moisture was rated as 90% adequate and 10% surplus. There were measurable amounts of rainfall for the week in all localities. Temperatures were above normal across the Garden State. Producers continued second and third cuttings of hay. Vegetable growers continued harvesting crops with conditions rated mostly good. There were reports of blight on tomatoes in the central district. Harvest continued for Butternut, Spaghetti, and Acorn squash varieties. Peaches approached mid-harvest in good conditions with excellent sizing. Apple harvesting progressed in North Jersey. Other activities included planting fall crops, spraying pesticides, and spreading fertilizer.

Weather Summary for the Week Ending Monday, August 17, 2009

Weather Stations	Rainfall			Temperatures Last Week				Growing Degree Days ¹		Soil Moisture ²
	Last Week	Since March 1		Max.	Min.	Avg.	Dept.*	Total	Dept.*	
		Total	Dept.*							
	Inches	Inches	Inches	Degrees	Degrees	Degrees	Degrees			Percent
North										
Belvidere Bridge	1.81	22.96	0.74	92	64	75	5	1,903	-25	86
Canoe Brook	1.18	22.07	-1.27	96	66	79	8	1,961	27	72
Charlotteburg	0.16	18.50	-5.06	91	63	75	7	1,807	284	48
Flemington	1.13	27.35	4.82	92	63	76	4	2,074	90	76
Newton	1.04	22.10	0.39	90	64	75	6	1,857	97	81
Central										
Freehold	0.17	23.79	1.86	92	62	76	3	2,181	65	54
Long Branch	0.40	26.10	4.04	94	65	77	4	1,991	-46	40
New Brunswick	0.02	25.57	3.52	95	63	78	5	2,215	15	61
Toms River	0.21	24.00	1.37	94	63	77	5	2,109	85	46
Trenton	1.32	26.25	5.25	93	65	78	4	2,318	16	73
South										
Cape May C.H.	0.06	20.09	0.56	91	62	75	0	2,214	36	32
Downstown	0.81	21.10	0.45	91	63	77	4	2,305	-4	76
Glassboro	0.85	28.08	6.47	94	67	78	4	2,429	144	79
Hammonton	0.99	22.83	1.18	93	64	79	5	2,456	168	72
Pomona	1.39	27.62	7.79	94	64	78	6	2,378	244	69
Seabrook	1.11	17.52	-2.31	92	65	78	4	1,995	-325	78
South Harrison ³	0.12	15.89	-5.64	92	65	77	NA	NA	NA	NA

*Departure from normal.

¹ Growing degree days since March 1, 2009, total and departure from normal or long term average.

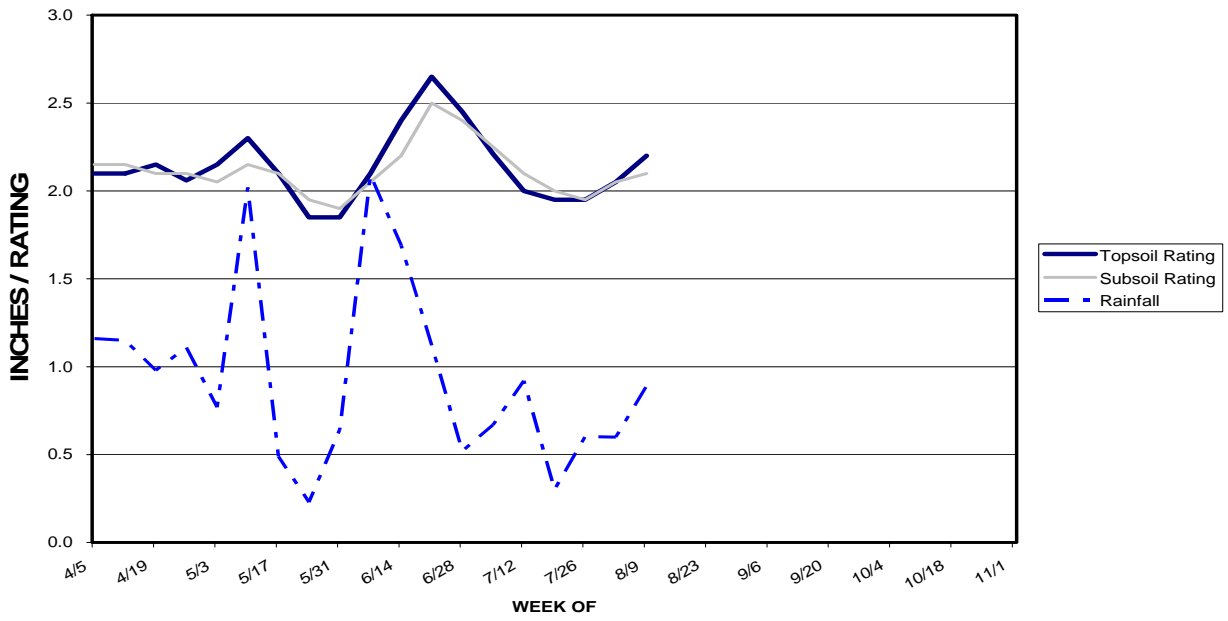
² Estimated soil moisture as % of field capacity based on climate data.

³ Data not available.

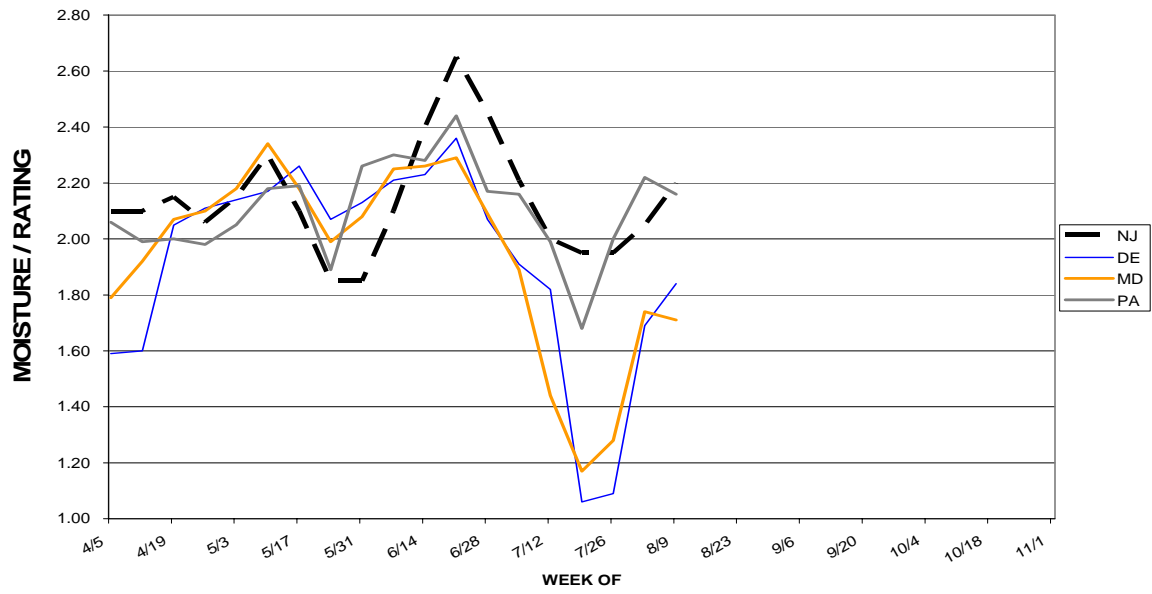
JERSEY FRESH AVAILABILITY FOR AUGUST 17, 2009

ARUGULA & CILANTRO	A light volume of fair to good quality product due to disrupted planting schedules and hot temps. Supply will ramp up in a few weeks.
BABY ARUGULA	Weather interrupted planting schedules still causing light to inconsistent quantity of good quality arugula.
BASIL	Likes warmer weather. Harvesting good quality & quantity.
BEETS	Harvesting good quality in fair quantity.
CABBAGE	Harvesting a light volume of excellent quality in this heat. Excellent sizing. Supply should start to pick up in a few weeks.
COLLARDS	Harvesting good quality and quantity.
CUCUMBERS	Harvesting very light quantities of good product as we're between plantings right now. Supply should start to ramp up in a few weeks.
DANDELIONS	A fair to good quantity of very good quality Spring planted product.
DILL	Harvesting a light volume in fair to good quality.
EGGPLANT & PEPPERS	Harvesting good quality products in good supply.
KALE	A fair to good quantity of good quality product.
LEEKs	A fair volume of good quality product is available.
MINT	Good quality harvesting in good quantity. Likes warmer temperatures.
NECTARINES	The Fantasia variety is in good supply, with volume through the end of the month. Excellent size and quality.
PARSLEY	Very light quantities of fair to good quality curly and plain. Supply should start to increase in a few weeks.
PEACHES	Finishing up Bounty yellow varieties while Cresthaven varieties begin. Klondike and Snow Giant variety white peaches are now harvesting. All are in good volume now and through mid-September. All varieties have excellent size and quality.
SQUASH	Harvesting good quantities of very good quality product.
SWEET CORN	Supply gap. Harvesting only a fair quantity of good quality corn due to disrupted planting schedules in early June. Quantity will be off from normal for a couple of weeks.
SWISS CHARD	Harvesting fair to good quality in light volume. Supply should start to increase in a few weeks.
TOMATOES	Supply gap. Harvesting a light quantity of fair to good quality fruit due to disrupted planting schedules in June and recent substantial rains which have caused some quality and field problems. Volume will be off from normal for several weeks due to these problems.
TURNIPS	Minimal supply with the heat that it doesn't like. Be back in the Fall.
WHITE POTATOES	Harvesting mainly round white varieties, with some Yukon Gold, Redskin varieties, and a bit of Russets as well.

Topsoil/Subsoil v Rainfall Relation(NJ)



Topsoil Moisture



Pasture and Range Condition

