



**Agricultural Weather Advisory For New Jersey  
And Southeastern Pennsylvania  
Issued By Rutgers University  
New Brunswick, NJ  
8 am EDT Monday, October 5, 2009**

Rainfall amounts none through Tuesday, quarter of an inch Tuesday night. Winds for spraying west 10 to 15 mph today, north 5 mph tonight, southeast 5 to 10 mph Tuesday.

Relative humidity in percent 35 to 45 today, 90 to 100 tonight, 35 to 45 Tuesday. Dew points 40 to 45 through Tuesday then increasing late Tuesday. Drying conditions good today, good Tuesday. Heavy dew tonight, little dew but wetting in precipitation likely Tuesday night. Percent of possible sunshine 90 today, 80 Tuesday.

There is a near zero percent probability of precipitation during the 12 hour period beginning at 8 am and ending at 8 pm. Rainfall could adversely affect the performance of pesticides that require a rain-free period after application.

Temperatures in the representative cranberry bog could fall to 26 to 30 tonight but should remain above freezing Tuesday night due to clouds and precipitation.

Late season hay cutting should be good today and Tuesday but then with rain moving in Tuesday night and into Wednesday. Drier weather should return for Thursday and Friday.

The latest 8 to 14 day outlook for the period October 12, 2009 to October 18, 2009 is calling for temperatures to average below normal and precipitation to average above normal.

**Climate summary for the week ending 8am 10/5/09**

Temperatures averaged near normal, averaging 56 degrees north, 58 degrees central, and 61 degrees south. Extremes were 80 degrees at Hammonton on October 5, 2009 and 37 degrees at Charlotteburg and Newton on October 3, 2009.

Weekly rainfall averaged 0.28 inches north, 0.45 inches central, and 0.44 inches south. The heaviest 24 hour total reported was 1.17 inches at Pomona on October 3, 2009 to October 4, 2009.

Estimated soil moisture, in percent of field capacity, this past week averaged 89 percent north, 95 percent central, and 89 percent south.

Four inch soil temperatures averaged 57 degrees north, 61 degrees central, and 63 degrees south.

**Cranberry Harvest Well Underway**

Days suitable for field work, for the week ending Sunday, October 4, 2009, were 6.5. Topsoil moisture was rated as 85% adequate and 15% surplus. Subsoil moisture was rated as 90% adequate and 10% surplus. There were measurable amounts of rainfall during the week in all localities. Temperatures were variable across the Garden State. Corn harvested for grain was well underway as conditions rated mostly good. Silage harvest continued. Full-season soybean harvest progressed while double-cropped soybeans are in the leaf dropping stage. Final hay-cuttings continued where weather permitted. Sweet potato harvest progressed. Producers prepared for fall-vegetable harvest. Disease pressure was high for vine crops due to excessive moisture. The main harvest of cranberries is underway. Apple harvest continued for late season varieties.

**Weather Summary for the Week Ending Monday, October 5, 2009**

Weather Stations	Rainfall			Temperatures Last Week				Growing Degree Days <sup>1</sup>		Soil Moisture <sup>2</sup>
	Last Week	Since March 1		Max. Degree s	Min. Degrees	Avg. Degrees	Dept.* Degrees	Total	Dept.*	
	Inches	Total Inches	Dept.* Inches					Base 50° F	Base 50° F	Percent
<b>North</b>										
Belvidere Bridge	0.09	28.70	-0.31	73	39	55	-2	2,639	-4	90
Canoe Brook <sup>3</sup>	0.37	30.50 <sup>3</sup>	-0.02 <sup>3</sup>	78	38	57	0	2,846 <sup>3</sup>	187 <sup>3</sup>	90
Charlotteburg <sup>3</sup>	0.51	23.88 <sup>3</sup>	-7.00 <sup>3</sup>	73	37	56	2	2,535 <sup>3</sup>	437 <sup>3</sup>	90
Flemington	0.30	34.25	5.15	74	38	56	-1	2,868	142	87
Newton <sup>3</sup>	0.14	28.04 <sup>3</sup>	-0.30 <sup>3</sup>	72	37	55	1	2,571 <sup>3</sup>	217 <sup>3</sup>	79
<b>Central</b>										
Freehold	0.47	29.98	1.73	77	38	58	-1	3,040	126	93
Long Branch	0.35	31.78	3.18	74	40	58	-2	2,886	26	88
New Brunswick	0.36	33.44	4.71	78	38	58	-1	3,099	54	94
Toms River	0.68	32.62	3.33	75	38	59	0	3,009	152	95
Trenton	0.40	37.35	10.21	75	42	59	-1	3,218	47	83
<b>South</b>										
Cape May C.H.	0.68	32.77	7.38	75	39	59	-4	3,071	138	97
Downstown	0.11	28.67	2.12	79	40	60	-1	3,205	10	80
Glassboro	0.28	34.78	6.78	77	45	61	1	3,393	240	78
Hammonton	0.16	31.71	3.77	80	40	61	1	3,447	288	78
Pomona	1.24	37.48	12.31	77	40	61	2	3,342	408	95
Seabrook <sup>3</sup>	0.15	28.67 <sup>3</sup>	3.00 <sup>3</sup>	80	44	61	0	2,984 <sup>3</sup>	-232 <sup>3</sup>	76
South Harrison <sup>3</sup>	NA	NA	NA	NA	NA	NA	NA	NA	NA	NA

\* Departure from normal.

<sup>1</sup> Growing degree days since March 1, 2009, total and departure from normal or long term average.

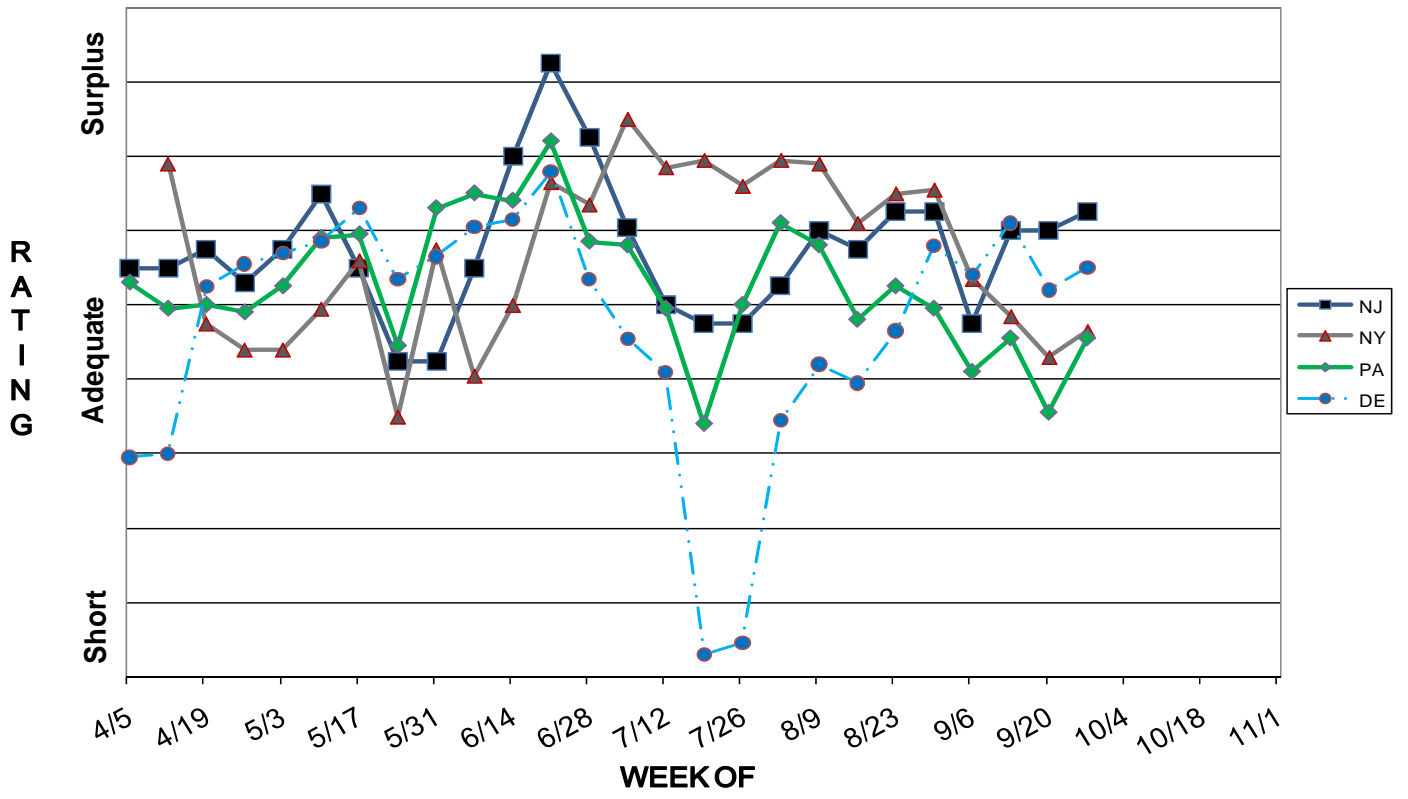
<sup>2</sup> Estimated soil moisture as % of field capacity based on climate data.

<sup>3</sup> Data not available for all historic comparisons.

**JERSEY FRESH AVAILABILITY FOR OCTOBER 5, 2009**

<b>APPLES</b>	Fresh apples available thru December. Red Delicious, Empire, Jonagold, & McCoun finishing. Golden Delicious, Rome, & Stayman/Winesap starting. Braeburn, Fuji, & Granny Smith starting mid to late month. Cider available until Christmas in wholesale volume, thru late Spring for retail sales.
<b>ARUGULA &amp; CILANTRO</b>	A fair volume of good quality products.
<b>BASIL &amp; MINT</b>	Like warmer weather so harvesting good quality product in light to decreasing volume.
<b>BEETS</b>	Harvesting good quality in fair to good quantity.
<b>CABBAGE</b>	Harvesting a fair to good volume of very good quality with excellent sizing.
<b>COLLARDS</b>	Harvesting good quality and quantity.
<b>CRANBERRIES</b>	The main harvest of great quality fresh market dry harvested berries started last week with an excellent harvest volume expected.
<b>CUCUMBERS</b>	Harvesting light quantities of good quality cukes & pickles.
<b>DANDELIONS</b>	A fair quantity of very good quality product.
<b>DILL</b>	Harvesting a light to fair volume in good quality.
<b>EGGPLANT &amp; PEPPERS</b>	Harvesting good quality products in fair to decreasing supply.
<b>ESCAROLE &amp; ENDIVE</b>	Harvesting in fair volume and good quality.
<b>KALE</b>	A fair to good quantity of good quality product.
<b>LEEKS &amp; GR. ONIONS</b>	A fair volume of good quality product is available.
<b>LETTUCES</b>	Harvesting a fair volume of very good quality Boston, Romaine, & Red & Green Leaf.
<b>PARSLEY</b>	Fair quantities of good quality curly and plain.
<b>SPINACH</b>	Harvesting good quality in light to fair volume.
<b>SQUASH</b>	Harvesting fair to decreasing quantities of very good quality Yellow and Green. Acorn and Butternut are harvested into storage and awaiting sale.
<b>SWEET CORN</b>	Harvesting a light to decreasing quantity of good quality corn until frost. Expect increased quality variations in the marketplace due to the annual cycle of insect pressures and cool overnight temperatures slowing ripening.
<b>SWEET POTATOES</b>	Harvesting excellent quality potatoes in good volume.
<b>SWISS CHARD</b>	Harvesting fair to good quality in fair volume.
<b>TOMATOES</b>	Harvest volume is off due to season long field problems and low prices. Harvesting a very light quantity of fair to good quality fruit until frost.
<b>RADISHES &amp; TURNIPS</b>	Light to increasing volume. These temperature sensitive vegetables are starting to increase in supply with cooler temperatures.
<b>WHITE POTATOES</b>	Harvesting mainly round white varieties, with some Yukon Gold, Redskin varieties, and a bit of Russets as well.

### TOPSOIL MOISTURE



### PASTURE AND RANGE CONDITION

