



**Agricultural Weather Advisory For New Jersey
 And Southeastern Pennsylvania
 Issued By Rutgers University
 New Brunswick, NJ
 8 am EDT Tuesday, October 13, 2009**

Rainfall amounts less than a tenth of an inch this morning otherwise none through Wednesday. Winds for spraying west then northwest increasing to 15 to 20 mph today, north 10 to 15 mph tonight, north 5 to 10 mph Wednesday.

Relative humidity in percent 35 to 45 this afternoon, 90 to 100 tonight, 35 to 45 Wednesday. Dew points dropping from near 50 this morning to 30 to 35 by later today and remaining there through Wednesday. Drying conditions becoming good this afternoon, good Wednesday. Light dew tonight due to wind, heavy dew with some scattered frost possible Wednesday night if clouds are slow to move into the area. Percent of possible sunshine 30 today, 60 Wednesday.

There is a 20 percent probability of precipitation during the 12 hour period beginning at 8 am and ending at 8 pm that could adversely affect the performance of pesticides that require a rain-free period after application.

Temperatures in the representative cranberry bog could drop to 26 to 30 if winds subside tonight, temperatures will probably remain above freezing Wednesday night with cloud cover.

Late season hay cutting will see fairly good drying today and Wednesday but then with an increasing threat of rain Thursday and Friday.

The latest 8 to 14 day outlook for the period October 20, 2009 to October 26, 2009 is calling for temperatures to average near normal and precipitation to average near normal.

Climate summary for the week ending 8am 10/12/09

Temperatures averaged near normal north and central and above normal south, averaging 55 degrees north, 58 degrees central, and 60 degrees south. Extremes were 80 degrees at numerous locations on October 10, 2009, and 34 degrees at Belvidere on October 12, 2009.

Weekly rainfall averaged 0.51 inches north, 0.08 inches central, and 0.08 inches south. The heaviest 24 hour total reported was 0.70 inches at Canoe Brook on October 9, 2009 to October 10, 2009.

Estimated soil moisture, in percent of field capacity, this past week averaged 81 percent north, 75 percent central, and 57 percent south.

Four inch soil temperatures averaged 55 degrees north, 58 degrees central, and 60 degrees south.

Corn and Soybean Harvest Progress

Days suitable for field work, for the week ending Sunday, October 11, 2009, were 7.0. Topsoil moisture was rated as 90% adequate and 10% surplus. Subsoil moisture was rated as 95% adequate and 5% surplus. There were measurable amounts of rainfall during the week in most localities. Temperatures were above normal across the Garden State. Conditions were mostly good for corn and soybeans as harvesting progressed throughout the week. Corn harvested for silage continued. Producers began planting wheat. Vegetable harvest continued winding down for eggplant, peppers, and tomatoes. Fall varieties of spinach, snap beans, cabbage, and lettuce harvesting progressed. Cranberries approached mid-harvest with conditions rated mostly good. Apple harvest continued for late season varieties. Other activities included hay work, field maintenance, and cover crop establishment.

Weather Summary for the Week Ending Monday, October 12, 2009

Weather Stations	Rainfall			Temperatures Last Week				Growing Degree Days ¹		Soil Moisture ²
	Last Week	Since March 1		Max.	Min.	Avg.	Dept.*	Total	Dept.*	
	Inches	Inches	Inches					Degrees	Degrees	Degrees
North										
Belvidere Bridge	0.56	29.26	-0.53	67	34	54	0	2,667	-13	82
Canoe Brook ³	0.96	31.46 ³	0.11 ³	72	35	57	3	2,895 ³	198 ³	94
Charlotteburg ³	0.42	24.30 ³	-7.52 ³	66	35	54	2	2,568 ³	449 ³	79
Flemington	0.16	34.41	4.53	70	35	55	0	2,906	140	76
Newton ³	0.45	28.49 ³	-0.61 ³	64	35	53	1	2,597 ³	224 ³	79
Central										
Freehold	0.11	30.09	1.05	77	38	58	2	3,097	127	78
Long Branch	0.11	31.89	2.48	74	40	58	1	2,944	31	58
New Brunswick	0.01	33.45	3.97	78	37	58	1	3,156	55	82
Toms River	0.04	32.66	2.49	77	38	59	2	3,076	167	65
Trenton	0.12	37.47	9.66	78	41	59	1	3,279	47	65
South										
Cape May C.H.	0.14	32.91	6.81	79	40	59	-1	3,137	125	50
Downstown	0.06	28.73	1.46	80	37	59	1	3,268	7	46
Glassboro	0.08	34.86	6.09	80	44	60	3	3,461	248	57
Hammonton	0.05	31.76	3.08	80	38	60	3	3,520	303	36
Pomona	0.09	37.57	11.71	79	40	60	3	3,416	427	73
Seabrook ³	0.07	28.74 ³	2.33 ³	80	42	60	2	3,059 ³	-224 ³	48
South Harrison ³	0.05	24.31 ³	-3.82 ³	80	47	61	NA	NA	NA	NA

* Departure from normal.

¹ Growing degree days since March 1, 2009, total and departure from normal or long term average.

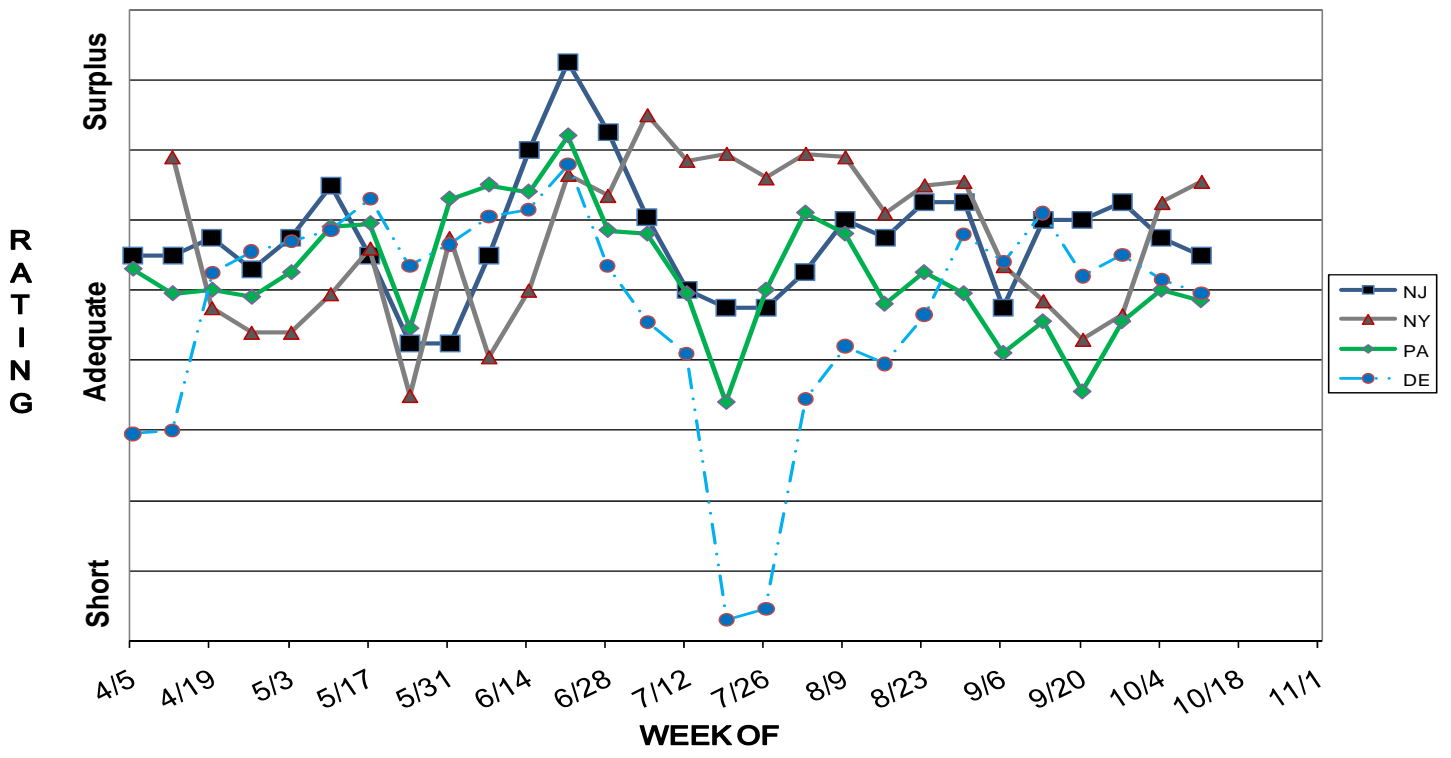
² Estimated soil moisture as % of field capacity based on climate data.

³ Data not available for historic comparisons.

JERSEY FRESH AVAILABILITY FOR OCTOBER 14, 2009

APPLES	Fresh apples available thru December. Red Delicious, Empire, Jonagold, & McCoun in storage. Golden Delicious, Rome, & Stayman/Winesap picking. Braeburn, & Fuji starting & Granny Smith within the week or so. Cider available until Xmas in wholesale volume, thru late Spring for retail sales.
ARUGULA & CILANTRO	A fair volume of good quality products.
BASIL & MINT	Like warmer weather so harvesting good quality product in light to decreasing volume. Available until frost.
BEETS	Harvesting good quality in fair to good quantity. Available thru Thanksgiving.
CABBAGE	Harvesting a fair to good volume of very good quality with excellent sizing. Available through Thanksgiving.
COLLARDS	Harvesting good quality and quantity. Likes the cooler weather.
CRANBERRIES	The main harvest of great quality fresh market dry harvested berries started last week with an excellent harvest volume expected.
CUCUMBERS	Harvesting very light quantities of good quality cukes & pickles. Finishing.
DANDELIONS	A fair quantity of very good quality product.
DILL	Harvesting a light to fair volume in good quality.
EGGPLANT & PEPPERS	Harvesting good quality products in light to decreasing supply.
ESCAROLE & ENDIVE	Harvesting in fair volume and good quality.
KALE	A fair to good quantity of good quality product. Available thru Thanksgiving.
LEEK & GR. ONIONS	A fair volume of good quality product is available.
LETTUCES	Harvesting a fair volume of very good quality Boston, Romaine, & Red & Green Leaf.
PARSLEY	Fair quantities of good quality curly and plain.
SPINACH	Harvesting good quality in light to fair volume.
SQUASH	Harvesting fair to decreasing quantities of very good quality Yellow and Green. Finishing up. Acorn and Butternut are harvested, cured into storage, & awaiting sale.
SWEET CORN	Harvesting a decreasing quantity of good quality corn until frost. Finishing up. Expect increased quality variations in the marketplace due to the annual cycle of insect pressures and cool overnight temperatures slowing ripening.
SWEET POTATOES	Harvesting excellent quality potatoes in good volume.
SWISS CHARD	Harvesting fair to good quality in fair volume.
TOMATOES	Harvest volume is off due to season long field problems and low prices. Harvesting a very light quantity of fair to good quality fruit until frost. Finishing up.
RADISHES & TURNIPS	Light to fair volume. These temperature sensitive vegetables are starting to increase in supply with cooler temperatures.
WHITE POTATOES	Harvesting mainly round white varieties, with some Yukon Gold, Redskin varieties, and a bit of Russets as well.

TOPSOIL MOISTURE



PASTURE AND RANGE CONDITION

