

NEW MEXICO DEPARTMENT OF AGRICULTURE

New Mexico State University
University Park, New Mexico

DALLAS RIERSON, Director

COOPERATING WITH
UNITED STATES DEPARTMENT OF AGRICULTURE
Statistical Reporting Service
Field Operation Division

COMPILED BY
NEW MEXICO CROP AND LIVESTOCK
REPORTING SERVICE

Joe D. Herman — Agricultural Statistician in Charge
Larry Losleben — Agricultural Statistician
Robert L. Todd — Agricultural Statistician
Robert L. Roebuck — Agricultural Statistician
Wayne Weaver — Agricultural Statistician
Hazel M. Hobbs — Supervisory Statistical Assistant

142 S. Water Street
P. O. Drawer 580
Las Cruces, New Mexico 88001

New Mexico Agricultural Statistics

TABLE OF CONTENTS

	Pages
FOREWORD	2
WHY CROP REPORTS	3
CLIMATE OF NEW MEXICO	4
PRECIPITATION: NEW MEXICO AND EASTERN PLAINS 1931 TO 1964	5
CROP SUMMARY, 1964	6-7
CROP SUMMARY TABLE 1963, 1964 AND 5-YEAR AVERAGE	8
FARM INCOME, TABLES	9
LIVESTOCK SUMMARY, JANUARY 1, 1965	38
NEW MEXICO OUTSHIPMENTS OF CATTLE 1964	39
CROP AND LIVESTOCK REPORTS	55
STATE TABLES	
CROPS	11
LIVESTOCK	40-46
COUNTY ESTIMATES	
GRAINS:	
Wheat	12-13
Sorghum	14-15
Corn	16-17
Oats	18-19
Barley	20-21
MISCELLANEOUS CROPS:	
Cotton	22-25
Hays	26-27
Alfalfa Seed	27
Broomcorn	28
Potatoes	29
Sweetpotatoes	29
Peanuts	29
Dry Beans	30-31
VEGETABLES:	
Lettuce	33
Tomatoes	34
Carrots	35
Cantaloups	35
Onions	36
FRUIT:	
Apples	36
LIVESTOCK:	
Cattle on Feed	47
Sheep on Feed	47
Cattle	48-49
Milk Cows	48-49
Hogs	48-49
Sheep	48-49
Chickens	48-49
VALUE OF CROP PRODUCTION AND LIVESTOCK INVENTORY VALUE:	
Individual and Total Value of Principal Crops	50-51
Livestock Inventory Values by Species, January 1, 1965	52-53

FOREWORD

New Mexico agriculture is faced with keeping in step with new requirements and needs of the consumer. In addition, allied industries must keep pace with changes in agriculture to meet its needs in order to adequately provide food and fiber to the people of this country and the world.

To assist all concerned, we take pride in presenting Volume IV of New Mexico Agricultural Statistics, bringing up to date agricultural production by counties and production values of the major crops of New Mexico.

This work is a cooperative program of the New Mexico Department of Agriculture and the Statistical Reporting Service of the United States Department of Agriculture and is partially financed through matching funds of the Research and Marketing Act of 1946.



Dallas Rierson, Director

New Mexico Department of Agriculture

WHY CROP AND LIVESTOCK REPORTS

A man's judgment is no better than his facts and crop reports are the basic facts of Agriculture.

They aid farmers in planning their production and marketing.

They are essential in enacting wise legislation affecting Agriculture.

They are the basis for analysis of agriculture and other business conditions.

They enable railroads to make a better distribution of cars for moving farm products.

They give producers the same foresight to future price trends that organized dealers possess.

They are a check on fluctuation in price. Uncertainty of supply promotes undue fluctuation in price.

They are indispensable in times of war because food is as essential as ammunition and weapons of war.

They are the best basis for adjusting supply to demand which is highly essential if maximum price is to prevail.

They aid farm organizations, schools and others in planning constructive programs, and the prospective purchaser of land.

They give information on surplus and deficit areas of production making possible a more economical distribution of products.

They eliminate the ill effects of misleading reports that might be circulated for private gain, if there were no official reports.

They are a guide to farm resources and for developing new resources such as irrigation, electric power, location of food processing and other factories.

They reduce the amount of speculation in farm products. Speculation thrives on uncertainty. Unbiased official crop reports reduce uncertainty which limits speculation.

They indicate potential buying power thereby enabling the manufacturer to meet the probable demand. With economical production and distribution, the manufacturer can sell at a lower price than he could with uncertain demand.

They reduce the risk of ownership of buyers of farm products which enables them to do business on a smaller margin. Under the stimulus of competition, they pay producers higher prices than could be paid if uncertainty of production existed. They provide an accurate, unbiased picture of New Mexico's agriculture. The facts on present and prospective supplies furnish a sound basis for judgment and action by farmers, other individuals, business men, railroads, crop and livestock interests and governmental agencies.

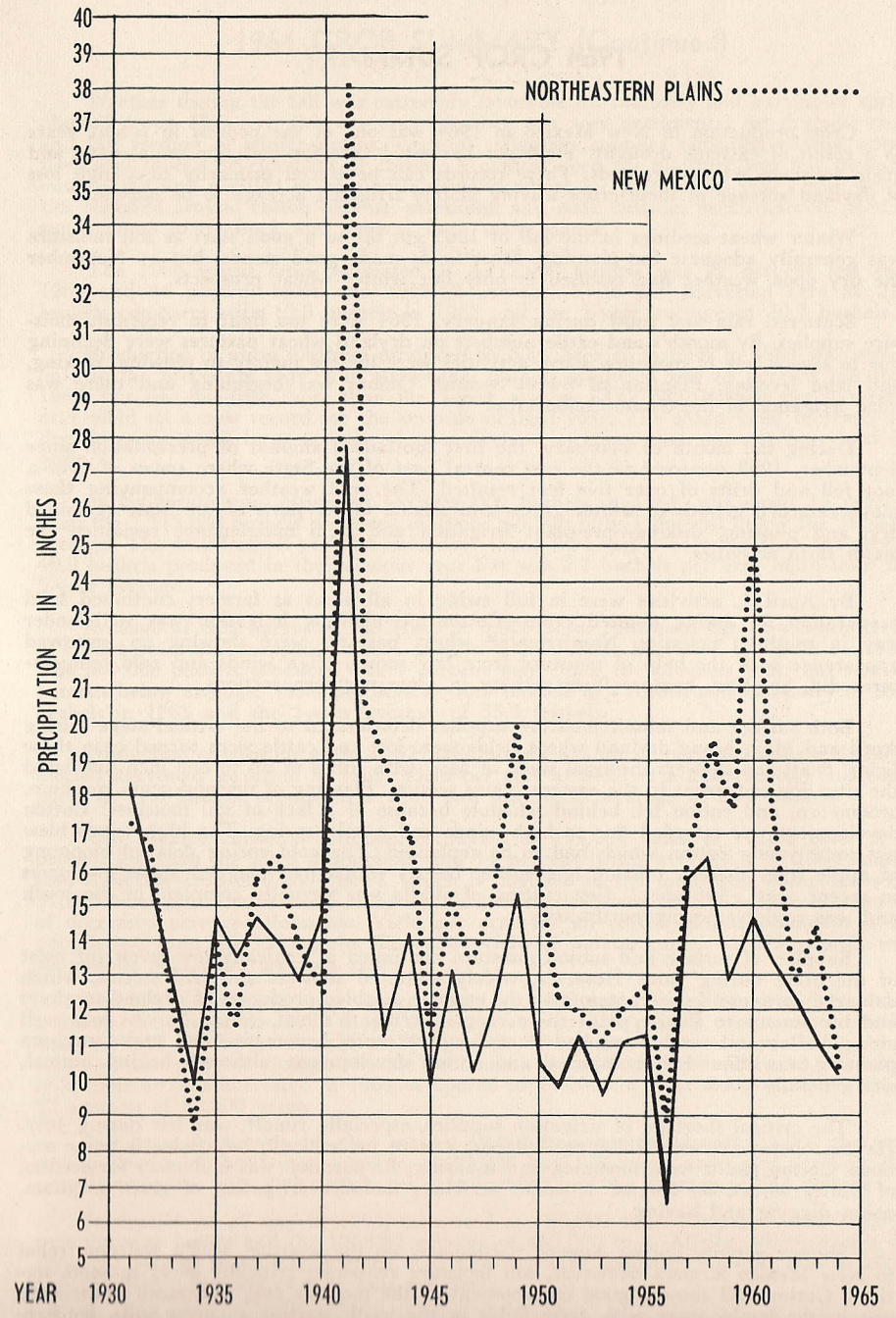
New Mexico Agricultural Statistics

CLIMATE OF NEW MEXICO: Average first fall and last spring date of 32 degrees, days between dates, record average, precipitation 1963-1964

County and Station	Freeze data years of record	Average first date of 32 degrees	Average last spring date of 32 degrees	Average number of days between dates	Precipitation-Inches		
					Average for period of record through 1964	1963	1964
Years	Date	Date	Days	Inches			
Bernalillo	71	Oct. 26	Apr. 17	192	8.13	7.47	7.44
Abuquerque							
Sandeval							
Jemez Springs	51	Oct. 22	May 1	174	17.68	13.94	13.50
San Juan							
Shiprock	33	Oct. 14	May 1	166	6.79	0	7.62
Aztec Ruins Natl. Monument	50	Oct. 10	May 12	151	9.82	6.87	8.17
Santa Fe							
Santa Fe	86	Oct. 15	May 5	163	13.76	14.18	13.35
Taos							
Teos	61	Oct. 3	May 16	140	12.08	8.66	10.66
Valencia							
Los Lunas	62	Oct. 18	Apr. 23	178	7.87	6.34	6.34
San Fidel	38	Oct. 13	May 6	160	9.63	8.10	7.72
Colfax							
Raton	19	Sept. 28	May 9	142	14.75	10.65	10.34
Springer	66	Oct. 6	May 8	151	15.59	13.87	9.64
Curry							
Clovis	49	Oct. 28	Apr. 16	195	17.48	18.23	12.06
Melrose	20	Oct. 24	Apr. 17	190	15.13	16.11	11.19
De Baca							
Ft. Sumner	50	Oct. 23	Apr. 18	188	13.74	12.92	8.45
Alamogordo Dam	24	Oct. 29	Apr. 16	196	12.50	14.61	6.10
Guadalupe							
Santa Rosa	52	Oct. 25	Apr. 17	191	13.92	10.02	7.40
Quay							
Tucumcari	57	Oct. 27	Apr. 15	195	15.07	15.22	10.28
Obar	35	Oct. 21	Apr. 18	186	15.80	14.99	16.28
San Jon	55	Oct. 25	Apr. 22	186	15.18	12.80	10.42
Roosevelt							
Portales	50	Oct. 19	Apr. 22	180	16.94	17.11	10.56
Elida	22	Oct. 29	Apr. 17	195	15.09	8.07	10.83
San Miguel							
Las Vegas	68	Oct. 8	May 8	153	15.94	13.56	9.21
Bell Ranch	58	Oct. 21	Apr. 20	184	14.52	12.79	9.72
Torrance							
Estancia	42	Oct. 2	May 19	136	11.87	9.24	7.76
Union							
Clayton	56	Oct. 20	Apr. 26	177	14.51	12.86	8.93
Des Moines	46	Oct. 4	May 14	143	17.91	12.71	13.15
Catron							
Quemado	33	Sept. 23	June 7	108	10.40	11.65	12.54
Grant							
Ft. Bayard	64	Oct. 24	Apr. 27	180	14.41	13.45	12.30
Hidalgo							
Lordsburg	36	Nov. 4	Apr. 3	215	10.10	9.96	10.51
Animas	34	Oct. 29	Apr. 23	189	9.99	12.25	10.00
Luna							
Deming	66	Nov. 2	Apr. 4	212	8.84	6.30	6.30
Hachita	45	Nov. 5	Apr. 10	209	9.54	----	14.35
Sierra							
Caballo Dam	26	Nov. 5	Apr. 3	216	8.46	5.74	6.94
Winston	16	Oct. 10	May 15	148	12.14	11.63	11.08
Hillsboro	20	Oct. 30	Apr. 16	197	10.98	7.80	9.53
Socorro							
Socorro	66	Oct. 24	Apr. 10	197	8.75	6.56	6.78
Augustine	31	Sept. 27	May 28	122	10.51	7.62	8.20
Chaves							
Roswell	69	Oct. 30	Apr. 7	206	11.62	6.30	6.98
Elk	51	Oct. 17	Apr. 30	170	15.84	15.77	8.84
Dona Ana							
State University	71	Oct. 28	Apr. 9	202	8.01	6.11	3.63
Hatch	49	Oct. 24	Apr. 10	197	8.94	7.06	4.81
Eddy							
Carlsbad	66	Nov. 5	Apr. 3	216	12.45	10.16	4.47
Artesia	54	Oct. 28	Apr. 13	198	11.33	5.95	5.15
Lea							
Lovington	39	Nov. 1	Apr. 12	203	14.89	12.43	8.31
Jal	21	Oct. 31	Apr. 5	209	11.35	10.32	6.14
Lincoln							
Ft. Stanton	64	Oct. 8	May 7	154	15.37	8.87	9.78
Corona	49	Oct. 15	May 4	164	15.87	10.66	11.81
Otero							
Alamogordo	45	Nov. 5	Apr. 6	213	9.80	8.42	6.74
Clouderoff	60	Sept. 30	May 17	136	25.74	24.44	21.13

Source: U. S. Department of Commerce, Weather Bureau State Climatologist, Albuquerque, New Mexico.

New Mexico Agricultural Statistics



AVERAGE ANNUAL PRECIPITATION, NEW MEXICO AND MAJOR DRYLAND FARMING AREA, 1931 - 1964

1964 CROP SUMMARY

Crop production in New Mexico in 1964 was one of the poorest in recent years as a result of extreme drought. Yield per harvested acre for corn for grain, oats, and grain sorghum set new records. These records can be traced primarily to a high loss of dryland acreage of these crops leaving mainly irrigated acreage to be harvested.

Winter wheat seedings in the fall of 1963 got off to a good start as soil moisture was generally adequate for planting. Most fields made good stands, but by November the dry open weather had resulted in only fair winter wheat prospects.

Scattered rain and snow during January, 1964 were too light to replenish moisture supplies. By month's end cattle numbers on dryland wheat pastures were declining due to severe lack of moisture. Farm activities were limited mainly to plowing, disking, and land leveling. Planting of Sweet Spanish Onions was beginning and there was some irrigation of the Grano Onion crop.

During the month of February, the first substantial amount of precipitation since September, 1963 occurred in the east central part of the State where snows of over a foot fell and drifts of over five feet resulted. The cold weather accompanying these snows retarded growth of winter grains and alfalfa. Other parts of the State remained dry, and plowing, disking, pre-plant irrigation and farm maintenance remained the major farm activities.

By April 1, activities were in full swing in all areas as farmers continued land preparation for spring planted crops. Cotton pre-planting irrigation was well under way in southern counties. Non-irrigated wheat pastures were showing an improved appearance with the help of moisture from late snows. High winds and cold temperatures did, however, hamper farm activity in some northern sections.

Both surface and subsoil moisture supplies deteriorated to the critical stage during April and May. Many dryland wheat fields were lost and cattle were turned onto those fields. Scattered showers the final week of May with totals of up to one inch alleviated the situation somewhat in the eastern plains section. Planting of dryland grain sorghum, broomcorn, and cotton fell behind schedule because of a lack of soil moisture. Cotton development was retarded due to high winds and a cold spring. The high winds blew out some young cotton which had to be replanted. The cold spring delayed blooming of apple trees thereby missing late spring freezes which had plagued apple producers in recent years. By June 1, first cutting of alfalfa was virtually complete in the south and was rapidly moving northward.

Supplies of surface and subsoil moisture continued at critically low levels for most of the State during June. However, widely scattered showers and hail storms, which damaged cotton and sweetpotatoes on the eastside, enabled producers of dryland sorghum and broomcorn to finally plant these crops. At month's end, wheat harvest was well along, barley and oat harvest had started in the south, broomcorn and grain sorghum planting was about half completed and cotton development, although behind normal, was generally good.

The critical shortage of irrigation supplies, especially runoff, was felt during July. Haying operations were halted and livestock were turned onto hay fields in some sections. Cotton plants were blooming and squaring. Preparation was underway for seeding of winter wheat. By August 1, major activities included irrigation of grain sorghum, onion digging and haying.

Shower activity during August, particularly on the westside, was a welcome relief to New Mexico farmers. However, soil moisture remained critically short in most sections. Cotton still showed good development at the month's end, and most of the crop was in the lay-by stage with early fields in the south starting to open bolls. By September 1, major activities were irrigation and field checking of cotton, haying, broomcorn pulling, lettuce thinning and harvest of a record apple crop.

1964 CROP SUMMARY (Continued)

Weather during the fall was extremely favorable for maturity and harvest of spring planted crops. However, this dry open weather was very detrimental for dryland crops and fall seeding of winter grains. Lack of irrigation supplies curtailed haying operations and slowed development of cotton. A critical need for moisture was felt throughout the fall and resulted in very little dryland wheat for pasture. At year's end, activities centered around cotton harvest, shredding and stalk cutting, pecan harvest, feeding supplements to livestock and general farm maintenance.

The 1964 wheat crop, estimated at 2,772,000 bushels was 27 percent less than 1963 and 44 percent below the 1958-62 average. Yield per harvested acre at 21.0 bushels compares with 19.0 bushels in 1963 and the 5-year average of 20.7 bushels.

Production of grain sorghum produced by New Mexico farmers in 1964 was second only to the preceding year. The 10,664,000 bushels produced was 14 percent less than 1963, but was one-fifth more than the 5-year average. The 62.0 bushels per harvested acre yield set a new record for the seventh straight year. The sharp yield increase was due, in part, to the large acreage of poor dryland sorghum that was not harvested for grain.

Barley production, estimated at 1,496,000 bushels in 1964, was down 13 percent from the 1,715,000 bushels produced in 1963, but was only 1 percent below the 1958-62 average. The 44.0 bushels per harvested acre was 5 bushels per acre less than the record 49.0 bushels produced in the previous year but was 2.2 bushels per acre more than the 5-year average.

Acreage of oats harvested for grain at 6,000 acres continued the downward trend of recent years and compares with a peak of 61,000 acres harvested for grain in 1920. The 300,000 bushels produced was 7 percent more than the previous year, but was 22 percent below average. Yield per acre at 50.0 bushels is a record and compares to 35.0 bushels in 1963 and the 5-year average of 33.6 bushels.

Production of corn for grain at 627,000 bushels was up 27 percent from the 492,000 bushels harvested for grain in 1963. Yield per acre at 57.0 set a new record. This compares to 41.0 bushels produced in 1963 and the 5-year average of 35.0 bushels.

New Mexico cotton production, estimated at 257,000 bales, is 14,000 bales or 5 percent less than the 1963 production, and 14 percent below average. The 1964 American Egyptian crop of 23,000 bales, which is included in the total crop, compares with 31,200 bales produced in 1963. This was 26 percent less than the 1963 crop, as a result of decreased acreage allotments. Yield per acre for all cotton at 655 pounds was 27 pounds less than the 1963 yield. The 1964 yield of upland cotton at 675 pounds was 36 pounds below the previous year.

The 1964 broomcorn crop was estimated at 2,100 tons. Production was only about a fourth the size of the 1963 crop. Yield per acre at 280 pounds compares, with 370 last year and the 5-year average of 304 pounds. The sharp decrease in production is a result of the extreme drought in the broomcorn producing areas. Only 15,000 acres of broomcorn was harvested in 1964 compared to 44,000 the year before and the 1958-62 average of 38,800 acres.

Dry bean production in 1964 totaled 42,000 bags compared with 53,000 the preceding year and the 5-year average of 82,000 bags. Average yield per acre of 700 pounds compares with 880 pounds per acre in 1963 and the average of 614 pounds.

Production of all hay in 1964, estimated at 760,000 tons, compares with 795,000 tons the year before and the 1958-62 average of 685,000 tons. Alfalfa, which makes up about 90 percent of all hay, yielded 4.10 tons per acre compared to 4.50 tons in 1963 and the 5-year average of 3.94 tons per acre.

Total value of major crops harvested in New Mexico, estimated at 109 million dollars was 8 percent less than the value of production in 1963. Cotton, all hay and grain sorghum continue as the three leading income producers. Value of cotton and cottonseed represents 49 percent of the total value of all major crops.

PRINCIPAL CROPS: Acreage, yield, production, price, value, average 1958-62, annual 1963 and 1964

New Mexico Agricultural Statistics

Commodity	Unit	Acreage harvested			Yield per acre			Production			Season average price		Value of production	
		Average 1958-62	1963	1964 ¹	Average 1958-62	1963	1964 ¹	Average 1958-62	1963	1964 ¹	1963	1964 ¹	1963	1964 ¹
		Thous. acres			See unit column			Thousand			Dollars		Thous. dollars	
GENERAL CROPS														
Corn for grain	Bu.	18	12	11	35.0	41.0	57.0	618	492	627	1.36	1.38	669	865
Corn for silage	Tons	12	15	17	13.7	15.0	16.5	163	225	280	---	---	---	---
Corn for forage	Tons	---	4	4	---	---	---	---	---	---	---	---	---	---
All wheat	Bu.	234	200	132	20.7	19.0	21.0	4921	3800	2772	1.89	1.45	7182	4019
Oats	Bu.	11	8	6	33.6	35.0	50.0	383	280	300	1.07	.90	244	270
Barley	Bu.	36	35	34	41.8	49.0	44.0	1515	1715	1496	1.80	.99	1715	1481
Sorghum grain	Bu.	218	235	172	41.7	53.0	62.0	8881	12455	10664	1.03	1.10	12829	11730
Sorghum silage	Tons	20	23	24	10.6	15.0	13.0	215	345	312	---	---	---	---
Sorghum forage	Tons	58	65	59	1.86	2.00	1.50	107	130	88	23.00	23.50	2990	2068
Broomcorn	Lbs.	39	44	15	304	370	280	5960 ²	8100 ²	2100 ²	375.00	375.00	3038	788
Cotton lint	Lbs.	195	190	188	732	682	655	297 ³	271 ³	257 ³	3474	345	46805	44120
Cottonseed	Tons	---	---	---	---	---	---	122	112	106	56.10	50.40	6283	5342
Beans, dry	Lbs.	13	6	6	614	880	700	82 ⁴	53 ⁴	42 ⁴	6.30	8.40	334	353
Potatoes	Cwt.	2.9	2.4	1.7	170	185	170	486	444	289	2.23	2.14	990	618
Sweetpotatoes	Cwt.	1.5 ⁵	1.1	.6	94 ⁵	90	75	144 ⁵	99	45	4.34	7.49	430	337
Peanuts	Lbs.	7	7.2	7.7	1968	2550	2120	13312	18360	16324	.129	.126	2368	2057
Sugar beets	Tons	.5	---	2.5	11.1	---	16.6	5.7	---	40.8	---	---	---	---
SEED CROPS														
Alfalfa seed	Lbs.	5.2	5.5	5.5	240	245	200	1282	1348	1100	40.00	35.00	539	385
Sudangrass seed	Lbs.	7.0	5.0	1.0	478	550	300	3362	2750	300	5.60	5.50	154	16
HAY CROPS														
All hays	Tons	222	233	237	3.08	3.41	3.21	685	795	760	31.00	28.50	24645	21660
Alfalfa hay	Tons	155	159	167	3.94	4.50	4.10	610	716	685	---	---	---	---
Clo-tim hay	Tons	13	12	10	1.31	1.25	1.20	17	15	12	---	---	---	---
Grain hay	Tons	18	24	21	1.27	1.30	1.25	23	31	26	---	---	---	---
Other tame hay	Tons	15	17	19	1.13	1.00	1.00	17	17	19	---	---	---	---
Peanut hay	Tons	1	1	1	.86	.80	.90	1	1	1	---	---	---	---
Wild hay	Tons	20	20	19	.89	.75	.90	18	15	17	---	---	---	---
FRUITS AND NUTS														
Pecans, improved	Lbs.	---	---	---	---	---	---	6000	6000	7800	.300	.280	1800	2184
Apples	Bu.	---	---	---	---	---	---	539	450 ⁷	1200 ⁷	2.15	1.90	860	2075
COMMERCIAL VEGETABLES														
Cantaloups--mid-summer	Cwt.	.7	.3	.3	59	60	60	43	18	18	2.30	2.50	41	45
Carrots--early fall	Cwt.	.6	.2	.3	164	195	160	99	35	45	2.15	2.45	75	110
Lettuce--early spring	Cwt.	1.0	.6	.6	198	250	170	181	138	110	3.55	2.85	490	314
Lettuce--early fall	Cwt.	1.1	.7	1.1	178	250	265	197	175	292	4.10	3.95	718	1153
Onions--early summer	Cwt.	2.2	2.0	2.3	289	320	300	626	640	690	4.65	2.80	2976	1932
Tomatoes--late summer	Cwt.	.6	.5	.5	134	135	135	80	68	68	3.00	2.75	204	187
Tomatoes for processing	Tons	1.1	1.1	1.2	10.5	11.7	10.0	11.7	12.9	12.0	32.00	32.20	413	386

¹ Preliminary. ² 500 pound gross weight bales. ³ Short-time average. ⁴ Yield per acre and production in short tons. ⁵ Includes production not marketed and excluded in computing value, 50,000 bushels, 1963; 190,000 bushels, 1964. ⁶ Tons. ⁷ Bags of 100 pounds.

New Mexico Agricultural Statistics

FARM INCOME:

Realized gross and net income of farm operators from farming, and total, 1961-1964

Item	Year			
	1961	1962	1963	1964 ¹
Number of farms	17.4	16.7	16.1	15.4
Thousand				
Million dollars				
Cash receipts from farm marketings	244.2	274.2	269.9	244.0
Government payments	14.1	15.0	15.5	18.7
Value of home consumption	4.8	4.4	4.4	3.9
Gross rental value of farm dwellings	6.5	6.6	6.9	7.4
TOTAL	269.5	300.2	296.7	274.1
Farm production expenses	183.4	192.5	204.5	174.5
Realized net farm income	86.1	107.7	92.2	99.6
Net changes in farm inventories	16.6	-11.0	5.4	-20.9
Total net farm income	102.7	96.7	97.6	78.8

¹ Preliminary

Cash receipts from farm marketings, by commodities, 1961-1964

Commodity	Year			
	1961	1962	1963	1964 ¹
Thousand dollars				
Cattle and calves	121,279	138,531	134,892	116,004
Sheep and lambs	6,026	6,180	6,524	5,924
Wool	4,056	4,665	4,469	4,673
Cotton lint	43,390	51,702	48,469	46,688
Cottonseed	6,350	5,430	6,164	5,075
Wheat	13,019	8,375	7,361	3,967
Sorghum grain	6,328	8,885	10,171	9,732
Hay	7,396	9,977	10,858	10,918
Broomcorn	1,547	1,999	2,617	1,823
Dry beans	535	376	290	324
Apples	645	1,283	811	2,306
Peanuts	1,897	1,891	2,355	1,916
Pecans	1,154	3,308	1,785	2,064

¹ Preliminary.



GRAIN STOCKS: Quantities stored on and off farms, 1963, 1964, and 1965.

Year	On farms				Off farms			
	Jan. 1	Apr. 1	July 1	Oct. 1	Jan. 1	Apr. 1	July 1	Oct. 1
	1,000 bushels				1,000 bushels			
	WHEAT							
1963-----	256	128	85	385	4,644	5,000	3,975	4,693
1964-----	266	95	38	305	3,393	3,072	2,613	3,004
1965 ¹ -----	139	28	---	---	2,847	2,612	---	---
	CORN							
1963-----	289	160	72	31	25	47	19	16
1964-----	394	182	108	69	29	20	6	6
1965 ¹ -----	489	219	---	---	42	18	---	---
	OATS							
1963-----	98	62	15	140	29	36	5	20
1964-----	73	39	6	135	11	19	15	20
1965 ¹ -----	60	39	---	---	18	15	---	---
	BARLEY							
1963-----	238	170	60	343	28	22	8	32
1964-----	223	120	51	299	27	19	23	20
1965 ¹ -----	239	75	---	---	28	21	---	---
	GRAIN SORGHUM							
1963-----	1,523	812	254	203	7,065	6,900	4,657	3,937
1964-----	2,117	747	545	374	8,144	5,469	4,360	3,505
1965 ¹ -----	1,386	853	---	---	6,458	5,111	---	---

¹ Preliminary.

HAY STOCKS: Quantities stored on farms, 1963, 1964, and 1965

1963		1964		1965 ¹	
Jan. 1	May 1	Jan. 1	May 1	Jan. 1	May 1
1,000 tons		1,000 tons		1,000 tons	
310	72	358	64	365	61

¹ Preliminary.

COTTONSEED: Production, farm disposition, price, and value, 1962, 1963, and 1964

Year	Production	Farm disposition			Season average price per ton	Value of production
		Sold	Used on farms ¹			
	Thou. tons	Thou. tons	Thou. tons	Dollars	Thou. dollars	
1962-----	111	107	4	50.30	5,583	
1963-----	112	108	4	56.10	6,283	
1964-----	106	102	4	56.40	5,342	

¹ Includes amount used for planting crop of succeeding year.

WINTER WHEAT¹: Acreage, yield, and production, by counties, irrigated and non-irrigated, 1963¹

County	Acres planted			Acres harvested			Yield per harvested acre			Production		
	Irrig.	Non-irrig.	Total	Irrig.	Non-irrig.	Total	Irrig.	Non-irrig.	Total	Irrig.	Non-irrig.	Total
	Acres	Acres	Acres	Acres	Acres	Acres	Bushels	Bushels	Bushels	Bushels	Bushels	Bushels
Bernalillo	150	1050	1200	100	250	350	33.0	8.8	15.7	3300	2200	5500
McKinley	30	220	250	0	140	140	---	7.9	7.9	---	1100	1100
Rio Arriba	300	4100	4400	150	3450	3600	16.7	7.0	7.4	2500	24000	26500
Sandoval	500	250	750	200	160	360	14.5	7.5	11.4	2900	1200	4100
San Juan	420	180	600	400	100	500	33.8	12.0	29.4	13500	1200	14700
Santa Fe	450	1150	1600	350	500	850	34.6	12.8	21.8	12100	6400	18500
Taos	500	0	500	400	0	400	18.0	---	18.0	7200	---	7200
Valencia	950	450	1400	750	50	800	26.0	8.0	24.9	19500	400	19900
Northwest District	3300	7400	10700	2350	4650	7000	26.0	7.8	13.9	61000	36500	97500
Colfax	1600	2800	4400	930	1370	2300	35.7	13.1	22.2	33200	17900	51100
Curry	47000	92000	139000	42000	60000	102000	37.0	12.1	22.4	1552000	728000	2280000
De Baca	280	0	280	120	0	120	10.8	---	10.8	1300	---	1300
Guadalupe	20	0	20	0	0	0	---	---	---	---	---	---
Harding	250	8450	8700	250	2450	2700	30.4	10.0	11.9	7600	24500	32100
Mora	350	450	800	100	250	350	18.0	7.2	10.3	1800	1800	3600
Quay	4000	66000	70000	3000	47500	50500	31.0	15.0	15.9	93000	712000	805000
Roosevelt	4500	35500	40000	3100	27900	31000	33.5	13.0	15.0	104000	362000	466000
San Miguel	300	200	500	150	80	230	26.0	12.5	21.3	3900	1000	4900
Torrance	1000	3500	4500	300	1300	1600	30.0	10.6	14.2	9000	13800	22800
Union	400	2400	2800	250	1450	1700	32.8	9.0	12.5	8200	13000	21200
Northeast District	59700	211300	271000	50200	142300	192500	36.1	13.2	19.2	1814000	1874000	3688000
Catron	50	50	100	40	0	40	25.0	---	25.0	1000	---	1000
Grant	700	200	900	80	0	80	30.0	---	30.0	2400	---	2400
Hidalgo	30	0	30	0	0	0	---	---	---	---	---	---
Luna	200	0	200	0	0	0	---	---	---	---	---	---
Sierra	20	0	20	0	0	0	---	---	---	---	---	---
Socorro	150	0	150	30	0	30	20.0	---	20.0	600	---	600
Southwest District	1150	250	1400	150	0	150	26.7	---	26.7	4000	---	4000
Chaves	300	0	300	160	0	160	33.1	---	33.1	5300	---	5300
Dona Ana	30	0	30	30	0	30	30.0	---	30.0	900	---	900
Eddy	50	0	50	20	0	20	30.0	---	30.0	600	---	600
Lea	320	50	370	50	50	100	32.0	10.0	21.0	1600	500	2100
Lincoln	80	0	80	0	0	0	---	---	---	---	---	---
Otero	70	0	70	40	0	40	40.0	---	40.0	1600	---	1600
Southeast District	850	50	900	300	50	350	33.3	10.0	30.0	10000	500	10500
State	65000	219000	284000	53000	147000	200000	35.6	13.0	19.0	1889000	1911000	3800000

New Mexico Agricultural Statistics

¹ Includes a small acreage of spring wheat.

WINTER WHEAT: Acreage, yield, and production, by counties, irrigated and non-irrigated, 1964^{1 2}

County	Acres planted			Acres harvested			Yield per harvested acre			Production		
	Irrig.	Non-irrig.	Total	Irrig.	Non-irrig.	Total	Irrig.	Non-irrig.	Total	Irrig.	Non-irrig.	Total
	Acres	Acres	Acres	Acres	Acres	Acres	Bushels	Bushels	Bushels	Bushels	Bushels	Bushels
Bernalillo	100	1300	1400	100	250	350	33.0	8.0	15.1	3300	2000	5300
McKinley	300	200	500	300	150	450	24.0	11.3	19.8	7200	1700	8900
Rio Arriba	200	4300	4500	200	4000	4200	20.0	7.0	7.6	4000	28000	32000
Sandoval	200	100	300	100	50	150	20.0	8.0	16.0	2000	400	2400
San Juan	300	100	400	200	0	200	32.5	---	32.5	6500	---	6500
Santa Fe	450	1150	1600	350	950	1300	40.0	7.5	16.2	14000	7100	21100
Taos	450	50	500	350	0	350	20.0	---	20.0	7000	---	7000
Valencia	1000	700	1700	900	100	1000	31.1	8.0	28.8	28000	800	28800
Northwest District	3000	7900	10900	2500	5500	8000	28.8	7.3	14.0	72000	40000	112000
Colfax	1100	3600	4700	600	500	1100	33.3	9.6	22.5	20000	4800	24800
Curry	47000	99000	146000	41500	36500	78000	44.5	8.0	27.4	1846000	291000	2137000
De Baca	400	0	400	200	0	200	32.5	---	32.5	6500	---	6500
Guadalupe	100	0	100	0	0	0	---	---	---	---	---	---
Harding	250	8750	9000	200	400	600	25.0	5.0	11.7	5000	2000	7000
Mora	350	650	1000	100	200	300	17.0	6.0	9.7	1700	1200	2900
Quay	3500	66500	70000	2500	23000	25500	32.0	8.6	10.9	80000	198000	278000
Roosevelt	4000	36000	40000	2000	13000	15000	29.0	7.0	10.0	58000	91500	149500
San Miguel	500	400	900	250	0	250	24.0	---	24.0	6000	---	6000
Torrance	1100	3600	4700	400	900	1300	30.8	6.7	14.1	12300	6000	18300
Union	400	2300	2700	250	1000	1250	30.0	5.5	10.4	7500	5500	13000
Northeast District	58700	220800	279500	48000	75500	123500	42.6	7.9	21.4	2043000	600000	2643000
Catron	50	100	150	50	0	50	30.0	---	30.0	1500	---	1500
Grant	750	150	900	80	0	80	33.8	---	33.8	2700	---	2700
Hidalgo	30	0	30	0	0	0	---	---	---	---	---	---
Luna	200	0	200	30	0	30	36.7	---	36.7	1100	---	1100
Sierra	20	0	20	0	0	0	---	---	---	---	---	---
Socorro	200	0	200	40	0	40	30.0	---	30.0	1200	---	1200
Southwest District	1250	250	1500	200	0	200	32.5	---	32.5	6500	---	6500
Chaves	500	0	500	150	0	150	34.7	---	34.7	5200	---	5200
Dona Ana	80	0	80	30	0	30	33.3	---	33.3	1000	---	1000
Eddy	20	0	20	20	0	20	35.0	---	35.0	700	---	700
Lea	300	0	300	30	0	30	33.3	---	33.3	1000	---	1000
Lincoln	50	0	50	0	0	0	---	---	---	---	---	---
Otero	100	50	150	70	0	70	37.1	---	37.1	2600	---	2600
Southeast District	1050	50	1100	300	0	300	35.0	---	35.0	10500	---	10500
State	64000	229000	293000	51000	81000	132000	41.8	7.9	21.0	2132000	640000	2772000

New Mexico Agricultural Statistics

¹ Includes a small acreage of spring wheat. ² Preliminary

ALL SORGHUMS: Acreage, yield, and production, by counties, irrigated and non-irrigated, 1963

County	Harvested for grain											
	Acres planted all purposes			Acres			Yield per acre			Production		
	Irrig.	Non-irrig.	Total	Irrig.	Non-irrig.	Total	Irrig.	Non-irrig.	Total	Irrig.	Non-irrig.	Total
	Acres	Acres	Acres	Acres	Acres	Acres	Bushels	Bushels	Bushels	Bushels	Bushels	Bushels
Bernalillo	80	0	80	30	0	30	60.0	---	60.0	1800	---	1800
Rio Arriba	100	0	100	20	0	20	35.0	---	35.0	700	---	700
Sandoval	50	0	50	0	0	0	---	---	---	---	---	---
San Juan	70	0	70	0	0	0	---	---	---	---	---	---
Santa Fe	90	0	90	0	0	0	---	---	---	---	---	---
Taos	10	0	10	0	0	0	---	---	---	---	---	---
Valencia	1200	0	1200	450	0	450	50.0	---	50.0	22500	---	22500
Northwest District	1600	0	1600	500	0	500	50.0	---	50.0	25000	---	25000
Colfax	500	2000	2500	100	100	200	35.0	20.0	27.5	3500	2000	5500
Curry	56000	47000	103000	53000	37000	90000	100.6	22.8	68.6	5332000	844000	6176000
De Baca	1100	100	1200	660	0	660	84.8	---	84.8	56000	---	56000
Guadalupe	200	0	200	30	0	30	33.3	---	33.3	1000	---	1000
Harding	2000	600	2600	760	300	1060	36.7	8.0	28.6	27900	2400	30300
Mora	200	200	400	20	0	20	30.0	---	30.0	600	---	600
Quay	16100	17900	34000	12900	8900	21800	73.5	18.0	50.8	948000	160000	1108000
Roosevelt	27000	52000	79000	17000	34000	51000	79.0	22.0	41.0	1342700	748000	2090700
San Miguel	200	0	200	130	0	130	38.5	---	38.5	5000	---	5000
Torrance	1100	300	1400	100	0	100	43.0	---	43.0	4300	---	4300
Union	1600	25900	27500	1300	15700	17000	72.3	21.6	25.5	94000	339600	433600
Northeast District	106000	146000	252000	86000	96000	182000	90.9	21.8	54.5	7815000	2096000	9911000
Catron	20	0	20	10	0	10	40.0	---	40.0	400	---	400
Grant	500	0	500	250	0	250	78.0	---	78.0	19500	---	19500
Hidalgo	5600	0	5600	3600	0	3600	105.8	---	105.8	381000	---	381000
Luna	11500	0	11500	10000	0	10000	95.1	---	95.1	951000	---	951000
Sierra	150	0	150	80	0	80	67.5	---	67.5	5400	---	5400
Socorro	530	0	530	360	0	360	90.8	---	90.8	32700	---	32700
Southwest District	18300	0	18300	14300	0	14300	97.2	---	97.2	1390000	---	1390000
Chaves	11500	0	11500	4000	0	4000	81.0	---	81.0	324000	---	324000
Dona Ana	900	0	900	450	0	450	80.0	---	80.0	36000	---	36000
Eddy	2200	0	2200	1000	0	1000	78.0	---	78.0	78000	---	78000
Lea	37000	3000	40000	30500	2000	32500	59.2	22.0	57.0	1807000	44000	1851000
Lincoln	100	0	100	50	0	50	50.0	---	50.0	2500	---	2500
Otero	1400	0	1400	200	0	200	62.5	---	62.5	12500	---	12500
Southeast District	53100	3000	56100	36200	2000	38200	62.4	22.0	60.3	2260000	44000	2304000
State	179000	149000	328000	137000	98000	235000	83.9	21.8	58.0	11490000	2140000	13630000

New Mexico Agricultural Statistics

ALL SORGHUMS: Acreage, yield, and production, by counties, irrigated and non-irrigated, 1964¹

County	Harvested for grain											
	Acres planted All purpose			Acres			Yield per acre			Production		
	Irrig.	Non-irrig.	Total	Irrig.	Non-irrig.	Total	Irrig.	Non-irrig.	Total	Irrig.	Non-irrig.	Total
	Acres	Acres	Acres	Acres	Acres	Acres	Bushels	Bushels	Bushels	Bushels	Bushels	Bushels
Bernalillo	300	0	300	0	0	0	---	---	---	---	---	---
Rio Arriba	100	0	100	0	0	0	---	---	---	---	---	---
Sandoval	100	0	100	0	0	0	---	---	---	---	---	---
San Juan	350	0	350	0	0	0	---	---	---	---	---	---
Santa Fe	100	0	100	60	0	60	66.7	---	66.7	4000	---	4000
Taos	50	0	50	20	0	20	100.0	---	100.0	2000	---	2000
Valencia	2000	0	2000	320	0	320	53.1	---	53.1	17000	---	17000
Northwest District	3000	0	3000	400	0	400	57.5	---	57.5	23000	---	23000
Colfax	500	2000	2500	100	0	100	35.0	---	35.0	3500	---	3500
Curry	54000	37000	91000	46000	23000	69000	105.0	8.7	72.9	4830000	199000	5029000
De Baca	800	0	800	500	0	500	104.0	---	104.0	52000	---	52000
Guadalupe	200	0	200	30	0	30	33.3	---	33.3	1000	---	1000
Harding	1400	600	2000	520	0	520	36.5	---	36.5	19000	---	19000
Mora	100	200	300	0	0	0	---	---	---	---	---	---
Quay	11500	9500	21000	8600	400	9000	69.9	11.2	67.3	601500	4500	606000
Roosevelt	27000	49000	76000	16400	23600	40000	67.0	9.5	33.1	1099000	224000	1323000
San Miguel	200	0	200	150	0	150	40.0	---	40.0	6000	---	6000
Torrance	800	200	1000	100	0	100	45.0	---	45.0	4500	---	4500
Union	3500	24500	28000	2600	5000	7600	75.2	12.5	33.9	195500	62500	258000
Northeast District	100000	123000	223000	75000	52000	127000	90.8	9.4	57.5	6812000	490000	7302000
Catron	20	0	20	0	0	0	---	---	---	---	---	---
Grant	630	0	630	250	0	250	74.4	---	74.4	18600	---	18600
Hidalgo	7600	0	7600	5200	0	5200	105.0	---	105.0	546000	---	546000
Luna	12000	0	12000	10000	0	10000	100.0	---	100.0	1000000	---	1000000
Sierra	150	0	150	50	0	50	68.0	---	68.0	3400	---	3400
Socorro	600	0	600	500	0	500	86.0	---	86.0	43000	---	43000
Southwest District	21000	0	21000	16000	0	16000	100.7	---	100.7	1611000	---	1611000
Chaves	11000	0	11000	3500	0	3500	78.0	---	78.0	273000	---	273000
Dona Ana	1000	0	1000	500	0	500	78.0	---	78.0	39000	---	39000
Eddy	2050	0	2050	1000	0	1000	76.0	---	76.0	76000	---	76000
Lea	30500	2000	32500	23600	0	23600	56.8	---	56.8	1340000	---	1340000
Lincoln	50	0	50	0	0	0	---	---	---	---	---	---
Otero	1400	0	1400	0	0	0	---	---	---	---	---	---
Southeast District	46000	2000	48000	28600	0	28600	60.4	---	60.4	1728000	---	1728000
State	170000	125000	295000	120000	52000	172000	84.8	9.4	62.0	10174000	490000	10664000

New Mexico Agricultural Statistics

CORN: Acreage, yield, and production, by counties, irrigated and non-irrigated, 1963

County	Acres planted for all purposes	Harvested for grain								
		Acres			Yield per acre			Production		
		Irrig.	Non-irrig.	Total	Irrig.	Non-irrig.	Total	Irrig.	Non-irrig.	Total
Acres	Acres	Acres	Acres	Bushels	Bushels	Bushels	Bushels	Bushels	Bushels	
Bernalillo	1000	300	0	300	56.7	---	56.7	17000	---	17000
McKinley	1700	600	400	1000	28.3	11.0	21.4	17000	4400	21400
Rio Arriba	500	100	0	100	25.0	---	25.0	2500	---	2500
Sandoval	1200	350	50	400	34.3	9.0	31.1	12000	450	12450
San Juan	4900	2450	150	2600	59.2	8.7	56.3	145000	1300	146300
Santa Fe	1600	200	150	350	36.5	10.0	25.1	7300	1500	8800
Taos	600	450	0	450	22.0	---	22.0	9900	---	9900
Valencia	1500	250	50	300	29.2	7.0	25.5	7300	350	7650
Northwest District	13000	4700	800	5500	46.4	10.0	41.1	218000	8000	226000
Colfax	3000	200	300	500	40.0	8.0	20.8	8000	2400	10400
Curry	1750	250	50	300	66.4	18.0	58.3	16600	900	17500
De Baca	100	50	0	50	50.0	---	50.0	2500	---	2500
Guadalupe	200	100	0	100	25.0	---	25.0	2500	---	2500
Harding	150	0	100	100	---	8.0	8.0	---	800	800
Mora	500	100	50	150	33.0	8.0	24.7	3300	400	3700
Quay	300	100	50	150	33.0	20.0	28.7	3300	1000	4300
Roosevelt	1000	250	50	300	80.0	8.0	68.0	20000	400	20400
San Miguel	1000	300	400	700	30.0	10.0	18.6	9000	4000	13000
Torrance	3100	1250	250	1500	55.0	10.4	47.6	68800	2600	71400
Union	400	0	250	250	---	10.0	10.0	---	2500	2500
Northeast District	11500	2600	1500	4100	51.5	10.0	36.3	134000	15000	149000
Catron	80	60	20	80	25.0	10.0	21.2	1500	200	1700
Grant	520	140	80	220	60.0	10.0	41.8	8400	800	9200
Hidalgo	450	100	0	100	60.0	---	60.0	6000	---	6000
Luna	550	250	0	250	72.0	---	72.0	18000	---	18000
Sierra	400	150	0	150	50.0	---	50.0	7500	---	7500
Socorro	700	400	0	400	45.0	---	45.0	18000	---	18000
Southwest District	2700	1100	100	1200	54.0	10.0	50.3	59400	1000	60400
Chaves	1700	500	0	500	55.0	---	55.0	27500	---	27500
Dona Ana	1100	200	0	200	50.0	---	50.0	10000	---	10000
Eddy	200	50	0	50	50.0	---	50.0	2500	---	2500
Lea	1400	200	50	250	54.0	9.0	45.0	10800	450	11250
Lincoln	100	30	20	50	31.7	11.0	23.4	950	220	1170
Otero	300	120	30	150	32.1	11.0	27.9	3850	330	4180
Southeast District	4800	1100	100	1200	50.5	10.0	47.2	55600	1000	56600
State	32000	9500	2500	12000	49.2	10.0	41.0	467000	25000	492000

New Mexico Agricultural Statistics

CORN: Acreage, yield, and production, by counties, irrigated and non-irrigated, 1964¹

County	Acres planted all purposes	Harvested for grain								
		Acres			Yield per acre			Production		
		Irrig.	Non-irrig.	Total	Irrig.	Non-irrig.	Total	Irrig.	Non-irrig.	Total
Acres	Acres	Acres	Acres	Bushels	Bushels	Bushels	Bushels	Bushels	Bushels	
Bernalillo	1000	200	0	200	60.0	---	60.0	12000	---	12000
McKinley	2400	1200	450	1650	35.0	10.9	28.4	42000	4900	46900
Rio Arriba	550	100	0	100	40.0	---	40.0	4000	---	4000
Sandoval	1200	650	50	700	44.6	5.0	41.8	29000	250	29250
San Juan	4400	1700	100	1800	73.5	6.0	69.8	125000	600	125600
Santa Fe	2000	650	50	700	89.2	20.0	84.3	58000	1000	59000
Taos	450	350	0	350	25.7	---	25.7	9000	---	9000
Valencia	1500	250	50	300	32.0	5.0	27.5	8000	250	8250
Northwest District	13500	5100	700	5800	56.3	10.0	50.7	287000	7000	294000
Colfax	2700	150	0	150	40.0	---	40.0	6000	---	6000
Curry	2700	100	0	100	70.0	---	70.0	7000	---	7000
De Baca	100	50	0	50	70.0	---	70.0	3500	---	3500
Guadalupe	200	100	0	100	40.0	---	40.0	4000	---	4000
Harding	100	0	0	0	---	---	---	---	---	---
Mora	500	50	50	100	40.0	5.0	22.5	2000	250	2250
Quay	200	50	0	50	40.0	---	40.0	2000	---	2000
Roosevelt	1000	250	50	300	80.0	5.0	67.5	20000	250	20250
San Miguel	1200	400	0	400	35.0	---	35.0	14000	---	14000
Torrance	3700	1850	100	1950	70.3	10.0	67.2	130000	1000	131000
Union	600	0	0	0	---	---	---	---	---	---
Northeast District	13000	3000	200	3200	62.8	7.5	59.4	188500	1500	190000
Catron	100	50	0	50	40.0	---	40.0	2000	---	2000
Grant	400	150	0	150	93.3	---	93.3	14000	---	14000
Hidalgo	300	100	0	100	90.0	---	90.0	9000	---	9000
Luna	550	200	0	200	90.0	---	90.0	18000	---	18000
Sierra	350	100	0	100	70.0	---	70.0	7000	---	7000
Socorro	600	300	0	300	60.0	---	60.0	18000	---	18000
Southwest District	2300	900	0	900	75.6	---	75.6	68000	---	68000
Chaves	2200	500	0	500	72.0	---	72.0	36000	---	36000
Dona Ana	1050	200	0	200	70.0	---	70.0	14000	---	14000
Eddy	200	50	0	50	80.0	---	80.0	4000	---	4000
Lea	1400	150	0	150	66.7	---	66.7	10000	---	10000
Lincoln	100	50	0	50	60.0	---	60.0	3000	---	3000
Otero	250	150	0	150	53.3	---	53.3	8000	---	8000
Southeast District	5200	1100	0	1100	68.2	---	68.2	75000	---	75000
State	34000	10100	900	11000	61.2	9.4	57.0	618500	8500	627000

New Mexico Agricultural Statistics

¹ Preliminary

OATS: Acreage, yield, and production, by counties, irrigated and non-irrigated, 1963

County	Acres planted all purposes Acres	Acres harvested			Yield per harvested acre			Production		
		Irrig. Acres	Non-Irrig. Acres	Total Acres	Irrig. Bushels	Non-Irrig. Bushels	Total Bushels	Irrig. Bushels	Non-Irrig. Bushels	Total Bushels
Bernalillo	500	80	20	100	37.5	20.0	34.0	3000	400	3400
McKinley	1000	50	0	50	20.0	---	20.0	1000	---	1000
Rio Arriba	2800	250	250	500	20.0	17.2	18.6	5000	4300	9300
Sandoval	800	100	0	100	28.0	---	28.0	2800	---	2800
San Juan	800	300	0	300	35.0	---	35.0	10500	---	10500
Santa Fe	600	150	0	150	35.3	---	35.3	5300	---	5300
Taos	1000	250	50	300	31.2	14.0	28.3	7800	700	8500
Valencia	3000	220	80	300	30.0	20.0	27.3	6600	1600	8200
Northwest District	10500	1400	400	1800	30.0	17.5	27.2	42000	7000	49000
Colfax	5700	1300	400	1700	29.1	10.5	24.7	37800	4200	42000
Curry	3000	200	100	300	44.0	15.0	34.3	8800	1500	10300
De Baca	200	0	0	0	---	---	---	---	---	---
Guadalupe	100	50	0	50	24.0	---	24.0	1200	---	1200
Harding	300	0	50	50	---	20.0	20.0	---	1000	1000
Mora	2600	200	250	450	24.0	15.2	19.1	4800	3800	8600
Quay	700	300	0	300	29.0	---	29.0	8700	---	8700
Roosevelt	500	100	50	150	39.9	20.0	32.7	3900	1000	4900
San Miguel	3000	100	100	200	22.0	10.0	16.0	2200	1000	3200
Torrance	300	0	0	0	---	---	---	---	---	---
Union	500	50	50	100	32.0	10.0	21.0	1600	500	2100
Northeast District	16900	2300	1000	3300	30.0	13.0	24.8	69000	13000	82000
Catron	50	0	0	0	---	---	---	---	---	---
Grant	1000	180	0	180	37.2	---	37.2	6700	---	6700
Hidalgo	250	70	0	70	40.0	---	40.0	2800	---	2800
Luna	700	150	0	150	40.0	---	40.0	6000	---	6000
Sierra	100	0	0	0	---	---	---	---	---	---
Socorro	300	0	0	0	---	---	---	---	---	---
Southwest District	2400	400	0	400	38.8	---	38.8	15500	---	15500
Chaves	1650	650	0	650	50.8	---	50.8	33000	---	33000
Dona Ana	500	50	0	50	50.0	---	50.0	2500	---	2500
Eddy	1600	1000	0	1000	56.5	---	56.5	56500	---	56500
Lea	900	500	0	500	54.0	---	54.0	27000	---	27000
Lincoln	50	0	0	0	---	---	---	---	---	---
Otero	500	300	0	300	48.3	---	48.3	14500	---	14500
Southeast District	5200	2500	0	2500	53.4	---	53.4	133500	---	133500
State	35000	6600	1400	8000	39.4	14.3	35.0	260000	20000	280000

New Mexico Agricultural Statistics

OATS: Acreage, yield, and production, by counties, irrigated and non-irrigated, 1964¹

County	Acres planted all purposes Acres	Acres harvested			Yield per harvested acre			Production		
		Irrig. Acres	Non-Irrig. Acres	Total Acres	Irrig. Bushels	Non-Irrig. Bushels	Total Bushels	Irrig. Bushels	Non-Irrig. Bushels	Total Bushels
Bernalillo	400	0	0	0	---	---	---	---	---	---
McKinley	1200	100	250	350	40.0	15.2	22.3	4000	3800	7800
Rio Arriba	2900	150	50	200	30.7	16.0	27.0	4600	800	5400
Sandoval	500	50	0	50	40.0	---	40.0	2000	---	2000
San Juan	800	300	0	300	38.0	---	38.0	11400	---	11400
Santa Fe	700	100	0	100	75.0	---	75.0	7500	---	7500
Taos	800	300	0	300	30.0	---	30.0	9000	---	9000
Valencia	3400	300	0	300	30.0	---	30.0	9000	---	9000
Northwest District	10700	1300	300	1600	36.5	15.3	32.6	47500	4600	52100
Colfax	4000	400	400	800	29.5	15.5	22.5	11800	6200	18000
Curry	2000	200	0	200	50.0	---	50.0	10000	---	10000
De Baca	200	0	0	0	---	---	---	---	---	---
Guadalupe	100	0	0	0	---	---	---	---	---	---
Mora	1700	200	0	200	28.0	---	28.0	5600	---	5600
Quay	300	200	0	200	67.5	---	67.5	13500	---	13500
Roosevelt	400	0	0	0	---	---	---	---	---	---
San Miguel	2500	50	0	50	26.0	---	26.0	1300	---	1300
Torrance	300	0	0	0	---	---	---	---	---	---
Union	500	50	0	50	36.0	---	36.0	1800	---	1800
Northeast District	12000	1100	400	1500	40.0	15.5	33.5	44000	6200	50200
Catron	50	0	0	0	---	---	---	---	---	---
Grant	800	200	0	200	47.0	---	47.0	9400	---	9400
Hidalgo	150	50	0	50	50.0	---	50.0	2500	---	2500
Luna	600	150	0	150	54.0	---	54.0	8100	---	8100
Sierra	100	0	0	0	---	---	---	---	---	---
Socorro	300	0	0	0	---	---	---	---	---	---
Southwest District	2000	400	0	400	50.0	---	50.0	20000	---	20000
Chaves	1750	700	0	700	73.9	---	73.9	51700	---	51700
Dona Ana	500	100	0	100	80.0	---	80.0	8000	---	8000
Eddy	1400	1100	0	1100	75.5	---	75.5	83000	---	83000
Lea	900	300	0	300	60.0	---	60.0	18000	---	18000
Lincoln	50	0	0	0	---	---	---	---	---	---
Otero	700	300	0	300	56.7	---	56.7	17000	---	17000
Southeast District	5300	2500	0	2500	71.1	---	71.1	177700	---	177700
State	30000	5300	700	6000	54.6	15.4	50.0	289200	10800	300000

¹ Preliminary

New Mexico Agricultural Statistics

BARLEY: Acreage, yield, and production, by counties, irrigated and non-irrigated, 1963

County	Acres planted all purposes	Acres harvested			Yield per harvested acre			Production		
		Irrig.	Non-Irrig.	Total	Irrig.	Non-Irrig.	Total	Irrig.	Non-Irrig.	Total
Bernalillo	600	270	130	400	37.0	15.4	30.0	10000	2000	12000
McKinley	100	30	20	50	30.0	15.0	24.0	900	300	1200
Rio Arriba	1000	500	100	600	33.0	15.0	30.0	16500	1500	18000
Sandoval	100	0	50	50	---	15.0	15.0	---	750	750
San Juan	800	600	0	600	35.0	---	35.0	21000	---	21000
Santa Fe	1100	500	200	700	40.0	14.8	32.8	20000	2950	22950
Taos	1100	800	0	800	31.2	---	31.2	25000	---	25000
Valencia	1600	600	0	600	34.0	---	34.0	20400	---	20400
Northwest District	6400	3300	500	3800	34.5	15.0	31.9	113800	7500	121300
Colfax	500	50	150	200	28.0	17.3	20.0	1400	2600	4000
Curry	4300	1050	2250	3300	38.1	17.7	24.2	40000	39800	79800
De Baca	400	150	0	150	20.0	---	20.0	3000	---	3000
Guadalupe	100	0	0	0	---	---	---	---	---	---
Mora	100	100	0	100	30.0	---	30.0	3000	---	3000
Quay	1800	150	0	150	22.7	---	22.7	3400	---	3400
Roosevelt	2800	1100	300	1400	34.1	15.0	30.0	37500	4500	42000
San Miguel	400	0	0	0	---	---	---	---	---	---
Torrance	700	350	50	400	32.9	16.0	30.8	11500	800	12300
Union	500	150	50	200	37.3	16.0	32.0	5600	800	6400
Northeast District	11600	3100	2800	5900	34.0	17.3	26.1	105400	48500	153900
Catron	300	100	100	200	37.0	20.0	28.5	3700	2000	5700
Grant	600	400	0	400	42.0	---	42.0	16800	---	16800
Hidalgo	2900	2200	0	2200	55.0	---	55.0	121000	---	121000
Luna	3000	2000	0	2000	54.5	---	54.5	109000	---	109000
Sierra	1600	800	0	800	64.1	---	64.1	51300	---	51300
Socorro	600	400	0	400	40.0	---	40.0	16000	---	16000
Southwest District	9000	5900	100	6000	53.9	20.0	53.3	317800	2000	319800
Chaves	14600	9200	0	9200	54.3	---	54.3	500000	---	500000
Dona Ana	4400	3300	0	3300	71.2	---	71.2	235000	---	235000
Eddy	5900	3500	0	3500	60.1	---	60.1	210500	---	210500
Lea	3500	2950	50	3000	55.0	20.0	54.4	162300	1000	163300
Lincoln	50	30	0	30	40.0	---	40.0	1200	---	1200
Otero	550	220	50	270	40.9	20.0	37.0	9000	1000	10000
Southeast District	29000	19200	100	19300	58.2	20.0	58.0	1118000	2000	1120000
State	56000	31500	3500	35000	52.5	17.1	49.0	1655000	60000	1715000

BARLEY: Acreage, yield, and production, by counties, irrigated and non-irrigated, 1964¹

County	Acres planted all purposes	Acres harvested			Yield per harvested acre			Production		
		Irrig.	Non-irrig.	Total	Irrig.	Non-irrig.	Total	Irrig.	Non-irrig.	Total
Bernalillo	600	150	250	400	34.7	16.0	23.0	5200	4000	9200
McKinley	100	0	50	50	---	20.0	20.0	---	1000	1000
Rio Arriba	700	300	100	400	33.0	15.0	28.5	9900	1500	11400
Sandoval	100	30	20	50	30.0	15.0	24.0	900	300	1200
San Juan	1000	700	0	700	37.1	---	37.1	26000	---	26000
Santa Fe	700	120	480	600	41.7	16.0	21.2	5000	7700	12700
Taos	700	600	0	600	30.0	---	30.0	18000	---	18000
Valencia	1100	600	0	600	28.3	---	28.3	17000	---	17000
Northwest District	5000	2500	900	3400	32.8	16.1	28.4	82000	14500	96500
Colfax	400	100	0	100	26.0	---	26.0	2600	---	2600
Curry	5000	700	900	1600	36.4	10.3	21.7	25500	9250	34750
De Baca	400	150	0	150	20.7	---	20.7	3100	---	3100
Guadalupe	100	0	0	0	---	---	---	---	---	---
Mora	100	100	0	100	28.0	---	28.0	2800	---	2800
Quay	1500	100	0	100	20.0	---	20.0	2000	---	2000
Roosevelt	3000	600	100	700	32.5	7.5	28.9	19500	750	20250
San Miguel	300	0	0	0	---	---	---	---	---	---
Torrance	700	300	0	300	31.0	---	31.0	9300	---	9300
Union	500	150	0	150	34.7	---	34.7	5200	---	5200
Northeast District	12000	2200	1000	3200	31.8	10.0	25.0	70000	10000	80000
Catron	300	100	0	100	35.0	---	35.0	3500	---	3500
Grant	600	300	0	300	41.7	---	41.7	12500	---	12500
Hidalgo	2700	2000	0	2000	53.5	---	53.5	107000	---	107000
Luna	2700	1800	0	1800	55.0	---	55.0	99000	---	99000
Sierra	1600	1000	0	1000	60.0	---	60.0	60000	---	60000
Socorro	700	500	0	500	50.0	---	50.0	25000	---	25000
Southwest District	8600	5700	0	5700	53.9	---	53.9	307000	---	307000
Chaves	12000	11300	0	11300	42.7	---	42.7	483000	---	483000
Dona Ana	6800	5200	0	5200	57.7	---	57.7	300000	---	300000
Eddy	5000	3500	0	3500	44.9	---	44.9	157000	---	157000
Lea	3000	1450	50	1500	44.8	15.0	43.8	65000	750	65750
Lincoln	50	0	0	0	---	---	---	---	---	---
Otero	550	150	50	200	40.0	15.0	33.8	6000	750	6750
Southeast District	27400	21600	100	21700	46.8	15.0	46.7	1011000	1500	1012500
State	53000	32000	2000	34000	45.9	13.0	44.0	1470000	26000	1496000

¹Preliminary

ALL COTTON: Acreage, yield, and production, by counties, irrigated and non-irrigated, 1963

County	Acres planted			Acres harvested			Yield per harvested acre			Production (500 pound gross weight bales)		
	Irrig.	Non-irrig.	Total	Irrig.	Non-irrig.	Total	Irrig.	Non-irrig.	Total	Irrig.	Non-irrig.	Total
	Acres	Acres	Acres	Acres	Acres	Acres	Pounds	Pounds	Pounds	Bales	Bales	Bales
Curry	1140	200	1340	1130	200	1330	412	350	403	973	147	1120
De Baca	495	0	495	40	0	40	250	---	250	20	---	20
Quay	2770	0	2770	2610	0	2610	607	---	607	3310	---	3310
Roosevelt	14500	3100	17600	13330	2870	16200	570	300	523	15890	1810	17700
Northeast District	18905	3300	22205	17110	3070	20180	565	303	525	20193	1957	22150
Grant	105	0	105	100	0	100	670	---	670	140	---	140
Hidalgo	6300	0	6300	6225	0	6225	899	---	899	11700	---	11700
Luna	14300	0	14300	13285	0	13285	965	---	965	26800	---	26800
Sierra	2830	0	2830	2775	0	2775	801	---	801	4650	---	4650
Socorro	1970	0	1970	1885	0	1885	832	---	832	3280	---	3280
Southwest District	25505	0	25505	24270	0	24270	918	---	918	46570	---	46570
Chaves	31400	0	31400	30130	0	30130	810	---	810	51000	---	51000
Dona Ana	66700	0	66700	65505	0	65505	664	---	664	90900	---	90900
Eddy	26900	0	26900	26435	0	26435	700	---	700	38700	---	38700
Lea	27860	1440	29300	20540	1160	21700	431	240	421	18516	584	19100
Otero	1990	0	1990	1780	0	1780	693	---	693	2580	---	2580
Southeast District	154850	1440	156290	144390	1160	145550	668	240	665	201696	584	202280
State	199260	4740	204000	185770	4230	190000	691	286	682	268459	2541	271000

ALL COTTON: Acreage, yield, and production, by counties, irrigated and non-irrigated, 1964

County	Acres planted			Acres harvested			Yield per harvested acre			Production (500 pound gross weight bales)		
	Irrig.	Non-irrig.	Total	Irrig.	Non-irrig.	Total	Irrig.	Non-irrig.	Total	Irrig.	Non-irrig.	Total
	Acres	Acres	Acres	Acres	Acres	Acres	Pounds	Pounds	Pounds	Bales	Bales	Bales
Valencia	10	0	10	10	0	10	500	---	500	10	---	10
Northwest District	10	0	10	10	0	10	500	---	500	10	---	10
Curry	1110	200	1310	1080	200	1280	494	170	443	1112	71	1183
De Baca	470	0	470	440	0	440	236	---	236	217	---	217
Quay	2880	0	2880	2735	0	2735	570	---	570	3255	---	3255
Roosevelt	15490	3000	18490	14305	2700	17005	424	120	376	12669	677	13346
Northeast District	19950	3200	23150	18560	2900	21460	445	123	402	17253	748	18001
Grant	110	0	110	100	0	100	640	---	640	133	---	133
Hidalgo	6695	0	6695	6260	0	6260	729	---	729	9530	---	9530
Luna	15085	0	15085	14005	0	14005	829	---	829	24231	---	24231
Sierra	2795	0	2795	2705	0	2705	654	---	654	3693	---	3693
Socorro	2060	0	2060	1985	0	1985	529	---	529	2192	---	2192
Southwest District	26745	0	26745	25055	0	25055	760	---	760	39779	---	39779
Chaves	31350	0	31350	29690	0	29690	772	---	772	47875	---	47875
Dona Ana	59835	0	59835	58075	0	58075	697	---	697	84539	---	84539
Eddy	26570	0	26570	25845	0	25845	695	---	695	37477	---	37477
Lea	26160	1000	27160	25185	750	25935	518	91	505	27214	142	27356
Otero	2180	0	2180	1930	0	1930	487	---	487	1963	---	1963
Southeast District	146095	1000	147095	140725	750	141475	677	91	674	199068	142	199210
State	192800	4200	197000	184350	3650	188000	665	117	655	256110	890	257000

AMERICAN EGYPTIAN COTTON: Acreage, yield, and production by counties, all irrigated, 1963 and 1964

County	1963			1964		
	Acres		Yield per harvested acre	Acres		Yield per harvested acre
	Planted	Harvested		Planted	Harvested	
Hidalgo	35	30	467	35	30	367
Luna	190	170	512	195	180	417
Sierra	345	340	459	275	270	470
Southwest District	570	540	476	505	480	444
Chaves	50	40	450	70	60	550
Dona Ana	28270	27840	522	21665	21170	505
Eddy	255	225	471	200	140	321
Otero	55	55	400	60	50	400
Southeast District	28630	28160	521	21995	21420	503

UPLAND COTTON: Acreage, yield, and production, by counties, irrigated and non-irrigated, 1963

County	Acres planted			Acres harvested			Yield per harvested acre			Production (500 pound gross weight bales)		
	Irrig.	Non-irrig.	Total	Irrig.	Non-irrig.	Total	Irrig.	Non-irrig.	Total	Irrig.	Non-irrig.	Total
	Acres	Acres	Acres	Acres	Acres	Acres	Pounds	Pounds	Pounds	Bales	Bales	Bales
Curry	1140	200	1340	1130	200	1330	412	350	403	973	147	1120
De Baca	495	0	495	40	0	40	250	---	250	20	---	20
Quay	2770	0	2770	2610	0	2610	607	---	607	3310	---	3310
Roosevelt	14500	3100	17600	13330	2870	16200	570	300	523	15890	1810	17700
Northeast District	18905	3300	22205	17110	3070	20180	565	303	525	20193	1957	22150
Grant	105	0	105	100	0	100	670	---	670	140	---	140
Hidalgo	6265	0	6265	6195	0	6195	901	---	901	11671	---	11671
Luna	14110	0	14110	13115	0	13115	971	---	971	26618	---	26618
Sierra	2485	0	2485	2435	0	2435	849	---	849	4324	---	4324
Socorro	1970	0	1970	1885	0	1885	832	---	832	3280	---	3280
Southwest District	24935	0	24935	23730	0	23730	928	---	928	46033	---	46033
Chaves	31350	0	31350	30090	0	30090	810	---	810	50962	---	50962
Dona Ana	38430	0	38430	37665	0	37665	769	---	769	60542	---	60542
Eddy	26645	0	26645	26210	0	26210	702	---	702	38479	---	38479
Lea	27860	1440	29300	20540	1160	21700	431	240	421	18516	584	19100
Otero	1935	0	1935	1725	0	1725	703	---	703	2534	---	2534
Southeast District	126220	1440	127660	116230	1160	117390	704	240	699	171033	584	171617
State	170060	4740	174800	157070	4230	161300	722	286	711	237259	2541	239800

New Mexico Agricultural Statistics

UPLAND COTTON: Acreage, yield, and production, by counties, irrigated and non-irrigated, 1964

County	Acres planted			Acres harvested			Yield per harvested acre			Production (500 pound gross weight bales)		
	Irrig.	Non-irrig.	Total	Irrig.	Non-irrig.	Total	Irrig.	Non-irrig.	Total	Irrig.	Non-irrig.	Total
	Acres	Acres	Acres	Acres	Acres	Acres	Pounds	Pounds	Pounds	Bales	Bales	Bales
Valencia	10	0	10	10	0	10	500	---	500	10	---	10
Northwest District	10	0	10	10	0	10	500	---	500	10	---	10
Curry	1110	200	1310	1080	200	1280	494	170	443	1112	71	1183
De Baca	470	0	470	440	0	440	236	---	236	217	---	217
Quay	2880	0	2880	2735	0	2735	570	---	570	3255	---	3255
Roosevelt	15490	3000	18490	14305	2700	17005	424	120	376	12669	677	13346
Northeast District	19950	3200	23150	18560	2900	21460	445	123	402	17253	748	18001
Grant	110	0	110	100	0	100	640	---	640	133	---	133
Hidalgo	6660	0	6660	6230	0	6230	731	---	731	9508	---	9508
Luna	14890	0	14890	13825	0	13825	834	---	834	24074	---	24074
Sierra	2520	0	2520	2435	0	2435	674	---	674	3428	---	3428
Socorro	2060	0	2060	1985	0	1985	529	---	529	2192	---	2192
Southwest District	26240	0	26240	24575	0	24575	767	---	767	39335	---	39335
Chaves	31280	0	31280	29630	0	29630	773	---	773	47806	---	47806
Dona Ana	38170	0	38170	36905	0	36905	807	---	807	62190	---	62190
Eddy	26370	0	26370	25705	0	25705	697	---	697	37382	---	37382
Lea	26160	1000	27160	25185	750	25935	518	91	505	27214	142	27356
Otero	2120	0	2120	1880	0	1880	489	---	489	1920	---	1920
Southeast District	124100	1000	125100	119305	750	120055	709	91	705	176512	142	176654
State	170300	4200	174500	162450	3650	166100	687	117	675	233110	890	234000

New Mexico Agricultural Statistics

New Mexico Agricultural Statistics

ALL HAY: Acreage, yield, and production, by counties, 1963 and 1964

County	1963			1964 ¹		
	Acres harvested	Yield per acre	Production	Acres harvested	Yield per acre	Production
	Acres	Tons	Tons	Acres	Tons	Tons
Bernalillo	5500	3.8	20800	5400	3.8	20600
McKinley	1300	1.9	2500	1450	1.9	2700
Rio Arriba	15200	1.3	19800	14200	1.1	16300
Sandoval	3200	1.7	5500	3500	1.7	5900
San Juan	10500	3.4	35400	11000	3.3	36200
Santa Fe	4000	2.6	10500	4100	2.3	9300
Taos	10300	1.6	16100	10200	1.2	12300
Valencia	14000	3.4	47400	14550	2.8	41300
Northwest District	64000	2.47	158000	64400	2.25	144600
Colfax	20400	1.4	28600	17200	1.4	24000
Curry	2700	1.7	4500	3200	1.8	5600
De Baca	3400	4.1	13900	3500	5.1	17700
Guadalupe	1100	2.4	2600	1200	2.4	2850
Harding	1000	0.9	900	600	1.2	700
Mora	13700	1.3	18000	12300	1.3	15550
Quay	6900	4.0	27400	6200	2.7	16700
Roosevelt	4700	3.7	17500	4500	3.2	14400
San Miguel	5600	1.4	8000	5400	1.0	5200
Torrance	5000	4.6	22800	4200	4.7	19800
Union	8500	1.0	8800	9600	1.3	12600
Northeast District	73000	2.10	153000	67900	1.99	135100
Catron	600	3.2	1900	600	3.2	1950
Grant	2500	3.5	8800	2900	3.3	9600
Hidalgo	1700	3.8	6500	1500	4.0	5950
Luna	1800	3.9	7100	1850	3.8	7100
Sierra	1300	5.6	7300	1450	5.7	8200
Socorro	4100	4.2	17400	3500	4.2	14800
Southwest District	12000	4.08	49000	11800	4.03	47600
Chaves	33200	6.4	211500	35800	5.9	210700
Dona Ana	10100	4.8	48000	11500	4.7	54300
Eddy	28500	4.8	136700	32000	3.8	123200
Lea	7700	3.5	27200	9100	3.5	31750
Lincoln	2500	2.6	6600	2300	2.8	6450
Otero	2000	2.5	5000	2200	2.9	6300
Southeast District	84000	5.18	435000	92900	4.66	432700
State	233000	3.41	795000	237000	3.21	760000

¹ Preliminary.

New Mexico Agricultural Statistics

ALFALFA HAY: Acreage, yield, and production, by counties, practically all irrigated. 1963 and 1964

County	1963			1964 ¹		
	Acres harvested	Yield per acre	Production	Acres harvested	Yield per acre	Production
	Acres	Tons	Tons	Acres	Tons	Tons
Bernalillo	4900	4.0	19600	4900	4.0	19600
McKinley	600	3.0	1800	850	2.5	2100
Rio Arriba	4700	1.4	6800	4700	1.2	5600
Sandoval	2000	2.2	4300	2400	2.0	4800
San Juan	9300	3.6	33700	9900	3.5	34650
Santa Fe	3300	3.0	9900	3500	2.5	8800
Taos	5800	1.8	10600	6200	1.2	7450
Valencia	11900	3.7	44300	12550	3.1	38300
Northwest District	42500	3.08	131000	45000	2.70	121300
Colfax	8500	2.1	17900	7200	2.0	14700
Curry	400	5.5	2200	600	5.0	3000
De Baca	2300	5.3	12200	2500	6.5	16250
Guadalupe	1000	2.5	2500	1100	2.5	2750
Harding	200	2.5	500	200	2.5	500
Mora	3600	2.6	9400	2800	2.5	7000
Quay	5500	4.6	25400	5000	3.0	15000
Roosevelt	2600	5.9	15400	2100	5.5	11600
San Miguel	2100	2.5	5200	2100	1.2	2500
Torrance	4100	5.2	21500	3400	5.5	18700
Union	2200	1.7	3800	2000	2.5	5000
Northeast District	32500	3.57	116000	29000	3.34	97000
Catron	300	5.0	1500	300	5.2	1550
Grant	1700	4.3	7300	2200	4.0	8800
Hidalgo	1100	5.0	5500	1000	5.2	5200
Luna	1200	5.1	6100	1250	5.0	6250
Sierra	1200	6.0	7200	1350	6.0	8100
Socorro	3500	4.7	16400	2900	4.8	13900
Southwest District	9000	4.89	44000	9000	4.87	43800
Chaves	31200	6.7	208500	33700	6.2	208000
Dona Ana	9200	5.1	47100	10700	5.0	53500
Eddy	27000	5.0	135200	30700	4.0	121900
Lea	5200	4.8	24700	6400	4.5	28800
Lincoln	1400	3.9	5500	1300	4.2	5400
Otero	1000	4.0	4000	1200	4.4	5300
Southeast District	75000	5.67	425000	84000	5.03	422900
State	159000	4.50	716000	167000	4.10	685000

ALFALFA SEED: Acreage, yield, and production, by counties, all irrigated, 1963 and 1964

County	1963			1964 ¹		
	Acres harvested	Yield per acre	Production	Acres harvested	Yield per acre	Production
	Acres	Pounds	Pounds	Acres	Pounds	Pounds
Quay	50	200	10000	50	200	10000
Northeast District	50	200	10000	50	200	10000
Southwest District	50	280	14000	50	200	10000
Chaves	2700	196	530000	2350	196	460000
Dona Ana	650	434	282000	400	325	130000
Eddy	2000	251	502000	2600	185	480000
Lea	50	200	10000	50	200	10000
Southeast District	5400	245	1324000	5400	200	1080000
State	5500	245	1348000	5500	200	1100000

¹ Preliminary.

BROOMCORN: Acreage, yield, and production, by counties, irrigated and non-irrigated, 1963

County	Acres planted		Acres harvested		Yield per harvested acre		Production	
	Irrig. Acres	Non-Irrig. Acres	Total Acres	Total Acres	Irrig. Pounds	Non-Irrig. Pounds	Total Pounds	Total Tons
Curry	450	200	450	450	550	330	455	69
Guadalupe	250	0	250	0	---	---	---	---
Harding	600	500	550	550	480	355	370	12
Quay	19900	16900	19500	400	400	330	340	520
Roosevelt	21200	15700	21000	650	650	305	390	1720
Union	2050	2000	2000	---	---	310	310	---
Northeast District	44450	35300	43500	565	565	315	365	2321
Lea	550	0	500	800	800	---	800	200
Southeast District	550	0	500	800	800	---	800	200
State	45000	35300	44000	580	580	315	370	2521

BROOMCORN: Acreage, yield, and production, by counties, irrigated and non-irrigated, 1964¹

County	Acres planted		Acres harvested		Yield per harvested acre		Production	
	Irrig. Acres	Non-Irrig. Acres	Total Acres	Total Acres	Irrig. Pounds	Non-Irrig. Pounds	Total Pounds	Total Tons
Curry	350	0	50	50	520	---	520	13
Guadalupe	250	0	0	0	---	---	---	---
Chase	10100	3550	6050	355	355	105	210	445
Roosevelt	14000	3400	8600	470	470	120	330	1222
Union	2000	250	250	0	0	120	120	---
Northeast District	26700	7200	14950	435	435	110	280	1680
Lea	300	0	50	600	600	---	600	15
Southeast District	300	0	50	600	600	---	600	15
State	27000	7800	15000	435	435	110	280	1695

¹ Preliminary

POTATOES: Acreage, yield, and production, by counties, all irrigated, 1963 and 1964

County	1963				1964			
	Acres		Yield per harvested acre	Production	Acres		Yield per harvested acre	Production
	Planted	Harvested			Planted	Harvested		
	Acres	Acres	Cwt.	Cwt.	Acres	Acres	Cwt.	Cwt.
Santa Fe	250	250	200	50000	160	160	200	32000
Taos	400	400	170	68000	250	200	70	14000
Valencia	200	200	210	42000	200	200	190	38000
Other Counties	250	150	150	22500	190	140	107	15000
Northeast District	1100	1000	182	182500	800	700	141	99000
Torrance	1200	1200	193	231500	800	800	200	160000
Other Counties	200	200	150	30000	200	200	150	30000
Northeast District	1400	1400	187	261500	1000	1000	190	190000
State	2500	2400	185	444000	1800	1700	170	289000

SWEETPOTATOES: Acreage, yield, and production, by counties, all irrigated, 1963 and 1964

County	1963				1964			
	Acres		Yield per harvested acre	Production	Acres		Yield per harvested acre	Production
	Planted	Harvested			Planted	Harvested		
	Acres	Acres	Cwt.	Cwt.	Acres	Acres	Cwt.	Cwt.
Roosevelt	1200	1000	91	91000	750	550	75	41000
Northeast District	1200	1000	91	91000	750	550	75	41000
Southeast District	100	100	80	8000	50	50	80	4000
State	1300	1100	90	99000	800	600	75	45000

PEANUTS PICKED AND THRESHED: Acreage, yield, and production, by counties, all irrigated, 1963 and 1964

County	1963			1964		
	Acres harvested	Yield per acre	Production	Acres harvested	Yield per acre	Production
Quay	65	1862	121000	85	1200	102000
Roosevelt	6885	2601	17906000	7395	2167	16025000
Northeast District	6950	2594	18027000	7480	2156	16127000
Lea	250	1332	333000	220	895	197000
Southeast District	250	1332	333000	220	895	197000
State	7200	2550	18360000	7700	2120	16324000

ALL DRY BEANS: Acreage, yield, and production, by counties, irrigated and non-irrigated, 1963

County	Acres planted for all purposes	Acres harvested			Yield per harvested acre			Production		
		Irrig.	Non-irrig.	Total	Irrig.	Non-irrig.	Total	Irrig.	Non-irrig.	Total
	Acres	Acres	Acres	Acres	Pounds	Pounds	Pounds	100lb. bags	100lb. bags	100lb. bags
Bernalillo	250	0	250	250	---	340	340	---	850	850
McKinley	2100	0	1900	1900	---	500	500	---	9500	9500
Rio Arriba	50	30	20	50	600	250	460	180	50	230
Sandoval	50	20	30	50	750	235	440	150	70	220
San Juan	200	200	0	200	1450	---	1450	2900	---	2900
Santa Fe	250	100	100	200	670	330	500	670	330	1000
Taos	50	50	0	50	600	---	600	300	---	300
Valencia	350	100	200	300	600	200	335	600	400	1000
Northwest District	3300	500	2500	3000	960	450	535	4800	11200	16000
Colfax	50	50	0	50	1000	---	1000	500	---	500
Guadalupe	100	100	0	100	700	---	700	700	---	700
Mora	50	40	10	50	1200	200	1000	480	20	500
Quay	10	10	0	10	700	---	700	70	---	70
San Miguel	200	50	50	100	560	100	330	280	50	330
Torrance	1650	1150	300	1450	830	395	740	9570	1180	10750
Union	40	0	40	40	---	375	375	---	150	150
Northeast District	2100	1400	400	1800	830	350	720	11600	1400	13000
Hidalgo	300	250	0	250	1760	---	1760	4400	---	4400
Luna	1000	750	0	750	2360	---	2360	17700	---	17700
Socorro	100	50	0	50	1000	---	1000	500	---	500
Southwest District	1400	1050	0	1050	2150	---	2150	22600	---	22600
Southeast District	200	150	0	150	935	---	935	1400	---	1400
State	7000	3100	2900	6000	1305	435	880	40400	12600	53000

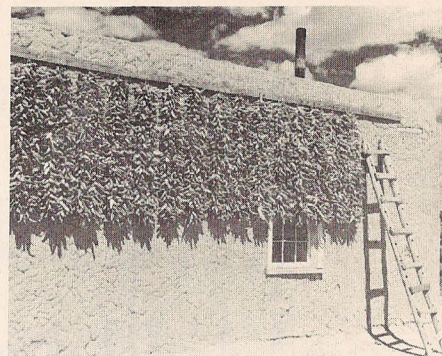
New Mexico Agricultural Statistics

ALL DRY BEANS: Acreage, yield, and production, by counties, irrigated and non-irrigated, 1964¹

County	Acres planted for all purposes	Acres harvested			Yield per harvested acre			Production		
		Irrig.	Non-irrig.	Total	Irrig.	Non-irrig.	Total	Irrig.	Non-irrig.	Total
	Acres	Acres	Acres	Acres	Pounds	Pounds	Pounds	100 lb. bags	100 lb. bags	100 lb. bags
Bernalillo	300	0	300	300	---	200	200	---	600	600
McKinley	2200	0	2000	2000	---	400	400	---	8000	8000
Rio Arriba	100	50	50	100	860	200	530	430	100	530
Sandoval	50	20	30	50	725	150	380	145	45	190
San Juan	150	150	0	150	1100	---	1100	1650	---	1650
Santa Fe	250	100	100	200	655	115	385	655	115	770
Taos	100	100	0	100	950	---	950	950	---	950
Valencia	350	100	200	300	600	105	270	600	210	810
Northwest District	3500	520	2680	3200	850	340	420	4430	9070	13500
Colfax	50	50	0	50	1000	---	1000	500	---	500
Guadalupe	100	100	0	100	700	---	700	700	---	700
Mora	50	40	10	50	700	100	580	280	10	290
Quay	100	0	100	100	---	180	180	---	180	180
Roosevelt	10	10	0	10	500	---	500	50	---	50
San Miguel	60	50	10	60	480	100	415	240	10	250
Torrance	1600	1100	300	1400	1080	200	895	11900	600	12500
Union	30	0	30	30	---	100	100	---	30	30
Northeast District	2000	1350	450	1800	1015	185	805	13670	830	14500
Hidalgo	200	150	0	150	1335	---	1335	2000	---	2000
Luna	1000	600	0	600	1585	---	1585	9500	---	9500
Socorro	100	50	0	50	1000	---	1000	500	---	500
Southwest District	1300	800	0	800	1500	---	1500	12000	---	12000
Southeast District	200	200	0	200	1000	---	1000	2000	---	2000
State	7000	2870	3130	6000	1120	315	700	32100	9900	42000

¹Preliminary

New Mexico Agricultural Statistics



LETTUCE-EARLY SPRING: Acreage, yield, and production, by counties, all irrigated, 1963 and 1964

County	1963				1964			
	Acres		Yield per harvested acre	Production	Acres		Yield per harvested acre	Production
	Planted	Harvested			Planted	Harvested		
Bernalillo	15	15	160	2400	0	0	---	---
Valencia	65	65	169	11000	115	100	160	16000
Northwest District	80	80	168	13400	115	100	160	16000
Dona Ana	500	470	265	124600	835	550	174	96000
Southeast District	500	470	265	124600	835	550	174	96000
State	580	550	250	138000	950	650	170	110000

LETTUCE-EARLY FALL: Acreage, yield, and production, by counties, all irrigated, 1963 and 1964

County	1963				1964			
	Acres		Yield per harvested acre	Production	Acres		Yield per harvested acre	Production
	Planted	Harvested			Planted	Harvested		
Bernalillo	0	0	---	---	20	20	200	4000
Santa Fe	0	0	---	---	70	40	200	8000
Valencia	320	120	163	19600	50	50	180	9000
Northwest District	320	120	163	19600	140	110	580	21000
Torrance	50	50	162	8100	135	75	246	16000
Northeast District	50	50	162	8100	135	75	246	16000
Dona Ana	630	530	278	147300	925	915	279	255000
Southeast District	630	530	278	147300	925	915	279	255000
State	1000	700	250	175000	1200	1100	265	292000

New Mexico Agricultural Statistics

TOMATOES FOR PROCESSING: Acreage, yield, and production, by counties, all irrigated, 1963 and 1964

County	1963				1964			
	Acres		Yield per harvested acre Tons	Production Tons	Acres		Yield per harvested acre Tons	Production Tons
	Planted Acres	Harvested Acres			Planted Acres	Harvested Acres		
Luna	1200	1010	11.1	11180	1300	1200	10.0	12000
Southwest District	1200	1010	11.1	11180	1300	1200	10.0	12000
Otero	100	90	19.1	1720	0	0	---	---
Southeast District	100	90	19.1	1720	0	0	---	---
State	1300	1100	11.7	12900	1300	1200	10.0	12000

TOMATOES-FRESH MARKET-LATE SUMMER: Acreage, yield, and production, by counties, all irrigated, 1963 and 1964

County	1963				1964 ¹			
	Acres		Yield per harvested acre Cwt.	Production Cwt.	Acres		Yield per harvested acre Cwt.	Production Cwt.
	Planted Acres	Harvested Acres			Planted Acres	Harvested Acres		
Bernalillo	10	10	110	1100	0	0	---	---
Sandoval	30	30	100	3000	30	30	50	1500
San Juan	20	20	110	2200	30	25	50	2750
Valencia	140	130	60	7800	80	80	80	6400
Northwest District	200	190	74	14100	140	135	79	10650
Curry	10	10	120	1200	10	0	---	---
Quay	50	50	100	5000	50	40	150	6000
Roosevelt	20	20	100	2000	20	20	100	2000
Northeast District	80	80	102	8200	80	60	133	8000
Luna	25	25	116	2900	25	20	120	2400
Sierra	25	25	140	3500	25	25	120	3000
Southwest District	50	50	128	6400	50	45	120	5400
Chaves	10	10	150	1500	10	10	150	1500
Dona Ana	10	10	150	1500	50	45	134	6050
Eddy	10	10	150	1500	10	10	150	1500
Lea	75	50	160	8000	60	50	155	7750
Otero	115	100	268	26800	150	145	187	27150
Southeast District	220	180	878	39300	280	260	169	43950
State	550	500	135	68000	550	500	135	68000

¹Preliminary.

New Mexico Agricultural Statistics

CARROTS-EARLY FALL: Acreage, yield, and production, by counties, all irrigated, 1963 and 1964

County	1963				1964			
	Acres		Yield per harvested acre Cwt.	Production Cwt.	Acres		Yield per harvested acre Cwt.	Production Cwt.
	Planted Acres	Harvested Acres			Planted Acres	Harvested Acres		
Valencia	0	0	---	---	120	120	203	24360
Northwest District	0	0	---	---	120	120	203	24360
Lea	170	170	200	34000	190	150	131	19640
Otero	10	10	100	1000	10	10	100	1000
Southeast District	180	180	195	35000	200	160	129	20640
State	180	180	195	35000	320	280	160	45000

CANTALOUPS MID-SUMMER: Acreage, yield, and production, by counties, all irrigated, 1963 and 1964

County	1963				1964			
	Acres		Yield per harvested acre Cwt.	Production Cwt.	Acres		Yield per harvested acre Cwt.	Production Cwt.
	Planted Acres	Harvested Acres			Planted Acres	Harvested Acres		
Bernalillo	20	20	60	1200	10	10	60	600
Sandoval	10	10	60	600	10	10	70	700
Santa Fe	0	0	---	---	20	20	60	1200
Valencia	60	50	60	3000	60	60	50	3000
Northwest District	90	80	60	4800	100	100	55	5500
De Baca	10	10	60	600	0	0	---	---
Quay	60	50	50	2500	45	45	70	3150
Roosevelt	30	30	50	1500	30	30	70	2100
Northeast District	100	90	51	4600	75	75	70	5250
Hidalgo	10	10	70	700	10	10	50	500
Luna	10	10	70	700	10	10	70	700
Southwest District	20	20	70	1400	20	20	60	1200
Chaves	40	40	60	2400	40	40	50	2000
Dona Ana	20	20	90	1800	15	15	70	1050
Lea	80	50	60	3000	50	50	60	3000
Southeast District	140	110	65	7200	105	105	58	6050
State	350	300	60	18000	300	300	60	18000

ONIONS-EARLY SUMMER: Acreage, yield, and production, by counties, all irrigated, 1963 and 1964

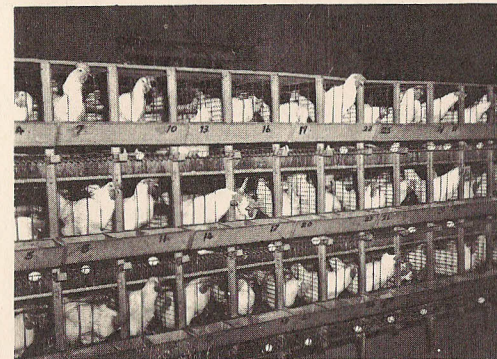
County	1962				1964			
	Acres		Yield per harvested acre	Production	Acres		Yield per harvested acre	Production
	Planted	Harvested			Planted	Harvested		
Acres	Acres	Cwt.	Cwt.	Acres	Acres	Cwt.	Cwt.	
Bernalillo	60	60	250	15000	50	50	250	12500
Santa Fe	0	0	---	----	30	20	250	5000
Valencia	20	20	250	5000	30	30	250	7500
Northwest District	80	80	250	20000	110	100	250	25000
Roosevelt	200	200	150	30000	170	165	152	25000
Torrance	0	0	---	---	30	25	160	4000
Northeast District	200	200	150	30000	200	190	153	29000
Hidalgo	30	30	277	8300	0	0	---	---
Luna	90	90	300	27000	120	100	330	33000
Sierra	20	20	250	5000	15	10	330	3300
Socorro	10	10	320	3200	15	10	330	3300
Southwest District	150	150	290	43500	150	120	330	39600
Dona Ana	1400	1300	379	492500	1700	1665	330	549000
Eddy	0	0	---	---	10	10	240	2400
Lea	270	270	200	54000	230	215	209	45000
Southeast District	1670	1570	348	546500	1940	1890	316	596400
State	2100	2000	320	640000	2400	2300	300	690000

APPLES¹: Acres, orchards, and trees 1962, and production 1963 and 1964²

County	Acres, orchards, and trees — 1962						
	Number of acres	Orchards		Trees		Production	
		Number	Percent of total	Per orchard	Per acre	1963	1964 ³
Bernalillo	180	27	3	422	63	3,000	75,000
Rio Arriba	2,080	398	42	285	54	40,000	300,000
Sandoval	450	74	8	250	41	20,000	135,000
San Juan	1,050	108	11	376	39	100,000	280,000
Santa Fe	460	133	14	181	52	16,000	40,000
Valencia	150	20	2	495	66	4,000	35,000
Northwest District	4,370	760	80	287	50	183,000	865,000
De Baca	90	12	1	283	38	1,000	20,000
Northeast District	90	12	1	283	38	1,000	20,000
Grant	230	28	3	379	46	1,000	35,000
Southwest District	230	28	3	379	46	1,000	35,000
Chaves and Otero	790	40	4	878	44	90,000	50,000
Lincoln	1,520	110	12	574	42	175,000	230,000
Southeast District	2,310	150	16	655	43	265,000	280,000
State	7,000	950	100	347	47	450,000	1,200,000

¹ Estimates for commercial counties only.

² Acres, orchards and trees refer to those orchards in commercial counties with fifty or more trees being maintained for production. Production refers to total production in commercial counties.



JANUARY 1, 1965 LIVESTOCK AND POULTRY INVENTORY

Cattle and calves on New Mexico farms and ranches totaled 1,106,000 head on January 1, 1965. This represents a decrease of 12 percent from the number on hand a year earlier. Total value of cattle and calves was \$111,706,000—a decrease of \$45,419,000 as a result of a basic herd reducing drought and lower cattle prices. Average value per head at \$101.00 was down \$24.00 from the previous year.

Milk cows and heifers, two years and older, were estimated at 43,000 head—unchanged from January 1, 1964. Milk production per cow, at 7,100 pounds was a record high. Total milk production during 1964 of 284,000,000 pounds was a 4 percent increase over the 274,000,000 pounds produced in 1963. This is the highest production since the 300,000,000 pounds produced in 1943 when there were 74,000 milk cows in the State, averaging 4,060 pounds per cow.

Stock sheep numbered 938,000 head on January 1, 1965—the smallest number on hand in the 99 years of record. Drought during the year accelerated a long term downward trend. The inventory value of \$13,601,000 showed a 4 percent decline from January 1, 1964 due to smaller numbers. New Mexico marketed 46,238,000 pounds liveweight of sheep and lambs during 1964. Cash receipts totaled \$5,924,000, down 9 percent. The lamb crop at 606,000 head was 16 percent below a year ago. Shorn wool production during 1964 totaled 9,537,000 pounds and was valued at \$4,673,000 excluding government payments.

A total of 65,000 goats were clipped in 1964, yielding 4.8 pounds of mohair per head. Cash receipts from the clip were valued at \$229,000, an increase of 21 percent from the \$189,000 clip in 1963.

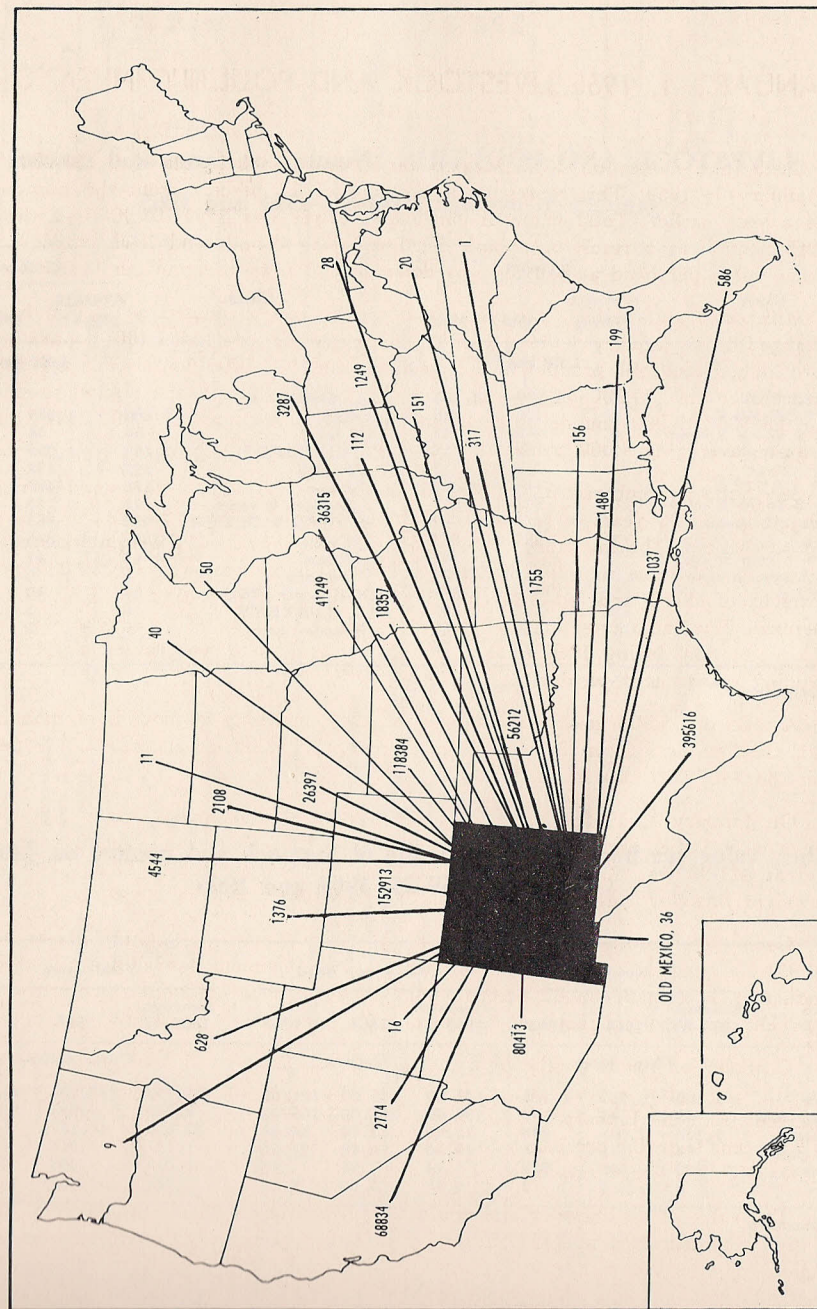
On January 1, 1965, all hog numbers totaled 44,000 head. This is 1,000 fewer than a year earlier and 10,000 head less than the 1959-63 average. Average price per head at \$21.20 was 80 cents above 1964. Hog marketings totaled 12,601,000 pounds liveweight bringing cash receipts of \$1,970,000 to the State's farmers.

Commercial production of red meat in New Mexico's slaughter plants totaled 116,911,000 pounds during 1964, an increase of 13 percent over 1963. Of the total production, beef made up 87 percent, pork about 11 percent, lamb and mutton about 2 percent and veal less than one-half of one percent.

Chickens on farms numbered 875,000 birds on January 1, 1965, down 7 percent from the same date a year earlier. Inventory value of chickens at \$866,000 was down 4 percent from the January 1, 1964 value. Chickens raised during 1964 totaled 719,000, up 7 percent from the previous year. Egg production totaled 149 million eggs, 7 percent below 1963, the lowest production since 1960.

The value of all livestock and poultry on New Mexico farms and ranches January 1, 1965 was estimated at \$127,552,000. This is a decrease of 26 percent from a year earlier.

CATTLE SHIPPED OUT OF NEW MEXICO BY STATE OF DESTINATION, 1964¹, ²



¹ From New Mexico Cattle Sanitary Board Records.
² Includes shipments from Clovis Auctions.

LIVESTOCK AND POULTRY: Number on farms and ranches
January 1, average 1959-63, 1964 and 1965

Class	Number			Class	Number		
	Average 1959-63	1964	1965 ¹		Average 1959-63	1964	1965 ¹
ALL CATTLE	1,186	1,257	1,106	ALL SHEEP & LAMBS	1,186	1,089	969
KEPT FOR MILK	68	68	66	LAMBS	58	34	31
Cows 2 years & over	45	43	43	On feed	1,128	1,055	938
Heifers 1-2 years	11	12	11	STOCK SHEEP	1,192	1,92	147
Heifer calves	12	13	12	LAMBS	170	169	124
OTHER CATTLE	1,122	1,189	1,040	Ewes	22	23	23
Cows 2 years & over	641	696	617	Wethers & rams	936	863	791
Heifers 1-2 years	110	116	99	1 YEAR & OLDER	885	816	744
Calves	289	292	253	Ewes	45	41	41
Steers 1 year & over	57	58	47	Rams	6	6	6
Bulls 1 year & over	25	27	24	Wethers	54	45	44
CHICKENS	889	945	875	HOGS AND PIGS	6	6	6
Hens	409	426	392	ALL TURKEYS	8	3	3
Pullets	457	500	465	Breeder hens	2	2	2
Other	23	19	18				

¹ Preliminary.

Number, value per head, and total value of livestock and poultry on January 1, average 1959-63, 1964 and 1965

Class	Number			Value per head			Total value		
	Average 1959-63	1964	1965 ¹	Average 1959-63	1964	1965 ¹	Average 1959-63	1964	1965 ¹
All cattle	1,186	1,257	1,106	137.00	125.00	101.00	162,123	157,125	111,706
Cows for milk	45	43	43	196.00	185.00	165.00	8,752	7,955	7,095
Stock sheep	1,128	1,035	938	15.60	13.40	14.50	17,629	14,137	13,601
Hogs & pigs	54	45	44	22.30	20.40	21.20	1,197	918	933
Chickens	889	945	875	1.14	0.95	1.01	1,012	898	866
Turkeys	8	3	3	4.48	4.00	4.15	36	12	12

¹ Preliminary.

LIVESTOCK: Inventory numbers, births, and disposition, 1962, 1963, and 1964

CATTLE AND CALVES												
Year	On hand January 1		Calves born				Marketings ²		Farm slaughter		Deaths	
	All cattle and calves	All cows 2 yrs. and older	Number	As percentage of cows 2 yrs. and older ¹	Inshipments	Cattle	Calves	Cattle	Calves	Cattle	Calves	
	Thou. head	Thou. head	Thou. head	Percent	Thou. head	Thou. head	Thou. head	Thou. head	Thou. head	Thou. head	Thou. head	
1962-----	1,221	712	598	84	365	637	271	4	5	18	40	
1963-----	1,209	718	610	85	408	641	259	5	5	19	41	
1964-----	1,257	739	621	84	277	670	306	4	6	19	44	

SHEEP AND LAMBS											
Year	On hand January 1	Lambs saved		Inshipments		Marketings ²		Farm slaughter		Deaths	
		Number	As percent of ewes 1 year and older	Sheep	Lambs	Sheep	Lambs	Sheep	Lambs	Sheep	Lambs
	Thou. head	Thou. head	Percent	Thou. head	Thou. head	Thou. head	Thou. head	Thou. head	Thou. head	Thou. head	Thou. head
1962-----	1,191	710	80	45	12	124	440	29	17	115	88
1963-----	1,145	718	83	44	17	138	461	29	17	101	89
1964-----	1,089	606	74	53	5	174	362	28	16	115	89

HOGS AND PIGS									
Year	On hand January 1	December-May		June-November		Disposition			
		Sows farrowing	Pig crop	Sows farrowing	Pig crop	Inshipments	Marketings ²	Farm slaughter	Deaths
	Thou. head	Thou. head	Thou. head	Thou. head	Thou. head	Thou. head	Thou. head	Thou. head	Thou. head
1962-----	52	5	35	6	37	---	52	14	6
1963-----	52	5	33	5	35	5	62	12	6
1964-----	45	5	31	5	35	3	55	11	4

¹ Not strictly a calving rate. Figure represents calves born expressed as a percentage of January 1 inventory of cows and heifers 2 years old and over and not the number of all cows and heifers giving birth to calves during the year.

² Excludes inter-farm sales.

LIVESTOCK: Production and income, 1962, 1963, and 1964

CATTLE AND CALVES

Year	Production	Marketings	Price per 100 pounds		Value of production	Cash receipts	Value of home consumption	Gross income	Cost of inshipments
	1 Thou. pounds		2 Thou. pounds	Cattle					
1962-----	414,300	622,565	21.30	26.70	94,287	138,531	1,131	139,662	48,897
1963-----	429,500	633,650	20.60	24.90	93,137	134,892	1,243	136,135	52,236
1964-----	398,500	664,415	16.80	20.20	71,195	116,004	943	116,947	28,358

SHEEP AND LAMBS

Year	Production	Marketings	Price per 100 pounds		Value of production	Cash receipts	Value of home consumption	Gross income	Cost of inshipments
			1 Thou. pounds	2 Thou. pounds					
1962-----	41,694	47,622	5.30	16.00	5,749	6,180	330	6,510	393
1963-----	43,102	51,210	5.70	15.70	6,017	6,512	329	6,841	464
1964-----	32,489	46,238	6.00	17.40	4,745	5,924	340	6,264	350

HOGS

Year	Production	Marketings	Price per 100 pounds	Value of production	Cash receipts	Value of home consumption	Gross income	Cost of inshipments
1962-----	15,291	11,856	16.30	2,492	1,964	514	2,478	---
1963-----	15,353	14,121	15.10	2,318	2,153	424	2,577	66
1964-----	15,001	12,601	15.40	2,310	1,970	399	2,369	40

¹ Adjustments made for inshipments and changes in inventory.
² Excludes inter-farm sales.
³ Includes receipts from marketings and from sales of farm slaughtered meat.

MILK: Production, disposition, price, and income, 1962, 1963, and 1964

Year	Milk cows on farms	Milk production per cow	Total milk production	Used on farms where produced	Disposition of milk produced				Value of sales (receipts from farm marketings)	Gross farm income from dairy products		
					Sold wholesale			Milk and cream retailed by farmers				
					Whole milk	Price per 100 pounds	Milkfat sold	Price per pound			Milk equivalent	Price per quart
1962-----	39	6,560	256	24	220	5.03	.1	56	5	22.0	12,211	13,263
1963-----	40	6,850	274	21	245	5.05	---	---	4	22.0	13,252	14,143
1964-----	40	7,100	284	19	252	5.09	---	---	6	22.0	14,147	14,948

¹ Average number on farms during year, excluding heifers not yet fresh.
² Excludes milk sucked by calves.
³ Preliminary.

CATTLE AND CALVES ON FEED: Marketings and placements, by quarters

Year and quarter	Total fed cattle marketed	Cattle and calves placed on feed	Year and quarter	Total fed cattle marketed	Cattle and calves placed on feed
1962 October 1-December 31-----	27	58	1964 January 1-March 31-----	34	33
1963 January 1-March 31-----	33	35	April 1-June 30-----	55	32
April 1-June 30-----	46	28	July 1-September 30-----	44	50
July 1-September 30-----	43	37	October 1-December 31-----	33	56
October 1-December 31-----	23	53	1965 January 1-March 31-----	37	34

CATTLE AND CALVES ON FEED: Number on feed, weight groups, classes and length of time on feed, by quarters 1961-1965

Year and month	Total cattle and calves on feed	Number on feed by weight groups				1100 pounds and over Thousand head	Number on feed by classes			Number on feed by time		
		Under 500 pounds	500-699 pounds	700-899 pounds	900-1099 pounds		Steers and steer calves	Heifers and heifer calves	Cows and others	Less than 3 months	3 to 6 months	6 months and over
Oct. 1												
1961----	47	8	18	16	4	1	19	27	1	30	15	2
1962----	55	19	20	11	4	1	21	33	1	40	12	3
1963----	64	17	22	15	8	2	28	35	1	36	22	6
1964----	76	19	26	20	9	2	45	30	1	49	23	4
Jan. 1												
1962----	64	12	20	24	6	2	29	32	3	39	21	4
1963----	86	14	27	36	8	1	47	36	3	57	27	2
1964----	94	18	28	29	16	3	49	43	2	52	32	10
1965----	99	23	32	27	15	2	45	30	1	56	40	3
Apr. 1												
1962----	66	11	24	19	11	1	32	32	2	30	33	3
1963----	88	9	28	29	19	3	46	39	3	34	45	9
1964----	93	11	35	24	18	5	50	41	2	32	49	12
1965----	96	10	32	36	16	2	54	40	2	33	47	16
July 1												
1961----	38	3	12	15	4	4	16	21	1	16	17	5
1962----	54	7	17	19	9	2	27	25	2	21	27	6
1963----	70	8	17	28	15	2	44	25	1	27	27	16
1964----	70	7	22	32	6	3	38	31	1	32	22	16

LIVESTOCK SLAUGHTER: Number slaughtered, average and total liveweight, by species, 1962, 1963, and 1964¹

Year	Cattle			Calves			Hogs			Sheep and Lambs		
	Number	Average live-weight per head	Total live-weight	Number	Average live-weight per head	Total live-weight	Number	Average live-weight per head	Total live-weight	Number	Average live-weight per head	Total live-weight
		Thou. head	Pounds		Thou. Pounds	Thou. head		Pounds	Thou. Pounds		Thou. head	Pounds
1962----	94.6	929	87,845	1.6	452	724	101.3	228	23,101	42.7	102	4,349
1963----	160.7	938	154,013	1.2	444	533	104.0	227	23,595	37.4	101	3,787
1964----	186.0	955	177,643	.8	456	365	102.9	231	23,811	36.6	101	3,701

¹Includes slaughter under Federal inspection and other commercial slaughter; excludes farm slaughter.

FARM CHICKENS: Number raised, produced, disposition, and income, 1962, 1963, and 1964¹

Year	Raised	Lqst	Produced	Consumed in farm household	Sold	Pounds produced	Pounds consumed in farm household	Pounds sold	Price per pound	Value of production	Cash receipts	Value of chickens consumed	Gross income
	Thou. head	Thou. head	Thou. head	Thou. head	Thou. head	Thou. Pounds	Thou. Pounds	Thou. Pounds	Cents	Thou. dollars	Thou. dollars	Thou. dollars	Thou. dollars
1962----	730	170	560	245	312	2,156	833	1,310	10.9	235	143	91	234
1963----	672	170	502	189	313	1,970	624	1,346	9.9	195	133	62	195
1964 ² ----	719	161	558	153	475	2,191	490	1,995	9.3	204	186	46	232

¹Does not include commercial broilers.

²Does not include young chickens lost.

³Loss during the year of chickens on hand January 1.

⁴Production is the number (or pounds) available for utilization during the year.

⁵Preliminary.

CHICKENS AND EGGS: Chickens raised, average number of layers on hand, egg production, price, and income, 1962, 1963, and 1964

Year	Chickens raised	Average yearly number layers on hand	Eggs produced	Eggs consumed in farm household	Eggs sold	Price per dozen	Cash receipts	Value of eggs consumed in farm household	Gross income
	Thou. head	Thou. head	Million eggs	Million eggs	Million eggs	Cents	Thou. dollars	Thou. dollars	Thou. dollars
1962----	730	771	157	10	147	35.6	4,361	297	4,658
1963----	672	754	160	9	151	34.5	4,341	259	4,600
1964 ¹ ----	719	738	149	8	141	33.8	3,972	225	4,197

¹Preliminary

WHITE-OWNED SHEEP: (Excludes sheep owned by Indians): Number on farms, sheep shorn, and wool production, 1962, 1963, and 1964

Year	Total sheep	Sheep on feed	Stock sheep			Sheep shorn	Average weight of fleece	Wool production
			Total	All ewes ¹	All other sheep			
			Thou. head	Thou. head	Thou. head			
1962-----	942	52	890	835	55	893	9.9	8,817
1963 ² -----	901	55	846	796	50	846	10.0	8,432
1964 ² -----	838	34	804	752	52	796	10.1	8,062

WOOL: Number sheep shorn, fleece weight, production, price, and value, 1962, 1963, and 1964

Year	Sheep shorn ³	Average weight of fleece	Production	Price per pound ⁴	Total value					
						Thou. head	Pounds	Thou. pounds	Cents	Thou. dollars
						1962-----	1,122	9.4	10,557	47
1963 ² -----	1,073	9.5	10,157	44	4,469					
1964 ² -----	1,029	9.3	9,537	49	4,673					

MOHAIR: Number of goats clipped, fleece weight, production, price, and value, 1962, 1963, and 1964

Year	Goats Clipped	Average weight of fleece	Production	Price per pound ⁴	Total value					
						Thou. head	Pounds	Thou. pounds	Cents	Thou. dollars
						1962-----	59	4.7	277	55
1963 ² -----	61	4.6	282	67	189					
1964 ² -----	65	4.8	310	74	229					

BEEES AND HONEY: Colonies, yield, production, price, and value, 1962, 1963, and 1964.

Year	Colonies of bees	Pounds per colony	Honey			Beeswax			
			Production	Price per pound	Value of production	Production	Price per pound	Value of production	
			Thou. pounds	Cents	Thou. dollars	Thou. pounds	Cents	Thou. dollars	
1962-----	10	72	720	14.2	102	245	14	42	6
1963-----	11	70	770	15.3	118	146	12	43	5
1964-----	12	75	900	15.6	140	198	12	44	5

¹ Ewes one year and over and ewe lambs.

² Preliminary.

³ Includes shearing at commercial feeding yards.

⁴ Price per pound on a marketing year basis, April-March, 1962, April-December, 1963, January-December, 1964.

CATTLE ON FEED: Number on feed, by counties, and quarters, January 1, 1963-April 1, 1965

County	Jan. 1, 1963	Apr. 1, 1963	July 1, 1963	Oct. 1, 1963	Jan. 1, 1964	Apr. 1, 1964	July 1, 1964	Oct. 1, 1964	Jan. 1, 1965	Apr. 1, 1965
Bernalillo	9000	7250	7400	8850	9300	8500	5100	5400	9400	8550
Other counties ¹	2100	1900	1950	1050	2400	2100	900	900	2800	1750
Northwest District	11100	9150	9350	9900	11700	10600	6000	6300	12200	10300
Curry	22500	21650	16300	20000	26000	25200	14900	20200	26400	29300
Pecos	1700	1650	850	600	2200	1900	1700	3400	3600	1750
Other Counties ²	3800	3400	2350	1100	1700	2800	1400	100	1300	950
Northeast District	28000	26700	19500	21700	29900	29900	18000	23700	31300	32000
Southwest District ³	2700	1800	1450	1100	2200	3000	1600	1400	3600	2400
Chaves	37200	41400	34000	25000	40000	40500	36850	36900	41650	40500
Dona Ana	3800	5350	3500	3100	5000	5000	3550	3550	41650	6650
Eddy	650	500	250	950	2200	1050	1050	1000	1500	1700
Lea	2500	2600	1600	2950	2950	2900	2900	3150	3200	2450
Other counties ¹	50	500	350	0	50	50	50	0	0	0
Southeast District	44200	50350	39700	31300	50200	49500	44400	44600	51900	51300
State	86000	88000	70000	64000	94000	93000	70000	76000	99000	96000

¹ Includes Sandoval and Santa Fe.

² Includes Grant, Hidalgo, Luna and Socorro.

³ Includes De Baca, Quay, and Torrance.

SHEEP ON FEED: Number on feed, by counties, January 1, 1962, 1963, 1964, 1965

County	1962	1963	1964		1965 ¹
			Jan. 1	July 1	
Bernalillo	3300	1900	4600	4000	4000
Other Counties	100	100	600	400	400
Northwest District	3400	2000	5200	800	800
Curry	4600	4000	2000	0	0
Other Counties	100	1800	500	1200	1200
Northeast District	4700	5800	2500	1200	1200
Southwest District	100	100	200	200	200
Chaves	30000	27500	13300	14300	14300
Eddy	2200	8300	4900	5800	5800
Lea	600	900	500	500	500
Lincoln	10900	8000	7200	6700	6700
Other Counties	100	2400	200	1500	1500
Southeast District	43800	47100	26100	28800	28800
State	52000	55000	34000	31000	31000

New Mexico Agricultural Statistics

LIVESTOCK INVENTORY: Number on farms, by counties, January 1, 1964

County	All cattle	All cows 2 years and older	Milk cows	All heifers 1-2 yrs.	Hogs	Sheep	Chickens
	Head	Head	Head	Head	Head	Head	Head
Bernalillo	14000	8000	5000	1900	1300	8500	163000
McKinley	11000	7000	100	1800	900	108000	6000
Rio Arriba	28000	17000	600	3000	1100	56000	10000
Sandoval	23000	13000	200	1200	400	5000	5000
San Juan	19000	11000	1300	1900	1400	84000	16000
Santa Fe	19000	11000	400	2200	900	4000	12000
Taos	12000	8000	500	1000	1900	23000	11000
Valencia	52000	26000	4200	5000	2800	40500	57000
Northwest District	178000	101000	12300	18000	10700	329000	280000
Colfax	61000	38000	800	5900	2000	6500	6000
Curry	54000	16000	1300	6000	3400	5000	36000
De Baca	37000	23000	500	4000	1000	25000	9000
Guadalupe	36000	25000	200	4500	500	48000	3000
Harding	39000	28000	200	3900	100	2000	2000
Mora	28000	19000	400	2000	500	15000	7000
Quay	61000	40000	1800	4900	2000	2000	21000
Roosevelt	71000	40000	10000	7100	7000	2500	44000
San Miguel	57000	34000	800	5500	500	10000	25000
Torrance	38000	24000	1400	3000	1500	32000	6000
Union	84000	49000	900	7200	1300	3000	12000
Northeast District	566000	336000	18300	54000	19800	151000	171000
Catron	42000	25000	100	3000	200	14500	2000
Grant	44000	29000	500	3700	500	2000	10000
Hidalgo	41000	22000	200	3600	1900	500	3000
Luna	28000	18000	200	3500	2000	500	31000
Sierra	25000	18000	2000	1700	600	12000	7000
Socorro	44000	27000	400	4500	200	7500	3000
Southwest District	224000	139000	3400	20000	5400	37000	56000
Chaves	76000	42000	1000	9500	2300	180000	47000
Dona Ana	23000	10000	2800	4600	1300	1500	265000
Eddy	54000	29000	2500	4800	1400	94000	72000
Lea	67000	40000	1500	8500	3000	56000	37000
Lincoln	33000	20000	400	3600	200	210000	12000
Otero	36000	22000	800	5000	900	30500	5000
Southeast District	289000	163000	9000	36000	9100	572000	438000
State	1257000	739000	43000	128000	45000	1089000	945000

New Mexico Agricultural Statistics

LIVESTOCK INVENTORY: Number on farms, by counties, January 1, 1965¹

County	All cattle	All cows 2 years and older	Milk cows	All heifers 1-2 yrs.	Hogs	Sheep	Chickens
	Head	Head	Head	Head	Head	Head	Head
Bernalillo	12000	8000	5200	2200	1200	9000	160000
McKinley	12000	9000	100	1700	900	110000	9000
Rio Arriba	26000	17000	500	2500	1100	63000	8000
Sandoval	23000	10000	200	1400	400	4000	3000
San Juan	19000	12000	1400	1900	1300	80000	8000
Santa Fe	19000	11000	400	2100	900	3000	8000
Taos	10000	6000	400	1000	1900	23000	9000
Valencia	53000	28000	4300	5200	2800	40000	25000
Northwest District	174000	101000	12500	18000	10500	332000	230000
Colfax	48000	30000	700	4600	2000	6500	4000
Curry	45000	16000	1300	4700	3300	4000	23000
De Baca	30000	22000	500	2800	1000	20000	10000
Guadalupe	30000	20000	200	3000	500	43000	4000
Harding	35000	24000	200	3500	100	1000	3000
Mora	25000	17000	300	1800	500	15000	6000
Quay	48000	31000	1600	4400	2000	2000	16000
Roosevelt	67000	39000	10200	7500	6800	4500	37000
San Miguel	43000	28000	700	4000	500	5000	25000
Torrance	32000	20000	1300	2700	1500	27000	5000
Union	61000	41000	900	5000	1300	2000	12000
Northeast District	464000	288000	17900	44000	19500	130000	145000
Catron	42000	25000	100	3500	200	14500	3000
Grant	44000	27000	500	2600	500	2000	7000
Hidalgo	40000	26000	200	3600	1500	500	4000
Luna	26000	15000	200	2800	2000	500	36000
Sierra	24000	14000	2100	2200	600	8000	8000
Socorro	41000	24000	400	4300	200	9500	3000
Southwest District	217000	131000	3500	19000	5000	35000	61000
Chaves	56000	31000	1000	9000	2200	160000	42000
Dona Ana	24000	12000	3000	3300	1300	1500	300000
Eddy	57000	27000	2500	4000	1400	67000	55000
Lea	55000	33000	1500	6000	3000	40000	30000
Lincoln	31000	19000	400	2800	200	175000	8000
Otero	28000	18000	700	3900	900	28500	4000
Southeast District	251000	140000	9100	29000	9000	472000	439000
State	1106000	660000	43000	110000	44000	969000	875000

¹Preliminary.

CROP VALUES: Farm values of production of principal crops, by counties, 1963¹

County	Wheat	Sorghum for grain	Corn for grain	Oats	Barley	Cotton and Cottonseed	All Hay	Alfalfa-seed	Broom-corn	Pota-toes
				Thousand	Dollars					
Bernalillo	9.6	2.2	22.0	2.8	12.0		583.0			
McKinley	1.9		29.0	.8	1.2		70.0			
Rio Arriba	48.0	.8	3.4	7.5	19.0		555.0			
Sandoval	7.0		17.0	2.3	.8		154.0			
San Juan	26.5		203.0	8.5	22.0		991.0			
Santa Fe	34.0		12.0	4.4	24.0		294.0			115.0
Taos	13.0		13.7	7.1	27.0		451.0			160.0
Valencia	35.0	27.0	9.9	6.6	21.0		1,326.0			92.0
Northwest District	175.0	30.0	310.0	40.0	127.0		4,424.0			413.0
Colfax	89.0	5.9	15.0	37.6	4.5		844.0			
Curry	4,357.0	6,300.0	22.5	8.8	86.0	183.4	133.0		38.0	
De Baca	2.4	59.0	3.4		3.0	3.4	410.0			
Guadalupe		1.1	3.4	1.0			77.0			
Harding	60.0	31.6	1.2	.9			27.0		38.5	
Mora	6.6	.7	5.0	7.5	3.0		531.0			
Quay	1,505.0	1,130.0	6.0	7.5	3.5	545.0	807.0	4.0	1,275.0	
Roosevelt	867.0	2,112.0	26.5	4.2	46.0	2,835.2	516.0		1,495.0	
San Miguel	9.0	5.8	17.5	3.0			236.0			509.0
Torrance	42.0	4.9	96.0		13.0		673.0			
Union	40.0	516.0	3.5	2.0	7.0		260.0		118.5	
Northeast District	6,978.0	10,167.0	200.0	72.5	166.0	3,567.0	4,514.0	4.0	2,965.0	577.0
Catron	2.0	.5	2.5	---	6.0		56.0			
Grant	4.8	22.0	13.0	6.5	17.0	24.0	260.0			
Hidalgo		400.0	8.0	2.8	127.0	2,162.5	192.0			
Luna		982.0	24.0	6.2	113.0	4,977.0	209.0			
Sierra		6.0	10.5		53.0	891.5	215.0			
Socorro	1.2	36.5	24.0		17.0	589.0	513.0			
Southwest District	8.0	1,447.0	82.0	15.5	333.0	8,644.0	1,445.0	5.6		
Chaves	10.6	363.0	38.0	28.8	487.0	9,729.5	6,934.0	212.0		
Dona Ana	1.8	40.0	13.5	2.2	227.8	20,160.0	1,574.0	113.0		
Eddy	1.2	87.0	3.4	49.0	204.0	7,403.0	4,482.0	200.4		
Lea	4.2	1,888.0	15.0	23.4	159.0	3,105.0	892.0	4.0	73.0	
Lincoln		3.0	1.6		1.2		216.0			
Otero	3.2	14.0	5.5	12.6	10.0	479.5	164.0			
Southeast District	21.0	2,395.0	77.0	116.0	1,089.0	40,877.0	14,262.0	529.4	73.0	
State	7,182.0	14,039.0	669.0	244.0	1,715.0	53,088.0	24,645.0	539.0	3,038.0	990.0

New Mexico Agricultural Statistics

¹ For some crops, county values will not add to district totals. District totals include counties for which separate estimates were not made.

CROP VALUES: Farm values of production of principal crops, by counties, 1963¹

County	Sweet-potatoes	Peanuts	Dry beans	Early spring and Early fall lettuce	Fresh market and Processing tomatoes	Carrots	Cantaloups	Onions	Apples	Total
				Thousand	Dollars					
Bernalillo			5.3	8.0	3.3		2.8	64.5	7.5	723.0
McKinley			59.0							161.9
Rio Arriba			1.4				1.3		88.0	724.4
Sandoval			1.4		10.0				50.0	242.5
San Juan			18.0		7.7				211.0	1,487.7
Santa Fe			6.0						36.0	525.4
Taos			1.9							673.7
Valencia			6.0	113.5	27.0		6.8	22.5	10.0	1,703.3
Northwest District			99.0	121.5	48.0		10.9	87.0	402.5	6,287.9
Colfax			3.2							999.2
Curry					3.6		1.2			11,133.5
De Baca									2.0	483.2
Guadalupe			4.3							86.8
Harding										159.2
Mora			3.2							557.0
Quay		16.0			17.5		5.8			5,322.3
Roosevelt	395.5	2,305.0			6.0		3.5	126.0		10,737.9
San Miguel			2.0							273.3
Torrance			68.3	28.5						1,434.7
Union			1.0							948.0
Northeast District	395.5	2,321.0	82.0	28.5	27.1		10.5	126.0	2.0	32,203.1
Catron										67.0
Grant									3.5	350.8
Hidalgo			28.0				34.0			2,954.3
Luna			113.0		366.9		1.5	113.4		6,906.0
Sierra					11.0		1.5	23.0		1,211.5
Socorro			3.0					14.4		1,198.1
Southwest District			144.0		377.9		3.0	184.8	3.5	12,693.3
Chaves				1,058.0	4.5		5.8			18,871.2
Dona Ana					4.5		4.0	2,335.2		24,476.0
Eddy					4.5	72.9				12,507.4
Lea		47.0			24.0		6.8	243.0		6,484.4
Lincoln									250.0	471.8
Otero					126.5	2.1				817.4
Southeast District	34.5	47.0	9.0	1,058.0	164.0	75.0	16.6	2,578.2	452.0	63,873.7
State	430.0	2,368.0	334.0	1,208.0	617.0	75.0	41.0	2,976.0	860.0	115,058.0

New Mexico Agricultural Statistics

¹ For some crops, county values will not add to district totals. District totals include counties for which separate estimates were not made.

CROP VALUES: Farm values of production of principal crops, by counties, 1964¹

County	Wheat	Sorghum for grain	Corn for grain	Oats	Barley	Cotton and Cottonseed	All Hay	Alfalfa- seed	Broom- corn	Pota- toes
Bernalillo	7.7		16.5		9.5		515.0			
McKinley	12.9		64.0	6.6	1.0		67.0			
Rio Arriba	46.5		5.5	4.6	12.0		408.0			
Sandoval	3.5		41.0	1.7	1.2		148.0			
San Juan	9.4		172.0	9.5	27.0		905.0			
Santa Fe	30.5	4.7	81.0	6.4	13.0		233.0			68.0
Taos	10.0	2.3	12.0	7.6	18.6		307.0			30.0
Valencia	41.5	20.0	11.0	7.6	17.7	1.9	1,032.0			81.0
Northwest District	62.0	27.0	403.0	44.0	100.0	1.9	3,615.0			211.0
Colfax	36.0	3.9	8.0	16.4	2.8		720.0			
Curry	3,098.0	5,533.0	9.5	9.1	37.0	219.4	168.0		4.9	
De Baca	9.5	57.0	5.0		3.2	40.5	531.0			
Guadalupe		1.1	5.5				86.0			
Harding	10.1	21.0					21.0			
Mora	4.2		3.0	5.0	3.0		466.0			
Quay	403.0	666.5	3.0	12.2	2.0	605.0	501.0	3.5	238.0	
Roosevelt	217.0	1,455.0	28.0		21.5	2,480.7	432.0		534.0	
San Miguel	8.7	6.5	19.0	1.2			156.0			
Torrance	26.5	5.0	183.0		10.0		594.0			343.0
Union	19.0	284.0		1.6	5.5		378.0		5.6	
Northeast District	3,832.0	8,033.0	264.0	45.0	85.0	3,345.6	4,053.0	3.5	782.5	407.0
Catron	2.2		3.0		3.5		57.0			
Grant	4.0	21.0	19.0	9.9	13.0	24.8	283.0			
Hidalgo		616.5	12.0	2.6	110.0	1,772.8	176.0			
Luna	1.6	1,130.0	26.0	8.5	102.0	4,515.4	209.0			
Sierra		3.9	10.0		62.0	705.9	242.0			
Socorro	1.7	48.6	25.0		25.5	407.3	437.0			
Southwest District	9.5	1,820.0	95.0	21.0	316.0	7,426.2	1,404.0	3.5		
Chaves	7.6	292.0	50.0	46.5	467.0	9,004.5	6,129.0	161.0		
Dona Ana	1.5	42.0	19.0	7.2	291.0	17,688.5	1,580.0	45.5		
Eddy	1.0	81.0	5.5	74.8	152.0	6,973.0	3,584.0	168.0		
Lea	1.5	1,435.0	13.5	16.2	63.5	4,654.7	924.0	3.5	5.5	
Lincoln			4.0				188.0			
Otero	3.9		11.0	15.3	6.5	367.6	183.0			
Southeast District	15.5	1,850.0	103.0	160.0	980.0	38,688.3	12,588.0	378.0	5.5	
State	4,019.0	11,730.0	865.0	270.0	1,481.0	49,462.0	21,660.0	385.0	788.0	618.0

¹ For some crops, county values will not add to district totals. District totals include counties for which separate estimates were not made.

New Mexico Agricultural Statistics

CROP VALUES: Farm values of production of principal crops, by counties, 1964¹

County	Sweet- potatoes	Peanuts	Dry Beans	Early spring and early fall lettuce	Fresh market and processing tomatoes	Carrots	Canta- loup	Onions	Apples	Total
Bernalillo			4.9	15.6			1.5	34.0	96.0	700.7
McKinley			65.0							216.5
Rio Arriba			4.4						348.0	829.0
Sandoval			1.5		4.1		1.8		177.0	379.8
San Juan			13.5		7.6				361.0	1,505.0
Santa Fe			6.3	31.2			3.0	13.0	56.0	546.1
Taos			7.8							395.3
Valencia			6.6	76.3	17.6	85.3	7.5	19.0	48.0	1,473.0
Northwest District			110.0	123.1	29.3	85.3	13.8	66.0	1,086.0	6,077.4
Colfax			4.3							791.4
Curry										9,078.9
De Baca										646.2
Guadalupe			6.0							98.6
Harding										52.1
Mora			2.5							483.7
Quay		12.8	1.5		16.5		7.9			2,472.9
Roosevelt	307.0	2,021.2	.4		5.5		5.2	68.0	32.0	7,517.5
San Miguel			2.1							193.5
Torrance			107.0	59.2				11.0		1,338.7
Union			.2							693.9
Northeast District	307.0	2,034.0	124.0	59.2	22.0		13.1	79.0	32.0	23,430.9
Catron										65.7
Grant									104.0	478.7
Hidalgo			16.8		392.6		1.2			3,100.5
Luna			81.0		8.2		1.8	79.0		6,162.5
Sierra								8.0		1,031.8
Socorro			4.2					8.0		957.3
Southwest District			102.0		400.8		3.0	95.0	104.0	11,800.0
Chaves					4.1		5.0			16,166.7
Dona Ana				1,284.7	16.6		2.6	1,560.0		22,538.6
Eddy					4.1			6.0		11,049.4
Lea		23.0			21.3	22.3	7.5	126.0		7,317.5
Lincoln									572.5	764.5
Otero					74.8	2.4				664.5
Southeast District	30.0	23.0	17.0	1,284.7	120.9	24.7	15.1	1,692.0	697.0	58,663.7
State	337.0	2,057.0	353.0	1,467.0	573.0	110.0	45.0	1,932.0	1,919.0	99,972.0

¹ For some crops, county values will not add to district totals. District totals include counties for which separate estimates were not made.

New Mexico Agricultural Statistics

LIVESTOCK INVENTORY VALUES: Farm inventory value of specified species of livestock, by counties, January 1, 1964

County	All Cattle ¹	Milk cows ²	Hogs		All Sheep		Chickens	Total
			Thousand	Dollars	Thousand	Dollars		
Bernalillo	1,750.0	925.0	26.0	112.0	156.0	2,044.0		
McKinley	1,375.0	18.0	18.0	1,447.0	5.7	2,845.7		
Rio Arriba	3,500.0	105.0	22.0	750.5	9.5	4,282.0		
Sandoval	2,875.0	35.0	8.0	67.0	4.8	2,954.8		
San Juan	2,375.0	225.0	28.0	1,125.0	15.0	3,543.0		
Santa Fe	2,375.0	76.0	18.0	53.5	11.5	2,458.0		
Taos	1,500.0	90.0	37.0	308.0	10.5	1,855.5		
Valencia	6,500.0	777.0	54.0	543.0	54.0	7,151.0		
Northwest District	22,250.0	2,251.0	211.0	4,406.0	267.0	27,134.0		
Colfax	7,625.0	149.0	40.0	87.0	5.6	7,757.6		
Curry	6,750.0	233.0	69.0	66.0	34.0	6,919.0		
De Baca	4,625.0	90.0	20.0	335.0	8.5	4,988.5		
Guadalupe	4,500.0	35.0	10.0	643.0	2.8	5,155.8		
Harding	4,875.0	36.0	2.0	27.0	1.9	4,905.9		
Mora	3,500.0	72.0	10.0	201.0	6.6	3,717.6		
Quay	7,625.0	351.0	40.0	27.0	19.5	7,711.5		
Roosevelt	8,875.0	1,880.0	142.0	33.5	41.0	9,091.5		
San Miguel	7,125.0	144.0	10.0	134.0	23.5	7,292.5		
Torrance	4,750.0	273.0	30.0	429.0	5.6	5,214.6		
Union	10,500.0	176.0	26.0	40.5	11.0	10,577.5		
Northeast District	70,750.0	3,439.0	399.0	2,023.0	160.0	73,332.0		
Catron	5,250.0	18.0	4.3	194.5	2.4	5,451.2		
Grant	5,500.0	90.0	10.7	27.0	11.0	5,548.7		
Hidalgo	5,125.0	38.0	40.0	6.5	3.0	5,174.5		
Luna	3,500.0	36.0	43.0	6.5	29.5	3,579.0		
Sierra	3,125.0	392.0	12.7	161.0	7.8	3,306.5		
Socorro	5,500.0	73.0	4.3	100.5	3.3	5,608.1		
Southwest District	28,000.0	647.0	115.0	496.0	57.0	28,668.0		
Chaves	9,500.0	180.0	48.8	2,406.0	45.0	11,999.8		
Dona Ana	2,875.0	504.0	28.0	20.0	249.0	3,172.0		
Eddy	6,750.0	460.0	30.0	1,258.0	68.0	8,106.0		
Lea	8,375.0	262.0	63.0	750.0	35.0	9,223.0		
Lincoln	4,125.0	72.0	4.2	2,811.0	12.0	6,952.2		
Otero	4,500.0	140.0	19.0	409.0	5.0	4,933.0		
Southeast District	36,125.0	1,618.0	193.0	7,654.0	414.0	44,386.0		
State	157,125.0	7,955.0	918.0	14,579.0	898.0	173,520.0		

¹Includes milk cows.
²Cows and heifers two years and over kept for milk.

LIVESTOCK INVENTORY VALUES: Farm inventory value of specified species of livestock, by counties, January 1, 1965

County	All Cattle ¹	Milk Cows ²	All			Total
			Hogs	Sheep	Chickens	
Thousand dollars						
Bernalillo	1,200.0	894.0	23.0	130.0	156.6	1,509.6
McKinley	1,200.0	17.0	18.0	1,595.0	8.8	2,821.8
Rio Arriba	2,600.0	86.0	22.0	914.0	7.8	3,543.8
Sandoval	2,300.0	34.0	8.0	58.0	2.9	2,368.9
San Juan	1,900.0	241.0	25.0	1,160.0	7.8	3,092.8
Santa Fe	1,900.0	69.0	18.0	44.0	7.8	1,969.8
Taos	1,000.0	69.0	37.0	333.0	8.8	1,378.8
Valencia	5,300.0	740.0	54.0	580.0	24.5	5,958.5
Northwest District	17,400.0	2,150.0	205.0	4,814.0	225.0	22,644.0
Colfax	4,992.0	118.0	46.0	94.0	3.9	5,135.9
Curry	4,680.0	218.0	76.0	58.0	22.0	4,836.0
De Baca	3,120.0	84.0	23.0	290.0	9.7	3,442.7
Guadalupe	3,120.0	34.0	11.0	624.0	3.9	3,758.9
Harding	3,640.0	34.0	2.0	14.0	2.9	3,658.9
Mora	2,600.0	50.0	11.0	218.0	5.8	2,834.8
Quay	4,992.0	269.0	46.0	29.0	15.5	5,082.5
Roosevelt	6,970.0	1,713.0	158.0	65.0	36.7	7,229.7
San Miguel	4,472.0	118.0	11.0	72.0	24.2	4,579.2
Torrance	3,328.0	218.0	34.0	391.0	4.8	3,757.8
Union	6,345.0	151.0	30.0	29.0	11.6	6,415.6
Northeast District	48,259.0	3,007.0	448.0	1,884.0	141.0	50,732.0
Catron	4,200.0	15.0	4.0	210.0	2.8	4,416.8
Grant	4,400.0	76.0	10.0	29.0	6.6	4,445.6
Hidalgo	4,000.0	30.0	30.0	7.0	3.8	4,040.8
Luna	2,600.0	30.0	40.0	7.0	33.5	2,680.5
Sierra	2,400.0	317.0	12.0	116.0	7.5	2,535.5
Socorro	4,100.0	60.0	4.0	138.0	2.8	4,244.8
Southwest District	21,700.0	528.0	100.0	507.0	57.0	22,364.0
Chaves	5,432.0	155.0	44.0	2,313.0	42.4	7,831.4
Dona Ana	2,328.0	465.0	26.0	22.0	302.6	2,678.6
Eddy	5,529.0	388.0	28.0	969.0	55.6	6,581.6
Lea	5,335.0	232.0	60.0	580.0	30.3	6,005.3
Lincoln	3,007.0	62.0	4.0	2,547.0	8.1	5,566.1
Otero	2,716.0	108.0	18.0	399.0	4.0	3,137.0
Southeast District	24,347.0	1,410.0	180.0	6,830.0	443.0	31,800.0
State	111,706.0	7,095.0	933.0	14,035.0	866.0	127,540.0

¹Includes milk cows.
²Cows and heifers two years old and over kept for milk.