

**NEW MEXICO
DEPARTMENT OF AGRICULTURE**

New Mexico State University
University Park, New Mexico

DALLAS RIERSON, Director

COOPERATING WITH
UNITED STATES DEPARTMENT OF AGRICULTURE
Statistical Reporting Service
Field Operation Division

COMPILED BY
NEW MEXICO CROP AND LIVESTOCK
REPORTING SERVICE

Joe D. Herman – Agricultural Statistician in Charge
Larry Losleben – Agricultural Statistician
Dale Hopkins – Agricultural Statistician
Robert L. Roebuck – Agricultural Statistician
Roy Jones – Agricultural Statistician
Fred Borum – Agricultural Statistician
Hazel M. Hobbs – Supervisory Statistical Assistant
Melvina Craig – Statistical Typist

142 S. Water Street
P. O. Drawer 580
Las Cruces, New Mexico 88001

New Mexico Agricultural Statistics

TABLE OF CONTENTS

	Pages
FOREWARD	2
PLANTING AND HARVESTING DATES	3
CLIMATE OF NEW MEXICO	4
CROP SUMMARY	5
PRINCIPAL CROP TABLES	6
FARM INCOME TABLES	7
NEW MEXICO OUTSHIPMENTS AND INSHIPMENTS OF CATTLE	36-37
LIVESTOCK SUMMARY	38
PRICES RECEIVED	55-56

STATE TABLES

STOCKS & COTTONSEED	9
LIVESTOCK	39-47

COUNTY ESTIMATES

COTTON	10-13
GRAINS	
Barley	14-15
Corn	16-17
Oats	18-19
Sorghum	20-21
Wheat	22-23
MISCELLANEOUS CROPS	
Hays	24-25
Alfalfa Seed	25
Broomcorn	26
Peanuts	27
Potatoes	27
Sweetpotatoes	27
Dry Beans	28-29
VEGETABLES	
Carrots	31
Cantaloups	31
Lettuce	32
Tomatoes	33
Onions	34
FRUIT	
Apples	34
LIVESTOCK	
Cattle	40-41
Milk Cows	40-41
Hogs	40-41
Sheep	40-41
Chickens	40-41
Cattle and Sheep on Feed	48
VALUE OF CROP PRODUCTION AND LIVESTOCK INVENTORY VALUE	
Individual and Total Value of Principal Crops	49-52
Livestock Inventory Values by Species, January 1, 1966	53-54

FOREWORD

New Mexico agriculture is faced with keeping in step with new requirements and needs of the consumer. In addition, allied industries must keep pace with changes in agriculture to meet its needs in order to adequately provide food and fiber to the people of this country and the world.

To assist all concerned, we take pride in presenting Volume V of New Mexico Agricultural Statistics, bringing up to date agricultural production by counties and production values of the major crops of New Mexico.

This work is a cooperative program of the New Mexico Department of Agriculture and the Statistical Reporting Service of the United States Department of Agriculture.

Dallas Rierson

Dallas Rierson, Director
New Mexico Department of Agriculture

USUAL PLANTING AND HARVESTING DATES

Crop	1965 harvested acreage (000)	Usual planting dates	Usual harvesting dates			Principal counties
			Begins	Most active	Ends	
BARLEY						
Fall sown		Sept. 1-Nov. 1	June 10	June 15-July 10	July 20	Chaves--Dona Ana--
Spring sown	35	Feb. 15-Apr. 1	June 20	June 25-July 15	Aug. 1	Eddy
BEANS, dry	7	May 15-June 15	Sept. 1	Sept. 10-Oct. 1	Oct. 15	McKinley--Torrance-- Luna
BROOMCORN	33	May 20-July 1	Aug. 20	Sept. 10-Oct. 10	Nov. 1	Quay--Roosevelt
CORN, all	35	Apr. 15-June 1	Sept. 15	Oct. 10-Nov. 1	Dec. 1	San Juan--Santa Fe-- Torrance
COTTON	175	Apr. 1-May 15	Sept. 25	Oct. 15-Nov. 20	Jan. 1	Chaves--Dona Ana-- Eddy
HAY, alfalfa	175		May 1		Oct. 20	Chaves--Dona Ana-- Eddy
OATS						
Fall sown		Sept. 1-Oct. 15	June 15	June 20-July 5	July 15	Chaves--Eddy--Lea--
Spring sown	6	Feb. 15-Apr. 15	July 1	July 5-July 25	Aug. 15	Colfax
PEANUTS for nuts	8.3	May 10-June 1	Oct. 1	Oct. 10-Oct. 25	Nov. 10	Roosevelt
SORGHUM						
Grain	225	May 10-July 10	Oct. 1	Oct. 10-Nov. 10	Dec. 1	Curry--Roosevelt--
Silage	17	May 10-June 20	Aug. 15	Sept. 5-Oct. 1	Oct. 20	Lea
SUGAR BEETS	2.6	Feb. 1-Mar. 15	Nov. 1	Nov. 10-Dec. 1	Dec. 15	Curry--Torrance-- Santa Fe
WHEAT, winter	201	Sept. 1-Oct. 20	June 5	June 15-July 5	July 20	Curry--Quay-- Roosevelt
<u>SEED CROPS:</u>						
ALFALFA	5.0		July 25	Aug. 15-Sept. 15	Oct. 1	Chaves--Dona Ana-- Eddy
<u>VEGETABLES:</u>						
CARROTS	.1	May 1-July 31	Aug. 1	Sept. 1-Nov. 30	Dec. 10	Valencia
LETTUCE						
Early spring	1.2	Jan. 1-Jan. 15	Apr. 25	May 1-May 31	June 5	Dona Ana
Early fall	2.5	Aug. 1-Aug. 15	Oct. 5	Oct. 10-Oct. 31	Nov. 10	Dona Ana
ONIONS						
Grano	2.2	Oct. 1-Oct. 15	May 25	June 1-Aug. 31	Oct. 15	Lea--Dona Ana-- Hidalgo--Luna
Sweet Spanish		Feb. 1-Feb. 15				
TOMATOES, all	.8	Apr. 15-May 20	Sept. 1	Sept. 1-Oct. 31	Nov. 1	Luna--Otero-- Dona Ana
POTATOES	2.2	May 1-June 15	July 25	Aug. 15-Oct. 31	Nov. 15	Santa Fe--Torrance
APPLES	---					
North			Aug. 15	Sept. 5-Oct. 20	Oct. 30	San Juan--Rio Arriba--
South			Aug. 15	Aug. 30-Oct. 15	Oct. 30	Bernalillo--Sandoval

New Mexico Agricultural Statistics
CLIMATE OF NEW MEXICO: Average first fall and last spring date of 32
degrees, days between dates, record average, precipitation 1964-1965.

County and Station	Freeze data years of record	Average first date of 32 degrees	Average last spring date of 32 degrees	Average number of days between dates	Precipitation--Inches		
					Average for period of record through 1964	1964	1955
Bernalillo							
Albuquerque	71	Oct. 26	Apr. 17	192	8.13	7.44	9.31
Sandoval							
Jemez Springs	51	Oct. 22	May 1	174	17.68	13.50	20.77
San Juan							
Shiprock	33	Oct. 14	May 1	166	6.79	7.62	10.25
Aztec Ruins Natl. Monument	50	Oct. 10	May 12	151	9.82	8.17	15.55
Santa Fe							
Santa Fe	86	Oct. 15	May 5	163	13.76	13.35	20.71
Taos							
Taos	61	Oct. 3	May 16	140	12.08	10.66	16.20
Valencia							
Los Lunas	62	Oct. 18	Apr. 23	178	7.87	6.34	10.17
San Fidel	38	Oct. 13	May 6	160	9.63	7.72	---
Colfax							
Raton	19	Sept. 28	May 9	142	14.75	10.34	22.94
Springer	66	Oct. 6	May 8	151	15.59	9.64	15.86
Curry							
Clovis	49	Oct. 28	Apr. 16	195	17.48	12.06	12.60
Melrose	20	Oct. 24	Apr. 17	190	15.13	11.19	13.40
De Baca							
Ft. Sumner	50	Oct. 23	Apr. 18	188	13.74	8.45	11.08
Alamogordo Dam	24	Oct. 29	Apr. 16	196	12.50	6.10	11.22
Guadalupe							
Santa Rosa	52	Oct. 25	Apr. 17	191	13.92	7.40	13.56
Quay							
Tucumcari	57	Oct. 27	Apr. 15	195	15.07	10.28	12.50
Ohari	35	Oct. 21	Apr. 18	186	15.80	16.28	19.98
San Jon	55	Oct. 25	Apr. 22	186	15.18	10.42	16.97
Roosevelt							
Portales	50	Oct. 19	Apr. 22	180	16.94	10.56	16.74
Elida	22	Oct. 29	Apr. 17	195	15.09	10.83	13.16
San Miguel							
Las Vegas	68	Oct. 8	May 8	153	15.94	9.21	21.42
Bell Ranch	58	Oct. 21	Apr. 20	184	14.52	9.72	17.71
Torrance							
Estancia	42	Oct. 2	May 19	136	11.87	7.76	14.40
Union							
Clayton	56	Oct. 20	Apr. 26	177	14.51	8.93	21.36
Des Moines	46	Oct. 4	May 14	143	17.91	13.15	21.39
Catron							
Quemado	33	Sept. 23	June 7	108	10.40	12.54	15.42
Grant							
Ft. Bayard	64	Oct. 24	Apr. 27	180	14.41	12.30	17.97
Hidalgo							
Lordsburg	36	Nov. 4	Apr. 3	215	10.10	10.51	12.54
Animas	34	Oct. 29	Apr. 23	189	9.99	10.00	12.31
Luna							
Deming	66	Nov. 2	Apr. 4	212	8.84	6.38	11.10
Hachita	45	Nov. 5	Apr. 10	209	9.54	14.35	11.24
Sierra							
Caballo Dam	26	Nov. 5	Apr. 3	216	8.46	6.94	7.04
Winston	16	Oct. 10	May 15	148	12.14	11.08	12.14
Hillsboro	20	Oct. 30	Apr. 16	197	10.98	9.53	10.32
Socorro							
Socorro	66	Oct. 24	Apr. 10	197	8.75	6.78	7.42
Augustine	31	Sept. 27	May 28	122	10.51	8.20	10.08
Chaves							
Roswell	69	Oct. 30	Apr. 7	206	11.62	6.98	6.68
Elk	51	Oct. 17	Apr. 30	170	15.84	8.84	14.03
Dona Ana							
State University	71	Oct. 28	Apr. 9	202	8.01	3.62	8.29
Hatch	49	Oct. 24	Apr. 10	197	8.94	4.81	7.85
Eddy							
Carlsbad	66	Nov. 5	Apr. 3	216	12.45	4.47	10.47
Artesia	54	Oct. 28	Apr. 13	198	11.33	5.15	7.70
Lea							
Livingston	39	Nov. 1	Apr. 12	203	14.89	8.31	13.31
Jal	21	Oct. 31	Apr. 5	209	11.35	6.14	8.48
Lincoln							
Ft. Stanton	64	Oct. 8	May 7	154	15.37	9.75	15.37
Corona	49	Oct. 15	May 4	164	15.87	11.81	15.70
Otero							
Alamogordo	45	Nov. 5	Apr. 6	213	9.80	6.74	13.02
Claudecroft	60	Sept. 30	May 17	136	25.74	21.33	33.93

Source: U. S. Department of Commerce, Weather Bureau State Climatologist, Albuquerque, New Mexico.

New Mexico Agricultural Statistics

1965 CROP SUMMARY

In 1965 most New Mexico farmers and ranchers enjoyed a relatively good crop year. Yields and production were up for practically all major crops grown in New Mexico. With higher yields, more production and better prices, most farmers' gross returns were well ahead of returns for the previous year. This was in contrast to the 1964 crop year when extreme drouth affecting all major farming and ranching areas, caused above-normal abandonment of crops and forced reduction of livestock numbers. This condition resulted in several New Mexico counties being classified as disaster areas in 1964, thus permitting ranchers to pasture their livestock on acreage reserve land. The drouth continued until late fall of 1964 when it was broken by excellent rains over most of the State. Moisture conditions continued to improve with above-average precipitation occurring during 1965, reviving both crop and range lands and generally contributing to an excellent crop year.

Above-average moisture conditions combined with new cropping practices, better technology, new seed varieties and increased use of fertilizers accounted for large increases in production of such crops as wheat, grain sorghum, corn and broomcorn.

Rains received in the late fall of 1964 provided adequate soil moisture for fall planting of wheat for the 1965 wheat crop. Moisture in the form of rain and snow carried the wheat through the winter in good condition and helped contribute to an increase of 78 percent in production.

Unseasonably cold weather in September delayed maturation of the cotton crop. This factor along with heavy infestation of the pink bollworm in some areas and a decrease in acreage harvested, accounted for the slight drop in yield and production of cotton in 1965. Pecan and apple production was down. The reduction in apple production was mostly due to late-spring freezes and floods in the apple-producing communities of the State.

Both sheep and cattle inventory numbers were up slightly as of January 1, 1966. Excellent moisture conditions and greatly improved range pastures in 1965 encouraged replacements in breeding herds that had been cut back during the 1964 extreme drouth. This resulted in an over-all increase in total numbers of both sheep and cattle on farms and ranches on January 1, 1966 as compared with a year earlier.

PRINCIPAL CROPS: Acreage, yield, production, price, value, average 1959-63, annual 1964 and 1965

Commodity	Unit	Acreage harvested			Yield per acre			Production			Season average price		Value of production	
		Average 1959-63	1964	1965 ¹	Average 1959-63	1964	1965 ¹	Average 1959-63	1964	1965 ¹	1964	1965 ¹	1964	1965 ¹
		Thousand Acres			See Unit Column			Thousand			Dollars		Thousand Dollars	
GENERAL CROPS														
Corn for grain	Bu.	16	11	14	37.6	57.0	55.0	571	627	770	1.38	1.42	865	1093
Corn for silage	Tons	13	17	17	14.3	16.5	15.0	184	280	255	---	---	---	---
Corn for forage	Tons	---	4	4	---	---	---	---	---	---	---	---	---	---
All wheat	Bu.	235	132	201	20.6	21.0	24.5	4920	2772	4924	1.42	1.32	3936	6500
Oats	Bu.	11	6	6	35.0	50.0	37.0	372	300	222	.90	.91	270	202
Barley	Bu.	38	34	35	43.8	44.0	46.0	1663	1496	1610	.98	1.04	1466	1674
Sorghum grain	Bu.	216	172	225	46.0	62.0	65.0	9828	10664	14625	1.10	1.01	11730	14771
Sorghum silage	Tons	21	24	17	12.3	13.0	12.0	262	312	204	---	---	---	---
Sorghum forage	Tons	59	59	54	1.94	1.50	2.40	115	88	130	23.50	20.00	2068	2600
Broomcorn	Lbs.	38	15	33	313	280	370	2,600	2,211	2,611	375.00	305.00	788	1860
Cotton lint	Lbs.	197	185	176	705	666	641	3,291	3,257	3,235	.3437	.340	44031	39833
Cottonseed	Tons	---	---	---	---	---	---	119	106	97	50.40	49.00	5342	4753
Beans, dry	Lbs.	11	6	7	650	700	560	4,677	4,422	4,399	8.50	9.30	357	363
Potatoes	Cwt.	2.7	1.7	2.2	173	170	160	466	289	352	2.14	2.47	618	869
Sweetpotatoes	Cwt.	1.4	.6	.8	94	75	75	135	45	60	7.49	5.50	337	330
Peanuts	Lbs.	7	7.7	8.3	2064	2120	2050	14,252	16,324	17,015	.126	.123	2,057	2,093
Sugar beets	Tons	.3	2.5	2.6	10.6	16.6	22.3	3.8	40.8	57.1	12.20	---	498	---
SEED CROPS														
Alfalfa seed	Lbs.	4.5	5.5	5.0	236	200	195	1075	1100	975	35.10	31.00	386	302
HAY CROPS														
All hays	Tons	225	237	271	3.18	3.21	3.01	716	760	817	28.50	23.50	21660	19200
Alfalfa hay	Tons	155	167	175	4.11	4.10	4.00	638	685	700	---	---	---	---
Clo-tim hay	Tons	13	10	11	1.32	1.20	1.45	17	12	16	---	---	---	---
Grain hay	Tons	20	21	24	1.28	1.25	1.40	26	26	34	---	---	---	---
Other tame hay	Tons	15	19	30	1.07	1.00	1.20	16	19	36	---	---	---	---
Peanut hay	Tons	1	1	1	.88	.90	.95	1	1	1	---	---	---	---
Wild hay	Tons	21	19	30	.87	.90	1.00	18	17	30	---	---	---	---
FRUITS AND NUTS														
Pecans, improved	Lbs.	---	---	---	---	---	---	6300	7800	6500	.280	.250	2184	1625
Apples	Bu.	---	---	---	---	---	---	481	1200	650	1.90	1.65	1919	879
COMMERCIAL VEGETABLES														
Cantaloups-mid-summer	Cwt.	.6	.3	.3	60	60	60	34	18	18	2.50	2.40	45	43
Carrots-early fall	Cwt.	.4	.3	.1	163	160	160	58	45	19	2.45	3.00	110	57
Lettuce-early spring	Cwt.	.7	.6	1.2	214	170	275	137	110	330	2.85	9.30	314	3069
Lettuce-early fall	Cwt.	.9	1.1	2.4	196	265	220	168	292	7,462	3.95	4.95	1153	2114
Onions-early summer	Cwt.	2.2	2.3	2.2	300	300	330	643	690	726	2.80	5.50	1932	3993
Tomatoes-late summer	Cwt.	.6	.5	.5	137	135	135	84	68	68	2.75	2.50	187	170
Tomatoes for processing	Tons	1.1	1.2	.3	11.9	10.0	11.0	13.2	12.0	3.3	32.20	32.90	386	109

New Mexico Agricultural Statistics

¹Preliminary. ²Tons. ³500 pound gross weight bales. ⁴Bags of 100 pounds. ⁵Short time average. ⁶Includes production not marketed and excluded in computing value, 190,000 bushels, 1964; 11,000 bushels, 1965. ⁷Includes production not marketed and excluded in computing value, 35,000 cwt., 1965.

New Mexico Agricultural Statistics

FARM INCOME:
Realized gross and net income of farm operators from farming, and total, 1961-1964

Item	Year			
	1961	1962	1963	1964 ¹
Number of farms	17.4	16.7	16.1	15.4
	Thousand			
	Million dollars			
Cash receipts from farm marketings	244.2	274.2	269.9	244.0
Government payments	14.1	15.0	15.5	18.7
Value of home consumption	4.8	4.4	4.4	3.9
Gross rental value of farm dwellings	6.5	6.6	6.9	7.4
TOTAL	269.5	300.2	296.7	274.1
Farm production expenses	183.4	192.5	204.5	174.5
Realized net farm income	107.7	107.7	92.2	99.6
Net changes in farm inventories	16.6	-11.0	5.4	-20.9
Total net farm income	102.7	96.7	97.6	78.8

Cash receipts from farm marketings, by commodities, 1961-1964

Commodity	Year			
	1961	1962	1963	1964 ¹
	Thousand dollars			
Cattle and calves	121,279	138,531	134,892	116,004
Sheep and lambs	6,026	6,180	6,524	5,924
Mool	4,665	4,056	4,469	4,673
Cotton lint	43,390	51,702	48,469	46,688
Cottonseed	6,330	5,430	6,164	5,075
Wheat	13,019	8,375	7,361	3,967
Sorghum grain	6,328	8,885	10,171	9,732
Hay	7,396	9,977	10,858	10,918
Broomcorn	1,567	1,999	2,617	1,823
Dry beans	535	376	290	324
Apples	665	1,283	811	2,306
Peanuts	1,897	1,891	665	1,916
Pecans	1,154	3,308	1,785	2,064
Preliminary				

New Mexico Agricultural Statistics



New Mexico Agricultural Statistics

GRAIN STOCKS: Quantities stored on and off farms, 1964, 1965, and 1966

Year	On farms				Off farms			
	Jan. 1	Apr. 1	July 1	Oct. 1	Jan. 1	Apr. 1	July 1	Oct. 1
	Thousand bushels				Thousand bushels			
WHEAT								
1964	266	95	38	305	3393	3072	2613	3004
1965	139	28	14	394	2847	2612	2467	3681
1966 ¹	197	98	---	---	3141	1373	---	---
CORN								
1964	394	182	108	69	29	20	6	6
1965	489	219	138	63	42	18	22	5
1966 ¹	693	308	---	---	20	29	---	---
OATS								
1964	73	39	6	135	11	19	15	20
1965	60	39	12	89	18	15	11	26
1966 ¹	67	33	---	---	15	17	---	---
BARLEY								
1964	223	120	51	299	27	19	23	20
1965	239	75	52	402	28	21	6	53
1966 ¹	290	97	---	---	65	48	---	---
GRAIN SORGHUM								
1964	2117	747	545	374	8144	5469	4360	3505
1965	1386	853	533	320	6458	5100	3283	2772
1966 ¹	1609	1097	---	---	6858	5020	---	---

¹ Preliminary.

HAY STOCKS: Quantities stored on farms, 1965, 1966, and 1966

1964		1965		1966 ¹	
Jan. 1	May 1	Jan. 1	May 1	Jan. 1	May 1
--- Thousand tons ---					
358	64	365	61	417	123

¹ Preliminary.

COTTONSEED: Production, farm disposition, price, and value, 1963, 1964, and 1965

Year	Production	Farm disposition			Season average price per ton	Value of production
		Sold	Used on farms ¹			
	Thou. tons	Thou. tons	Thou. tons	Dollars	Thou. dollars	
1963	112	108	4	56.10	6283	
1964	107	102	5	50.40	5141	
1965	97	93	4	49.60	4613	

¹ Includes amount used for planting crop of succeeding year.

ALL COTTON: Acreage, yield, and production, by counties irrigated and non-irrigated, 1964¹

County	Acres Planted			Acres Harvested			Yield per Harvested Acre			Production (500 pound gross weight bales)		
	Irrig.	Non-Irrig.	Total	Irrig.	Non-Irrig.	Total	Irrig.	Non-Irrig.	Total	Irrig.	Non-Irrig.	Total
	Acres	Acres	Acres	Acres	Acres	Acres	Pounds	Pounds	Pounds	Bales	Bales	Bales
Valencia	10	0	10	10	0	10	500	---	500	10	---	10
NORTHWEST DISTRICT	10	0	10	10	0	10	500	---	500	10	---	10
Curry	1110	200	1310	1080	200	1280	494	170	443	1112	71	1183
De Baca	470	0	470	440	0	440	236	---	236	217	---	217
Quay	2880	0	2880	2735	0	2735	570	---	570	3255	---	3255
Roosevelt	14190	2650	16840	13060	2350	15410	484	120	428	13253	589	13842
NORTHEAST DISTRICT	18650	2850	21500	17315	2550	19865	492	124	444	17837	660	18497
Grant	110	0	110	100	0	100	640	---	640	133	---	133
Hidalgo	6295	0	6295	5870	0	5870	782	---	782	9604	---	9604
Luna	14170	0	14170	13145	0	13145	879	---	879	24231	---	24231
Sierra	2795	0	2795	2705	0	2705	654	---	654	3693	---	3693
Socorro	2010	0	2010	1945	0	1945	537	---	537	2192	---	2192
SOUTHWEST DISTRICT	25380	0	25380	23765	0	23765	801	---	801	39853	---	39853
Chaves	31350	0	31350	29690	0	29690	772	---	772	47875	---	47875
Dona Ana	59850	0	59850	58090	0	58090	697	---	697	84619	---	84619
Eddy	26570	0	26570	25845	0	25845	695	---	695	37605	---	37605
Lea	26660	500	27160	25335	400	25935	511	90	505	27281	75	27356
Otero	2180	0	2180	1800	0	1800	581	---	581	2185	---	2185
SOUTHEAST DISTRICT	146610	500	147110	140960	400	141360	677	90	676	199565	75	199640
STATE	190650	3350	194000	182050	2950	185000	676	119	667	257265	735	258000

¹ Revised.

ALL COTTON: Acreage, yield, and production, by counties, irrigated and non-irrigated, 1965

County	Acres Planted			Acres Harvested			Yield per Harvested Acre			Production (500 pound gross weight bales)		
	Irrig.	Non-Irrig.	Total	Irrig.	Non-Irrig.	Total	Irrig.	Non-Irrig.	Total	Irrig.	Non-Irrig.	Total
	Acres	Acres	Acres	Acres	Acres	Acres	Pounds	Pounds	Pounds	Bales	Bales	Bales
Valencia	10	0	10	0	0	0	---	---	---	---	---	---
NORTHWEST DISTRICT	10	0	10	0	0	0	---	---	---	---	---	---
Curry	1240	150	1390	1215	125	1340	626	200	586	1587	51	1638
De Baca	475	0	475	450	0	450	564	---	564	531	---	531
Quay	2575	0	2575	2460	0	2460	401	---	401	2060	---	2060
Roosevelt	15135	2275	17410	14400	2100	16500	591	250	547	17764	1096	18860
NORTHEAST DISTRICT	19425	2425	21850	18525	2225	20750	567	247	533	21942	1147	23089
Grant	115	0	115	110	0	110	373	---	373	84	---	84
Hidalgo	6120	0	6120	5610	0	5610	627	---	627	7349	---	7349
Luna	14150	0	14150	13315	0	13315	783	---	783	21760	---	21760
Sierra	2755	0	2755	2645	0	2645	699	---	699	3863	---	3863
Socorro	1970	0	1970	1900	0	1900	416	---	416	1650	---	1650
SOUTHWEST DISTRICT	25110	0	25110	23580	0	23580	705	---	705	34706	---	34706
Chaves	30865	0	30865	29485	0	29485	807	---	807	49682	---	49682
Dona Ana	52830	0	52830	51470	0	51470	602	---	602	64918	---	64918
Eddy	25680	0	25680	25000	0	25000	684	---	684	35714	---	35714
Lea	24060	900	24960	22580	750	23330	479	200	470	22567	313	22880
Otero	1695	0	1695	1385	0	1385	695	---	695	2011	---	2011
SOUTHEAST DISTRICT	135130	900	136030	129920	750	130670	644	200	641	174892	313	175205
STATE	179675	3325	183000	172025	2975	175000	644	235	637	231540	1460	233000

AMERICAN-EGYPTIAN COTTON: Acreage, yield, and production by counties, all irrigated, 1964 and 1965

County	1964				1965			
	Acres		Yield per harvested acre	Production (500 pound gross weight bales)	Acres		Yield per harvested acre	Production (500 pound gross weight bales)
	Planted	Harvested	Pounds	Bales	Planted	Harvested	Pounds	Bales
Hidalgo	35	30	367	22	20	10	300	6
Luna	180	165	455	157	140	115	330	80
Sierra	275	270	470	265	210	185	141	55
SOUTHWEST DISTRICT	490	465	458	444	370	310	216	141
Chaves	70	60	550	69	45	35	457	34
Dona Ana	21680	21185	506	22429	15130	14770	412	12868
Eddy	200	140	393	115	130	80	325	54
Otero	60	50	400	43	25	5	200	3
SOUTHEAST DISTRICT	22010	21435	506	22656	15330	14890	412	12959
STATE	22500	21900	505	23100	15700	15200	408	13100

UPLAND COTTON: Acreage, yield, and production, by counties, irrigated and non-irrigated, 1964¹

County	Acres Planted			Acres Harvested			Yield per Harvested Acre			Production (500 pound gross weight bales)		
	Irrig.	Non-Irrig.	Total	Irrig.	Non-Irrig.	Total	Irrig.	Non-Irrig.	Total	Irrig.	Non-Irrig.	Total
	Acres	Acres	Acres	Acres	Acres	Acres	Pounds	Pounds	Pounds	Bales	Bales	Bales
Valencia	10	0	10	10	0	10	500	---	500	10	---	10
NORTHWEST DISTRICT	10	0	10	10	0	10	500	---	500	10	---	10
Curry	1110	200	1310	1080	200	1280	494	170	443	1112	71	1183
De Baca	470	0	470	440	0	440	236	---	236	217	---	217
Quay	2880	0	2880	2735	0	2735	570	---	570	3255	---	3255
Roosevelt	14190	2650	16840	13060	2350	15410	484	120	428	13253	589	13842
NORTHEAST DISTRICT	18650	2850	21500	17315	2550	19865	492	124	444	17837	660	18497
Grant	110	0	110	100	0	100	640	---	640	133	---	133
Hidalgo	6260	0	6260	5840	0	5840	784	---	784	9582	---	9582
Luna	13990	0	13990	12980	0	12980	885	---	885	24074	---	24074
Sierra	2520	0	2520	2435	0	2435	674	---	674	3428	---	3428
Socorro	2010	0	2010	1945	0	1945	537	---	537	2192	---	2192
SOUTHWEST DISTRICT	24890	0	24890	23300	0	23300	807	---	807	39409	---	39409
Chaves	31280	0	31280	29630	0	29630	773	---	773	47806	---	47806
Dona Ana	38170	0	38170	36905	0	36905	807	---	807	62190	---	62190
Eddy	26370	0	26370	25705	0	25705	697	---	697	37490	---	37490
Lea	26660	500	27160	25535	400	25935	511	90	505	27281	75	27356
Otero	2120	0	2120	1750	0	1750	586	---	586	2142	---	2142
SOUTHEAST DISTRICT	124600	500	125100	119525	400	119925	708	91	706	176909	75	176984
STATE	168150	3350	171500	160150	2950	163100	699	119	689	234165	735	234900

¹Revised.

UPLAND COTTON: Acreage, yield, and production, by counties, irrigated and non-irrigated, 1965

County	Acres Planted			Acres Harvested			Yield per Harvested Acre			Production (500 pound gross weight bales)		
	Irrig.	Non-Irrig.	Total	Irrig.	Non-Irrig.	Total	Irrig.	Non-Irrig.	Total	Irrig.	Non-Irrig.	Total
	Acres	Acres	Acres	Acres	Acres	Acres	Pounds	Pounds	Pounds	Bales	Bales	Bales
Valencia	10	0	10	0	0	0	---	---	---	---	---	---
NORTHWEST DISTRICT	10	0	10	0	0	0	---	---	---	---	---	---
Curry	1240	150	1390	1215	125	1340	626	200	586	1587	51	1638
De Baca	475	0	475	450	0	450	564	---	564	531	---	531
Quay	2575	0	2575	2460	0	2460	401	---	401	2060	---	2060
Roosevelt	15135	2275	17410	14400	2100	16500	591	250	547	17764	1096	18860
NORTHEAST DISTRICT	19425	2425	21850	18525	2225	20750	567	247	533	21942	1147	23089
Grant	115	0	115	110	0	110	373	---	373	84	---	84
Hidalgo	6100	0	6100	5600	0	5600	628	---	628	7343	---	7343
Luna	14010	0	14010	13200	0	13200	787	---	787	21680	---	21680
Sierra	2545	0	2545	2460	0	2460	741	---	741	3808	---	3808
Socorro	1970	0	1970	1900	0	1900	416	---	416	1650	---	1650
SOUTHWEST DISTRICT	24740	0	24740	23270	0	23270	711	---	711	34565	---	34565
Chaves	30820	0	30820	29450	0	29450	807	---	807	49648	---	49648
Dona Ana	37700	0	37700	36700	0	36700	679	---	679	52050	---	52050
Eddy	25550	0	25550	24920	0	24920	685	---	685	35660	---	35660
Lea	24060	900	24960	22580	750	23330	479	200	470	22567	313	22880
Otero	1670	0	1670	1380	0	1380	696	---	696	2008	---	2008
SOUTHEAST DISTRICT	119800	900	120700	115030	750	115780	674	200	671	161933	313	162246
STATE	163975	3325	167300	156825	2975	159800	667	235	659	218440	1460	219900

BARLEY: Acreage, yield, and production, by counties, irrigated and non-irrigated, 1964

County	Acres Planted all Purposes	Acres harvested			Yield per harvested acre			Production		
		Irrig.	Non-Irrig.	Total	Irrig.	Non-Irrig.	Total	Irrig.	Non-Irrig.	Total
Bernalillo	600	150	250	400	34.7	16.0	23.0	5200	4000	9200
McKinley	100	0	50	50	---	20.0	20.0	---	1000	1000
Rio Arriba	700	300	100	400	33.0	15.0	28.5	9900	1500	11400
Sandoval	100	30	20	50	30.0	15.0	24.0	900	300	1200
San Juan	1000	700	0	700	37.1	---	37.1	26000	---	26000
Santa Fe	700	120	480	600	41.7	16.0	21.2	5000	7700	12700
Taos	700	600	0	600	30.0	---	30.0	18000	---	18000
Valencia	1100	600	0	600	28.3	---	28.3	17000	---	17000
NORTHWEST DISTRICT	5000	2500	900	3400	32.8	16.1	28.4	82000	14500	96500
Colfax	400	100	0	100	26.0	---	26.0	2600	---	2600
Curry	5000	700	900	1600	36.4	10.3	21.7	25500	9250	34750
De Baca	400	150	0	150	20.7	---	20.7	3100	---	3100
Guadalupe	100	0	0	0	---	---	---	---	---	---
Mora	100	100	0	100	28.0	---	28.0	2800	---	2800
Quay	1500	100	0	100	20.0	---	20.0	2000	---	2000
Roosevelt	3000	600	100	700	32.5	7.5	28.9	19500	750	20250
San Miguel	300	0	0	0	---	---	---	---	---	---
Torrance	700	300	0	300	31.0	---	31.0	9300	---	9300
Union	500	150	0	150	34.7	---	34.7	5200	---	5200
NORTHEAST DISTRICT	12000	2200	1000	3200	31.8	10.0	25.0	70000	10000	80000
Catron	300	100	0	100	35.0	---	35.0	3500	---	3500
Grant	600	300	0	300	41.7	---	41.7	12500	---	12500
Hidalgo	2700	2000	0	2000	53.5	---	53.5	107000	---	107000
Luna	2700	1800	0	1800	55.0	---	55.0	99000	---	99000
Sierra	1600	1000	0	1000	60.0	---	60.0	60000	---	60000
Socorro	700	500	0	500	50.0	---	50.0	25000	---	25000
SOUTHWEST DISTRICT	8600	5700	0	5700	53.9	---	53.9	307000	---	307000
Chaves	12000	11300	0	11300	42.7	---	42.7	483000	---	483000
Dona Ana	6800	5200	0	5200	57.7	---	57.7	300000	---	300000
Eddy	5000	3500	0	3500	44.9	---	44.9	157000	---	157000
Lea	3000	1450	50	1500	44.8	15.0	43.8	65000	750	65750
Lincoln	50	0	0	0	---	---	---	---	---	---
Otero	550	150	50	200	40.0	15.0	33.8	6000	750	6750
SOUTHEAST DISTRICT	27400	21600	100	21700	46.8	15.0	46.7	1011000	1500	1012500
STATE	53000	32000	2000	34000	45.9	13.0	44.0	1470000	26000	1496000

New Mexico Agricultural Statistics

BARLEY: Acreage, yield, and production, by counties, irrigated and non-irrigated, 1965¹

County	Acres Planted all Purposes	Acres harvested			Yield per harvested acre			Production		
		Irrig.	Non-Irrig.	Total	Irrig.	Non-Irrig.	Total	Irrig.	Non-Irrig.	Total
Bernalillo	600	150	250	400	35.0	16.0	23.1	5250	4000	9250
McKinley	60	0	50	50	---	20.0	20.0	---	1000	1000
Rio Arriba	700	300	100	400	38.0	24.1	34.5	11400	2410	13810
Sandoval	170	30	20	50	50.0	15.0	36.0	1500	300	1800
San Juan	1000	800	0	800	41.2	---	41.2	32960	---	32960
Santa Fe	700	170	380	550	44.0	18.0	26.0	7480	6840	14320
Taos	650	600	0	600	33.1	---	33.1	19860	---	19860
Valencia	2100	1600	0	1600	35.0	---	35.0	56000	---	56000
NORTHWEST DISTRICT	5980	3650	800	4450	36.8	18.2	33.5	134450	14550	149000
Colfax	300	100	0	100	40.0	---	40.0	4000	---	4000
Curry	6600	1000	2000	3000	50.0	27.0	34.7	50000	54000	104000
De Baca	300	150	0	150	40.0	---	40.0	6000	---	6000
Guadalupe	80	0	0	0	---	---	---	---	---	---
Harding	20	0	0	0	---	---	---	---	---	---
Mora	70	50	0	50	55.0	---	55.0	2750	---	2750
Quay	900	0	100	100	---	18.0	18.0	---	1800	1800
Roosevelt	2300	500	100	600	33.0	9.0	29.0	16500	900	17400
San Miguel	250	0	0	0	---	---	---	---	---	---
Torrance	500	300	0	300	31.0	---	31.0	9300	---	9300
Union	500	100	0	100	42.0	---	42.0	4200	---	4200
NORTHEAST DISTRICT	11820	2200	2200	4400	42.2	25.8	34.0	92750	56700	149450
Catron	250	150	0	150	50.0	---	50.0	7500	---	7500
Grant	1100	300	0	300	45.0	---	45.0	13500	---	13500
Hidalgo	2200	1900	0	1900	54.0	---	54.0	102600	---	102600
Luna	2700	1900	0	1900	52.0	---	52.0	98800	---	98800
Sierra	1600	1000	0	1000	60.0	---	60.0	60000	---	60000
Socorro	600	550	0	550	65.0	---	65.0	35750	---	35750
SOUTHWEST DISTRICT	8450	5800	0	5800	54.9	---	54.9	318150	---	318150
Chaves	11500	9800	0	9800	45.0	---	45.0	441000	---	441000
Dona Ana	6900	6000	0	6000	57.2	---	57.2	343150	---	343150
Eddy	5000	2700	0	2700	45.0	---	45.0	121500	---	121500
Lea	2700	1450	50	1500	50.0	15.0	48.8	72500	750	73250
Lincoln	50	0	0	0	---	---	---	---	---	---
Otero	600	300	50	350	45.0	20.0	41.4	13500	1000	14500
SOUTHEAST DISTRICT	26750	20250	100	20350	49.0	17.5	48.8	991650	1750	993400
STATE	53000	31900	3100	35000	48.2	23.5	46.0	1537000	73000	1610000

New Mexico Agricultural Statistics

¹ Preliminary

CORN: Acreage, yield, and production, by counties, irrigated non-irrigated, 1964

County	Acres Planted all Purposes	Acres			Harvested for grain Yield per acre			Production		
		Irrig.	Non- Irrig.	Total	Irrig.	Non- Irrig.	Total	Irrig.	Non- Irrig.	Total
		Acres	Acres	Acres	Bushels	Bushels	Bushels	Bushels	Bushels	Bushels
Bernalillo	1000	200	0	200	60.0	---	60.0	12000	---	12000
McKinley	2400	1200	450	1650	35.0	10.9	28.4	42000	4900	46900
Rio Arriba	500	100	0	100	40.0	---	40.0	4000	---	4000
Sandoval	1200	650	50	700	44.6	5.0	41.8	29000	250	29250
San Juan	4400	1700	100	1800	73.5	6.0	69.8	125000	600	125600
Santa Fe	2000	650	50	700	89.2	20.0	84.3	58000	1000	59000
Taos	450	350	0	350	25.7	---	25.7	9000	---	9000
Valencia	1500	250	50	300	32.0	5.0	27.5	8000	250	8250
NORTHWEST DISTRICT	13500	5100	700	5800	56.3	10.0	50.7	287000	7000	294000
Colfax	2700	150	0	150	40.0	---	40.0	6000	---	6000
Curry	2700	100	0	100	70.0	---	70.0	7000	---	7000
De Baca	100	50	0	50	70.0	---	70.0	3500	---	3500
Guadalupe	200	100	0	100	40.0	---	40.0	4000	---	4000
Harding	100	0	0	0	---	---	---	---	---	---
Mora	500	50	50	100	40.0	5.0	22.5	2000	250	2250
Quay	200	50	0	50	40.0	---	40.0	2000	---	2000
Roosevelt	1000	250	50	300	80.0	5.0	67.5	20000	250	20250
San Miguel	1200	400	0	400	35.0	---	35.0	14000	---	14000
Torrance	3700	1850	100	1950	70.3	10.0	67.2	130000	1000	131000
Union	600	0	0	0	---	---	---	---	---	---
NORTHEAST DISTRICT	13000	3000	200	3200	62.8	7.5	59.4	188500	1500	190000
Catron	100	50	0	50	40.0	---	40.0	2000	---	2000
Grant	400	150	0	150	93.3	---	93.3	14000	---	14000
Hidalgo	300	100	0	100	90.0	---	90.0	9000	---	9000
Luna	550	200	0	200	90.0	---	90.0	18000	---	18000
Sierra	350	100	0	100	70.0	---	70.0	7000	---	7000
Socorro	600	300	0	300	60.0	---	60.0	18000	---	18000
SOUTHWEST DISTRICT	2300	900	0	900	75.6	---	75.6	68000	---	68000
Chaves	2200	500	0	500	72.0	---	72.0	36000	---	36000
Dona Ana	1050	200	0	200	70.0	---	70.0	14000	---	14000
Eddy	200	50	0	50	80.0	---	80.0	4000	---	4000
Lea	1400	150	0	150	66.7	---	66.7	10000	---	10000
Lincoln	100	50	0	50	60.0	---	60.0	3000	---	3000
Otero	250	150	0	150	53.3	---	53.3	8000	---	8000
SOUTHEAST DISTRICT	5200	1100	0	1100	68.2	---	68.2	75000	---	75000
STATE	34000	10100	900	11000	61.2	9.4	57.0	618500	8500	627000

CORN: Acreage, yield, and production, by counties, irrigated and non-irrigated, 1965¹

County	Acres Planted all Purposes	Acres			Harvested for grain Yield per acre			Production		
		Irrig.	Non- Irrig.	Total	Irrig.	Non- Irrig.	Total	Irrig.	Non- Irrig.	Total
		Acres	Acres	Acres	Bushels	Bushels	Bushels	Bushels	Bushels	Bushels
Bernalillo	1000	450	0	450	60.0	---	60.0	27000	---	27000
McKinley	2900	1300	1300	2600	45.0	15.0	30.0	58500	19500	78000
Rio Arriba	500	100	0	100	40.0	---	40.0	4000	---	4000
Sandoval	1100	650	50	700	50.0	6.0	46.9	32500	300	32800
San Juan	4100	1200	100	1300	73.0	6.0	67.8	87600	600	88200
Santa Fe	1900	650	50	700	90.0	16.0	84.7	58500	800	59300
Taos	450	420	0	420	30.0	---	30.0	12600	---	12600
Valencia	1400	250	50	300	35.0	5.0	30.0	8750	250	9000
NORTHWEST DISTRICT	13350	5020	1550	6570	57.7	13.8	47.3	289450	21450	310900
Colfax	3200	600	600	1200	45.0	15.0	30.0	27000	9000	36000
Curry	2800	150	50	200	75.0	6.0	57.8	11250	300	11550
De Baca	50	50	0	50	75.0	---	75.0	3750	---	3750
Guadalupe	250	200	0	200	50.0	---	50.0	10000	---	10000
Harding	100	0	0	0	---	---	---	---	---	---
Mora	200	50	20	70	50.0	19.0	41.1	2500	380	2880
Quay	200	60	40	100	45.0	17.5	34.0	2700	700	3400
Roosevelt	1000	450	50	500	85.0	5.0	77.0	38250	250	38500
San Miguel	1400	500	100	600	40.0	30.0	38.3	20000	3000	23000
Torrance	3400	1500	100	1600	69.0	10.0	65.3	103500	1000	104500
Union	450	0	0	0	---	---	---	---	---	---
NORTHEAST DISTRICT	13050	3560	960	4520	61.5	15.2	51.7	218950	14630	233580
Catron	50	30	0	30	40.0	---	40.0	1200	---	1200
Grant	400	200	0	200	93.0	---	93.0	18600	---	18600
Hidalgo	2000	400	0	400	90.0	---	90.0	36000	---	36000
Luna	1150	500	0	500	90.0	---	90.0	45000	---	45000
Sierra	400	100	0	100	50.0	---	50.0	5000	---	5000
Socorro	600	400	0	400	60.0	---	60.0	24000	---	24000
SOUTHWEST DISTRICT	4600	1630	0	1630	79.6	---	79.6	129800	---	129800
Chaves	2000	500	0	500	80.0	---	80.0	40000	---	40000
Dona Ana	1000	300	0	300	78.0	---	78.0	23400	---	23400
Eddy	250	50	0	50	84.0	---	84.0	4200	---	4200
Lea	1400	100	0	100	75.0	---	75.0	7500	---	7500
Lincoln	70	30	20	50	65.0	16.0	45.4	1950	320	2270
Otero	280	250	30	280	69.8	30.0	65.5	17450	900	18350
SOUTHEAST DISTRICT	5000	1230	50	1280	76.8	24.4	74.8	94500	1220	95720
STATE	36000	11440	2560	14000	64.0	14.6	55.0	732700	37300	770000

¹ Preliminary

OATS: Acreage, yield, and production, by counties, irrigated and non-irrigated, 1964

County	Acres Planted all Purposes	Acres harvested			Yield per harvested acre			Production		
		Irrig.	Non-Irrig.	Total	Irrig.	Non-Irrig.	Total	Irrig.	Non-Irrig.	Total
		Acres	Acres	Acres	Bushels	Bushels	Bushels	Bushels	Bushels	Bushels
Bernalillo	400	0	0	0	---	---	---	---	---	---
McKinley	1200	100	250	350	40.0	15.2	22.3	4000	3800	7800
Rio Arriba	2900	150	50	200	30.7	16.0	27.0	4600	800	5400
Sandoval	500	50	0	50	40.0	---	40.0	2000	---	2000
San Juan	800	300	0	300	38.0	---	38.0	11400	---	11400
Santa Fe	700	100	0	100	75.0	---	75.0	7500	---	7500
Taos	800	300	0	300	30.0	---	30.0	9000	---	9000
Valencia	3400	300	0	300	30.0	---	30.0	9000	---	9000
NORTHWEST DISTRICT	10700	1300	300	1600	36.5	15.3	32.6	47500	4600	52100
Colfax	4000	400	400	800	29.5	15.5	22.5	11800	6200	18000
Curry	2000	200	0	200	50.0	---	50.0	10000	---	10000
De Baca	200	0	0	0	---	---	---	---	---	---
Guadalupe	100	0	0	0	---	---	---	---	---	---
Mora	1700	200	0	200	28.0	---	28.0	5600	---	5600
Quay	300	200	0	200	67.5	---	67.5	13500	---	13500
Roosevelt	400	0	0	0	---	---	---	---	---	---
San Miguel	2500	50	0	50	26.0	---	26.0	1300	---	1300
Torrance	300	0	0	0	---	---	---	---	---	---
Union	500	50	0	50	36.0	---	36.0	1800	---	1800
NORTHEAST DISTRICT	12000	1100	400	1500	40.0	15.5	33.5	44000	6200	50200
Catron	50	0	0	0	---	---	---	---	---	---
Grant	800	200	0	200	47.0	---	47.0	9400	---	9400
Hidalgo	150	50	0	50	50.0	---	50.0	2500	---	2500
Luna	600	150	0	150	54.0	---	54.0	8100	---	8100
Sierra	100	0	0	0	---	---	---	---	---	---
Socorro	300	0	0	0	---	---	---	---	---	---
SOUTHWEST DISTRICT	2000	400	0	400	50.0	---	50.0	20000	---	20000
Chaves	1750	700	0	700	73.9	---	73.9	51700	---	51700
Dona Ana	500	100	0	100	80.0	---	80.0	8000	---	8000
Eddy	1400	1100	0	1100	75.5	---	75.5	83000	---	83000
Lea	900	300	0	300	60.0	---	60.0	18000	---	18000
Lincoln	50	0	0	0	---	---	---	---	---	---
Otero	700	300	0	300	56.7	---	56.7	17000	---	17000
SOUTHEAST DISTRICT	5300	2500	0	2500	71.1	---	71.1	177700	---	177700
STATE	30000	5300	700	6000	54.6	15.4	50.0	289200	10800	300000

New Mexico Agricultural Statistics

OATS: Acreage, yield, and production, by counties, irrigated and non-irrigated, 1965¹

County	Acres Planted all Purposes	Acres harvested			Yield per harvested acre			Production		
		Irrig.	Non-Irrig.	Total	Irrig.	Non-Irrig.	Total	Irrig.	Non-Irrig.	Total
		Acres	Acres	Acres	Bushels	Bushels	Bushels	Bushels	Bushels	Bushels
Bernalillo	500	0	0	0	---	---	---	---	---	---
McKinley	2000	150	1000	1150	40.0	20.0	22.6	6000	20000	26000
Rio Arriba	2800	100	300	400	35.0	25.0	27.5	3500	7500	11000
Sandoval	400	50	50	100	40.0	15.0	27.5	2000	750	2750
San Juan	900	400	0	400	40.0	---	40.0	16000	---	16000
Santa Fe	800	100	0	100	50.0	---	50.0	5000	---	5000
Taos	800	450	0	450	35.0	---	35.0	15750	---	15750
Valencia	2500	200	0	200	31.0	---	31.0	6200	---	6200
NORTHWEST DISTRICT	10700	1450	1350	2800	37.6	20.9	29.5	54450	98250	82700
Colfax	4600	100	200	300	25.0	15.5	18.7	2500	3100	5600
Curry	2000	200	0	200	49.0	---	49.0	9800	---	9800
De Baca	300	50	0	50	35.0	---	35.0	1750	---	1750
Guadalupe	100	50	0	50	37.0	---	37.0	1850	---	1850
Harding	100	0	50	50	---	25.0	25.0	---	1250	1250
Mora	2200	250	100	350	28.0	15.0	24.3	7000	1500	8500
Quay	150	50	0	50	40.0	---	40.0	2000	---	2000
Roosevelt	500	50	0	50	32.0	---	32.0	1600	---	1600
San Miguel	3200	50	0	50	26.0	---	26.0	1300	---	1300
Torrance	300	0	0	0	---	---	---	---	---	---
Union	300	50	0	50	36.0	---	36.0	1800	---	1800
NORTHEAST DISTRICT	13750	850	350	1200	34.8	16.7	29.5	29600	5850	35450
Catron	70	0	0	0	---	---	---	---	---	---
Grant	800	100	0	100	50.0	---	50.0	5000	---	5000
Hidalgo	150	0	0	0	---	---	---	---	---	---
Luna	600	150	0	150	45.0	---	45.0	6750	---	6750
Sierra	300	0	0	0	---	---	---	---	---	---
Socorro	600	0	0	0	---	---	---	---	---	---
SOUTHWEST DISTRICT	2520	250	0	250	47.0	---	47.0	11750	---	11750
Chaves	1750	700	0	700	53.0	---	53.0	37100	---	37100
Dona Ana	580	100	0	100	60.0	---	60.0	6000	---	6000
Eddy	1100	350	0	350	50.0	---	50.0	17500	---	17500
Lea	700	300	0	300	55.0	---	55.0	16500	---	16500
Lincoln	50	0	0	0	---	---	---	---	---	---
Otero	850	300	0	300	50.0	---	50.0	15000	---	15000
SOUTHEAST DISTRICT	5030	1750	0	1750	52.6	---	52.6	92100	---	92100
STATE	32000	4300	1700	6000	43.7	20.0	37.0	187900	34100	222000

New Mexico Agricultural Statistics

¹ Preliminary

ALL SORGHUMS: Acreage, yield, and production, by counties, irrigated and non-irrigated, 1964

County	Acres planted All purposes			Harvested for grain								
				Acres			Yield per acre			Production		
	Irrig.	Non-Irrig.	Total	Irrig.	Non-Irrig.	Total	Irrig.	Non-Irrig.	Total	Irrig.	Non-Irrig.	Total
Acres	Acres	Acres	Acres	Acres	Acres	Bushels	Bushels	Bushels	Bushels	Bushels	Bushels	Bushels
Bernalillo	300	0	300	0	0	0	---	---	---	---	---	---
Rio Arriba	100	0	100	0	0	0	---	---	---	---	---	---
Sandoval	100	0	100	0	0	0	---	---	---	---	---	---
San Juan	350	0	350	0	0	0	---	---	---	---	---	---
Santa Fe	100	0	100	60	0	60	66.7	---	66.7	4000	---	4000
Taos	50	0	50	20	0	20	100.0	---	100.0	2000	---	2000
Valencia	2000	0	2000	320	0	320	53.1	---	53.1	17000	---	17000
NORTHWEST DISTRICT	3000	0	3000	400	0	400	57.5	---	57.5	23000	---	23000
Colfax	500	2000	2500	100	0	100	35.0	---	35.0	3500	---	3500
Curry	54000	37000	91000	46000	23000	69000	105.0	8.7	72.9	4830000	199000	5029000
De Baca	800	0	800	500	0	500	104.0	---	104.0	52000	---	52000
Guadalupe	200	0	200	30	0	30	33.3	---	33.3	1000	---	1000
Harding	1400	600	2000	520	0	520	36.5	---	36.5	19000	---	19000
Mora	100	200	300	0	0	0	---	---	---	---	---	---
Quay	11500	9500	21000	8600	400	9000	69.9	11.2	67.3	601500	4500	606000
Roosevelt	27000	49000	76000	16400	23600	40000	67.0	9.5	33.1	1099000	224000	1323000
San Miguel	200	0	200	150	0	150	40.0	---	40.0	6000	---	6000
Torrance	800	200	1000	100	0	100	45.0	---	45.0	4500	---	4500
Union	3500	24500	28000	2600	5000	7600	75.2	12.5	33.9	195500	62500	258000
NORTHEAST DISTRICT	100000	123000	223000	75000	52000	127000	90.8	9.4	57.5	6812000	490000	7302000
Catron	20	0	20	0	0	0	---	---	---	---	---	---
Grant	630	0	630	250	0	250	74.4	---	74.4	18600	---	18600
Hidalgo	7600	0	7600	5200	0	5200	105.0	---	105.0	546000	---	546000
Luna	12000	0	12000	10000	0	10000	100.0	---	100.0	1000000	---	1000000
Sierra	150	0	150	50	0	50	68.0	---	68.0	3400	---	3400
Socorro	600	0	600	500	0	500	86.0	---	86.0	43000	---	43000
SOUTHWEST DISTRICT	21000	0	21000	16000	0	16000	100.7	---	100.7	1611000	---	1611000
Chaves	11000	0	11000	3500	0	3500	78.0	---	78.0	273000	---	273000
Dona Ana	1000	0	1000	500	0	500	78.0	---	78.0	39000	---	39000
Eddy	2050	0	2050	1000	0	1000	76.0	---	76.0	76000	---	76000
Lea	30500	2000	32500	23600	0	23600	56.8	---	56.8	1340000	---	1340000
Lincoln	50	0	50	0	0	0	---	---	---	---	---	---
Otero	1400	0	1400	0	0	0	---	---	---	---	---	---
SOUTHEAST DISTRICT	46000	2000	48000	28600	0	28600	60.4	---	60.4	1728000	---	1728000
STATE	170000	125000	295000	120000	52000	172000	84.8	9.4	62.0	10174000	490000	10664000

New Mexico Agricultural Statistics

ALL SORGHUMS: Acreage, yield, and production, by counties, irrigated and non-irrigated, 1965¹

County	Acres planted All purposes			Harvested for grain								
				Acres			Yield per acre			Production		
	Irrig.	Non-Irrig.	Total	Irrig.	Non-Irrig.	Total	Irrig.	Non-Irrig.	Total	Irrig.	Non-Irrig.	Total
Acres	Acres	Acres	Acres	Acres	Acres	Bushels	Bushels	Bushels	Bushels	Bushels	Bushels	Bushels
Bernalillo	300	0	300	0	0	0	---	---	---	---	---	---
Rio Arriba	100	0	100	0	0	0	---	---	---	---	---	---
Sandoval	30	170	200	0	0	0	---	---	---	---	---	---
San Juan	160	40	200	50	0	50	60.0	---	60.0	3000	---	3000
Santa Fe	100	0	100	0	0	0	---	---	---	---	---	---
Taos	100	0	100	50	0	50	70.0	---	70.0	3500	---	3500
Valencia	1050	50	1100	350	0	350	65.0	---	65.0	22750	---	22750
NORTHWEST DISTRICT	1840	260	2100	450	0	450	65.0	---	65.0	29250	---	29250
Colfax	350	1800	2150	150	0	150	40.0	---	40.0	6000	---	6000
Curry	61000	39000	100000	59000	26000	85000	108.0	24.0	82.3	6372000	624000	6996000
De Baca	600	0	600	450	0	450	104.0	---	104.0	46800	---	46800
Guadalupe	170	30	200	30	20	50	36.7	10.0	26.0	1100	200	1300
Harding	1000	1000	2000	700	600	1300	40.0	20.0	30.8	28000	12000	40000
Mora	180	220	400	100	0	100	35.0	---	35.0	3500	---	3500
Quay	10300	11200	21500	8500	4500	13000	67.0	21.7	51.3	569500	97600	667100
Roosevelt	23200	51800	75000	15000	31000	46000	73.5	21.4	38.4	1102500	663400	1765900
San Miguel	250	0	250	150	0	150	40.0	---	40.0	6000	---	6000
Torrance	780	220	1000	220	30	250	44.1	10.0	40.0	9700	300	10000
Union	3300	23000	26300	3000	11700	14700	84.0	28.5	39.8	252000	333400	585400
NORTHEAST DISTRICT	101130	128270	229400	87300	73850	161150	96.2	23.4	62.8	8397100	1730900	10128000
Catron	10	20	30	0	0	0	---	---	---	---	---	---
Grant	900	0	900	400	0	400	80.0	---	80.0	32000	---	32000
Hidalgo	10500	0	10500	8500	0	8500	94.2	---	94.2	801000	---	801000
Luna	14600	50	14650	12700	50	12750	105.0	18.0	104.7	1333500	900	1334400
Sierra	240	0	240	150	0	150	85.0	---	85.0	12750	---	12750
Socorro	630	0	630	500	0	500	90.0	---	90.0	45000	---	45000
SOUTHWEST DISTRICT	26880	70	26950	22250	50	22300	100.0	18.0	99.8	2224250	900	2225150
Chaves	10000	0	10000	5350	0	5350	65.0	---	65.0	347800	---	347800
Dona Ana	1400	100	1500	1000	0	1000	63.8	---	63.8	63800	---	63800
Eddy	1500	0	1500	1000	0	1000	71.2	---	71.2	71200	---	71200
Lea	33000	4000	37000	30000	3300	33300	55.0	24.0	51.9	1650000	79200	1729200
Lincoln	50	0	50	0	0	0	---	---	---	---	---	---
Otero	1500	0	1500	450	0	450	68.0	---	68.0	30600	---	30600
SOUTHEAST DISTRICT	47450	4100	51550	37800	3300	41100	57.2	24.0	54.6	2163400	79200	2242600
STATE	177300	132700	310000	147800	77200	225000	86.7	23.5	65.0	12814000	1811000	14625000

New Mexico Agricultural Statistics

¹Preliminary

WINTER WHEAT: Acreage, yield, and production, by counties, irrigated and non-irrigated, 1964¹

County	Acres Planted			Acres Harvested			Yield Per Harvested Acre			Production		
	Irrig.	Non-Irrig.	Total	Irrig.	Non-Irrig.	Total	Irrig.	Non-Irrig.	Total	Irrig.	Non-Irrig.	Total
	Acres	Acres	Acres	Acres	Acres	Acres	Bushels	Bushels	Bushels	Bushels	Bushels	Bushels
Bernalillo	100	1300	1400	100	250	350	33.0	8.0	15.1	3300	2000	5300
McKinley	300	200	500	300	150	450	24.0	11.3	19.8	7200	1700	8900
Rio Arriba	200	4300	4500	200	4000	4200	20.0	7.0	7.6	4000	28000	32000
Sandoval	200	100	300	100	50	150	20.0	8.0	16.0	2000	400	2400
San Juan	300	100	400	200	0	200	32.5	---	32.5	6500	---	6500
Santa Fe	450	1150	1600	350	950	1300	40.0	7.5	16.2	14000	7100	21100
Taos	450	50	500	350	0	350	20.0	---	20.0	7000	---	7000
Valencia	1000	700	1700	900	100	1000	31.1	8.0	28.8	28000	800	28800
NORTHWEST DISTRICT	3000	7900	10900	2500	5500	8000	28.8	7.3	14.0	72000	40000	112000
Colfax	1100	3600	4700	600	500	1100	33.3	9.6	22.5	20000	4800	24800
Curry	47000	99000	146000	41500	36500	78000	44.5	8.0	27.4	1846000	291000	2137000
De Baca	400	0	400	200	0	200	32.5	---	32.5	6500	---	6500
Guadalupe	100	0	100	0	0	0	---	---	---	---	---	---
Harding	250	8750	9000	200	400	600	25.0	5.0	11.7	5000	2000	7000
Mora	350	650	1000	100	200	300	17.0	6.0	9.7	1700	1200	2900
Quay	3500	66500	70000	2500	23000	25500	32.0	8.6	10.9	80000	198000	278000
Roosevelt	4000	36000	40000	2000	13000	15000	29.0	7.0	10.0	58000	91500	149500
San Miguel	500	400	900	250	0	250	24.0	---	24.0	6000	---	6000
Torrance	1100	3600	4700	400	900	1300	30.8	6.7	14.1	12300	6000	18300
Union	400	2300	2700	250	1000	1250	30.0	5.5	10.4	7500	5500	13000
NORTHEAST DISTRICT	58700	220800	279500	48000	75500	123500	42.6	7.9	21.4	2043000	600000	2643000
Catron	50	100	150	50	0	50	30.0	---	30.0	1500	---	1500
Grant	750	150	900	80	0	80	33.8	---	33.8	2700	---	2700
Hidalgo	30	0	30	0	0	0	---	---	---	---	---	---
Luna	200	0	200	30	0	30	36.7	---	36.7	1100	---	1100
Sierra	20	0	20	0	0	0	---	---	---	---	---	---
Socorro	200	0	200	40	0	40	30.0	---	30.0	1200	---	1200
SOUTHWEST DISTRICT	1250	250	1500	200	0	200	32.5	---	32.5	6500	---	6500
Chaves	500	0	500	150	0	150	34.7	---	34.7	5200	---	5200
Dona Ana	80	0	80	30	0	30	33.3	---	33.3	1000	---	1000
Eddy	20	0	20	20	0	20	35.0	---	35.0	700	---	700
Lea	300	0	300	30	0	30	33.3	---	33.3	1000	---	1000
Lincoln	50	0	50	0	0	0	---	---	---	---	---	---
Otero	100	50	150	70	0	70	37.1	---	37.1	2600	---	2600
SOUTHEAST DISTRICT	1050	50	1100	300	0	300	35.0	---	35.0	10500	---	10500
STATE	64000	229000	293000	51000	81000	132000	41.8	7.9	21.0	2132000	640000	2772000

¹ Includes a small acreage of spring wheat.

WINTER WHEAT: Acreage, yield, and production, by counties, irrigated and non-irrigated, 1965^{1, 2}

County	Acres Planted			Acres Harvested			Yield Per Harvested Acre			Production		
	Irrig.	Non-Irrig.	Total	Irrig.	Non-Irrig.	Total	Irrig.	Non-Irrig.	Total	Irrig.	Non-Irrig.	Total
	Acres	Acres	Acres	Acres	Acres	Acres	Bushels	Bushels	Bushels	Bushels	Bushels	Bushels
Bernalillo	200	1200	1400	200	200	400	33.0	10.0	21.5	6600	2000	8600
McKinley	300	200	500	300	170	470	25.0	11.2	20.0	7500	1900	9400
Rio Arriba	300	4100	4400	300	3700	4000	25.0	20.0	20.4	7500	74000	81500
Sandoval	200	100	300	150	50	200	30.0	12.0	25.5	4500	600	5100
San Juan	300	50	350	100	0	100	25.0	---	25.0	2500	---	2500
Santa Fe	600	1200	1800	500	1100	1600	40.0	14.0	22.1	20000	15400	35400
Taos	450	50	500	360	0	360	25.0	---	25.0	9000	---	9000
Valencia	1200	500	1700	1200	100	1300	35.0	15.0	33.5	42000	1500	43500
NORTHWEST DISTRICT	3550	7400	10950	3110	5320	8430	32.0	17.9	23.1	99600	95400	195000
Colfax	1000	3700	4700	700	2300	3000	30.0	15.0	18.5	21000	34500	55500
Curry	60000	88500	148500	58000	62000	120000	48.0	13.9	30.4	2784000	861800	3645800
De Baca	200	0	200	100	0	100	33.0	---	33.0	3300	---	3300
Guadalupe	100	0	100	0	0	0	---	---	---	---	---	---
Harding	2450	6550	9000	500	3500	4000	20.0	9.0	10.4	10000	31500	41500
Mora	300	700	1000	240	230	470	17.9	10.9	14.5	4300	2500	6800
Quay	5600	64400	70000	3200	37800	41000	40.0	11.5	13.7	128000	434700	562700
Roosevelt	5000	35000	40000	4500	15500	20000	40.0	9.0	16.0	180000	139500	319500
San Miguel	500	400	900	300	0	300	21.0	---	21.0	6300	---	6300
Torrance	500	4700	5200	500	1000	1500	35.0	6.0	15.7	17500	6000	23500
Union	900	2100	3000	800	750	1550	40.0	10.9	25.9	32000	8200	40200
NORTHEAST DISTRICT	76550	206050	282600	68840	123080	191920	46.3	12.3	24.5	3186400	1518700	4705100
Catron	50	50	100	50	0	50	30.0	---	30.0	1500	---	1500
Grant	450	450	900	100	0	100	38.0	---	38.0	3800	---	3800
Hidalgo	30	0	30	30	0	30	50.0	---	50.0	1500	---	1500
Luna	200	0	200	30	0	30	30.0	---	30.0	900	---	900
Sierra	20	0	20	0	0	0	---	---	---	---	---	---
Socorro	250	0	250	200	0	200	38.0	---	38.0	7600	---	7600
SOUTHWEST DISTRICT	1000	500	1500	410	0	410	37.3	---	37.3	15300	---	15300
Chaves	500	0	500	100	0	100	35.0	---	35.0	3500	---	3500
Dona Ana	30	0	30	0	0	0	---	---	---	---	---	---
Eddy	20	0	20	10	0	10	40.0	---	40.0	400	---	400
Lea	200	0	200	30	0	30	33.3	---	33.3	1000	---	1000
Lincoln	50	0	50	0	0	0	---	---	---	---	---	---
Otero	100	50	150	100	0	100	37.0	---	37.0	3700	---	3700
SOUTHEAST DISTRICT	900	50	950	240	0	240	35.8	---	35.8	8600	---	8600
STATE	82000	214000	296000	72600	128400	201000	45.6	12.6	24.5	3309900	1614100	4924000

¹ Includes a small acreage of spring wheat. ² Preliminary.

ALL HAY: Acreage, yield, and production, by counties, 1964 and 1965

County	1964			1965 ¹		
	Acres harvested	Yield per acre	Production	Acres harvested	Yield per acre	Production
	Acres	Tons	Tons	Acres	Tons	Tons
Bernalillo	5400	3.8	20600	5700	3.7	21100
McKinley	1450	1.9	2700	1800	1.8	3200
Rio Arriba	14200	1.1	16300	14500	1.2	17850
Sandoval	3500	1.7	5900	4100	1.8	7200
San Juan	11000	3.3	36200	12000	3.1	37200
Santa Fe	4100	2.3	9300	4600	2.2	10100
Taos	10200	1.2	12300	11200	1.1	12300
Valencia	14550	2.8	41300	15500	3.0	47050
NORTHWEST DISTRICT	64400	2.25	144600	69400	2.25	156000
Colfax	17200	1.4	24000	27000	1.2	33100
Curry	3200	1.8	5600	5500	3.7	20350
De Baca	3500	5.1	17700	3600	4.7	16900
Guadalupe	1200	2.4	2850	1200	2.4	2900
Harding	600	1.2	700	9400	1.0	9400
Mora	12300	1.3	15550	13100	1.3	17000
Quay	6200	2.7	16700	5500	3.3	18150
Roosevelt	4500	3.2	14400	4500	3.4	15300
San Miguel	5400	1.0	5200	5700	1.4	8000
Torrance	4200	4.7	19800	4200	4.8	20250
Union	9600	1.3	12600	10100	1.5	15200
NORTHEAST DISTRICT	67900	1.99	135100	89800	1.97	176550
Catron	600	3.2	1950	250	3.6	900
Grant	2900	3.3	9600	3450	2.8	9650
Hidalgo	1500	4.0	5950	1700	4.4	7500
Luna	1850	3.8	7100	2200	4.3	9450
Sierra	1450	5.7	8200	2100	3.8	8000
Socorro	3500	4.2	14800	7700	3.5	26950
SOUTHWEST DISTRICT	11800	4.03	47600	17400	3.59	62450
Chaves	35800	5.9	210700	35700	5.4	191300
Dona Ana	11500	4.7	54300	12000	3.8	45600
Eddy	32000	3.8	123200	31600	4.5	141750
Lea	9100	3.5	31750	10300	3.2	33050
Lincoln	2300	2.8	6450	2300	2.1	4800
Otero	2200	2.9	6300	2500	2.2	5500
SOUTHEAST DISTRICT	92900	4.66	432700	94400	4.47	422000
STATE	237000	3.21	760000	271000	3.01	817000

¹ Preliminary

ALFALFA HAY: Acreage, yield, and production, by counties, practically all irrigated.

1964 and 1965

County	1964			1965 ¹		
	Acres harvested	Yield per acre	Production	Acres harvested	Yield per acre	Production
	Acres	Tons	Tons	Acres	Tons	Tons
McKinley	4700	1.2	5600	4800	1.0	4800
Sandoval	2400	2.0	4800	2800	2.5	7000
San Juan	9900	3.5	34650	10500	3.3	34650
Santa Fe	3500	2.5	8800	3700	2.7	9990
Taos	6200	1.2	7450	6300	1.8	11340
Valencia	12550	3.1	38300	13000	3.5	45500
NORTHWEST DISTRICT	45000	2.70	121300	47300	2.96	140080
Colfax	7200	2.0	14700	8000	1.7	13600
Curry	600	5.0	3000	680	6.4	4350
De Baca	2500	6.5	16250	2800	5.0	14000
Guadalupe	1100	2.5	2750	1100	2.5	2750
Harding	200	2.5	500	300	2.7	810
Mora	2800	2.5	7000	2900	2.0	5800
Quay	5000	3.0	15000	4700	3.7	17390
Roosevelt	2100	5.5	11600	2200	5.0	11000
San Miguel	2100	1.2	2500	2200	1.8	3960
Torrance	3400	5.5	18700	3200	5.5	17600
Union	2500	2.5	5000	2000	2.5	5000
NORTHEAST DISTRICT	29000	3.3	97000	30500	3.2	96260
Catron	300	5.2	1550	200	4.0	800
Grant	2200	4.0	8800	2500	3.0	7500
Hidalgo	1000	5.0	5000	1100	5.0	5500
Luna	1250	5.0	6250	1400	5.0	7000
Sierra	1350	6.0	8100	1600	4.0	6400
Socorro	2900	4.8	13900	5000	4.5	22500
SOUTHWEST DISTRICT	9000	4.87	43800	11820	4.23	50000
Chaves	33700	6.2	208000	33700	5.6	188720
Dona Ana	10700	5.0	53500	11300	4.0	45200
Eddy	30700	4.0	121900	31200	4.5	140400
Lea	6400	4.5	28800	6800	4.5	30600
Lincoln	1300	4.2	5400	1300	3.0	3900
Otero	1200	4.4	5300	1500	3.2	4800
SOUTHEAST DISTRICT	84000	5.03	422900	85800	4.82	413660
STATE	167000	4.10	685000	175000	4.00	700000

ALFALFA SEED: Acreage, yield, and production, by counties, all irrigated, 1964 and 1965

County	1964			1965 ¹		
	Acres harvested	Yield per acre	Production	Acres harvested	Yield per acre	Production
	Acres	Pounds	Pounds	Acres	Pounds	Pounds
Quay	50	200	10000	50	225	11250
NORTHEAST DISTRICT	50	200	10000	50	225	11250
SOUTHWEST DISTRICT	50	200	10000	50	200	10000
Chaves	2350	196	460000	2100	190	399000
Dona Ana	400	325	130000	500	325	162500
Eddy	2600	185	480000	2300	171	392250
Lea	50	200	10000	0	---	---
SOUTHEAST DISTRICT	5400	200	1080000	4900	195	953750
STATE	5500	200	1100000	5000	195	975000

¹ Preliminary

POTATOES: Acreage, yield, and production, by counties, all irrigated, 1964 and 1965

County	1964				1965 ¹			
	Acres		Yield per harvested acre	Production	Acres		Yield per harvested acre	Production
	Planted	Harvested			Planted	Harvested		
	Acres	Acres	Cwt.	Cwt.	Acres	Acres	Cwt.	Cwt.
Santa Fe	160	160	200	32000	400	370	200	74000
Taos	250	200	70	14000	100	100	70	7000
Valencia	200	200	190	38000	200	190	179	34000
Other Counties	190	140	107	15000	0	0	---	---
NORTHWEST DISTRICT	800	700	141	99000	700	660	174	115000
Torrance	800	800	200	160000	1480	1420	155	220000
Other Counties	200	200	150	30000	120	120	142	17000
NORTHEAST DISTRICT	1000	1000	190	190000	1600	1540	154	237000
STATE	1800	1700	170	289000	2300	2200	160	352000

SWEETPOTATOES: Acreage, yield, and production, by counties, all irrigated, 1964 and 1965

County	1964				1965			
	Acres		Yield per harvested acre	Production	Acres		Yield per harvested acre	Production
	Planted	Harvested			Planted	Harvested		
	Acres	Acres	Cwt.	Cwt.	Acres	Acres	Cwt.	Cwt.
Roosevelt	750	550	75	41000	750	750	75	56000
NORTHEAST DISTRICT	750	550	75	41000	750	750	75	56000
SOUTHEAST DISTRICT	50	50	80	4000	50	50	80	4000
STATE	800	600	75	45000	800	800	75	60000

PEANUTS PICKED AND THRESHED: Acreage, yield, and production, by counties, all irrigated, 1964 and 1965

County	1964			1965		
	Acres harvested	Yield per acre	Production	Acres harvested	Yield per acre	Production
Quay	85	1200	102000	100	1300	130000
Roosevelt	7395	2167	16025000	7950	2096	16660000
NORTHEAST DISTRICT	7480	2156	16127000	8050	2086	16790000
Lea	220	895	197000	250	900	225000
SOUTHEAST DISTRICT	220	895	197000	250	900	225000
STATE	7700	2120	16324000	8300	2050	17015000

¹ Preliminary

BROOMCORN: Acreage, yield, and production, by counties, irrigated and non-irrigated, 1964

County	Acres planted			Acres harvested			Yield per harvested acre			Production		
	Acres	Irrig.	Non-Irrig.	Acres	Irrig.	Non-Irrig.	Pounds	Irrig.	Non-Irrig.	Pounds	Irrig.	Non-Irrig.
Curry	350	50	0	50	520	---	520	13	---	---	---	
Guadalupe	250	0	0	0	---	---	---	---	---	---	---	
Quay	10100	2500	3550	6050	355	105	210	445	---	---	---	
Roosevelt	14000	5200	3400	8600	470	120	330	1222	---	---	---	
Union	2000	0	250	250	---	---	120	---	---	---	---	
NORTHEAST DISTRICT	26700	7750	7200	14950	435	110	280	1680	---	---	---	
Lea	300	50	0	50	600	---	600	15	---	---	---	
SOUTHEAST DISTRICT	300	50	0	50	600	---	600	15	---	---	---	
STATE	27000	7800	7200	15000	435	110	280	1695	---	---	---	

BROOMCORN: Acreage, yield, and production, by counties, irrigated and non-irrigated, 1965¹

County	Acres planted			Acres harvested			Yield per harvested acre			Production		
	Acres	Irrig.	Non-Irrig.	Acres	Irrig.	Non-Irrig.	Pounds	Irrig.	Non-Irrig.	Pounds	Irrig.	Non-Irrig.
Curry	800	20	730	750	200	295	290	2	108	110	---	
Guadalupe	150	0	50	50	---	---	160	---	4	4	---	
Harding	600	50	500	550	480	325	340	12	81	93	---	
Quay	12200	3000	8800	11800	400	280	310	600	1232	1832	---	
Roosevelt	17500	5530	11820	17350	695	275	410	1922	1625	3547	---	
Union	2100	100	1800	1900	440	320	325	22	288	310	---	
NORTHEAST DISTRICT	33350	8700	23700	32400	590	280	365	2558	3338	3896	---	
Lea	650	600	0	600	680	---	680	204	---	204	---	
SOUTHEAST DISTRICT	650	600	0	600	680	---	680	204	---	204	---	
STATE	34000	9300	23700	33000	595	280	370	2762	3338	6100	---	

¹ Preliminary

ALL DRY BEANS: Acreage, yield, and production, by counties, irrigated and non-irrigated, 1964

County	Acres Planted all Purposes	Acres harvested			Yield per harvested acre			Production		
		Irrig.	Non-Irrig.	Total	Irrig.	Non-Irrig.	Total	Irrig.	Non-Irrig.	Total
		Acres	Acres	Acres	Pounds	Pounds	Pounds	100 lb. bags	100 lb. bags	100 lb. bags
Bernalillo	300	0	300	300	---	200	200	---	600	600
McKinley	2200	0	2000	2000	---	400	400	---	8000	8000
Rio Arriba	100	50	50	100	860	200	530	430	100	530
Sandoval	50	20	30	50	725	150	380	145	45	190
San Juan	150	150	0	150	1100	---	1100	1650	---	1650
Santa Fe	250	100	100	200	655	115	385	655	115	770
Taos	100	100	0	100	950	---	950	950	---	950
Valencia	350	100	200	300	600	105	270	600	210	810
NORTHWEST DISTRICT	3500	520	2680	3200	850	340	420	4430	970	13500
Colfax	50	50	0	50	1000	---	1000	500	---	500
Guadalupe	100	100	0	100	700	---	700	700	---	700
Mora	50	40	10	50	700	100	580	280	10	290
Quay	100	0	100	100	---	180	180	---	180	180
Roosevelt	10	10	0	10	500	---	500	50	---	50
San Miguel	60	50	10	60	480	100	415	240	10	250
Torrance	1600	1100	300	1400	1080	200	895	11900	600	12500
Union	30	0	30	30	---	100	100	---	30	30
NORTHEAST DISTRICT	2000	1350	450	1800	1015	185	805	13670	830	14500
Hidalgo	200	150	0	150	1335	---	1335	2000	---	2000
Luna	1000	600	0	600	1585	---	1585	9500	---	9500
Socorro	100	50	0	50	1000	---	1000	500	---	500
SOUTHWEST DISTRICT	1300	800	0	800	1500	---	1500	12000	---	12000
SOUTHEAST DISTRICT	200	200	0	200	1000	---	1000	2000	---	2000
STATE	7000	2870	3130	6000	1120	315	700	32100	9900	42000

ALL DRY BEANS: Acreage, yield, and production, by counties, irrigated and non-irrigated, 1965¹

County	Acres Planted all Purposes	Acres harvested			Yield per harvested acre			Production		
		Irrig.	Non-Irrig.	Total	Irrig.	Non-Irrig.	Total	Irrig.	Non-Irrig.	Total
		Acres	Acres	Acres	Pounds	Pounds	Pounds	100 lb. bags	100 lb. bags	100 lb. bags
Bernalillo	550	0	550	550	---	200	200	---	1100	1100
McKinley	2100	0	2100	2100	---	300	300	---	6300	6300
Rio Arriba	100	50	50	100	400	200	300	200	100	300
Sandoval	30	0	30	30	---	200	200	---	60	60
San Juan	250	250	0	250	700	---	700	1750	---	1750
Santa Fe	100	0	100	100	---	200	200	---	200	200
Taos	80	80	0	80	670	---	670	535	---	535
Valencia	300	100	200	300	400	100	200	400	200	600
NORTHWEST DISTRICT	3510	480	3030	3510	600	265	310	2885	7960	10845
Colfax	240	50	190	240	1000	200	370	500	380	880
Curry	200	200	0	200	580	---	580	1160	---	1160
Guadalupe	100	100	0	100	700	---	700	700	---	700
Quay	20	20	0	20	350	---	350	70	---	70
Roosevelt	40	20	20	40	300	150	225	60	30	90
San Miguel	120	100	20	120	500	150	440	500	30	530
Torrance	1400	1100	300	1400	1000	200	830	11000	600	11600
NORTHEAST DISTRICT	2120	1590	530	2120	880	195	710	13990	1040	15030
Hidalgo	200	200	0	200	800	---	800	1605	---	1605
Luna	1000	1000	0	1000	1050	---	1050	10500	---	10500
Socorro	80	80	0	80	600	---	600	480	---	480
SOUTHWEST DISTRICT	1280	1280	0	1280	985	---	985	12585	---	12585
SOUTHEAST DISTRICT	90	60	30	90	800	200	600	480	60	540
STATE	7000	3410	3590	7000	880	250	560	29940	9060	39000

¹ Preliminary



CARROTS-EARLY FALL: Acreage, yield, and production, by counties, all irrigated, 1964 and 1965

County	1964				1965			
	Acres		Yield per harvested acre		Acres		Yield per harvested acre	
	Planted	Harvested	Production	Production	Planted	Harvested	Production	Production
	Acres	Acres	Cwt.	Cwt.	Acres	Acres	Cwt.	Cwt.
Valencia	120	120	203	24360	250	120	160	19000
NORTHWEST DISTRICT	120	120	203	24360	250	120	160	19000
Lea	190	150	131	19640	0	0	---	---
Otero	10	10	100	1000	0	0	---	---
SOUTHEAST DISTRICT	200	160	129	20640	0	0	---	---
STATE	320	280	160	45000	250	120	160	19000

CANTALOUPS MID-SUMMER: Acreage, yield, and production, by counties, all irrigated, 1964 and 1965

County	1964				1965			
	Acres		Yield per harvested acre		Acres		Yield per harvested acre	
	Planted	Harvested	Production	Production	Planted	Harvested	Production	Production
	Acres	Acres	Cwt.	Cwt.	Acres	Acres	Cwt.	Cwt.
Bernalillo	10	10	60	600	10	10	60	600
Sandoval	10	10	70	700	10	10	60	600
Santa Fe	20	20	60	1200	20	15	60	900
Valencia	60	60	50	3000	50	45	62	2800
NORTHWEST DISTRICT	100	100	55	5500	90	80	61	4900
De Baca	0	0	---	---	15	15	60	900
Quay	45	45	70	3150	65	50	56	2800
Roosevelt	30	30	70	2100	30	25	58	1450
NORTHEAST DISTRICT	75	75	70	5250	110	90	57	5150
Hidalgo	10	10	50	500	10	10	70	700
Luna	10	10	70	700	10	10	70	700
SOUTHWEST DISTRICT	20	20	60	1200	20	20	70	1400
Chaves	40	40	50	2000	40	35	60	2100
Dona Ana	15	15	70	1050	30	25	64	1600
Lea	50	50	60	3000	60	50	57	2850
SOUTHEAST DISTRICT	105	105	58	6050	130	110	59	6550
STATE	300	300	60	18000	350	300	60	18000

New Mexico Agricultural Statistics

LETTUCE-EARLY SPRING: Acreage, yield, and production, by counties, all irrigated, 1961 and 1965

County	1964 ¹				1965 ²			
	Acres		Yield per harvested acre	Production	Acres		Yield per harvested acre	Production
	Planted	Harvested			Planted	Harvested		
	Acres	Acres	Cwt.	Cwt.	Acres	Acres	Cwt.	Cwt.
Bernalillo	0	0	---	---	10	10	200	2000
Valencia	115	100	150	15000	90	90	200	18000
NORTHWEST DISTRICT	115	100	150	15000	100	100	200	20000
Dona Ana	835	550	172	95000	1200	1100	282	310000
SOUTHEAST DISTRICT	835	550	172	95000	1200	1100	282	310000
STATE	950	650	170	110000	1300	1200	275	330000

LETTUCE-EARLY FALL: Acreage, yield, and production, by counties, all irrigated, 1964 and 1965

County	1964 ¹				1965 ²			
	Acres		Yield per harvested acre	Production	Acres		Yield per harvested acre	Production
	Planted	Harvested			Planted	Harvested		
	Acres	Acres	Cwt.	Cwt.	Acres	Acres	Cwt.	Cwt.
Bernalillo	20	20	200	4000	20	20	110	2200
Santa Fe	70	40	200	8000	0	0	---	---
Valencia	50	50	180	9000	530	500	130	64900
NORTHWEST DISTRICT	140	110	191	21000	550	520	129	67100
Torrance	135	75	213	16000	300	280	105	29400
NORTHEAST DISTRICT	135	75	213	16000	300	280	105	29400
Dona Ana	925	915	279	255000	1850	1700	215	365500
SOUTHWEST DISTRICT	925	915	279	255000	1850	1700	215	365500
STATE	1200	1100	265	292000	2700	2500	185	462000

¹ Revised.
² Preliminary.

New Mexico Agricultural Statistics

TOMATOES-FRESH MARKET-LATE SUMMER: Acreage, yield, and production, by counties, all irrigated, 1961 and 1965

County	1964 ¹				1965			
	Acres		Yield per harvested acre	Production	Acres		Yield per harvested acre	Production
	Planted	Harvested			Planted	Harvested		
	Acres	Acres	Cwt.	Cwt.	Acres	Acres	Cwt.	Cwt.
Bernalillo	0	0	---	---	10	10	95	950
Sandoval	30	30	50	1500	20	18	89	1600
San Juan	30	25	110	2750	25	23	100	2300
Valencia	80	80	80	6400	70	65	105	6800
NORTHWEST DISTRICT	140	135	79	10650	125	116	100	11650
Curry	10	0	---	---	10	10	120	1200
Quay	50	40	150	6000	45	40	150	6000
Roosevelt	20	20	100	2000	15	12	100	1200
NORTHEAST DISTRICT	80	60	133	8000	70	62	135	8400
Luna	25	20	120	2400	30	25	116	2900
Sierra	25	25	120	3000	25	23	113	2600
SOUTHWEST DISTRICT	50	45	120	5400	55	48	115	5500
Chaves	10	10	150	1500	10	10	150	1500
Dona Ana	50	45	134	6050	10	9	122	1100
Eddy	10	10	150	1500	10	10	150	1500
Lea	60	50	155	7750	40	35	154	5400
Otero	150	145	187	27150	230	210	157	32950
SOUTHEAST DISTRICT	280	260	169	43950	300	274	155	42450
STATE	550	500	135	68000	550	500	135	68000

¹ Revised

TOMATOES FOR PROCESSING: Acreage, yield, and production, by counties, all irrigated, 1964 and 1965

County	1964				1965			
	Acres		Yield per harvested acre	Production	Acres		Yield per harvested acre	Production
	Planted	Harvested			Planted	Harvested		
	Acres	Acres	Tons	Tons	Acres	Acres	Tons	Tons
Luna	1300	1200	10.0	12000	120	105	11.0	1150
SOUTHWEST DISTRICT	1300	1200	10.0	12000	120	105	11.0	1150
Dona Ana	0	0	---	---	120	95	11.0	1040
Otero	0	0	---	---	110	100	11.0	1100
SOUTHEAST DISTRICT	0	0	---	---	230	195	11.0	2140
STATE	1300	1200	10.0	12000	350	300	11.0	3300

New Mexico Agricultural Statistics

ONIONS-EARLY SUMMER: Acreage, yield, and production, by counties, all irrigated, 1964 and 1965

County	1964				1965			
	Acres		Yield per harvested acre	Production	Acres		Yield per harvested acre	Production
	Planted	Harvested			Planted	Harvested		
	Acres	Acres	Cwt.	Cwt.	Acres	Acres	Cwt.	Cwt.
Bernalillo	50	50	250	12500	50	45	250	11250
Santa Fe	30	20	250	5000	0	0	---	---
Valencia	30	30	250	7500	100	90	250	22500
NORTHWEST DISTRICT	110	100	250	25000	150	135	250	33750
Roosevelt	170	165	152	25000	150	140	156	21800
Torrance	30	25	160	4000	10	10	160	1600
NORTHEAST DISTRICT	200	190	153	29000	160	150	156	23400
Luna	120	100	330	33000	125	120	300	36000
Sierra	15	10	330	3300	20	20	330	6600
Socorro	15	10	330	3300	10	10	350	3500
SOUTHWEST DISTRICT	150	120	330	39600	155	150	307	46100
Dona Ana	1700	1665	330	549000	1600	1550	372	577300
Eddy	10	10	240	2400	10	10	240	2400
Lea	230	215	209	45000	225	205	210	43050
SOUTHEAST DISTRICT	1940	1890	316	596400	1835	1765	353	622750
STATE	2400	2300	300	690000	2300	2200	330	726000

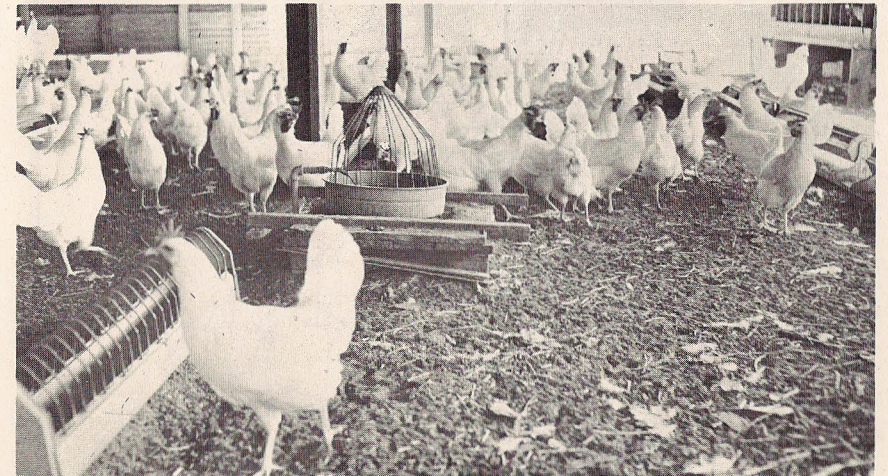
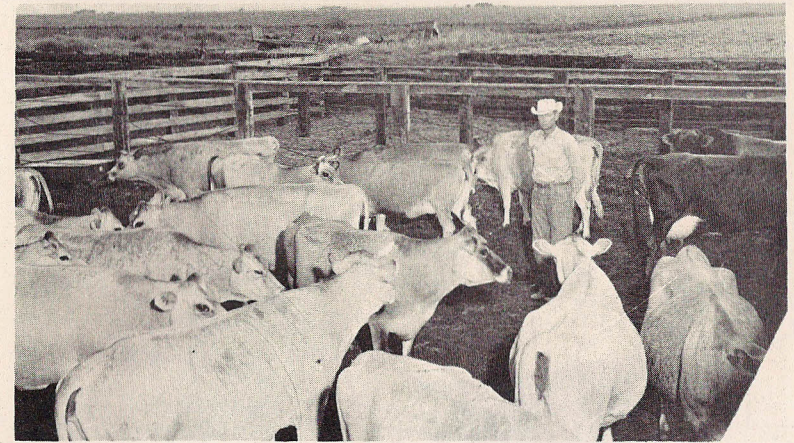
APPLES:¹ Acres, orchards, and trees 1963, and production 1964 and 1965

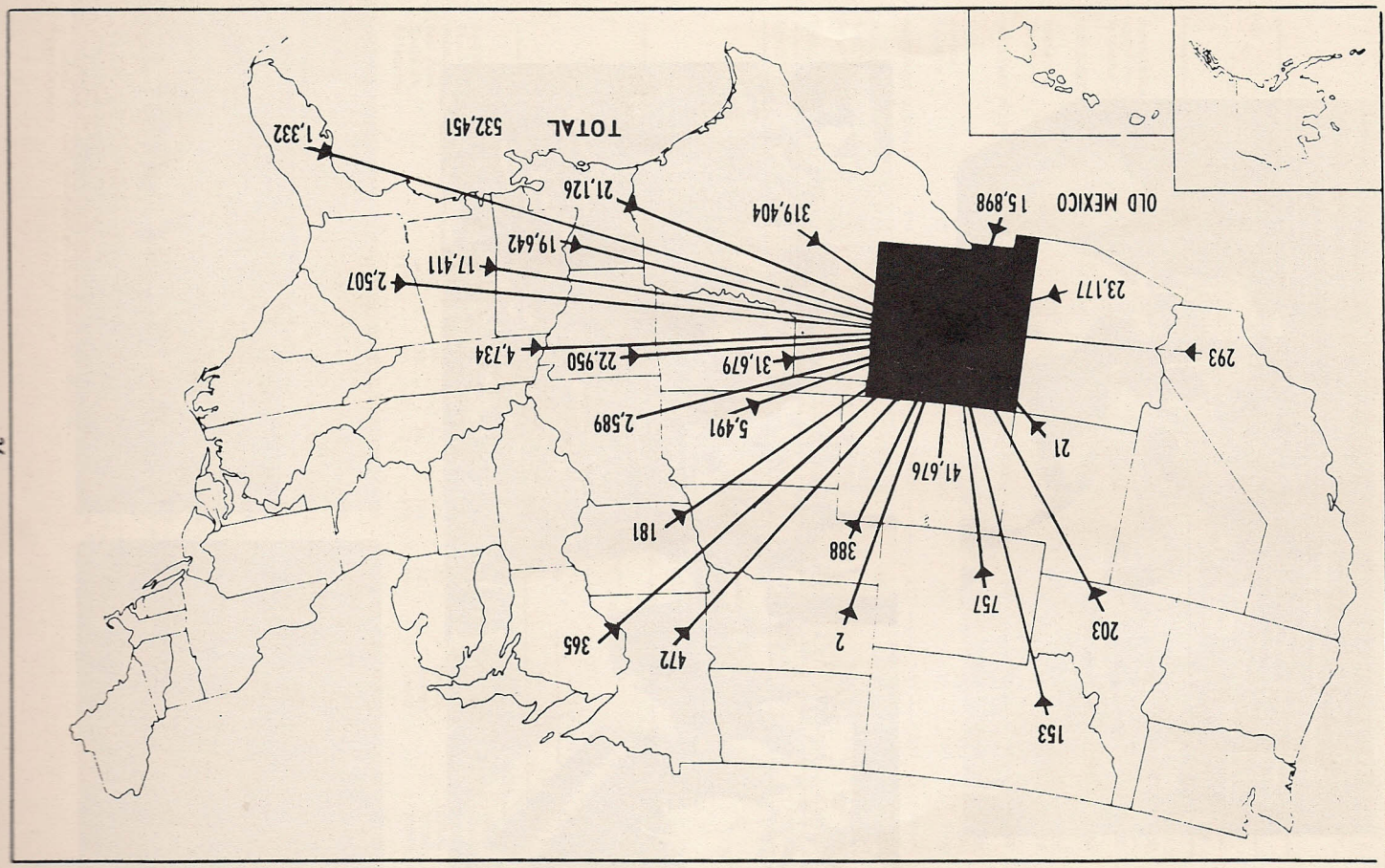
County	Acres, orchards and trees - 1962						Production	
	Number of acres	Orchards		Trees		1964	1965 ²	
		Number	Percent of total	Per orchard	Per acre			
	Acres	Number	Percent	- Trees -	- - Bushels - -	- -	- -	
Bernalillo	180	27	3	422	63	75000	10000	
Rio Arriba	2080	398	42	285	54	300000	110000	
Sandoval	450	74	8	250	41	135000	60000	
San Juan	1050	108	11	376	39	280000	150000	
Santa Fe	460	133	14	181	52	40000	25000	
Valencia	150	20	2	495	66	35000	20000	
NORTHWEST DISTRICT	4370	760	80	287	50	865000	375000	
De Baca	90	12	1	283	38	20000	15000	
NORTHEAST DISTRICT	90	12	1	283	38	20000	15000	
Grant	230	28	3	379	46	35000	40000	
SOUTHWEST DISTRICT	230	28	3	379	46	35000	40000	
Chaves and Otero	790	40	4	878	44	50000	100000	
Lincoln	1520	110	12	574	42	230000	120000	
SOUTHEAST DISTRICT	2310	150	16	655	43	280000	220000	
STATE	7000	950	100	347	47	1200000	650000	

¹ Estimates for commercial counties only. Acres, orchards and trees refer to those orchards in commercial counties with fifty or more trees being maintained for production. Production refers to total production in commercial counties.

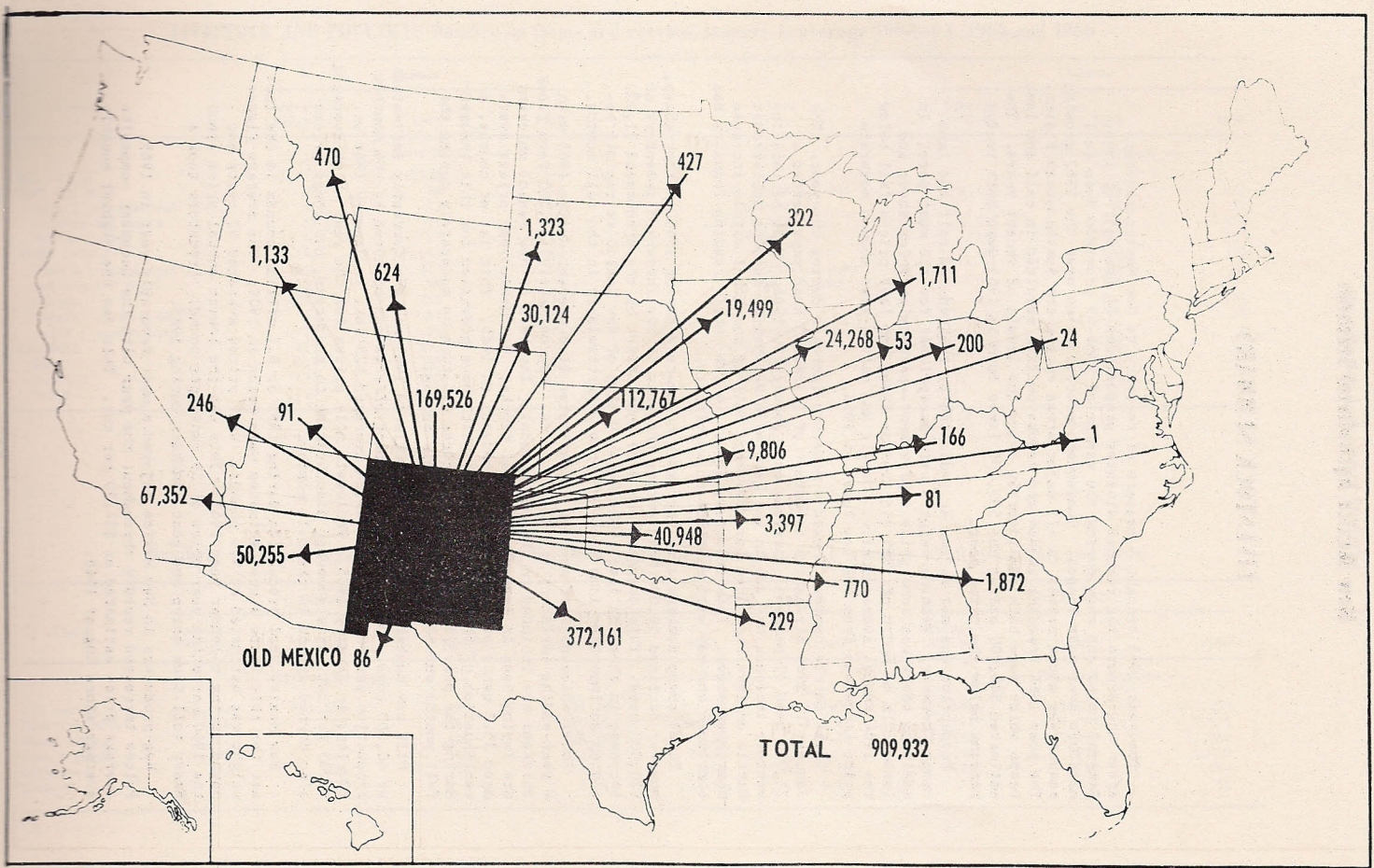
² Preliminary

New Mexico Agricultural Statistics





CATTLE SHIPPED OUT OF NEW MEXICO BY STATE OF DESTINATION, 1965



LIVESTOCK SUMMARY

The year 1965 brought a measure of recovery to New Mexico ranchers after the drouth had reached disaster proportions by the fall of 1964. General rains and snow during the winter of 1964-65 provided deep soil moisture over most ranges. Subsequent precipitation over the 1965 growing season was above normal in all major areas except the Southeastern Plains. The poor 1964 breeding season and severe culling resulted in calf and lamb crops which were both considerably below the levels of recent years. The estimated 545,000 calves and 531,000 lambs born in 1965 were both twelve percent below the prior year.

Production was not as low as indicated by the reduced calf and lamb crops, however. Weaning weights were exceptional for the most part. In addition there was some price improvement—particularly for sheep and lambs. In no month of 1965 did average sheep and lamb prices fall below the 1964 annual average price. Cattle and calves also showed moderate price increases from the low level of 1964.

Total cattle numbers showed a moderate increase during the year. The January 1, 1966 all-cattle inventory of 1,128,000 head represented a 22,000 head (2 percent) increase over January 1, 1965. Much of this inventory increase was due to the growth in New Mexico feedlot operations. Cattle on feed accounted for more than half of the total cattle increase mentioned above. This important growth in the cattle feeding industry has continued and may well continue to accelerate.

Total sheep numbers also increased moderately during 1965. Stock sheep, however declined 18,000 head during the year to the January 1 inventory of 920,000 head. This decrease was more than offset by the phenomenal 21,000 increase in sheep on feed. The Pecos Valley of New Mexico is rapidly becoming an important lamb feeding center—particularly in the fall months.

Total chickens increased by an estimated five percent during 1965 with a year-ending inventory of 922,000 birds. Approximately 175,000 farm flock chickens are included in the above total. The bulk of New Mexico chickens are laying hens in larger commercial flocks. New Mexico egg prices averaged 35.5 cents per dozen to the producer in 1965. This is, of course, a continuation of the very low prices which have prevailed for this industry during the past five years. Egg prices did turn up moderately during the fall months and have been stable this Spring.

Milk cow numbers changed very little in 1965 and are currently estimated at 40,000 cows. Dairy herd improvement effects can be noted by the monthly production per cow estimates which averaged 625 lbs. in January 1966 vs. 620 lbs. in January 1965. Wholesale milk prices for the year which averaged \$5.05 per cwt. were somewhat discouraging to producers, but these prices also turned upward in the fall months.

New Mexico wool production during 1965 at 8.7 million pounds is the lowest for this State since estimates were begun in 1909. The average fleece weight was estimated at 9.4 pounds. Wool prices averaged 40 cents per pound during calendar year 1965. This was the lowest annual price since the 1960 marketing year price of 38 cents per pound. Predators took a heavy toll from sheep and goat ranchers during 1965.

Hog producers in New Mexico enjoyed a most favorable year in 1965. Prices increased rapidly throughout the year with the December composite average price estimated at \$27.50 per cwt. This was the highest monthly average since August 1948.

LIVESTOCK AND POULTRY: Number on farms and ranches January 1, average 1960-64, 1965 and 1966

Class	Number		Class	Number	
	Average 1960-64	1965		Average 1960-64	1966 ¹
ALL CATTLE	1,212	1,106	ALL SHEEP & LAMBS	1,160	972
Heifers 1-2 years	68	66	On feed	48	31
Cows 2 years & over	44	43	STOCK SHEEP	1,112	938
Heifer calves	11	11	LAMBS	167	147
Other cattle	13	12	Ewes	22	23
ALL SHEEP	1,144	1,040	Wethers & Rams	923	791
Cows 2 years & over	659	617	1 YEAR & OLDER	872	744
Heifers 1-2 years	112	99	Ewes	45	41
Stock sheep	290	253	Rams	6	6
Calves	57	47	Wethers	52	45
Cows 1 year & over	26	24	ALL TURKEYS	7	3
Heifers 1 year & over	910	875	Breeder hens	5	2
Bulls 1 year & over	413	392			
Other cattle	475	465			
CHICKENS	22	18			
Hens					
Pullets					
Other					

--- Thousand head ---

Number, value per head, and total value of livestock and poultry on January 1, average 1960-64, 1965 and 1966

Class	Number		Value per head		Total value	
	Average 1960-64	1965	Average 1960-64	1965	Average 1960-64	1966 ¹
ALL CATTLE	1,212	1,128	131.00	101.00	159,196	143,256
Cows for milk	44	43	190.00	165.00	8,322	7,523
Stock sheep	938	920	14.10	14.50	15,685	17,940
Calves	45	43	21.30	20.80	1,100	1,419
Hogs & pigs	910	922	1.07	.99	972	866
Chickens	7	3	4.34	4.15	31	12
Turkeys						

--- Thousand head ---

--- Thousand dollars ---

¹ Preliminary

LIVESTOCK INVENTORY: Number on farms, by counties, January 1, 1965

County	All cattle	All cows 2 years and older	Milk cows	All heifers 1-2 yrs.	Hogs	Sheep	Chickens
	Head	Head	Head	Head	Head	Head	Head
Bernalillo	20000	8000	5200	2200	1200	9000	160000
McKinley	12000	9000	100	1700	900	110000	9000
Rio Arriba	26000	17000	500	2500	1100	63000	8000
Sandoval	19000	10000	200	1400	400	4000	3000
San Juan	19000	12000	1400	1900	1400	80000	8000
Santa Fe	16000	11000	400	2100	900	3000	8000
Taos	9000	6000	400	1000	1900	23000	9000
Valencia	50000	28000	4300	5200	2800	40000	25000
NORTHWEST DISTRICT	171000	101000	12500	18000	10600	332000	230000
Colfax	44000	30000	700	4600	2000	6500	4000
Curry	48000	16000	1300	4700	3300	4000	23000
De Baca	30000	22000	500	2800	1000	20000	10000
Guadalupe	29000	20000	200	3000	500	43000	4000
Harding	34000	24000	200	3500	100	1000	3000
Mora	24000	17000	300	1800	500	15000	6000
Quay	46000	31000	1600	4400	2000	2000	16000
Roosevelt	64000	39000	10200	7500	6900	4500	37000
San Miguel	41000	28000	700	4000	500	5000	25000
Torrance	31000	20000	1300	2700	1500	27000	5000
Union	70000	41000	900	5000	1300	2000	12000
NORTHEAST DISTRICT	461000	288000	17900	44000	19600	130000	145000
Catron	40000	25000	100	3500	200	14500	3000
Grant	42000	27000	500	2600	500	2000	7000
Hidalgo	39000	26000	200	3600	1800	500	4000
Luna	27000	15000	200	2800	2000	500	36000
Sierra	23000	14000	2100	2200	1100	8000	8000
Socorro	39000	24000	400	4300	200	9500	3000
SOUTHWEST DISTRICT	210000	131000	3500	19000	5800	35000	61000
Chaves	80000	31000	1000	9000	2200	160000	42000
Dona Ana	24000	12000	3000	3300	1300	1500	300000
Eddy	51000	27000	2500	4000	1400	67000	55000
Lea	52000	33000	1500	6000	3000	40000	30000
Lincoln	30000	19000	400	2800	200	175000	8000
Otero	27000	18000	700	3900	900	28500	4000
SOUTHEAST DISTRICT	264000	140000	9100	29000	9000	472000	439000
STATE	1106000	660000	43000	110000	45000	969000	875000

LIVESTOCK INVENTORY: Number on farms, by counties, January 1, 1966¹

County	All cattle	All cows 2 years and older	Milk cows	All heifers 1-2 yrs.	Hogs	Sheep	Chickens
	Head	Head	Head	Head	Head	Head	Head
Bernalillo	21000	8000	4700	2100	900	10500	142500
McKinley	12000	8000	100	1700	900	90000	10000
Rio Arriba	25000	16000	400	2600	1000	67000	9600
Sandoval	18000	10000	200	1400	400	5000	3500
San Juan	20000	12000	1400	1900	1200	110000	11300
Santa Fe	16000	10000	400	2100	900	3000	7500
Taos	9000	6000	300	1000	1500	25000	10500
Valencia	50000	29000	4400	5200	2800	40000	25000
NORTHWEST DISTRICT	171000	99000	11900	18000	9600	350500	219900
Colfax	46000	30000	600	5000	2000	4500	5700
Curry	49000	15000	1300	4600	3300	1500	41000
De Baca	30000	21000	500	3400	1000	20000	9000
Guadalupe	31000	21000	200	2900	500	50000	3500
Harding	36000	22000	200	3600	100	1000	3000
Mora	26000	17000	300	1700	300	14000	7500
Quay	44000	29000	1600	4300	2000	1500	15500
Roosevelt	64000	40000	10200	7600	6500	3000	34500
San Miguel	44000	29000	600	4000	500	4000	24300
Torrance	30000	20000	400	3000	1500	30000	5300
Union	75000	40000	800	5500	1300	1500	13200
NORTHEAST DISTRICT	475000	284000	16700	45600	19000	131000	162500
Catron	39000	25000	100	3400	100	20000	3600
Grant	43000	27000	500	2800	300	2000	6500
Hidalgo	39000	24000	200	3900	2000	500	3600
Luna	27000	15000	200	3100	1500	300	34500
Sierra	25000	15000	3200	2100	1500	1000	14000
Socorro	37000	25000	400	4200	200	5500	4500
SOUTHWEST DISTRICT	210000	131000	4600	19500	5600	29300	66700
Chaves	88000	29000	1200	9700	2000	166000	42000
Dona Ana	25000	12000	3200	3900	1500	2200	327000
Eddy	52000	28000	2500	4000	1200	70000	56500
Lea	48000	31000	1800	6000	3000	30000	31200
Lincoln	32000	17000	400	3000	200	165000	8500
Otero	27000	17000	700	3700	900	28000	7700
SOUTHEAST DISTRICT	272000	134000	9800	30900	8800	461200	472900
STATE	1128000	648000	43000	114000	43000	972000	922000

¹ Preliminary

LIVESTOCK: Inventory numbers, births, and disposition, 1963, 1964, and 1965

CATTLE AND CALVES											
Year	On hand January 1		Calves born			Marketings ²		Farm slaughter		Deaths	
	All cattle and calves	All cows 2 yrs. and older	Number	As percent of cows 2 yrs. and older ¹	Inshipments	Cattle	Calves	Cattle	Calves	Cattle	Calves
	Thou. head	Thou. head	Thou. head	Percent	Thou. head	Thou. head		Thou. head		Thou. head	
1963	1209	718	610	85	408	641	259	5	5	19	41
1964	1257	739	621	84	277	670	306	4	6	19	44
1965	1106	660	548	83	446	682	219	5	6	19	41

SHEEP AND LAMBS											
Year	On hand January 1	Lambs saved		Inshipments		Marketings ²		Farm slaughter		Deaths	
		Number	As percent of ewes 1 yr. and older	Sheep	Lambs	Sheep	Lambs	Sheep	Lambs	Sheep	Lambs
		Thou. head	Percent	Thou. head		Thou. head		Thou. head		Thou. head	
1963	1145	718	83	44	17	138	461	29	17	101	89
1964	1089	606	74	53	5	174	362	28	16	115	89
1965	969	560	75	38	19	127	273	25	14	95	80

HOGS AND PIGS										
Year	On hand January 1	December-May		June-November		Disposition				
		Sows farrowing	Pig crop	Sows farrowing	Pig crop	Inshipments	Marketings ²	Farm Slaughter	Deaths	
		- - Thousand head - -								
1963	52	5	33	5	35	5	62	12	6	
1964	45	5	31	5	35	3	54	11	4	
1965	45	4	28	5	34	3	52	9	6	

¹ Not strictly a calving rate. Figure represents calves born expressed as a percentage of January 1 inventory of cows and heifers 2 years old and over and not the number of all cows and heifers giving birth to calves during the year.

² Excludes inter-farm sales.

LIVESTOCK: Production and income, 1963, 1964, and 1965

CATTLE AND CALVES									
Year	Production ¹	Marketings ²	Price per 100 pounds		Value of production	Cash Receipts ³	Value of home consumption	Gross income	Cost of inshipments
			Cattle	Calves					
			Thou. pounds	Thou. pounds					
1963	429,500	633,650	20.60	24.90	93,137	134,892	1,243	136,135	52,236
1964	398,500	664,415	16.80	20.20	71,195	116,004	943	116,947	28,358
1965	390,535	636,525	20.20	22.90	81,258	130,938	1,251	132,189	50,443

SHEEP AND LAMBS									
Year	Production ¹	Marketings ²	Price per 100 pounds		Value of production	Cash Receipts ³	Value of home consumption	Gross income	Cost of inshipments
			Cattle	Calves					
			Thou. pounds	Thou. pounds					
1963	43,102	51,210	5.70	15.70	6,017	6,512	329	6,841	464
1964	32,489	46,238	6.00	17.40	4,745	5,924	340	6,264	350
1965	31,369	35,466	7.40	21.60	6,028	5,687	387	6,074	522

HOGS									
Year	Production ¹	Marketings ²	Price per 100 pounds		Value of production	Cash Receipts ³	Value of home consumption	Gross income	Cost of inshipments
			Cattle	Calves					
			Thou. pounds	Thou. pounds					
1963	15,353	14,121	15.10	15.10	2,318	2,153	424	2,577	66
1964	14,873	12,528	15.40	15.40	2,290	1,955	399	2,354	48
1965	13,398	12,064	20.80	20.80	2,787	2,536	422	2,958	48

¹ Adjustments made for inshipments and changes in inventory.

² Excludes inter-farm sales.

³ Includes receipts from marketings and from sales of farm slaughtered meat.

MILK: Production, disposition, price, and income, 1963, 1964, and 1965

Year	Milk cows on farms ¹	Milk production per cow ²	Disposition of milk produced								Value of sales (receipts from farm marketings)	Gross farm income from dairy products	
			Total milk production ²	Used on farms where produced	Sold wholesale			Milk and cream retailed by farmers					
					Whole milk	Price per 100 pounds	Milkfat sold	Price per pound	Milk equivalent	Price per quart			
													Thou. head
1963	40	6850	274	21	245	5.05	---	---	---	4	22.0	13252	14143
1964	40	7100	284	19	252	5.09	---	---	---	6	22.0	14147	14948
1965 ³	40	7300	292	16	253	5.04	---	---	---	10	22.0	14951	15658

¹ Average number on farms during year, excluding heifers not yet fresh.
² Excludes milk sucked by calves.
³ Preliminary.

CATTLE AND CALVES ON FEED : Marketings and placements, by quarters

Year and quarter		Total fed cattle marketed	Cattle and Calves placed on feed	Year and quarter		Total fed cattle marketed	Cattle and calves placed on feed
		Thousand head				Thousand head	
1963	October 1-December 31	23	53	1965	January 1-March 31	37	34
1964	January 1-March 31	34	33		April 1-June 30	57	40
	April 1-June 30	55	32		July 1-September 30	44	56
	July 1-September 30	44	50		October 1-December 31	35	56
	October 1-December 31	33	56	1966	January 1-March 31	52	62

CATTLE AND CALVES ON FEED: Number on feed, weight groups, classes and length of time on feed, by quarters, 1962-1966

Year and month	Total cattle and calves on feed	Number on feed by weight groups					Number on feed by classes			Number on feed by time		
		Under 500 pounds	500-699 pounds	700-899 pounds	900-1099 pounds	1100 pounds and over	Steers and steer calves	Heifers and heifer calves	Cows and others	Less than 3 months	3 to 6 months	6 months and over
-- Thousand head --												
Oct. 1												
1962	55	19	20	11	4	1	21	33	1	40	12	3
1963	64	17	22	15	8	2	28	35	1	36	22	6
1964	76	19	26	20	9	2	45	30	1	49	23	4
1965	91	24	32	22	13	-	53	37	1	54	28	9
Jan. 1												
1963	86	14	27	36	8	1	47	36	3	57	27	2
1964	94	18	28	29	16	3	49	43	2	52	32	10
1965	99	23	32	27	15	2	57	40	2	56	40	3
1966	112	19	40	39	13	1	64	46	2	55	46	11
Apr. 1												
1963	88	9	28	29	19	3	46	39	3	34	45	9
1964	93	11	35	24	18	5	50	41	2	32	49	12
1965	96	10	32	36	16	2	54	40	2	33	47	16
1966	122	13	55	35	18	1	71	49	2	60	50	12
July 1												
1962	54	7	17	19	9	2	27	25	2	21	27	6
1963	70	8	17	28	15	2	44	25	1	27	27	16
1964	70	7	22	32	6	3	38	31	1	32	22	16
1965	79	11	23	31	14	-	44	33	2	40	28	11

LIVESTOCK SLAUGHTER: Number slaughtered, average and total liveweight, by species, 1963, 1964, and 1965¹

Year	Cattle			Calves			Hogs			Sheep and Lambs		
	Number	Average live-weight per head	Total live-weight	Number	Average live-weight per head	Total live-weight	Number	Average live-weight per head	Total live-weight	Number	Average live-weight per head	Total live-weight
	Thou. head	Pounds	Thou. Pounds	Thou. head	Pounds	Thou. Pounds	Thou. head	Pounds	Thou. Pounds	Thou. head	Pounds	Thou. Pounds
1963	160.7	938	154013	1.2	444	533	104.0	227	23595	37.4	101	3787
1964	186.0	955	177643	.8	456	365	102.9	231	23811	36.6	101	3701
1965	237.5	949	225469	1.1	444	488	96.7	231	22362	37.4	105	3931

¹ Includes slaughter under Federal inspection and other commercial slaughter; excludes farm slaughter.

FARM CHICKENS: Number raised, produced, disposition, and income, 1963, 1964, and 1965

Year	Raised ²	Lost ³	Produced ⁴		Consumed in farm household	Sold	Pounds produced ⁴		Pounds consumed in farm household	Pounds sold	Price per pound	Value of production	Cash receipts	Value of chickens consumed	Gross income
			Thousand head	Thousand pounds			Cents	Thousand dollars							
1963	672	170	502	313	189	313	1970	624	1346	9.9	195	133	62	195	
1964	672	161	511	428	153	428	1994	490	1798	9.3	185	167	46	213	
1965 ¹	685	140	545	377	121	377	2114	375	1546	9.2	194	142	34	176	

¹ Does not include commercial broilers.

² Does not include young chickens lost.

³ Loss during the year of chickens on hand January 1.

⁴ Production is the number (or pounds) available for utilization during the year.

⁵ Preliminary.

CHICKENS AND EGGS: Chickens raised, average number of layers on hand, egg production, price, and income, 1963, 1964, and 1965

Year	Chickens raised	Average yearly number layers on hand	Eggs produced	Eggs consumed in farm household	Eggs sold	Price per dozen	Cash receipts	Value of eggs consumed in farm household	Gross income
1963	672	754	160	9	151	34.5	4341	259	4600
1964	672	735	149	8	141	33.8	3972	225	4197
1965 ¹	685	707	151	7	144	35.5	4260	207	4467

¹ Preliminary

SHEEP: (Excludes sheep owned by Indians): Number on farms, sheep shorn, and wool production, 1963, 1964, and 1965

Year	Total sheep	Sheep on feed	Stock sheep			Sheep shorn	Average weight of fleece	Wool production
			Total	All ewes ¹	All other sheep			
	Thou. head	Thou. head	Thou. head	Thou. head	Thou. head	Thou. head	Pounds	Thou. Pounds
1963	901	55	846	796	50	846	10.0	8432
1964	838	34	804	752	52	796	9.8	7836
1965 ²	730	31	699	647	52	691	9.9	6823

WOOL: Number sheep shorn, fleece weight, production, price, and value, 1963, 1964, and 1965

Year	Sheep shorn ³	Average weight of fleece	Production	Price per pound ⁴	Total value
1963	1073	9.5	10157	44	4469
1964	1029	9.3	9537	49	4673
1965 ²	922	9.4	8669	40	3468

MOHAIR: Number of goats clipped, fleece weight, production, price, and value, 1963, 1964, and 1965

Year	Goats clipped	Average weight of fleece	Production	Price per pound ⁴	Total value
1963	61	4.6	282	67	189
1964	65	4.8	310	74	229
1965 ²	56	4.5	253	50	126

BEEES AND HONEY: Colonies, yield, production, price, and value, 1963, 1964, and 1965

Year	Colonies of bees	Pounds per colony	Production	Price per pound	Value of production	Honey stocks on hand Dec. 15	Beeswax		
							Production	Price per pound	Value of production
	Thou. hives	Pounds	Thou. pounds	Cents	Thou. dollars	Thou. pounds	Thou. pounds	Cents	Thou. dollars
1963	11	70	770	15.3	118	146	12	43	5
1964	12	75	900	15.6	140	198	12	44	5
1965	13	71	923	14.5	134	332	10	44	4

¹ Ewes one year and over and ewe lambs.

² Preliminary.

³ Includes shearing at commercial feeding yards.

⁴ Price per pound on a marketing year basis, April-December 1963, January-December 1964 and 1965.

CATTLE ON FEED: Number on feed, by counties, and quarters, January 1, 1964–April 1, 1966

County	Jan. 1, 1964	Apr. 1, 1964	July 1, 1964	Oct. 1, 1964	Jan. 1, 1965	Apr. 1, 1965	July 1, 1965	Oct. 1, 1965	Jan. 1, 1966	Apr. 1, 1966
	- head -									
Bernalillo	9300	8500	5100	5400	9400	8550	7600	7000	9000	8500
Other counties ¹	2400	2100	900	900	2800	1750	500	500	4700	3800
NORTHWEST DISTRICT	11700	10600	6000	6300	12200	10300	8100	7500	13700	12300
Curry	26000	25200	14900	20200	26400	29300	23000	23000	27800	35000
Roosevelt	2200	1900	1700	3400	3600	1750	200	2600	4000	2700
Other counties ²	1700	2800	1400	100	1300	950	600	400	1600	6900
NORTHEAST DISTRICT	29900	29900	18000	23700	31300	32000	23800	26000	33400	44600
SOUTHWEST DISTRICT ³	2200	3000	1600	1400	3600	2400	1500	1550	3200	4000
Chaves	40000	40500	36850	36900	41650	40500	36600	47400	51000	53000
Dona Ana	5000	5000	3550	3550	5450	6650	4900	3850	5550	3300
Eddy	2200	1050	1050	1000	1600	1700	1500	1600	2000	2000
Lea	2950	2900	2900	3150	3200	2450	2600	3100	3100	2800
Other counties ⁴	50	50	50	0	0	0	0	0	50	---
SOUTHEAST DISTRICT	50200	49500	44400	44600	51900	51300	45600	55950	61700	61100
STATE	94000	93000	70000	76000	99000	96000	79000	91000	112000	122000

¹ Includes Sandoval and Santa Fe. ² Includes De Baca, Quay and Torrance. ³ Includes Grant, Hidalgo, Luna and Socorro. ⁴ Includes Lincoln and Otero.

SHEEP ON FEED: Number on feed, by counties, January 1, 1963, 1964, 1965, 1966

County	1963	1964	1965	1966 ¹
	- head -			
Bernalillo	1900	4600	400	1000
Other counties	100	600	400	300
NORTHWEST DISTRICT	2000	5200	800	1300
Curry	4000	2000	0	500
Other counties	1800	500	1200	0
NORTHEAST DISTRICT	5800	2500	1200	500
SOUTHWEST DISTRICT	100	200	200	0
Chaves	27500	13300	14300	41300
Eddy	8300	4900	5800	3500
Lea	900	500	500	400
Lincoln	8000	7200	6700	5000
Other counties	2400	200	1500	0
SOUTHEAST DISTRICT	47100	26100	28800	50200
STATE	55000	34000	31000	52000

¹ Preliminary.

CROP VALUES: Farm values of production of principal crops, by counties, 1964

County	Wheat ¹	Sorghum for grain	Corn for grain	Oats	Barley ¹	Cotton and Cottonseed ¹	All Hay	Alfalfa-seed ¹	Broom-corn	Potatoes
	— Thousand Dollars —									
Bernalillo	7.5	---	16.5	---	9.1	---	515.0	---	---	---
McKinley	12.6	---	64.0	6.6	1.0	---	67.0	---	---	---
Hijo Arriba	45.4	---	5.5	4.6	11.3	---	408.0	---	---	---
Sandoval	3.4	---	41.0	1.7	1.0	---	148.0	---	---	---
San Juan	9.2	---	172.0	9.5	25.6	---	905.0	---	---	---
Santa Fe	30.0	4.7	81.0	6.4	12.5	---	233.0	---	---	68.0
Taos	9.9	2.3	12.0	7.6	17.7	---	307.0	---	---	30.0
Valencia	41.0	20.0	11.0	7.6	16.8	1.9	1,032.0	---	---	81.0
NORTHWEST DISTRICT ²	159.0	27.0	403.0	44.0	95.0	1.9	3,615.0	---	---	211.0
Colfax	35.2	3.9	8.0	16.4	2.5	---	720.0	---	---	---
Curry	3,034.5	5,533.0	9.5	9.1	35.5	227.9	168.0	---	4.9	---
De Baca	9.2	57.0	5.0	---	3.0	40.5	531.0	---	---	---
Guadalupe	---	1.1	5.5	---	---	---	86.0	---	---	---
Harding	9.9	21.0	---	---	---	---	21.0	---	---	---
Mora	4.1	---	3.0	5.0	2.5	---	466.0	---	---	---
Quay	394.8	666.5	3.0	12.2	2.0	604.0	501.0	3.5	238.0	---
Roosevelt	212.3	1,455.0	28.0	---	19.0	2,496.9	432.0	---	534.0	---
San Miguel	8.5	6.5	19.0	1.2	---	---	156.0	---	---	---
Torrance	26.0	5.0	183.0	---	8.5	---	594.0	---	---	343.0
Union	18.5	284.0	---	1.6	5.0	---	378.0	---	5.6	---
NORTHEAST DISTRICT ²	3,753.0	8,033.0	264.0	45.0	78.0	3,369.3	4,053.0	3.5	782.5	407.0
Catron	2.0	---	3.0	---	3.2	---	57.0	---	---	---
Grant	3.8	21.0	19.0	9.9	12.0	24.8	283.0	---	---	---
Hidalgo	---	616.5	12.0	2.6	106.3	1,785.1	176.0	---	---	---
Luna	1.5	1,130.0	26.0	8.5	95.0	4,515.7	209.0	---	---	---
Sierra	---	3.9	10.0	---	60.0	711.3	242.0	---	---	---
Socorro	1.7	48.6	25.0	---	24.5	406.3	437.0	---	---	---
SOUTHWEST DISTRICT ²	9.0	1,820.0	95.0	21.0	301.0	7,443.2	1,404.0	3.5	---	---
Chaves	7.4	292.0	50.0	46.5	470.0	8,882.2	6,129.0	161.0	---	---
Dona Ana	1.5	42.0	19.0	7.2	296.0	17,402.9	1,580.0	45.5	---	---
Eddy	1.0	81.0	5.5	74.8	155.5	6,947.9	3,584.0	169.0	---	---
Lea	1.4	1,435.0	13.5	16.2	64.0	5,077.8	924.0	3.5	---	---
Lincoln	---	---	4.0	---	---	---	188.0	---	---	---
Otero	3.7	---	11.0	15.3	6.5	380.8	183.0	---	---	---
SOUTHEAST DISTRICT ²	15.0	1,850.0	103.0	160.0	992.0	38,691.6	12,588.0	379.0	5.5	---
STATE	3,936.0	11,730.0	865.0	270.0	1,466.0	49,506.0	21,660.0	386.0	788.0	618.0

¹ Revised.

² For some crops, county values will not add to district totals. District totals include counties for which separate estimates were not made.

CROP VALUES: Farm values of production of principal crops, by counties, 1964

County	Sweet-potatoes	Peanuts	Dry Beans ¹	Early spring and early fall lettuce	Fresh market and processing tomatoes	Carrots	Cantaloups	Onions	Apples	Total
Bernalillo	---	---	4.9	15.6	---	---	1.5	34.0	96.0	700.1
McKinley	---	---	66.0	---	---	---	---	---	---	217.2
Rio Arriba	---	---	4.4	---	---	---	---	---	348.0	827.2
Sandoval	---	---	1.5	---	4.1	---	1.8	---	177.0	379.5
San Juan	---	---	13.5	---	7.6	---	---	---	361.0	1,513.4
Santa Fe	---	---	6.3	31.2	---	---	3.0	13.0	56.0	545.1
Taos	---	---	7.8	---	---	---	---	---	---	394.3
Valencia	---	---	6.6	76.3	17.6	85.3	7.5	19.0	48.0	1,471.6
NORTHWEST DISTRICT ²	---	---	111.0	123.1	29.3	85.3	13.8	66.0	1,086.0	6,070.4
Colfax	---	---	4.3	---	---	---	---	---	---	790.3
Curry	---	---	---	---	---	---	---	---	---	9,022.4
De Baca	---	---	---	---	---	---	---	---	---	645.7
Guadalupe	---	---	6.0	---	---	---	---	---	---	98.6
Harding	---	---	---	---	---	---	---	---	---	51.9
Mora	---	---	2.5	---	---	---	---	---	---	483.1
Quay	---	12.8	1.5	---	16.5	---	7.9	---	---	2,463.6
Roosevelt	307.0	2,021.2	.4	---	5.5	---	5.2	68.0	32.0	7,616.5
San Miguel	---	---	2.1	---	---	---	---	---	---	193.3
Torrance	---	---	109.0	59.2	---	---	---	11.0	---	1,338.7
Union	---	---	.2	---	---	---	---	---	---	692.9
NORTHEAST DISTRICT ²	307.0	2,034.0	126.0	59.2	22.0	---	13.1	79.0	32.0	23,460.6
Catron	---	---	---	---	---	---	---	---	---	65.2
Grant	---	---	---	---	---	---	---	104.0	---	477.5
Hidalgo	---	---	16.8	---	392.6	---	1.2	---	---	3,109.1
Luna	---	---	82.0	---	8.2	---	1.8	79.0	---	6,156.7
Sierra	---	---	---	---	---	---	---	8.0	---	1,035.2
Socorro	---	---	4.2	---	---	---	---	8.0	---	955.3
SOUTHWEST DISTRICT ²	---	---	103.0	---	400.8	---	3.0	95.0	104.0	11,802.5
Chaves	---	---	---	---	4.1	---	5.0	---	---	16,047.2
Dona Ana	---	---	---	1,284.7	16.6	---	2.6	1,560.0	---	22,258.0
Eddy	---	---	---	---	4.1	---	---	6.0	---	11,028.8
Lea	---	23.0	---	---	21.3	22.3	7.5	126.0	---	7,741.0
Lincoln	---	---	---	---	---	---	---	---	572.5	764.5
Otero	---	---	---	---	74.8	2.4	---	---	---	677.5
SOUTHEAST DISTRICT ²	30.0	23.0	17.0	1,284.7	120.9	24.7	15.1	1,692.0	697.0	58,688.5
STATE	337.0	2,057.0	357.0	1,467.0	573.0	110.0	45.0	1,932.0	1,919.0	100,022.0

¹ Revised.

² For some crops, county values will not add to district totals. District totals include counties for which separate estimates were not made.

CROP VALUES: Farm values of production crops, by counties, 1965

County	Wheat	Sorghum for grain	Corn for grain	Oats	Barley	Cotton and Cottonseed	All Hay	Alfalfa-seed	Broom-corn	Potatoes
Bernalillo	11.4	---	38.3	---	9.6	---	495.8	---	---	---
McKinley	12.4	---	110.7	23.7	1.0	---	75.2	---	---	---
Rio Arriba	107.6	---	5.7	10.0	14.4	---	419.5	---	---	---
Sandoval	6.7	---	46.5	2.5	1.9	---	169.2	---	---	---
San Juan	3.3	3.0	125.2	14.6	34.3	---	874.2	---	---	---
Santa Fe	46.7	---	84.2	4.5	14.9	---	237.4	---	---	182.7
Taos	11.9	3.5	17.9	14.3	20.7	---	289.0	---	---	17.3
Valencia	57.4	23.0	12.8	5.6	58.2	---	1,105.7	---	---	84.0
NORTHWEST DISTRICT ¹	257.4	29.5	441.3	75.2	155.0	---	3,666.0	---	---	284.0
Colfax	73.3	6.1	51.1	5.1	4.1	---	778.0	---	---	---
Curry	4,812.5	7,066.0	16.4	8.9	108.1	---	478.2	---	33.5	---
De Baca	4.4	47.2	5.3	1.6	6.1	283.0	478.2	---	---	---
Guadalupe	---	1.3	14.2	1.7	---	90.0	397.2	---	---	---
Harding	54.8	40.4	---	1.1	---	---	68.2	---	1.2	---
Mora	9.0	3.5	4.1	7.7	2.8	---	220.9	---	28.3	---
Quay	742.8	673.8	4.8	1.8	1.8	---	399.5	---	---	---
Roosevelt	421.8	1,783.5	56.7	1.5	18.0	357.0	426.5	3.0	558.7	---
San Miguel	8.3	6.1	32.6	1.2	---	3,244.0	359.5	---	1,081.8	---
Torrance	31.0	10.1	148.4	---	9.7	---	188.0	---	---	---
Union	53.1	591.2	---	1.6	4.4	---	475.8	---	---	543.0
NORTHEAST DISTRICT ¹	6,211.0	10,229.2	331.6	32.2	155.0	3,974.0	4,149.0	3.0	1,798.0	585.0
Catron	2.0	---	1.7	---	7.8	---	21.2	---	---	---
Grant	5.0	32.3	26.4	4.5	14.1	---	226.8	---	---	---
Hidalgo	2.0	809.0	51.1	---	106.7	18.0	176.4	---	---	---
Luna	1.2	1,347.7	63.9	6.1	102.8	1,260.0	222.1	---	---	---
Sierra	---	12.9	7.1	---	62.4	3,755.0	188.1	---	---	---
Socorro	10.0	45.4	34.1	---	37.2	668.0	633.4	---	---	---
SOUTHWEST DISTRICT ¹	20.2	2,247.3	184.3	10.6	331.0	5,986.0	1,468.0	3.0	---	---
Chaves	4.7	351.3	56.8	33.8	458.6	8,549.0*	4,495.5	124.0	---	---
Dona Ana	---	64.4	33.2	5.5	356.7	12,233.0	1,071.6	50.4	---	---
Eddy	.5	71.9	6.0	16.0	126.4	6,147.0	3,331.1	121.6	---	---
Lea	1.3	1,746.5	10.6	15.0	76.2	3,937.0	776.7	---	62.0	---
Lincoln	---	---	3.2	---	---	---	112.8	---	---	---
Otero	4.9	30.9	26.0	13.7	15.1	345.0	129.3	---	---	---
SOUTHEAST DISTRICT ¹	11.4	2,265.0	135.8	84.0	1,033.0	31,211.0	9,917.0	296.0	62.0	---
STATE	6,500.0	14,771.0	1,093.0	202.0	1,674.0	41,171.0	19,200.0	302.0	1,860.0	869.0

For some crops, county values will not add to district totals. District totals include counties for which separate estimates were not made.

CROP VALUES: Farm values of production of principal crops, by counties, 1965

County	Sweet potatoes	Peanuts	Dry Beans	Fresh market		Carrots	Cantaloups	Onions	Apples	Total
				Early spring and early fall lettuce	and processing tomatoes					
Thousand Dollars										
Bernalillo	---	---	10.0	27.0	2.0	---	1.4	61.9	16.5	673.9
McKinley	---	---	58.0	---	---	---	---	---	---	281.0
Rio Arriba	---	---	2.4	---	---	---	---	---	145.0	704.6
Sandoval	---	---	4.5	3.3	---	---	1.4	---	90.7	322.7
San Juan	---	---	16.0	4.7	---	---	2.2	---	206.3	1,283.8
Santa Fe	---	---	1.6	---	---	---	---	---	41.3	613.3
Taos	---	---	4.4	---	---	---	---	---	---	379.0
Valencia	---	---	5.1	565.0	14.0	57.0	6.7	123.7	33.0	2,151.2
NORTHEAST DISTRICT ¹	---	---	98.0	592.0	24.0	57.0	11.7	185.6	532.8	6,409.5
Colfax	---	---	8.2	---	---	---	---	---	---	925.9
Curry	---	---	10.8	---	2.5	---	---	---	---	12,819.9
De Baca	---	---	---	---	---	2.1	---	---	16.5	570.4
Guadalupe	---	---	6.6	---	---	---	---	---	---	93.2
Harding	---	---	---	---	---	---	---	---	---	345.5
Mora	---	---	---	---	---	---	---	---	---	426.6
Quay	---	---	7	12.5	---	---	6.7	---	---	2,806.4
Roosevelt	308.0	2,048.7	5.0	2.5	---	---	3.5	119.9	---	9,448.2
San Miguel	---	---	---	---	---	---	---	8.8	---	241.2
Torrance	---	---	107.9	198.0	---	---	---	---	---	1,532.7
Union	---	---	---	---	---	---	---	---	---	1,102.0
NORTHEAST DISTRICT ¹	308.0	2,065.0	140.0	198.0	17.5	---	12.3	128.7	16.5	30,354.0
Catron	---	---	---	---	---	---	---	---	---	32.7
Grant	---	---	---	---	---	---	---	---	---	376.6
Hidalgo	---	---	15.6	---	---	1.7	---	---	49.5	2,422.3
Luna	---	---	100.0	54.1	---	1.7	---	188.0	---	5,851.9
Sierra	---	---	---	5.4	---	---	---	36.3	---	980.2
Socorro	---	---	4.6	---	---	---	---	19.3	---	1,069.0
SOUTHWEST DISTRICT ¹	---	---	120.0	59.5	---	3.4	---	253.6	49.5	10,736.4
Chaves	---	---	---	3.1	---	5.0	---	---	132.0	14,213.8
Dona Ana	---	---	4,393.0	46.0	---	3.8	---	3,175.1	---	21,452.7
Eddy	---	---	---	3.1	---	6.8	---	13.2	---	9,843.6
Lea	---	28.0	---	11.3	---	---	---	236.8	---	6,901.4
Lincoln	---	---	---	---	---	---	---	---	---	264.2
Otero	---	---	---	114.5	---	---	---	---	148.2	679.4
SOUTHWEST DISTRICT ¹	---	---	5.0	178.0	---	15.6	---	3,425.1	280.2	53,362.1
STATE	330.0	2,093.0	363.0	5,183.0	279.0	57.0	43.0	3,993.0	879.0	100,862.0

¹ For some crops, county values will not add to district totals. District totals include counties for which separate estimates were not made.

LIVESTOCK INVENTORY VALUES: Farm inventory value of specified species of livestock, by counties, January 1, 1965

County	All Cattle ¹	Milk Cows ²	Hogs ³	All Sheep	Chickens	Total
-- Thousand dollars --						
Bernalillo	1,200.0	894.0	25.0	130.0	156.6	1,511.6
McKinley	1,200.0	17.0	19.0	1,595.0	8.8	2,822.8
Rio Arriba	2,600.0	86.0	23.0	914.0	7.8	3,544.8
Sandoval	2,300.0	34.0	8.0	58.0	2.9	2,368.9
San Juan	1,900.0	241.0	29.0	1,160.0	7.8	3,096.8
Santa Fe	1,900.0	69.0	19.0	44.0	7.8	1,970.8
Taos	1,000.0	69.0	39.0	333.0	8.8	1,380.8
Valencia	5,300.0	740.0	58.0	580.0	24.5	5,962.5
NORTHWEST DISTRICT	17,400.0	2,150.0	220.0	4,814.0	225.0	22,659.0
Colfax	4,992.0	118.0	42.0	94.0	3.9	5,131.9
Curry	4,680.0	218.0	69.0	58.0	22.0	4,829.0
De Baca	3,120.0	84.0	21.0	290.0	9.7	3,440.7
Guadalupe	3,120.0	34.0	10.0	624.0	3.9	3,757.9
Harding	3,640.0	34.0	2.0	14.0	2.9	3,658.9
Mora	2,600.0	50.0	10.0	218.0	5.8	2,833.8
Quay	4,992.0	269.0	42.0	29.0	15.5	5,078.5
Roosevelt	6,970.0	1,713.0	144.0	65.0	36.7	7,215.7
San Miguel	4,472.0	118.0	10.0	72.0	24.2	4,578.2
Torrance	3,328.0	218.0	31.0	391.0	4.8	3,754.8
Union	6,345.0	151.0	27.0	29.0	11.6	6,412.6
NORTHEAST DISTRICT	48,259.0	3,007.0	408.0	1,884.0	141.0	50,692.0
Catron	4,200.0	15.0	4.0	210.0	2.8	4,416.8
Grant	4,400.0	76.0	10.0	29.0	6.6	4,445.6
Hidalgo	4,000.0	30.0	38.0	7.0	3.8	4,048.8
Luna	2,600.0	30.0	42.0	7.0	33.5	2,682.5
Sierra	2,400.0	317.0	23.0	116.0	7.5	2,546.5
Socorro	4,100.0	60.0	4.0	138.0	2.8	4,244.8
SOUTHWEST DISTRICT	21,700.0	528.0	121.0	507.0	57.0	22,385.0
Chaves	5,432.0	155.0	46.0	2,313.0	42.4	7,833.4
Dona Ana	2,328.0	465.0	27.0	22.0	302.6	2,679.6
Eddy	5,529.0	388.0	29.0	969.0	55.6	6,582.6
Lea	5,335.0	232.0	62.0	580.0	30.3	6,007.3
Lincoln	3,007.0	62.0	4.0	2,547.0	8.1	5,566.1
Otero	2,716.0	108.0	19.0	399.0	4.0	3,138.0
SOUTHEAST DISTRICT	24,347.0	1,410.0	187.0	6,830.0	443.0	31,807.0
STATE	111,706.0	7,095.0	936.0	14,035.0	866.0	127,543.0

¹ Includes milk cows.

² Cows and heifers two years old and over kept for milk.

³ Revised.

New Mexico Agricultural Statistics

LIVESTOCK INVENTORY VALUES: Farm inventory value of specified species of livestock.
by counties, January 1, 1966

County	All Cattle ¹	Milk Cows ²	Hogs	All Sheep	Chickens	Total
-- Thousand dollars --						
Bernalillo	2,667.0	822.5	29.7	205.0	156.7	3,058.4
McKinley	1,524.0	17.5	29.7	1,757.3	11.0	3,322.0
Rio Arriba	3,175.0	70.0	33.0	1,308.3	10.6	4,526.9
Sandoval	2,286.0	35.0	13.2	97.7	3.8	2,400.7
San Juan	2,540.0	245.0	39.6	2,147.9	12.4	4,739.9
Santa Fe	2,032.0	70.0	29.7	58.6	8.2	2,128.5
Taos	1,143.0	52.5	49.5	488.2	11.6	1,692.3
Valencia	6,350.0	770.0	92.4	781.1	27.5	7,251.0
NORTHWEST DISTRICT	21,717.0	2,082.5	316.8	6,844.1	241.8	29,119.7
Colfax	5,842.0	105.0	66.0	87.9	6.3	6,002.2
Curry	6,223.0	227.5	108.9	29.3	45.1	6,406.3
De Baca	3,810.0	87.5	33.0	390.5	9.9	4,243.4
Guadalupe	3,937.0	35.0	16.5	976.3	3.9	4,933.7
Harding	4,572.0	35.0	3.3	19.5	3.3	4,598.1
Mora	3,302.0	52.5	9.9	273.4	8.2	3,593.5
Quay	5,588.0	280.0	66.0	29.3	17.0	5,700.3
Roosevelt	8,128.0	1,785.0	214.5	58.6	38.0	8,439.1
San Miguel	5,588.0	105.0	16.5	78.1	26.7	5,709.3
Torrance	3,810.0	70.0	49.5	585.8	5.8	4,451.1
Union	9,525.0	140.0	42.9	29.3	14.5	9,611.7
NORTHEAST DISTRICT	60,325.0	2,922.5	627.0	2,558.0	178.7	63,688.7
Catron	4,953.0	17.5	3.3	390.5	4.0	5,350.8
Grant	5,461.0	87.5	9.9	39.0	7.1	5,517.0
Hidalgo	4,953.0	35.0	66.0	9.8	4.0	5,032.8
Luna	3,429.0	35.0	49.5	5.9	37.9	3,522.2
Sierra	3,175.0	560.0	49.5	19.5	15.4	3,259.5
Socorro	4,699.0	70.0	6.6	107.4	4.9	4,817.9
SOUTHWEST DISTRICT	26,670.0	805.0	184.8	572.1	73.3	27,500.2
Chaves	11,176.0	210.0	66.0	3,241.3	46.2	14,529.5
Dona Ana	3,175.0	560.0	49.5	43.0	359.7	3,627.2
Eddy	6,604.0	437.5	39.6	1,366.9	62.2	8,072.7
Lea	6,096.0	315.0	99.0	585.9	34.3	6,815.2
Lincoln	4,064.0	70.0	6.6	3,221.9	9.3	7,301.8
Otero	3,429.0	122.5	29.7	546.8	8.5	4,014.0
SOUTHEAST DISTRICT	34,544.0	1,715.0	290.4	9,005.8	520.2	44,360.4
STATE	143,256.0	7,525.0	1,419.0	18,980.0	1,014.0	164,569.0

¹Includes milk cows.

²Cows and heifers two years old and over kept for milk.

New Mexico Agricultural Statistics

PRICES RECEIVED BY FARMERS AND RANCHERS: Principal crops.
by months, and years, 1961-1965

Year	Jan.	Feb.	Mar.	Apr.	May	June	July	Aug.	Sept.	Oct.	Nov.	Dec.
WHEAT, ALL (dollars per bushel)												
1961	1.75	1.77	1.76	1.73	1.72	1.71	1.73	1.78	1.81	1.83	1.85	1.85
1962	1.83	1.84	1.87	1.87	1.88	1.91	1.94	1.97	1.98	1.98	2.00	2.01
1963	2.02	2.03	2.05	2.11	2.05	1.85	1.88	1.87	1.87	1.92	1.95	1.97
1964	1.98	2.00	1.87	2.00	1.92	1.44	1.39	1.42	1.44	1.46	1.48	1.54
1965 ¹	1.48	1.44	1.40	1.36	1.33	1.26	1.30	1.35	1.35	1.35	1.38	1.40
CORN (dollars per bushel)												
1961	1.43	1.43	1.44	1.35	1.43	1.45	1.47	1.46	1.43	1.43	1.42	1.41
1962	1.40	1.40	1.40	1.40	1.41	1.42	1.42	1.41	1.41	1.42	1.40	1.44
1963	1.46	1.47	1.45	1.43	1.44	1.45	1.50	1.45	1.45	1.35	1.34	1.36
1964	1.37	1.34	1.39	1.39	1.39	1.38	1.36	1.36	1.36	1.36	1.33	1.40
1965 ¹	1.40	1.40	1.40	1.41	1.41	1.39	1.39	1.42	1.40	1.40	1.39	1.40
OATS (dollars per bushel)												
1961	.80	.80	.78	.75	.75	.75	.80	.80	.81	.83	.84	.86
1962	.86	.85	.85	.85	.85	.83	.85	.83	.83	.84	.86	.88
1963	.86	.85	.85	.86	.86	.86	.85	.84	.84	.88	.88	.89
1964	.90	.91	.89	.90	.85	.85	.85	.89	.90	.91	.90	.92
1965 ¹	.94	.94	.94	.95	.95	.93	.91	.91	.91	.91	.91	.91
BARLEY (dollars per bushel)												
1961	.95	.95	.95	.93	.95	.88	.95	.96	.97	1.00	1.05	1.05
1962	1.05	1.05	1.02	1.02	1.00	.99	1.01	1.01	1.01	1.01	1.02	1.05
1963	1.07	1.07	1.06	1.04	1.03	.97	1.00	1.00	.97	1.00	1.01	1.03
1964	1.06	1.10	1.05	1.03	1.00	.98	.93	.97	.99	.99	1.00	1.03
1965 ¹	1.08	1.04	1.04	1.02	1.02	1.02	1.02	1.05	1.05	1.03	1.05	1.07
GRAIN SORGHUM (dollars per hundredweight)												
1961	1.58	1.60	1.62	1.62	1.65	1.80	1.80	1.77	1.72	1.68	1.70	1.72
1962	1.72	1.75	1.76	1.73	1.75	1.73	1.76	1.73	1.73	1.73	1.74	1.77
1963	1.78	1.80	1.80	1.78	1.84	1.85	1.81	1.86	1.83	1.84	1.86	1.89
1964	1.91	1.88	1.87	1.90	1.89	1.90	1.90	1.91	1.89	1.94	2.00	2.01
1965 ¹	1.99	1.96	1.98	1.98	2.01	2.01	1.98	1.96	1.86	1.80	1.78	1.78
BEANS (dollars per hundredweight)												
1961	7.50	7.20	7.20	7.20	7.20	7.10	7.00	6.90	7.00	6.90	7.00	6.50
1962	6.00	6.00	6.00	6.00	6.00	5.90	5.80	5.80	6.20	6.70	6.90	6.70
1963	6.70	6.70	6.70	6.40	6.20	6.30	6.70	7.00	6.50	6.40	6.30	6.30
1964	6.10	6.10	6.10	6.30	6.20	6.10	6.20	6.30	6.40	7.50	8.00	8.50
1965 ¹	9.50	9.50	9.70	9.70	9.60	10.00	16.00	15.00	8.00	10.00	10.00	9.50
UPLAND COTTON (cents per pound)												
1961	30.5	29.0	28.9	30.9	31.3	31.5	32.0	---	34.5	36.4	35.0	33.0
1962	31.0	27.0	31.0	33.0	34.0	34.5	35.5	---	33.0	32.0	31.5	30.2
1963	30.5	31.5	34.5	35.0	34.0	33.5	34.0	33.0	33.0	33.0	33.5	32.0
1964	31.5	32.5	33.0	33.0	35.0	34.5	35.0	---	36.0	36.0	36.5	33.6
1965 ¹	29.0	31.5	31.0	31.0	31.5	33.0	33.5	---	32.0	32.5	33.0	32.5
ALL HAY (dollars per ton)												
1961	30.50	30.50	31.50	29.50	25.00	21.70	21.70	21.50	22.00	24.50	26.60	
1962	27.90	27.90	27.90	27.90	21.70	23.70	22.70	21.70	23.70	24.50	29.30	
1963	29.60	30.00	30.50	32.50	30.50	27.50	25.50	28.00	27.20	31.50	34.60	37.50
1964	35.50	36.50	36.50	35.50	26.50	25.20	24.00	24.50	27.20	30.60	31.60	33.60
1965 ¹	35.30	33.80	30.50	30.40	25.60	22.70	21.00	20.80	20.40	21.30	24.20	25.60

¹Subject to revision.

New Mexico Agricultural Statistics

PRICES RECEIVED BY FARMERS AND RANCHERS: Principal livestock and livestock products, by months, and years, 1961-1965

Year	Jan.	Feb.	Mar.	Apr.	May	June	July	Aug.	Sept.	Oct.	Nov.	Dec.
BEEF CATTLE (dollars per 100 pounds)												
1961	20.80	20.80	21.50	22.00	20.30	19.30	19.80	20.50	21.30	22.10	21.20	20.80
1962	20.90	21.10	21.90	21.60	20.20	19.30	20.00	20.60	22.00	22.00	20.00	19.50
1963	19.90	20.70	21.10	21.20	19.70	19.70	21.20	21.00	21.50	21.50	18.70	17.80
1964	18.30	19.20	19.90	19.00	16.80	16.50	17.20	16.50	16.80	16.70	15.50	15.70
1965	16.60	17.10	18.30	19.90	20.40	21.00	20.40	20.70	20.30	21.00	19.80	19.00
CALVES (dollars per 100 pounds)												
1961	25.50	25.70	26.20	26.70	24.70	24.30	24.40	25.20	26.00	25.80	25.80	
1962	26.00	26.50	27.00	27.50	26.00	25.00	25.00	25.20	26.00	26.70	27.00	27.00
1963	26.00	25.50	25.00	26.50	25.00	24.50	25.00	26.00	26.00	25.00	24.50	24.00
1964	24.00	23.80	23.70	22.60	20.30	20.20	20.00	20.00	20.60	20.00	19.60	19.50
1965	19.80	19.70	19.80	21.00	21.00	23.20	22.90	23.00	24.00	23.00	23.30	23.80
HOGS (dollars per 100)												
1961	16.40	17.20	17.00	16.60	15.20	15.30	16.50	17.60	17.10	16.40	15.50	15.80
1962	16.30	16.20	15.90	15.50	15.20	15.40	16.70	17.30	17.70	16.50	16.30	16.00
1963	15.80	15.30	14.20	13.20	13.80	15.30	16.80	16.50	15.40	15.30	14.60	14.40
1964	15.00	15.20	14.80	14.50	15.10	15.50	17.00	16.20	16.50	15.60	14.60	14.90
1965	15.60	16.30	16.30	16.80	19.30	22.20	23.70	24.20	22.30	22.80	22.90	27.50
SHEEP (dollars per 100 pounds)												
1961	5.30	6.00	6.50	6.00	5.00	4.20	4.20	4.00	3.80	4.00	5.00	5.30
1962	5.50	5.50	5.80	5.20	4.90	4.70	5.20	4.90	5.20	5.20	5.60	5.50
1963	6.20	6.50	6.50	6.70	6.00	6.50	5.70	5.60	5.50	5.50	5.50	6.00
1964	6.20	6.60	6.60	6.50	6.50	5.50	5.50	5.00	5.50	6.00	6.00	6.50
1965	7.00	7.00	7.30	8.00	7.50	7.50	8.00	8.00	8.00	7.80	7.90	9.20
LAMBS (dollars per 100 pounds)												
1961	15.50	16.00	15.50	15.00	14.50	14.50	14.50	13.50	14.20	14.40	14.70	14.80
1962	14.00	13.80	14.00	14.20	15.70	16.00	16.00	16.20	16.40	16.30	16.70	16.90
1963	16.90	16.50	16.00	16.50	16.50	16.50	15.50	15.00	15.00	15.50	15.50	15.50
1964	15.80	16.50	18.00	18.00	17.50	16.80	16.80	16.80	17.00	17.70	18.00	18.50
1965	19.50	20.40	21.50	21.50	21.00	22.50	21.50	22.00	22.00	21.50	22.00	24.00
CHICKENS (cents per pound)												
1961	12.0	12.0	11.0	10.0	11.0	10.0	09.5	09.5	09.5	09.0	11.0	12.0
1962	12.0	12.0	11.0	10.0	10.0	09.5	10.0	11.0	12.0	11.0	11.0	10.0
1963	09.5	10.0	10.0	10.0	10.0	09.5	10.0	10.0	10.0	09.5	10.0	10.0
1964	10.5	10.0	09.0	09.0	09.5	09.5	09.5	09.0	09.0	09.0	09.0	09.0
1965	09.0	09.0	09.5	09.5	09.0	09.5	09.5	09.5	09.5	09.0	09.0	09.0
EGGS (cents per dozen)												
1961	42.0	40.0	39.0	37.0	34.0	33.0	39.0	40.0	41.0	42.0	40.0	39.0
1962	39.0	38.0	34.0	32.0	31.0	30.0	33.0	35.0	39.0	40.0	39.0	39.0
1963	37.0	37.0	36.0	32.0	30.0	29.0	30.0	35.0	37.0	37.0	38.0	39.0
1964	39.0	35.0	34.0	30.0	29.0	29.0	31.0	35.0	38.0	37.0	37.0	35.0
1965	33.0	32.0	31.0	33.0	34.0	34.0	34.0	37.0	39.0	41.0	41.0	43.0
MILK WHOLESALE (dollars per 100 pounds)												
1961	5.55	5.45	5.35	5.15	4.95	4.75	4.90	4.65	4.95	5.05	5.15	5.20
1962	5.25	5.25	5.05	4.90	4.65	4.55	4.75	5.00	5.10	5.30	5.35	5.30
1963	5.40	5.25	5.00	4.70	4.55	4.40	4.90	4.95	5.25	5.40	5.50	5.45
1964	5.55	5.50	5.05	4.90	4.65	4.50	4.75	4.85	5.20	5.35	5.35	5.45
1965	5.40	5.35	5.00	4.85	4.70	4.55	4.70	4.80	5.10	5.25	5.35	5.45
WOOL (cents per pound)												
1961	35	36	40	40	41	38	38	38	38	38	39	41
1962	40	38	46	44	46	40	41	40	39	42	42	44
1963	46	52	52	45	44	43	40	38	43	44	44	51
1964	55	54	55	50	42	41	44	44	46	45	43	41
1965	38	43	42	40	38	35	34	40	38	38	45	42

NEW MEXICO CROP REPORTING DISTRICTS

