

# NEW MEXICO DEPARTMENT OF AGRICULTURE

New Mexico State University  
Las Cruces, New Mexico 88001  
DALLAS RIERSON, Director

COOPERATING WITH  
UNITED STATES DEPARTMENT OF AGRICULTURE  
Statistical Reporting Service

COMPILED BY  
NEW MEXICO CROP AND LIVESTOCK  
REPORTING SERVICE

Joe D. Herman-Agricultural Statistician in Charge  
Larry Losleben-Agricultural Statistician  
Dale Hopkins-Agricultural Statistician  
Meryl R. Hunt-Agricultural Statistician  
Lavern Anderson-Agricultural Statistician  
Gustav J. Meier Jr.-Agricultural Statistician  
Hazel M. Hobbs-Supervisory Statistical Assistant  
Statistical Clerical Staff

1480 North Main

P. O. Drawer 580  
Las Cruces, New Mexico 88001

## New Mexico Agricultural Statistics

1

### TABLE OF CONTENTS

	Pages
FOREWARD .....	2
CLIMATE OF NEW MEXICO .....	3
PLANTING AND HARVESTING DATES .....	4
CROP SUMMARY .....	5
PRINCIPAL CROPS .....	6
FARM INCOME TABLES .....	7
LIVESTOCK SUMMARY .....	32
NEW MEXICO OUTSHIPMENTS AND INSHIPMENTS OF CATTLE .....	40-41
PRICES RECEIVED .....	44
STATE TABLES	
GRAIN AND HAY STOCKS .....	8
LIVESTOCK .....	33
COUNTY ESTIMATES	
COTTON .....	10-13
GRAINS .....	14-21
Barley .....	14-15
Corn .....	16-17
Sorghum .....	18-19
Wheat .....	20-21
MISCELLANEOUS CROPS .....	22-27
Hays .....	22-23
Alfalfa Seed .....	23
Broomcorn .....	24
Potatoes .....	25
Sweetpotatoes .....	25
Peanuts .....	25
Dry Beans .....	26-27
VEGETABLES .....	28-29
Lettuce .....	28
Tomatoes for Processing .....	28
Onions .....	29
FRUITS .....	29
Apples .....	29
LIVESTOCK .....	31-39
Cattle .....	42-43
Milk Cows .....	42-43
Hogs .....	42-43
Sheep .....	42-43
Chickens .....	42-43
Cattle and Sheep on Feed .....	44
VALUE OF CROP PRODUCTION AND LIVESTOCK INVENTORY VALUE	
Individual and Total Value of Principal Crops .....	46-49
Livestock Inventory Values by Species .....	50-51



## NEW MEXICO STATE UNIVERSITY

BOX 3189, LAS CRUCES, NEW MEXICO 88001  
NEW MEXICO DEPARTMENT OF AGRICULTURE, AREA 505 646-3007

Office of the Director

## FOREWARD

New Mexico agriculture is faced with keeping in step with new requirements and needs of the consumer. In addition, allied industries must keep pace with changes in agriculture to meet its needs in order to adequately provide food and fiber to the people of this country and the world.

To assist all concerned, we take pride in presenting Volume VI, Supplement 4 of New Mexico Agricultural Statistics bringing up to date agricultural production by counties and production values of the major crops of New Mexico.

This work is a cooperative program of the New Mexico Department of Agriculture and the Statistical Reporting Service of the United States Department of Agriculture.

*Dallas Rierson*  
Dallas Rierson  
Director

## CLIMATE OF NEW MEXICO

AVERAGE FIRST FALL AND LAST SPRING DATE OF 32°, DAYS BETWEEN DATES, RECORD AVERAGE, PRECIPITATION, 1969-70

County and Station	Freeze data years of record	Average first date of 32 degrees	Average last spring date of 32 degrees	Average number of days between dates	Precipitation (in inches)		
					Average 1931-1960 or * for period of record through 1969	1969	1970
Bernalillo Albuquerque Airport	30	Oct. 31	Apr. 13	201	8.13	10.56	6.28
Sandoval Jemez Springs	58	Oct. 21	May 1	173	17.68	22.93	16.61
San Juan Fruitland	56	Oct. 8	May 10	151	* 6.81	12.31	7.27
Aztec Ruins Natl. Monument	57	Oct. 10	May 11	152	9.82	11.47	8.78
Santa Fe Santa Fe	93	Oct. 14	May 6	161	13.76	19.56	11.58
Taos Taos	68	Oct. 3	May 17	139	12.08	14.82	10.93
Valencia Los Lunas	69	Oct. 18	Apr. 24	177	* 7.90	10.31	5.90
San Fidel	43	Oct. 13	May 7	159	* 9.56	10.16	7.70
Colfax Raton	16	Oct. 8	May 10	152	*16.34	21.28	16.86
Springer	73	Oct. 5	May 8	150	15.59	23.19	11.99
Curry Clovis	56	Oct. 28	Apr. 15	196	17.48	24.30	15.27
Melrose	27	Oct. 23	Apr. 19	187	15.13	20.79	12.81
De Baca Ft. Sumner	57	Oct. 23	Apr. 18	188	13.74	18.71	14.69
Alamogordo Dam	31	Oct. 29	Apr. 15	197	*12.36	18.03	11.84
Guadalupe Santa Rosa	59	Oct. 25	Apr. 17	191	13.92	21.90	9.06
Quay Tucumcari	64	Oct. 27	Apr. 15	195	15.07	22.10	14.11
San Jon	62	Oct. 25	Apr. 22	186	15.18	26.28	15.79
Roosevelt Portales	57	Oct. 19	Apr. 23	179	16.94	22.44	10.39
Elida	29	Oct. 26	Apr. 17	192	15.09	17.97	9.65
San Miguel Las Vegas Airport	29	Oct. 9	May 12	150	*15.07	21.61	14.46
Bell Ranch	65	Oct. 22	Apr. 21	184	14.52	22.83	7.01
Torrance Estancia	49	Oct. 1	May 20	134	*11.82	17.79	9.38
Union Clayton	63	Oct. 20	Apr. 27	176	14.51	25.70	10.36
Des Moines	53	Oct. 4	May 14	143	17.91	24.43	14.15
Catron Quemado	39	Sept. 24	June 8	108	10.40	13.27	9.27
Grant Ft. Bayard	71	Oct. 24	Apr. 28	179	14.41	14.31	11.67
Hachita	51	Nov. 3	Apr. 14	203	9.54	6.51	9.00
Hidalgo Lordsburg	42	Nov. 5	Apr. 5	214	10.10	11.13	6.25
Animas	41	Oct. 28	Apr. 24	187	9.99	8.25	8.96
Luna Deming Airport	8	Oct. 29	Apr. 24	188	* 8.34	7.88	6.26
Sierra Caballo Dam	33	Nov. 4	Apr. 6	212	* 8.40	7.50	6.93
Winston	23	Oct. 8	May 14	147	12.14	15.84	11.41
Hillsboro	27	Oct. 27	Apr. 17	193	10.98	13.49	8.50
Socorro Socorro	73	Oct. 24	Apr. 12	195	8.75	8.34	5.07
Agustine	38	Sept. 26	May 30	119	10.51	9.70	6.90
Chaves Roswell	76	Oct. 29	Apr. 8	204	11.62	13.33	8.63
Elk	58	Oct. 16	Apr. 30	169	15.84	18.89	9.45
Dona Ana State University	78	Oct. 28	Apr. 9	202	8.01	11.91	3.44
Hatch	56	Oct. 24	Apr. 11	196	8.94	7.82	6.07
Eddy Carlsbad	73	Nov. 5	Apr. 2	217	12.45	12.40	8.09
Artesia	61	Oct. 28	Apr. 12	199	11.33	12.20	10.00
Lea Hobbs	50	Nov. 4	Apr. 8	210	*14.87	20.64	10.61
Jal	28	Nov. 2	Apr. 1	215	*11.31	17.86	10.13
Lincoln Ft. Stanton	71	Oct. 7	May 7	153	*15.24	14.09	8.32
Corona	56	Oct. 14	May 6	161	15.87	20.33	10.68
Otero Alamogordo	51	Nov. 5	Apr. 6	213	9.80	14.18	5.88
Clouderoft	67	Sept. 29	May 19	133	25.74	27.47	15.33

Source: National Oceanic and Atmospheric Administration, Natl. Weather Service Office for State Climatology

## USUAL PLANTING AND HARVESTING DATES

Crop	1970 harvested acreage	Usual planting dates	Usual harvesting dates			Principal Counties
			Begins	Most Active	Ends	
(1,000 acres)						
BARLEY						
Fall Sown	16	Sept. 1-Nov. 1 Feb. 15-Apr. 1	June 10	June 15-July 10	July 20	Chaves-Dona Ana-Eddy
Spring Sown			June 20	June 25-July 15	Aug. 1	
BEANS, dry	4	May 15-June 15	Sept. 1	Sept. 10-Oct. 1	Oct. 15	McKinley-Torrance-Luna
BROOMCORN	20	May 20-July 1	Aug. 20	Sept. 10-Oct. 10	Nov. 1	Quay-Roosevelt
CORN, all	45	Apr. 15-June 1	Sept. 15	Oct. 10-Nov. 1	Dec. 1	San Juan-Santa Fe-Torrance
COTTON	142.3	Apr. 1-May 15	Sept. 25	Oct. 15-Nov. 20	Jan. 1	Chaves-Dona Ana-Eddy
HAY, alfalfa	217		May 1		Oct. 20	Chaves-Dona Ana-Eddy
PEANUTS for nuts	8.0	May 10-June 1	Oct. 1	Oct. 10-Oct. 25	Nov. 10	Roosevelt
SORGHUM						
Grain	307	May 10-July 10	Oct. 1	Oct. 10-Nov. 10	Dec. 1	Curry-Roosevelt-Lea
Silage	15	May 10-June 20	Aug. 15	Sept. 5-Oct. 1	Oct. 20	
SUGAR BEETS		Feb. 1-Mar. 15	Nov. 1	Nov. 10-Dec. 1	Dec. 15	Curry-Hidalgo
WHEAT, winter	184	Sept. 1-Oct. 20	June 5	June 15-July 5	July 20	Curry-Quay-Roosevelt
<u>SEED CROPS:</u>						
ALFALFA	2.6		July 25	Aug. 15-Sept. 15	Oct. 1	Chaves-Dona Ana-Eddy
<u>VEGETABLES:</u>						
LETTUCE						
Early spring	3.0	Jan. 1-Jan. 15	Apr. 25	May 1-May 31	June 5	Dona Ana
Early fall	4.3	Aug. 1-Aug. 15	Oct. 5	Oct. 10-Oct. 31	Nov. 10	Dona Ana
ONIONS						
Grano	2.7	Oct. 1-Oct. 15	May 25	June 1-Aug. 31	Oct. 15	Lea-Dona Ana-Luna-Hidalgo
Sweet Spanish		Feb. 1-Feb. 15				
TOMATOES, all	.7	Apr. 15-May 20	Sept. 1	Sept. 1-Oct. 31	Nov. 1	Luna-Otero-Dona Ana
POTATOES	2.4	May 1-June 15	July 25	Aug. 15-Oct. 31	Nov. 15	Santa Fe-Torrance
APPLES						
North	...		Aug. 15	Sept. 5-Oct. 20	Oct. 30	San Juan-Rio Arriba Bernalillo-Sandoval Santa Fe
South	...		Aug. 15	Aug. 30-Oct. 15	Oct. 30	Lincoln-Otero-De Baca

## Annual Crop Summary

Cash receipts from crop marketings in New Mexico totaled \$89,012,000, down 3 percent from last year's receipts of \$91,451,000. Realized Net Income per farm decreased by 4 percent and is currently estimated at \$8,709. This figure excludes changes in inventories and represents average income of the farm and ranch operators. The decrease in cash receipts from crops was mainly due to vegetables and cotton.

Wheat production in 1970 totaled 5,520,000 bushels. This represents a 29 percent increase from the 4,293,000 bushels produced in 1969. Acreage for harvest was up by 25,000 acres and is currently estimated at 184,000 acres. Moisture conditions were generally favorable throughout the fall of 1969 and the spring months of 1970. These favorable moisture conditions held dryland abandonment down, thus increasing the dryland acres for harvest. Yield per acre was up to 30.0 bushels in 1970 compared to 27.0 bushels in 1969. Excellent yields on some summer fallow dryland coupled with an increase in irrigated acres harvested accounts for this increase.

Total feed grain production of corn, barley and sorghum grain is estimated at 543,000 tons. This is 4 percent above last year's production of 520,968 tons. All three of the feed grains had slight increases in production. Sorghum grain production totaled 17,499,000 bushels, up 4 percent from the 16,856,000 bushels produced in 1969. Acreage for harvest increased to 307,000 from the 301,000 acres harvested in 1969. Excellent moisture conditions in late May and early June encouraged farmers to plant more dryland sorghum, accounting for the acreage increase. Yield per acre was up from 56.0 bushels in 1969 to 57.0 bushels in 1970. This slight increase in yield per acre can be attributed to a little better yield on irrigated acres than in the past. Corn for grain production increased 2 percent in 1970 and is currently estimated at 1,071,000 bushels. Harvested acres were unchanged at 17,000 acres. Yield per acre increased by one bushel from last year and is currently at 63.0 bushels per acre, a new record high for New Mexico. Production of barley for grain, at 960,000 bushels in 1970, was up 18 percent from last year's level of 812,000 bushels. Harvested acres at 16,000 in 1970, is 2,000 acres above the 1969 level. Yield per acre was also up in 1970 by 2 bushels and is currently estimated at 60.0 bushels per acre.

All cotton production for 1970 is estimated at 143,200 bales, down 13,800 bales from the 1969 crop. Acreage for harvest at 141,300, was down 4,700 acres from the 146,000 acres in 1969. Yield per acre continued on a downward trend and is estimated at 486 pounds per acre, down from the 517 pounds per acre produced in 1969. Unfavorable weather and insects continue to plague cotton farmers.

Production of all hay is estimated at 1,044,000 tons, down 19,000 tons from that produced last year. Alfalfa hay represents 89 percent of all hay and the other 11 percent is wild, grain, clo-tim and other tame hay. The decrease in production of all hay was due to a decrease in yield per acre from 3.63 tons per acre in 1969 to 3.48 tons per acre in 1970. Alfalfa production was also down 17,000 tons which was due to a decrease in yield per acre caused by unfavorable weather conditions during harvest.

Broomcorn production decreased from 3,800 tons in 1969 to 2,800 tons in 1970. Acreage for harvest was down 6,000 acres and is currently estimated at 20,000 acres. Yield per acre decreased from 290 pounds in 1969 to 280 pounds in 1970. Production of peanuts at 18,286,000 pounds was up from the 17,479,000 pounds produced in 1969. Acres for harvest increased from 7,700 acres in 1969 to 8,200 acres in 1970. Yield per acre was down 40 pounds from the 2,270 pounds per acre in 1969.

Irish Potato production increased 20 percent in 1970 to 575,000 cwt. Yield per acre increased by 65 cwt. per acre and is currently estimated at 230 cwt. per acre. The increase in yield per acre was mainly due to new plantings in Roosevelt county where extremely good yields were received. Apple production increased slightly from 24,900,000 pounds in 1969 to 27,000,000 pounds in 1970. Pecan production, estimated at 8,500,000 pounds, is 1,800,000 pounds higher than that produced in 1969.

Commodity	Unit	Acreage harvested		Yield per acre		Production		Season Average Price		Value of Production	
		1969	1970 <sup>1/</sup>	1969	1970 <sup>1/</sup>	1969	1970 <sup>1/</sup>	1969	1970 <sup>1/</sup>	1969	1970 <sup>1/</sup>
		1,000 acres	1,000 acres	See Unit Column		1,000	1,000	Dollars	Dollars	1,000 Dollars	1,000 Dollars
<b>GENERAL CROPS</b>											
Corn for grain	Bu.	17	17	62.0	63.0	1054	1071	1.40	1.47	1476	1574
Corn for silage	Tons	29	24	15.5	17.5	450	420	---	---	---	---
Corn for forage	Tons	4	4	---	---	---	---	---	---	---	---
All Wheat	Bu.	159	184	27.0	30.0	4293	5520	1.29	1.35	5538	7452
Barley	Bu.	14	16	58.0	60.0	812	960	1.06	1.05	861	1008
Sorghum Grain	Bu.	301	307	56.0	57.0	16856	17499	1.16	1.16	19553	20299
Sorghum Silage	Tons	6	15	11.5	10.5	69	158	---	---	---	---
Sorghum Forage	Tons	85	74	---	---	---	---	---	---	---	---
Broomcorn	Tons	26	20	2/290	2/280	3.8	2.8	350.00	410.00	1330	1148
Cotton Lint	Lbs.	146.0	141.3	517	486	3/157	3/143.2	.2534	.2430	19886	17317
Cottonseed	Tons	---	---	---	---	64	54	45.50	61.00	2912	3294
Beans, dry	Lbs.	5	4	530	600	4/27	4/24	7.50	8.50	203	204
Potatoes	Cwt.	2.9	2.4	165	230	478	575	2.38	2.61	1138	1501
Peanuts	Lbs.	7.7	8.1	2270	2250	17479	18226	.133	.144	2325	2633
<b>SEED CROPS</b>											
Alfalfa Seed	Lbs.	3.5	2.6	180	200	630	520	52.00	49.00	328	255
<b>HAY CROPS</b>											
All Hay	Tons	293	300	3.63	3.48	1063	1044	27.00	29.50	28701	30798
Alfalfa	Tons	211	217	4.50	4.30	950	933	---	---	---	---
Clow-Tim Hay	Tons	17	21	1.45	1.30	25	27	---	---	---	---
Grain	Tons	22	23	1.60	1.65	35	38	---	---	---	---
Other Tame Hay	Tons	18	17	1.60	1.55	29	26	---	---	---	---
Wild Hay	Tons	25	22	.95	.90	24	20	---	---	---	---
<b>FRUITS AND NUTS</b>											
Pecans, Improved	Lbs.	---	---	---	---	6700	8500	.370	.470	2479	3995
Apples	Lbs.	---	---	---	---	24900	27000	.0585	.0530	1457	1431
<b>COMMERCIAL VEGETABLES</b>											
Lettuce, Early Spring Cwt.		4.8	3.0	150	140	5/720	420	3.58	2.82	2578	1184
Lettuce, early fall Cwt.		5.1	4.3	210	200	1071	860	7.54	5.10	8075	4386
Onions, early summer Cwt.		3.4	2.7	275	290	935	783	3.52	4.53	3291	3547
Tomatoes for processing (Tons)		.8	.7	12.0	10.0	9.6	7.0	34.00	34.00	326	238

<sup>1/</sup> Preliminary. <sup>2/</sup> Pounds. <sup>3/</sup> 500 Pound gross weight bales. <sup>4/</sup> Bags of 100 pounds. <sup>5/</sup> Not harvested 1969: 480000 Cwt.

FARM INCOME  
REALIZED GROSS AND NET INCOME OF FARM OPERATORS FROM FARMING, AND TOTAL, 1966-1969

Item	Year			
	1966	1967	1968	1969 <sup>1/</sup>
Number of Farms	14.6	14.3	14.0	13.8
---1,000---				
---1,000,000 dollars---				
Cash receipts from farm marketings	289.2	299.5	314.5	390.3
Government payments	37.5	33.3	36.0	41.6
Value of home consumption	4.1	4.0	4.1	4.1
Gross rental value of farm dwellings	10.8	11.0	11.2	11.6
TOTAL	341.6	347.8	365.7	447.6
Farm production expenses	218.1	234.8	232.5	321.8
Realized net farm income	123.5	113.0	133.2	125.8
Net changes in farm inventories	-1.3	-0.6	10.2	9.3
TOTAL NET FARM INCOME	122.2	112.4	123.4	135.2

CASH RECEIPTS FROM FARM MARKETINGS, BY COMMODITIES, 1966-1969

Commodity	Year			
	1966	1967	1968	1969 <sup>1/</sup>
---1,000 dollars---				
Cattle and calves	154589	166709	181087	256526
Sheep and lambs	6371	5957	6368	6078
Wool	4202	3300	3171	3122
Cotton lint	32120	23584	16541	14665
Cottonseed	5380	3824	3707	3053
Wheat	6819	5279	5988	6597
Sorghum grain	11711	14316	14446	15609
Hay	13729	16187	16684	16547
Broomcorn	1708	1444	1489	1463
Dry beans	317	213	150	160
Apples	1897	236	2494	1823
Peanuts	2067	2027	2452	2563
Pecans	3259	1344	4826	2756

<sup>1/</sup> Preliminary

### New Mexico Agricultural Statistics

GRAIN STOCKS: QUANTITIES STORED ON AND OFF FARMS, 1969, 1970, and 1971

Year	On farms				Off farms			
	Jan. 1	Apr. 1	July 1	Oct. 1	Jan. 1	Apr. 1	July 1	Oct. 1
	1,000 bushels	1,000 bushels	1,000 bushels	1,000 bushels	1,000 bushels	1,000 bushels	1,000 bushels	1,000 bushels
<b>WHEAT</b>								
1969 ....	724	534	381	730	2567	2491	2386	2935
1970 ....	343	215	86	938	3347	2287	2152	4195
1971 1/..	662	276	---	---	2752	2303	---	---
<b>CORN</b>								
1969 ....	928	500	306	122	NA	NA	NA	NA
1970 ....	738	369	211	84	124	122	76	59
1971 1/..	675	375	---	---	83	NA	---	---
<b>BARLEY</b>								
1969 ....	146	107	44	195	210	85	43	159
1970 ....	130	97	49	211	114	163	124	146
1971 1/..	144	115	--	---	148	93	---	---
<b>GRAIN SORGHUM</b>								
1969 ....	2913	1214	485	243	7125	5361	3417	1997
1970 ....	2360	1517	843	253	7547	5550	3481	1811
1971 1/..	2800	1750	---	---	6986	3679	---	---

1/ Preliminary. NA - Not available.

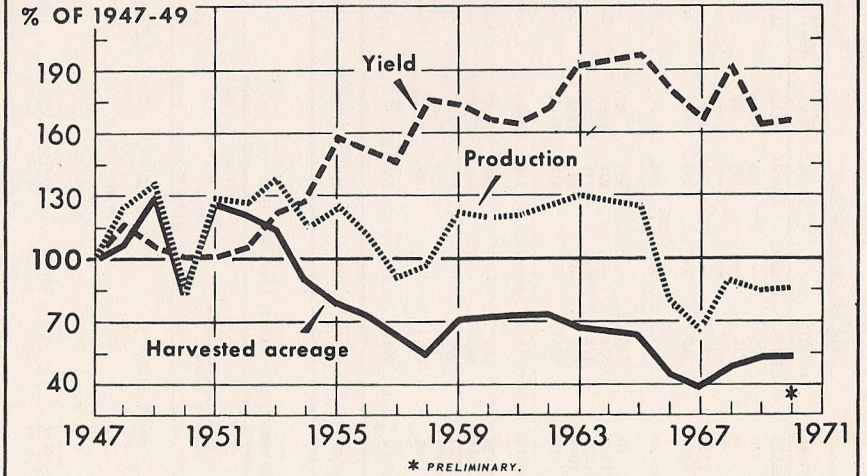
HAY STOCKS: QUANTITIES STORED ON FARMS, 1969, 1970 and 1971

1969		1970		1971 1/	
Jan. 1	May 1	Jan. 1	May 1	Jan. 1	May 1
1,000 tons	1,000 tons	1,000 tons	1,000 tons	1,000 tons	1,000 tons
524	126	436	138	418	---

1/ Preliminary.

### New Mexico Agricultural Statistics

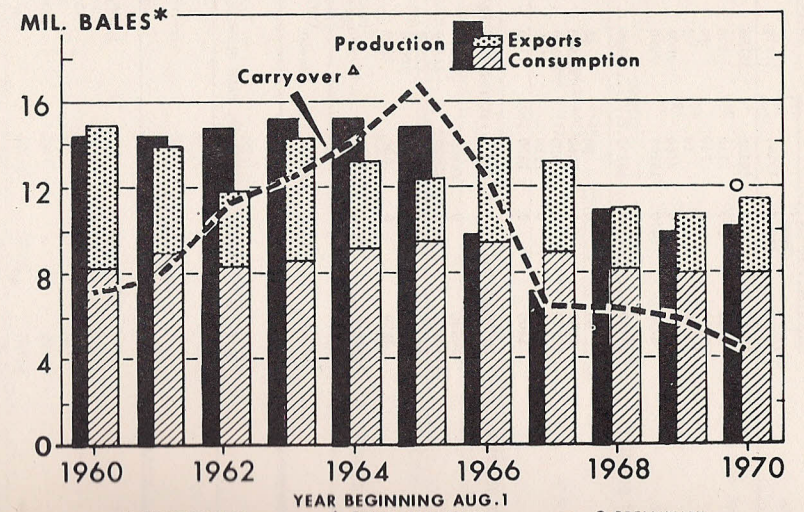
#### COTTON: ACREAGE, YIELD, AND PRODUCTION



U.S. DEPARTMENT OF AGRICULTURE

NEG. ERS 1674X-71 (5) ECONOMIC RESEARCH SERVICE

#### COTTON PRODUCTION, USE, AND CARRYOVER



U.S. DEPARTMENT OF AGRICULTURE

NEG. ERS 1971-71 (5) ECONOMIC RESEARCH SERVICE

ALL COTTON: ACREAGE, YIELD, AND PRODUCTION, BY COUNTIES, IRRIGATED AND NON-IRRIGATED 1969

	Acres Planted			Acres Harvested			Yield per Harvested Acre			Production (500 lb. gross weight bales)		
	Irrig.	Non-Irrig.	Total	Irrig.	Non-Irrig.	Total	Irrig.	Non-Irrig.	Total	Irrig.	Non-Irrig.	Total
	Acres	Acres	Acres	Acres	Acres	Acres	Pounds	Pounds	Pounds	Bales	Bales	Bales
Curry	1010	100	1110	730	0	730	185	---	185	280	---	280
De Baca	250	0	250	20	0	20	750	---	750	30	---	30
Harding	10	0	10	0	0	0	---	---	---	---	---	---
Quay	2180	0	2180	2000	0	2000	284	---	284	1180	---	1180
Roosevelt	8750	6450	15200	7350	1450	8800	318	200	299	4850	600	5450
NORTHEAST DISTRICT	12200	6550	18750	10100	1450	11550	303	200	290	6340	600	6940
Grant	80	0	80	60	0	60	633	---	633	80	---	80
Hidalgo	3060	0	3060	2970	0	2970	826	---	826	5100	---	5100
Luna	13600	0	13600	13120	0	13120	779	---	779	21300	---	21300
Sierra	2110	0	2110	2040	0	2040	432	---	432	1830	---	1830
Socorro	1400	0	1400	1120	0	1120	614	---	614	1440	---	1440
SOUTHWEST DISTRICT	20250	0	20250	19310	0	19310	740	---	740	29750	---	29750
Chaves	28600	0	28600	26130	0	26130	645	---	645	35100	---	35100
Dona Ana	48400	0	48400	44070	0	44070	443	---	443	40700	---	40700
Eddy	23000	0	23000	21900	0	21900	609	---	609	27730	---	27730
Lea	21400	200	21600	20650	150	20800	361	200	359	15440	60	15500
Otero	2400	0	2400	2240	0	2240	274	---	274	1280	---	1280
SOUTHEAST DISTRICT	123800	200	124000	114990	150	115140	503	200	502	120250	60	120310
STATE	156250	6750	163000	144400	1600	146000	520	200	517	156340	660	157000

COTTONSEED: PRODUCTION, FARM DISPOSITION, PRICE, AND VALUE, 1967, 1968, 1969, and 1970

Year	Production 1,000 tons	Farm Disposition		Season Average Price Per Ton Dollars	Value of Production 1,000 dollars
		Sold	Used on Farms		
		1,000 tons	1,000 tons		
1967	68	65	3	59.60	4053
1968	74	71	3	52.90	3915
1969	64	61	3	45.50	2912
1970	54	51	3	61.00	3294

ALL COTTON: ACREAGE, YIELD, AND PRODUCTION BY COUNTIES, IRRIGATED AND NON-IRRIGATED 1970

County	Acres Planted			Acres Harvested			Yield per Harvested Acre			Production (500 lb. gross weight bales)		
	Irrig.	Non-Irrig.	Total	Irrig.	Non-Irrig.	Total	Irrig.	Non-Irrig.	Total	Irrig.	Non-Irrig.	Total
	Acres	Acres	Acres	Acres	Acres	Acres	Pounds	Pounds	Pounds	Bales	Bales	Bales
Curry	1160	0	1160	940	0	940	367	---	367	720	---	720
De Baca	220	0	220	50	0	50	576	---	576	60	---	60
Harding	10	0	10	10	0	10	480	---	480	10	---	10
Quay	2100	0	2100	1800	0	1800	373	---	373	1400	---	1400
Roosevelt	9800	3500	13300	4700	3000	7700	396	210	324	3890	1310	5200
NORTHEAST DISTRICT	13290	3500	16790	7500	3000	10500	388	210	337	6080	1310	7390
Grant	80	0	80	80	0	80	600	---	600	100	---	100
Hidalgo	3010	0	3010	2915	0	2915	824	---	824	5008	---	5008
Luna	14460	0	14460	14230	0	14230	655	---	655	19450	---	19450
Sierra	2010	0	2010	1970	0	1970	485	---	485	1992	---	1992
Socorro	1310	0	1310	1220	0	1220	452	---	452	1150	---	1150
SOUTHWEST DISTRICT	20870	0	20870	20415	0	20415	650	---	650	27700	---	27700
Chaves	26980	0	26980	25020	0	25020	452	---	452	23600	---	23600
Dona Ana	45000	0	45000	44620	0	44620	523	---	523	48740	---	48740
Eddy	21830	0	21830	20620	0	20620	534	---	534	22962	---	22962
Lea	21040	160	21200	18390	110	18500	300	200	299	11505	45	11550
Otero	1830	0	1830	1625	0	1625	371	---	371	1258	---	1258
SOUTHEAST DISTRICT	116680	160	116840	110275	110	110385	470	200	469	108065	45	108110
STATE	150840	3660	154500	138190	3110	141300	492	210	486	141845	1355	143200

AMERICAN PIMA COTTON: ACREAGE, YIELD, AND PRODUCTION, BY COUNTIES, ALL IRRIGATED, 1969 AND 1970

County	1969			1970		
	Acres		Yield per harvested acre	Acres		Yield per harvested acre
	Planted	Harvested	Pounds	Planted	Harvested	Pounds
Hidalgo	20	20	340	15	15	253
Luna	970	920	583	2260	2230	450
Sierra	130	120	647	75	70	217
SOUTHWEST DISTRICT	1120	1060	585	2350	2315	441
Chaves	240	230	443	280	220	217
Dona Ana	14460	13070	389	12700	12620	318
Eddy	140	100	415	130	120	247
Otero	40	40	110	40	25	152
SOUTHEAST DISTRICT	14880	13440	389	13150	12985	315
STATE	16000	14500	404	15500	15300	334

UPLAND COTTON: ACREAGE, YIELD, AND PRODUCTION BY COUNTIES, IRRIGATED AND NON-IRRIGATED 1969

County	Acres Planted			Acres Harvested			Yield per Harvested Acre			Production (500 lb. gross weight bales)		
	Irrig.	Non-irrig.	Total	Irrig.	Non-irrig.	Total	Irrig.	Non-irrig.	Total	Irrig.	Non-irrig.	Total
	Acres	Acres	Acres	Acres	Acres	Acres	Pounds	Pounds	Pounds	Bales	Bales	Bales
Curry	1010	100	1110	730	0	730	185	---	185	280	---	280
De Baca	250	0	250	20	0	20	750	---	750	30	---	30
Harding	10	0	10	0	0	0	---	---	---	---	---	---
Quay	2180	0	2180	2000	0	2000	284	---	284	1180	---	1180
Roosevelt	8750	6450	15200	7350	1450	8800	318	200	299	4850	600	5450
NORTHEAST DISTRICT	12200	6550	18750	10100	1450	11550	303	200	290	6340	600	6940
Grant	80	0	80	60	0	60	633	---	633	80	---	80
Hidalgo	3040	0	3040	2950	0	2950	829	---	829	5085	---	5085
Luna	12630	0	12630	12200	0	12200	794	---	794	20185	---	20185
Sierra	1980	0	1980	1920	0	1920	418	---	418	1670	---	1670
Socorro	1400	0	1400	1120	0	1120	614	---	614	1440	---	1440
SOUTHWEST DISTRICT	19130	0	19130	18250	0	18250	748	---	748	28460	---	28460
Chaves	28360	0	28360	25900	0	25900	647	---	647	34885	---	34885
Dona Ana	33940	0	33940	31000	0	31000	466	---	466	30100	---	30100
Hobby	22860	0	22860	21800	0	21800	610	---	610	27644	---	27644
Lea	21400	200	21600	20650	150	20800	361	200	359	15440	60	15500
Otero	2360	0	2360	2200	0	2200	277	---	277	1271	---	1271
SOUTHEAST DISTRICT	108920	200	109120	101550	150	101700	569	200	517	109340	60	109400
STATE	140250	6750	147000	129900	1600	131500	578	200	529	144140	660	144800

UPLAND COTTON: ACREAGE, YIELD, AND PRODUCTION, BY COUNTIES, IRRIGATED AND NON-IRRIGATED 1970

County	Acres Planted			Acres Harvested			Yield per Harvested Acre			Production (500 lb. gross weight bales)		
	Irrig.	Non-irrig.	Total	Irrig.	Non-irrig.	Total	Irrig.	Non-irrig.	Total	Irrig.	Non-irrig.	Total
	Acres	Acres	Acres	Acres	Acres	Acres	Pounds	Pounds	Pounds	Bales	Bales	Bales
Curry	1160	0	1160	940	0	940	367	---	367	720	---	720
De Baca	220	0	220	50	0	50	576	---	576	60	---	60
Harding	10	0	10	10	0	10	480	---	480	10	---	10
Quay	2100	0	2100	1800	0	1800	373	---	373	1400	---	1400
Roosevelt	9800	3500	13300	4700	3000	7700	396	210	324	3890	1310	5200
NORTHEAST DISTRICT	13290	3500	16790	7500	3000	10500	388	210	337	6080	1310	7390
Grant	80	0	80	80	0	80	600	---	600	100	---	100
Hidalgo	3000	0	3000	2900	0	2900	827	---	827	5000	---	5000
Luna	12200	0	12200	12000	0	12000	693	---	693	17350	---	17350
Sierra	1930	0	1930	1900	0	1900	495	---	495	1960	---	1960
Socorro	1310	0	1310	1220	0	1220	452	---	452	1150	---	1150
SOUTHWEST DISTRICT	18520	0	18520	18100	0	18100	677	---	677	25560	---	25560
Chaves	26700	0	26700	24800	0	24800	454	---	454	23500	---	23500
Dona Ana	32300	0	32300	32000	0	32000	604	---	604	40350	---	40350
Eddy	21700	0	21700	20500	0	20500	536	---	536	22900	---	22900
Lea	21040	160	21200	18390	110	18500	300	200	299	11505	45	11550
Otero	1790	0	1790	1600	0	1600	374	---	374	1250	---	1250
SOUTHEAST DISTRICT	103530	160	103690	97290	110	97400	490	200	490	99505	45	99550
State	135340	3660	139000	122890	3110	126000	512	210	504	131145	1355	132500

BARLEY: ACREAGE, YIELD AND PRODUCTION BY COUNTIES, IRRIGATED AND NON-IRRIGATED, 1969

County	Acres planted all purposes	Acres Harvested			Yield per harvested acre			Production		
		Irrig.	Non-Irrig.	Total	Irrig.	Non-Irrig.	Total	Irrig.	Non-Irrig.	Total
Bernalillo	100	80	0	80	40.0	----	40.0	3200	----	3200
McKinley	150	10	0	10	30.0	----	30.0	300	----	300
Rio Arriba	360	30	220	250	50.0	20.0	23.6	1500	4400	5900
Sandoval	50	0	0	0	----	----	----	----	----	----
San Juan	400	100	0	100	42.0	----	42.0	4200	----	4200
Santa Fe	330	100	0	100	103.0	----	103.0	10300	----	10300
Taos	1000	830	0	830	38.0	----	38.0	31540	----	31540
Valencia	1300	150	0	150	48.0	----	48.0	7200	----	7200
<b>NORTHWEST DISTRICT</b>	<b>3690</b>	<b>1300</b>	<b>220</b>	<b>1520</b>	<b>44.8</b>	<b>20.0</b>	<b>41.2</b>	<b>58240</b>	<b>4400</b>	<b>62640</b>
Colfax	480	390	0	390	52.0	----	52.0	20280	----	20280
Curry	2000	720	20	740	75.0	25.0	73.6	54000	500	54500
De Baca	30	30	0	30	52.0	----	52.0	1560	----	1560
Guadalupe	30	0	0	0	----	----	----	----	----	----
Harding	300	0	50	50	----	11.0	11.0	----	550	550
Mora	200	50	50	100	38.0	15.0	26.5	1900	750	2650
Quay	340	150	50	200	54.0	20.0	45.5	8100	1000	9100
Roosevelt	260	230	0	230	86.7	----	86.7	19950	----	19950
San Miguel	120	60	10	70	40.0	10.0	35.7	2400	100	2500
Torrance	1200	700	0	700	48.0	----	48.0	33600	----	33600
Union	30	30	0	30	45.0	----	45.0	1350	----	1350
<b>NORTHEAST DISTRICT</b>	<b>4990</b>	<b>2360</b>	<b>180</b>	<b>2540</b>	<b>60.7</b>	<b>16.1</b>	<b>57.5</b>	<b>143140</b>	<b>2900</b>	<b>146040</b>
Catron	20	0	0	0	----	----	----	----	----	----
Grant	400	120	0	120	42.0	----	42.0	5040	----	5040
Hidalgo	1100	720	0	720	68.0	----	68.0	48960	----	48960
Luna	3600	1600	0	1600	60.0	----	60.0	96000	----	96000
Sierra	300	10	0	10	44.0	----	44.0	440	----	440
Socorro	150	30	0	30	64.0	----	64.0	1920	----	1920
<b>SOUTHWEST DISTRICT</b>	<b>5570</b>	<b>2480</b>	<b>0</b>	<b>2480</b>	<b>61.4</b>	<b>----</b>	<b>61.4</b>	<b>152360</b>	<b>----</b>	<b>152360</b>
Chaves	6400	3400	0	3400	57.0	----	57.0	193800	----	193800
Dona Ana	2300	2200	0	2200	60.0	----	60.0	132000	----	132000
Eddy	2400	1600	0	1600	68.0	----	68.0	108800	----	108800
Lea	370	140	0	140	50.0	----	50.0	7000	----	7000
Lincoln	40	0	0	0	----	----	----	----	----	----
Otero	240	120	0	120	78.0	----	78.0	9360	----	9360
<b>SOUTHEAST DISTRICT</b>	<b>11750</b>	<b>7460</b>	<b>0</b>	<b>7460</b>	<b>60.4</b>	<b>----</b>	<b>60.4</b>	<b>450960</b>	<b>----</b>	<b>450960</b>
<b>STATE</b>	<b>26000</b>	<b>13600</b>	<b>400</b>	<b>14000</b>	<b>59.2</b>	<b>18.2</b>	<b>58.0</b>	<b>804700</b>	<b>7300</b>	<b>812000</b>

BARLEY: ACREAGE, YIELD AND PRODUCTION BY COUNTIES, IRRIGATED AND NON-IRRIGATED, 1970 1/

County	Acres planted all purposes	Acres harvested			Yield per harvested acre			Production		
		Irrig.	Non-Irrig.	Total	Irrig.	Non-Irrig.	Total	Irrig.	Non-Irrig.	Total
Bernalillo	400	150	50	200	44.0	20.0	38.0	6600	1000	7600
McKinley	140	10	0	10	26.0	----	26.0	260	----	260
Rio Arriba	150	50	50	100	45.0	20.0	32.5	2250	1000	3250
Sandoval	50	0	0	0	----	----	----	----	----	----
San Juan	400	100	0	100	50.0	----	50.0	5000	----	5000
Santa Fe	260	150	0	150	65.0	----	65.0	9750	----	9750
Taos	1200	850	0	850	32.0	----	32.0	27200	----	27200
Valencia	1300	300	0	300	60.0	----	60.0	18000	----	18000
<b>NORTHWEST DISTRICT</b>	<b>3900</b>	<b>1610</b>	<b>100</b>	<b>1710</b>	<b>42.9</b>	<b>20.0</b>	<b>41.6</b>	<b>69060</b>	<b>2000</b>	<b>71060</b>
Colfax	400	150	50	200	54.0	15.0	44.3	8100	750	8850
Curry	1950	670	20	690	84.0	50.0	83.0	56280	1000	57280
De Baca	270	170	0	170	48.0	----	48.0	8160	----	8160
Guadalupe	50	0	0	0	----	----	----	----	----	----
Harding	270	----	50	50	----	15.0	15.0	----	750	750
Mora	160	50	30	80	41.0	10.0	29.4	2050	300	2350
Quay	400	50	100	150	55.0	10.0	25.0	2750	1000	3750
Roosevelt	500	200	0	200	78.0	----	78.0	15600	----	15600
San Miguel	100	20	10	30	44.0	10.0	32.7	880	100	980
Torrance	1000	500	0	500	56.0	----	56.0	28000	----	28000
<b>NORTHEAST DISTRICT</b>	<b>5100</b>	<b>1810</b>	<b>260</b>	<b>2070</b>	<b>67.3</b>	<b>15.0</b>	<b>60.7</b>	<b>121820</b>	<b>3900</b>	<b>125720</b>
Catron	20	0	0	0	----	----	----	----	----	----
Grant	350	100	0	100	48.0	----	48.0	4800	----	4800
Hidalgo	800	550	0	550	58.0	----	58.0	31900	----	31900
Luna	3600	1500	0	1500	72.0	----	72.0	108000	----	108000
Sierra	300	50	0	50	46.0	----	46.0	2300	----	2300
Socorro	130	20	0	20	66.0	----	66.0	1320	----	1320
<b>SOUTHWEST DISTRICT</b>	<b>5200</b>	<b>2220</b>	<b>0</b>	<b>2220</b>	<b>66.8</b>	<b>----</b>	<b>66.8</b>	<b>148320</b>	<b>----</b>	<b>148320</b>
Chaves	9000	5500	0	5500	63.0	----	63.0	346500	----	346500
Dona Ana	2770	2600	0	2600	66.0	----	66.0	171600	----	171600
Eddy	2300	1600	0	1600	50.0	----	50.0	80000	----	80000
Lea	500	200	0	200	52.0	----	52.0	10400	----	10400
Lincoln	30	0	0	0	----	----	----	----	----	----
Otero	200	100	0	100	64.0	----	64.0	6400	----	6400
<b>SOUTHEAST DISTRICT</b>	<b>14800</b>	<b>10000</b>	<b>0</b>	<b>10000</b>	<b>61.5</b>	<b>----</b>	<b>61.5</b>	<b>614900</b>	<b>----</b>	<b>614900</b>
<b>STATE</b>	<b>29000</b>	<b>15640</b>	<b>360</b>	<b>16000</b>	<b>61.0</b>	<b>16.4</b>	<b>60.0</b>	<b>954100</b>	<b>5900</b>	<b>960000</b>

1/ Preliminary.



CORN: ACREAGE, YIELD AND PRODUCTION BY COUNTIES, IRRIGATED AND NON-IRRIGATED, 1969

County	Acres planted all purposes	Harvested for grain								
		Acres			Yield per acre			Production		
		Irrig.	Non-Irrig.	Total	Irrig.	Non-Irrig.	Total	Irrig.	Non-Irrig.	Total
Acres	Acres	Acres	Acres	Bushels	Bushels	Bushels	Bushels	Bushels	Bushels	
Bernalillo	1200	100	0	100	27.0	----	27.0	2700	----	2700
McKinley	3400	800	300	1100	32.0	15.0	27.4	25600	4500	30100
Rio Arriba	500	400	0	400	32.0	----	32.0	12800	----	12800
Sandoval	1500	1000	0	1000	42.0	----	42.0	42000	----	42000
San Juan	6300	2500	200	2700	72.0	13.0	67.6	180000	2600	182600
Santa Fe	2500	800	50	850	92.0	13.0	87.4	73600	650	74250
Taos	500	400	0	400	38.0	----	38.0	15200	----	15200
Valencia	2800	500	500	1000	52.0	13.0	32.5	26000	6500	32500
<b>NORTHWEST DISTRICT</b>	<b>18700</b>	<b>6500</b>	<b>1050</b>	<b>7550</b>	<b>58.1</b>	<b>13.6</b>	<b>51.9</b>	<b>377900</b>	<b>14250</b>	<b>392150</b>
Colfax	2300	170	180	350	72.0	17.0	43.7	12240	3060	15300
Curry	3400	430	20	450	85.0	10.0	81.7	36550	200	36750
De Baca	50	30	0	30	72.0	----	72.0	2160	----	2160
Cuadalupe	250	190	10	200	60.0	15.0	57.8	11400	150	11550
Harding	100	50	0	50	40.0	----	40.0	2000	----	2000
Mora	220	10	80	90	44.0	18.0	20.9	440	1440	1880
Quay	2000	0	50	50	----	8.0	8.0	----	400	400
Roosevelt	1300	400	0	400	80.0	----	80.0	32000	----	32000
San Miguel	450	190	160	350	44.0	15.0	30.7	8360	2400	10760
Torrance	5000	1700	400	2100	64.0	15.0	54.7	108800	6000	114800
Union	4200	2150	150	2300	87.0	14.0	82.2	187050	2100	189150
<b>NORTHEAST DISTRICT</b>	<b>19270</b>	<b>5320</b>	<b>1050</b>	<b>6370</b>	<b>75.4</b>	<b>15.0</b>	<b>65.4</b>	<b>401000</b>	<b>15750</b>	<b>416750</b>
Catron	40	20	0	20	59.0	----	59.0	1180	----	1180
Grant	420	100	0	100	76.0	----	76.0	7600	----	7600
Hidalgo	300	200	0	200	97.0	----	97.0	19400	----	19400
Luna	1700	1300	0	1300	95.0	----	95.0	123500	----	123500
Sierra	670	100	0	100	55.0	----	55.0	5500	----	5500
Socorro	1000	320	0	320	77.0	----	77.0	24640	----	24640
<b>SOUTHWEST DISTRICT</b>	<b>4130</b>	<b>2040</b>	<b>0</b>	<b>2040</b>	<b>89.1</b>	<b>----</b>	<b>89.1</b>	<b>181820</b>	<b>----</b>	<b>181820</b>
Chaves	5600	500	0	500	70.0	----	70.0	35000	----	35000
Dona Ana	1500	200	0	200	47.0	----	47.0	9400	----	9400
Eddy	1350	50	0	50	57.0	----	57.0	2850	----	2850
Lea	900	150	0	150	42.0	----	42.0	6300	----	6300
Lincoln	100	70	0	70	67.0	----	67.0	4690	----	4690
Otero	450	70	0	70	72.0	----	72.0	5040	----	5040
<b>SOUTHEAST DISTRICT</b>	<b>9900</b>	<b>1040</b>	<b>0</b>	<b>1040</b>	<b>60.8</b>	<b>----</b>	<b>60.8</b>	<b>63280</b>	<b>----</b>	<b>63280</b>
<b>STATE</b>	<b>52000</b>	<b>14900</b>	<b>2100</b>	<b>17000</b>	<b>68.7</b>	<b>14.3</b>	<b>62.0</b>	<b>1024000</b>	<b>30000</b>	<b>1054000</b>

CORN: ACREAGE, YIELD, AND PRODUCTION BY COUNTIES, IRRIGATED AND NON-IRRIGATED, 1970 1/

County	Acres planted all purposes	Harvested for grain								
		Acres			Yield per acre			Production		
		Irrig.	Non-Irrig.	Total	Irrig.	Non-Irrig.	Total	Irrig.	Non-Irrig.	Total
Acres	Acres	Acres	Acres	Bushels	Bushels	Bushels	Bushels	Bushels	Bushels	
Bernalillo	670	100	0	100	30.0	----	30.0	3000	----	3000
McKinley	3200	900	400	1300	30.0	14.0	25.1	27000	5600	32600
Rio Arriba	460	300	0	300	30.0	----	30.0	9000	----	9000
Sandoval	1000	700	0	700	40.0	----	40.0	28000	----	28000
San Juan	6500	2700	300	3000	60.0	15.0	55.5	162000	4500	166500
Santa Fe	2300	750	0	750	80.0	----	80.0	60000	----	60000
Taos	650	250	0	250	40.0	----	40.0	10000	----	10000
Valencia	1700	400	300	700	45.0	16.0	32.6	18000	4800	22800
<b>NORTHWEST DISTRICT</b>	<b>16480</b>	<b>6100</b>	<b>1000</b>	<b>7100</b>	<b>52.0</b>	<b>14.9</b>	<b>46.7</b>	<b>317000</b>	<b>14900</b>	<b>331900</b>
Colfax	2100	400	100	500	65.0	20.0	56.0	26000	2000	28000
Curry	2500	300	0	300	80.0	----	80.0	24000	----	24000
De Baca	70	40	0	40	65.0	----	65.0	2600	----	2600
Cuadalupe	250	150	50	200	60.0	16.0	49.0	9000	800	9800
Harding	300	160	0	160	45.0	----	45.0	7200	----	7200
Mora	250	10	10	20	55.0	15.0	35.0	550	150	700
Quay	1300	0	0	0	----	----	----	----	----	----
Roosevelt	1200	400	0	400	85.0	----	85.0	34000	----	34000
San Miguel	330	150	50	200	45.0	16.0	37.8	6750	800	7550
Torrance	4500	1600	450	2050	70.0	15.0	57.9	112000	6750	118750
Union	3900	2700	0	2700	95.0	----	95.0	256500	----	256500
<b>NORTHEAST DISTRICT</b>	<b>16700</b>	<b>5910</b>	<b>660</b>	<b>6570</b>	<b>81.0</b>	<b>15.9</b>	<b>74.4</b>	<b>478600</b>	<b>10500</b>	<b>489100</b>
Catron	70	20	0	20	55.0	----	55.0	1100	----	1100
Grant	400	150	0	150	80.0	----	80.0	12000	----	12000
Hidalgo	100	50	0	50	90.0	----	90.0	4500	----	4500
Luna	1500	1340	0	1340	90.0	----	90.0	120600	----	120600
Sierra	500	150	0	150	50.0	----	50.0	7500	----	7500
Socorro	1000	500	0	500	75.0	----	75.0	37500	----	37500
<b>SOUTHWEST DISTRICT</b>	<b>3570</b>	<b>2210</b>	<b>0</b>	<b>2210</b>	<b>82.9</b>	<b>----</b>	<b>82.9</b>	<b>183200</b>	<b>----</b>	<b>183200</b>
Chaves	6000	600	0	600	65.0	----	65.0	39000	----	39000
Dona Ana	2000	300	0	300	50.0	----	50.0	15000	----	15000
Eddy	1350	50	0	50	55.0	----	55.0	2750	----	2750
Lea	600	50	0	50	40.0	----	40.0	2000	----	2000
Lincoln	100	70	0	70	65.0	----	65.0	4550	----	4550
Otero	200	50	0	50	70.0	----	70.0	3500	----	3500
<b>SOUTHEAST DISTRICT</b>	<b>10250</b>	<b>1120</b>	<b>0</b>	<b>1120</b>	<b>59.6</b>	<b>----</b>	<b>59.6</b>	<b>66800</b>	<b>----</b>	<b>66800</b>
<b>STATE</b>	<b>47000</b>	<b>15340</b>	<b>1660</b>	<b>17000</b>	<b>68.2</b>	<b>15.3</b>	<b>63.0</b>	<b>1045600</b>	<b>25400</b>	<b>1071000</b>

1/ Preliminary.

ALL SORGHUMS: ACREAGE, YIELD AND PRODUCTION BY COUNTIES, IRRIGATED AND NON-IRRIGATED, 1969

County	Acres planted all purposes			Acres			Harvested for grain Yield per acre			Production		
	Irrig.	Non-Irrig.	Total	Irrig.	Non-Irrig.	Total	Irrig.	Non-Irrig.	Total	Irrig.	Non-Irrig.	Total
Bernalillo	250	150	400	200	50	250	70.0	18.0	59.6	14000	900	14900
McKinley	150	0	150	50	0	50	40.0	----	40.0	2000	----	2000
Rio Arriba	50	0	50	0	0	0	----	----	----	----	----	----
Sandoval	100	0	100	0	0	0	----	----	----	----	----	----
San Juan	400	50	450	300	0	300	40.0	----	40.0	12000	----	12000
Santa Fe	200	0	200	0	0	0	----	----	----	----	----	----
Taos	50	0	50	0	0	0	----	----	----	----	----	----
Valencia	600	0	600	100	0	100	53.0	----	53.0	5300	----	5300
NORTHWEST DISTRICT	1800	200	2000	650	50	700	51.2	18.0	48.9	33300	900	34200
Colfax	200	1200	1400	50	50	100	45.0	15.0	30.0	2250	750	3000
Curry	55000	60000	115000	54000	38000	92000	101.0	16.5	66.1	5454000	627000	6081000
De Baca	1600	0	1600	500	0	500	100.0	----	100.0	50000	----	50000
Guadalupe	200	50	250	50	0	50	50.0	----	50.0	2500	----	2500
Harding	400	950	1350	300	500	800	50.0	14.0	27.5	15000	7000	22000
Mora	0	400	400	0	0	0	----	----	----	----	----	----
Quay	9100	32900	42000	8000	13100	21100	76.8	20.6	41.9	614400	269850	884250
Roosevelt	32000	63000	95000	31000	52000	83000	58.0	18.9	33.5	1798000	982800	2780800
San Miguel	300	400	700	150	100	250	45.0	15.0	32.8	6750	1500	8250
Torrance	500	1000	1500	150	50	200	51.0	14.0	42.0	7650	700	8350
Union	15000	25000	40000	11000	15000	26000	89.0	19.5	48.9	979000	292500	1271500
NORTHEAST DISTRICT	114300	184900	299200	105200	118800	224000	84.9	18.4	49.6	8929550	2182100	11111650
Catron	50	0	50	0	0	0	----	----	----	----	----	----
Grant	1550	0	1550	1500	0	1500	86.0	----	86.0	129000	----	129000
Hidalgo	13500	0	13500	13000	0	13000	75.0	----	75.0	975000	----	975000
Luna	25000	0	25000	24000	0	24000	93.0	----	93.0	2232000	----	2232000
Sierra	100	0	100	60	0	60	70.0	----	70.0	4200	----	4200
Socorro	700	0	700	370	0	370	95.0	----	95.1	35150	----	35150
SOUTHWEST DISTRICT	40900	0	40900	38930	0	38930	86.7	----	86.7	3375350	----	3375350
Chaves	13500	0	13500	4000	0	4000	73.0	----	73.0	292000	----	292000
Dona Ana	3500	0	3500	2900	0	2900	62.0	----	62.0	179800	----	179800
Eddy	3300	0	3300	1900	0	1900	94.0	----	94.0	178600	----	178600
Lea	30000	4000	34000	25450	2050	27500	62.0	20.0	58.9	1577900	41000	1618900
Lincoln	100	0	100	70	0	70	50.0	----	50.0	3500	----	3500
Otero	1500	0	1500	1000	0	1000	62.0	----	62.0	62000	----	62000
SOUTHEAST DISTRICT	51900	4000	55900	35320	2050	37370	64.9	20.0	62.5	2293800	41000	2334800
STATE	208900	189100	398000	180100	120900	301000	81.2	18.4	56.0	14632000	2224000	16856000

ALL SORGHUMS: ACREAGE, YIELD, AND PRODUCTION BY COUNTIES, IRRIGATED AND NON-IRRIGATED 1970 1/

County	Acres planted all purposes			Acres			Harvested for grain Yield per acre			Production		
	Irrig.	Non-Irrig.	Total	Irrig.	Non-Irrig.	Total	Irrig.	Non-Irrig.	Total	Irrig.	Non-Irrig.	Total
Bernalillo	200	150	350	100	50	150	64.0	15.0	47.7	6400	750	7150
McKinley	150	0	150	50	0	50	40.0	----	40.0	2000	----	2000
Rio Arriba	50	0	50	0	0	0	----	----	----	----	----	----
Sandoval	100	0	100	0	0	0	----	----	----	----	----	----
San Juan	450	50	500	300	0	300	40.0	----	40.0	12000	----	12000
Santa Fe	200	0	200	0	0	0	----	----	----	----	----	----
Taos	50	0	50	0	0	0	----	----	----	----	----	----
Valencia	700	0	700	200	0	200	54.0	----	54.0	10800	----	10800
NORTHWEST DISTRICT	1900	200	2100	650	50	700	48.0	15.0	45.6	31200	750	31950
Colfax	200	0	200	50	0	50	45.0	----	45.0	2250	----	2250
Curry	65000	55000	120000	59000	35000	94000	104.0	15.0	70.9	6136000	525000	6661000
De Baca	1350	0	1350	1000	0	1000	84.0	----	84.0	84000	----	84000
Guadalupe	150	50	200	50	0	50	49.0	----	49.0	2450	----	2450
Harding	500	1000	1500	450	650	1100	50.0	14.0	28.7	22500	9100	31600
Mora	0	350	350	0	0	0	----	----	----	----	----	----
Quay	9500	35500	45000	8000	16000	24000	72.0	20.0	37.3	576000	320000	896000
Roosevelt	35000	65000	100000	30000	58000	88000	75.0	17.0	36.8	2250000	986000	3236000
San Miguel	300	400	700	200	150	350	45.0	15.0	32.1	9000	2250	11250
Torrance	500	1000	1500	150	100	250	50.0	14.0	35.6	7500	1400	8900
Union	20700	16600	37300	12100	8000	20100	70.0	17.0	48.9	847000	136000	983000
NORTHEAST DISTRICT	133200	174900	308100	111000	117900	228900	89.5	16.8	52.1	9936700	1979750	11916450
Catron	100	0	100	0	0	0	----	----	----	----	----	----
Grant	1600	0	1600	1550	0	1550	78.0	----	78.0	120900	----	120900
Hidalgo	14000	0	14000	13000	0	13000	75.0	----	75.0	975000	----	975000
Luna	25000	0	25000	23000	0	23000	90.0	----	90.0	2070000	----	2070000
Sierra	200	0	200	50	0	50	65.0	----	65.0	3250	----	3250
Socorro	700	0	700	400	0	400	85.0	----	85.0	34000	----	34000
SOUTHWEST DISTRICT	41600	0	41600	38000	0	38000	84.3	----	84.3	3203150	----	3203150
Chaves	14000	0	14000	6000	0	6000	70.0	----	70.0	420000	----	420000
Dona Ana	4100	0	4100	3300	0	3300	60.0	----	60.0	198000	----	198000
Eddy	3500	0	3500	2500	0	2500	55.0	----	55.0	137500	----	137500
Lea	30000	4000	34000	24450	1550	26000	60.0	20.0	57.6	1467000	31000	1498000
Lincoln	70	0	70	50	0	50	50.0	----	50.0	2500	----	2500
Otero	2530	0	2530	1550	0	1550	59.0	----	59.0	91450	----	91450
SOUTHEAST DISTRICT	54200	4000	58200	37850	1550	39400	61.2	20.0	59.6	2316450	31000	2347450
STATE	230900	179100	410000	187500	119500	307000	82.6	16.8	57.0	15487500	2011500	17499000

1/ Preliminary.

WINTER WHEAT: ACREAGE, YIELD, AND PRODUCTION BY COUNTIES, IRRIGATED AND NON-IRRIGATED, 1969 1/

County	Acres planted			Acres harvested			Yield per harvested acre			Production		
	Irrig.	Non-Irrig.	Total	Irrig.	Non-Irrig.	Total	Irrig.	Non-Irrig.	Total	Irrig.	Non-Irrig.	Total
	Acres	Acres	Acres	Acres	Acres	Acres	Bushels	Bushels	Bushels	Bushels	Bushels	Bushels
Bernalillo	400	300	700	30	120	150	35.0	20.0	23.0	1050	2400	3450
McKinley	100	200	300	70	130	200	30.0	15.0	20.3	2100	1950	4050
Rio Arriba	100	3300	3400	0	3300	3300	----	13.0	13.0	----	42900	42900
Sandoval	40	110	150	40	110	150	35.0	13.0	18.9	1400	1430	2830
San Juan	250	50	300	200	0	200	30.0	----	30.0	6000	----	6000
Santa Fe	330	770	1100	250	750	1000	38.0	23.2	26.9	9500	17400	26900
Taos	800	100	900	780	70	850	25.0	13.0	24.0	19500	910	20410
Valencia	1120	830	1950	80	320	400	29.0	15.0	17.8	2320	4800	7120
NORTHWEST DISTRICT	3140	5660	8800	1450	4800	6250	28.9	15.0	18.2	41870	71790	113660
Colfax	760	2440	3200	530	1520	2050	45.0	12.0	20.5	23850	18240	42090
Curry	55000	86000	141000	40000	43000	83000	50.0	15.3	32.0	2000000	657900	2657900
De Baca	340	60	400	70	80	150	45.0	16.5	29.8	3150	1320	4470
Guadalupe	100	0	100	0	0	0	----	----	----	----	----	----
Harding	200	5800	6000	50	2450	2500	40.0	16.0	16.5	2000	39200	41200
Mora	100	500	600	50	300	350	30.0	11.0	13.7	1500	3300	4800
Quay	7000	64500	71500	5000	34000	39000	46.0	15.5	19.4	230000	527000	757000
Roosevelt	8300	36700	45000	5000	15000	20000	47.0	13.0	21.5	235000	195000	430000
San Miguel	600	200	800	150	0	150	39.0	----	39.0	5850	----	5850
Torrance	1100	900	2000	1050	550	1600	45.0	11.0	33.3	47250	6050	53300
Union	2200	800	3000	1000	300	1300	44.0	10.0	36.2	44000	3000	47000
NORTHEAST DISTRICT	75700	197900	273600	52900	97200	150100	49.0	14.9	26.9	2592600	1451010	4043610
Catron	20	20	40	20	0	20	39.0	----	39.0	780	----	780
Grant	800	300	1100	70	0	70	37.0	----	37.0	2590	----	2590
Hidalgo	1530	0	1530	800	0	800	65.0	----	65.0	52000	----	52000
Luna	1630	0	1630	1360	0	1360	45.0	----	45.0	61200	----	61200
Sierra	20	0	20	0	0	0	----	----	----	----	----	----
Socorro	350	0	350	50	0	50	40.0	----	40.0	2000	----	2000
SOUTHWEST DISTRICT	4350	320	4670	2300	0	2300	51.6	----	51.6	118570	----	118570
Chaves	400	0	400	100	0	100	40.0	----	40.0	4000	----	4000
Dona Ana	80	0	80	80	0	80	58.0	----	58.0	4640	----	4640
Eddy	100	0	100	20	0	20	36.0	----	36.0	720	----	720
Lea	30	120	150	0	0	0	----	----	----	----	----	----
Lincoln	50	0	50	0	0	0	----	----	----	----	----	----
Otero	150	0	150	150	0	150	52.0	----	52.0	7800	----	7800
SOUTHEAST DISTRICT	810	120	930	350	0	350	49.0	----	49.0	17160	----	17160
STATE	84000	204000	288000	57000	102000	159000	48.6	14.9	27.0	2770200	1522800	4293000

1/ Revised.

WINTER WHEAT: ACREAGE, YIELD, AND PRODUCTION BY COUNTIES, IRRIGATED AND NON-IRRIGATED, 1970 1/

County	Acres planted			Acres harvested			Yield per harvested acre			Production		
	Irrig.	Non-Irrig.	Total	Irrig.	Non-Irrig.	Total	Irrig.	Non-Irrig.	Total	Irrig.	Non-Irrig.	Total
	Acres	Acres	Acres	Acres	Acres	Acres	Bushels	Bushels	Bushels	Bushels	Bushels	Bushels
Bernalillo	350	300	650	50	100	150	35.0	21.0	25.7	1750	2100	3850
McKinley	100	200	300	80	150	230	31.0	15.0	20.6	2480	2250	4730
Rio Arriba	100	3200	3300	0	3100	3100	----	15.0	15.0	----	46500	46500
Sandoval	50	80	130	20	60	80	40.0	17.5	23.1	800	1050	1850
San Juan	250	50	300	200	0	200	40.0	----	40.0	8000	----	8000
Santa Fe	320	1180	1500	200	800	1000	45.0	25.0	29.0	9000	20000	29000
Taos	800	100	900	700	50	750	33.0	20.0	32.1	23100	1000	24100
Valencia	1000	700	1700	100	260	360	40.0	15.0	21.9	4000	3900	7900
NORTHWEST DISTRICT	2970	5810	8780	1350	4520	5870	36.4	17.0	21.5	49130	76800	125930
Colfax	800	2500	3300	500	1600	2100	45.0	15.0	22.1	22500	24000	46500
Curry	56000	88000	144000	41300	49000	90300	57.0	18.5	36.1	2354100	906500	3260600
De Baca	500	100	600	80	80	160	50.0	20.0	35.0	4000	1600	5600
Guadalupe	100	0	100	0	0	0	----	----	----	----	----	----
Harding	200	5800	6000	100	3400	3500	35.0	16.0	16.5	3500	54400	57900
Mora	100	500	600	50	250	300	30.0	12.0	15.0	1500	3000	4500
Quay	7000	67000	74000	4400	41200	45600	46.0	21.0	23.4	202400	865200	1067600
Roosevelt	9000	38000	47000	6000	26000	32000	52.0	18.0	24.4	312000	468000	780000
San Miguel	600	200	800	300	0	300	39.0	----	39.0	11700	----	11700
Torrance	1000	800	1800	830	450	1280	45.0	10.0	32.7	37350	4500	41850
Union	4700	1100	5800	400	500	900	50.0	20.0	33.3	20000	10000	30000
NORTHEAST DISTRICT	80000	204000	284000	53960	122480	176440	55.0	19.1	30.1	2969050	2337200	5306250
Catron	20	20	40	20	0	20	39.0	----	39.0	780	----	780
Grant	860	340	1200	100	0	100	38.0	----	38.0	3800	----	3800
Hidalgo	1400	0	1400	800	0	800	61.0	----	61.0	48800	----	48800
Luna	400	0	400	350	0	350	41.0	----	41.0	14350	----	14350
Sierra	20	0	20	20	0	20	40.0	----	40.0	800	----	800
Socorro	340	0	340	50	0	50	45.0	----	45.0	2250	----	2250
SOUTHWEST DISTRICT	3040	360	3400	1340	0	1340	52.8	----	52.8	70780	----	70780
Chaves	350	0	350	100	0	100	41.0	----	41.0	4100	----	4100
Dona Ana	80	0	80	80	0	80	58.0	----	58.0	4640	----	4640
Eddy	100	0	100	20	0	20	40.0	----	40.0	800	----	800
Lea	30	30	60	0	0	0	----	----	----	----	----	----
Lincoln	50	0	50	0	0	0	----	----	----	----	----	----
Otero	180	0	180	150	0	150	50.0	----	50.0	7500	----	7500
SOUTHEAST DISTRICT	790	30	820	350	0	350	48.7	----	48.7	17040	----	17040
STATE	86800	210200	297000	57000	127000	184000	54.5	19.0	30.0	3106000	2414000	5520000

1/ Preliminary

New Mexico Agricultural Statistics

ALL HAY: ACREAGE, YIELD, AND PRODUCTION BY COUNTIES, 1969 and 1970

County	1969			1970 1/		
	Acres harvested	Yield per acre	Production	Acres harvested	Yield per acre	Production
	Acres	Tons	Tons	Acres	Tons	Tons
Bernalillo	6600	3.5	23140	6600	3.5	23200
McKinley	2400	1.7	4120	2700	1.6	4280
Rio Arriba	11600	1.6	18850	11500	2.0	23430
Sandoval	7000	2.7	18630	6900	2.2	15420
San Juan	15200	3.6	54850	15800	3.0	47210
Santa Fe	7500	2.0	14830	7700	2.4	18240
Taos	11400	1.8	21060	11500	1.8	20360
Valencia	18000	4.0	72780	17900	3.7	66550
NORTHWEST DISTRICT	79700	2.86	228260	80600	2.71	218690
Colfax	17000	2.3	39550	19000	2.2	41460
Curry	5200	3.3	16970	5400	3.2	17200
De Baca	4800	3.7	17850	5000	3.8	19160
Guadalupe	3200	1.7	5320	3500	1.7	5840
Harding	5600	2.0	11000	5800	2.2	12690
Mora	11400	1.8	20120	11800	1.5	18050
Quay	9500	3.6	33780	9700	3.9	37880
Roosevelt	6000	3.4	20540	6200	3.7	22980
San Miguel	4800	1.8	8520	5000	1.7	8550
Torrance	6400	3.8	24220	6700	3.7	24890
Union	9400	2.2	21080	9700	2.5	24340
NORTHEAST DISTRICT	83300	2.63	218950	87800	2.65	233040
Catron	600	2.3	1370	600	1.9	1140
Grant	3100	2.3	7160	3200	2.0	6450
Hidalgo	2600	3.5	9020	2800	3.1	8800
Luna	2300	3.1	7170	2200	3.4	7380
Sierra	2200	2.7	5950	2400	2.7	6540
Socorro	9600	4.0	38220	9400	3.5	32820
SOUTHWEST DISTRICT	20400	3.38	68890	20600	3.06	63130
Chaves	41200	5.7	236220	41500	5.2	216650
Dona Ana	19400	4.2	81830	19500	4.3	84030
Eddy	31000	5.4	166540	31300	4.9	154810
Lea	13400	3.5	47510	13700	4.2	57520
Lincoln	1700	2.4	4040	2000	2.4	4770
Otero	2900	3.7	10760	3000	3.8	11360
SOUTHEAST DISTRICT	109600	4.99	546900	111000	4.77	529140
STATE	293000	3.63	1063000	300000	3.48	1044000

1/ Preliminary.

New Mexico Agricultural Statistics

ALFALFA HAY: ACREAGE, YIELD, AND PRODUCTION BY COUNTIES, PRACTICALLY ALL IRRIGATED, 1969 and 1970

County	1969			1970 1/		
	Acres harvested	Yield per acre	Production	Acres harvested	Yield per acre	Production
	Acres	Tons	Tons	Acres	Tons	Tons
Bernalillo	5800	3.8	22040	5400	4.0	21600
McKinley	800	2.4	1920	1000	2.0	2000
Rio Arriba	5500	1.9	10450	5900	2.7	15930
Sandoval	5900	2.9	17110	4900	2.6	12740
San Juan	14000	3.8	53200	14000	3.2	44800
Santa Fe	4000	2.5	10000	4500	3.1	13950
Taos	7400	2.1	15540	7500	2.0	15000
Valencia	17000	4.2	71400	16000	4.0	64000
NORTHWEST DISTRICT	60400	3.34	201660	59200	3.21	190020
Colfax	10000	3.0	30000	11100	2.8	31080
Curry	2500	5.3	13250	2800	4.9	13720
De Baca	3100	5.0	15500	3600	4.8	17280
Guadalupe	1100	2.2	2420	1200	2.3	2760
Harding	1800	3.2	5760	2000	3.8	7600
Mora	4300	2.4	10320	4000	1.9	7600
Quay	7600	4.1	31160	8700	4.2	36540
Roosevelt	4200	4.3	18060	4500	4.6	20700
San Miguel	2700	2.1	5620	2800	2.0	5600
Torrance	4500	4.8	21600	4600	4.8	22080
Union	2600	4.5	11700	3100	5.0	15500
NORTHEAST DISTRICT	44400	3.73	165390	48400	3.73	180460
Catron	300	3.2	960	200	3.0	600
Grant	1100	4.0	4400	1000	3.5	3500
Hidalgo	1500	5.0	7500	1550	4.6	7130
Luna	1800	3.6	6480	1800	3.8	6840
Sierra	1600	3.2	5120	2000	3.0	6000
Socorro	6900	5.0	34500	6400	4.5	28800
SOUTHWEST DISTRICT	13200	4.47	58960	12950	4.08	52870
Chaves	38000	6.1	231800	39000	5.5	213300
Dona Ana	14800	5.1	75480	15000	5.2	78000
Eddy	28000	5.8	162400	28500	5.3	151060
Lea	9300	4.5	41850	10700	5.0	53500
Lincoln	800	3.5	2800	850	3.8	3230
Otero	2100	4.6	9660	2400	4.4	10560
SOUTHEAST DISTRICT	93000	5.63	523990	96450	5.28	509650
STATE	211000	4.50	950000	217000	4.30	933000

ALFALFA SEED: ACREAGE, YIELD, AND PRODUCTION BY COUNTIES, ALL IRRIGATED, 1969 and 1970

County	1969			1970 1/		
	Acres harvested	Yield per acre	Production	Acres harvested	Yield per acre	Production
	Acres	Pounds	Pounds	Acres	Pounds	Pounds
NORTHEAST DISTRICT	60	150	9000	100	150	15000
SOUTHWEST DISTRICT	0	0	0	50	180	9000
Chaves	1400	175	245000	1000	205	204500
Dona Ana	900	190	171000	600	210	126000
Eddy	1140	180	205000	800	195	156000
Lea	0	0	0	50	190	9500
SOUTHEAST DISTRICT	3440	181	621000	2450	202	496000
STATE	3500	180	630000	2600	200	520000

1/ Preliminary.

New Mexico Agricultural Statistics

BROOMCORN: ACREAGE, YIELD, AND PRODUCTION, BY COUNTIES, IRRIGATED AND NON-IRRIGATED, 1969

County	Acres Planted		Acres harvested		Yield per harvested acre		Production	
	Acres	Irrig.	Acres	Non-Irrig.	Irrig.	Non-Irrig.	Irrig.	Non-Irrig.
Curry	600	50	450	500	600	280	15	63
Barding	1100	50	950	1000	480	280	12	133
Quay	8360	400	7100	7300	500	260	100	923
Roosevelt	13360	2900	13600	16300	500	258	725	1754
Union	580	50	450	500	480	280	12	63
NORTHEAST DISTRICT	29000	3450	22550	26000	500	260	864	2936
STATE	29000	3450	22550	26000	500	260	864	2936

BROOMCORN: ACREAGE, YIELD, AND PRODUCTION, BY COUNTIES, IRRIGATED AND NON-IRRIGATED, 1970 1/

County	Acres Planted		Acres harvested		Yield per harvested acre		Production	
	Acres	Irrig.	Acres	Non-Irrig.	Irrig.	Non-Irrig.	Irrig.	Non-Irrig.
Curry	600	100	300	400	600	260	30	39
Quay	8400	450	6050	6500	480	240	108	726
Roosevelt	16000	2800	10300	13100	500	232	700	1197
NORTHEAST DISTRICT	25000	3350	16650	20000	500	236	838	1962
STATE	25000	3350	16650	20000	500	236	838	1962

1/ Preliminary.

New Mexico Agricultural Statistics

POTATOES: ACREAGE, YIELD AND PRODUCTION, BY COUNTIES, ALL IRRIGATED, 1969 and 1970

County	1969				1970			
	Acres		Yield per	Production	Acres		Yield per	Production
	Planted	Harvested	harvested acre		Planted	Harvested	harvested acre	
San Juan	400	350	90	31500	200	150	120	18000
Santa Fe	325	305	190	57950	390	350	240	84000
Other Counties	75	75	165	12350	110	100	148	14800
NORTHWEST DISTRICT	800	730	139	101800	700	600	195	116800
Curry	500	480	190	91200	230	220	230	50600
Torrance	1680	1480	165	244200	1270	1200	220	264000
Other Counties	220	210	194	40800	500	480	299	143600
NORTHEAST DISTRICT	2400	2170	173	376200	2000	1900	241	458200
STATE	3200	2900	165	478000	2700	2500	230	575000

SWEETPOTATOES: ACREAGE, YIELD AND PRODUCTION, BY COUNTIES, ALL IRRIGATED, 1969 and 1970

County	1969				1970			
	Acres		Yield per	Production	Acres		Yield per	Production
	Planted	Harvested	harvested acre		Planted	Harvested	harvested acre	
Roosevelt	370	320	95	30400	340	325	90	29250
All Other Areas	30	30	95	2850	0	0	---	---
STATE	400	350	95	33250	340	325	90	29250

PEANUTS PICKED AND THRESHED: ACREAGE, YIELD AND PRODUCTION BY COUNTIES, ALL IRRIGATED, 1969 and 1970

County	1969			1970		
	Acres	Yield	Production	Acres	Yield	Production
	harvested	per acre		harvested	per acre	
Curry	30	2247	67400	35	2700	94500
Quay	70	1063	74400	75	1250	93750
Roosevelt	7420	2307	17118900	7895	2249	17752000
NORTHEAST DISTRICT	7520	2295	17260700	8005	2241	17940250
Luna	---	---	---	15	1450	21750
SOUTHWEST DISTRICT	---	---	---	15	1450	21750
Lea	180	1213	218300	180	1800	324000
SOUTHEAST DISTRICT	180	1213	218300	180	1800	324000
STATE	7700	2270	17479000	8200	2230	18286000

ALL DRY BEANS: ACREAGE, YIELD, AND PRODUCTION, BY COUNTIES, IRRIGATED AND NON-IRRIGATED, 1969 1/

County	Acres planted		Acres harvested			Yield per harvested acre			Production		
	All Purposes	Irrig.	Non-Irrig.	Total	Irrig.	Non-Irrig.	Total	Irrig.	Non-Irrig.	Total	
	Acres	Acres	Acres	Acres	Pounds	Pounds	Pounds	100 pound bags			
Bernalillo	100	20	60	80	300	290	290	60	174	234	
McKinley	1400	0	1000	1000	---	300	300	---	3000	3000	
Rio Arriba	10	0	10	10	---	200	200	---	20	20	
San Juan	150	130	0	130	700	---	700	910	---	910	
Santa Fe	100	0	100	100	---	220	220	---	220	220	
Taos	60	50	0	50	500	---	500	250	---	250	
Valencia	20	20	0	20	650	---	650	130	---	130	
<b>NORTHWEST DISTRICT</b>	<b>1840</b>	<b>220</b>	<b>1170</b>	<b>1390</b>	<b>610</b>	<b>292</b>	<b>343</b>	<b>1350</b>	<b>3414</b>	<b>4764</b>	
Colfax	100	20	60	80	400	200	250	80	120	200	
Curry	80	80	0	80	1000	---	1000	800	---	800	
Guadalupe	60	40	20	60	800	500	700	320	100	420	
Harding	200	0	190	190	---	200	200	---	380	380	
Mora	50	10	40	50	500	220	276	50	88	138	
Roosevelt	470	40	360	400	900	300	360	360	1080	1440	
San Miguel	100	30	50	80	550	200	331	165	100	265	
Torrance	1300	600	600	1200	780	250	517	4700	1500	6200	
Union	220	20	180	200	650	210	254	130	378	508	
<b>NORTHEAST DISTRICT</b>	<b>2580</b>	<b>840</b>	<b>1500</b>	<b>2340</b>	<b>786</b>	<b>250</b>	<b>408</b>	<b>6605</b>	<b>3746</b>	<b>10351</b>	
Hidalgo	500	500	0	500	910	---	910	4550	---	4550	
Luna	500	500	0	500	930	---	930	4650	---	4650	
Sierra	20	20	0	20	800	---	800	160	---	160	
Socorro	40	40	0	40	700	---	700	280	---	280	
<b>SOUTHWEST DISTRICT</b>	<b>1060</b>	<b>1060</b>	<b>0</b>	<b>1060</b>	<b>909</b>	<b>---</b>	<b>909</b>	<b>9640</b>	<b>---</b>	<b>9640</b>	
Chaves	460	150	0	150	1100	---	1100	1650	---	1650	
Dona Ana	40	40	0	40	1000	---	1000	400	---	400	
Eddy	10	10	0	10	1200	---	1200	120	---	120	
Lincoln	10	10	0	10	750	---	750	75	---	75	
<b>SOUTHEAST DISTRICT</b>	<b>520</b>	<b>210</b>	<b>0</b>	<b>210</b>	<b>1069</b>	<b>---</b>	<b>1069</b>	<b>2245</b>	<b>---</b>	<b>2245</b>	
<b>STATE</b>	<b>6000</b>	<b>2330</b>	<b>2670</b>	<b>5000</b>	<b>852</b>	<b>268</b>	<b>530</b>	<b>19840</b>	<b>7160</b>	<b>27000</b>	

1/ Revised.

ALL DRY BEANS: ACREAGE, YIELD, AND PRODUCTION BY COUNTIES, IRRIGATED AND NON-IRRIGATED, 1970 1/

County	Acres planted all purposes	Acres harvested			Yield per harvested acre			Production		
		Irrig.	Non-Irrig.	Total	Irrig.	Non-Irrig.	Total	Irrig.	Non-Irrig.	Total
		Acres	Acres	Acres	Acres	Pounds	Pounds	Pounds	100 pound bags	
Bernalillo	100	20	60	80	550	300	363	110	180	290
McKinley	800	0	540	540	---	300	300	---	1620	1620
Rio Arriba	10	0	10	10	---	250	250	---	25	25
San Juan	100	100	0	100	550	---	550	550	---	550
Santa Fe	100	0	80	80	---	280	280	---	224	224
Taos	50	50	0	50	900	---	900	450	---	450
Valencia	30	30	0	30	700	---	700	210	---	210
<b>NORTHWEST DISTRICT</b>	<b>1190</b>	<b>200</b>	<b>690</b>	<b>890</b>	<b>660</b>	<b>297</b>	<b>379</b>	<b>1320</b>	<b>2049</b>	<b>3369</b>
Colfax	100	20	60	80	450	200	263	90	120	210
Curry	60	60	0	60	1050	---	1050	630	---	630
Guadalupe	70	45	15	60	800	200	650	360	30	390
Harding	200	0	160	160	---	200	200	---	320	320
Mora	110	10	80	90	450	200	228	45	160	205
Quay	400	0	300	300	---	300	300	---	900	900
Roosevelt	470	50	300	350	950	280	376	475	840	1315
San Miguel	120	35	65	100	600	200	340	210	130	340
Torrance	950	450	300	750	950	400	730	4275	1200	5475
Union	30	0	30	30	---	200	200	---	60	60
<b>NORTHEAST DISTRICT</b>	<b>2510</b>	<b>670</b>	<b>1310</b>	<b>1980</b>	<b>908</b>	<b>287</b>	<b>497</b>	<b>6085</b>	<b>3760</b>	<b>9845</b>
Hidalgo	600	500	0	500	900	---	900	4500	---	4500
Luna	350	300	0	300	950	---	950	2850	---	2850
Sierra	20	20	0	20	800	---	800	160	---	160
Socorro	30	30	0	30	740	---	740	222	---	222
<b>SOUTHWEST DISTRICT</b>	<b>1000</b>	<b>850</b>	<b>0</b>	<b>850</b>	<b>910</b>	<b>---</b>	<b>910</b>	<b>7732</b>	<b>---</b>	<b>7732</b>
Chaves	200	180	0	180	1100	---	1100	1980	---	1980
Dona Ana	80	80	0	80	1100	---	1100	880	---	880
Eddy	10	10	0	10	1140	---	1140	114	---	114
Lincoln	10	10	0	10	800	---	800	80	---	80
<b>SOUTHEAST DISTRICT</b>	<b>300</b>	<b>280</b>	<b>0</b>	<b>280</b>	<b>1091</b>	<b>---</b>	<b>1091</b>	<b>3054</b>	<b>---</b>	<b>3054</b>
<b>STATE</b>	<b>5000</b>	<b>2000</b>	<b>2000</b>	<b>4000</b>	<b>910</b>	<b>290</b>	<b>600</b>	<b>18191</b>	<b>5809</b>	<b>24000</b>

1/ Preliminary.

**New Mexico Agricultural Statistics**

LETTUCE - EARLY SPRING: ACREAGE, YIELD, AND PRODUCTION BY COUNTIES, ALL IRRIGATED, 1969 and 1970

County	1969				1970			
	Acres		Yield per	Production	Acres		Yield per	Production
	Planted	Harvested	harvested acre		Planted	Harvested	harvested acre	
Acres	Acres	Cwt.	Cwt.	Acres	Acres	Cwt.	Cwt.	
Bernalillo	20	20	220	4400	20	20	140	2800
Valencia	200	200	190	38000	240	230	150	34500
NORTHWEST DISTRICT	220	220	193	42400	260	250	149	37300
Luna, Sierra, & Socorro	800	610	150	91600	550	480	135	64900
SOUTHWEST DISTRICT	800	610	150	91600	550	480	135	64900
Dona Ana	3980	3970	148	586000	2590	2270	140	317800
SOUTHEAST DISTRICT	3980	3970	148	586000	2590	2270	140	317800
STATE	5000	4800	150	720000	3400	3000	140	420000

LETTUCE-EARLY FALL: ACREAGE, YIELD, AND PRODUCTION, BY COUNTIES, ALL IRRIGATED, 1969 and 1970

County	1969				1970			
	Acres		Yield per	Production	Acres		Yield per	Production
	Planted	Harvested	harvested acre		Planted	Harvested	harvested acre	
Acres	Acres	Cwt.	Cwt.	Acres	Acres	Cwt.	Cwt.	
Bernalillo	20	20	190	3800	---	---	---	---
Valencia	230	200	180	36000	---	---	---	---
NORTHWEST DISTRICT	250	220	181	39800	---	---	---	---
Torrance	850	700	180	126000	300	200	150	30000
NORTHEAST DISTRICT	850	700	180	126000	300	200	150	30000
Luna, Sierra, & Socorro	700	630	197	124200	900	700	214	150000
SOUTHWEST DISTRICT	700	630	197	124200	900	700	214	150000
Dona Ana	3800	3550	220	781000	3900	3400	200	680000
SOUTHEAST DISTRICT	3800	3550	220	781000	3900	3400	200	680000
STATE	5600	5100	210	1071000	5100	4300	200	860000

TOMATOES FOR PROCESSING: ACREAGE, YIELD, AND PRODUCTION, BY COUNTIES, ALL IRRIGATED, 1969 and 1970

County	1969				1970			
	Acres		Yield per	Production	Acres		Yield per	Production
	Planted	Harvested	harvested acre		Planted	Harvested	harvested acre	
Acres	Acres	Tons	Tons	Acres	Acres	Tons	Tons	
Luna	200	150	12.0	1800	700	500	10.0	5000
SOUTHWEST DISTRICT	200	150	12.0	1800	700	500	10.0	5000
Dona Ana	800	650	12.0	7800	400	200	10.0	2000
SOUTHEAST DISTRICT	800	650	12.0	7800	400	200	10.0	2000
STATE	1000	800	12.0	9600	1100	700	10.0	7000

**New Mexico Agricultural Statistics**

ONIONS - EARLY SUMMER: ACREAGE, YIELD AND PRODUCTION, BY COUNTIES, ALL IRRIGATED, 1969 and 1970

County	1969				1970 <sup>1/</sup>			
	Acres		Yield per	Production	Acres		Yield per	Production
	Planted	Harvested	harvested acre		Planted	Harvested	harvested acre	
Acres	Acres	Cwt.	Cwt.	Acres	Acres	Cwt.	Cwt.	
Bernalillo	30	30	240	7200	30	30	240	7200
Santa Fe	20	20	280	5600	20	20	270	5400
Valencia	100	90	270	24300	50	50	250	12500
NORTHWEST DISTRICT	150	140	265	37100	100	100	251	25100
Roosevelt	80	80	285	22800	120	100	290	29000
NORTHEAST DISTRICT	80	80	285	22800	120	100	290	29000
Luna & Sierra	70	70	280	19600	280	250	297	74300
Socorro	30	30	280	8400	70	60	300	18000
SOUTHWEST DISTRICT	100	100	280	28000	350	310	298	92300
Chaves	50	50	280	14000	---	---	---	---
Dona Ana	2970	2800	275	770000	2310	1990	290	577100
Eddy	50	50	290	14500	50	50	290	14500
Lea	200	180	270	48600	170	150	300	45000
SOUTHEAST DISTRICT	3270	3080	275	847100	2530	2190	291	636600
STATE	3600	3400	275	935000	3100	2700	290	783000

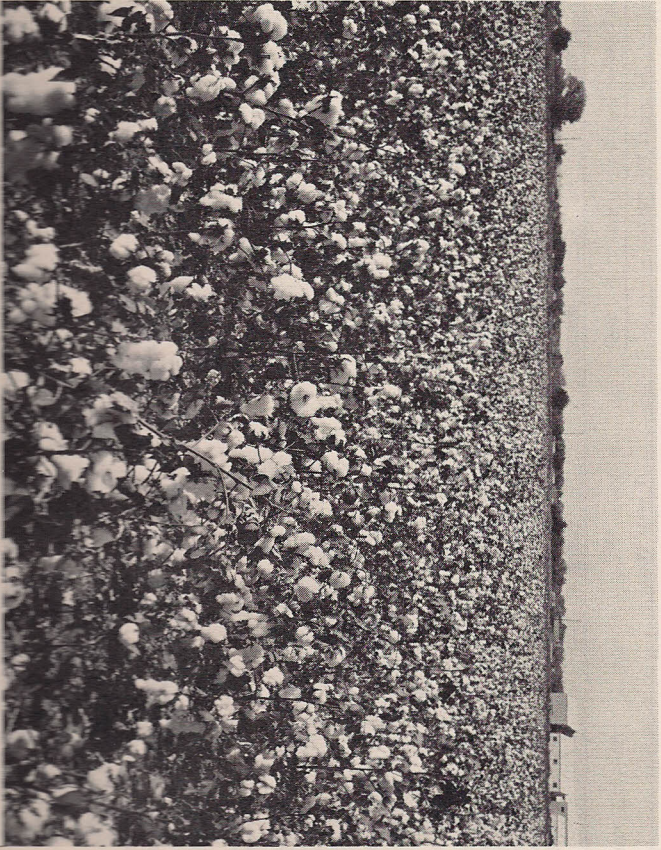
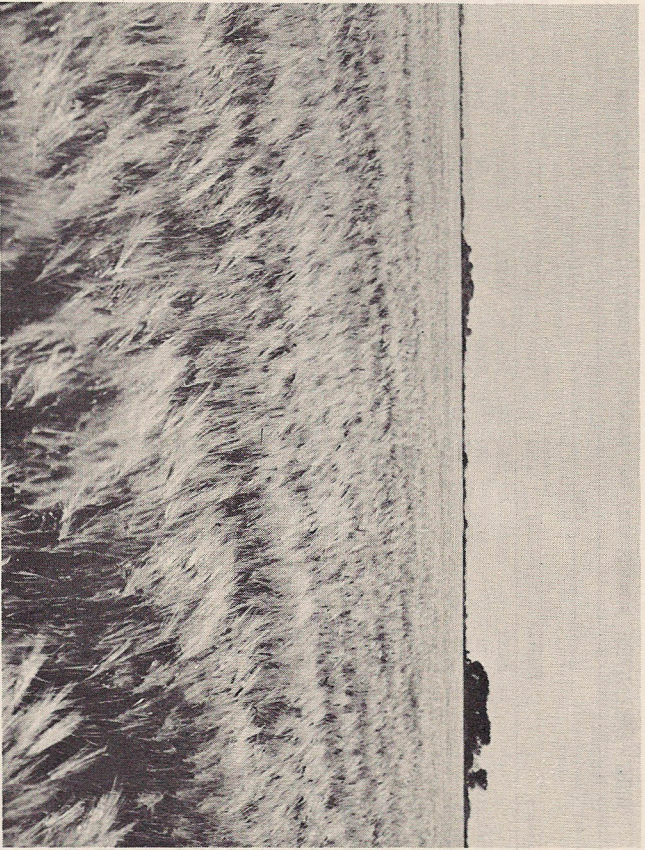
<sup>1/</sup> Preliminary.

APPLES: TREES 1968 AND PRODUCTION 1969 and 1970

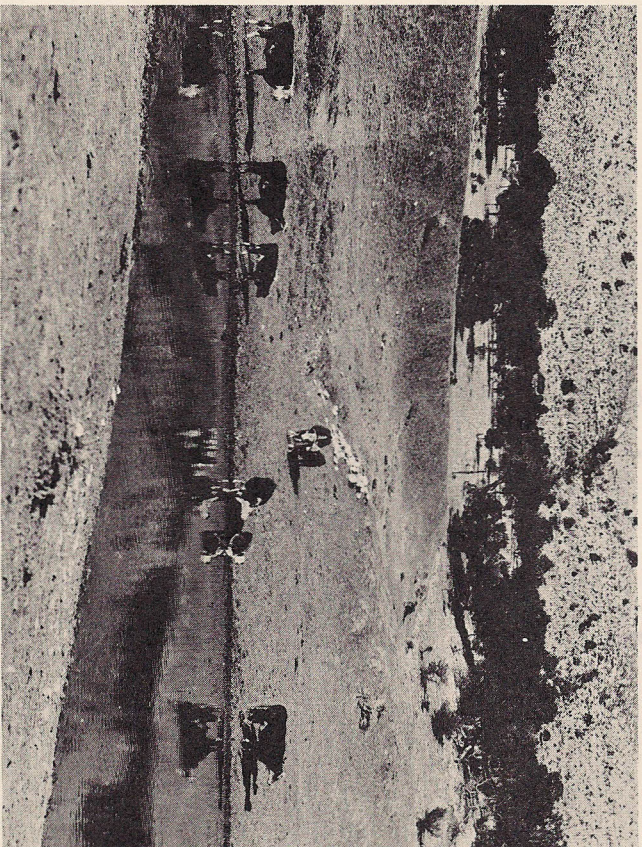
	Total trees <sup>1/</sup>		Production <sup>2/</sup>	
	1968	1969	1970 <sup>3/</sup>	
	Number	Pounds	Pounds	
Bernalillo	9000	523000	550000	
Rio Arriba	93000	3851000	4900000	
Sandoval	19400	2789000	2850000	
San Juan	34200	5577000	5748000	
Santa Fe	17400	3486000	3284000	
Valencia	8400	349000	480000	
NORTHWEST DISTRICT	181400	16575000	17812000	
De Baca	3200	523000	590000	
NORTHEAST DISTRICT	3200	523000	590000	
Grant	12300	1743000	1928000	
Sierra	1410	133000	250000	
SOUTHWEST DISTRICT	13710	1876000	2178000	
Chaves, Dona Ana, & Otero	39690	697000	550000	
Lincoln	44000	5229000	5870000	
SOUTHEAST DISTRICT	83690	5926000	6420000	
STATE	282000	24900000	27000000	

<sup>1/</sup> Orchards of 100 or more trees.  
<sup>2/</sup> Equivalent to 42 pound bushel.  
<sup>3/</sup> Preliminary.

New Mexico Agricultural Statistics



New Mexico Agricultural Statistics





## Livestock Summary

Marketings of livestock and livestock products reached an all-time high value during 1970 for New Mexico ranchers and farmers. Cash farm receipts totaled \$304,862,000 from livestock and livestock products compared to the previous high of \$298,871,000 reached in 1969. Numerous factors contributed to the higher level, including higher prices, heavier slaughter weights for cattle and greater numbers sold.

The cattle feeding industry slowed from the previous year although some new construction is always evident. There were 165,000 head on feed for slaughter market January 1, 1971, well below the 209,000 on feed a year earlier. The number of feedlots remained the same in the State although the trend continues towards larger feedlot capacities. Our fed cattle were marketed at slightly heavier weights in 1970.

The January 1, 1971 Inventory of All Cattle and Calves was down 1 percent from the previous year. The number now stands at 1,372,000 head. Ranchers are holding their cow numbers at about the same level as a year earlier--716,000 head. The decline in overall numbers was largely due to fewer calves under 500 pounds on hand. Feed conditions were poor at the end of the year and lower price levels injected further uncertainty into the cattle future. The inventory reflects January 1 numbers and does not include the large number of steers and heifers that move out of the State during October and November.

The January 1, 1971 Inventory of Milk Cows was 35,000 head compared to 36,000 on hand a year earlier. Milk production for the year 1970 totaled 303 million pounds, a decline in production of 5 million pounds from the previous year. The decline in milk cow numbers more than offset the increased productivity per cow. Total production per cow reached 8,657 pounds in 1970 compared to 8,556 pounds per cow in 1969.

Sheep numbers continued to decline in the State during 1970. As of January 1, 1971, there were 799,000 head on hand compared to 834,000 on hand a year earlier. Mature ewes, at 569,000, accounted for most of the decline as other categories remained at about the same levels. A total of 37,000 sheep and lambs were on feed January 1 compared to 43,000 a year earlier. Shorn wool production was estimated at 6,999,000 pounds during 1970, down 1 percent from the 7,096,000 pounds produced in 1969. Sheep shorn totaled 786,000 head, up nearly 2 percent from the previous year. Average fleece weights were less than in 1969 due to a large increase in the number of feeder lambs shorn. Average price received was 34 cents per pound, 10 cents below the previous year. The 1970 wool production was valued at \$2,380,000, down 24 percent from the value of production in 1969.

The hog inventory increased to 60,000 head by December 1, 1970 from 48,000 head a year earlier. The industry continues its trend toward fewer and larger operations. Controlled environment enterprises continue to hold the interest of a number of operators.

The chicken inventory in New Mexico continued to increase for the seventh consecutive year and is at the highest level since 1946. The numbers stood at 1,340,000 birds January 1, 1971, of which 1,103,000 were hens and pullets of laying age. Expansion of egg producing flocks was the chief reason for the increase.

Red meat production from New Mexico slaughter plants under Federal and State inspection totaled 214,763,000 pounds in 1970 compared to 202,851,000 pounds in 1969. The number of head slaughtered during 1970 and 1969 respectively were: Cattle--341,300 and 333,300; hogs--108,500 and 106,400; and sheep and lambs--73,100 and 60,400.

### LIVESTOCK AND POULTRY: NUMBER ON FARMS AND RANCHES, VALUE PER HEAD, AND TOTAL VALUE, 1970-1971

Class	Number		Value per Head		Total Value	
	1970	1971 <sup>1/</sup>	1970	1971 <sup>1/</sup>	1970	1971 <sup>1/</sup>
	1,000 head	1,000 head	Dollars	Dollars	1,000 dollars	1,000 dollars
ALL CATTLE AND CALVES <sup>2/</sup>	1386.....	1372.....	170.00.....	170.00.....	235620.....	233240.....
COWS AND HEIFERS THAT HAVE CALVED	717	716	190.00	190.00	136230	136040
Beef Cows	681	681	----	----	----	----
Milk Cows	36	35	----	----	----	----
HEIFERS 500 POUNDS AND OVER	166	173	----	----	----	----
For beef cow replacement	83	87	----	----	----	----
For milk cow replacement	10	10	----	----	----	----
Other heifers	73	76	----	----	----	----
STEERS 500 POUNDS AND OVER	149	146	----	----	----	----
BULLS 500 POUNDS AND OVER	33	34	----	----	----	----
HEIFERS, STEERS, AND BULLS UNDER 500 POUNDS	321	303	----	----	----	----
ALL SHEEP AND LAMBS	834.....	799.....	-----	-----	19599.....	17978.....
ON FEED	43	37	----	----	----	----
STOCK SHEEP	791	762	23.50	22.50	18589	17145
Lambs	157	160	----	----	----	----
Ewes	139	140	----	----	----	----
Rams and wethers	18	20	----	----	----	----
One Year Old and Older	634	602	----	----	----	----
Ewes	600	569	----	----	----	----
Rams	30	29	----	----	----	----
Wethers	4	4	----	----	----	----
ALL CHICKENS <sup>3/</sup>	1262.....	1340.....	1.20.....	1.20.....	1514.....	1608.....
HENS AND PULLETS OF LAYING AGE	957	1103	----	----	----	----
Hens	353	397	----	----	----	----
Pullets	604	706	----	----	----	----
PULLETS 3 MONTHS AND OLDER NOT OF LAYING AGE	102	91	----	----	----	----
PULLETS UNDER 3 MONTHS OLD	197	141	----	----	----	----
OTHER CHICKENS	6	5	----	----	----	----
HOGS AND PIGS	48.....	60.....	30.10.....	23.00.....	1445.....	1380.....

<sup>1/</sup> Preliminary.

<sup>2/</sup> Includes January 1 cattle on feed.

<sup>3/</sup> Excludes commercial broilers.

LIVESTOCK: INVENTORY NUMBERS, BIRTHS, AND DISPOSITION, 1968, 1969, and 1970

CATTLE AND CALVES

Year	Inventory January 1		Calves born		Inshipments 1,000 head	Marketings		Farm Slaughter	Deaths	
	All cattle and calves	All cows 2 years and older	Number	As percentage of cows 2 yrs. and older 1/		Cattle	Calves	Cattle and Calves	Cattle	Calves
	1,000 head	1,000 head	1,000 head	Percent		1,000 head	1,000 head	1,000 head	1,000 head	1,000 head
1968 .....	1346	736	633	86	466	757	279	7	18	38
1969 .....	1346	729	634	87	708	959	279	5	24	35
1970 .....	1386	2/ 717	645	3/ 90	832	1236	192	5	20	38

SHEEP AND LAMBS

Year	Inventory January 1		Lambs saved	Inshipments Sheep and Lambs 1,000 head	Marketings 4/		Farm Slaughter	Deaths	
	1,000 head	1,000 head	Percent		Sheep	Lambs	Sheep and Lambs	Sheep	Lambs
	1,000 head	1,000 head	Percent		1,000 head	1,000 head	1,000 head	1,000 head	1,000 head
1968 .....	873	512	81	52	103	289	35	90	80
1969 .....	840	478	78	45	91	236	40	82	80
1970 .....	834	493	82	123	177	269	45	85	75

HOGS AND PIGS

Year	Inventory December 1		December-May		June-November		Disposition			
	Previous year	Current year	Sows farrowed	Pig Crop	Sows farrowed	Pig Crop	Inshipments	Marketings 4/	Farm slaughter	Deaths
	1,000 head	1,000 head	1,000 head	1,000 head	1,000 head	1,000 head	1,000 head	1,000 head	1,000 head	1,000 head
1968 .....	42	48	5.4	40	5.6	42	4	71	5	4
1969 .....	48	48	6.5	46	6.1	45	3	85	5	4
1970 .....	48	60	6.6	47	6.1	41	5	72	5	4

1/ Not strictly a calving rate. Figure represents calves born expressed as a percentage of January 1 inventory of cows and heifers 2 years old and over and not the number of all cows and heifers giving birth to calves during the year. 2/ Cows and heifers that have calved.  
3/ Percent of cows and heifers that have calved. 4/ Excludes inter-farm sales, but includes animals custom slaughtered for use on farms where produced.

LIVESTOCK: PRODUCTION AND INCOME, 1968, 1969, and 1970

CATTLE AND CALVES

Year	Production 1/	Marketings 2/	Price per 100 pounds		Value of production	Cash receipts 3/	Value of home consumption	Gross income	Cost of inshipments
	1,000 pounds	1,000 pounds	Cattle	Calves	1,000 dollars	1,000 dollars	1,000 dollars	1,000 dollars	1,000 dollars
	1,000 pounds	1,000 pounds	Dollars	Dollars	dollars	dollars	dollars	dollars	dollars
1968 .....	469210	725361	24.40	28.10	118276	181087	1586	182673	64056
1969 .....	517390	910200	27.60	31.30	147186	255422	1498	256920	114696
1970 .....	639119	1135290	28.40	33.20	184927	326067	1985	328052	137280

SHEEP AND LAMBS

Year	Production 1/	Marketings 2/	Price per 100 pounds		Value of production	Cash receipts 3/	Value of home consumption	Gross income	Cost of inshipments
	1,000 pounds	1,000 pounds	Sheep	Lambs	1,000 dollars	1,000 dollars	1,000 dollars	1,000 dollars	1,000 dollars
	1,000 pounds	1,000 pounds	Dollars	Dollars	dollars	dollars	dollars	dollars	dollars
1968 .....	33466	34385	7.70	23.90	6318	6368	402	6770	400
1969 .....	28454	29317	8.10	27.70	6248	6077	598	6675	449
1970 .....	33528	41793	8.80	26.40	6689	7452	680	8132	1160

HOGS

Year	Production 1/	Marketings 2/	Price per 100 pounds		Value of production	Cash Receipts 3/	Value of home consumption	Gross income	Cost of inshipments
	1,000 pounds	1,000 pounds	Dollars		1,000 dollars	1,000 dollars	1,000 dollars	1,000 dollars	1,000 dollars
	1,000 pounds	1,000 pounds	Dollars	Dollars	dollars	dollars	dollars	dollars	dollars
1968 .....	18043	15490	18.30	23.00	3302	2835	373	3208	55
1969 .....	20579	18886	22.00	27.70	4527	4155	481	4636	53
1970 .....	19253	16086	22.50	27.70	4332	3619	411	4030	104

1/ Adjustments made for inshipments and changes in inventory.  
2/ Excludes inter-farm sales.  
3/ Includes receipts from marketings and from sales of farm-slaughtered meat.

NUMBER OF CATTLE FEEDLOTS AND FED CATTLE MARKETED BY SIZE OF FEEDLOT CAPACITY  
1964-1970 1/

Year	Under 1,000 head		1,000-3,999 head		4,000-7,999 head		8,000-15,999 head		16,000 and over head		Total all Feedlots	
	Lots	Cattle Mkted.	Lots	Cattle Mkted.	Lots	Cattle Mkted.	Lots	Cattle Mkted.	Lots	Cattle Mkted.	Lots	Cattle Mkted.
	No.	1,000 head	No.	1,000 head	No.	1,000 head	No.	1,000 head	No.	1,000 head	No.	1,000 head
1964	100	17	23	57	7	22	5	70	---	---	135	166
1965	91	11	30	49	6	21	2/ 8	2/ 92	---	---	135	173
1966	83	10	32	50	11	32	2/ 9	2/112	---	---	135	204
1967	52	12	32	36	11	50	2/11	2/140	---	---	106	238
1968	36	10	22	56	6	45	8	82	4	123	76	316
1969	27	7	18	32	9	53	10	123	4	145	68	360
1970	23	5	19	32	12	71	9	139	5	146	68	393

1/ Number of feedlots with 1,000-head or more capacity is number of lots operating any time during year. Number under 1,000-head capacity and total number of all feedlots is number at end of year.

2/ Lots and marketings from larger size groups are included to avoid disclosing individual operations.

CATTLE ON FEED: NUMBER ON FEED, PLACEMENTS, AND MARKETINGS, BY QUARTERS, 1968-1971

Year	Number on feed				Placed on feed				Number Marketed			
	Jan. 1	Apr. 1	July 1	Oct. 1	Jan. 1- March 31	Apr. 1- June 30	July 1- Sept. 30	Oct. 1- Dec. 31	Jan. 1- March 30	Apr. 1- June 30	July 1- Sept. 30	Oct. 1- Dec. 31
	--- 1,000 Head ---				--- 1,000 Head ---				--- 1,000 Head ---			
1968	185	170	147	160	67	63	94	116	82	86	81	67
1969	209	192	195	187	76	100	89	95	93	97	97	73
1970	209	194	183	173	91	88	87	83	106	99	97	91
1971	165	163	---	---	87	--	--	--	89	--	--	--

CATTLE AND CALVES ON FEED: NUMBER ON FEED BY WEIGHT GROUPS, CLASSES, AND LENGTH OF TIME, BY QUARTERS, 1968-70

Year and Month	Number on feed by weight groups					Number on feed by classes			Number on feed by time			
	Under 500 pounds	500-699 pounds	700-899 pounds	900-1099 pounds	1100 pounds and over	Steers and steer calves	Heifers and heifer calves	Cows and others	Less than 3 months	3 to 6 months	6 months and over	
	-----Thousand Head-----											
<b>1968</b>												
January 1	22	66	69	25	3	103	80	2	110	60	15	
April 1	15	65	53	34	3	93	75	2	65	88	17	
July 1	12	45	61	28	1	81	64	2	62	59	26	
October 1	24	62	45	24	5	96	63	1	94	53	13	
<b>1969</b>												
January 1	30	71	73	28	7	130	77	2	115	79	15	
April 1	14	60	74	43	1	119	71	2	75	86	31	
July 1	19	68	62	43	3	109	85	1	100	70	25	
October 1	23	55	75	29	5	104	82	1	88	84	15	
<b>1970</b>												
January 1	29	55	83	39	3	124	81	4	94	86	29	
April 1	18	72	54	47	3	117	74	3	89	91	14	
July 1	18	52	79	32	2	115	66	2	88	80	15	
October 1	21	47	58	44	3	110	62	1	87	71	15	
<b>1971</b>												
January 1	24	57	48	31	5	91	71	3	79	74	12	
April 1 1/	25	57	58	21	2	80	81	2	86	62	15	

1/ Preliminary.

LIVESTOCK SLAUGHTER: NUMBER SLAUGHTERED, AVERAGE AND TOTAL LIVELWEIGHT, BY SPECIES, 1968, 1969 and 1970

Year	Cattle			Calves			Hogs			Sheep and lambs		
	Number	Average liveweight per head	Total liveweight	Number	Average liveweight per head	Total liveweight	Number	Average liveweight per head	Total liveweight	Number	Average liveweight per head	Total liveweight
	1,000 head	Pounds	1,000 pounds	1,000 head	Pounds	1,000 pounds	1,000 head	Pounds	1,000 pounds	1,000 head	Pounds	1,000 pounds
1968	313.8	965	302890	.9	490	441	105.3	232	24460	62.8	110	6886
1969	333.3	973	324160	---	---	---	106.4	236	25080	60.4	110	6628
1970	341.3	997	340410	---	---	---	108.5	232	25212	73.1	109	7981

FARM CHICKENS: NUMBER RAISED, PRODUCED, DISPOSITION, AND INCOME, 1968, 1969 and 1970 1/

Year	Raised	Lost	Produced	Consumed	Sold	Pounds	Pounds	Price	Value of	Cash	Value of	Gross
	2/ 1,000 head	3/ 1,000 head	4/ 1,000 head	In Farm Household	1,000 head	Produced 4/ 1,000 pounds	Consumed In Farm Household	Per Pound	Production 1,000 dollars	Receipts 1,000 dollars	Chickens Consumed 1,000 dollars	Income 1,000 dollars
1968	771	145	626	73	524	2537	248	9.8	249	216	24	240
1969	964	203	761	66	396	2980	231	10.0	298	162	23	185
1970 5/	954	200	754	66	610	3321	264	8.0	266	205	21	226

1/ Does not include commercial broilers. 2/ Does not include young chickens lost. 3/ Loss during the year of chickens on hand January 1.  
4/ Production is the number (or pounds) available for utilization during the year. 5/ Preliminary.

CHICKENS AND EGGS: CHICKENS RAISED, AVERAGE NUMBER OF LAYERS ON HAND, EGG PRODUCTION, PRICE, AND INCOME, 1968, 1969 and 1970

Year	Chickens	Average Yearly	Eggs	Eggs	Eggs	Price	Cash	Value of Eggs	Gross
	Raised	Number of	Produced	Consumed in	Sold	Per	Receipts	Consumed in	Income
	1,000 head	1,000 head	1,000,000 eggs	1,000,000 eggs	1,000,000 eggs	Dozen	1,000 dollars	1,000 dollars	1,000 dollars
1968	771	722	159	5	154	39.9	5120	166	5286
1969	964	863	194	5	189	43.3	6820	180	7000
1970 1/	954	968	224	4	220	39.3	7205	131	7336

1/ Preliminary.

MILK: PRODUCTION, DISPOSITION, PRICE AND INCOME, 1968, 1969, and 1970

Year	Milk Cows on Farms 1/	Milk Produc- tion Per Cow 2/	Total Milk Produc- tion 2/	Disposition of Milk Produced				Value of Sales (Receipts From Farm Marketings)	Gross Farm Income From Dairy Products	
				Used on Farms Where Produced	Sold Wholesale		Milk and Cream Retailed by Farmer			
					Whole Milk	Price Per 100 pounds	Milk EQUIVA- lent			Price Per Quart
	1,000 head	Pounds	Million pounds	Million pounds	Million pounds	Dollars	Million quarts	Cents	1,000 dollars	1,000 dollars
1968	38	8290	315	13	266	5.86	17	27.1	20195	20797
1969	36	8556	308	12	258	6.18	18	27.5	20804	21366
1970 3/	35	8657	303	12	252	6.41	18	32.0	21958	22562

1/ Average number on farms during year, excluding heifers not yet fresh. 2/ Excludes milk sucked by calves. 3/ Preliminary.

WOOL: NUMBER OF SHEEP SHORN, FLEECE WEIGHT, PRODUCTION, PRICE AND VALUE, 1968, 1969, and 1970

Year	Sheep	Average	Production	Price	Total
	Shorn 1/	Fleece weight	1,000 pounds	per Pound	Value 1,000 dollars
1968	806	9.1	7374	43.0	3171
1969	774	9.2	7096	44.0	3122
1970 2/	786	8.9	6999	34.0	2380

1/ Includes shearing at commercial feeding yards.  
2/ Preliminary.

GOATS: NUMBER OF GOATS CLIPPED, FLEECE WEIGHT, PRODUCTION, PRICE, AND VALUE, 1968, 1969, and 1970

Year	Goats	Average	Production	Price	Total
	Clipped	fleece weight	1,000 pounds	per Pound	Value 1,000 dollars
1968	61	4.1	249	43.0	107
1969	55	3.9	214	42.0	90
1970 1/	55	3.7	204	38.0	78

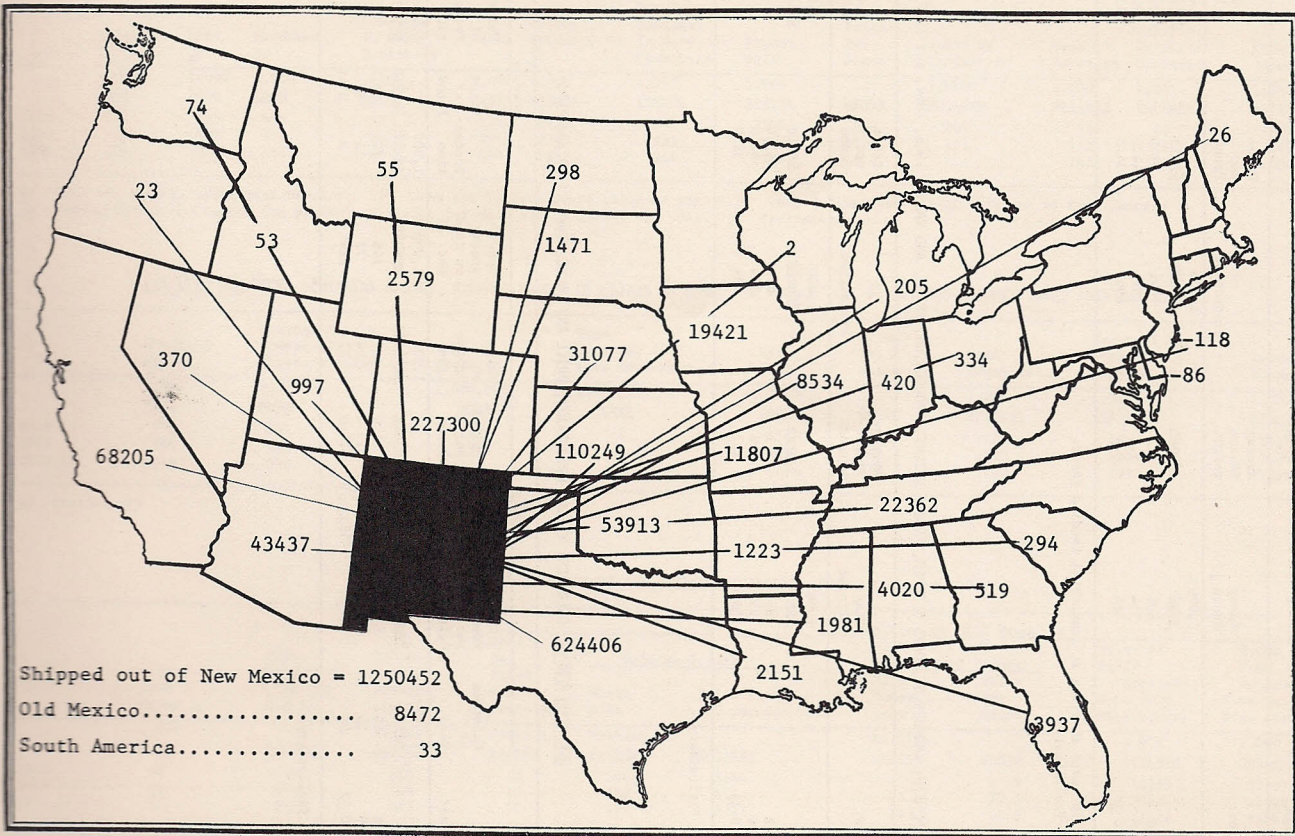
1/ Preliminary.

BEES AND HONEY: COLONIES, YIELD, PRODUCTION, PRICE AND VALUE, 1968, 1969 and 1970

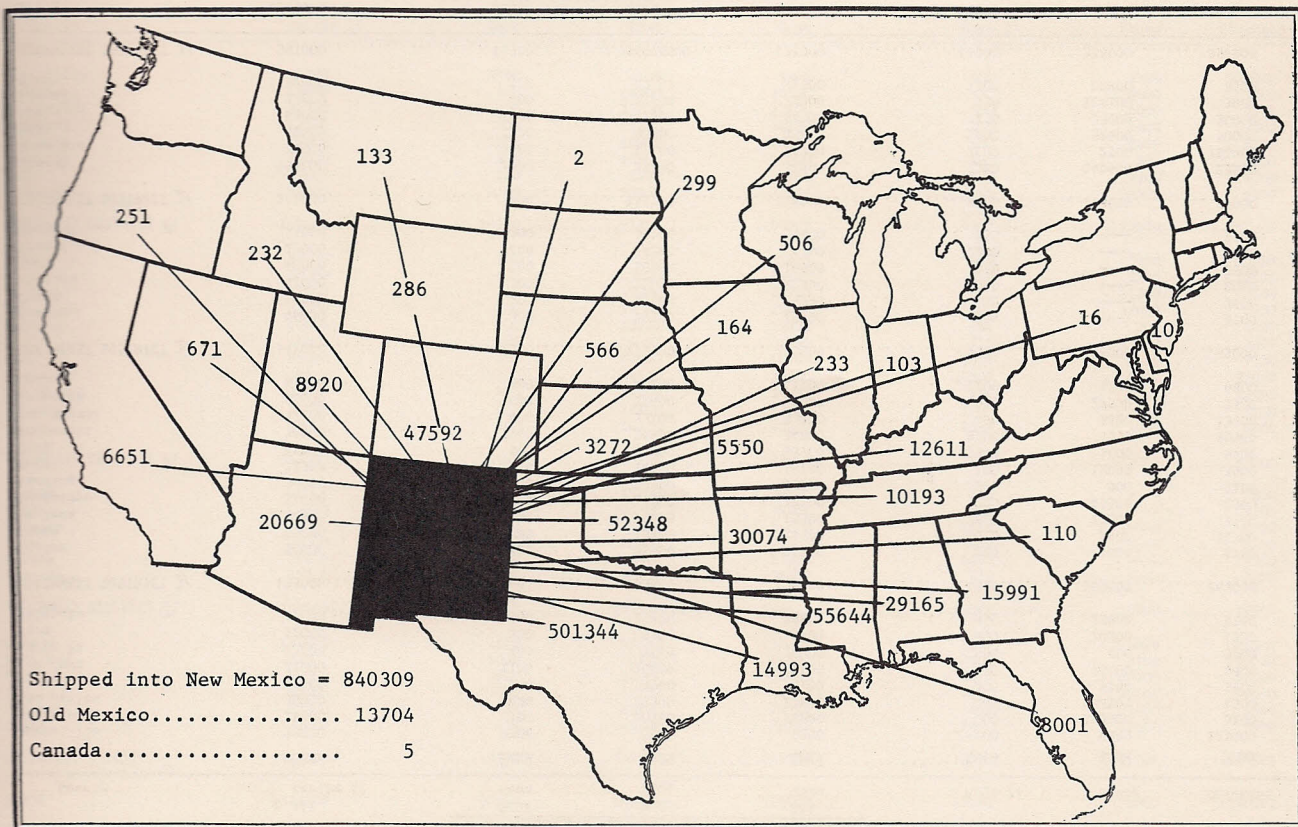
Year	Colonies	Pound	Production	Price	Value	Honey	Price	Value
	of Bees	per Colony	1,000 pounds	per Pound	1,000 dollars	stocks on Hand Dec. 15	per Pound	1,000 dollars
1968	15	61	915	11.0	101	146	18	65.0
1969	15	48	720	13.0	94	72	12	58.0
1970 1/	15	37	555	14.8	82	128	8	55.0

1/ Preliminary.

CATTLE SHIPPED OUT OF NEW MEXICO BY STATE OF DESTINATION 1970



CATTLE SHIPPED INTO NEW MEXICO BY STATE OF ORIGIN, 1970 <sup>1/</sup>



<sup>1/</sup> Includes shipments to the Clovis yards.

LIVESTOCK INVENTORY: NUMBER ON FARMS, BY COUNTIES, JANUARY 1, 1970

County	All cattle <sup>1/</sup>	Cows and heifers that have calved			Hogs <sup>2/</sup>	Sheep	Chickens
		Milk Cows	Beef Cows	All Cows			
	Head	Head	Head	Head	Head	Head	Head
Bernalillo	23000	3300	5900	9200	700	6800	228000
McKinley	19000	100	10700	10800	400	123000	3100
Rio Arriba	30000	400	17500	17900	200	38500	4500
Sandoval	16000	200	9900	10100	200	9500	3600
San Juan	21000	1100	10400	11500	550	76100	6800
Santa Fe	25000	400	9600	10000	400	800	5900
Taos	12000	200	5500	5700	600	20300	4900
Valencia	47000	3900	25900	29800	950	28000	6200
NORTHWEST DISTRICT <sup>3/</sup>	193000	9600	95400	105000	4000	303000	263000
Colfax	56000	300	31000	31300	500	4000	5700
Curry	66000	600	13800	14400	2500	2400	12700
De Baca	32000	300	15200	15500	800	22300	2500
Guadalupe	31000	200	17900	18100	200	43500	2500
Harding	36000	200	22900	23100	100	900	2100
Mora	21000	500	14600	15100	100	12000	3900
Quay	65000	900	38800	39700	3900	3400	9400
Roosevelt	74000	7900	26900	34800	8500	4000	20500
San Miguel	52000	400	33400	33800	400	3500	13400
Torrance	25000	600	17400	18000	900	27500	3500
Union	83000	400	40800	41200	1100	1500	6800
NORTHEAST DISTRICT <sup>3/</sup>	541000	12300	272700	285000	19000	125000	83000
Catron	46000	300	29500	29800	150	---	3700
Grant	50000	400	33600	34000	450	---	3600
Hidalgo	41000	300	22000	22300	5000	---	2000
Luna	40000	200	16600	16800	1350	---	3500
Sierra	29000	2400	14300	16700	1800	---	4500
Socorro	55000	200	36200	36400	250	---	2700
SOUTHWEST DISTRICT <sup>3/</sup>	261000	3800	152200	156000	9000	18000	20000
Chaves	166000	2200	29400	31600	7300	148600	23500
Dona Ana	30000	3600	11100	14700	2600	2500	786000
Eddy	62000	1700	33700	35400	1400	52600	50000
Lea	68000	1900	42600	44500	3150	33300	30000
Lincoln	33000	400	21600	22000	350	128100	3000
Otero	32000	500	22300	22800	1200	22900	3500
SOUTHEAST DISTRICT <sup>3/</sup>	391000	10300	160700	171000	16000	388000	896000
STATE	1386000	36000	681000	717000	48000	834000	1262000

<sup>1/</sup> Includes cows and heifers that have calved.  
<sup>2/</sup> December 1, 1969.  
<sup>3/</sup> District total includes counties for which separate estimates were not made.

LIVESTOCK INVENTORY: NUMBER ON FARMS, BY COUNTIES, JANUARY 1, 1971 <sup>1/</sup>

County	All cattle <sup>2/</sup>	Cows and heifers that have calved			Hogs <sup>3/</sup>	Sheep	Chickens
		Milk Cows	Beef Cows	All Cows			
		---1,000 Head---					
Bernalillo	24000	3700	6100	9800	650	6200	228000
McKinley	18000	100	10400	10500	450	120000	3000
Rio Arriba	32000	300	17200	17500	300	36000	4200
Sandoval	17000	800	9800	10600	250	9500	3500
San Juan	22000	1200	10800	12000	650	72000	6900
Santa Fe	27000	400	10600	11000	400	800	5700
Taos	11000	100	5400	5500	600	19000	4700
Valencia	48000	3700	25400	29100	1000	26500	6000
NORTHWEST DISTRICT <sup>4/</sup>	199000	10300	95700	106000	4300	290000	262000
Colfax	58000	300	31100	31400	600	3900	5600
Curry	56000	600	13800	14400	2700	2200	12500
De Baca	31000	200	15000	15200	1100	21200	2500
Guadalupe	33000	200	19200	19400	300	39000	2500
Harding	40000	200	23200	23400	150	900	2100
Mora	26000	400	14300	14700	150	11700	3600
Quay	65000	900	40000	40900	4800	3200	9100
Roosevelt	70000	7300	28300	35600	10800	3800	22000
San Miguel	52000	400	34400	34800	400	3200	13300
Torrance	24000	500	17100	17600	1100	25500	3200
Union	97000	400	40200	40600	1500	1400	6600
NORTHEAST DISTRICT <sup>4/</sup>	552000	11400	276600	288000	23600	116000	83000
Catron	44000	300	29200	29500	150	---	3600
Grant	53000	300	34400	34700	500	---	3500
Hidalgo	41000	300	20700	21000	7500	---	2000
Luna	38000	200	15600	15800	1000	---	3400
Sierra	28000	2300	14700	17000	2000	---	4100
Socorro	52000	100	35900	36000	250	---	2400
SOUTHWEST DISTRICT <sup>4/</sup>	256000	3500	150500	154000	11400	17000	19000
Chaves	131000	2100	29300	31400	9800	144000	24500
Dona Ana	29000	4000	10500	14500	3500	2500	875000
Eddy	66000	1000	31900	32900	1600	50000	50000
Lea	67000	1900	42100	44000	4100	32000	20000
Lincoln	39000	400	24100	24500	450	125000	3000
Otero	33000	400	20300	20700	1250	22500	3500
SOUTHEAST DISTRICT <sup>4/</sup>	365000	9800	158200	168000	20700	376000	976000
STATE	1372000	35000	681000	716000	60000	799000	1340000

<sup>1/</sup> Preliminary. <sup>2/</sup> Includes cows and heifers that have calved. <sup>3/</sup> December 1, 1970.  
<sup>4/</sup> District total includes counties for which separate estimates were not made.

SHEEP ON FEED; NUMBER ON FEED, BY COUNTIES, JANUARY 1, 1967-1971

	1967		1968		1969		1970		1971 1/	
	Head	Head	Head	Head	Head	Head	Head	Head	Head	Head
NORTHWEST DISTRICT	1000	1400	1400	500	700					
NORTHEAST DISTRICT	5500	2100	2000	5000	6500					
SOUTHWEST DISTRICT	0	0	600	100	100					
Chaves	46000	35000	30000	31500	24000					
Eddy	5700	4000	2/0	2/0	2/0					
Lea	0	0	2/0	2/0	2/0					
Lincoln	7200	6000	2/0	2/0	2/0					
Other Counties	2600	1500	7000	5900	5700					
SOUTHEAST DISTRICT	61500	46500	37000	37400	29700					
STATE	68000	50000	41000	43000	37000					

1/ Preliminary. 2/ Eddy and Lincoln County data combined with other counties to avoid disclosure of individual operations.

CATTLE ON FEED; NUMBER OF FEEDLOTS, CAPACITY, NUMBER ON FEED, BY COUNTIES AND QUARTERS, JANUARY 1, 1968-APRIL 1, 1971

County	Number of Feedlots January 1 1971		One Time Capacity January 1 1971		Jan. 1 1968		Jan. 1 1969		Jan. 1 1970		Apr. 1 1970		July 1 1970		Oct. 1 1970		Jan. 1 1971		Apr. 1 1971 1/		
	Number	Head	Number	Head	Number	Head	Number	Head	Number	Head	Number	Head	Number	Head	Number	Head	Number	Head	Number	Head	
NORTHWEST DISTRICT 2/	3	18000	12300	13600	41200	13100	41200	13200	34900	11800	9800	28700	31300	16100	14800						
Curry	8	57000	42400	44700	8100	6300	6300	6300	6300	33500	28700	7400	9000	31300	3200						
Doña Ana	3	16000	7000	8900	8100	6900	7800	6600	5500	5500	4000	4400	4400	4400	7600						
Eddy	7	75000	23100	26200	23500	21900	21900	21900	22900	22900	31800	41200	41200	41200	43400						
Other Counties 2/																					
NORTHEAST DISTRICT	18	148000	72500	79800	72800	63100	63100	63100	61900	61900	67900	81500	81500	84200							
SOUTHWEST DISTRICT 2/	7	10000	7300	5600	6000	5600	5600	5600	4300	4300	3600	4300	4300	4600							
Chaves	21	127000	80000	93000	93800	90900	90900	90900	84000	84000	72500	46000	46000	40600							
Doña Ana	9	19000	4500	7000	7000	6600	6600	6600	6300	6300	4000	4400	4400	5700							
Eddy	5	12000	5400	8100	6900	7800	7800	7800	6500	6500	7700	6700	6700	7200							
Other Counties 2/	5	16000	3000	4400	9400	6800	6800	6800	8200	8200	7500	6000	6000	5900							
SOUTHEAST DISTRICT	40	174000	92900	110000	117100	112100	112100	112100	105000	105000	91700	63100	63100	59400							
STATE	68	350000	185000	209000	209000	194000	194000	194000	183000	183000	173000	165000	165000	163000							

1/ Preliminary. 2/ Districts and other counties combined to avoid disclosing individual operations.

PRICES RECEIVED BY FARMERS AND RANCHERS:  
PRINCIPAL CROPS, LIVESTOCK, AND LIVESTOCK PRODUCTS, BY MONTHS, AND YEARS, 1966-1970

Year	Jan.	Feb.	Mar.	Apr.	May	June	July	Aug.	Sept.	Oct.	Nov.	Dec.
GRAIN SORGHUM (Dollars per CWT)												
1966	1.80	1.81	1.82	1.80	1.82	1.84	1.90	1.95	1.95	1.80	1.80	1.83
1967	1.89	1.90	1.94	1.98	2.00	2.02	2.01	2.00	1.90	1.85	1.75	1.75
1968	1.76	1.85	1.87	1.87	1.80	1.80	1.78	1.75	1.68	1.75	1.78	1.78
1969	1.80	1.80	1.80	1.80	1.85	1.82	1.90	1.91	2.00	2.09	2.10	2.07
1970 1/	2.10	2.10	2.05	2.05	2.00	1.98	2.05	2.00	2.10	2.05	2.05	2.10
UPLAND COTTON (Cents per pound)												
1966	29.0	30.0	30.0	29.5	30.0	34.0	33.5	----	----	28.8	29.0	25.9
1967	26.0	24.0	22.0	22.0	22.0	22.0	25.0	----	----	36.0	37.2	34.0
1968	23.5	23.5	25.0	21.0	23.5	24.0	25.0	----	----	29.5	27.5	26.5
1969	26.0	25.5	26.0	26.0	25.0	25.0	25.0	----	----	26.0	25.0	24.5
1970 1/	22.5	24.0	24.0	25.0	25.0	24.0	22.5	----	----	----	24.0	22.0
ALL HAY (Dollars per ton)												
1966	25.60	25.50	26.00	25.50	24.00	21.00	21.00	22.00	22.00	24.00	26.50	29.00
1967	30.50	33.50	35.50	34.50	23.70	28.70	26.00	26.70	26.70	28.00	31.00	34.20
1968	37.40	38.00	36.00	34.00	27.50	25.00	23.50	23.00	23.00	24.50	27.50	31.50
1969	31.00	31.00	31.00	32.00	27.50	24.00	24.50	24.50	23.50	25.50	28.50	30.50
1970 1/	31.50	33.00	33.00	33.00	30.50	26.50	25.50	25.50	28.50	31.50	34.00	37.00
BEEF CATTLE (Dollars per 100 pounds)												
1966	20.70	23.40	25.00	24.70	23.90	23.10	22.00	23.70	23.30	23.70	22.70	21.40
1967	22.50	22.40	22.20	22.30	23.10	22.50	23.60	24.00	23.60	24.10	22.30	21.70
1968	22.40	22.90	24.00	23.90	23.40	24.20	24.70	24.40	24.50	24.90	24.60	24.20
1969	25.10	25.40	26.60	27.80	29.50	31.30	29.40	28.00	27.70	27.50	26.90	27.00
1970 1/	27.50	28.40	30.50	29.90	29.20	28.40	29.00	27.80	27.40	29.00	27.20	25.50
CALVES (Dollars per 100 pounds)												
1966	24.00	27.00	27.80	27.80	26.80	26.00	25.00	26.00	26.70	26.50	26.50	26.50
1967	26.50	26.00	26.00	26.50	28.00	27.00	27.00	27.00	27.70	26.50	26.00	26.20
1968	26.30	27.00	27.50	27.70	28.00	28.50	28.00	28.00	27.50	28.00	28.50	28.80
1969	29.00	29.50	31.00	32.50	35.00	36.00	33.00	31.50	30.50	31.00	31.50	32.00
1970 1/	33.00	35.00	37.50	36.00	36.00	33.50	33.30	32.50	33.00	33.50	32.00	31.00
LAMBS (Dollars per 100 pounds)												
1966	26.00	26.50	25.80	25.00	24.50	24.30	24.00	24.50	24.50	24.00	23.50	23.50
1967	23.00	20.00	20.00	20.00	23.70	23.50	23.40	23.00	22.00	22.50	22.70	23.00
1968	22.00	22.50	24.50	25.00	25.00	24.50	24.50	23.50	24.00	24.00	24.50	24.50
1969	25.50	27.00	27.50	27.50	27.50	27.00	27.00	27.00	27.50	28.00	28.50	28.50
1970 1/	28.50	28.50	28.50	28.00	27.50	27.50	27.50	27.00	27.00	26.00	25.50	23.00
MILK, WHOLESALE (Dollars per 100 pounds)												
1966	5.55	5.55	5.50	5.45	5.20	5.10	5.60	5.75	6.15	6.30	6.25	6.10
1967	6.20	6.10	5.65	5.45	5.65	5.50	5.45	5.65	5.90	5.90	6.00	6.05
1968	6.05	5.90	5.80	5.65	5.65	5.45	5.60	5.65	5.90	6.00	6.30	6.40
1969	6.35	6.25	6.25	6.10	5.90	5.65	5.90	6.00	6.25	6.45	6.50	6.65
1970 1/	6.60	6.45	6.30	6.30	6.05	6.25	6.00	6.00	6.55	6.70	6.90	7.00
EGGS (Cents per dozen)												
1966	44.00	44.00	45.00	44.00	40.00	40.00	42.00	45.00	47.00	48.00	45.00	44.00
1967	44.00	42.00	42.00	36.00	35.00	32.00	32.00	36.00	38.00	37.00	36.00	40.00
1968	35.00	36.00	35.00	35.00	33.00	36.00	40.00	40.00	48.00	46.00	47.00	48.00
1969	47.00	43.00	42.00	39.00	35.00	35.00	40.00	39.00	44.00	45.00	53.00	58.00
1970 1/	57.00	53.00	43.00	35.00	30.00	33.00	38.00	32.00	36.00	33.00	38.00	42.00

1/ Subject to revision.

CROP VALUES: FARM VALUES OF PRODUCTION OF PRINCIPAL CROPS, BY COUNTIES, 1969

County	Wheat	Sorghum for Grain	Corn for Grain	Barley	Cotton and Cottonseed	All Hay	Alfalfa Seed	Broomcorn
	1,000 dollars	1,000 dollars	1,000 dollars	1,000 dollars	1,000 dollars	1,000 dollars	1,000 dollars	1,000 dollars
Bernalillo	4.5	17.3	3.8	3.5	---	624.8	---	---
McKinley	5.2	2.3	37.7	0.1	---	111.2	---	---
Rio Arriba	55.3	---	17.9	6.4	---	509.0	---	---
Sandoval	4.0	---	58.8	---	---	503.0	---	---
San Juan	8.0	13.9	255.7	4.5	---	1481.0	---	---
Santa Fe	34.0	---	104.0	11.0	---	400.4	---	---
Taos	26.0	---	20.7	33.8	---	568.6	---	---
Valencia	9.0	6.2	31.0	7.7	---	1965.0	---	---
NORTHWEST DISTRICT <sup>1/</sup>	146.0	39.7	529.6	67.0	---	6163.0	---	---
Colfax	54.0	3.5	21.4	21.7	---	1067.9	---	---
Curry	3428.0	7054.0	48.5	58.3	39.1	458.2	---	27.3
De Baca	6.0	58.0	3.0	1.7	4.4	482.0	---	---
Guadalupe	---	2.9	15.4	---	---	143.6	---	---
Harding	53.0	25.5	2.7	0.6	---	297.0	---	50.8
Mora	6.0	---	2.6	2.8	---	543.2	---	---
Quay	977.0	1025.7	0.6	9.7	164.3	912.1	---	358.0
Roosevelt	555.0	3225.7	43.1	21.3	761.7	554.6	---	867.7
San Miguel	8.0	9.6	15.1	2.7	---	230.0	---	---
Torrance	69.0	9.7	160.7	36.0	---	653.9	---	---
Union	61.0	1474.9	258.8	1.5	---	569.2	---	26.2
NORTHEAST DISTRICT <sup>1/</sup>	5217.0	12889.5	571.9	156.3	969.5	5911.7	5.0	1330.0
Catron	1.0	---	1.7	---	---	37.0	---	---
Grant	3.3	149.6	10.8	5.4	10.9	193.3	---	---
Hidalgo	67.0	1131.0	27.1	52.4	712.1	243.5	---	---
Luna	79.0	2589.1	206.1	102.7	3047.3	193.6	---	---
Sierra	---	4.9	7.7	0.5	267.7	160.7	---	---
Socorro	2.6	40.8	34.5	2.1	199.3	1031.9	---	---
SOUTHWEST DISTRICT <sup>1/</sup>	152.9	3915.4	287.9	163.1	4237.3	1860.0	---	---
Chaves	5.1	338.7	46.9	207.4	4899.8	6377.9	127.5	---
Dona Ana	6.0	208.6	13.2	141.2	6474.0	2209.4	88.9	---
Eddy	0.9	207.2	4.0	116.5	3872.8	4496.6	106.6	---
Lea	---	1877.9	8.8	7.5	2166.2	1282.8	---	---
Lincoln	---	4.1	6.6	---	---	109.1	---	---
Otero	10.1	71.9	7.1	10.0	178.4	209.5	---	---
SOUTHEAST DISTRICT <sup>1/</sup>	22.1	2708.4	86.6	482.6	17591.2	14766.3	323.0	---
STATE	5538.0	19553.0	1476.0	869.0	22798.0	28701.0	328.0	1330.0

CROP VALUES: FARM VALUES OF PRODUCTION OF PRINCIPAL CROPS, BY COUNTIES, 1969

County	Potatoes	Peanuts	Dry Beans	Early Spring and Early Fall Lettuce	Processing Tomatoes	Onions	Apples	Totals
	1,000 dollars	1,000 dollars	1,000 dollars	1,000 dollars	1,000 dollars	1,000 dollars	1,000 dollars	1,000 dollars
Bernalillo	---	---	1.9	48.7	---	25.0	30.6	760.1
McKinley	---	---	22.5	---	---	---	---	179.0
Rio Arriba	---	---	0.2	---	---	---	225.3	814.1
Sandoval	---	---	---	---	---	---	163.2	729.0
San Juan	75.0	---	6.8	---	---	---	326.3	2171.2
Santa Fe	138.0	---	1.7	---	---	20.0	203.9	913.0
Taos	---	---	1.9	---	---	---	---	651.0
Valencia	---	---	1.0	440.3	---	86.0	20.4	2566.6
NORTHWEST DISTRICT <sup>1/</sup>	242.5	---	36.0	489.0	---	131.0	969.7	8813.5
Colfax	---	---	1.5	---	---	---	---	1170.0
Curry	218.0	9.0	6.0	---	---	---	30.7	11346.4
De Baca	---	---	---	---	---	---	---	585.8
Guadalupe	---	---	3.2	---	---	---	---	165.1
Harding	---	---	2.9	---	---	---	---	432.5
Mora	---	---	1.1	---	---	---	---	555.7
Quay	---	10.0	---	---	---	---	---	3457.4
Roosevelt	---	2277.0	10.9	---	---	80.0	---	8397.0
San Miguel	---	---	2.0	---	---	---	---	267.4
Torrance	582.0	---	46.5	748.0	---	---	---	2305.8
Union	---	---	3.9	---	---	---	---	2395.5
NORTHEAST DISTRICT <sup>1/</sup>	895.5	2296.0	78.0	748.0	---	80.0	30.7	31179.1
Catron	---	---	---	---	---	---	---	39.7
Grant	---	---	---	---	---	---	102.0	475.3
Hidalgo	---	---	34.1	---	---	---	---	2267.2
Luna	---	---	34.9	---	61.0	---	---	6313.7
Sierra	---	---	1.0	---	---	---	7.8	450.3
Socorro	---	---	2.0	---	---	29.0	---	1342.2
						3/69.0		4/69.0
SOUTHWEST DISTRICT <sup>1/</sup>	---	---	72.0	2/ 1283.0	61.0	98.0	109.8	12240.4
Chaves	---	---	12.4	---	---	49.0	---	12064.7
Dona Ana	---	---	3.0	8133.0	265.0	2711.0	---	20253.3
Eddy	---	---	0.9	---	---	51.0	---	8856.5
Lea	---	29.0	---	---	---	171.0	---	5543.2
Lincoln	---	---	0.7	---	---	---	305.9	426.4
Otero	---	---	---	---	---	---	---	568.0
						4/ 40.9		4/ 40.9
SOUTHEAST DISTRICT <sup>1/</sup>	---	29.0	17.0	8133.0	265.0	2982.0	346.8	47753.0
STATE	1138.0	2325.0	203.0	10653.0	326.0	3291.0	1457.0	5/ 99986.0

<sup>1/</sup> For some crops, county values will not add to district totals. District totals include counties for which separate estimates were not made. <sup>2/</sup> Luna, Sierra, and Socorro. <sup>3/</sup> Luna and Sierra counties. <sup>4/</sup> Chaves, Dona Ana and Otero counties. <sup>5/</sup> Figures do not add to total due to rounding.



CROP VALUES: FARM VALUES OF PRODUCTION OF PRINCIPAL CROPS, BY COUNTIES, 1970 1/

County	Wheat	Sorghum for Grain	Corn for Grain	Barley	Cotton and Cottonseed	All Hay	Alfalfa Seed	Broomcorn
	1,000 Dollars	1,000 Dollars	1,000 Dollars	1,000 Dollars	1,000 Dollars	1,000 Dollars	1,000 Dollars	1,000 Dollars
Bernalillo	5.2	8.3	4.4	8.0	---	719.2	---	---
McKinley	6.4	2.3	47.9	0.3	---	132.7	---	---
Rio Arriba	62.8	---	13.2	3.4	---	726.3	---	---
Sandoval	2.5	---	41.2	---	---	478.0	---	---
San Juan	10.8	13.9	244.8	5.2	---	1463.5	---	---
Santa Fe	39.1	---	88.2	10.2	---	565.4	---	---
Taos	32.5	---	14.7	28.6	---	631.2	---	---
Valencia	10.7	12.6	33.5	18.9	---	2063.1	---	---
NORTHWEST DISTRICT 2/	170.0	37.1	487.9	74.6	---	6779.4	---	---
Colfax	62.8	2.6	41.2	9.3	---	1285.3	---	---
Curry	4401.8	7726.8	35.3	60.1	104.0	533.2	---	28.3
De Baca	7.5	97.4	3.8	8.6	8.6	594.0	---	---
Guadalupe	---	2.8	14.4	---	---	181.0	---	---
Harding	78.1	36.7	10.6	0.8	1.4	393.4	---	---
Mora	6.1	---	1.0	2.5	---	559.5	---	---
Quay	1441.3	1039.4	---	3.9	202.0	1174.3	---	341.9
Roosevelt	1053.0	3753.8	50.0	16.4	748.0	712.4	---	777.8
San Miguel	15.8	13.0	11.1	1.0	---	265.0	---	---
Torrance	56.5	10.3	174.6	29.4	---	771.6	---	---
Union	40.5	1140.3	377.0	---	---	754.5	---	---
NORTHEAST DISTRICT 2/	7163.4	13823.1	719.0	132.0	1064.0	7224.2	7.4	1148.0
Catron	1.1	---	1.6	---	---	35.3	---	---
Grant	5.1	140.3	17.6	5.0	14.5	200.0	---	---
Hidalgo	65.9	1131.0	6.6	33.5	720.8	272.7	---	---
Luna	19.4	2401.2	177.2	113.4	2799.5	228.9	---	---
Sierra	1.1	3.8	11.0	2.4	286.7	202.7	---	---
Socorro	3.0	39.4	55.0	1.4	165.5	1017.4	---	---
SOUTHWEST DISTRICT 2/	95.6	3715.7	269.0	155.7	3987.0	1957.0	4.5	---
Chaves	5.5	487.2	57.3	363.9	3396.7	6716.2	100.2	---
Dona Ana	6.3	229.7	22.1	180.2	7015.1	2604.9	61.7	---
Eddy	1.1	159.5	4.0	84.0	3304.9	4799.1	76.5	---
Lea	---	1737.7	2.9	10.9	1662.3	1783.1	4.7	---
Lincoln	---	2.9	6.7	---	---	147.9	---	---
Otero	10.1	106.1	5.1	6.7	181.0	352.2	---	---
SOUTHEAST DISTRICT 2/	23.0	2723.1	98.1	645.7	15560.0	16403.4	243.1	---
STATE	7452.0	20299.0	1574.0	1008.0	20611.0	32364.0	255.0	1148.0

CROP VALUE: FARM VALUES OF PRODUCTION OF PRINCIPAL CROP BY COUNTIES 1970 1/

County	Potatoes	Peanuts	Dry Beans	Early Spring and Early Fall Lettuce	Processing Tomatoes	Onions	Apples	Total
	1,000 Dollars	1,000 Dollars	1,000 Dollars	1,000 Dollars	1,000 Dollars	1,000 Dollars	1,000 Dollars	1,000 Dollars
Bernalillo	---	---	2.4	13.0	---	32.6	29.2	822.3
McKinley	---	---	13.8	---	---	---	---	203.4
Rio Arriba	---	---	0.2	---	---	---	259.7	1065.6
Sandoval	---	---	---	---	---	---	151.0	672.7
San Juan	47.0	---	4.7	---	---	---	304.6	2094.5
Santa Fe	219.0	---	1.9	---	---	24.5	174.1	1122.4
Taos	---	---	3.8	---	---	---	---	710.8
Valencia	---	---	1.8	150.0	---	56.6	25.4	2372.6
NORTHWEST DISTRICT 2/	305.0	---	28.6	163.0	---	113.7	944.0	9103.3
Colfax	---	---	1.8	---	---	---	---	1403.0
Curry	132.1	13.6	5.4	---	---	---	---	13040.6
De Baca	---	---	---	---	---	---	31.3	751.2
Guadalupe	---	---	3.3	---	---	---	---	201.5
Harding	---	---	2.7	---	---	---	---	523.7
Mora	---	---	1.7	---	---	---	---	570.8
Quay	---	13.5	7.7	---	---	---	---	4224.0
Roosevelt	---	2556.2	11.2	---	---	131.4	---	9810.2
San Miguel	---	---	2.9	---	---	---	---	308.8
Torrance	689.1	---	46.5	131.0	---	---	---	1909.0
Union	---	---	0.5	---	---	---	---	2312.8
NORTHEAST DISTRICT 2/	1196.0	2583.3	83.7	131.0	---	131.4	31.3	35437.8
Catron	---	---	---	---	---	---	---	38.0
Grant	---	---	---	---	---	---	102.2	484.7
Hidalgo	---	---	38.2	---	---	---	---	2268.7
Luna	---	3.1	24.2	---	170.0	---	---	5936.9
Sierra	---	---	1.4	---	---	---	13.2	522.3
Socorro	---	---	1.9	---	---	81.5	---	1365.1
						3/336.6		3/336.6
SOUTHWEST DISTRICT 2/	---	3.1	65.7	4/935.0	170.0	418.1	115.4	11891.8
Chaves	---	---	16.8	---	---	---	---	11143.8
Dona Ana	---	---	7.5	4341.0	68.0	2614.3	---	17150.8
Eddy	---	---	1.0	---	---	65.7	---	8495.8
Lea	---	46.6	---	---	---	203.8	---	5452.0
Lincoln	---	---	0.7	---	---	---	311.1	469.3
Otero	---	---	---	---	---	---	---	661.2
							5/29.2	5/29.2
SOUTHEAST DISTRICT 2/	---	46.6	26.0	4341.0	68.0	2883.8	340.3	43402.1
STATE	1501.0	2633.0	204.0	5570.0	238.0	3547.0	1431.0	99835.0

1/ Preliminary. 2/ For some crops, County Values will not add to district totals. District totals include counties for which separate estimates were not made. 3/ Luna and Sierra Counties. 4/ Luna, Sierra, and Socorro Counties. 5/ Chaves, Dona Ana, and Otero Counties.

LIVESTOCK INVENTORY VALUES: FARM INVENTORY VALUE OF SPECIFIED SPECIES OF LIVESTOCK BY COUNTIES, JANUARY 1, 1970

County	All cattle <sup>1/</sup>	Cows and heifers that have calved	Hogs <sup>2/</sup>	All sheep	Chickens	Total
---1,000 dollars---						
Bernalillo	3910.0	1748.0	21.0	159.8	273.6	4364.4
McKinley	3230.0	2052.0	12.0	2890.5	3.7	6136.2
Rio Arriba	5100.0	3401.0	6.0	904.8	5.4	6016.2
Sandoval	2720.0	1919.0	6.0	223.2	4.3	2953.5
San Juan	3570.0	2185.0	16.5	1788.4	8.2	5383.1
Santa Fe	4250.0	1900.0	12.0	18.8	7.0	4287.8
Taos	2040.0	1083.0	18.0	477.0	5.8	2540.8
Valencia	7990.0	5662.0	28.5	658.0	7.4	8683.9
NORTHWEST DISTRICT <sup>3/</sup>	32810.0	19950.0	120.0	7120.5	315.4	40365.9
Colfax	9520.0	5947.0	15.1	94.0	6.8	9635.9
Curry	11220.0	2736.0	75.3	56.4	15.2	11366.9
De Baca	5440.0	2945.0	24.1	524.0	3.0	5991.1
Guadalupe	5270.0	3439.0	6.0	1022.3	3.0	6301.3
Harding	6120.0	4389.0	3.0	21.2	2.5	6146.7
Mora	3570.0	2869.0	3.0	282.0	4.7	3859.7
Quay	11050.0	7543.0	117.4	79.9	11.3	11258.6
Roosevelt	12580.0	6612.0	255.9	94.0	24.6	12954.5
San Miguel	8840.0	6422.0	12.0	82.2	16.1	8950.3
Torrance	4250.0	3420.0	27.1	646.3	4.2	4927.6
Union	14110.0	7828.0	33.1	35.2	8.2	14186.5
NORTHEAST DISTRICT <sup>3/</sup>	91970.0	54150.0	572.0	2937.5	99.6	95579.1
Catron	7820.0	5662.0	4.5	---	4.5	7829.0
Grant	8500.0	6460.0	13.6	---	4.3	8517.9
Hidalgo	6970.0	4237.0	150.5	---	2.4	7122.9
Luna	6800.0	3192.0	40.7	---	4.2	6844.9
Sierra	4930.0	3173.0	54.2	---	5.4	4989.6
Socorro	9350.0	6916.0	7.5	---	3.2	9360.7
SOUTHWEST DISTRICT <sup>3/</sup>	44370.0	29640.0	271.0	423.0	24.0	45088.0
Chaves	28220.0	6004.0	219.8	3492.1	28.2	31960.1
Dona Ana	5100.0	2793.0	78.3	58.7	943.2	6180.2
Eddy	10540.0	6726.0	42.2	1236.1	60.0	11878.3
Lea	11560.0	8455.0	94.9	782.5	36.0	12473.4
Lincoln	5610.0	4180.0	10.6	3010.4	3.5	8634.5
Otero	5440.0	4332.0	36.2	538.2	4.1	6018.5
SOUTHEAST DISTRICT <sup>3/</sup>	66470.0	32490.0	482.0	9118.0	1075.0	77145.0
STATE	235620.0	136230.0	1445.0	19599.0	1514.0	258178.0

<sup>1/</sup> Includes milk cows.

<sup>2/</sup> December 1, 1969.

<sup>3/</sup> District total includes counties for which separate estimates were not made.

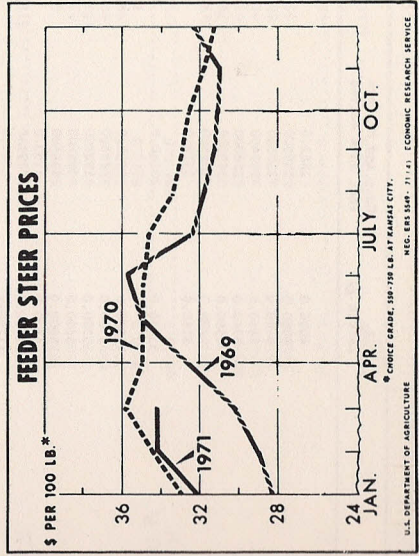
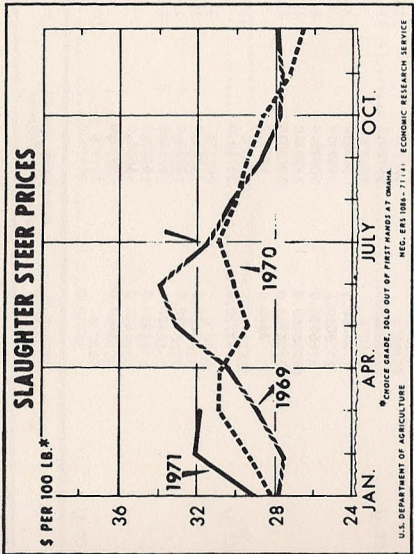
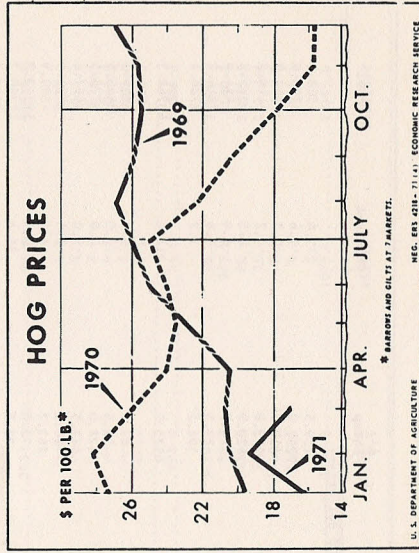
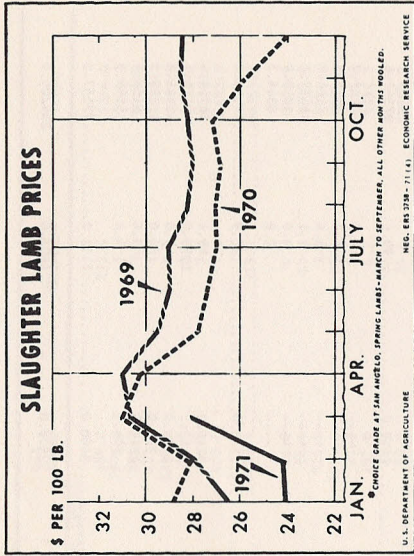
LIVESTOCK INVENTORY VALUES: FARM INVENTORY VALUE OF SPECIFIED SPECIES OF LIVESTOCK BY COUNTIES, JANUARY 1, 1971 <sup>1/</sup>

County	All cattle <sup>2/</sup>	Cows and heifers that have calved	Hogs <sup>3/</sup>	All Sheep	Chickens	Total
---1,000 dollars---						
Bernalillo	4080.0	1862.0	14.9	139.5	273.6	4508.0
McKinley	3060.0	1995.0	10.4	2700.0	3.6	5774.0
Rio Arriba	5440.0	3325.0	6.9	810.0	5.1	6262.0
Sandoval	2890.0	2014.0	5.8	213.8	4.2	3113.8
San Juan	3740.0	2280.0	14.9	1620.0	8.3	5383.2
Santa Fe	4590.0	2090.0	9.2	18.0	6.8	4624.0
Taos	1870.0	1045.0	13.8	427.5	5.6	2316.9
Valencia	8160.0	5529.0	23.0	596.2	7.2	8786.4
NORTHWEST DISTRICT <sup>4/</sup>	33830.0	20140.0	98.9	6525.0	314.4	40768.3
Colfax	9860.0	5966.0	13.8	87.8	6.7	9968.3
Curry	9520.0	2736.0	62.1	49.5	15.0	9646.6
De Baca	5270.0	2888.0	25.3	477.0	3.0	5775.3
Guadalupe	5610.0	3686.0	6.9	877.5	3.0	6497.4
Harding	6800.0	4446.0	3.4	20.2	2.5	6826.1
Mora	4420.0	2793.0	3.4	263.2	4.3	4690.9
Quay	11050.0	7771.0	110.4	72.0	10.9	11243.3
Roosevelt	11900.0	6764.0	248.4	85.5	26.4	12260.3
San Miguel	8840.0	6612.0	9.2	72.0	16.0	8937.2
Torrance	4080.0	3344.0	25.3	573.8	3.9	4683.0
Union	16490.0	7714.0	34.6	31.5	7.9	16564.0
NORTHEAST DISTRICT <sup>4/</sup>	93840.0	54720.0	542.8	2610.0	99.6	97092.4
Catron	7480.0	5605.0	3.4	---	4.3	7487.7
Grant	9010.0	6593.0	11.5	---	4.2	9025.7
Hidalgo	6970.0	3990.0	172.5	---	2.4	7144.9
Luna	6460.0	3002.0	23.0	---	4.1	6487.1
Sierra	4760.0	3230.0	46.0	---	4.9	4810.9
Socorro	8840.0	6840.0	5.8	---	2.9	8848.7
SOUTHWEST DISTRICT <sup>4/</sup>	43520.0	29260.0	262.2	383.0	22.8	44188.0
Chaves	22270.0	5966.0	225.4	3240.0	29.4	25764.8
Dona Ana	4930.0	2755.0	80.5	56.2	1050.0	6116.7
Eddy	11220.0	6251.0	36.8	1125.0	60.0	12441.8
Lea	11390.0	8360.0	94.3	720.0	24.0	12228.3
Lincoln	6630.0	4655.0	10.3	2812.5	3.6	9456.4
Otero	5610.0	3933.0	28.8	506.3	4.2	6149.3
SOUTHEAST DISTRICT <sup>4/</sup>	62050.0	31920.0	476.1	8460.0	1171.2	72157.3
STATE	233240.0	136040.0	1380.0	17978.0	1608.0	254206.0

<sup>1/</sup> Preliminary. <sup>2/</sup> Includes milk cows. <sup>3/</sup> December 1, 1970.

<sup>4/</sup> District total includes counties for which separate estimates were not made.

# New Mexico Agricultural Statistics



## NEW MEXICO CROP REPORTING DISTRICTS

