



NEW MEXICO AGRICULTURAL STATISTICS

1975

PERMANENT FILE
COPY # 1
PLEASE RETURN



VOLUME VII
Supplement III 1975

Radovich-62

NEW MEXICO AGRICULTURAL STATISTICS
1975

**Prepared & Issued
Cooperatively by**

UNITED STATES DEPARTMENT OF AGRICULTURE
NEW MEXICO CROP AND LIVESTOCK REPORTING SERVICE
STATISTICAL REPORTING SERVICE

P.O. Box 1809
Las Cruces, New Mexico 88001

Joe D. Herman, Statistician in Charge

&

NEW MEXICO DEPARTMENT OF AGRICULTURE
NEW MEXICO STATE UNIVERSITY

P.O. Box 3189
Las Cruces, New Mexico 88003

Dr. William P. Stephens, Director
William W. Wile, Statistician (State)

COVER PHOTOGRAPH: The Roadrunner is officially recognized as the State Bird.
PUBLISHED: July, 1976

TABLE OF CONTENTS

	Pages
FORWARD	2
ACKNOWLEDGEMENT	3
CLIMATOLOGICAL DATA	4
USUAL PLANTING AND HARVESTING DATES	5
CROP SUMMARY	6
PRINCIPAL CROPS	7
FARM INCOME	8
CASH RECEIPTS	10
NUMBER OF FARMS AND LAND IN FARMS	12
PRICES RECEIVED BY FARMERS AND RANCHERS	13
LIVESTOCK SUMMARY 1975	34
CHARTS AND GRAPHS	
FARM INCOME	
Realized Net Income of Farm Operators From Farming, 1963-1975	
New Mexico and United States	9
CASH RECEIPTS-NEW MEXICO	
Livestock and Crops, 1963-1975	11
PRICES RECEIVED FOR LIVESTOCK	
Cattle and Calves; 1969-1975	14
Sheep, Lambs, and Wool; 1969-1975	14
CATTLE	
Number Shipped Out of New Mexico by State of Destination-1975	42
Number Shipped Into New Mexico by State of Origin-1975	43
COMMODITY TABLES	
COTTON	16-17
GRAINS	
Grain Stocks	15
Barley	18-19
Corn	20-21
Sorghum	22-23
Wheat	24-25
HAYS	
Hay Stocks	15
All Hay	26
Alfalfa Hay	27
MISCELLANEOUS CROPS	
Peanuts	28
Irish Potatoes	28
FRUITS AND NUTS	
Apples	30
Pecans	31
VEGETABLES	
Lettuce-Early Spring	29
Lettuce-Early Fall	29
Tomatoes	29
Onions	30
Chili, Processing	31
LIVESTOCK	
Cattle and Calves	35-36, 44-45
Milk Cows & Milk	37, 44-45
Sheep	35-36, 38, 44-45
Cattle On Feed	37, 41
Slaughter	40
Sheep On Feed	35, 41
Wool	38
Bees & Honey	40
Hogs	35, 39, 44-45
Chickens & Eggs	35, 39, 44-45
CROP & LIVESTOCK VALUES	46-51

NEW MEXICO DEPARTMENT OF AGRICULTURE

OFFICE OF THE DIRECTOR
Box 3189/Las Cruces, New Mexico 88003
Telephone (505) 646-3007



During this bicentennial year, I would like to give special recognition to the New Mexico farmers and ranchers. The New Mexico Department of Agriculture's bicentennial theme for 1976, "Agriculture Made New Mexico Possible - 200 Years of Progress", is truly indicative of the importance of the agribusiness community in our state, as well as the entire nation. New Mexico is largely an agricultural state, and the farmers and ranchers have a justifiable claim to an esteem position and fair economic returns for their efforts.

As the most important industry in the world becomes more complex, with current and prospective energy shortages, detailed statistics such as those found in this publication provide farmers, ranchers and agribusiness with the data needed to make wise decisions. Your New Mexico Department of Agriculture is pleased to respond to the growing need for data by continuing the cooperative effort with the Statistical Reporting Service of the United States Department of Agriculture.

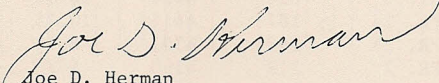
W.P. Stephens
William P. Stephens,
Director

UNITED STATES DEPARTMENT OF AGRICULTURE
STATISTICAL REPORTING SERVICE
P. O. Box 1809, Las Cruces, New Mexico 88001
Telephone: (505) 524-3648

American agriculture today provides nations throughout the world with a wide variety of top quality goods with greater efficiency than ever before. Modern agriculture demands that agricultural statistics be reliable and accurate, providing relevant, technical information to insure optimum utilization of all available resources.

This publication provides the New Mexico farmer and rancher with the needed data for making management decisions, the various government agencies with a basis for the formation of agricultural policies on both national and international levels, and the general public with reference material. Without the response from farmers, ranchers, and the entire agribusiness community in completing various survey questionnaires and providing related information, this publication could not contain such comprehensive and valuable data. The cooperation of all parties in providing this information is greatly appreciated.

This publication is a result of a cooperative effort of the New Mexico Department of Agriculture and the Statistical Reporting Service of the United States Department of Agriculture.


Joe D. Herman
Agricultural Statistician In Charge

NEW MEXICO AGRICULTURAL STATISTICS

CLIMATE OF NEW MEXICO

AVERAGE FIRST FALL AND LAST SPRING DATE OF 32°, DAYS BETWEEN DATES, RECORD AVERAGE, PRECIPITATION, 1975

COUNTY AND STATION	FREEZE DATA YEARS OF RECORD	AVERAGE FIRST FALL DATE OF 32 DEGREES	AVERAGE LAST SPRING DATE OF 32 DEGREES	AVERAGE NUMBER OF DAYS BETWEEN DATES	PRECIPITATION (IN INCHES)		
					ELE- VA- TION	AVERAGE 1941-1970	1975 <u>1/</u>
BERNALILLO ALBUQUERQUE							
AIRPORT	32	OCT. 30	APR. 14	201	5311	7.77	8.01
SANDOVAL JEMEZ SPRINGS	60	OCT. 20	MAY 1	173	6250	16.37	13.84
SAN JUAN FRUITLAND	58	OCT. 7	MAY 10	151	5145	7.64	8.41
AZTEC RUINS							
NATL. MONUMENT	59	OCT. 9	MAY 11	152	5640	9.54	6.57
SANTA FE SANTA FE COLLEGE	95	OCT. 13	MAY 6	161	7200	13.83	12.64
TAOS TAOS	70	OCT. 3	MAY 17	139	6945	12.64	11.81
VALENCIA LOS LUNAS	71	OCT. 18	APR. 24	177	4840	7.90	5.99
SAN FIDEL	45	OCT. 12	MAY 7	159	6160	9.56	8.84
COLFAX RATON	18	OCT. 6	MAY 11	152	6933	16.34	12.78
SPRINGER	75	OCT. 5	MAY 8	150	5857	15.91	13.04
CURRY CLOVIS	58	OCT. 28	APR. 15	196	4280	17.07	10.25
MELROSE	29	OCT. 22	APR. 18	187	4599	15.17	14.97
DE BACA FT. SUMNER	59	OCT. 23	APR. 18	188	4030	12.99	10.28
ALAMOGORDO DAM	33	OCT. 28	APR. 15	197	4306	12.44	-----
GUADALUPE SANTA ROSA	61	OCT. 25	APR. 17	191	4620	13.60	12.05
QUAY TUCUMCARI	66	OCT. 26	APR. 15	195	4096	15.09	10.72
SAN JON	64	OCT. 25	APR. 22	186	4230	15.68	13.99
ROOSEVELT PORTALES	59	OCT. 19	APR. 23	179	4010	16.23	13.88
ELIDA	31	OCT. 25	APR. 15	192	4345	14.38	11.86
SAN MIGUEL LAS VEGAS AIRPORT	31	OCT. 8	MAY 13	150	6857	15.28	16.09
BELL RANCH	67	OCT. 22	APR. 22	184	4500	14.48	14.76
TORRANCE ESTANCIA	51	OCT. 1	MAY 20	134	6107	11.18	11.61
UNION CLAYTON	65	OCT. 20	APR. 27	176	4970	15.91	13.30
DES MOINES	55	OCT. 3	MAY 15	143	6632	18.27	14.55
CATRON QUEMADO	41	SEPT. 24	JUNE 8	108	6879	9.24	11.92
GRANT FT. BAYARD	73	OCT. 24	APR. 28	179	6142	13.99	18.75
HACHITA	53	NOV. 3	APR. 15	203	4495	9.43	8.63
HIDALGO LORDSBURG	44	NOV. 4	APR. 6	214	4250	10.32	11.72
ANIMAS	43	OCT. 28	APR. 24	187	4415	10.35	12.57
LUNA DEMING AIRPORT	10	OCT. 28	APR. 25	188	4301	8.56	8.07
SIERRA CABALLO DAM	35	NOV. 4	APR. 7	212	4190	8.23	11.99
WINSTON	25	OCT. 7	MAY 15	147	6200	11.59	17.36
HILLSBORO	29	OCT. 26	APR. 18	193	5270	10.80	17.24
SOCORRO SOCORRO	75	OCT. 24	APR. 13	195	4585	7.90	10.48
AUGUSTINE	40	SEPT. 26	MAY 31	119	7020	9.07	10.84
CHAVES ROSWELL	78	OCT. 29	APR. 8	204	3636	10.61	9.59
ELK	60	OCT. 16	APR. 30	169	5700	15.34	14.99
DONA ANA STATE UNIVERSITY	80	OCT. 28	APR. 9	202	3881	7.89	8.08
HATCH	58	OCT. 24	APR. 12	196	4052	8.87	13.49
EDDY CARLSBAD	75	NOV. 5	APR. 2	217	3120	11.91	10.22
ARTESIA	63	OCT. 28	APR. 12	199	3320	10.44	7.84
LEA HOBBS	52	NOV. 4	APR. 8	210	3615	14.36	18.93
JAL	30	NOV. 3	APR. 2	215	3150	11.67	13.68
LINCOLN CARRIZOZO	73	OCT. 7	MAY 7	153	6220	13.71	11.37
CORONA	58	OCT. 13	MAY 6	161	6664	14.96	10.23
OTERO ALAMOGORDO	53	NOV. 5	APR. 6	213	4350	10.17	11.13

1/ PRELIMINARY.

SOURCE: NATIONAL OCEANIC AND ATMOSPHERIC ADMINISTRATION, NATIONAL WEATHER SERVICE OFFICE FOR STATE CLIMATOLOGY.

USUAL PLANTING AND HARVESTING DATES

CROP	1974 HARVESTED ACREAGE	USUAL PLANTING DATES	USUAL HARVESTING DATES			PRINCIPAL COUNTIES
			BEGINS	MOST ACTIVE	ENDS	
(1,000 ACRES)						
BARLEY						
FALL SOWN	23	SEPT. 15-NOV. 1	JUNE 10	JUNE 15-JULY 10	JULY 20	CHAVES-DONA ANA-EDDY
SPRING SOWN		FEB. 15-APR. 1	JUNE 15	JUNE 20-JULY 15	AUG. 1	CHAVES-DONA ANA-EDDY
BROOMCORN	4.5	MAY 20-JULY 1	AUG. 20	SEPT. 10-OCT. 10	NOV. 1	ROOSEVELT
CORN, ALL	50	APR. 15-JUNE 8	SEPT. 10	OCT. 10-NOV. 1	DEC. 1	SAN JUAN-SANTA FE-TORRANCE-CURRY
COTTON	144.0	APR. 1-MAY 15	SEPT. 10	OCT. 15-NOV. 15	DEC. 15	CHAVES-DONA ANA-EDDY
HAY, ALFALFA	276		MAY 1		OCT. 20	CHAVES-DONA ANA-EDDY
PEANUTS FOR NUTS	7.7	MAY 10-JUNE 1	OCT. 10	OCT. 10-OCT. 25	NOV. 10	ROOSEVELT
SORGHUM						
GRAIN	363	MAY 10-JULY 10	OCT. 1	OCT. 10-NOV. 10	DEC. 1	CURRY-ROOSEVELT-LEA
SILAGE	6	MAY 10-JULY 10	AUG. 15	SEPT. 5-OCT. 1	OCT. 20	CURRY-ROOSEVELT-LEA
SUGAR BEETS	.8	FEB. 1-MAR. 15	NOV. 1	NOV. 10-DEC. 1	DEC. 15	CURRY
WHEAT, WINTER	289	SEPT. 1-OCT. 20	JUNE 5	JUNE 15-JULY 5	JULY 20	CURRY-QUAY-ROOSEVELT
VEGETABLES:						
LETTUCE						
SPRING	1.2	JAN. 15-FEB. 1	APR. 25	MAY 1-MAY 31	JUNE 5	DONA ANA-SIERRA-LUNA
FALL	4.4	AUG. 1-AUG. 15	OCT. 5	OCT. 10-NOV. 10	NOV. 15	DONA ANA-SIERRA-LUNA
		MAY 15-AUG. 1	AUG. 15	SEPT. 15-NOV. 1	OCT. 15	TORRANCE-VALENCIA
ONIONS						
GRANO	3.0	OCT. 1-OCT. 15	MAY 25	JUNE 1-JULY 15	JULY 25	LEA-DONA ANA-LUNA-
SWEET SPANISH		FEB. 1-MAR. 1	JULY 10	JULY 15-SEPT. 10	OCT. 10	HIDALGO
TOMATOES, ALL	.6	MAR. 15-MAY 20	SEPT. 1	SEPT. 1-OCT. 31	NOV. 1	LUNA-DONA ANA
POTATOES	3.2	APR. 20-JUNE 15	JULY 25	AUG. 20-OCT. 20	NOV. 15	SANTA FE-TORRANCE
		MAR. 15-APR. 1	MAY 15	JUNE 1-JULY 1	JULY 10	CURRY-ROOSEVELT
FRUIT:						
APPLES						
NORTH	---		AUG. 15	SEPT. 5-OCT. 20	OCT. 30	SAN JUAN-RIO ARRIBA- BERNALILLO-SANDOVAL-
SOUTH	---		AUG. 15	AUG. 30-OCT. 15	OCT. 30	SANTA FE LINCOLN-OTERO- DE BACA
NUTS:						
PECANS	---		NOV. 1	NOV. 15-DEC. 31	JAN. 1	CHAVES-DONA ANA-EDDY

ANNUAL CROP SUMMARY - 1975

The spring of 1975 consisted of unusually cool weather which adversely affected spring planted crop growth in New Mexico. However, moisture supplies were plentiful, which allowed for large increases in the dryland harvested acreage and production when compared to 1974. Cash receipts from crop marketings totaled 177.4 million dollars, which represented a 14 percent increase from the 1974 crop cash receipts. The primary reason for the increased cash receipts was the larger acreage harvested and the increased yields for most crops. Farm numbers in New Mexico estimated at 11,800 accounted for 47.2 million acres in 1975, which was the same as in 1974.

All cotton production totaled 73,100 bales in 1975. This was a decrease from the 160,600 bales produced in 1974. The total cotton harvested acres was 97,500 in 1975, compared to 154,500 acres harvested during the previous year. The Upland cotton yield was 382 pounds per harvested acre, down from the 509 pounds per harvested acre realized a year earlier. American Pima cotton yield averaged 195 pounds compared to the 417 pounds per harvested acre in 1974.

Sorghum grain production totaled 15,500,000 bushels in 1975, which was a 41 percent increase from the 11,000,000 bushels produced in 1974. The 1975 harvested acreage totaled 310,000 acres, with an average combined yield per harvested acre of 50 bushels. The 1974 acreage harvested was 220,000 acres, with the same yield of 50 bushels per harvested acre.

All hay production in 1975 was estimated at 963,000 tons, an increase from the 915,000 tons produced in 1974. The yield per acre averaged 3.54 tons, compared to 3.45 tons the previous year. Acres harvested totaled 272,000 acres and 265,000 acres in 1975 and 1974 respectively. Alfalfa hay production accounted for 864,000 tons, or 90 percent of the total of all hay production. The alfalfa hay average yield of 4.3 tons per acre was at the same level as the 1974 yield.

Wheat production in New Mexico was a record 10,062,000 bushels in 1975. This represented a 245 percent increase from the drought stricken 1974 crop. The harvested acreage of 387,000 acres was also a large increase from the 162,000 acres harvested the previous year. The average combined yield was 26 bushels per harvested acre in 1975, compared to 18 bushels per harvested acre in 1974.

Barley grain production also set a State record of 1,624,000 bushels, a 73 percent increase from the 940,000 bushels produced in 1974. The 28,000 acres harvested was also an increase from the 20,000 acres harvested in 1974. The 1975 yield per harvested acre, at 58 bushels, represented an 11 bushel increase from the 47 bushels harvested acre realized in 1974.

Corn for grain produced in 1975 set another record for New Mexico. The production of 7,000,000 bushels represented a 122 percent increase from the 1974 production of 3,157,000 bushels. Harvested acres in 1975 totaled 70,000 acres with an average yield of 100 bushels per acre. This compared with 41,000 acres harvested the previous year and an average yield of 77 bushels per acre.

Apple production in 1975 was estimated at 11 million pounds, compared to 6 million pounds produced in 1974. Pecan production, at 10 million pounds, represented a 24 percent decrease from the 13,200,000 pounds produced a year earlier. Peanut production increased to 20,152,000 pounds from the 13,034,000 pounds produced in 1974. The average yield was 2,290 pounds per harvested acre in 1975, with 8,800 acres harvested. This compares to an average yield of 1,715 pounds per harvested acre in 1974 and 7,600 acres harvested. Potato production in 1975 totaled 700,000 hundredweight, a decrease from the 840,000 hundredweight produced in 1974. There were 3,500 acres harvested in 1975, with an average yield of 200 hundredweight per acre, compared to the 4,200 acres harvested and the same yield for the previous year.

PRINCIPAL CROPS: ACREAGE, YIELD, PRODUCTION, PRICE, VALUE, ANNUAL 1974-1975

COMMODITY	UNIT	ACREAGE HARVESTED		YIELD PER ACRE		PRODUCTION		SEASON AVERAGE PRICE		VALUE OF PRODUCTION	
		1974	1975 ^{1/}	1974	1975 ^{1/}	1974	1975 ^{1/}	1974	1975 ^{1/}	1974	1975 ^{1/}
		---1,000 ACRES---		-SEE UNIT COLUMN-		-----1,000-----		-----DOLLARS-----		--1,000 DOLLARS--	
GENERAL CROPS											
CORN FOR GRAIN	BU.	41	70	77.0	100.0	3157	7000	3.07	2.55	9692	17850
CORN FOR SILAGE	TONS	28	24	15.0	16.5	420	396	----	----	----	----
CORN FOR FORAGE	TONS	4	4	----	----	----	----	----	----	----	----
ALL WHEAT	BU.	162	387	18.0	26.0	2916	10062	4.00	3.60	11664	36223
BARLEY	BU.	20	28	47.0	58.0	940	1624	2.30	2.25	2162	3654
SORGHUM GRAIN	BU.	220	310	50.0	50.0	11000	15500	3.09	2.46	33990	38130
SORGHUM SILAGE	TONS	2	2	12.0	11.0	24	22	----	----	----	----
SORGHUM FORAGE	TONS	57	31	----	----	----	----	----	----	----	----
BROOMCORN	TONS	1.8	2/	120	2/	0.1	2/	800.00	2/	80	2/
UPLAND COTTON	LBS.	140	85	509	382	^{3/} 148	^{3/} 68	.445	^{4/} .515	31702	^{4/} 16738
AMERICAN PIMA COTTON	LBS.	14.5	12.5	417	195	^{3/} 12.6	^{3/} 5.1	.655	^{4/} .775	3961	^{4/} 1890
COTTONSEED	TONS	----	----	----	----	60	28.3	146.00	98.00	8760	2646
POTATOES	CWT.	4.2	3.5	200	200	840	700	2.95	2.85	2478	1995
PEANUTS	LBS.	7.6	8.7	1715	2200	13034	20152	.180	.220	2346	4433
SUGAR BEETS	TONS	.4	.9	19.8	18.3	8	16	----	----	----	----
HAY CROPS											
ALL HAY	TONS	265	272	3.45	3.54	915	963	58.50	54.00	53528	52002
ALFALFA HAY	TONS	197	201	4.30	4.30	847	864	----	----	----	----
ALL OTHER HAY	TONS	68	71	1.00	1.40	68	99	----	----	----	----
FRUIT AND NUTS											
PECANS, IMPROVED	LBS.	----	----	----	----	13200	^{4/} 10000	.510	^{4/} .620	6732	^{4/} 6200
APPLES	LBS.	----	----	----	----	5000	10000	.098	.123	490	1230
COMMERCIAL VEGETABLES											
LETTUCE, SPRING	CWT.	1.3	1.2	195.0	135.0	254	162	9.33	5.78	2370	936
LETTUCE, FALL	CWT.	3.2	3.5	220.0	215.0	704	753	10.60	8.55	7462	6438
ONIONS, SUMMER	CWT.	3.3	3.0	340.0	335.0	1122	1005	6.54	15.70	7338	15779
TOMATOES FOR PROCES- SING	TONS	.6	8.6	12.0	10.0	7.2	8.6	70.00	70.00	504	602

^{1/} PRELIMINARY.
^{2/} ESTIMATES DISCONTINUED AFTER 1974.
^{3/} 480 POUND NET WEIGHT BALES
^{4/} ESTIMATES AS OF JANUARY, 1976. SUBJECT TO REVISION IN JULY, 1976.

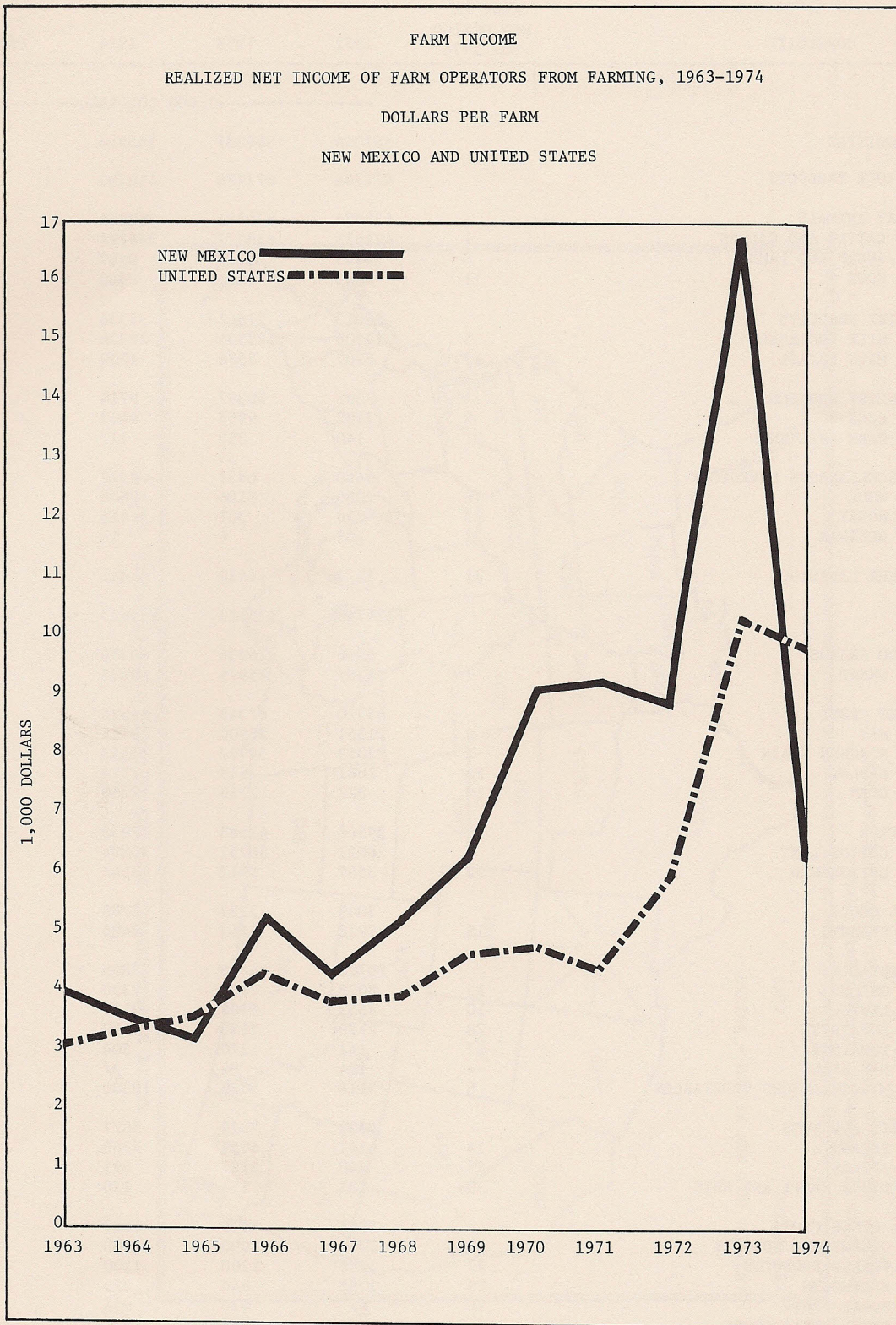
FARM INCOME

REALIZED GROSS INCOME AND NET INCOME FROM FARMING, 1949-1975 ^{1/}

YEAR	REALIZED GROSS FARM INCOME					FARM PRODUCTION EXPENSES	REALIZED NET FARM INCOME ^{2/}	NET CHANGE IN FARM INVENTORIES	TOTAL NET FARM INCOME ^{2/}
	CASH RECEIPTS FROM FARM MARKETINGS	GOVERNMENT PAYMENTS	NON- MONEY INCOME	OTHER FARM INCOME	TOTAL				
-----MILLION DOLLARS-----									
1949.....	199.3	1.1	16.9	---	217.3	121.0	96.3	.2	96.5
1950.....	213.1	2.4	16.5	.1	232.1	142.0	90.1	-8.8	81.3
1951.....	243.9	2.9	18.4	.1	265.3	165.6	99.7	19.0	118.7
1952.....	216.7	1.7	19.7	.1	238.4	165.3	73.1	9.9	83.0
1953.....	192.7	1.2	18.9	.2	212.9	151.1	61.8	-16.1	45.7
1954.....	187.7	2.8	16.8	.2	207.5	140.6	66.9	-4.2	62.7
1955.....	163.7	2.1	16.5	.3	182.6	148.4	34.2	14.4	48.6
1956.....	199.4	5.7	14.5	.4	220.0	147.1	72.9	-23.1	49.7
1957.....	191.9	15.0	13.0	.6	220.4	152.3	68.1	-.3	67.8
1958.....	229.3	13.3	13.8	1.0	257.4	184.1	73.3	23.1	96.4
1959.....	259.2	14.9	12.6	1.2	287.8	195.5	92.3	-6.4	85.9
1960.....	233.0	11.2	13.2	1.2	258.6	187.7	70.9	.3	71.2
1961.....	244.6	14.1	14.8	1.2	274.7	208.9	65.8	18.0	83.8
1962.....	275.2	15.0	15.7	1.3	307.2	225.7	81.5	-7.6	73.9
1963.....	279.1	15.5	17.2	1.5	313.4	248.5	64.9	6.1	71.0
1964.....	237.2	18.7	17.6	1.9	275.4	221.2	54.2	-8.0	46.3
1965.....	262.2	22.3	18.3	2.3	305.1	256.8	48.3	7.7	56.0
1966.....	313.0	37.5	20.3	2.6	373.4	295.5	77.9	6.2	84.1
1967.....	336.2	33.3	21.5	3.1	394.1	332.5	61.5	8.5	70.0
1968.....	344.8	36.0	22.2	3.5	406.4	335.9	70.6	10.5	81.1
1969.....	397.4	41.6	28.7	3.9	471.6	389.6	82.0	6.4	88.4
1970.....	454.6	43.1	24.9	3.9	526.5	413.6	112.9	-3.0	109.9
1971.....	478.5	34.1	27.8	4.5	544.8	433.6	111.7	-3.2	108.5
1972.....	587.0	42.5	29.1	4.7	663.3	556.9	106.5	13.5	120.0
1973.....	846.9	29.4	31.9	5.6	913.7	716.6	197.2	-5.2	191.9
1974 ^{3/}	565.9	13.3	42.4	6.1	627.7	552.1	75.6	18.2	93.8
1975 ^{3/}	636.3	---	---	---	---	---	---	---	---

^{1/} DETAILS MAY NOT ADD TO TOTALS DUE TO ROUNDING. ^{2/} OF FARM OPERATORS. ^{3/} PRELIMINARY.

SOURCE: USDA, ECONOMICS RESEARCH SERVICE, FARM INCOME, FIS-224, SEPTEMBER, 1974; STATE FARM INCOME STATISTICS, BULLETIN NUMBER 547, SEPTEMBER, 1975.



SOURCE: USDA, ECONOMICS RESEARCH SERVICE, STATE FARM INCOME STATISTICS, BULLETIN 547, SEPTEMBER, 1975

NEW MEXICO AGRICULTURAL STATISTICS

CASH RECEIPTS BY COMMODITIES AND GROUPS: 1972 - 1975

COMMODITY	RANK IN NEW MEXICO FOR 1974	1972	1973	1974	1975 <u>1/</u> <u>2/</u>
-----1,000 DOLLARS-----					
ALL COMMODITIES		587044	846887	565916	636300
LIVESTOCK PRODUCTS		472304	671776	410293	458900
MEAT ANIMALS		435526	626881	362921	-----
CATTLE AND CALVES	1	424671	610577	344194	-----
SHEEP AND LAMBS	8	4943	8803	9787	-----
HOGS	11	4943	7501	8940	-----
DAIRY PRODUCTS		26013	27661	32336	-----
MILK WHOLESALE	5	19106	522135	28336	-----
MILK RETAIL	15	6907	5526	4000	-----
POULTRY AND EGGS		7305	10397	9714	-----
EGGS	9	7102	9958	9443	-----
FARM CHICKENS	31	140	353	117	-----
MISCELLANEOUS LIVESTOCK		3460	6837	5322	-----
WOOL	16	2086	5186	3606	-----
HONEY	28	256	301	414	-----
BEESWAX	32	7	6	14	-----
OTHER LIVESTOCK	21	1174	1430	1442	-----
CROPS		114740	175111	155623	177400
FOOD GRAINS		6366	26036	10254	-----
WHEAT	7	6307	25975	10185	-----
FEED CROPS		45310	67348	64526	-----
HAY	4	21351	28900	29517	-----
SORGHUM GRAIN	2	22019	34997	31558	-----
BARLEY	23	1061	1619	1114	-----
CORN	19	822	1765	2260	-----
COTTON		29568	41563	37938	-----
COTTON LINT	3	26001	36751	30394	-----
COTTONSEED	12	3567	5312	7544	-----
OIL CROPS		3049	3332	2786	-----
PEANUTS	18	2916	3163	2486	-----
VEGETABLES		20708	24658	28805	-----
ONIONS	13	8078	7726	7338	-----
LETTUCE	10	4531	8905	9133	-----
POTATOES	20	2720	2635	1530	-----
TOMATOES	27	141	270	504	-----
DRY BEANS	--	124	96	3/	-----
MISCELLANEOUS VEGETABLES	6	5114	5026	10300	-----
FRUIT AND NUTS		4832	7329	5627	-----
PECANS	14	4261	4051	4766	-----
APPLES	25	440	3127	691	-----
OTHER FRUIT AND NUTS	30	131	151	170	-----
ALL OTHER CROPS		4907	4845	5687	-----
GREENHOUSE NURSERY	17	2000	2000	3000	-----
FOREST PRODUCTS	22	1200	1200	1200	-----
BROOMCORN	29	1082	644	279	-----
SUGAR BEETS	26	4/	470	654	-----
OTHER FIELD CROPS	24	874	828	1000	-----

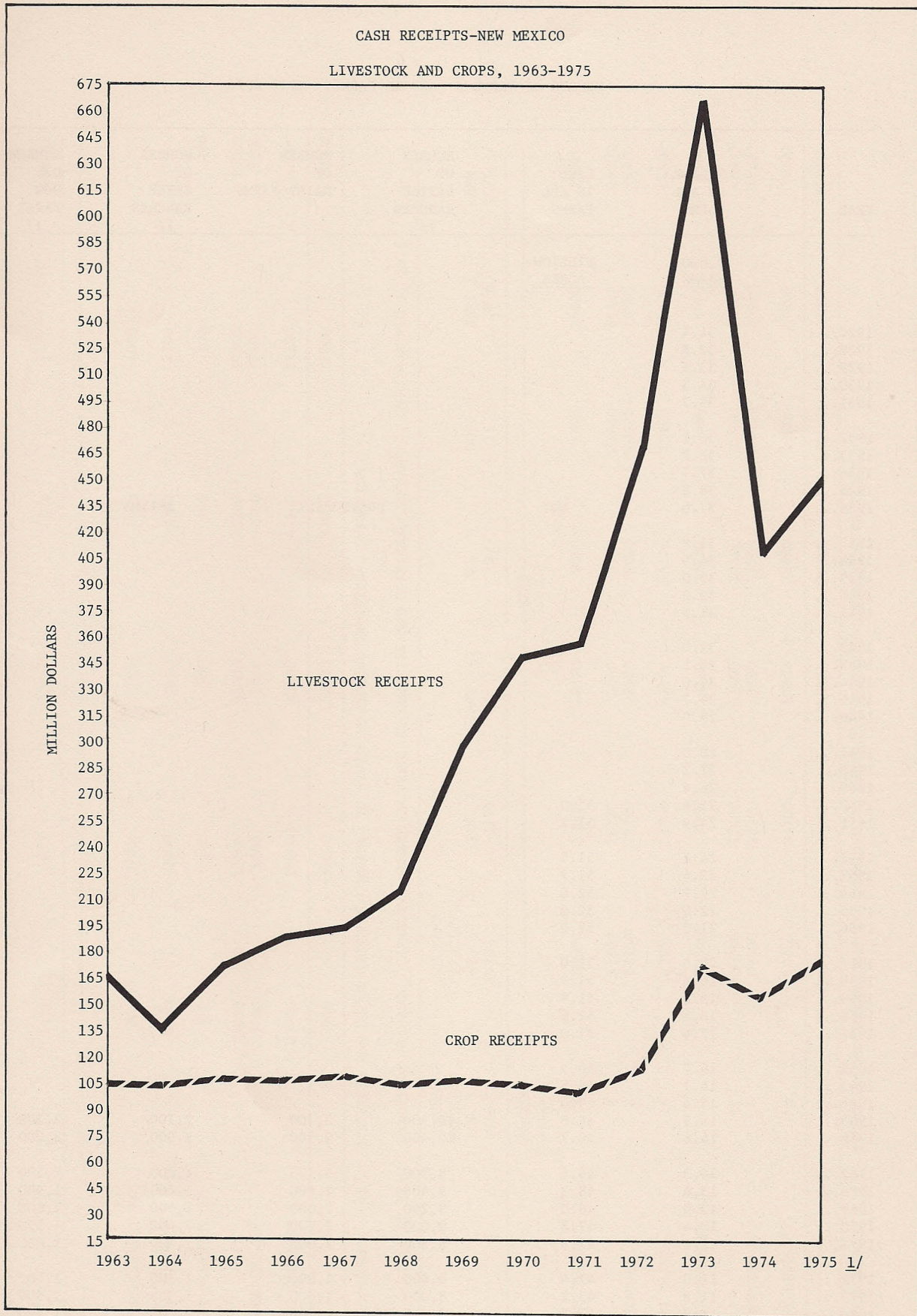
1/ PRELIMINARY. - ADDITIONAL CASH RECEIPTS DATA FOR 1975 AVAILABLE AUGUST, 1976.

2/ SUBJECT TO REVISION AUGUST, 1976.

3/ INCLUDED IN MISCELLANEOUS VEGETABLES.

4/ INCLUDED IN OTHER FIELD CROPS.

SOURCE: USDA, ECONOMIC RESEARCH SERVICE, FARM INCOME, FIS-224, SEPTEMBER, 1975, FIS-225, FEBRUARY, 1976.



1/ PRELIMINARY.
SOURCE: USDA, ECONOMICS RESEARCH SERVICE, FARM INCOME, FIS 224, SEPTEMBER, 1974;
STATE FARM INCOME STATISTICS, BULLETIN NUMBER 547, SEPTEMBER, 1975.

NEW MEXICO AGRICULTURAL STATISTICS

NUMBER OF FARMS & LAND IN FARMS: 1927-1976

YEAR	NUMBER OF ALL FARMS	LAND IN ALL FARMS	NUMBER OF CATTLE RANCHES 1/	NUMBER OF DAIRY FARMS 1/	NUMBER OF SHEEP RANCHES 1/	NUMBER OF HOG FARMS 1/
	1,000 FARMS	MILLION ACRES				
1927...	34.4					
1928...	32.8					
1929...	33.5					
1930...	34.5					
1931...	35.7					
1932...	36.1					
1933...	36.7					
1934...	37.7					
1935...	38.8					
1936...	37.0	NOT	PREVIOUSLY	ESTIMATED		
1937...	35.8					
1938...	34.5					
1939...	33.0					
1940...	32.0					
1941...	31.5					
1942...	31.0					
1943...	30.5					
1944...	30.0					
1945...	29.7					
1946...	29.0					
1947...	28.0					
1948...	27.2					
1949...	26.4					
1950...	25.6	51.0				
1951...	24.9	51.2				
1952...	24.1	51.5				
1953...	23.4	51.7				
1954...	22.7	52.0				
1955...	22.0	52.0				
1956...	21.3	52.0				
1957...	20.5	52.0				
1958...	19.8	51.9				
1959...	19.0	51.9				
1960...	18.2	51.5				
1961...	17.4	51.0				
1962...	16.7	50.5				
1963...	16.1	49.5				
1964...	15.4	49.0				
1965...	14.9	48.8	10,900	3,700	2,100	2,300
1966...	14.6	48.7	10,400	3,500	1,900	2,200
1967...	14.3	48.6	9,900	3,100	1,800	2,100
1968...	13.6	48.3	9,400	2,800	1,600	1,900
1969...	13.0	48.0	9,200	2,500	1,500	1,600
1970...	12.4	47.8	9,000	2,200	1,400	1,500
1971...	12.2	47.6	8,800	2,000	1,300	1,600
1972...	12.0	47.4	8,600	1,900	1,300	1,500
1973...	11.8	47.2	8,000	1,500	1,300	1,500
1974...	11.8	47.2	8,500	1,500	1,200	1,700
1975...	11.8	47.2	8,000	1,500	1,200	1,700
1976...	2/ 11.7	47.1	NA	NA	NA	NA

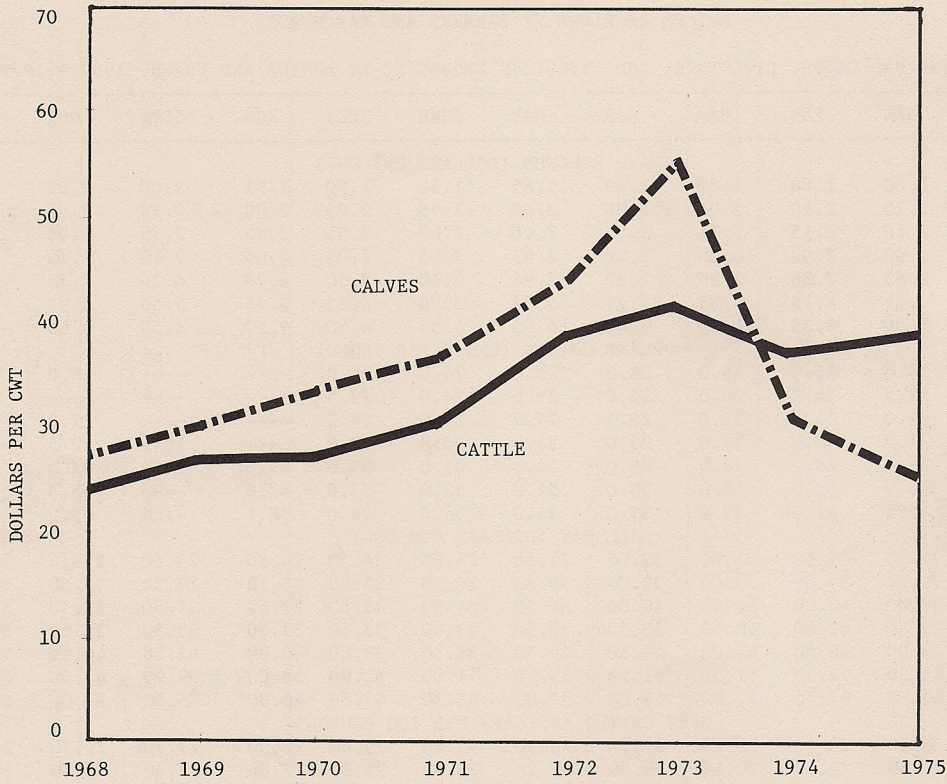
NA: NOT AVAILABLE

1/ INCLUDES FARMS AND RANCHES HAVING ONE OR MORE ANIMALS

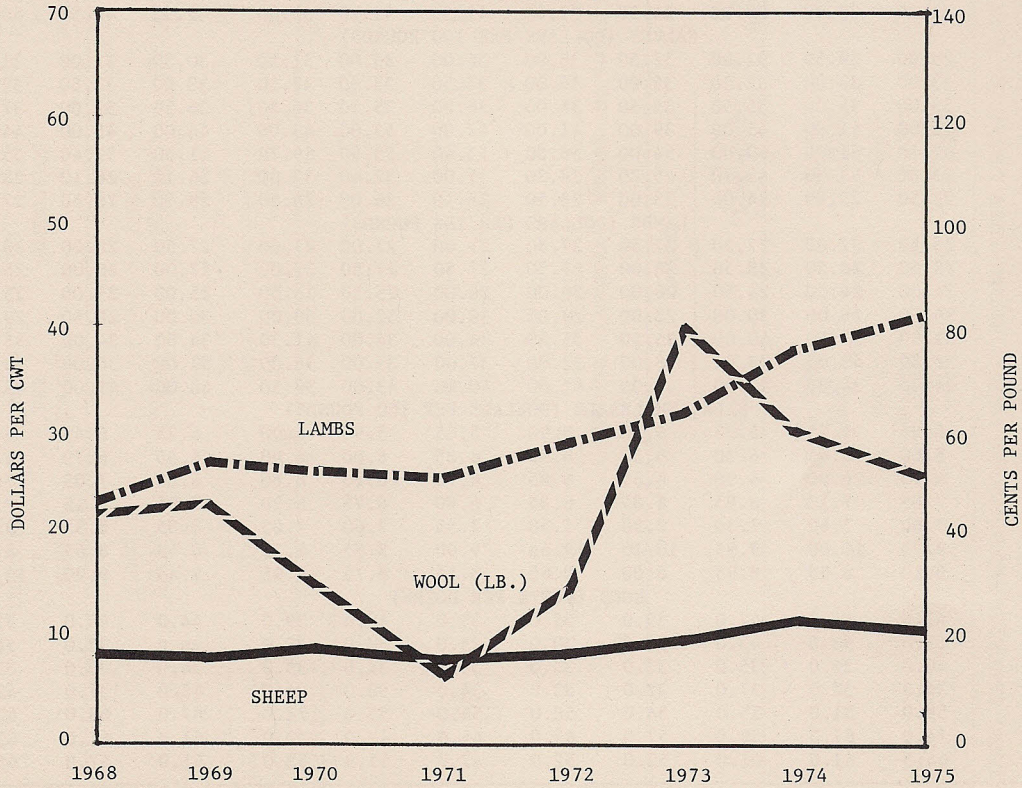
2/ PRELIMINARY

NEW MEXICO AGRICULTURAL STATISTICS

PRICES RECEIVED FOR CATTLE AND CALVES: 1968-1975
NEW MEXICO
(ANNUAL AVERAGES)



PRICES RECEIVED FOR SHEEP, LAMBS AND WOOL: 1968-1975
NEW MEXICO
(ANNUAL AVERAGES)



GRAIN STOCKS: QUANTITIES STORED ON AND OFF FARMS, 1972-1976

YEAR	ON FARMS				OFF FARMS			
	JAN. 1	APR. 1	JULY 1	OCT. 1	JAN. 1	APR. 1	JULY 1	OCT. 1
-----1,0000 BUSHEL-----								
<u>SORGHUM</u>								
1972. . . .	8190	3685	1433	819	7623	5674	3156	940
1973. . . .	4054	1931	772	97	6470	4412	1937	756
1974. . . .	3332	1176	490	196	7945	4370	2/	640
1975. . . . 3/	1100	220	110	11	4337	3318	1706	497
1976 1/ . .	3100	2170	----	----	4758	3206	----	----
<u>WHEAT</u>								
1972. . . .	269	154	58	347	2707	2367	2147	2648
1973. . . .	217	87	22	512	2129	1320	2/	2307
1974. . . .	426	341	171	3/ 233	732	303	119	919
1975. . . . 3/	175	117	29	1107	546	419	2/	2321
1976 1/ . .	906	201	----	----	1934	1603	----	----
<u>BARLEY</u>								
1972. . . .	94	78	24	210	68	49	25	104
1973. . . .	143	101	50	312	67	41	15	481
1974. . . .	156	109	62	235	134	91	70	216
1975. . . .	113	94	56	487	103	58	2/	103
1976 1/ . .	260	211	----	----	85	44	----	----
<u>CORN</u>								
1972. . . .	561	299	150	75	85	68	56	2/
1973. . . .	977	473	205	95	42	2/	2/	2/
1974. . . .	875	525	228	88	2/	2/	2/	9
1975. . . . 3/	1421	631	284	126	2/	2/	111	----
1976 1/ . .	2800	855	----	----	1521	2/	----	----

1/ PRELIMINARY.
 2/ NOT SHOWN TO AVOID DISCLOSING INDIVIDUAL OPERATIONS.
 3/ REVISED.

HAY STOCKS: QUANTITIES STORED ON FARMS, 1973, 1974, 1975 AND 1976

1973		1974		1975		1976	
JAN. 1	MAY 1	JAN. 1	MAY 1	JAN. 1	MAY 1	JAN. 1	MAY 1
-----1,000 TONS-----							
326	112	300	80	339	73	260	77

1/ PRELIMINARY.

UPLAND COTTON: ACREAGE, YIELD, AND PRODUCTION BY COUNTIES, IRRIGATED AND NON-IRRIGATED, 1974

COUNTY	ACRES PLANTED			ACRES HARVESTED			YIELD PER HARVESTED ACRE			PRODUCTION 480 LB. NET WT. BALES		
	IRRIG.	NON-IRRIG.	TOTAL	IRRIG.	NON-IRRIG.	TOTAL	IRRIG.	NON-IRRIG.	TOTAL	IRRIG.	NON-IRRIG.	TOTAL
	ACRES	ACRES	ACRES	ACRES	ACRES	ACRES	POUNDS	POUNDS	POUNDS	BALES	BALES	BALES
CURRY	750	0	750	620	0	620	256	0	256	330	0	330
DE BACA	320	0	320	170	0	170	335	0	335	120	0	120
QUAY	1720	0	1720	1640	0	1640	441	0	441	1500	0	1500
ROOSEVELT	12900	1000	13900	8850	0	8850	298	0	298	5450	0	5450
NORTHEAST DISTRICT	15690	1000	16690	11280	0	11280	317	0	317	7400	0	7400
GRANT	660	0	660	650	0	650	569	0	569	750	0	750
HIDALGO	5600	0	5600	5350	0	5350	585	0	585	6500	0	6500
LUNA	16400	0	16400	16250	0	16250	635	0	635	21400	0	21400
SIERRA	1620	0	1620	1570	0	1570	590	0	590	1900	0	1900
SOUTHWEST DISTRICT	24280	0	24280	23820	0	23820	619	0	619	30550	0	30550
CHAVES	29300	0	29300	29000	0	29000	496	0	496	29900	0	29900
DONA ANA	32200	0	32200	31900	0	31900	645	0	645	42800	0	42800
EDDY	23700	0	23700	23500	0	23500	521	0	521	25500	0	25500
LEA	22700	0	22700	18400	0	18400	241	0	241	9200	0	9200
OTERO	2130	0	2130	2100	0	2100	614	0	614	2650	0	2650
SOUTHEAST DISTRICT	110030	0	110030	104900	0	104900	504	0	504	110050	0	110050
STATE	150000	1000	151000	140000	0	140000	509	0	509	148000	0	148000

AMERICAN PIMA COTTON: ACREAGE, YIELD, AND PRODUCTION BY COUNTIES, ALL IRRIGATED, 1974

COUNTY	ACRES		YIELD PER HARVESTED ACRE	PRODUCTION (480 POUND NET WEIGHT BALES)
	PLANTED	HARVESTED		
	ACRES	ACRES	POUNDS	BALES
HIDALGO	10	0	0	0
LUNA	1040	1020	345	735
SIERRA	40	30	183	10
SOUTHWEST DISTRICT	1090	1050	340	745
CHAVES	50	40	288	25
DONA ANA	13300	13250	426	11750
EDDY	150	150	229	70
OTERO	10	10	500	10
SOUTHEAST DISTRICT	13510	13450	423	11855
STATE	14600	14500	417	12600

UPLAND COTTON: ACREAGE, YIELD, AND PRODUCTION BY COUNTIES, IRRIGATED AND NON-IRRIGATED, 1975 1/

COUNTY	ACRES PLANTED			ACRES HARVESTED			YIELD PER HARVESTED ACRE			PRODUCTION 480 LB. NET WT. BALES		
	IRRIG.	NON-IRRIG.	TOTAL	IRRIG.	NON-IRRIG.	TOTAL	IRRIG.	NON-IRRIG.	TOTAL	IRRIG.	NON-IRRIG.	TOTAL
	ACRES	ACRES	ACRES	ACRES	ACRES	ACRES	POUNDS	POUNDS	POUNDS	BALES	BALES	BALES
CURRY	685	0	685	570	0	570	207	0	207	250	0	250
DE BACA	165	0	165	165	0	165	461	0	461	160	0	160
QUAY	1300	0	1300	1075	0	1075	289	0	289	650	0	650
ROOSEVELT	11900	100	12000	8500	100	8600	169	100	168	2997	23	3020
NORTHEAST DISTRICT	14050	100	14150	10310	100	10410	188	100	188	4057	23	4080
HIDALGO	3000	0	3000	2700	0	2700	428	0	428	2410	0	2410
LUNA	8500	0	8500	8200	0	8200	430	0	430	7340	0	7340
SIERRA	750	0	750	690	0	690	458	0	458	660	0	660
SOUTHWEST DISTRICT	12250	0	12250	11590	0	11590	431	0	431	10410	0	10410
CHAVES	20000	0	20000	18200	0	18200	380	0	380	14500	0	14500
DONA ANA	21500	0	21500	21250	0	21250	458	0	458	20300	0	20300
EDDY	14600	0	14600	14000	0	14000	476	0	476	14000	0	14000
LEA	10700	300	11000	8100	0	8100	194	0	194	3280	0	3280
OTERO	1500	0	1500	1450	0	1450	474	0	474	1430	0	1430
SOUTHEAST DISTRICT	68300	300	68600	63000	0	63000	406	0	406	53510	0	53510
STATE	94600	400	95000	84900	100	85000	382	100	382	67977	23	68000

1/ PRELIMINARY.

AMERICAN PIMA COTTON: ACREAGE, YIELD, AND PRODUCTION BY COUNTIES, ALL IRRIGATED, 1975 1/

COUNTY	ACRES		YIELD PER HARVESTED ACRE	PRODUCTION (480 POUND NET WEIGHT BALES)
	PLANTED	HARVESTED		
	ACRES	ACRES		
HIDALGO	20	0	0	0
LUNA	810	790	219	365
SOUTHWEST DISTRICT	830	790	219	365
CHAVES	40	30	97	6
DONA ANA	12330	11600	193	4685
EDDY	80	65	245	33
OTERO	20	15	353	11
SOUTHEAST DISTRICT	12470	11710	193	4735
STATE	13300	12500	195	5100

1/ PRELIMINARY.

BARLEY: ACREAGE, YIELD, AND PRODUCTION BY COUNTIES, IRRIGATED AND NON-IRRIGATED, 1974 1/

COUNTY	ACRES PLANTED ALL PURPOSES			HARVESTED FOR GRAIN								
	IRRIG.	NON-IRRIG.	TOTAL	ACRES			YIELD PER ACRE			PRODUCTION		
				IRRIG.	NON-IRRIG.	TOTAL	IRRIG.	NON-IRRIG.	TOTAL	IRRIG.	NON-IRRIG.	TOTAL
	ACRES	ACRES	ACRES	ACRES	ACRES	ACRES	BUSHEL	BUSHEL	BUSHEL	BUSHEL	BUSHEL	BUSHEL
BERNALILLO	0	0	0	0	0	0	0.0	0.0	0.0	0	0	0
MCKINLEY	0	0	0	0	0	0	0.0	0.0	0.0	0	0	0
RIO ARRIBA	200	300	500	200	100	300	30.0	20.0	26.7	6000	2000	8000
SANDOVAL	100	0	100	100	0	100	45.0	0.0	45.0	4500	0	4500
SAN JUAN	500	0	500	400	0	400	35.0	0.0	35.0	14000	0	14000
SANTA FE	60	20	80	50	20	70	60.0	30.0	51.4	3000	600	3600
TAOS	370	30	400	250	10	260	30.0	15.0	29.4	7500	150	7650
VALENCIA	1400	500	1900	1300	10	1310	33.0	15.0	32.9	42900	150	43050
NORTHWEST DISTRICT	2630	850	3480	2300	140	2440	33.9	20.7	33.1	77900	2900	80800
COLFAX	150	0	150	50	0	50	15.0	0.0	15.0	750	0	750
CURRY	7600	500	8100	6600	100	6700	48.0	15.0	47.5	316800	1500	318300
DE BACA	10	0	10	0	0	0	0.0	0.0	0.0	0	0	0
GUADALUPE	10	0	10	0	0	0	0.0	0.0	0.0	0	0	0
HARDING	0	0	0	0	0	0	0.0	0.0	0.0	0	0	0
MORA	150	50	200	150	0	150	40.0	0.0	40.0	6000	0	6000
QUAY	200	500	700	180	50	230	30.0	14.0	26.5	5400	700	6100
ROOSEVELT	170	0	170	130	0	130	50.0	0.0	50.0	6500	0	6500
SAN MIGUEL	200	0	200	50	0	50	45.0	0.0	45.0	2250	0	2250
TORRANCE	200	0	200	200	0	200	40.0	0.0	40.0	8000	0	8000
UNION	70	30	100	30	10	40	40.0	10.0	32.5	1200	100	1300
NORTHEAST DISTRICT	8760	1080	9840	7390	160	7550	46.9	14.4	46.3	346900	2300	349200
CATRON	0	0	0	0	0	0	0.0	0.0	0.0	0	0	0
GRANT	230	0	230	0	0	0	0.0	0.0	0.0	0	0	0
HIDALGO	1200	0	1200	900	0	900	50.0	0.0	50.0	45000	0	45000
LUNA	2500	0	2500	1600	0	1600	60.0	0.0	60.0	96000	0	96000
SIERRA	900	0	900	600	0	600	45.0	0.0	45.0	27000	0	27000
SOCORRO	50	0	50	40	0	40	50.0	0.0	50.0	2000	0	2000
SOUTHWEST DISTRICT	4880	0	4880	3140	0	3140	54.0	0.0	54.0	170000	0	170000
CHAVES	3550	0	3550	2200	0	2200	55.0	0.0	55.0	121000	0	121000
DONA ANA	2200	0	2200	2170	0	2170	50.0	0.0	50.0	108500	0	108500
EDDY	1800	100	1900	1100	0	1100	55.0	0.0	55.0	60500	0	60500
LEA	1400	100	1500	1000	0	1000	30.0	0.0	30.0	30000	0	30000
LINCOLN	40	0	40	0	0	0	0.0	0.0	0.0	0	0	0
OTERO	560	100	660	400	0	400	50.0	0.0	50.0	20000	0	20000
SOUTHEAST DISTRICT	9500	300	9800	6870	0	6870	49.5	0.0	49.5	340000	0	340000
STATE	25770	2230	28000	19700	300	20000	47.5	17.3	47.0	934800	5200	940000

1/ REVISED.

BARLEY: ACREAGE, YIELD, AND PRODUCTION BY COUNTIES, IRRIGATED AND NON-IRRIGATED, 1975 1/

COUNTY	ACRES PLANTED ALL PURPOSES			HARVESTED FOR GRAIN								
	IRRIG.	NON-IRRIG.	TOTAL	ACRES			YIELD PER ACRE			PRODUCTION		
				IRRIG.	NON-IRRIG.	TOTAL	IRRIG.	NON-IRRIG.	TOTAL	IRRIG.	NON-IRRIG.	TOTAL
	ACRES	ACRES	ACRES	ACRES	ACRES	ACRES	BUSHEL	BUSHEL	BUSHEL	BUSHEL	BUSHEL	BUSHEL
BERNALILLO	0	0	0	0	0	0	0.0	0.0	0.0	0	0	0
MCKINLEY	0	50	50	0	0	0	0.0	0.0	0.0	0	0	0
RIO ARRIBA	300	400	700	150	200	350	30.0	35.0	32.9	4500	7000	11500
SANDOVAL	100	0	100	50	0	50	35.0	0.0	35.0	1750	0	1750
SAN JUAN	1000	0	1000	700	0	700	46.0	0.0	46.0	32200	0	32200
SANTA FE	200	170	370	200	80	280	60.0	10.0	45.7	12000	800	12800
TAOS	550	20	570	550	0	550	35.0	0.0	35.0	19250	0	19250
VALENCIA	1300	300	1600	700	70	770	36.0	25.0	35.0	25200	1750	26950
NORTHWEST DISTRICT	3450	940	4390	2350	350	2700	40.4	27.3	38.7	94900	9550	104450
COLFAX	250	0	250	150	0	150	20.0	0.0	20.0	3000	0	3000
CURRY	6500	1700	8200	5600	1500	7100	74.0	25.0	63.6	414400	37500	451900
DE BACA	250	0	250	200	0	200	50.0	0.0	50.0	10000	0	10000
GUADALUPE	80	0	80	20	0	20	45.0	0.0	45.0	900	0	900
HARDING	0	0	0	0	0	0	0.0	0.0	0.0	0	0	0
MORA	250	150	400	100	50	150	41.0	17.0	33.0	4100	850	4950
QUAY	400	650	1050	400	600	1000	25.0	15.0	19.0	10000	9000	19000
ROOSEVELT	400	300	700	300	200	500	76.0	25.0	55.6	22800	5000	27800
SAN MIGUEL	300	0	300	50	0	50	45.0	0.0	45.0	2250	0	2250
TORRANCE	150	0	150	150	0	150	39.0	0.0	39.0	5850	0	5850
UNION	40	10	50	0	0	0	0.0	0.0	0.0	0	0	0
NORTHEAST DISTRICT	8620	2810	11430	6970	2350	9320	67.9	22.3	56.4	473300	52350	525650
CATRON	0	0	0	0	0	0	0.0	0.0	0.0	0	0	0
GRANT	50	0	50	50	0	50	44.0	0.0	44.0	2200	0	2200
HIDALGO	1200	0	1200	950	0	950	60.0	0.0	60.0	57000	0	57000
LUNA	4300	0	4300	4000	0	4000	65.0	0.0	65.0	260000	0	260000
SIERRA	200	0	200	100	0	100	55.0	0.0	55.0	5500	0	5500
SOCORRO	100	0	100	80	0	80	55.0	0.0	55.0	4400	0	4400
SOUTHWEST DISTRICT	5850	0	5850	5180	0	5180	63.5	0.0	63.5	329100	0	329100
CHAVES	4700	0	4700	3200	0	3200	74.0	0.0	74.0	236800	0	326800
DONA ANA	3300	0	3300	3000	0	3000	56.0	0.0	56.0	168000	0	168000
EDDY	2100	150	2250	2000	50	2050	57.5	23.0	56.7	115000	1150	116150
LEA	2200	300	2500	2000	150	2150	61.5	23.0	58.8	123000	3450	126450
LINCOLN	80	0	80	0	0	0	0.0	0.0	0.0	0	0	0
OTERO	800	700	1500	300	100	400	50.0	24.0	43.5	15000	2400	17400
SOUTHEAST DISTRICT	13180	1150	14330	10500	300	10800	62.6	23.3	61.6	657800	7000	664800
STATE	31100	4900	36000	25000	3000	28000	62.2	23.0	58.0	1555100	68900	1624000

1/ PRELIMINARY.

CORN: ACREAGE, YIELD, AND PRODUCTION BY COUNTIES, IRRIGATED AND NON-IRRIGATED, 1974 1/

COUNTY	ACRES PLANTED ALL PURPOSES			HARVESTED FOR GRAIN								
	IRRIG.	NON-IRRIG.	TOTAL	ACRES			YIELD PER ACRE			PRODUCTION		
				IRRIG.	NON-IRRIG.	TOTAL	IRRIG.	NON-IRRIG.	TOTAL	IRRIG.	NON-IRRIG.	TOTAL
				ACRES	ACRES	ACRES	BUSHEL	BUSHEL	BUSHEL	BUSHEL	BUSHEL	BUSHEL
BERNALILLO	640	30	670	150	20	170	40.0	15.0	37.1	6000	300	6300
MCKINLEY	100	300	400	100	0	100	25.0	0.0	25.0	2500	0	2500
RIO ARRIBA	110	40	150	50	10	60	35.0	10.0	30.8	1750	100	1850
SANDOVAL	520	50	570	200	0	200	40.0	0.0	40.0	8000	0	8000
SAN JUAN	6530	30	6560	1680	20	1700	60.0	10.0	59.4	100800	200	101000
SANTA FE	2040	0	2040	1000	0	1000	55.0	0.0	55.0	55000	0	55000
TAOS	110	0	110	20	0	20	20.0	0.0	20.0	400	0	400
VALENCIA	2000	400	2400	600	200	800	34.0	15.0	29.3	20400	3000	23400
NORTHWEST DISTRICT	12050	850	12900	3800	250	4050	51.3	14.4	49.0	194850	3600	198450
COLFAX	300	0	300	30	0	30	50.0	0.0	50.0	1500	0	1500
CURRY	21800	200	22000	16200	0	16200	92.0	0.0	92.0	1490400	0	1490400
DE BACA	450	0	450	40	0	40	65.0	0.0	65.0	2600	0	2600
GUADALUPE	90	0	90	90	0	90	60.0	0.0	60.0	5400	0	5400
HARDING	0	0	0	0	0	0	0.0	0.0	0.0	0	0	0
MORA	230	0	230	20	0	20	60.0	0.0	60.0	1200	0	1200
QUAY	1380	0	1380	1000	0	1000	60.0	0.0	60.0	60000	0	60000
ROOSEVELT	5000	0	5000	3000	0	3000	57.0	0.0	57.0	171000	0	171000
SAN MIGUEL	140	100	240	100	0	100	25.0	0.0	25.0	2500	0	2500
TORRANCE	5850	50	5900	3000	0	3000	65.0	0.0	65.0	195000	0	195000
UNION	11300	0	11300	8000	0	8000	88.0	0.0	88.0	704000	0	704000
NORTHEAST DISTRICT	46540	350	46890	31480	0	31480	83.7	0.0	83.7	2633600	0	2633600
CATRON	60	0	60	0	0	0	0.0	0.0	0.0	0	0	0
GRANT	60	0	60	0	0	0	0.0	0.0	0.0	0	0	0
HIDALGO	4220	0	4220	4120	0	4120	60.0	0.0	60.0	247200	0	247200
LUNA	2300	0	2300	200	0	200	64.0	0.0	64.0	12800	0	12800
SIERRA	970	0	970	0	0	0	0.0	0.0	0.0	0	0	0
SOCORRO	1100	0	1100	300	0	300	49.0	0.0	49.0	14700	0	14700
SOUTHWEST DISTRICT	8710	0	8710	4620	0	4620	59.5	0.0	59.5	274700	0	274700
CHAVES	4900	0	4900	50	0	50	65.0	0.0	65.0	3250	0	3250
DONA ANA	1200	0	1200	50	0	50	50.0	0.0	50.0	2500	0	2500
EDDY	600	0	600	10	0	10	50.0	0.0	50.0	500	0	500
LEA	1700	0	1700	700	0	700	60.0	0.0	60.0	42000	0	42000
LINCOLN	50	0	50	40	0	40	50.0	0.0	50.0	2000	0	2000
OTERO	50	0	50	0	0	0	0.0	0.0	0.0	0	0	0
SOUTHEAST DISTRICT	8500	0	8500	850	0	850	59.1	0.0	59.1	50250	0	50250
STATE	75800	1200	77000	40750	250	41000	77.2	14.4	77.0	3153400	3600	3157000

1/ REVISED.

CORN: ACREAGE, YIELD, AND PRODUCTION BY COUNTIES, IRRIGATED AND NON-IRRIGATED, 1975 1/

COUNTY	ACRES PLANTED			HARVESTED FOR GRAIN								
	ALL PURPOSES			ACRES			YIELD PER ACRE			PRODUCTION		
	IRRIG.	NON-IRRIG.	TOTAL	IRRIG.	NON-IRRIG.	TOTAL	IRRIG.	NON-IRRIG.	TOTAL	IRRIG.	NON-IRRIG.	TOTAL
	ACRES	ACRES	ACRES	ACRES	ACRES	ACRES	BUSHEL	BUSHEL	BUSHEL	BUSHEL	BUSHEL	BUSHEL
BERNALILLO	300	50	350	50	40	90	37.0	10.0	25.0	1850	400	2250
MCKINLEY	50	600	650	50	300	350	23.0	10.0	11.9	1150	3000	4150
RIO ARRIBA	110	40	150	80	20	100	30.0	10.0	26.0	2400	200	2600
SANDOVAL	350	50	400	300	0	300	51.0	0.0	51.0	15300	0	15300
SAN JUAN	6600	50	6650	600	40	640	58.0	11.5	55.1	34800	460	35260
SANTA FE	2600	10	2610	50	0	50	44.0	0.0	44.0	2200	0	2200
TAOS	170	0	170	170	0	170	26.0	0.0	26.0	4420	0	4420
VALENCIA	2100	150	2250	300	150	450	32.0	13.0	25.7	9600	1950	11550
NORTHWEST DISTRICT	12280	950	13230	1600	550	2150	44.8	10.9	36.2	71720	6010	77730
COLFAX	200	0	200	30	0	30	44.0	0.0	44.0	1320	0	1320
CURRY	39000	10	39010	36800	10	36810	114.0	27.0	114.0	4195200	270	4195470
DE BACA	100	0	100	100	0	100	71.0	0.0	71.0	7100	0	7100
GUADALUPE	90	0	90	90	0	90	55.0	0.0	55.0	4950	0	4950
HARDING	0	10	10	0	10	10	0.0	10.0	10.0	0	100	100
MORA	300	40	340	250	20	270	52.0	11.0	49.0	13000	220	13220
QUAY	800	0	800	100	0	100	38.0	0.0	38.0	3800	0	3800
ROOSEVELT	9100	0	9100	7500	0	7500	111.0	0.0	111.0	832500	0	832500
SAN MIGUEL	100	80	180	80	10	90	27.0	10.0	25.1	2160	100	2260
TORRANCE	5200	50	5250	3850	50	3900	58.0	10.0	57.4	223300	500	223800
UNION	11500	20	11520	10400	0	10400	89.0	0.0	89.0	925600	0	925600
NORTHEAST DISTRICT	66390	210	66600	59200	100	59300	104.9	11.9	104.7	6208930	1190	6210120
CATRON	60	0	60	0	0	0	0.0	0.0	0.0	0	0	0
GRANT	320	40	360	160	0	160	46.0	0.0	46.0	7360	0	7360
HIDALGO	1800	0	1800	1800	0	1800	70.0	0.0	70.0	126000	0	126000
LUNA	2800	0	2800	1000	0	1000	60.0	0.0	60.0	60000	0	60000
SIERRA	1000	0	1000	0	0	0	0.0	0.0	0.0	0	0	0
SOCORRO	1000	0	1000	300	0	300	43.0	0.0	43.0	12900	0	12900
SOUTHWEST DISTRICT	6980	40	7020	3260	0	3260	63.3	0.0	63.3	206260	0	206260
CHAVES	6100	0	6100	400	0	400	66.0	0.0	66.0	26400	0	26400
DONA ANA	850	0	850	150	0	150	51.0	0.0	51.0	7650	0	7650
EDDY	600	0	600	0	0	0	0.0	0.0	0.0	0	0	0
LEA	5500	0	5500	4700	0	4700	100.0	0.0	100.0	470000	0	470000
LINCOLN	50	0	50	40	0	40	46.0	0.0	46.0	1840	0	1840
OTERO	50	0	50	0	0	0	0.0	0.0	0.0	0	0	0
SOUTHEAST DISTRICT	13150	0	13150	5290	0	5290	95.6	0.0	95.6	505890	0	505890
STATE	98800	1200	100000	69350	650	70000	100.8	11.1	100.0	6992800	7200	7000000

1/ PRELIMINARY.

SORGHUM: ACREAGE, YIELD, AND PRODUCTION BY COUNTIES, IRRIGATED AND NON-IRRIGATED, 1974 1/

COUNTY	ACRES PLANTED ALL PURPOSES			HARVESTED FOR GRAIN								
	IRRIG.	NON-IRRIG.	TOTAL	ACRES			YIELD PER ACRE			PRODUCTION		
				IRRIG.	NON-IRRIG.	TOTAL	IRRIG.	NON-IRRIG.	TOTAL	IRRIG.	NON-IRRIG.	TOTAL
BERNALILLO	50	0	50	0	0	0	0.0	0.0	0.0	0	0	0
MCKINLEY	0	150	150	0	0	0	0.0	0.0	0.0	0	0	0
RIO ARRIBA	100	50	150	0	0	0	0.0	0.0	0.0	0	0	0
SANDOVAL	150	0	150	10	0	10	40.0	0.0	40.0	400	0	400
SAN JUAN	150	0	150	0	0	0	0.0	0.0	0.0	0	0	0
SANTA FE	0	0	0	0	0	0	0.0	0.0	0.0	0	0	0
TAOS	50	0	50	20	0	20	20.0	0.0	20.0	400	0	400
VALENCIA	220	0	220	200	0	200	40.0	0.0	40.0	8000	0	8000
NORTHWEST DISTRICT	720	200	920	230	0	230	38.3	0.0	38.3	8800	0	8800
COLFAX	0	350	350	0	0	0	0.0	0.0	0.0	0	0	0
CURRY	65000	40000	105000	53000	5000	58000	87.0	10.0	80.4	4611000	50000	4661000
DE BACA	3600	0	3600	2200	0	2200	71.0	0.0	70.9	156000	0	156000
GUADALUPE	320	0	320	0	0	0	0.0	0.0	0.0	0	0	0
HARDING	1150	1400	2550	800	0	800	11.0	0.0	11.0	8800	0	8800
MORA	50	350	400	10	0	10	40.0	0.0	40.0	400	0	400
QUAY	12500	25000	37500	8000	5000	13000	50.0	9.0	34.2	400000	45000	445000
ROOSEVELT	38000	60000	98000	33000	35000	68000	48.0	10.0	28.4	1584000	350000	1934000
SAN MIGUEL	250	650	900	250	0	250	50.0	0.0	50.0	12500	0	12500
TORRANCE	300	20	320	50	0	50	48.0	0.0	48.0	2400	0	2400
UNION	4000	13000	17000	3800	8000	11800	62.0	9.0	66.9	235600	72000	307600
NORTHEAST DISTRICT	125170	140770	265940	101110	53000	154110	69.3	9.7	48.8	7010700	517000	7527700
CATRON	20	0	20	0	0	0	0.0	0.0	0.0	0	0	0
GRANT	360	0	360	100	0	100	52.0	0.0	52.0	5200	0	5200
HIDALGO	11500	0	11500	11000	0	11000	83.0	0.0	83.0	913000	0	913000
LUNA	22000	0	22000	21000	0	21000	40.0	0.0	40.0	840000	0	840000
SIERRA	100	0	100	60	0	60	60.0	0.0	60.0	3600	0	3600
SOCORRO	1150	0	1150	1000	0	1000	71.0	0.0	71.0	71000	0	71000
SOUTHWEST DISTRICT	35130	0	35130	33160	0	33160	55.3	0.0	55.3	1832800	0	1832800
CHAVES	8000	0	8000	5900	0	5900	76.0	0.0	76.0	448400	0	448400
DONA ANA	2000	0	2000	1400	0	1400	58.0	0.0	58.0	81200	0	81200
EDDY	1600	0	1600	1300	0	1300	45.0	0.0	45.0	58500	0	58500
LEA	26000	3000	29000	22000	1700	23700	46.0	12.0	43.6	1012000	20400	1032400
LINCOLN	30	30	60	0	0	0	0.0	0.0	0.0	0	0	0
OTERO	350	0	350	200	0	200	51.0	0.0	51.0	10200	0	10200
SOUTHEAST DISTRICT	37980	3030	41010	30800	1700	32500	52.3	12.0	50.2	1610300	20400	1630700
STATE	199000	144000	343000	165300	54700	220000	63.3	9.8	50.0	10462600	537400	11000000

1/ REVISED.

SORGHUM: ACREAGE, YIELD, AND PRODUCTION BY COUNTIES, IRRIGATED AND NON-IRRIGATED, 1975 1/

COUNTY	ACRES PLANTED ALL PURPOSES			HARVESTED FOR GRAIN								
	IRRIG.	NON-IRRIG.	TOTAL	ACRES			YIELD PER ACRE			PRODUCTION		
				IRRIG.	NON-IRRIG.	TOTAL	IRRIG.	NON-IRRIG.	TOTAL	IRRIG.	NON-IRRIG.	TOTAL
	ACRES	ACRES	ACRES	ACRES	ACRES	ACRES	BUSHEL	BUSHEL	BUSHEL	BUSHEL	BUSHEL	BUSHEL
BERNALILLO	50	0	50	40	0	40	45.0	0.0	45.0	1800	0	1800
MCKINLEY	0	0	0	0	0	0	0.0	0.0	0.0	0	0	0
RIO ARRIBA	0	0	0	0	0	0	0.0	0.0	0.0	0	0	0
SANDOVAL	60	0	60	50	0	50	39.0	0.0	39.0	1950	0	1950
SAN JUAN	60	0	60	50	0	50	35.0	0.0	35.0	1750	0	1750
SANTA FE	0	0	0	0	0	0	0.0	0.0	0.0	0	0	0
TAOS	0	0	0	0	0	0	0.0	0.0	0.0	0	0	0
VALENCIA	250	0	250	250	0	250	33.0	0.0	33.0	8250	0	8250
NORTHWEST DISTRICT	420	0	420	390	0	390	35.3	0.0	35.3	13750	0	13750
COLFAX	0	1000	1000	0	600	600	0.0	15.0	15.0	0	9000	9000
CURRY	50000	50000	100000	45000	43000	88000	90.0	21.0	56.3	4050000	903000	4953000
DE BACA	3000	0	3000	2400	0	2400	75.0	0.0	75.0	180000	0	180000
GUADALUPE	100	0	100	20	0	20	65.0	0.0	65.0	1300	0	1300
HARDING	1100	3100	4200	1000	2900	3900	34.0	18.0	22.1	34000	52200	86200
MORA	0	0	0	0	0	0	0.0	0.0	0.0	0	0	0
QUAY	8000	17000	25000	6000	11000	17000	36.0	15.0	22.4	216000	165000	381000
ROOSEVELT	45000	70000	115000	45000	65000	110000	64.0	23.0	39.8	2880000	1495000	4375000
SAN MIGUEL	300	550	850	250	400	650	35.0	10.0	19.6	8750	4000	12750
TORRANCE	300	20	320	100	0	100	40.0	0.0	40.0	4000	0	4000
UNION	4000	13000	17000	3900	8000	11900	70.0	16.0	33.7	273000	128000	401000
NORTHEAST DISTRICT	111800	154670	266470	103670	130900	234570	73.8	21.1	44.4	7647050	2756200	10403250
CATRON	0	0	0	0	0	0	0.0	0.0	0.0	0	0	0
GRANT	1600	0	1600	1600	0	1600	40.0	0.0	40.0	64000	0	64000
HIDALGO	12200	0	12200	12000	0	12000	72.0	0.0	72.0	864000	0	864000
LUNA	25000	0	25000	24000	0	24000	97.0	0.0	97.0	2328000	0	2328000
SIERRA	600	0	600	600	0	600	40.0	0.0	40.0	24000	0	24000
SOCORRO	1000	0	1000	900	0	900	50.0	0.0	50.0	45000	0	45000
SOUTHWEST DISTRICT	40400	0	40400	39100	0	39100	85.0	0.0	85.0	3325000	0	3325000
CHAVES	11000	0	11000	6500	0	6500	70.0	0.0	70.0	455000	0	455000
DONA ANA	2000	0	2000	1900	0	1900	55.0	0.0	55.0	104500	0	104500
EDDY	2000	0	2000	2000	0	2000	43.0	0.0	43.0	86000	0	86000
LEA	27000	3000	30000	23000	2000	25000	46.0	18.0	43.8	1058000	36000	1094000
LINCOLN	80	30	110	40	0	40	25.0	0.0	25.0	1000	0	1000
OTERO	600	0	600	500	0	500	35.0	0.0	35.0	17500	0	17500
SOUTHEAST DISTRICT	42680	3030	45710	33940	2000	35940	50.7	18.0	48.9	1722000	36000	1758000
STATE	195300	157700	353000	177100	132900	310000	71.8	21.0	50.0	12707800	2792200	15500000

1/ PRELIMINARY.

WHEAT: ACREAGE, YIELD, AND PRODUCTION BY COUNTIES, IRRIGATED AND NON-IRRIGATED, 1974 1/

COUNTY	ACRES PLANTED			HARVESTED FOR GRAIN								
	ALL PURPOSES			ACRES			YIELD PER ACRE			PRODUCTION		
	IRRIG.	NON-IRRIG.	TOTAL	IRRIG.	NON-IRRIG.	TOTAL	IRRIG.	NON-IRRIG.	TOTAL	IRRIG.	NON-IRRIG.	TOTAL
	ACRES	ACRES	ACRES	ACRES	ACRES	ACRES	BUSHEL	BUSHEL	BUSHEL	BUSHEL	BUSHEL	BUSHEL
BERNALILLO	50	200	250	40	30	70	27.5	12.0	20.9	1100	360	1460
MCKINLEY	0	400	400	0	0	0	0.0	0.0	0.0	0	0	0
RIO ARRIBA	100	3500	3600	100	2500	2600	32.0	10.0	10.8	3200	25000	28200
SANDOVAL	50	200	250	40	100	140	35.0	18.1	22.9	1400	1810	3210
SAN JUAN	450	50	500	250	0	250	25.0	0.0	25.0	6250	0	6250
SANTA FE	500	1300	1800	500	400	900	40.0	19.0	30.7	20000	7600	27600
TAOS	250	150	400	100	50	100	25.0	7.0	19.0	2500	350	2850
VALENCIA	1800	200	2000	600	0	600	24.0	0.0	24.0	14400	0	14400
NORTHWEST DISTRICT	3200	6000	9200	1630	3080	4710	30.0	11.4	17.8	48850	35120	83970
COLFAX	1200	3000	4200	600	200	800	20.0	12.0	18.0	12000	2400	14400
CURRY	65000	120000	185000	59000	20000	79000	30.0	4.3	23.5	1770000	86000	1856000
DE BACA	500	380	880	300	0	300	30.0	0.0	30.0	9000	0	9000
GUADALUPE	100	120	220	0	0	0	0.0	0.0	0.0	0	0	0
HARDING	2500	11000	13500	1020	400	1420	10.0	5.0	8.6	10200	2000	12200
MORA	0	600	600	0	0	0	0.0	0.0	0.0	0	0	0
QUAY	9700	104300	114000	6000	18000	24000	18.0	4.7	8.0	108000	84600	192600
ROOSEVELT	14000	61000	75000	12000	28000	40000	25.0	5.0	11.0	300000	140000	440000
SAN MIGUEL	500	300	800	50	0	50	13.0	0.0	13.0	650	0	650
TORRANCE	1000	2300	3300	650	620	1270	42.0	4.0	23.4	27300	2480	29780
UNION	8400	5700	14100	6000	1200	7200	26.0	4.0	22.3	156000	4800	160800
NORTHEAST DISTRICT	102900	308700	411600	85620	68420	154040	27.2	4.7	17.6	2393150	322280	2715430
CATRON	60	0	60	0	0	0	0.0	0.0	0.0	0	0	0
GRANT	1440	0	1440	50	0	50	30.0	0.0	30.0	1500	0	1500
HIDALGO	900	100	1000	600	0	600	56.0	0.0	56.0	33600	0	33600
LUNA	1500	0	1500	1000	0	1000	30.0	0.0	30.0	30000	0	30000
SIERRA	0	0	0	0	0	0	0.0	0.0	0.0	0	0	0
SOCORRO	300	0	300	250	0	250	30.0	0.0	30.0	7500	0	7500
SOUTHWEST DISTRICT	4200	100	4300	1900	0	1900	31.1	0.0	38.2	72600	0	72600
CHAVES	400	0	400	100	0	100	35.0	0.0	35.0	3500	0	3500
DONA ANA	700	0	700	600	0	600	40.0	0.0	40.0	24000	0	24000
EDDY	120	0	120	50	0	50	30.0	0.0	30.0	1500	0	1500
LEA	2400	0	2400	500	0	500	23.0	0.0	23.0	11500	0	11500
LINCOLN	30	0	30	0	0	0	0.0	0.0	0.0	0	0	0
OTERO	250	0	250	100	0	100	35.0	0.0	35.0	3500	0	3500
SOUTHEAST DISTRICT	3900	0	3900	1350	0	1350	32.6	0.0	32.6	44000	0	44000
STATE	114200	314800	429000	90500	71500	162000	28.3	5.0	18.0	2558600	357400	2916000

1/ REVISED.

WHEAT: ACREAGE, YIELD, AND PRODUCTION BY COUNTIES, IRRIGATED AND NON-IRRIGATED, 1975 1/

COUNTY	ACRES PLANTED ALL PURPOSES			HARVESTED FOR GRAIN								
	IRRIG.	NON-IRRIG.	TOTAL	ACRES			YIELD PER ACRE			PRODUCTION		
				IRRIG.	NON-IRRIG.	TOTAL	IRRIG.	NON-IRRIG.	TOTAL	IRRIG.	NON-IRRIG.	TOTAL
				ACRES	ACRES	ACRES	BUSHEL	BUSHEL	BUSHEL	BUSHEL	BUSHEL	BUSHEL
BERNALILLO	50	210	260	0	140	140	0.0	7.0	7.0	0	980	980
MCKINLEY	100	2100	2200	0	1420	1420	0.0	9.0	9.0	0	12780	12780
RIO ARRIBA	100	2800	2900	100	2800	2900	35.0	15.0	15.7	3500	42000	45500
SANDOVAL	50	150	200	50	140	190	35.0	13.0	18.8	1750	1820	3570
SAN JUAN	400	50	450	370	0	370	39.0	0.0	39.0	14430	0	14430
SANTA FE	500	1250	1750	450	1200	1650	39.0	11.0	18.6	17550	13200	30750
TAOS	250	150	400	200	150	350	29.0	15.0	23.0	5800	2250	8050
VALENCIA	1900	300	2200	400	200	600	36.0	16.0	29.3	14400	3200	17600
NORTHWEST DISTRICT	3350	7010	10360	1570	6050	7620	36.6	12.6	17.5	57430	76230	133660
COLFAX	1200	3000	4200	800	1300	2100	28.0	11.0	17.5	22400	14300	36700
CURRY	60400	123000	183400	58500	109000	167500	54.0	21.0	32.5	3159000	2289000	5448000
DE BACA	1200	500	1700	950	450	1400	39.0	16.0	31.6	37050	7200	44250
GUADALUPE	140	120	260	0	0	0	0.0	0.0	0.0	0	0	0
HARDING	2800	16100	18900	2800	13300	16100	19.0	6.5	8.7	53200	86450	139650
MORA	350	300	650	300	200	500	24.0	10.0	18.4	7200	2000	9200
QUAY	9500	107000	116500	7700	89000	96700	34.0	16.0	17.4	261800	1424000	1685800
ROOSEVELT	19400	64500	83900	14900	50000	64900	45.0	15.0	21.9	670500	750000	1420500
SAN MIGUEL	550	300	850	400	200	600	26.0	6.1	19.4	10400	1220	11620
TORRANCE	1600	2300	3900	1400	1200	2600	39.0	10.0	25.6	54600	12000	66600
UNION	8400	5800	14200	8200	2300	10500	33.0	7.0	27.3	270600	16100	286700
NORTHEAST DISTRICT	105540	322920	428460	95950	266950	362900	47.4	17.2	25.2	4546750	4602270	9149020
CATRON	30	70	100	0	0	0	0.0	0.0	0.0	0	0	0
GRANT	900	0	900	0	0	0	0.0	0.0	0.0	0	0	0
HIDALGO	2050	100	2150	1200	0	1200	41.0	0.0	41.0	49200	0	49200
LUNA	2400	0	2400	2200	0	2200	54.0	0.0	54.0	118800	0	118800
SIERRA	350	0	350	350	0	350	32.0	0.0	32.0	11200	0	11200
SOCORRO	300	0	300	150	0	150	34.0	0.0	34.0	5100	0	5100
SOUTHWEST DISTRICT	6030	170	6200	3900	0	3900	47.3	0.0	47.3	184300	0	184300
CHAVES	350	0	350	80	0	80	54.0	0.0	54.0	4320	0	4320
DONA ANA	6300	0	6300	6200	0	6200	50.0	0.0	50.0	310000	0	310000
EDDY	4700	0	4700	4300	0	4300	49.0	0.0	49.0	210700	0	210700
LEA	3900	2500	6400	2000	0	2000	35.0	0.0	35.0	70000	0	70000
LINCOLN	30	0	30	0	0	0	0.0	0.0	0.0	0	0	0
OTERO	200	0	200	0	0	0	0.0	0.0	0.0	0	0	0
SOUTHEAST DISTRICT	15480	2500	17980	12580	0	12580	47.3	0.0	47.3	595020	0	595020
STATE	130400	332600	463000	114000	273000	387000	47.2	17.1	26.0	5383500	4678500	10062000

1/ PRELIMINARY.

NEW MEXICO AGRICULTURAL STATISTICS

ALL HAY: ACREAGE, YIELD, AND PRODUCTION BY COUNTIES, 1974 AND 1975

COUNTY	1974			1975 ^{1/}		
	ACRES HARVESTED	YIELD ^{2/} PER ACRE	PRODUCTION TONS	ACRES HARVESTED	YIELD ^{2/} PER ACRE	PRODUCTION TONS
	<u>ACRES</u>	<u>TONS</u>	<u>TONS</u>	<u>ACRES</u>	<u>TONS</u>	<u>TONS</u>
BERNALILLO	5330	4.51	24063	4180	4.55	19020
MCKINLEY	1450	1.39	2020	1000	1.40	1400
RIO ARRIBA	11000	1.27	14000	14100	1.43	20200
SANDOVAL	5100	2.35	12000	5180	2.91	15060
SAN JUAN	17100	2.69	46020	19400	2.83	54840
SANTA FE	5850	2.71	15850	6450	2.56	16540
TAOS	10550	1.73	18240	13200	1.68	22240
VALENCIA	15100	3.70	55820	14300	3.60	51460
NORTHWEST DISTRICT	71480	2.63	188013	77810	2.58	200760
COLFAX	11900	1.93	22980	12900	2.07	26670
CURRY	4900	2.77	13550	8600	3.08	26460
DE BACA	5800	4.10	23800	5200	4.85	25200
GUADALUPE	2000	2.31	4620	2700	2.24	6060
HARDING	1010	1.09	1097	2950	1.49	4410
MORA	6200	.99	6140	12000	1.28	15300
QUAY	12300	2.76	33900	17000	1.92	32572
ROOSEVELT	23500	1.76	41450	4350	4.36	18975
SAN MIGUEL	5000	.91	4560	6500	1.27	8230
TORRANCE	5000	4.28	21400	6000	3.97	23800
UNION	7100	2.31	16400	12000	2.19	26250
NORTHEAST DISTRICT	84710	2.24	189897	90200	2.37	213927
CATRON	250	3.52	880	250	3.08	770
GRANT	1000	4.00	4000	900	4.00	3600
HIDALGO	1500	4.70	7050	1500	4.50	6750
LUNA	2260	4.90	11080	2600	4.62	12000
SIERRA	2100	4.71	9900	2400	4.49	10770
SOCORRO	8350	4.49	37510	7800	4.30	33540
SOUTHWEST DISTRICT	15460	4.55	70420	15450	4.36	67430
CHAVES	40000	5.85	233800	40100	5.89	236300
DONA ANA	13500	4.58	61800	12400	5.52	68480
EDDY	20700	5.26	108840	21400	5.43	116100
LEA	14000	3.36	47000	11000	4.03	44300
LINCOLN	2400	1.25	3000	800	1.70	1360
OTERO	2750	4.45	12230	2840	5.05	14343
SOUTHEAST DISTRICT	93350	5.00	466670	88540	5.43	480883
STATE	265000	3.45	915000	272000	3.54	963000

^{1/} PRELIMINARY.^{2/} DERIVED.

ALFALFA HAY: ACREAGE, YIELD, AND PRODUCTION BY COUNTIES, ALL IRRIGATED, 1974 AND 1975

COUNTY	1974			1975 ^{1/}		
	ACRES HARVESTED	YIELD ^{2/} PER ACRE	PRODUCTION TONS	ACRES HARVESTED	YIELD ^{2/} PER ACRE	PRODUCTION TONS
	<u>ACRES</u>	<u>TONS</u>	<u>TONS</u>	<u>ACRES</u>	<u>TONS</u>	<u>TONS</u>
BERNALILLO	5200	4.60	23920	4100	4.60	18860
MCKINLEY	850	1.60	1360	800	1.50	1200
RIO ARriba	6000	1.50	9000	6100	2.00	12200
SANDOVAL	4600	2.50	11500	4700	3.00	14100
SAN JUAN	15000	2.90	43500	17000	3.00	51000
SANTA FE	5000	3.00	15000	5200	2.70	14040
TAOS	7000	2.20	15400	8000	2.00	16000
VALENCIA	13000	4.10	53300	13100	3.80	49780
NORTHWEST DISTRICT	56650	3.05	172980	59000	3.00	177180
COLFAX	8800	2.40	21120	9000	2.40	21600
CURRY	2400	4.50	10800	2400	5.60	13440
DE BACA	3600	6.00	21600	3700	6.00	22200
GUADALUPE	1400	3.00	4200	1400	3.40	4760
HARDING	300	2.00	600	350	2.20	770
MORA	3000	1.30	3900	3000	1.50	4500
QUAY	8000	3.70	29600	7500	2.70	20250
ROOSEVELT	4000	5.00	20000	4150	4.50	18675
SAN MIGUEL	2600	1.20	3120	2700	1.50	4050
TORRANCE	4000	5.10	20400	4000	5.00	20000
UNION	3100	4.00	12400	3300	4.00	13200
NORTHEAST DISTRICT	41200	3.59	147740	41500	3.46	143445
CATRON	200	3.50	700	200	3.60	720
GRANT	1000	4.00	4000	900	4.00	3600
HIDALGO	1500	4.70	7050	1500	4.50	6750
LUNA	2100	5.20	10920	2200	5.20	11440
SIERRA	2000	4.90	9800	2100	4.90	10290
SOCORRO	8100	4.60	37260	7800	4.30	33540
SOUTHWEST DISTRICT	14900	4.68	69730	14700	4.51	66340
CHAVES	38000	6.10	231800	40000	5.90	236000
DONA ANA	12500	4.80	60000	11600	5.80	67280
EDDY	20000	5.40	108000	21000	5.50	115500
LEA	11000	4.00	44000	10000	4.30	43000
LINCOLN	400	2.50	1000	400	2.40	960
OTERO	2350	5.00	11750	2800	5.10	14295
SOUTHEAST DISTRICT	84250	5.42	456550	85800	5.56	477035
STATE	197000	4.30	847000	201000	4.30	864000

1/ PRELIMINARY.

2/ DERIVED.

NEW MEXICO AGRICULTURAL STATISTICS

POTATOES: ACREAGE, YIELD, AND PRODUCTION BY COUNTIES, ALL IRRIGATED, 1974 AND 1975

COUNTY	1974				1975			
	ACRES		YIELD PER HARVESTED ACRE	PRODUCTION	ACRES		YIELD PER HARVESTED ACRE	PRODUCTION
	PLANTED	HARVESTED			PLANTED	HARVESTED		
	ACRES	ACRES	CWT.	CWT.	ACRES	ACRES	CWT.	CWT.
SAN JUAN	320	300	120	36000	220	220	110	24200
SANTA FE	455	435	200	87000	220	220	230	50600
OTHER COUNTIES	140	140	139	19400	110	110	136	14300
NORTHWEST DISTRICT	915	875	163	142400	550	550	163	89100
CURRY	400	400	285	114000	400	400	245	98000
ROOSEVELT	2060	2000	200	400000	1240	1070	204	218300
TORRANCE	1100	900	200	180000	1480	1450	200	290000
NORTHEAST DISTRICT ^{1/}	3565	3305	210	695000	3120	2920	208	607000
ALL OTHER AREAS	20	20	130	2600	30	30	130	3900
STATE	4500	4200	200	840000	3700	3500	200	700000

^{1/} INCLUDES COUNTIES FOR WHICH SEPARATE ESTIMATES WERE NOT MADE.

PEANUTS: ACREAGE, YIELD, AND PRODUCTION BY COUNTIES, ALL IRRIGATED, 1974 AND 1975

COUNTY	1974			1975		
	ACRES HARVESTED	YIELD PER ACRE	PRODUCTION	ACRES HARVESTED	YIELD PER ACRE	PRODUCTION
	ACRES	POUNDS	POUNDS	ACRES	POUNDS	POUNDS
CURRY	25	1560	39000	30	1700	51000
QUAY	60	1850	111000	70	1771	124000
ROOSEVELT	7355	1721	12657600	8440	2295	19366700
NORTHEAST DISTRICT	7440	1721	12807600	8540	2288	19541700
LUNA	0	0	0	10	660	6600
SOUTHWEST DISTRICT	0	0	0	10	660	6600
LEA	160	1415	226400	250	2415	603700
SOUTHEAST DISTRICT	160	1415	226400	250	2415	603700
STATE	7600	1715	13034000	8800		20152000

NEW MEXICO AGRICULTURAL STATISTICS

LETTUCE-SPRING: ACREAGE, YIELD, AND PRODUCTION BY COUNTIES, ALL IRRIGATED, 1974 AND 1975

COUNTY	1974				1975			
	ACRES		YIELD PER HARVESTED ACRE	PRODUC-TION	ACRES		YIELD PER HARVESTED ACRE	PRODUC-TION
	PLANTED	HARVESTED			PLANTED	HARVESTED		
	ACRES	ACRES	CWT.	CWT.	ACRES	ACRES	CWT.	CWT.
VALENCIA	120	100	180	18000	140	140	129	18100
NORTHWEST DISTRICT	120	100	180	18000	140	140	129	18100
LUNA, SIERRA	200	200	205	41000	260	160	140	22400
SOUTHWEST DISTRICT	200	200	205	41000	260	160	140	22400
DONA ANA	1080	1000	195	195000	1000	900	135	121500
SOUTHEAST DISTRICT	1080	1000	195	195000	1000	900	135	121500
STATE	1400	1300	195	254000	1400	1200	135	162000

LETTUCE-FALL: ACREAGE, YIELD, AND PRODUCTION BY COUNTIES, ALL IRRIGATED, 1974 AND 1975

COUNTY	1974				1975 ^{1/}			
	ACRES		YIELD PER HARVESTED ACRE	PRODUC-TION	ACRES		YIELD PER HARVESTED ACRE	PRODUC-TION
	PLANTED	HARVESTED			PLANTED	HARVESTED		
	ACRES	ACRES	CWT.	CWT.	ACRES	ACRES	CWT.	CWT.
SANDOVAL	20	20	170	3400	10	10	160	1600
SANTA FE	40	40	170	6800	60	60	155	9300
VALENCIA	150	110	160	17600	100	60	130	7800
NORTHWEST DISTRICT	210	170	164	27800	170	130	144	18700
TORRANCE	250	230	190	43700	180	150	210	31500
NORTHEAST DISTRICT	250	230	190	43700	180	150	210	31500
LUNA, SIERRA	540	500	230	115000	450	420	220	92400
SOUTHWEST DISTRICT	540	500	230	115000	450	420	220	92400
DONA ANA	2400	2300	225	517500	2800	2800	218	610400
SOUTHEAST DISTRICT	2400	2300	225	517500	2800	2800	218	610400
STATE	3400	3200	220	704000	3600	3500	215	753000

^{1/} PRELIMINARY.

TOMATOES FOR PROCESSING: ACREAGE, YIELD, AND PROD. BY COUNTIES, ALL IRRIG., 1974 AND 1975

COUNTY	1974				1975			
	ACRES		YIELD PER HARVESTED ACRE	PRODUC-TION	ACRES		YIELD PER HARVESTED ACRE	PRODUC-TION
	PLANTED	HARVESTED			PLANTED	HARVESTED		
	ACRES	ACRES	TONS	TONS	ACRES	ACRES	TONS	TONS
DONA ANA, LUNA	600	600	12	7200	860	860	10	8600
STATE	600	600	12	7200	860	860	10	8600

NEW MEXICO AGRICULTURAL STATISTICS

ONIONS-SUMMER: ACREAGE, YIELD, AND PRODUCTION BY COUNTIES, ALL IRRIGATED, 1974 AND 1975

COUNTY	1974				1975 1/			
	ACRES		YIELD PER HARVESTED ACRE	PRODUCTION	ACRES		YIELD PER HARVESTED ACRE	PRODUCTION
	PLANTED	HARVESTED			PLANTED	HARVESTED		
	ACRES	ACRES	CWT.	CWT.	ACRES	ACRES	CWT.	CWT.
BERNALILLO	20	20	200	4000	0	0	0	0
VALENCIA	50	50	166	8300	40	40	166	6640
NORTHWEST DISTRICT	70	70	176	12300	40	40	166	6640
CURRY	20	20	450	9000	20	20	400	8000
ROOSEVELT	50	50	300	15000	50	50	302	15100
NORTHEAST DISTRICT	70	70	343	24000	70	70	330	23100
LUNA, SIERRA	610	610	345	210450	440	440	334	146960
SOCORRO	0	0	0	0	30	30	330	9900
SOUTHWEST DISTRICT	610	610	345	210450	470	470	334	156860
CHAVES	0	0	0	0	20	20	280	5600
DONA ANA	2400	2300	350	805000	2200	2200	344	756800
LEA	250	250	281	70250	200	200	280	56000
SOUTHEAST DISTRICT	2650	2550	343	875250	2420	2420	338	818400
STATE	3400	3300	340	1122000	3000	3000	335	1005000

1/ PRELIMINARY.

APPLES: TREES 1968 AND PRODUCTION 1974 AND 1975

COUNTY	TOTAL TREES 1/	PRODUCTION 2/	
	1968	1974	1975 3/
	NUMBER	1,000 POUNDS	1,000 POUNDS
BERNALILLO	9000	----	----
RIO ARRIBA	93000	----	----
SANDOVAL	19400	----	----
SAN JUAN	34200	----	----
SANTA FE	17400	----	----
VALENCIA	8400	----	----
NORTHWEST DISTRICT	181400	1800	8000
NORTHEAST DISTRICT	3200	----	----
GRANT, SIERRA	13710	----	----
SOUTHWEST DISTRICT	13710	2680	1000
CHAVES, DONA ANA AND OTERO	39690	----	----
LINCOLN	44000	----	----
SOUTHEAST DISTRICT	83690	1520	2000
STATE	282000	6000	11000

1/ ORCHARDS OF 100 OR MORE TREES.

2/ TO CONVERT TO BUSHELS USE 42 POUNDS PER BUSHEL.

3/ PRELIMINARY.

PROCESSING CHILI: HARVESTED ACRES, PRODUCTION AND VALUE: NEW MEXICO, 1974-1975

Variety	Tons Processed						Total Value			
	Acres Harv. ^{1/}		Red (Dry wt.)		Green (Green wt.)		Red	Green		
	1974	1975	1974	1975	1974	1975	1974	1975	1974	1975
								1,000 Dollars		
New Mexico Mild and California Varieties	4600	5100	4150	3800	20000	23500	2855	2740	300	3520
New Mexico Hot and Jalapeno	600	600	800	650	^{2/}	^{2/}	544	436	^{2/}	^{2/}
Total	5200	5700	4950	4450	^{2/}	^{2/}	3399	3176	^{2/}	^{2/}

^{1/} Includes equivalent acres for tonnage purchased from open or market acreage. Some quantities of both green and red chili were also harvested for market.

^{2/} Omitted to avoid disclosure of individual operations.

PECANS: NUMBER OF ACRES, ORCHARDS, TREES, AND PRODUCTION, BY COUNTIES, MAY 1975

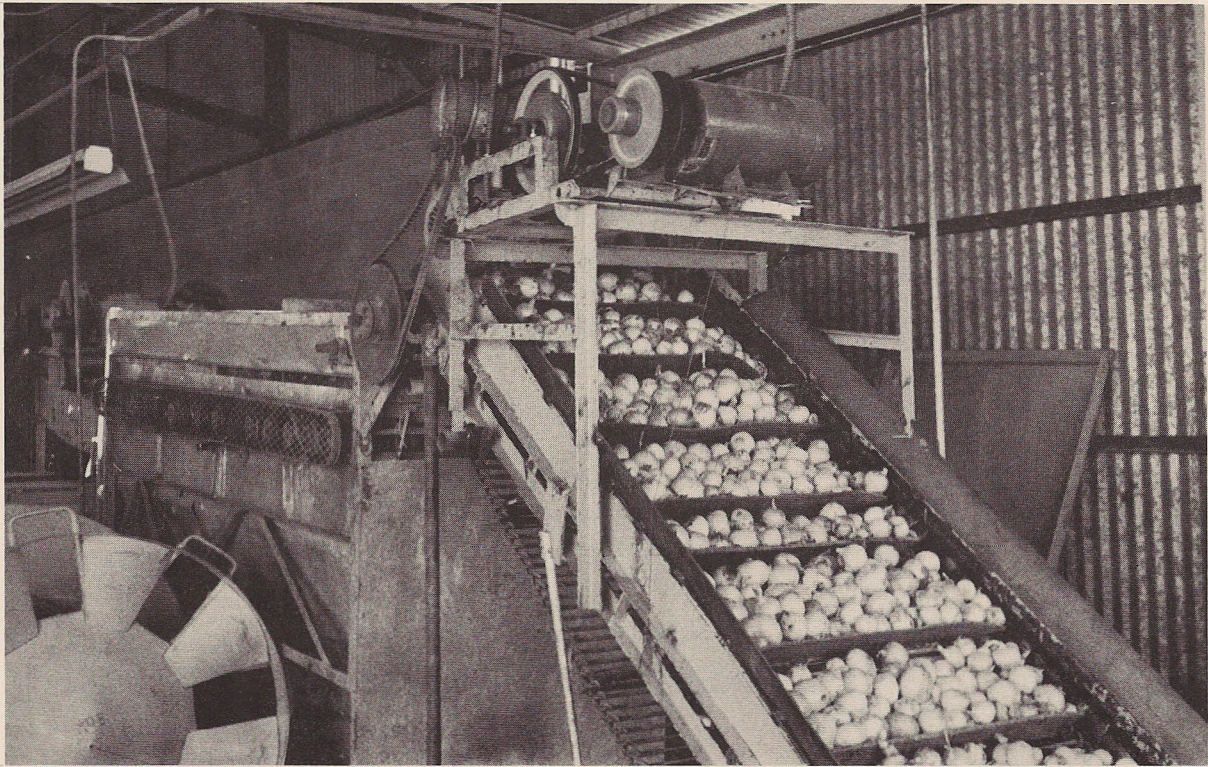
COUNTY	ORCHARDS			TREES		AVERAGE TREES PER ACRE	1974 PRODUCTION POUNDS
	NUMBER OF ACRES	NUMBER	PER-CENT OF TOTAL	NUMBER	PER-CENT OF TOTAL		
Dona Ana	11545	179	54.4	653940	77.9	56.6	11625300
Chaves	1369	20	6.1	112070	13.3	81.9	1076600
Luna	679	14	4.3	35180	4.2	51.8	117200
Eddy	542	56	17.0	20180	2.4	37.2	253700
Otero	309	38	11.6	10390	1.2	33.6	79300
Sierra	106	9	2.7	4820	.6	45.5	29400
Lea	44	3	.9	1350	.2	30.7	12300
De Baca	16	4	1.2	470	.1	29.4	3600
Other Counties	20	6	1.8	560	.1	28.0	2600
STATE ^{1/}	14630	329	100.0	838960	100.0	57.3	13200000

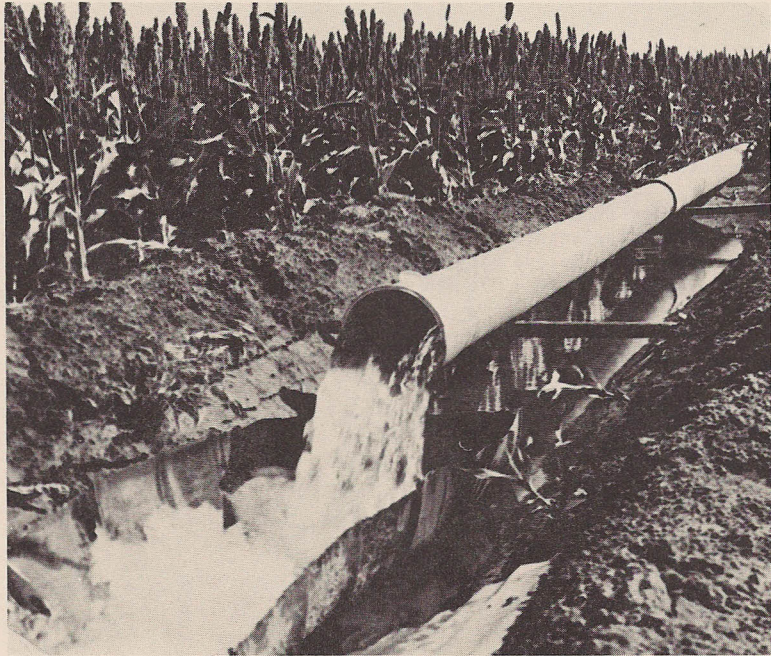
^{1/} Includes Roosevelt, Quay and Valencia Counties.

PECANS: NUMBER OF TREES BY COUNTIES AND AGE, MAY 1975

COUNTY	LESS THAN ONE YEAR	1 TO 3 YEARS	3 TO 5 YEARS	5 TO 10 YEARS	10 TO 15 YEARS	15 TO 20 YEARS	20 TO 30 YEARS	TOTAL TREES
Dona Ana	27738	89076	153605	167089	105395	12214	1381	97442
Chaves	2318	7453	9815	82172	9150	630	507	25
Luna	55	720	22375	7332	1186	3500	12	0
Eddy	797	3122	2775	4923	3222	4254	668	419
Otero	447	432	2753	2741	2842	74	761	340
Sierra	636	2049	408	352	816	225	175	159
Lea	125	125	0	250	150	700	0	0
De Baca	0	0	0	130	40	220	80	0
Other Counties	25	0	108	119	111	197	0	0
STATE ^{1/}	32141	102977	191839	265108	122912	22014	3584	98385
PERCENT	3.8	12.3	22.9	31.6	14.7	2.6	.4	11.7

^{1/} Includes Roosevelt, Quay and Valencia Counties.





NEW MEXICO AGRICULTURAL STATISTICS

LIVESTOCK SUMMARY - 1975

Cattlemen will long remember a few things that took place in 1975. Certainly they will remember the long drought, the changes in the grading system, the upturn in cattle prices, and the record high slaughter numbers, which in turn produced the first decline in total inventory numbers since 1967.

Cash receipts from livestock and livestock products increased 12 percent to 458.9 million dollars in 1975 from 410.3 million dollars in 1974.

The January 1, 1976, inventory of all cattle and calves at 1,650,000 head was 4 percent below the 1,720,000 estimated the year before. Cow numbers declined 70,000 head to 675,000 head in January, 1976, from 745,000 head in 1975. Beef cows totaled 644,000 head, and milk cows accounted for the remaining 31,000 head. Heifers weighing 500 pounds and over were estimated at 203,000 head, 16,000 head less than in 1975. Steers weighing 500 pounds and over at 223,000 were 28,000 head less than a year earlier. Bulls weighing 500 pounds and over at 40,000 head were 6,000 head less than the previous year. Calves, including heifers, steers and bulls, weighing less than 500 pounds totaled 509,000 head as of January 1, 1976, compared to 459,000 head in 1975.

Cattle and calves being fed for slaughter market as of January 1, 1976, were estimated at 185,000 head. This number was the second lowest January 1 estimate since 1971, but was 37 percent above the 1975 comparable figure. Marketings out of feedlots totaled 261,000 head during 1975. This compares with 355,000 head marketed the year before.

There was an average of 32,000 milk cows estimated in New Mexico during 1975. Milk production per cow per year at 11,500 pounds in 1975 was 597 pounds more than in 1974. Total milk production consequently increased to 368 million pounds in 1975 from 338 million pounds in 1974. Farm value of milk produced was 38,860,000 dollars in 1975, compared to 34,476,000 dollars in 1974.

Sheep and lambs were estimated at 590,000 head as of January 1, 1976. This represented a 2 percent increase from 1975. Sheep and lambs on feed numbered 23,000 head as of January 1, 1976, down from 28,000 head the year before. A total of 520,000 sheep shorn produced 5,120,000 pounds of wool, for an average 9.8 pounds per fleece during 1975. Comparable figures during 1974 were: sheep shorn, 610,000; wool produced, 6,010,000 pounds; average fleece weight, 9.9 pounds. The value of all wool produced was 2,662,000 dollars in 1975 at an average price per pound of 52 cents. Previous year comparable figures were 3,606,000 dollars value of production, and 60 cents per pound average price.

Hog and pig numbers, as of December 1, 1975, declined 13,000 head to 53,000 head from 66,000 head a year earlier. At an average value per head of 71 dollars, the total inventory value came up to 3,763,000 dollars in 1975, whereas in 1974 the average value per head was 39 dollars and the total inventory value was 2,574,000 dollars.

Total number of chickens in the State as of December 1, 1975, was estimated at 1,470,000. This was an increase of 22 percent from the 1,207,000 chickens on hand as of December 1, 1974. Hens and pullets of laying age were up to 1,107,000 in 1975 from 905,000 in 1974. Egg production was 234 million in 1975 up 37 million from 1974. Cash receipts from eggs sold totaled 11,305,000 dollars in 1975, compared to 9,555,000 dollars in 1974, and were a record high for the State. Average price per dozen eggs was 58.1 cents in 1974, slightly down from 1974.

Commercial red meat production from slaughter plants in New Mexico, including Federally and State inspected as well as custom exempt plants, totaled 345.8 million pounds (dressed weight) during 1975, up 88.2 million pounds from 1974 and a record high for the State. Number of animals slaughtered during 1975 and 1974, respectively, was: cattle - 576,500 and 422,500; hogs - 168,200 and 137,800; sheep and lambs - 95,400 and 103,900.

LIVESTOCK AND POULTRY: NUMBER ON FARMS BY CLASS, JANUARY 1, 1972 - 1976

SPECIES AND CLASS	1972	1973	1974	1975	1976 ^{1/}

CATTLE AND CALVES (INCLUDES FEEDLOTS)					
	<u>THOUSANDS</u>				
CLASSIFICATION BY SEX AND WEIGHT					
COWS AND HEIFERS THAT HAVE CALVED.....	656	710	700	745	675
BEEF COWS.....	625	680	670	714	644
MILK COWS.....	31	30	30	31	31
HEIFERS, 500 POUNDS AND OVER.....	227	219	217	219	203
FOR BEEF COW REPLACEMENT.....	126	120	102	126	106
FOR MILK COW REPLACEMENT.....	10	10	10	9	9
OTHER HEIFERS.....	91	89	105	84	88
STEERS, 500 POUNDS PLUS.....	171	179	240	251	223
BULLS, 500 POUNDS PLUS.....	31	34	38	46	40
CALVES, LESS THAN 500 POUNDS.....	424	473	420	459	509
ALL CATTLE AND CALVES.....	1509	1615	1615	1720	1650
HOGS ^{2/}					
ALL HOGS.....	63	70	66	53	---
BREEDING HOGS.....	11	12	12	10	---
MARKET HOGS.....	52	58	54	43	---
SHEEP AND LAMBS					
EWE LAMBS.....	125	121	105	77	79
WETHER AND RAM LAMBS.....	19	21	16	11	11
EWES, 1 YEAR PLUS.....	510	523	476	440	454
RAMS AND WETHERS, 1 YEAR PLUS.....	28	27	23	22	23
TOTAL STOCK SHEEP.....	682	692	620	550	567
SHEEP AND LAMBS ON FEED.....	32	51	52	28	23
ALL SHEEP AND LAMBS.....	714	743	672	578	590
CHICKENS ^{2/}					
PULLETS OF LAYING AGE.....	455	349	700	500	---
HENS.....	559	593	205	607	---
HENS AND PULLETS OF LAYING AGE.....	1014	942	905	1107	---
PULLETS NOT OF LAYING AGE.....	253	240	296	356	---
OTHER CHICKENS.....	4	4	6	7	---
ALL CHICKENS.....	1271	1186	1207	1470	---

^{1/} PRELIMINARY.

^{2/} ALL YEARS RELATE TO DECEMBER 1; 1975 PRELIMINARY.

ALL CATTLE, ALL SHEEP AND LAMBS: NUMBER ON FARMS AND VALUE, JANUARY 1, 1972-1976

YEAR	ALL CATTLE <u>1/</u>			ALL SHEEP AND LAMBS		
	NUMBER	VALUE PER HEAD	TOTAL VALUE	NUMBER	VALUE PER HEAD	TOTAL VALUE
	1,000 HEAD	DOLLARS	1,000 DOLLARS	1,000 HEAD	DOLLARS	1,000 DOLLARS
1972.....	1509	185.00	279165	714	19.00	13566
1973.....	1615	230.00	371450	743	25.50	18947
1974.....	1615	295.00	476425	672	30.50	20496
1975.....	1720	135.00	232200	578	25.50	14739
1976 <u>2/</u>	1650	165.00	272250	590	35.50	20650

1/ INCLUDES CATTLE IN FEEDLOTS. 2/ PRELIMINARY.

CATTLE AND CALVES: PRODUCTION AND INCOME, 1972-1975

YEAR	LIVEWEIGHT		PRICE PER 100 POUNDS		VALUE OF PRODUCTION	CASH RECEIPTS	VALUE OF HOME CONSUMPTION	GROSS INCOME
	PRODUCTION	MARKETINGS	CATTLE	CALVES				
	<u>1/</u>	<u>2/</u>	DOLLARS	DOLLARS				
1972.....	614390	1170984	35.80	43.50	226921	424671	2392	427063
1973.....	705060	1331736	45.30	55.70	324860	610577	2246	612823
1974.....	592380	943880	36.70	30.90	214289	344194	5393	349587
1975 <u>4/</u>	562460	1200900	39.30	27.40	213274	466691	4795	471486

1/ ADJUSTMENTS MADE FOR INSHIPMENTS AND CHANGES IN INVENTORY. 2/ EXCLUDES INTER-FARM SALES. 3/ INCLUDES RECEIPTS FROM MARKETINGS AND SALES OF FARM SLAUGHTERED MEAT. 4/ PRELIMINARY.

CATTLE AND CALVES: INVENTORY NUMBERS, CALF CROP, AND DISPOSITION, 1972-1975

YEAR	ALL CATTLE AND CALVES JANUARY 1	CALF CROP	INSHIPMENTS	MARKETINGS <u>1/</u>		FARM SLAUGHTER <u>2/</u>	DEATHS	
				CATTLE	CALVES		CATTLE	CALVES
				1000 HEAD				
1972.....	1509	619	1036	1282	180	4	33	50
1973.....	1615	610	1073	1407	177	4	38	57
1974.....	1615	600	720	1028	97	10	30	50
1975 <u>3/</u>	1720	590	938	1007	114	10	32	45

1/ INCLUDES CUSTOM SLAUGHTER FOR USE ON FARMS WHERE PRODUCED, BUT EXCLUDES INTER-FARM SALES WITHIN THE STATE. 2/ EXCLUDES CUSTOM SLAUGHTER FOR FARMERS AT COMMERCIAL ESTABLISHMENTS. 3/ PRELIMINARY.

CATTLE AND CALVES ON FEED: NUMBER ON FEED, WEIGHT GROUPS, CLASSES, MARKETINGS AND PLACEMENTS, BY QUARTERS, 1973 - 1976 1/

YEAR MONTH	TOTAL CATTLE/ CALVES ON FEED	NUMBER ON FEED BY WEIGHT GROUPS					NUMBER ON FEED BY CLASSES			MARKETINGS/PLACEMENTS 3 MO. PRIOR TO DATE	
		UNDER 500 POUNDS	500- 699 POUNDS	700- 899 POUNDS	900- 1099 POUNDS	1100 POUNDS AND OVER	STEERS/ STEER CALVES	HEIFERS/ HEIFER CALVES	COWS AND OTHERS	TOTAL FED CATTLE MARKETED	CATTLE AND CALVES PLACED ON FEED <u>2/</u>
-----1,000 HEAD-----											
JAN. 1											
1973	226	46	80	62	33	5	124	99	3	98	129
1974	232	35	72	79	38	8	137	93	2	112	114
1975	135	10	30	52	38	4	96	38	1	90	60
1976 <u>3/</u>	185	28	55	70	29	1	111	72	2	63	121
APR. 1											
1973	230	47	77	49	52	5	129	99	2	96	100
1974	235	31	67	71	54	12	141	92	2	70	73
1975	125	11	43	31	33	5	83	40	2	65	60
1976 <u>3/</u>	163	12	49	63	36	1	95	66	2	90	79
JULY 1											
1973	245	37	82	88	35	3	130	113	2	90	105
1974	190	9	58	75	44	4	114	74	2	100	55
1975	120	7	17	18	20	4	66	53	1	73	71
OCT. 1											
1973	230	40	64	68	49	9	131	97	2	103	88
1974	170	11	46	59	50	4	114	54	2	90	60
1975	130	8	23	21	17	1	70	59	1	60	73

1/ FINISHING FEEDLOTS ONLY; WARM-UP LOTS ARE EXCLUDED. 2/ INCLUDES CATTLE PLACED ON FEED AFTER BEGINNING OF QUARTER AND MARKETED BEFORE END OF QUARTER. 3/ PRELIMINARY.

MILK: PRODUCTION, DISPOSITION, PRICE AND INCOME, 1973 - 1975

YEAR	MILK COWS ON FARMS <u>1/</u>	MILK PRODUC- TION PER COW <u>2/</u>	TOTAL MILK PRODUC- TION <u>2/</u>	DISPOSITION OF MILK PRODUCED			MILK AND CREAM RETAILED BY FARMERS		VALUE OF SALES (RECEIPTS) FROM FARM MARKETINGS	GROSS FARM INCOME FROM DAIRY PRODUCTS
				USED ON FARMS WHERE PRODUCED	WHOLE MILK SOLD WHOLESALE	PRICE PER 100 POUNDS	MILK EQUIVALENT	PRICE PER QUART		
	1,000 HEAD	POUNDS	MILLION POUNDS	MILLION POUNDS	MILLION POUNDS	DOLLARS	MILLION QUARTS	CENTS	1,000 DOLLARS	1,000 DOLLARS
1973.....	30	10600	318	9	276	8.02	15.30	36.00	27661	28198
1974 <u>3/</u> ..	31	10903	338	10	309	9.60	8.84	43.00	33464	34178
1975 <u>4/</u> ..	32	11500	368	11	334	9.75	10.70	48.00	37700	38545

1/ AVERAGE NUMBER ON FARMS DURING YEAR, EXCLUDING HEIFERS NOT YET FRESH. 2/ EXCLUDES MILK SUCKED BY CALVES. 3/ REVISED. 4/ PRELIMINARY.

SHEEP AND LAMBS: INVENTORY NUMBERS, LAMB CROP, AND DISPOSITION, 1972 - 1975

YEAR	ON HAND JANUARY 1	LAMBS SAVED	AS % OF EWES 1 YR./ OLDER	INSHIPMENTS	MARKETINGS 1/		FARM SLAUGHTER	DEATHS	
		NUMBER		SHEEP/ LAMBS	SHEEP	LAMBS	SHEEP/LAMBS	SHEEP	LAMBS
		1,000 HEAD	PERCENT		1,000 HEAD				
1972.....	741	435	85	117	124	210	40	79	70
1973.....	743	410	78	127	196	210	34	86	82
1974.....	672	395	83	115	148	259	31	80	86
1975 2/.....	578	400	91	119	71	250	33	78	75

1/ EXCLUDES INTER-FARM SALES. 2/ PRELIMINARY.

SHEEP AND LAMBS: PRODUCTION AND INCOME, 1972 - 1975

YEAR	PRODUCTION	MARKETINGS	PRICE PER 100 POUNDS		VALUE OF	CASH RECEIPTS	VALUE OF	GROSS
	1/	2/	SHEEP	LAMBS	PRODUCTION	3/	HOME	INCOME
	1,000 POUNDS		DOLLARS	DOLLARS		1,000 DOLLARS	CONSUMPTION	
1972.....	25106	30865	7.60	29.00	5807	5912	640	6552
1973.....	20076	39206	13.30	34.80	5895	8803	735	9538
1974.....	18660	37710	12.40	36.80	5961	9699	650	10349
1975 4/.....	20014	28113	11.20	40.90	7978	9045	745	9790

1/ ADJUSTMENTS MADE FOR INSHIPMENTS AND CHANGES IN INVENTORY. 2/ EXCLUDES INTER-FARM SALES. 3/ INCLUDES RECEIPTS FROM MARKETINGS AND SALES OF FARM SLAUGHTERED MEAT. 4/ PRELIMINARY.

WOOL: NUMBER SHORN OF CLIPPED, FLEECE WEIGHT, PRODUCTION, PRICE, AND VALUE, 1972 - 1975

YEAR	WOOL				
	SHEEP SHORN 1/	AVERAGE WEIGHT OF FLEECE	PRODUCTION	PRICE PER POUNDS	VALUE
	1,000 HEAD	POUNDS	1,000 POUNDS	CENTS	1,000 DOLLARS
1972.....	668	9.2	6134	34	2086
1973.....	682	9.4	6402	81	5186
1974.....	610	9.9	6010	60	3606
1975 2/.....	520	9.8	5120	52	2662

1/ INCLUDES SHEARING AT COMMERCIAL FEEDING YARDS. 2/ PRELIMINARY.

HOGS: NUMBER ON FARMS BY CLASSES, PIG CROPS AND DISPOSITION, 1972 - 1975

YEAR	ON HAND DEC. 1	PIG CROPS						DISPOSITION			
	HOGS	SPRING			FALL			INSHIPMENTS	MARKETINGS ^{1/}	FARM SLAUGHTER	DEATHS
		SOWS FARROWED	PIGS PER LITTER	PIGS SAVED	SOWS FARROWED	PIGS PER LITTER	PIGS SAVED				
		1,000 HEAD	1,000 HEAD	1,000 HEAD	1,000 HEAD	1,000 HEAD	1,000 HEAD				
1972.....	63	6.3	7.6	48	5.6	7.6	43	4	87	3	7
1973.....	70	7.2	7.3	53	6.0	7.6	46	4	84	3	9
1974.....	66	7.0	7.5	53	6.6	7.2	48	14	106	5	8
1975 ^{2/} ...	53	6.2	6.3	39	7.0	6.3	44	59	144	4	7

^{1/} EXCLUDES INTER-FARM SALES. ^{2/} PRELIMINARY.

HOGS: PRODUCTION AND INCOME, 1972 - 1975

YEAR	PRODUCTION ^{1/}	MARKETINGS ^{2/}	PRICE PER 100 POUNDS	VALUE OF PRODUCTION	CASH RECEIPTS ^{3/}	VALUE OF HOME CONSUMPTION	GROSS INCOME
	1,000		DOLLARS	1,000 DOLLARS			
1972.....	20317	19433	25.50	5181	4955	329	5284
1973.....	20987	19011	39.00	8185	7414	503	7917
1974.....	24390	24997	35.50	8658	8645	611	9256
1975 ^{4/} ...	30055	33012	47.80	14366	15533	658	16191

^{1/} ADJUSTMENTS MADE FOR INSHIPMENTS AND CHANGES IN INVENTORY. ^{2/} EXCLUDES INTER-FARM SALES. ^{3/} INCLUDES RECEIPTS FROM MARKETINGS AND SALES OF FARM SLAUGHTERED MEAT. ^{4/} PRELIMINARY.

EGGS: NUMBER LAYERS, FARM PRODUCTION, PRICE, AND INCOME, 1972 - 1975

YEAR	AVERAGE YEARLY NUMBER LAYERS ON HAND	EGG PRODUCTION	EGGS CONSUMED IN FARM HOUSEHOLD	EGGS SOLD	PRICE PER DOZEN	CASH RECEIPTS	VALUE OF EGGS CONSUMED IN FARM HOUSEHOLD	GROSS INCOME
	1,000 HEAD	MILLION EGGS			CENTS	1,000 DOLLARS		
1972.....	1031	234	1.0	233.0	35.9	6971	30	7001
1973.....	940	208	4.0	204.0	57.6	9792	192	9984
1974.....	906	197	1.0	196.0	58.5	9555	49	9604
1975 ^{1/} ...	968	234	0.5	233.5	58.1	11305	24	11329

^{1/} PRELIMINARY.

BEEES AND HONEY: COLONIES, YIELD, PRICE AND VALUE, 1972-1975

YEAR	HONEY					BEESWAX			
	COLONIES OF BEES	POUNDS PER COLONY	PRODUCTION	PRICE PER POUND	VALUE OF PRODUCTION	STOCKS ON HAND DEC. 15	PRODUCTION	PRICE PER POUND	VALUE OF PRODUCTION
	1,000 HIVES	POUNDS	1,000 POUNDS	CENTS	1,000 DOLLARS	1,000 POUNDS	1,000 POUNDS	CENTS	1,000 DOLLARS
1972.....	14	59	826	32.6	269	83	13	53	7
1973.....	15	50	750	40.7	305	120	12	50	6
1974.....	16	57	912	47.0	429	438	15	95	14
1975 <u>1/</u>	17	55	935	53.3	498	206	15	124	19

1/ PRELIMINARY.

LIVESTOCK SLAUGHTER: NUMBER AND TOTAL LIVELWEIGHT, BY SPECIES, 1972-1975 1/

YEAR	CATTLE		HOGS		SHEEP AND LAMBS	
	NUMBER	TOTAL LIVELWEIGHT	NUMBER	TOTAL LIVELWEIGHT	NUMBER	TOTAL LIVELWEIGHT
	1,000 HEAD	1,000 POUNDS	1,000 HEAD	1,000 POUNDS	1,000 HEAD	1,000 POUNDS
1972.....	388.0	379875	115.9	27074	123.7	13581
1973.....	376.5	365445	104.8	24950	134.9	14735
1974.....	422.5	404205	137.8	32508	103.9	11242
1975 <u>2/</u>	576.5	557904	168.2	38929	95.4	10109

1/ INCLUDES SLAUGHTER UNDER FEDERAL INSPECTION AND OTHER COMMERCIAL SLAUGHTER, EXCLUDES FARM SLAUGHTER. 2/ PRELIMINARY.

SHEEP ON FEED: NUMBER ON FEED, BY COUNTIES, JANUARY 1, 1971 - 1976

COUNTY	1971	1972	1973	1974	1975	1976 <u>1/</u>
	-----HEAD-----					
NORTHWEST DISTRICT <u>2/</u>	700	1300	1000	1000	4000	5000
NORTHEAST DISTRICT <u>2/</u>	6500	2000	1500	2900	2700	1800
SOUTHWEST DISTRICT <u>2/</u>	100	100	100	200	100	100
CHAVES	24000	23000	45000	45200	19800	15000
OTHER COUNTIES <u>2/</u>	5700	5600	3400	2700	1400	1100
SOUTHEAST DISTRICT	29700	28600	48400	47900	21200	17400
STATE	37000	32000	51000	52000	28000	23000

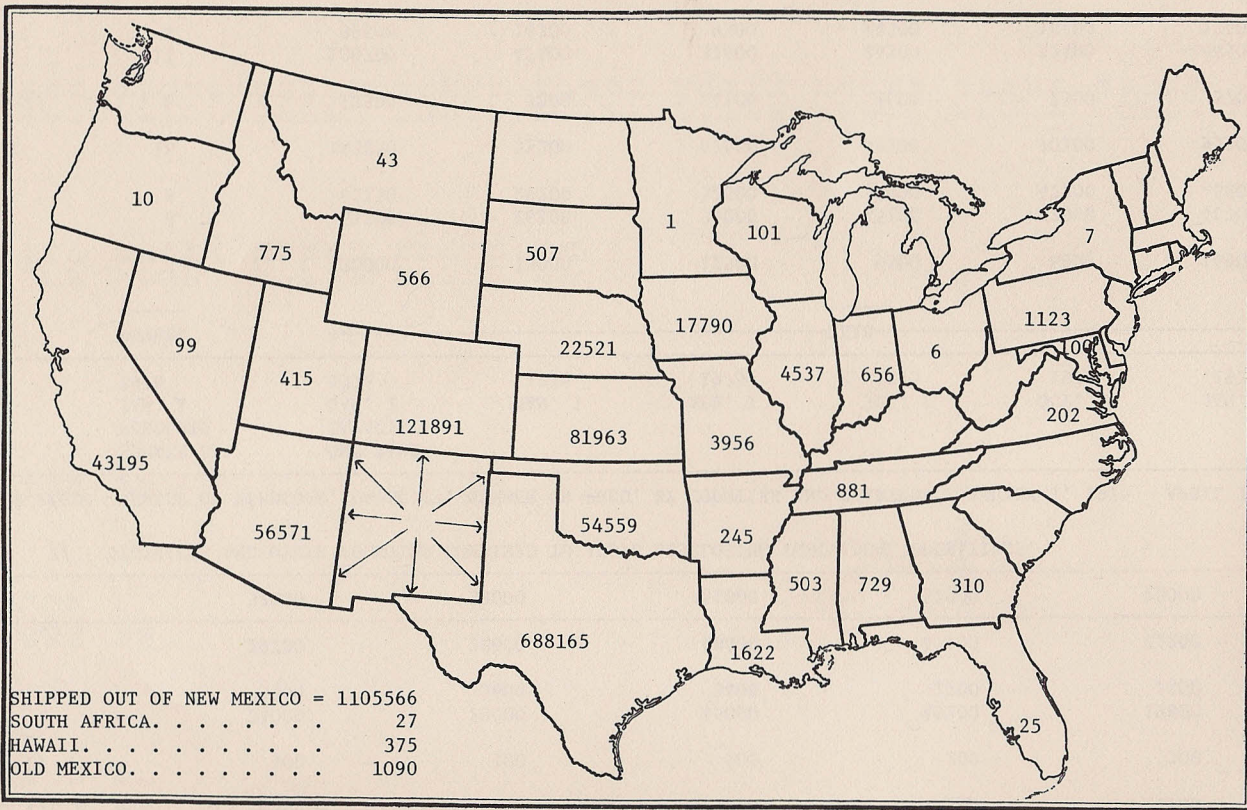
1/ PRELIMINARY. 2/ DISTRICTS AND OTHER COUNTIES COMBINED TO AVOID DISCLOSING INDIVIDUAL OPERATIONS.

CATTLE ON FEED: NUMBER OF FEEDLOTS, CAPACITY, NUMBER ON FEED, BY COUNTIES AND QUARTERS, JANUARY 1, 1975 - APRIL 1, 1976

COUNTY	NUMBER OF FEEDLOTS	ONE TIME CAPACITY	JAN. 1	APR. 1	JUL. 1	OCT. 1	JAN. 1	APR. 1
	JAN. 1 1976	JAN. 1 1976	JAN. 1 1975	APR. 1 1975	JUL. 1 1975	OCT. 1 1975	JAN. 1 1976	APR. 1 1976 <u>1/</u>
	-----HEAD-----							
NORTHWEST DISTRICT <u>2/</u>	3	20000	13000	12500	9500	6800	15900	15500
CURRY	8	61700	26100	35000	35100	27800	46700	49900
OTHER COUNTIES <u>2/</u>	8	82150	29200	32500	34000	42300	48800	36900
NORTHEAST DISTRICT	16	143850	55300	67500	69100	70100	95500	86800
SOUTHWEST DISTRICT <u>2/</u>	3	12500	3000	4100	2600	2300	5700	2500
CHAVES	11	100700	47400	31400	24300	32400	44500	40000
OTHER COUNTIES <u>2/</u>	4	39500	16300	9500	14500	18400	23400	18200
SOUTHEAST DISTRICT	15	140200	63700	40900	38800	50800	67900	58200
STATE	37	316550	135000	125000	120000	130000	185000	163000

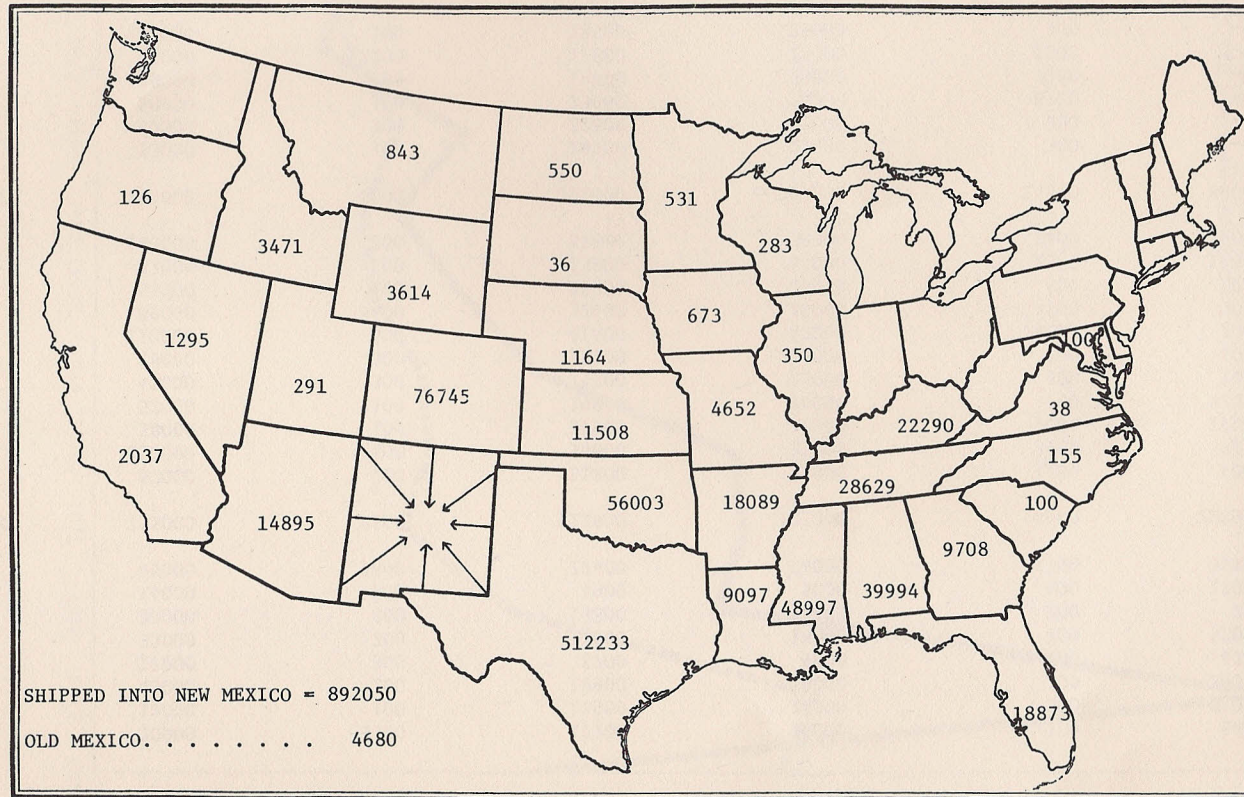
1/ PRELIMINARY. 2/ DISTRICTS AND OTHER COUNTIES COMBINED TO AVOID DISCLOSING INDIVIDUAL OPERATIONS.

CATTLE NUMBERS SHIPPED OUT OF NEW MEXICO BY STATE OF DESTINATION, 1975 ^{1/}



^{1/} INCLUDES SHIPMENTS FROM THE CLOVIS YARDS.
SOURCE: NEW MEXICO LIVESTOCK BOARD INSPECTION RECORDS.

CATTLE NUMBERS SHIPPED INTO NEW MEXICO BY STATE OF ORIGIN, 1975 1/



1/ INCLUDES SHIPMENTS TO THE CLOVIS YARDS.
 SOURCE: NEW MEXICO LIVESTOCK BOARD INSPECTION REPORTS

LIVESTOCK INVENTORY: NUMBER ON FARMS, BY COUNTIES, JANUARY 1, 1976 1/

COWS AND HEIFERS THAT HAVE CALVED

COUNTY	ALL CATTLE <u>2/</u>	MILK COWS	BEEF COWS	ALL COWS	ALL HOGS <u>3/</u>	ALL SHEEP	ALL CHICKENS <u>3/</u>
				HEAD			
BERNALILLO	29000	3000	13000	16000	700	6100	400200
MCKINLEY	20000	100	13900	14000	300	83800	2000
RIO ARRIBA	44000	100	16900	17000	200	20400	2000
SANDOVAL	17000	700	8300	9000	100	4500	1000
SAN JUAN	33000	700	15300	16000	500	56600	3500
SANTA FE	30000	200	11800	12000	200	200	1000
TAOS	12000	100	4900	5000	400	17500	2000
VALENCIA	40000	3500	19500	23000	1500	37400	4000
NORTHWEST DISTRICT	225000	8400	103600	112000	3900	226500	415700
COLFAX	62000	200	27800	28000	1100	4200	2500
CURRY	110000	400	31600	32000	3000	3300	4100
DE BACA	38000	200	15800	16000	500	17200	3600
GUADALUPE	52000	100	19900	20000	700	31000	1000
HARDING	47000	200	19800	20000	300	1100	1000
MORA	29000	200	13800	14000	500	4000	1000
QUAY	88000	600	35400	36000	3000	2100	2000
ROOSEVELT	70000	5000	28000	33000	5000	4400	41000
SAN MIGUEL	55000	200	20800	21000	400	1900	8000
TORRANCE	37000	200	13800	14000	500	18200	1000
UNION	168000	200	32800	33000	2200	1100	2000
NORTHEAST DISTRICT	756000	7500	259500	267000	17200	88500	67200
CATRON	53000	100	23900	24000	300	---	900
GRANT	60000	200	30800	31000	200	---	1500
HIDALGO	49000	100	20900	21000	---	---	900
LUNA	39000	100	19900	20000	---	---	900
SIERRA	35000	2700	12300	15000	2000	---	900
SOCORRO	51000	500	25500	26000	300	---	1700
SOUTHWEST DISTRICT <u>4/</u>	287000	3700	133300	137000	15300	9500	6800
CHAVES	139000	2700	38300	41000	7600	109900	6000
DONA ANA	34000	5500	14500	20000	2000	300	956400
EDDY	69000	600	20400	21000	4000	33200	6000
LEA	67000	2000	33000	35000	2000	5600	8900
LINCOLN	39000	200	21800	22000	200	101900	1000
OTERO	34000	400	19600	20000	800	14600	2000
SOUTHEAST DISTRICT	382000	11400	147600	159000	16600	265500	980300
STATE	1650000	31000	644000	675000	53000	590000	1470000

1/ PRELIMINARY. 2/ INCLUDES COWS AND HEIFERS THAT HAVE CALVED. 3/ DECEMBER 1, 1975. 4/ DISTRICT TOTAL INCLUDES COUNTIES FOR WHICH SEPARATE ESTIMATES WERE NOT MADE.

CROP VALUES: FARM VALUES OF PRODUCTION OF PRINCIPAL CROPS, BY COUNTIES, 1974 1/ 2/

COUNTY	WHEAT	SORGHUM FOR GRAIN	CORN FOR GRAIN	BARLEY	COTTON AND COTTONSEED	ALL HAY
-----1,000 DOLLARS-----						
BERNALILLO	5.8	-----	19.3	-----	-----	1407.7
MCKINLEY	-----	-----	7.7	-----	-----	118.2
RIO ARRIBA	112.8	-----	5.7	18.4	-----	819.0
SANDOVAL	12.8	1.2	24.6	10.4	-----	702.0
SAN JUAN	25.0	-----	310.1	32.2	-----	2692.3
SANTA FE	110.4	-----	168.9	8.3	-----	927.2
TAOS	11.4	1.2	1.2	17.6	-----	1067.0
VALENCIA	57.6	24.7	71.8	99.0	-----	3265.5
NORTHWEST DISTRICT	335.8	27.1	609.3	185.9	-----	10998.9
COLFAX	57.6	-----	4.6	1.7	-----	1344.3
CURRY	7424.0	14402.5	4575.4	732.0	96.5	792.7
DE BACA	36.0	482.0	8.0	-----	34.7	1392.3
GUADALUPE	-----	-----	16.6	-----	-----	270.3
HARDING	48.8	27.2	-----	-----	-----	64.2
MORA	-----	1.2	3.7	13.8	-----	359.2
QUAY	770.4	1375.1	184.2	14.0	440.2	1983.2
ROOSEVELT	1760.0	5976.1	525.0	15.0	1606.0	2424.8
SAN MIGUEL	2.6	38.6	7.7	5.2	-----	266.8
TORRANCE	119.1	7.4	598.7	18.4	-----	1251.9
UNION	643.2	950.5	2161.3	3.0	-----	959.4
NORTHEAST DISTRICT	10861.7	23260.6	8085.2	803.1	2177.4	11109.1
CATRON	-----	-----	-----	-----	-----	51.5
GRANT	6.0	16.1	-----	-----	225.0	234.0
HIDALGO	134.5	2821.2	758.9	103.5	1904.7	412.4
LUNA	120.0	2595.6	39.3	220.8	6542.3	648.2
SIERRA	-----	11.1	-----	62.1	567.5	579.2
SOCORRO	30.0	219.4	45.1	4.6	-----	2194.3
SOUTHWEST DISTRICT	290.5	5663.4	843.3	391.0	9239.5	4119.6
CHAVES	14.0	1385.6	10.0	278.2	8763.9	13677.4
DONA ANA	96.0	250.9	7.7	249.6	16788.0	3615.3
EDDY	6.0	180.8	1.5	139.2	7473.8	6367.2
LEA	46.0	3190.1	128.9	69.0	2694.4	2749.5
LINCOLN	-----	-----	6.1	-----	-----	175.5
OTERO	14.0	31.5	-----	46.0	788.0	715.5
SOUTHEAST DISTRICT	176.0	5038.9	154.2	782.0	36508.1	27300.4
STATE	11664.0	33990.0	9692.0	2162.0	47925.0	53528.0

1/ FOR SOME CROPS, COUNTY VALUES WILL NOT ADD TO DISTRICT OR STATE TOTALS. COUNTY VALUES ARE BASED ON SEASON AVERAGE PRICE FOR THE STATE.
2/ PRELIMINARY. 3/ OTHER CROPS INCLUDE: BROOMCORN, PROCESSING TOMATOES, APPLES, PECANS, SUGAR BEETS, AND CHILI FOR PROCESSING.

CROP VALUES: FARM VALUES OF PRODUCTION OF PRINCIPAL CROPS, BY COUNTIES, 1974 1/ 2/

COUNTY	POTATOES	PEANUTS	EARLY SPRING AND EARLY FALL LETTUCE	ONIONS	OTHER CROPS <u>3/</u>	TOTAL
-----1,000 DOLLARS-----						
BERNALILLO	-----	-----	-----	26.2	-----	1485.2
MCKINLEY	-----	-----	-----	-----	-----	125.9
RIO ARRIBA	-----	-----	-----	-----	-----	937.5
SANDOVAL	-----	-----	36.0	-----	-----	776.6
SAN JUAN	106.2	-----	-----	-----	-----	3133.6
SANTA FE	256.7	-----	72.1	-----	-----	1533.3
TAOS	-----	-----	-----	-----	-----	1080.8
VALENCIA	-----	-----	354.5	54.3	-----	3882.7
NORTHWEST DISTRICT	420.1	-----	462.6	80.5	-----	13118.2
COLFAX	-----	-----	-----	-----	-----	1406.5
CURRY	336.3	7.0	-----	58.9	-----	27752.2
DE BACA	-----	-----	-----	-----	-----	1953.0
GUADALUPE	-----	-----	-----	-----	-----	286.9
HARDING	-----	-----	-----	-----	-----	140.2
MORA	-----	-----	-----	-----	-----	364.1
QUAY	-----	20.0	-----	-----	-----	4773.1
ROOSEVELT	1180.0	2278.2	-----	98.1	-----	15946.3
SAN MIGUEL	-----	-----	-----	-----	-----	315.7
TORRANCE	531.0	-----	463.2	-----	-----	3018.5
UNION	-----	-----	-----	-----	-----	4714.4
NORTHEAST DISTRICT	2050.3	2305.2	463.2	157.0	-----	61320.4
CATRON	-----	-----	-----	-----	-----	51.5
GRANT	-----	-----	-----	-----	-----	481.1
HIDALGO	-----	-----	-----	-----	-----	6020.2
LUNA	-----	-----	-----	-----	-----	9945.4
SIERRA	-----	-----	-----	-----	-----	1156.8
SOCORRO	-----	-----	-----	-----	-----	2533.8
SOUTHWEST DISTRICT	-----	-----	1601.5	1376.3	-----	23569.1
CHAVES	-----	-----	-----	-----	-----	23850.9
DONA ANA	-----	-----	7304.7	5264.7	-----	38603.6
EDDY	-----	-----	-----	-----	-----	14029.3
LEA	-----	40.8	-----	459.4	-----	9768.5
LINCOLN	-----	-----	-----	-----	-----	181.6
OTERO	-----	-----	-----	-----	-----	1549.0
SOUTHEAST DISTRICT	-----	40.8	7304.7	5724.2	-----	83029.3
STATE	2478.0	2346.0	9832.0	7338.0	14363.0	195408.0

1/ SEE FOOTNOTE PREVIOUS PAGE. 2/ SEE FOOTNOTE PREVIOUS PAGE. 3/ SEE FOOTNOTE PREVIOUS PAGE.

CROP VALUES: FARM VALUES OF PRODUCTION OF PRINCIPAL CROPS, BY COUNTIES, 1975 1/ 2/

COUNTY	WHEAT	SORGHUM FOR GRAIN	CORN FOR GRAIN	BARLEY	COTTON AND COTTONSEED	ALL HAY
-----1,000 DOLLARS-----						
BERNALILLO	3.5	4.4	5.7	----	----	1027.1
MCKINLEY	46.0	----	10.6	----	----	75.6
RIO ARRIBA	163.8	----	6.6	25.9	----	1090.8
SANDOVAL	12.8	4.8	39.0	3.9	----	813.2
SAN JUAN	51.9	4.3	89.9	72.5	----	2961.4
SANTA FE	110.7	----	5.6	28.8	----	893.2
TAOS	29.0	----	11.3	43.3	----	1201.0
VALENCIA	63.4	20.3	29.5	60.6	----	2778.8
NORTHWEST DISTRICT	481.1	33.8	198.2	235.0	----	10841.1
COLFAX	132.1	22.1	3.4	6.8	----	1440.2
CURRY	19613.0	12184.3	10698.3	1016.5	69.6	1428.8
DE BACA	159.3	442.8	18.1	22.5	44.9	1360.8
GUADALUPE	----	3.2	12.6	2.0	----	327.2
HARDING	502.7	212.1	.3	----	----	238.1
MORA	33.1	----	33.7	11.1	----	826.2
QUAY	6068.9	937.3	9.7	42.8	183.3	1758.9
ROOSEVELT	5113.9	10762.5	2122.9	62.6	855.7	1924.7
SAN MIGUEL	41.8	31.4	5.8	5.1	----	444.4
TORRANCE	239.8	9.8	570.7	13.2	----	1285.2
UNION	1032.1	986.5	2360.3	----	----	1417.5
NORTHEAST DISTRICT	32936.7	25592.0	15835.8	1182.6	1153.5	12452.0
CATRON	----	----	----	----	----	41.6
GRANT	----	157.4	18.8	5.0	----	194.4
HIDALGO	177.1	2125.4	321.3	128.3	682.6	364.5
LUNA	427.3	5726.9	153.0	585.0	2228.1	648.0
SIERRA	40.3	59.0	----	12.4	186.9	581.6
SOCORRO	18.4	110.7	32.9	9.9	----	1811.2
SOUTHWEST DISTRICT	663.1	8179.4	526.0	740.6	3097.6	3641.3
CHAVES	15.6	1119.3	67.3	532.8	4084.2	12760.2
DONA ANA	1116.0	257.1	19.5	378.0	7649.9	3697.9
EDDY	758.5	211.6	----	261.3	3948.3	6269.4
LEA	252.0	2691.2	1198.5	284.5	929.6	2392.2
LINCOLN	----	2.5	4.7	----	----	73.4
OTERO	----	43.1	----	39.2	410.9	774.5
SOUTHEAST DISTRICT	2142.1	4324.8	1290.0	1495.8	17022.9	25967.6
STATE	36223.0	38130.0	17850.0	3654.0	21274.0	52902.0

1/ FOR SOME CROPS, COUNTY VALUES WILL NOT ADD TO DISTRICT OR STATE TOTALS. COUNTY VALUES ARE BASED ON SEASON AVERAGE PRICE FOR THE STATE.
 2/ PRELIMINARY. 3/ OTHER CROPS INCLUDE: BROOMCORN, PROCESSING TOMATOES, APPLES, PECANS, SUGAR BEETS AND PROCESSING CHILI.

CROP VALUES: FARM VALUES OF PRODUCTION OF PRINCIPAL CROPS, BY COUNTIES, 1975 1/ 2/

COUNTY	POTATOES	PEANUTS	EARLY SPRING AND EARLY FALL LETTUCE	ONIONS	OTHER CROPS <u>3/</u>	TOTAL
-----1,000 DOLLARS-----						
BERNALILLO	-----	-----	-----	-----	-----	1040.7
MCKINLEY	-----	-----	-----	-----	-----	132.2
RIO ARRIBA	-----	-----	-----	-----	-----	1287.1
SANDOVAL	-----	-----	13.7	-----	-----	887.4
SAN JUAN	69.0	-----	-----	-----	-----	3249.0
SANTA FE	144.2	-----	79.5	-----	-----	1262.0
TAOS	-----	-----	-----	-----	-----	1284.6
VALENCIA	-----	-----	171.2	104.3	-----	3228.1
NORTHWEST DISTRICT	255.0	-----	264.4	104.3	-----	12412.9
COLFAX	-----	-----	-----	-----	-----	1604.6
CURRY	279.3	11.2	-----	125.6	-----	45426.5
DE BACA	-----	-----	-----	-----	-----	2048.4
GUADALUPE	-----	-----	-----	-----	-----	345.0
HARDING	-----	-----	-----	-----	-----	953.2
MORA	-----	-----	-----	-----	-----	904.1
QUAY	-----	27.3	-----	-----	-----	9028.2
ROOSEVELT	622.2	4260.2	-----	237.1	-----	25961.8
SAN MIGUEL	-----	-----	-----	-----	-----	528.5
TORRANCE	826.5	-----	269.3	-----	-----	3214.5
UNION	-----	-----	-----	-----	-----	5796.4
NORTHEAST DISTRICT	1728.9	4298.7	269.3	326.7	-----	95812.2
CATRON	-----	-----	-----	-----	-----	41.6
GRANT	-----	-----	-----	-----	-----	375.6
HIDALGO	-----	-----	-----	-----	-----	3799.2
LUNA	-----	1.5	-----	-----	-----	9769.8
SIERRA	-----	-----	-----	-----	-----	880.2
SOCORRO	-----	-----	-----	155.4	-----	2138.5
SOUTHWEST DISTRICT	-----	1.5	919.5	2462.7	-----	20231.7
CHAVES	-----	-----	-----	87.9	-----	18667.3
DONA ANA	-----	-----	5920.8	11882.0	-----	30921.2
EDDY	-----	-----	-----	-----	-----	11449.1
LEA	-----	132.8	-----	879.4	-----	8760.2
LINCOLN	-----	-----	-----	-----	-----	80.6
OTERO	-----	-----	-----	-----	-----	1267.7
SOUTHEAST DISTRICT	-----	132.8	5920.8	12849.3	-----	71146.1
STATE	1995.0	4433.0	7374.0	15779.0	15296.0	214910.0

1/ SEE FOOTNOTE PREVIOUS PAGE. 2/ SEE FOOTNOTE PREVIOUS PAGE. 3/ SEE FOOTNOTE PREVIOUS PAGE.

LIVESTOCK INVENTORY VALUES: FARM INVENTORY VALUE OF SPECIFIED SPECIES OF LIVESTOCK BY COUNTIES, JANUARY 1, 1975 1/ 2/

COUNTY	ALL CATTLE <u>3/</u>	HOGS <u>4/</u>	ALL SHEEP	CHICKENS <u>4/</u>	TOTAL
-----1,000 DOLLARS-----					
BERNALILLO	4050.0	27.3	147.9	720.4	4945.6
MCKINLEY	2565.0	11.7	2294.8	1.8	4873.3
RIO ARRIBA	6075.0	11.7	510.0	4.5	6601.2
SANDOVAL	2295.0	3.9	109.7	1.8	2410.4
SAN JUAN	4725.0	27.3	1912.4	9.9	6674.6
SANTA FE	4050.0	7.8	5.1	3.6	4066.5
TAOS	1890.0	23.4	433.5	5.4	2352.3
VALENCIA	6075.0	66.3	897.6	9.0	7047.9
NORTHWEST DISTRICT	31725.0	179.4	6311.0	756.4	38971.8
COLFAX	8370.0	42.9	102.0	6.3	8521.2
CURRY	14850.0	144.3	76.5	11.0	15081.8
DE BACA	5130.0	78.0	433.5	10.1	5651.6
GUADALUPE	7020.0	27.3	816.0	3.1	7866.4
HARDING	6075.0	11.7	25.5	2.9	6115.1
MORA	3780.0	15.6	102.0	3.4	3901.0
QUAY	14850.0	163.8	51.0	5.4	15070.2
ROOSEVELT	12015.0	300.3	76.5	61.5	12453.3
SAN MIGUEL	7425.0	19.5	51.0	21.4	7516.9
TORRANCE	4995.0	58.5	433.5	4.0	5491.0
UNION	22680.0	93.6	25.5	7.2	22806.3
NORTHEAST DISTRICT	107190.0	955.5	2193.0	136.3	110474.8
CATRON	7155.0	11.7	-----	2.3	7169.0
GRANT	8100.0	7.8	-----	4.5	8112.3
HIDALGO	6750.0	339.3	-----	1.6	7090.9
LUNA	5265.0	124.8	-----	2.3	5392.1
SIERRA	4725.0	85.8	-----	1.6	4812.4
SOCORRO	6885.0	11.7	-----	4.9	6901.6
SOUTHWEST DISTRICT <u>5/</u>	38880.0	581.1	234.6	17.2	39712.9
CHAVES	19035.0	468.0	2753.8	18.0	22274.8
DONA ANA	4725.0	109.2	7.7	1205.7	6047.6
EDDY	9045.0	140.4	828.8	14.4	10028.6
LEA	11475.0	89.7	153.0	18.0	11735.7
LINCOLN	5265.0	7.8	2549.8	2.5	7825.1
OTERO	4860.0	42.9	395.3	4.5	5302.7
SOUTHEAST DISTRICT	54405.0	858.0	6688.4	1263.1	63214.5
STATE	232200.0	2574.0	15427.0	2173.0	252374.0

1/ LIVESTOCK INVENTORY VALUES FOR INDIVIDUAL COUNTIES ARE BASED ON THE STATE AVERAGE PER HEAD. 2/ REVISED. 3/ INCLUDES MILK COWS.
4/ DECEMBER 1, 1974. 5/ DISTRICT TOTAL INCLUDES COUNTIES FOR WHICH SEPARATE ESTIMATES WERE NOT MADE.

LIVESTOCK INVENTORY VALUES: FARM INVENTORY VALUE OF SPECIFIED SPECIES OF LIVESTOCK BY COUNTIES, JANUARY 1, 1976 1/

COUNTY	ALL CATTLE <u>2/</u>	HOGS <u>3/</u>	ALL SHEEP	CHICKENS <u>3/</u>	TOTAL
-----1,000 DOLLARS-----					
BERNALILLO	4785.0	49.7	213.5	680.3	5728.5
MCKINLEY	3300.0	21.3	2933.0	3.4	6257.7
RIO ARRIBA	7260.0	14.2	714.0	3.4	7991.6
SANDOVAL	2805.0	7.1	157.5	1.7	2971.3
SAN JUAN	5445.0	35.5	1981.0	6.0	7467.5
SANTA FE	4950.0	14.2	7.0	1.7	4972.9
TAOS	1980.0	28.4	612.5	3.4	2624.3
VALENCIA	6600.0	106.5	1309.0	6.8	8022.3
NORTHWEST DISTRICT	37125.0	276.9	7927.5	706.7	46036.1
COLFAX	10230.0	78.1	147.0	4.3	10459.4
CURRY	18150.0	213.0	115.5	7.0	18485.5
DE BACA	6270.0	35.5	602.0	6.1	6913.6
GUADALUPE	8580.0	49.7	1085.0	1.7	9716.4
HARDING	7755.0	21.3	38.5	1.7	7816.5
MORA	4785.0	35.5	140.0	1.7	4962.2
QUAY	14520.0	213.0	73.5	3.4	14809.9
ROOSEVELT	11550.0	355.0	154.0	69.6	12128.6
SAN MIGUEL	9075.0	28.4	66.5	13.6	9183.5
TORRANCE	6105.0	35.5	637.0	1.7	6779.2
UNION	27720.0	156.2	38.5	3.4	27918.1
NORTHEAST DISTRICT	124740.0	1221.2	3097.5	114.2	129172.9
CATRON	8745.0	21.3	-----	1.5	8767.8
GRANT	9900.0	14.2	-----	2.6	9916.8
HIDALGO	8085.0	-----	-----	1.5	8086.5
LUNA	6435.0	-----	-----	1.5	6346.5
SIERRA	5775.0	142.0	-----	1.5	5918.5
SOCORRO	8415.0	21.3	-----	3.0	8439.3
SOUTHWEST DISTRICT <u>4/</u>	47355.0	1086.3	332.5	11.6	48785.4
CHAVES	22935.0	539.6	3846.5	10.2	27331.3
DONA ANA	5610.0	142.0	10.5	1625.9	7388.4
EDDY	11385.0	284.0	1162.0	10.2	12841.2
LEA	11055.0	142.0	196.0	15.1	11408.1
LINCOLN	6435.0	14.2	3566.5	1.7	10017.4
OTERO	5610.0	56.8	511.0	3.4	6181.2
SOUTHEAST DISTRICT	63030.0	1178.6	9292.5	1666.5	75167.6
STATE	272250.0	3763.0	20650.0	2499.0	299162.0

1/ LIVESTOCK INVENTORY VALUES FOR INDIVIDUAL COUNTIES ARE BASED ON THE STATE AVERAGE PRICE PER HEAD. 2/ INCLUDES MILK COWS.
3/ DECEMBER 1, 1975. 4/ DISTRICT TOTAL INCLUDES COUNTIES FOR WHICH SEPARATE ESTIMATES WERE NOT MADE.



NEW MEXICO CROP REPORTING DISTRICTS

