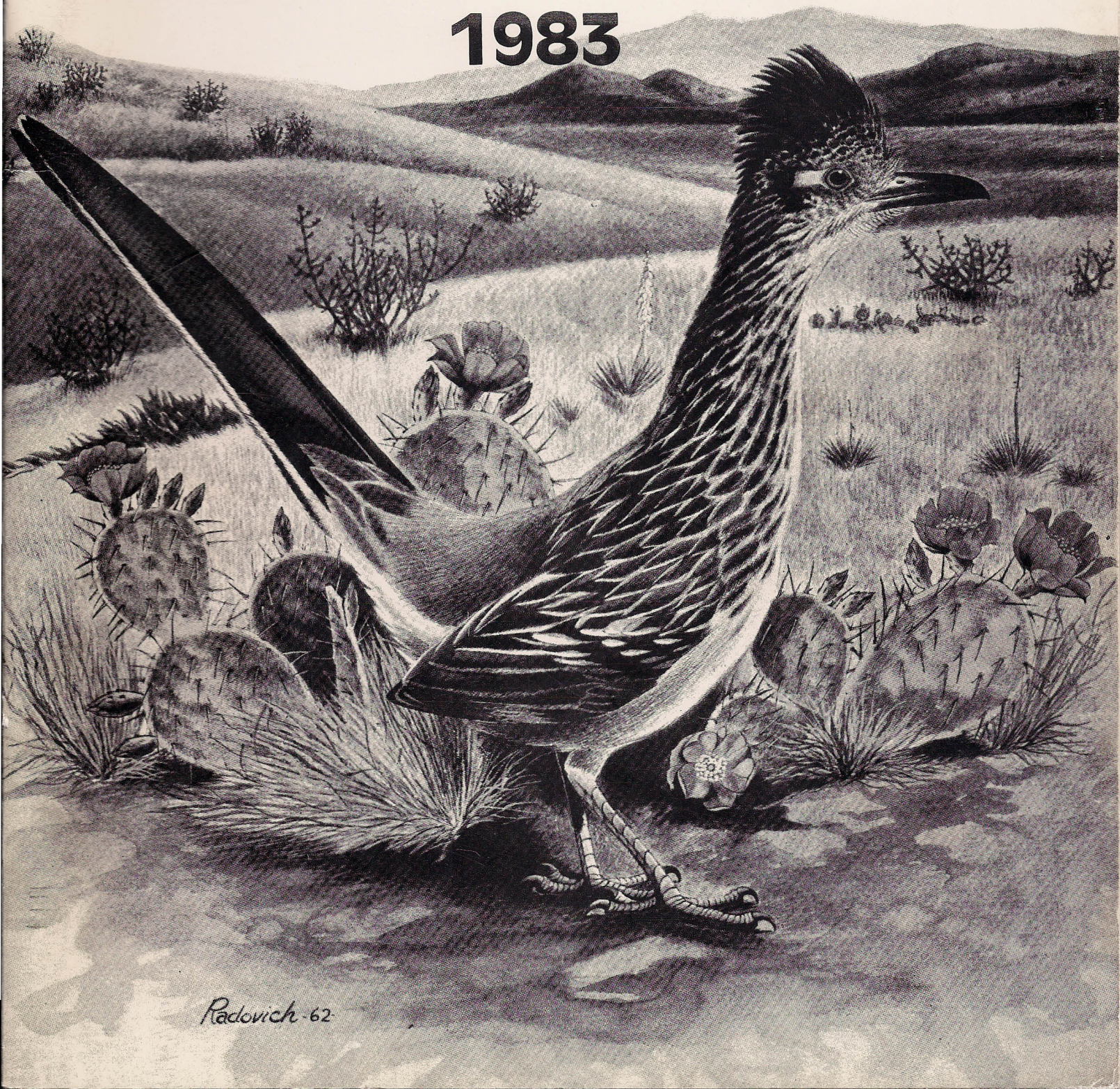




# New Mexico Agricultural Statistics

## 1983



*Radovich-62*

Prepared By

United States Department of Agriculture  
New Mexico Crop and Livestock Reporting Service  
P. O. Box 1809  
Las Cruces, New Mexico 88004

Donald G. Gerhardt, Statistician in Charge  
Craig M. Hayes, Assistant Statistician in Charge

Livestock Statistician  
Martin J. Owens

Crops Statistician  
Herb L. Vanderberry

Surveys Statistician  
Robert L. Todd

Data Processing  
Judy Lawrence

Support Staff

Judy Walker  
Mary Hendon  
Doris Lucht  
Dolores Anaya  
Kimberly Bradley

Photography - Lana Dickson

Issued Cooperatively By

U. S. Department of Agriculture  
Statistical Reporting Service

W. E. Kibler  
Administrator

New Mexico  
Department of Agriculture

William P. Stephens  
Director/Secretary

COVER PHOTOGRAPH: The Roadrunner is officially recognized as the State Bird.

# TABLE OF CONTENTS

## INTRODUCTION

## ACKNOWLEDGEMENT

## GENERAL

New Mexico Map.....	4
Number of Farms and Land in Farms.....	5
Irrigated Cropland and Sources of Water....	6
Acres of Irrigated Cropland.....	7
Usual Planting and Harvesting Dates.....	8
Climate of New Mexico.....	9
Tons of Fertilizer Shipped into NM.....	10
Tons of Feed Sold in NM.....	11

## PRICES AND INCOME

1983 Farm Income Review.....	12
Balance Sheet of Farm Sector.....	13
Income from Farming.....	14
Cash Receipts by Commodity.....	16
Cash Receipts by Commodity and County.....	18
Prices Received for Field Crops.....	28
Prices Received for Livestock.....	28

## LIVESTOCK

1983 Overview.....	30
Cattle and Calves:	
Shipments.....	31
Number and Value.....	32
Production and Income.....	32
Number on Farms and Ranches by Classes...	33
Commercial Slaughter.....	33
Inventory, Calf Crop and Disposition....	34
Range and Pasture Conditions.....	34
Inventory by County.....	35
Number on Feed by County.....	36
Milk Production.....	37
Prices Received for Milk.....	37
Sheep and Lambs:	
Number and Value.....	38
Commercial Slaughter.....	39
Inventory by County.....	39
Production and Income.....	40
Number on Farms by Class.....	40
Number on Feed by County.....	40
Inventory, Lamb Crop and Disposition....	41
Wool Production.....	41
Prices Received for Wool.....	41
Hogs:	
Production and Income.....	42
Number on Farms, Pig Crop & Disposition..	42
Commercial Slaughter.....	43
Inventory by County.....	43

## Poultry:

Number of Chickens by Class.....	44
Eggs and Number of Layers.....	44
Prices Received for Eggs.....	44
Inventory by County.....	45

## FIELD CROPS

1983 Overview.....	46
Principal Crops.....	47
Wheat.....	48
Wheat by County.....	49
All Hay.....	50
All Hay by County.....	50
Alfalfa and Other Hay.....	51
Alfalfa Hay by County.....	51
Sorghum.....	52
Sorghum by County.....	53
Barley.....	54
Barley by County.....	55
Corn.....	56
Corn by County.....	57
Upland Cotton.....	58
Upland Cotton by County.....	58
Cottonseed.....	59
American-Pima Cotton.....	60
American-Pima Cotton by County.....	60
Potatoes.....	61
Potatoes by County.....	61
Peanuts.....	62
Peanuts by County.....	62
Grain Stocks.....	63

## FRUITS, NUTS, AND VEGETABLES

Apples.....	64
Apples by County.....	64
Pecans.....	65
Pecans by County.....	65
Lettuce:	
Prices Received.....	66
Spring.....	66
Fall.....	67
Spring by County.....	67
Fall by County.....	67
Onions:	
Prices Received.....	68
Acreage and Production.....	68
Acreage by County.....	69
Chile:	
Acreage and Production.....	70
Processed.....	71
Acreage by County.....	71
Grapes.....	72



# NEW MEXICO

## CROP AND LIVESTOCK REPORTING SERVICE

P.O. BOX 1809 • LAS CRUCES, NEW MEXICO 88004 • PHONE [505] 523-8168

STATISTICAL REPORTING SERVICE • NEW MEXICO DEPARTMENT OF AGRICULTURE

### ACKNOWLEDGEMENT

The New Mexico Crop and Livestock Reporting Service is pleased to present the 1983 edition of New Mexico Agricultural Statistics. This is the 23rd annual summary in a series which dates back to 1962 and it continues to be our most requested publication.

New Mexico Agricultural Statistics is the most complete accumulation of current statistical data related to agriculture in New Mexico. This issue contains the preliminary series of county estimates for livestock, crop production and cash receipts from agricultural marketings. Also included are State summaries on crop production, livestock inventory numbers, farm and ranch income, agricultural prices, grain storage and weather.

The data presented in this bulletin are developed primarily from sample surveys conducted throughout the year. The accuracy of our estimates is closely related to the responses by farmers and livestock producers to these surveys. Without the excellent cooperation received from New Mexico's farmers and ranchers, livestock producers and agri-business people the estimates presented in this bulletin and other statistical reports throughout the year would not be possible. A special "Thanks" is extended to these voluntary reporters, for without their willingness to provide facts about their operations this publication would not be possible.

We also wish to acknowledge the help we receive from County Extension Agents, University, State and Federal personnel who provide us with valuable information at their respective county meetings. Their insight and knowledge about their counties help us develop county level data for the county estimate program.

The publication of this bulletin is made possible through a cooperative agreement between the New Mexico Department of Agriculture and the Statistical Reporting Service - United States Department of Agriculture. Funds for its reproduction are provided by the New Mexico Department of Agriculture.

In closing, I want to thank the staff of the New Mexico Crop and Livestock Reporting Service, who have put this annual publication together. I also wish to acknowledge their work during the past year in developing estimates of high credibility for the State of New Mexico.

A handwritten signature in cursive script that reads "Donald G. Gerhardt".

Donald G. Gerhardt  
Statistician in Charge

NEW MEXICO DEPARTMENT OF AGRICULTURE

OFFICE OF THE DIRECTOR/SECRETARY  
Box 3189/Las Cruces, New Mexico 88003  
Telephone (505) 646-3007



TO THOSE INTERESTED IN NEW MEXICO'S AGRICULTURE:

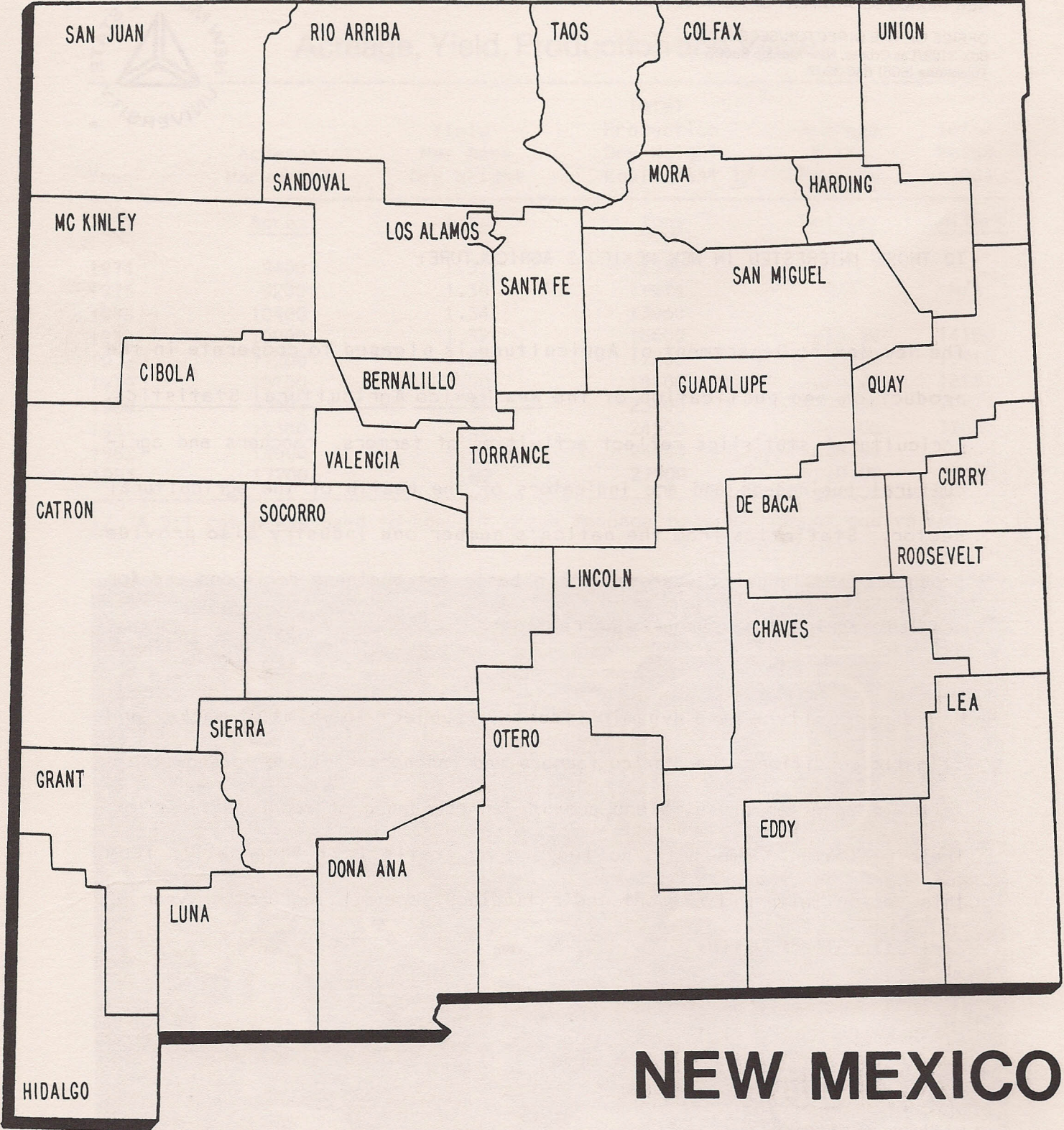
The New Mexico Department of Agriculture is pleased to cooperate in the production and publication of the New Mexico Agricultural Statistics. Agricultural statistics reflect activities of farmers, ranchers and agricultural businesses and are indicators of the health of the agricultural sector. Statistics from the nation's number one industry also provide producers and industry leaders with a basis for business decisions and for possible agricultural program corrections.

While agriculture is a dynamic industry, subject to whims of market and climatic conditions, New Mexico farmers and ranchers continue to show their faith in agrarian pursuits and provide an abundance of food and fiber for their fellowman. Similarly, collectors of statistical information from this sector faithfully report their findings, documenting another year of agricultural activities.

Sincerely,

A handwritten signature in cursive script that reads 'W.P. Stephens'.

William P. Stephens  
Director/Secretary



# NEW MEXICO

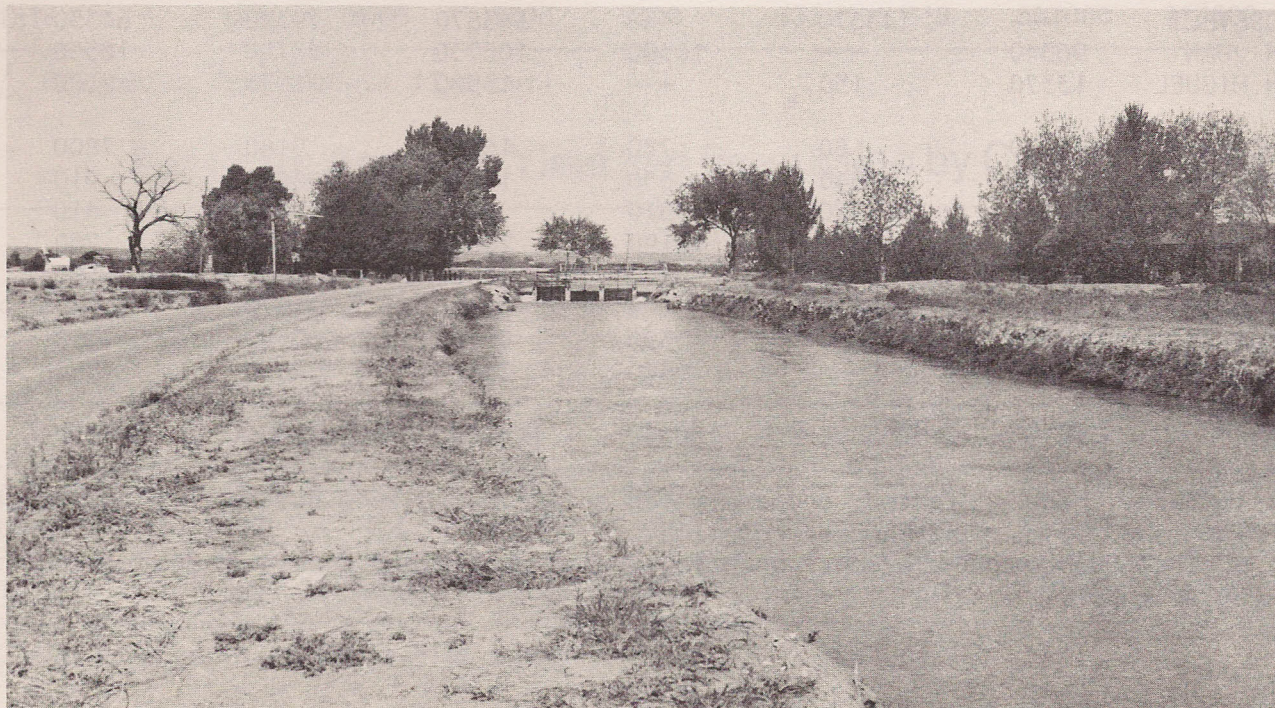
## New Mexico Farm Numbers and Land in Farms

Year	Number of all Farms	Land in all Farms <sup>1/</sup>	Number of Cattle Ranches	Number of Milk Cow Farms	Number of Sheep Ranches	Number of Hog Farms
	1000 Farms	Million Acres	-----Number <sup>2/</sup> -----			
1940	34.1	38.9				
1950	23.6	47.5				
1960	18.2	51.5				
1970	12.4	47.8	9000	2200	1400	1500
1971	12.2	47.6	8800	2100	1300	1600
1972	12.0	47.5	8600	2000	1300	1500
1973	12.0	47.5	8000	1900	1300	1500
1974	12.2	47.0	8500	1500	1200	1700
1975 <sup>3/</sup>	12.0	47.0	8500	1800	1200	1700
1976	12.3	46.9	8500	1800	1300	1700
1977	12.6	46.8	8500	1800	1400	1700
1978	13.0	46.8	8300	1700	1400	1700
1979	13.3	46.8	8100	1700	1400	1900
1980	13.5	46.8	8500	1800	1500	2100
1981	14.0	47.4	9000	1800	1600	1900
1982	13.5	47.4	9500	1700	1600	1700
<b>1983</b>	<b>13.5</b>	<b>47.0</b>	<b>9000</b>	<b>1600</b>	<b>1600</b>	<b>1700</b>

<sup>1/</sup> This does not include approximately 22.2 million acres of BLM & Forest Service land which is leased to farmers and ranchers on a per head basis.

<sup>2/</sup> Includes farms and ranches having one or more head of species.

<sup>3/</sup> NEW DEFINITION beginning in 1975: Farms and ranches with annual sales of \$1000 or more.



# Irrigated Cropland and Sources of Water in New Mexico — 1983 <sup>1/</sup>

County	Source of Water			Total Irrigated Cropland	Total Acres Irrigated	Planted Not Irrigated or Idle and Fallow
	Surface Only	Ground Only	Surface & Ground <sup>2/</sup>			
-----Acres-----						
BERNALILLO	6810	360	3460	10630	9810	820
CATRON	2010	240	370	2620	1600	1020
CHAVES	3260	78970	15590	97820	83170	14650
CIBOLA	6300	500	3880	10680	2000	8680
COLFAX	33200	---	---	33200	18690	14510
CURRY	---	222080	---	222080	100041	122039
DE BACA	6140	7080	---	13220	12320	900
DONA ANA	---	9370	86660	96030	71935	24095
EDDY	15180	35470	25020	75670	63100	12570
GRANT	1840	3380	2470	7690	3710	3980
GUADALUPE	3730	450	---	4180	3750	430
HARDING	---	4670	---	4670	1710	2960
HIDALGO	---	38560	2780	41340	9780	31560
LEA	---	119240	---	119240	33580	85660
LINCOLN	2230	1920	2160	6310	4600	1710
LUNA	10670	61970	1300	73940	32870	41070
McKINLEY	6240	200	---	6440	800	5640
MORA	15460	---	---	15460	14960	500
OTERO	3450	13490	2350	19290	8280	11010
QUAY	40550	14940	---	55490	44420	11070
RIO ARRIBA	40330	500	280	41110	30120	10990
ROOSEVELT	---	143670	---	143670	79320	64350
SAN JUAN	96340	---	10390	106730	88180	18550
SAN MIGUEL	13370	150	---	13520	11020	2500
SANDOVAL	16100	80	780	16960	9160	7800
SANTA FE	5850	11340	650	17840	16930	910
SIERRA	660	3120	5510	9290	8880	410
SOCORRO	3330	1310	16190	20830	20570	260
TAOS	35900	5230	770	41900	32400	9500
TORRANCE	---	38110	---	38110	21270	16840
UNION	8310	49000	390	57700	50580	7120
VALENCIA	18930	---	9640	28570	24320	4250
<b>STATE</b>	<b>396190</b>	<b>865400</b>	<b>190640</b>	<b>1452230</b>	<b>913876</b>	<b>538354</b>

<sup>1/</sup> Includes crops irrigated, crops planted on irrigated land but not irrigated, and idle and fallow land in crop rotation.

<sup>2/</sup> Surface and ground are considered to furnish a combined source of irrigation water supply.



## Acres of Irrigated Cropland in New Mexico <sup>1/</sup>

County	1950	1960	1970	1980	1981	1982	1983
BERNALILLO	18000	16000	13240	10630	10630	10630	<b>10630</b>
CATRON	2640	2800	2700	2620	2620	2620	<b>2620</b>
CHAVES	89100	97600	100100	98720	97820	97820	<b>97820</b>
CIBOLA	---	---	---	---	10680	10680	<b>10680</b>
COLFAX	33140	36740	34780	33200	33200	33200	<b>33200</b>
CURRY	3010	95000	190000	222080	222080	222080	<b>222080</b>
DE BACA	6190	7970	9790	13220	13220	13220	<b>13220</b>
DONA ANA	86000	94000	97330	95730	95730	95730	<b>96030</b>
EDDY	71450	73000	74610	76440	75670	75670	<b>75670</b>
GRANT	7980	8750	8010	7060	7340	7710	<b>7690</b>
GUADALUPE	3250	3500	3830	4180	4180	4180	<b>4180</b>
HARDING	100	1800	6270	4670	4670	4670	<b>4670</b>
HIDALGO	10820	25400	35240	41420	41420	41340	<b>41340</b>
LEA	61440	85820	99000	119240	119240	119240	<b>119240</b>
LINCOLN	5000	5600	5800	6310	6310	6310	<b>6310</b>
LUNA	33110	42610	71460	73940	73940	73940	<b>73940</b>
McKINLEY	6240	6440	6440	6440	6440	6440	<b>6440</b>
MORA	19900	18000	18000	15460	15460	15460	<b>15460</b>
OTERO	11730	15300	17100	19290	19290	19290	<b>19290</b>
QUAY	32600	41700	50620	55490	55490	55490	<b>55490</b>
RIO ARRIBA	40330	40330	41110	41110	41110	41110	<b>41110</b>
ROOSEVELT	34390	74000	103700	138240	143670	143670	<b>143670</b>
SAN JUAN	50390	55250	59700	88350	96340	106730	<b>106730</b>
SAN MIGUEL	15000	13500	13500	13520	13520	13520	<b>13520</b>
SANDOVAL	16240	16240	16270	16960	16960	16960	<b>16960</b>
SANTA FE	10400	12000	15840	17840	17840	17840	<b>17840</b>
SIERRA	7000	8000	8840	9110	9110	9110	<b>9290</b>
SOCORRO	14500	16700	17820	20630	20630	20830	<b>20830</b>
TAOS	37580	41900	41900	41900	41900	41900	<b>41900</b>
TORRANCE	11180	20000	33330	37280	38110	38110	<b>38110</b>
UNION	11800	25910	39710	57700	57700	57700	<b>57700</b>
VALENCIA	39580	42140	43690	39250	28570	28570	<b>28570</b>
STATE	790090	1044000	1279730	1428030	1440890	1451770	<b>1452230</b>

<sup>1/</sup> Excludes farmsteads, feedlots, roads, and ditches. Includes idle, fallow and diverted acreage.

SOURCE: Tables compiled by the New Mexico State Engineers Office.

## Usual Planting and Harvesting Dates

Crop	1983 Harvested Acreage	Usual Planting Dates	Usual Harvesting Dates			Principal Counties
			Begins	Most Active	Ends	
(1000 Acres)						
<b>FIELD CROPS:</b>						
BARLEY	23.0					
FALL SOWN		SEP 1-OCT 15	JUN 10	JUN 20-JUL 10	JUL 20	CURRY-SAN JUAN-CHAVES
SPRING SOWN		FEB 15-APR 1	JUN 15	JUN 20-JUL 10	AUG 1	LUNA-DONA ANA-EDDY
CORN, ALL	69.0	APR 15-MAY 20	SEP 25	OCT 5-OCT 30	NOV 20	TORRANCE-SAN JUAN-UNION
COTTON	58.1	APR 10-MAY 20	OCT 10	OCT 25-NOV 30	DEC 20	CURRY-ROOSEVELT
HAY, ALFALFA	250.0		MAY 1		OCT 20	CHAVES-DONA ANA-EDDY
PEANUTS FOR NUTS	11.0	MAY 10-JUN 1	OCT 5	OCT 10-OCT 25	NOV 10	SAN JUAN-VALENCIA
SORGHUM						ROOSEVELT
GRAIN	150.0	MAY 10-JUL 1	OCT 15	OCT 20-NOV 15	DEC 15	
SILAGE	16.0	MAY 10-JUN 20	SEP 5	SEP 15-OCT 10	OCT 20	CURRY-QUAY-ROOSEVELT
WHEAT	470.0					
WINTER		AUG 25-OCT 15	JUN 15	JUN 20-JUL 10	JUL 20	CURRY-QUAY-ROOSEVELT
DURUM		JAN 1-FEB 20	JUN 20	JUN 20-JUL 15	JUL 20	DONA ANA
<b>VEGETABLES:</b>						
CHILE PEPPERS	17.2					
RED		MAR 1-APR 1	OCT 1	OCT-NOV	DEC 15	EDDY-SIERRA
GREEN		MAR 1-APR 1	AUG 1	AUG-SEP	OCT 15	DONA ANA-LUNA
LETTUCE						
SPRING	2.3	JAN 15-FEB 1	APR 25	MAY 1-MAY 15	JUN 5	
FALL	3.0	AUG 1-AUG 20	OCT 5	OCT 10-NOV 10	NOV 15	DONA ANA-LUNA-SIERRA
ONIONS	3.9					
GRANO		OCT 1-OCT 15	MAY 25	JUN 1-JUL 1	JUL 25	
SWEET SPANISH		JAN 20-MAR 15	JUL 15	JUL 15-AUG 15	OCT 1	DONA ANA-LUNA
POTATOES	5.7	MAR 5-APR 1	JUL 15	AUGUST	SEP 15	CURRY-ROOSEVELT
		APR 20-MAY 10	SEP 1	SEP 20-OCT 1	OCT 20	SAN JUAN-TORRANCE
<b>FRUITS:</b>						
APPLES						
NORTH	---		SEP 1	SEP 1-OCT 20	OCT 30	RIO ARRIBA-SAN JUAN
						BERNALILLO-SANDOVAL
						SANTA FE
SOUTH	---		AUG 15	SEP 1-OCT 15	OCT 30	DONA ANA-LINCOLN
						CHAVES-OTERO-SIERRA
<b>NUTS:</b>						
PECANS	---		NOV 1	NOV 15-DEC 31	JAN 1	DONA ANA-CHAVES-EDDY

## Climate of New Mexico, 1983

COUNTY	STATION	FREEZE DATA YEARS OF RECORD	AVERAGE FIRST FALL DATE OF 32 DEGREES	AVERAGE LAST SPRING DATE OF 32 DEGREES	AVERAGE NUMBER OF DAYS BETWEEN DATES	ELEVA- TION IN FEET	PRECIPITATION (IN INCHES)	
							AVERAGE 1951-1980	1983
BERNALILLO	ALBUQUERQUE AIRPORT	51	OCT. 29	APR. 16	198	5311	8.12	7.76
SANDOVAL	JEMEZ SPRINGS	60	OCT. 20	MAY 1	173	6250	15.67	16.46
SAN JUAN	FRUITLAND	58	OCT. 7	MAY 10	151	5145	7.64	9.67
	AZTEC	59	OCT. 9	MAY 11	152	5640	9.31	13.41
SANTA FE	SANTA FE COLLEGE 1/	95	OCT. 13	MAY 8	159	7200	13.83	11.61
TAOS	TAOS	70	OCT. 3	MAY 17	139	6945	12.23	13.02
VALENCIA	LOS LUNAS 1/	71	OCT. 18	APR. 24	177	4840	7.90	8.97
COLFAX	RATON 1/	18	OCT. 6	MAY 11	152	6933	16.34	13.38
	SPRINGER	75	OCT. 5	MAY 8	150	5857	14.88	11.61
CURRY	CLOVIS	72	OCT. 27	APR. 17	193	4280	16.48	13.01
	MELROSE	29	OCT. 22	APR. 18	187	4599	14.83	12.18
DE BACA	FT. SUMNER	59	OCT. 23	APR. 18	188	4030	12.79	10.40
	SUMNER LAKE 1/	33	OCT. 28	APR. 15	197	4306	12.44	9.84
GUADALUPE QUAY	SANTA ROSA	61	OCT. 25	APR. 17	191	4620	13.56	11.48
	TUCUMCARI	78	OCT. 26	APR. 20	190	4096	14.49	13.51
ROOSEVELT	SAN JON	64	OCT. 25	APR. 22	186	4230	15.44	15.85
	PORTALES	59	OCT. 19	APR. 23	179	4010	15.34	10.04
SAN MIGUEL	ELIDA	31	OCT. 25	APR. 15	192	4245	13.23	11.36
	LAS VEGAS AIRPORT	34	OCT. 7	MAY 13	149	6857	14.99	13.65
TORRANCE UNION	BELL RANCH	67	OCT. 22	APR. 22	184	4500	13.08	11.25
	ESTANCIA	51	OCT. 1	MAY 20	134	6107	11.54	14.70
CATRON	CLAYTON	76	OCT. 14	MAY 2	165	4970	14.12	11.40
	DES MOINES	55	OCT. 3	MAY 15	143	6632	16.83	15.21
GRANT	QUEMADO	41	SEPT. 24	JUNE 8	108	6879	9.89	15.51
	FT. BAYARD	85	OCT. 24	APR. 28	179	6142	14.19	17.15
HIDALGO	HACHITA	53	NOV. 3	APR. 15	203	4495	9.71	16.39
	LORDSBURG	44	NOV. 4	APR. 6	214	4250	10.40	17.50
LUNA	ANIMAS	43	OCT. 28	APR. 24	187	4415	10.61	17.35
	DEMING AIRPORT 1/	10	OCT. 28	APR. 25	188	4301	8.56	9.72
SIERRA	CABALLO DAM	35	NOV. 4	APR. 7	212	4190	8.71	9.50
	WINSTON	25	OCT. 7	MAY 15	147	6200	12.66	11.30
SOCORRO	HILLSBORO	29	OCT. 26	APR. 18	193	5270	12.05	15.08
	SOCORRO	75	OCT. 24	APR. 13	195	4585	8.63	10.24
CHAVES	AUGUSTINE	40	SEPT. 26	MAY 31	119	7020	9.64	15.48
	ROSWELL	80	OCT. 27	APR. 11	199	3636	9.70	10.03
DONA ANA	ELK	60	OCT. 16	APR. 30	169	5700	15.58	9.12
	STATE UNIVERSITY	80	OCT. 28	APR. 9	202	3881	8.31	7.28
EDDY	HATCH	58	OCT. 24	APR. 12	196	4052	9.58	8.92
	CARLSBAD	75	NOV. 5	APR. 2	217	3120	11.94	10.91
LEA	ARTESIA	63	OCT. 28	APR. 12	199	3320	10.67	15.26
	HOBBS	52	NOV. 4	APR. 8	210	3615	14.77	13.97
LINCOLN	JAL	30	NOV. 3	APR. 2	215	3150	11.56	12.39
	CARRIZOZO	73	OCT. 7	MAY 7	153	6220	12.61	11.11
OTERO	CORONA 1/	58	OCT. 13	MAY 6	161	6664	14.96	13.42
	ALAMOGORDO	34	NOV. 2	APR. 7	209	5350	11.18	12.33

1/ Average annual precipitation calculated using years 1941-1970.

SOURCE: National Oceanic and Atmospheric Administration, National Weather Service Office for State Climatology.

# Fertilizer

## 1983 Inshipments

Fertilizer shipped into New Mexico in 1983 increased 2 percent from 1982 despite acreage reductions encouraged by the PIK program. Nitrogen materials shipped into the State increased slightly from last year totaling 63,973.6 tons. Phosphate shipments were up 4 percent from 1982 totaling 25,650 tons. Potash and fertilizer mixtures showed the largest percentage increases, 45 and 50 percent respectively. The only two classifications showing declines in shipments from the previous year were natural organic materials, down 75 percent, and miscellaneous fertilizers, down 5.5 percent.

### Fertilizer Shipped into New Mexico, 1983

Materials	First Quarter	Second Quarter	Third Quarter	Fourth Quarter	Total 1983
-----Tons-----					
<b>NITROGEN MATERIALS:</b>					
Anhydrous Ammonia	2293.00	5694.70	4495.20	928.80	<b>13411.70</b>
Ammonium Nitrate	1669.00	525.20	3226.50	3853.60	<b>9274.30</b>
Ammonium Sulphate	1825.60	2146.80	1479.80	736.40	<b>6188.60</b>
Nitrogen Solution	1827.20	10560.40	7979.00	346.40	<b>20713.00</b>
Urea	2098.10	2908.70	2059.60	904.70	<b>7971.10</b>
Primary Nutrient-Nitrogen	1620.30	1929.30	1810.70	1054.60	<b>6414.90</b>
<b>PHOSPHATE MATERIALS:</b>					
Superphosphate -- 45% and 46%	2766.80	971.10	179.70	445.10	<b>4362.70</b>
Primary Nutrient-P <sub>2</sub> O <sub>5</sub>	9671.40	5989.50	3336.30	2290.10	<b>21287.30</b>
<b>POTASH MATERIALS:</b>					
Muriate of Potash	1284.20	761.00	339.20	88.60	<b>2473.00</b>
Sulphate of Potash	357.60	206.10	398.70	27.10	<b>989.50</b>
Sulphate of Potash Magnesia	2115.60	1311.10	901.30	258.80	<b>4586.80</b>
Primary Nutrient-K <sub>2</sub> O	106.80	192.70	39.10	6.10	<b>344.70</b>
<b>MIXTURES</b>	112.60	435.70	320.50	108.70	<b>977.50</b>
<b>NATURAL ORGANIC</b>	229.70	136.80	38.90	34.70	<b>440.10</b>
<b>MISCELLANEOUS</b>	1893.20	3973.80	1591.60	701.00	<b>8159.60</b>
<b>TOTAL</b>	<b>29871.10</b>	<b>37742.90</b>	<b>28196.10</b>	<b>11784.70</b>	<b>107594.80</b>

# Feed

## Commercial Feed Sold in New Mexico , 1983

Kind of Feed	Jan. - June		July - Dec.		Totals for 1983		All Feed 1983
	Sacked	Bulk	Sacked	Bulk	Sacked	Bulk	
-----Tons-----							
ALFALFA PRODUCTS	6844	10410	6315	5561	13159	15971	<b>29130</b>
ANIMAL BY-PRODUCTS	12	1755	16	3893	28	5648	<b>5676</b>
BARLEY PRODUCTS	508	3246	528	4370	1036	7616	<b>8652</b>
CORN PRODUCTS	2413	13492	1706	11589	4119	25081	<b>29200</b>
COTTONSEED PRODUCTS	4163	15013	1740	4616	5903	19629	<b>25532</b>
GRAIN SORGHUM PRODUCTS	3418	4932	2396	7941	5814	12873	<b>18687</b>
MOLASSES	3829	16940	-0-	30524	3829	47464	<b>51293</b>
MOLASSES-UREA FEED	4	118	2642	2178	2646	2296	<b>4942</b>
OAT PRODUCTS	905	1115	1780	38	2685	1153	<b>3838</b>
WHEAT PRODUCTS	881	522	916	7506	1797	8028	<b>9825</b>
CATTLE FEEDS	29543	41831	24341	37031	53884	78862	<b>132746</b>
DAIRY FEEDS	5205	8077	4800	7237	10005	15314	<b>25319</b>
FISH FEEDS	127	-0-	-0-	-0-	127	-0-	<b>127</b>
HORSE FEEDS	7537	1405	5675	977	13212	2382	<b>15594</b>
SWINE FEEDS	2627	1084	1978	664	4605	1748	<b>6353</b>
MINERAL FEEDS	2873	1579	3682	3203	6555	4782	<b>11337</b>
POULTRY FEEDS	5559	1917	4962	3471	10521	5388	<b>15909</b>
RABBIT FEEDS	1125	60	1180	283	2305	343	<b>2648</b>
TURKEY FEEDS	30	-0-	8	4	38	4	<b>42</b>
SHEEP FEEDS	516	73	602	1	1118	74	<b>1192</b>
PET FOODS	8059	942	7860	948	15919	1890	<b>17809</b>
OTHER MIXED FEEDS	-0-	-0-	209	-0-	209	-0-	<b>209</b>
CUSTOM MIXED FEEDS	1666	4791	1555	6100	3221	10891	<b>14112</b>
RICE MILL BY-PRODUCTS	23	239	-0-	256	23	495	<b>518</b>
SOFT ROCK PHOSPHATE	536	1427	343	895	879	2322	<b>3201</b>
SOYBEAN PRODUCTS	6	2515	923	4743	929	7258	<b>8187</b>
UREA-FEED GRADE	3270	145	8	95	3278	240	<b>3518</b>
MISCELLANEOUS	1061	34	74	5	1135	39	<b>1174</b>
<b>TOTAL TONNAGE</b>	<b>92740</b>	<b>133662</b>	<b>76239</b>	<b>144129</b>	<b>168979</b>	<b>277791</b>	<b>446770</b>

# Prices and Income

**ASSETS and DEBTS** - Farm and ranch assets totaled \$11.1 billion in 1983, 4 percent below 1982 and the first reduction in assets recorded since 1957. Diminished real estate value was the major reason for the drop in assets as land values fell 5 percent from the previous year. Farm and ranch debts continued to climb in 1983 reaching an all time high of \$1.4 billion. Real estate accounted for 56 percent of all debt, compared to 58 percent in 1982.

**CASH RECEIPTS** - The 1983 cash receipts from farm marketings in New Mexico was \$964.0 million dollars, up 1.5 percent from 1982. Livestock and livestock products accounted for 65.8 percent of the total and were valued at \$634.7 million. Crops, valued at \$329.3 million, represented 34.2 percent of the cash receipts. Cattle and calves continue to dominate all other commodities accounting for 46.8 percent of the cash receipts. Milk was second with 14.3 percent, while hay remained third with 7.4 percent of the receipts. Wheat, cotton products and chile ranked fourth through sixth, respectively, representing 4.9, 3.7 and 3.5 percent of all cash receipts. Sales from these six commodities make up 73.2 percent of all cash receipts from New Mexico farm marketings.

**FARM INCOME CONCEPTS** - Cash receipts from farm marketings represent gross income from the sales of crops, livestock, and poultry during the calendar year. The value of home consumption of farm products, inter-farm sales of livestock, and crops fed on farms where grown are not included in cash receipts. Production expenses such as feed, fuel, and fertilizer, and marketing costs are not subtracted from gross cash receipts. County estimates of cash receipts reflect farm productivity of the county to which the income is assigned. For example, income from crops is credited to the producing county even though the crops may be stored, processed, and marketed in another county. Cash receipts from marketings of crops is the final product of several estimates: acreage, yield, percentage of total production sold, average price, and changes in inventories. Marketings of livestock and poultry include the sales value of an animal only once, usually at the time when the animal is sold for slaughter or at final disposition.

Gross farm income includes four principal components: cash receipts from farm marketings, government payments, other farm income, and non-money income. Cash receipts represent gross receipts from commercial market sales as well as loans made or guaranteed by the CCC and other purchases under price support programs. Government payments to farmers are those payments made directly to farm producers in connection with farm programs. Other farm income is cash income from such sources as recreation, machine hire, and custom work. Non-money income includes the rental value of housing provided by farm dwellings and the value of farm products consumed directly in farm households.

Farm production expenses include current farm operating expenses for such items as wages paid to hired farm workers, outlays for repairs of farm equipment and operation of the farm, as well as purchases of oil, feed, and livestock. Overhead-type costs include charges for depreciation and other capital consumption, taxes on farm property, and interest.

Net change in farm inventories is the estimated physical change in livestock and crops owned by farmers, valued at average prices prevailing during the year.

## Balance Sheet of New Mexico Farming Sector <sup>1/</sup>

Item	1981	1982	1983 <sup>2/</sup>
		<u>Number</u>	
Farms	14,000	13,500	13,500
<b>ASSETS</b>		<u>Million Dollars</u>	
Total Farm Assets	11,209.8	11,645.3	11,147.2
Real Estate	9,622.2	10,001.4	9,480.0
Livestock and Poultry	608.9	548.9	528.5
Machinery and Motor Vehicles	478.0	496.7	506.4
Crops <sup>3/</sup>	64.4	119.2	109.9
Household Equip. and Furnishings	177.9	201.5	219.3
Deposits and Currency	103.6	104.8	108.8
U.S. Savings Bonds	9.4	8.7	8.4
Investments in Cooperatives	145.4	164.1	185.9
<b>CLAIMS</b>			
Total Farm Debt	1,247.8	1,334.9	1,424.3
Real Estate Debt	713.2	770.0	800.5
Nonreal Estate Debt <sup>4/</sup>	529.7	537.0	558.8
CCC Loans <sup>5/</sup>	5.0	28.0	65.0
Equity	9,962.0	10,310.4	9,723.0
<b>RATIOS</b>		<u>Ratios</u>	
Equity/Assets	88.9	88.5	87.2
Debt/Equity	12.5	12.9	14.6
Debt/Assets, Total	11.1	11.5	12.8
Debt/Assets, Real Estate	7.4	7.7	8.4
Debt/Assets, Nonreal Estate and CCC	33.7	34.4	37.4
Net Farm Income/Debt	7.3	5.6	N/A

<sup>1/</sup> Data are for farms with sales of \$1,000 or more annually and includes farm households. Details may not add to totals due to rounding.

<sup>2/</sup> Preliminary.

<sup>3/</sup> All crops held on farms including crops under CCC and crops held off farms by farm operators.

<sup>4/</sup> Includes debt owed to institutional lenders and to noninstitutional or miscellaneous lenders.

<sup>5/</sup> Nonrecourse CCC loans secured by crops owned by farmers. These crops are included as assets.

SOURCE: USDA. Economic Research Service Publication, ECIFS 2-4, January, 1984.

## Realized Gross Income and Net Income from Farming in New Mexico<sup>1/</sup>

Year	Realized Gross Farm Income					Farm Production Expenses	Realized Net Farm Income <u>2/</u>	Net Change In Farm Inventories	Total Net Farm Income <u>2/</u>
	Cash Receipts From Farm Marketings	Government Payments	Non- Money Income	Other Farm Income	Total				
-----Million Dollars-----									
1951	243.9	2.9	18.4	.1	265.3	165.6	99.7	19.0	118.7
1952	216.7	1.7	19.7	.1	238.4	165.3	73.1	9.9	83.0
1953	192.7	1.2	18.9	.2	212.9	151.1	61.8	-16.1	45.7
1954	187.7	2.8	16.8	.2	207.5	140.6	66.9	-4.2	62.7
1955	163.7	2.1	16.5	.3	182.6	148.4	34.2	14.4	48.6
1956	199.4	5.7	14.5	.4	220.0	147.1	72.9	-23.1	49.7
1957	191.9	15.0	13.0	.6	220.4	152.3	68.1	-.3	67.8
1958	229.3	13.3	13.8	1.0	257.4	184.1	73.3	23.1	96.4
1959	259.2	14.9	12.6	1.2	287.8	195.5	92.3	-6.4	85.9
1960	233.0	11.2	13.2	1.2	258.7	187.7	70.9	.3	71.2
1961	244.6	14.1	14.8	1.2	274.7	208.9	65.8	18.0	83.9
1962	275.2	15.0	15.7	1.3	307.2	225.5	81.6	-7.6	74.0
1963	279.1	15.5	17.2	1.5	313.4	248.3	65.1	6.1	71.2
1964	237.2	18.7	17.6	1.9	275.4	220.8	54.5	-8.0	46.6
1965	262.2	22.3	18.3	2.3	305.1	256.4	48.7	7.7	56.4
1966	313.0	37.5	20.3	2.6	373.4	294.8	78.6	6.2	84.8
1967	336.2	33.3	21.5	3.1	394.1	331.4	62.6	8.5	71.1
1968	344.8	36.0	22.2	3.5	406.4	333.9	72.5	10.5	83.0
1969	397.4	41.6	28.7	3.9	471.6	386.8	84.8	6.4	91.2
1970	452.7	43.1	26.2	3.9	525.9	407.8	118.1	-3.0	115.1
1971	478.3	34.1	29.6	4.3	546.2	425.8	120.4	-3.2	117.2
1972	587.8	42.5	31.1	4.4	665.9	546.9	119.0	13.5	132.5
1973	843.6	29.4	35.5	5.2	913.8	709.1	204.7	-6.6	198.0
1974	588.0	13.3	47.5	5.3	654.2	549.1	105.1	34.3	139.4
1975 <sup>3/</sup>	726.2	11.3	49.6	6.1	793.3	596.2	197.1	-19.2	177.9
1976	698.3	15.5	53.0	6.3	773.1	643.9	129.2	-30.2	99.0
1977	791.8	15.1	62.7	7.0	876.6	771.9	104.8	19.0	123.7
1978	970.4	29.2	70.8	7.5	1077.8	873.4	204.4	-15.5	188.9
1979	1129.5	21.3	88.7	9.2	1248.7	1094.8	153.9	61.6	215.4
1980	1189.3	20.9	114.9	9.4	1334.5	1063.2	271.3	-87.5	183.8
1981	900.6	26.0	128.4	11.4	1066.4	1027.3	39.1	52.9	92.0
1982	949.5	31.9	143.5	12.1	1137.0	1041.5	95.5	-31.4	64.1

<sup>1/</sup> Details may not add to totals due to rounding.

<sup>2/</sup> Of farm operators.

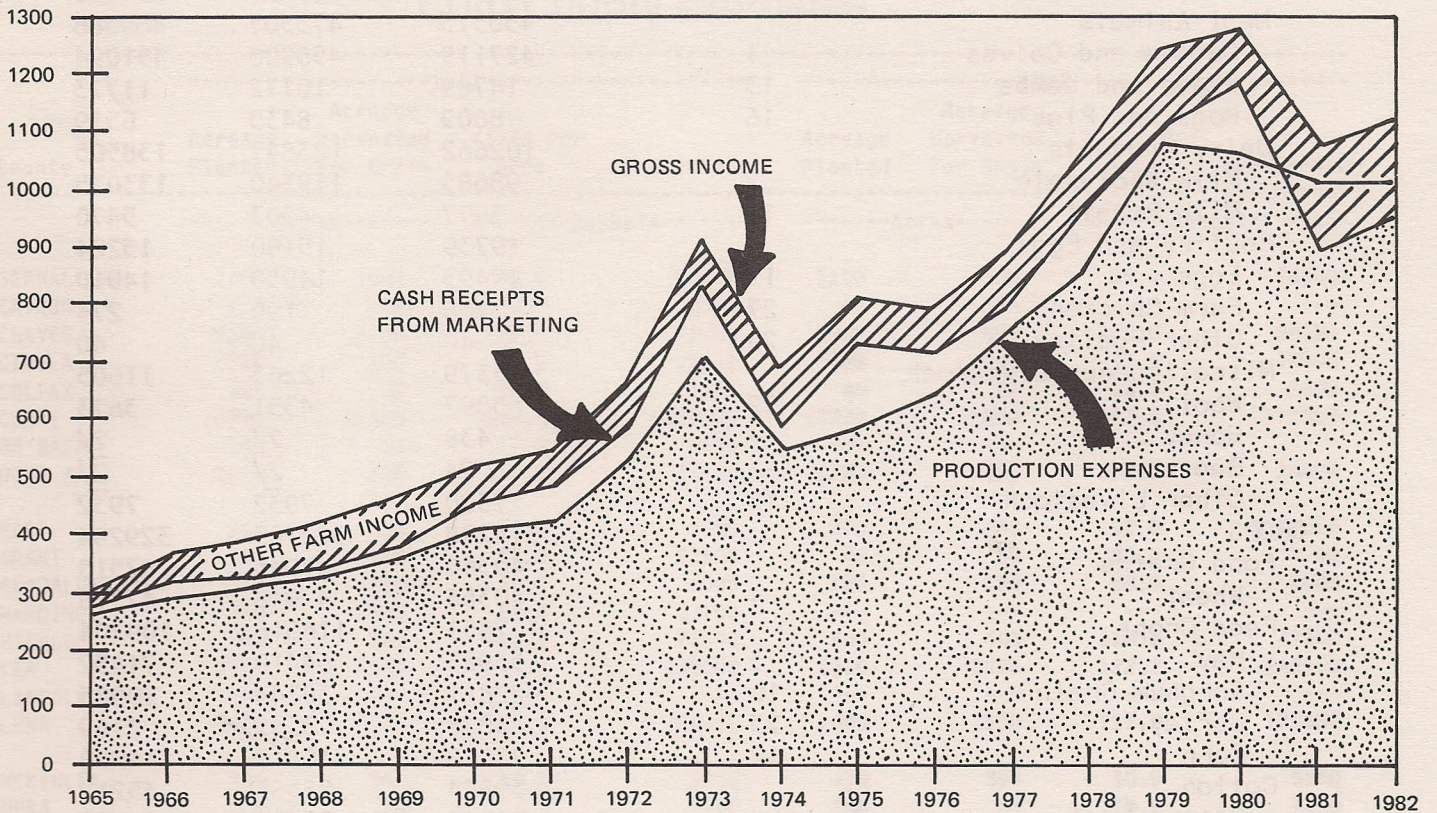
<sup>3/</sup> Beginning with 1975, based on the 1974 Census of Agriculture definition of a farm, which is a farm with sales of \$1,000 or more.

SOURCE: USDA. Economic Research Service Publication, ECIFS 2-4, January, 1984.



## New Mexico Farm and Ranch Income and Expenses, 1965-1982

MILLION DOLLARS



**INCOME** - Gross income increased 7 percent in 1982 to \$1.14 billion but remained well below the 1980 record level of \$1.33 billion. Cash receipts were up 5 percent, government payments jumped 23 percent, non-money income increased 12 percent, and other farm income rose 6 percent in 1982. Cash receipts from farm marketings represents 83.5 percent of gross farm income in 1982. Realized net income, the difference between gross income and production expenses, increased \$56.4 million from 1981 to \$95.5 million. Excluding 1981, this is the lowest level since 1969. Total net farm income, which adjusts for changes in inventory levels, is estimated at \$64.1 million, the lowest level since 1965.

**PRODUCTION EXPENSES** - Farms and ranches had \$1.04 billion in production expenses in 1982, an increase of 14.2 million dollars from the previous year. It was the second consecutive year that production expenses exceeded cash receipts from marketings.

## Cash Receipts by Commodities and Groups

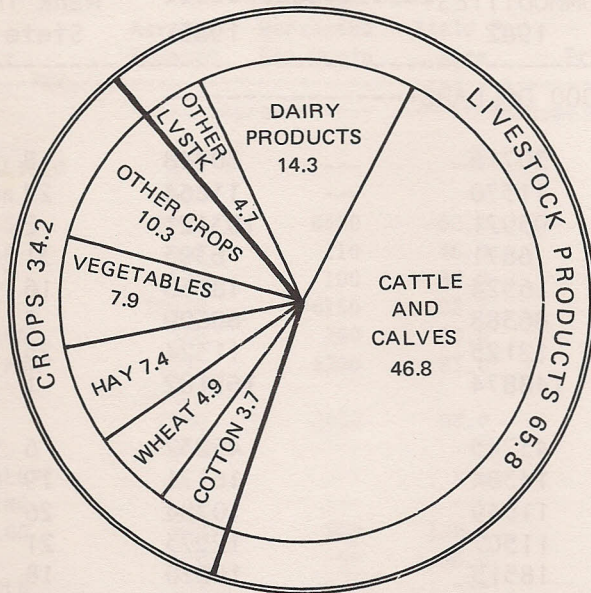
Commodity	Rank in		1981	1982	1983 1/
	New Mexico for 1983				
-----1000 Dollars-----					
<b>ALL COMMODITIES</b>			900571	949502	<b>964014</b>
<b>LIVESTOCK PRODUCTS</b>			586293	626797	<b>634720</b>
Meat Animals			450513	475507	<b>469386</b>
Cattle and Calves	1		427119	456900	<b>451094</b>
Sheep and Lambs	13		14785	10172	<b>11773</b>
Hogs and Pigs	16		8609	8435	<b>6519</b>
Dairy Products			102662	123847	<b>138505</b>
Milk Wholesale	2		98685	119340	<b>133035</b>
Milk Retail	19		3977	4507	<b>5470</b>
Poultry and Eggs			19739	15180	<b>15224</b>
Eggs	11		19493	14950	<b>14910</b>
Farm Chickens	27		206	190	<b>274</b>
Other Poultry	29		40	40	<b>40</b>
Miscellaneous Livestock			13379	12263	<b>11605</b>
Wool	22		5597	4331	<b>3673</b>
Honey	--		438	2/	<b>2/</b>
Beeswax	--		24	2/	<b>2/</b>
Other Livestock	15		7320	7932	<b>7932</b>
<b>CROPS</b>			314278	322705	<b>329294</b>
Food Grains			40366	47946	<b>47518</b>
Wheat	4		40366	47946	<b>47518</b>
Feed Crops			102851	116616	<b>109204</b>
Hay	3		55983	64410	<b>71452</b>
Sorghum Grain	10		22811	30744	<b>20985</b>
Barley	25		3038	3245	<b>2169</b>
Corn	12		21019	18217	<b>14598</b>
Cotton			39864	28565	<b>35212</b>
Cotton Lint	6		34905	26672	<b>30173</b>
Cottonseed	20		4959	1893	<b>5039</b>
Oil Crops			6442	6030	<b>5852</b>
Peanuts	18		6442	6030	<b>5852</b>
Vegetables			68566	66342	<b>76182</b>
Onions	14		20120	14278	<b>11107</b>
Lettuce	8		7695	13774	<b>23114</b>
Potatoes	17		5727	6248	<b>6473</b>
Chile	5		32830	29858	<b>33275</b>
Miscellaneous Vegetables	24		2194	2184	<b>2213</b>
Fruit and Nuts			19367	22253	<b>22056</b>
Pecans	9		17114	20655	<b>21100</b>
Apples	26		2003	1348	<b>706</b>
Other Fruit and Nuts	28		250	250	<b>250</b>
All Other Crops			36822	34953	<b>33270</b>
Greenhouse Nursery	7		25000	26000	<b>26000</b>
Forest Products	23		2000	2500	<b>2500</b>
Sugar Beets	--		1402	433	<b>0</b>
Other Field Crops	21		8420	6020	<b>4770</b>

1/ Preliminary. 2/ Estimate included in Other Livestock

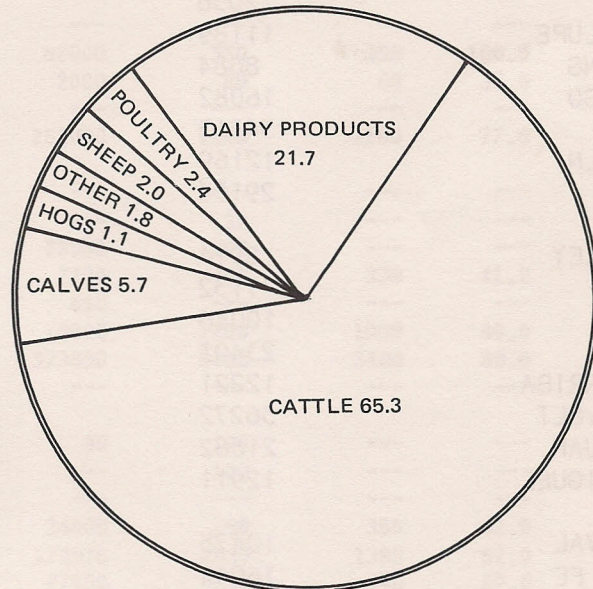
SOURCE: USDA-ERS, Economic Indicators of the Farm Sector.

# New Mexico Cash Receipts, 1983

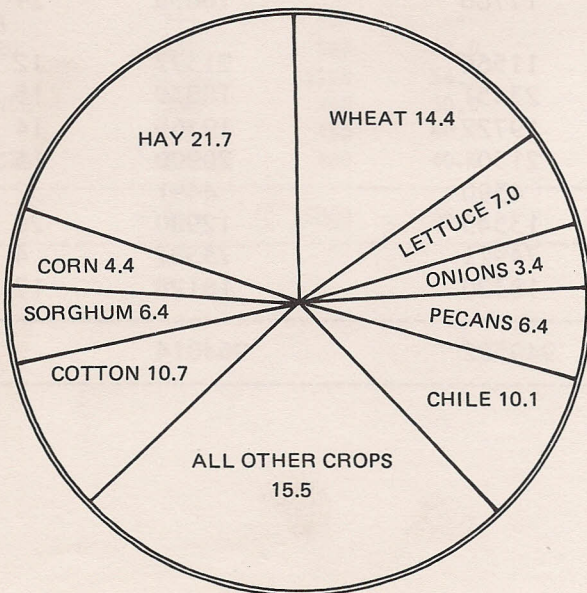
ALL COMMODITIES



LIVESTOCK



CROPS



## Cash Receipts: All Farm Commodities

COUNTY	ALL FARM COMMODITIES			1983 Rank in State
	1981	1982	1983	
-----1,000 DOLLARS-----				
BERNALILLO	30161	30718	<b>30748</b>	8
CATRON	9853	11570	<b>11864</b>	22
CHAVES	103939	95921	<b>103121</b>	2
CIBOLA	5884	6871	<b>6393</b>	31
COLFAX	13683	16524	<b>18168</b>	16
CURRY	93579	86388	<b>88609</b>	3
DE BACA	10507	12125	<b>11324</b>	25
DONA ANA	138253	148874	<b>165182</b>	1
EDDY	41043	43745	<b>46232</b>	6
GRANT	12036	14384	<b>16171</b>	19
GUADALUPE	11189	11549	<b>10784</b>	26
HARDING	8684	11507	<b>12573</b>	21
HIDALGO	16082	18515	<b>16820</b>	18
LEA	34313	31926	<b>27810</b>	10
LINCOLN	12169	12481	<b>11414</b>	24
LUNA	29154	30324	<b>33029</b>	7
MCKINLEY	8974	9291	<b>10053</b>	29
MORA	7132	8808	<b>7578</b>	30
OTERO	10046	11316	<b>10377</b>	28
QUAY	23403	26439	<b>28945</b>	9
RIO ARRIBA	12221	11581	<b>11723</b>	23
ROOSEVELT	56272	66059	<b>58632</b>	5
SAN JUAN	21882	27404	<b>26344</b>	11
SAN MIGUEL	12911	17766	<b>10653</b>	27
SANDOVAL	10475	11566	<b>21377</b>	12
SANTA FE	16944	23451	<b>18839</b>	15
SIERRA	19884	19722	<b>19365</b>	14
SOCORRO	19865	21501	<b>20900</b>	13
TAOS	4194	4390	<b>4491</b>	32
TORRANCE	13283	13545	<b>12980</b>	20
UNION	75256	74921	<b>73387</b>	4
VALENCIA	17300	18320	<b>18128</b>	17
STATE	900571	949502	<b>964014</b>	

## Cash Receipts: All Livestock, All Crops

COUNTY	-----All Livestock-----			-----All Crops-----		
	1981	1982	1983	1981	1982	1983
-----1000 Dollars-----						
BERNALILLO	22462	22707	<b>23010</b>	7699	8011	<b>7738</b>
CATRON	9545	11187	<b>11494</b>	308	383	<b>370</b>
CHAVES	79416	69321	<b>74656</b>	24523	26600	<b>28465</b>
CIBOLA	5191	6289	<b>5756</b>	693	582	<b>637</b>
COLFAX	12349	14829	<b>16056</b>	1334	1695	<b>2112</b>
CURRY	53202	43264	<b>51678</b>	40377	43124	<b>36931</b>
DE BACA	9021	10127	<b>9642</b>	1486	1998	<b>1682</b>
DONA ANA	53624	62324	<b>69336</b>	84629	86550	<b>95846</b>
EDDY	24989	27512	<b>25227</b>	16054	16233	<b>21005</b>
GRANT	11238	13589	<b>15387</b>	798	795	<b>784</b>
GUADALUPE	10766	11112	<b>10325</b>	423	437	<b>459</b>
HARDING	8183	10608	<b>11780</b>	501	899	<b>793</b>
HIDALGO	10351	14602	<b>12864</b>	5731	3913	<b>3956</b>
LEA	24773	25004	<b>20913</b>	9540	6922	<b>6897</b>
LINCOLN	11572	12070	<b>10937</b>	597	411	<b>477</b>
LUNA	11788	15771	<b>17735</b>	17366	14553	<b>15294</b>
MCKINLEY	8689	8864	<b>9511</b>	285	427	<b>542</b>
MORA	6521	8045	<b>6790</b>	611	763	<b>788</b>
OTERO	7825	9187	<b>8191</b>	2221	2129	<b>2186</b>
QUAY	14413	18366	<b>15758</b>	8990	8073	<b>13187</b>
RIO ARRIBA	9846	9242	<b>9266</b>	2375	2339	<b>2457</b>
ROOSEVELT	24869	29310	<b>31465</b>	31403	36749	<b>27167</b>
SAN JUAN	9608	12252	<b>9104</b>	12274	15152	<b>17240</b>
SAN MIGUEL	11391	16481	<b>9313</b>	1520	1285	<b>1340</b>
SANDOVAL	6843	7960	<b>17619</b>	3632	3606	<b>3758</b>
SANTA FE	12821	19494	<b>14576</b>	4123	3957	<b>4263</b>
SIERRA	11994	12602	<b>12241</b>	7890	7120	<b>7124</b>
SOCORRO	15288	16879	<b>16553</b>	4577	4622	<b>4347</b>
TAOS	2723	2795	<b>2756</b>	1471	1595	<b>1735</b>
TORRANCE	6920	7247	<b>7112</b>	6363	6298	<b>5868</b>
UNION	65602	64495	<b>64168</b>	9654	10426	<b>9219</b>
VALENCIA	12470	13262	<b>13501</b>	4830	5058	<b>4627</b>
STATE	586293	626797	<b>634720</b>	314278	322705	<b>329294</b>

## Cash Receipts: Cattle and Calves, Milk

COUNTY	---Cattle and Calves---			-----Milk-----		
	1981	1982	1983	1981	1982	1983
-----1000 Dollars-----						
BERNALILLO	7316	6545	<b>6782</b>	9146	10496	<b>10723</b>
CATRON	9267	10902	<b>11306</b>	187	210	<b>112</b>
CHAVES	59492	44187	<b>45504</b>	13439	20361	<b>24127</b>
CIBOLA	3943	5322	<b>4774</b>	187	105	<b>112</b>
COLFAX	11830	14449	<b>15578</b>	187	105	<b>223</b>
CURRY	49162	38626	<b>47426</b>	2800	3568	<b>3574</b>
DE BACA	7887	9126	<b>8543</b>	374	420	<b>558</b>
DONA ANA	8698	10944	<b>11558</b>	29865	40513	<b>46913</b>
EDDY	22167	25009	<b>22705</b>	1120	1259	<b>1340</b>
GRANT	10844	13180	<b>15075</b>	187	210	<b>112</b>
GUADALUPE	9070	9887	<b>9045</b>	187	105	<b>112</b>
HARDING	7887	10394	<b>11558</b>	187	105	<b>112</b>
HIDALGO	8899	12868	<b>11306</b>	187	210	<b>112</b>
LEA	19892	19582	<b>13819</b>	4106	4828	<b>6478</b>
LINCOLN	8084	9380	<b>8291</b>	374	420	<b>223</b>
LUNA	9898	13210	<b>15201</b>	373	839	<b>782</b>
MCKINLEY	4929	6083	<b>6533</b>	187	105	<b>112</b>
MORA	5915	7605	<b>6533</b>	373	210	<b>112</b>
OTERO	5915	7858	<b>7035</b>	560	105	<b>112</b>
QUAY	13117	17482	<b>14844</b>	746	420	<b>447</b>
RIO ARRIBA	8873	8366	<b>8543</b>	187	210	<b>112</b>
ROOSEVELT	10844	13688	<b>13315</b>	12693	14274	<b>16755</b>
SAN JUAN	4929	7906	<b>4523</b>	2427	2519	<b>2681</b>
SAN MIGUEL	10647	15970	<b>8744</b>	373	210	<b>223</b>
SANDOVAL	3352	4308	<b>13819</b>	2986	3149	<b>3351</b>
SANTA FE	11849	18523	<b>13710</b>	373	420	<b>335</b>
SIERRA	7493	8366	<b>8040</b>	4106	3988	<b>4021</b>
SOCORRO	11042	12420	<b>12060</b>	3920	4198	<b>4244</b>
TAOS	1972	2283	<b>2261</b>	373	210	<b>223</b>
TORRANCE	5718	6337	<b>6372</b>	373	210	<b>112</b>
UNION	63625	62797	<b>62773</b>	1120	839	<b>893</b>
VALENCIA	2563	3297	<b>3518</b>	8959	9026	<b>9159</b>
STATE	427119	456900	<b>451094</b>	102662	123847	<b>138505</b>

## Cash Receipts: Sheep, Poultry

COUNTY	Sheep			Poultry		
	1981	1982	1983	1981	1982	1983
-----1000 Dollars-----						
BERNALILLO	100	71	76	5029	4705	4585
CATRON	16	12	13	11	5	5
CHAVES	5155	3668	4178	86	78	49
CIBOLA	629	448	456	16	10	10
COLFAX	100	71	51	27	24	25
CURRY	265	187	152	32	29	29
DE BACA	629	448	430	10	10	10
DONA ANA	49	35	35	13520	9316	9367
EDDY	1094	778	810	141	176	128
GRANT	3	2	3	21	20	20
GUADALUPE	1326	943	1013	11	15	15
HARDING	26	19	20	16	15	15
HIDALGO	23	17	13	10	10	10
LEA	398	283	253	36	20	74
LINCOLN	2917	2075	2228	3	5	5
LUNA	3	2	3	11	10	10
MCKINLEY	3215	2287	2456	16	20	20
MORA	76	54	58	16	20	20
OTERO	563	401	430	29	24	24
QUAY	139	99	106	22	20	20
RIO ARRIBA	431	307	253	28	29	29
ROOSEVELT	176	125	152	324	324	444
SAN JUAN	1656	1179	1266	43	39	49
SAN MIGUEL	33	24	25	86	78	79
SANDOVAL	133	95	127	11	10	15
SANTA FE	100	71	51	21	20	20
SIERRA	7	5	5	12	10	10
SOCORRO	179	127	137	22	20	20
TAOS	265	189	165	31	29	24
TORRANCE	431	307	304	22	20	20
UNION	46	33	25	22	20	34
VALENCIA	199	141	152	54	49	39
STATE	20382	14503	15446	19739	15180	15224

## Cash Receipts: Hogs, Other Livestock

COUNTY	Hogs			Other Livestock		
	1981	1982	1983	1981	1982	1983
-----1000 Dollars-----						
BERNALILLO	97	111	65	774	779	779
CATRON	28	22	22	36	36	36
CHAVES	764	533	304	480	494	494
CIBOLA	42	22	22	374	382	382
COLFAX	69	44	43	136	136	136
CURRY	555	466	109	388	388	388
DE BACA	42	44	22	79	79	79
DONA ANA	472	466	413	1020	1050	1050
EDDY	278	89	43	189	201	201
GRANT	28	22	22	155	155	155
GUADALUPE	56	44	22	116	118	118
HARDING	14	22	22	53	53	53
HIDALGO	1178	1443	1369	54	54	54
LEA	139	89	87	202	202	202
LINCOLN	28	22	22	166	168	168
LUNA	1458	1665	1694	45	45	45
MCKINLEY	28	22	43	314	347	347
MORA	97	111	22	44	45	45
OTERO	583	622	413	175	177	177
QUAY	222	178	174	167	167	167
RIO ARRIBA	42	44	43	285	286	286
ROOSEVELT	555	622	522	277	277	277
SAN JUAN	56	89	65	497	520	520
SAN MIGUEL	97	44	87	155	155	155
SANDOVAL	97	134	43	264	264	264
SANTA FE	42	22	22	436	438	438
SIERRA	264	111	43	112	122	122
SOCORRO	56	44	22	69	70	70
TAOS	42	44	43	40	40	40
TORRANCE	181	178	109	195	195	195
UNION	694	711	348	95	95	95
VALENCIA	305	355	239	390	394	394
STATE	8609	8435	6519	7782	7932	7932



## Cash Receipts: Wheat, Hay

COUNTY	Wheat			Hay		
	1981	1982	1983	1981	1982	1983
-----1000 Dollars-----						
BERNALILLO	14	8	13	1006	1120	847
CATRON	---	---	---	48	57	56
CHAVES	951	1528	1032	12485	15379	16733
CIBOLA	---	17	2	208	162	194
COLFAX	108	210	139	1022	1214	1719
CURRY	15002	20014	19051	1507	1245	1642
DE BACA	234	278	258	1050	1441	1290
DONA ANA	2196	1419	653	3949	4864	5370
EDDY	716	288	227	8380	10027	11791
GRANT	---	---	---	152	158	143
GUADALUPE	8	8	56	253	265	245
HARDING	115	138	411	110	150	153
HIDALGO	500	309	182	447	346	250
LEA	1684	1156	1260	2208	2282	2208
LINCOLN	---	---	---	60	103	194
LUNA	1151	630	286	387	695	760
MCKINLEY	2	---	---	43	91	117
MORA	---	---	---	489	635	663
OTERO	29	26	15	980	951	1051
QUAY	3820	2414	8398	1238	1515	2015
RIO ARRIBA	121	161	108	872	1025	1275
ROOSEVELT	10347	15433	10803	1268	1254	1530
SAN JUAN	25	20	949	4757	5567	6579
SAN MIGUEL	4	---	---	815	738	755
SANDOVAL	3	---	5	573	581	719
SANTA FE	128	152	118	1317	1051	1209
SIERRA	119	125	122	782	846	1035
SOCORRO	48	8	---	2346	2518	2769
TAOS	15	34	43	757	982	1275
TORRANCE	324	246	389	1411	1706	1601
UNION	2673	3286	2967	1715	1787	1770
VALENCIA	29	38	31	3348	3655	3494
STATE	40366	47946	47518	55983	64410	71452

## Cash Receipts: Sorghum, Corn

COUNTY	-----Sorghum-----			-----Corn-----		
	1981	1982	1983	1981	1982	1983
	-----1000 Dollars-----					
BERNAL ILLO	16	18	8	79	203	53
CATRON	---	4	---	12	10	---
CHAVES	321	850	474	13	271	104
CIBOLA	---	---	---	14	35	22
COLFAX	3	1	3	7	6	5
CURRY	8085	11165	8327	8228	5344	3987
DE BACA	62	168	11	---	8	---
DONA ANA	212	231	312	111	161	50
EDDY	40	155	328	63	10	38
GRANT	---	11	129	31	50	6
GUADALUPE	10	7	9	---	14	12
HARDING	211	476	129	---	29	---
HIDALGO	744	464	635	565	165	98
LEA	383	851	401	956	516	507
LINCOLN	---	---	---	---	---	---
LUNA	1374	1367	1126	1120	466	367
MCKINLEY	---	---	---	16	5	11
MORA	---	---	---	2	4	2
OTERO	6	9	3	10	10	2
QUAY	2991	3369	2288	111	72	31
RIO ARRIBA	---	---	---	23	6	4
ROOSEVELT	6278	9088	4422	3168	2242	1439
SAN JUAN	---	---	---	1831	4147	4638
SAN MIGUEL	---	---	---	6	10	5
SANDOVAL	---	---	---	210	74	67
SANTA FE	---	---	---	238	161	358
SIERRA	24	16	20	154	67	52
SOCORRO	22	26	45	671	715	461
TAOS	---	---	---	---	5	1
TORRANCE	---	8	12	780	818	539
UNION	2014	2427	2262	2447	2391	1705
VALENCIA	15	33	41	153	202	34
STATE	22811	30744	20985	21019	18217	14598

## Cash Receipts: Barley, Cotton

COUNTY	Barley			Cotton		
	1981	1982	1983	1981	1982	1983
-----1000 Dollars-----						
BERNALILLO	4	---	8	---	---	---
CATRON	---	---	---	---	---	---
CHAVES	352	548	322	6281	4398	6074
CIBOLA	3	6	---	---	---	---
COLFAX	---	4	1	---	---	---
CURRY	732	757	393	1811	490	376
DE BACA	30	24	13	---	---	---
DONA ANA	183	143	107	11031	9005	11423
EDDY	175	282	446	4329	3035	4516
GRANT	---	---	10	---	---	---
GUADALUPE	---	---	---	---	---	---
HARDING	---	---	---	---	---	---
HIDALGO	17	109	44	2759	2292	2360
LEA	24	3	3	3126	1094	1580
LINCOLN	---	---	---	---	---	---
LUNA	394	335	107	7670	6366	6673
MCKINLEY	---	---	---	---	---	---
MORA	---	---	---	---	---	---
OTERO	39	37	---	198	84	156
QUAY	46	10	17	325	211	133
RIO ARRIBA	2	1	---	---	---	---
ROOSEVELT	74	93	50	2235	1519	1835
SAN JUAN	556	497	381	---	---	---
SAN MIGUEL	5	---	---	---	---	---
SANDOVAL	---	---	---	---	---	---
SANTA FE	5	---	---	---	---	---
SIERRA	11	---	---	99	71	86
SOCORRO	28	46	27	---	---	---
TAOS	307	230	90	---	---	---
TORRANCE	12	63	34	---	---	---
UNION	36	36	92	---	---	---
VALENCIA	3	21	24	---	---	---
STATE	3038	3245	2169	39864	28565	35212

## Cash Receipts: Vegetables, Chile

COUNTY	-----Vegetables-----			-----Chile-----		
	1981	1982	1983	1981	1982	1983
	-----1000 Dollars-----					
BERNALILLO	90	101	109	1225	1125	1257
CATRON	4	5	4	---	---	---
CHAVES	352	283	188	1555	1432	1354
CIBOLA	150	6	66	---	---	---
COLFAX	7	8	9	---	---	---
CURRY	3086	2971	2524	---	---	---
DE BACA	4	5	4	---	---	---
DONA ANA	24672	26162	32787	17385	15757	15867
EDDY	86	54	83	1720	1637	3096
GRANT	5	6	7	10	---	---
GUADALUPE	4	4	6	110	101	96
HARDING	3	4	4	---	---	---
HIDALGO	11	25	46	325	---	212
LEA	344	250	150	---	---	---
LINCOLN	2	2	2	---	---	---
LUNA	1837	984	1100	1970	2665	4063
MCKINLEY	14	5	5	---	---	---
MORA	18	9	9	---	---	---
OTERO	20	9	9	20	20	19
QUAY	126	170	40	65	41	10
RIO ARRIBA	182	144	147	560	409	483
ROOSEVELT	1245	1365	1482	110	61	96
SAN JUAN	564	1385	2086	45	41	39
SAN MIGUEL	9	15	18	220	20	48
SANDOVAL	91	100	91	640	819	967
SANTA FE	70	163	155	225	205	193
SIERRA	821	793	609	5350	4502	4605
SOCORRO	591	450	200	650	614	580
TAOS	13	20	30	---	---	---
TORRANCE	1227	898	812	---	---	---
UNION	18	18	64	---	---	---
VALENCIA	70	70	111	645	409	290
STATE	35736	36484	42957	32830	29858	33275

## Cash Receipts: Fruits and Nuts, Other Crops

COUNTY	-----Fruits & Nuts-----			-----Other Crops-----		
	1981	1982	1983	1981	1982	1983
-----1000 Dollars-----						
BERNALILLO	91	36	31	5174	5400	5412
CATRON	5	4	4	239	303	306
CHAVES	1550	1263	1542	663	648	642
CIBOLA	10	3	3	308	353	350
COLFAX	5	5	5	182	247	231
CURRY	8	10	10	1918	1128	621
DE BACA	38	25	15	68	49	91
DONA ANA	14595	18084	18619	10295	10724	10708
EDDY	221	411	83	324	334	397
GRANT	277	179	92	323	391	397
GUADALUPE	8	5	5	30	33	30
HARDING	5	3	3	57	99	93
HIDALGO	6	5	5	357	198	124
LEA	14	20	74	801	750	714
LINCOLN	300	34	12	235	272	269
LUNA	482	578	546	981	467	266
MCKINLEY	4	30	30	206	296	379
MORA	3	3	3	99	112	111
OTERO	250	271	219	669	712	712
QUAY	7	27	12	261	244	243
RIO ARRIBA	388	360	200	227	233	240
ROOSEVELT	9	30	30	6669	5664	5480
SAN JUAN	262	101	65	4234	3394	2503
SAN MIGUEL	41	3	3	420	499	511
SANDOVAL	427	247	118	1688	1785	1791
SANTA FE	85	67	35	2055	2158	2195
SIERRA	204	334	229	326	366	366
SOCORRO	12	13	6	209	232	259
TAOS	15	5	5	364	319	291
TORRANCE	4	3	3	2605	2556	2478
UNION	5	7	7	746	474	352
VALENCIA	36	87	42	531	543	560
STATE	19367	22253	22056	43264	40983	39122

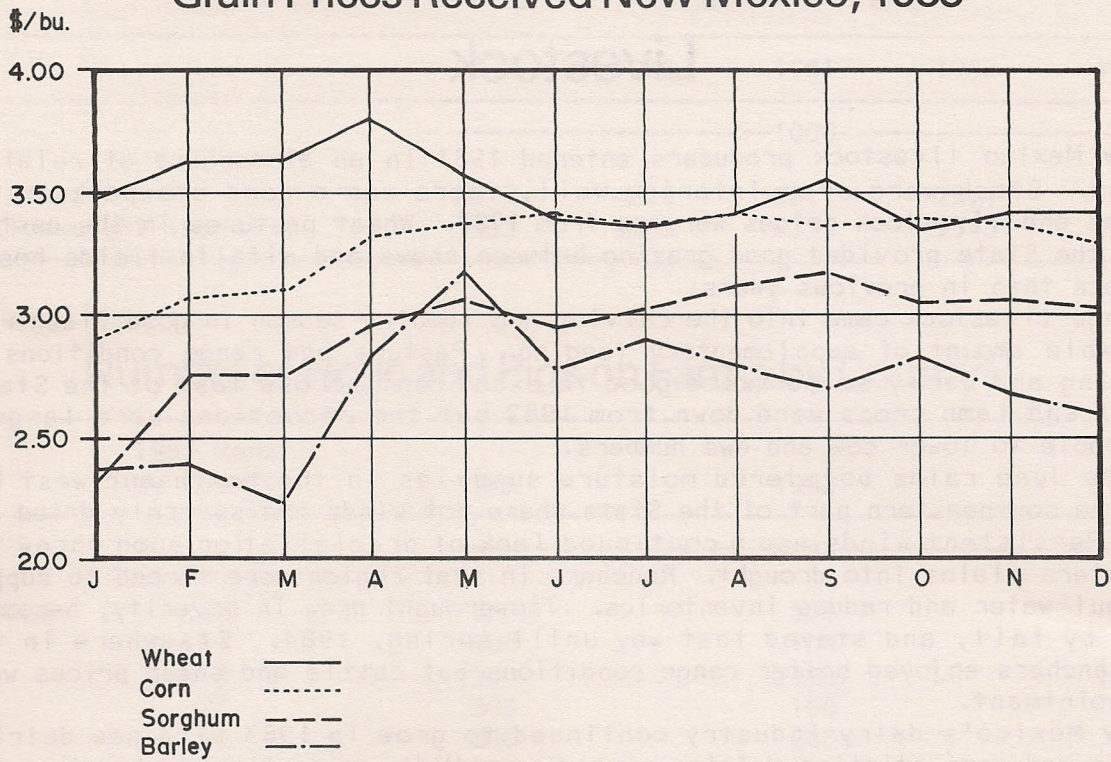
## Prices Received for Field Crops

YEAR AND MONTH		GRAIN SORGHUM \$/cwt.	ALL WHEAT \$/bu.	CORN \$/bu.	BARLEY \$/bu.	ALL HAY \$/ton	ALFALFA \$/ton	OTHER HAY \$/ton
1983	JANUARY	4.15	3.48	2.92	2.35	79.00	81.00	65.00
	FEBRUARY	4.91	3.61	3.05	2.38	84.00	86.00	70.00
	MARCH	4.91	3.62	3.09	2.21	88.00	90.00	65.00
	APRIL	5.26	3.81	3.31	2.85	89.00	91.00	70.00
	MAY	5.45	3.56	3.35	3.17	90.00	92.00	70.00
	JUNE	5.27	3.37	3.40	2.77	85.00	87.00	65.00
	JULY	5.38	3.36	3.38	2.89	87.00	89.00	65.00
	AUGUST	5.56	3.42	3.41	2.78	85.00	87.00	65.00
	SEPTEMBER	5.63	3.56	3.36	2.69	85.00	87.00	65.00
	OCTOBER	5.44	3.35	3.39	2.83	89.00	90.00	75.00
	NOVEMBER	5.47	3.43	3.37	2.66	90.00	92.00	75.00
	DECEMBER	5.39	3.43	3.28	2.60	98.00	100.00	80.00
<b>1983</b>		<b>5.40</b>	<b>3.65</b>	<b>3.45</b>	<b>2.80</b>	<b>89.00</b>	---	---
1982		4.85	3.65	2.85	2.40	74.50	---	---
1981		4.41	3.64	2.84	2.81	84.00	---	---
1980		6.11	3.76	3.60	2.55	86.50	---	---
1979		4.45	3.91	2.81	2.40	69.00	---	---

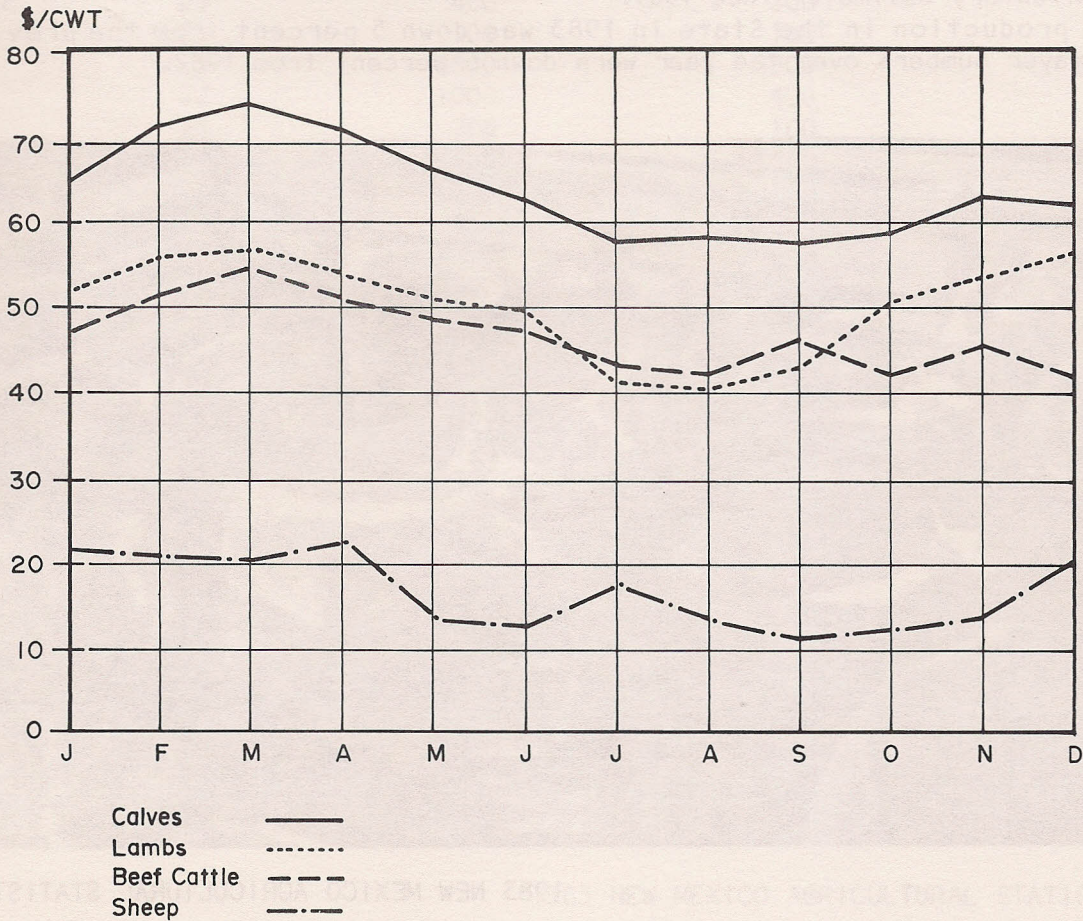
## Prices Received for Livestock

YEAR AND MONTH		BEEF CATTLE \$/cwt.	CALVES \$/cwt.	COWS \$/cwt.	STEERS & HEIFERS \$/cwt.	LAMBS \$/cwt.	SHEEP \$/cwt.
1983	JANUARY	48.50	65.30	36.00	59.10	52.00	21.00
	FEBRUARY	51.90	71.30	41.90	61.10	56.80	20.20
	MARCH	55.10	73.30	42.80	64.90	57.10	20.00
	APRIL	50.40	71.50	42.30	59.80	54.70	22.90
	MAY	49.10	66.90	41.00	58.80	51.70	14.60
	JUNE	47.50	63.60	40.00	56.10	49.30	13.70
	JULY	43.10	57.50	38.70	52.20	42.50	17.90
	AUGUST	42.40	58.60	37.10	52.50	40.60	14.60
	SEPTEMBER	45.80	58.30	35.90	54.30	43.10	12.70
	OCTOBER	41.90	59.20	33.90	53.10	50.60	13.20
	NOVEMBER	45.90	63.90	36.80	56.20	54.60	14.70
	DECEMBER	42.50	63.70	35.60	54.60	56.10	20.60
<b>1983</b>		<b>46.50</b>	<b>65.20</b>	<b>37.60</b>	<b>57.00</b>	<b>50.10</b>	<b>15.00</b>
1982		46.80	62.60	36.60	57.50	48.60	18.20
1981		51.00	67.10	39.80	60.80	51.00	22.70
1980		64.30	77.60	44.60	68.00	61.90	22.60
1979		69.20	87.60	48.20	70.60	71.90	27.80

### Grain Prices Received New Mexico, 1983



### Livestock Prices Received New Mexico, 1983



## Livestock

New Mexico livestock producers entered 1983 in an atmosphere of relative optimism. Stock were overwintering well, there was a good snowpack in the mountains and livestock prices were up from 1982. Wheat pastures in the eastern part of the State provided good grazing between snows and alfalfa fields hosted more stock than in previous years.

Range livestock came into the calving and lambing season in good flesh with a tolerable amount of supplementary feeding. Pasture and range conditions in the spring and early summer were good to excellent across most of the State. The calf and lamb crops were down from 1982 but the reductions were largely attributable to lower cow and ewe numbers.

Late June rains bolstered moisture supplies in the north and west but missed the southeastern part of the State where hot winds had severely dried the range. Persistent winds and a continued lack of precipitation soon threw the southeastern plains into drought. Ranchers in that region were forced to supply feed, haul water and reduce inventories. The drought grew in severity, becoming extreme by fall, and stayed that way until spring, 1984. Elsewhere in the State, ranchers enjoyed better range conditions but cattle and sheep prices were a disappointment.

New Mexico's dairy industry continued to grow in 1983 with new dairies coming in and some existing dairies expanding. Milk production during the year was 16 percent above the 1982 total and more than double that recorded in 1978.

The New Mexico swine industry continued to decline in 1983, perpetuating a trend that began in 1980. Estimated as of December 1, 1983, the total hog and pig inventory was less than half that estimated in 1980 and the lowest New Mexico inventory estimate since 1907.

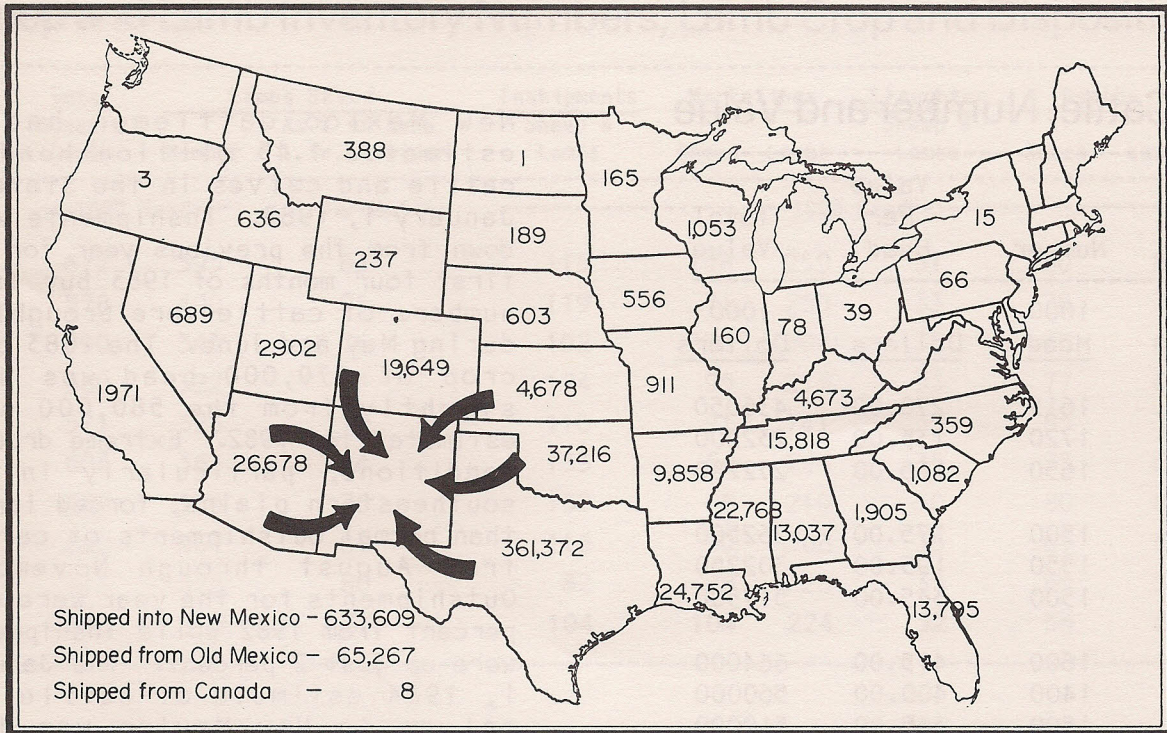
Egg production in the State in 1983 was down 5 percent from the previous year as layer numbers over the year were down 6 percent from 1982.





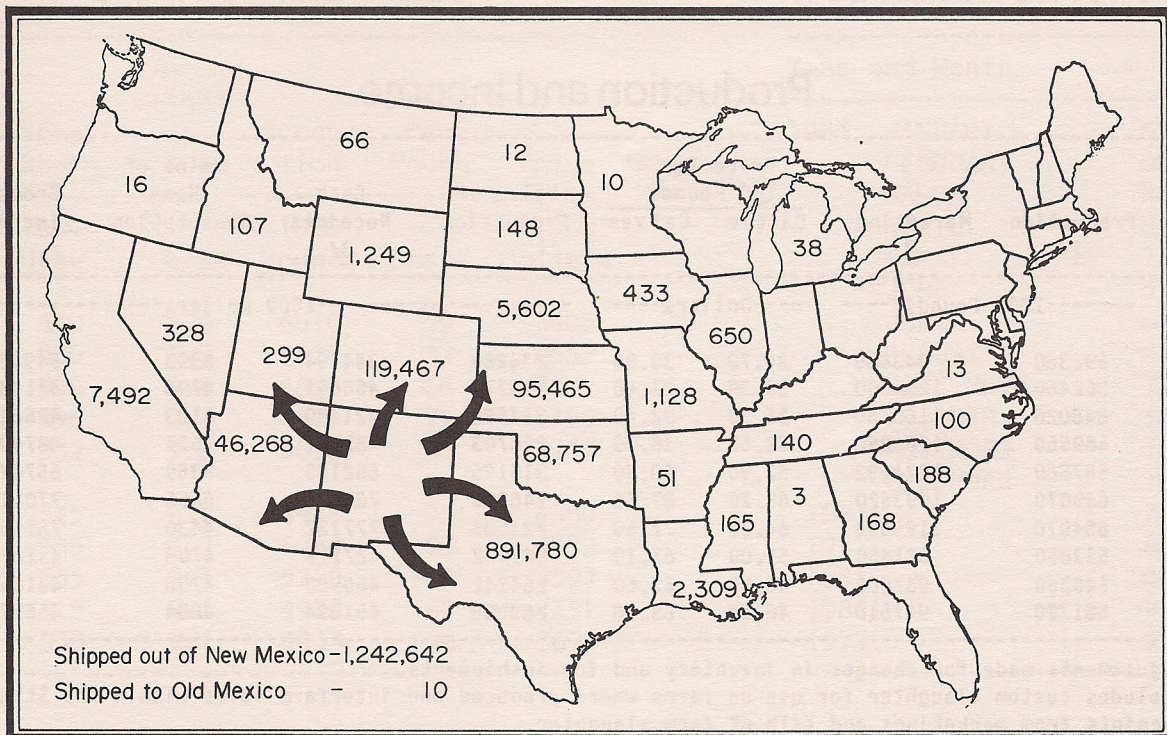
# Cattle Number Shipped into New Mexico

BY STATE OF ORIGIN, 1983<sup>1</sup>



# Cattle Number Shipped Out of New Mexico

BY STATE OF DESTINATION, 1983<sup>1</sup>



<sup>1</sup>Prior to January 1983, shipments to and from the Clovis Livestock Auction were excluded from the above totals. In shipments for 1982, including those to the Clovis Livestock Auction, were 619,440 head. Comparable out shipments for 1982 totaled 1,136,101 head.

Source: New Mexico Livestock Board Permit Records

# Cattle and Calves

## All Cattle, Number and Value

Year	Number	Value	Total
		Per Head	Value
	1000 Head	Dollars	1000 Dollars
1974	1615	270.00	436050
1975	1720	135.00	232200
1976	1650	165.00	272250
1977	1500	175.00	262500
1978	1550	195.00	302250
1979	1500	345.00	517500
1980	1600	415.00	664000
1981	1400	400.00	560000
1982	1500	340.00	510000
1983	1450	340.00	493000
<b>1984</b>	<b>1390</b>	<b>360.00</b>	<b>500400</b>

1/ As of January 1.

New Mexico cattlemen had an estimated 1.45 million head of cattle and calves in the State on January 1, 1983. Inshipments were down from the previous year for the first four months of 1983 but large numbers of cattle were brought in during May and June. The 1983 calf crop of 570,000 head was down slightly from the 580,000 head estimated for 1982. Extreme drought conditions, particularly in the southeastern plains, forced larger than normal outshipments of cattle from August through November. Outshipments for the year were up 9 percent from 1982 while inshipments were up just 2 percent. The January 1, 1984 estimate of cattle and calves in New Mexico was 1.39 million head, 4 percent below January 1, 1983 and 7 percent below January 1, 1982. This was the lowest January 1 inventory estimate since 1966.

## Production and Income

Year	Production 1/	Marketings 2/	Price Per 100 Pounds		Value of Production	Cash Receipts 3/	Value of Home Consumption	Gross Income
			Cattle	Calves				
	-----1000 Pounds-----		---Dollars---		-----1000 Dollars-----			
1974	592380	943880	36.70	30.90	214289	344194	5393	349587
1975	562460	1200900	39.30	27.40	213274	466691	4796	471487
1976	648020	1165760	36.30	32.40	234598	421480	4133	425613
1977	589660	1256860	38.50	36.70	225703	482971	4527	487498
1978	587560	1224692	52.90	60.80	315185	652105	5369	657474
1979	639070	1093820	69.20	87.60	446310	763463	6655	770118
1980	654070	1199050	64.30	77.60	423506	777122	4430	781552
1981	533850	821450	51.00	67.10	281972	427119	4708	431827
1982	545360	957060	46.80	62.60	264241	456900	4750	461650
<b>1983</b>	<b>561720</b>	<b>947510</b>	<b>46.50</b>	<b>65.20</b>	<b>269089</b>	<b>451094</b>	<b>4884</b>	<b>455978</b>

1/ Adjustments made for changes in inventory and for inshipments.

2/ Excludes custom slaughter for use on farms where produced and interfarm sales within the State.

3/ Receipts from marketings and sale of farm slaughter.

## Number of Cattle and Calves by Classes <sup>1/</sup>

Year	All Cattle and Calves	Cows and Heifers That Have Calved			Heifers 500 Lbs. and Over					Heifers, Steers, & Bulls Under 500 Lbs.	
		All Cow	Beef Cows	Milk Cows	Bulls 500 Lbs. & Over	Beef Replacement	Milk Replacement	Other	Total	Steers 500 Lbs. & Over	Bulls Under 500 Lbs.
		-----1000 Head-----									
1974	1615	700	670	30	38	102	10	105	217	240	420
1975	1720	745	714	31	46	126	9	84	219	251	459
1976	1650	675	644	31	40	106	9	88	203	223	509
1977	1500	675	642	33	45	99	6	84	189	165	426
1978	1550	651	617	34	43	87	12	105	204	172	480
1979	1500	635	597	38	40	75	8	78	161	184	480
1980	1600	665	626	39	46	114	8	105	227	224	438
1981	1400	600	551	49	42	95	17	77	189	202	367
1982	1500	620	565	55	42	96	21	93	210	237	391
1983	1450	650	591	59	45	100	23	80	203	202	350
<b>1984</b>	<b>1390</b>	<b>640</b>	<b>578</b>	<b>62</b>	<b>42</b>	<b>93</b>	<b>22</b>	<b>73</b>	<b>188</b>	<b>206</b>	<b>314</b>

<sup>1/</sup> As of January 1.

## Commercial Slaughter: Cattle

	1979	1980	1981	1982	1983
-----1000-----					
Number (Head)	506.8	429.1	165.3	153.4	<b>167.5</b>
Total Liveweight (Pounds)	499984	428095	161324	148697	<b>163115</b>

## Cattle Inventory Numbers, Calf Crop, and Disposition

Year	All Cattle and Calves <sup>1/</sup>	Calf Crop	Inshipments	Marketings <sup>2/</sup>		Farm Slaughter <sup>3/</sup>	Deaths	
				Cattle	Calves	Cattle & Calves	Cattle	Calves
-----1000 Head-----								
1974	1615	600	720	1028	97	10	30	50
1975	1720	590	938	1397	114	10	32	45
1976	1650	590	755	1309	111	10	25	40
1977	1500	565	1128	1424	131	8	40	40
1978	1550	560	1000	1382	136	7	45	40
1979	1500	580	900	1218	91	6	30	35
1980	1600	600	700	1263	117	5	30	35
1981	1400	600	600	913	127	5	25	30
1982	1500	580	660	1078	146	6	28	32
<b>1983</b>	<b>1450</b>	<b>570</b>	<b>640</b>	<b>1055</b>	<b>144</b>	<b>6</b>	<b>30</b>	<b>35</b>

<sup>1/</sup> Includes cattle on feed in feedlots.

<sup>2/</sup> Includes custom slaughter for use on farms where produced, but excludes inter-farm sales within the state.

<sup>3/</sup> Excludes custom slaughter for farmers at commercial establishments.

## Range and Pasture Conditions

Year	April	May	June	July	August	September	October	November
-----Percent-----								
1974	62	54	50	39	49	65	71	73
1975	70	77	75	73	80	74	81	76
1976	60	62	66	55	67	65	70	65
1977	55	71	77	66	69	81	77	73
1978	71	65	70	76	73	70	68	70
1979	72	79	87	91	86	88	84	79
1980	71	76	76	66	52	54	64	66
1981	57	60	61	59	75	93	95	96
1982	79	72	77	77	70	79	85	81
<b>1983</b>	<b>83</b>	<b>87</b>	<b>78</b>	<b>81</b>	<b>66</b>	<b>65</b>	<b>60</b>	<b>64</b>

<sup>1/</sup> Range and pasture condition is expressed as a percentage. 100 percent represents the normal growth and vitality one would expect if there had been no damage from unfavorable weather, insects, pests, etc.

## Number of Cattle on Farms, by County <sup>1/</sup>

County	All Cattle		Beef Cows		Milk Cows		Other Cattle <sup>2/</sup>	
	1983	1984	1983	1984	1983	1984	1983	1984
-----Head-----								
BERNALILLO	24000	<b>24000</b>	10000	<b>10000</b>	5000	<b>4800</b>	9000	<b>9200</b>
CATRON	43000	<b>45000</b>	20500	<b>20000</b>	100	<b>50</b>	22400	<b>24950</b>
CHAVES	123000	<b>115000</b>	51000	<b>46000</b>	9700	<b>10800</b>	62300	<b>58200</b>
CIBOLA	21000	<b>19000</b>	12000	<b>11000</b>	50	<b>50</b>	8950	<b>7950</b>
COLFAX	57000	<b>62000</b>	25000	<b>26000</b>	50	<b>100</b>	31950	<b>35900</b>
CURRY	89000	<b>90000</b>	11000	<b>9000</b>	1700	<b>1600</b>	76300	<b>79400</b>
DE BACA	36000	<b>34000</b>	16000	<b>14000</b>	200	<b>250</b>	19800	<b>19750</b>
DONA ANA	41000	<b>46000</b>	9500	<b>9500</b>	19300	<b>21000</b>	12200	<b>15500</b>
EDDY	65000	<b>55000</b>	22000	<b>27500</b>	600	<b>600</b>	42400	<b>26900</b>
GRANT	52000	<b>60000</b>	26500	<b>32000</b>	100	<b>50</b>	25400	<b>27950</b>
GUADALUPE	39000	<b>36000</b>	18500	<b>18000</b>	50	<b>50</b>	20450	<b>17950</b>
HARDING	41000	<b>46000</b>	17500	<b>18000</b>	50	<b>50</b>	23450	<b>27950</b>
HIDALGO	46000	<b>45000</b>	28000	<b>25000</b>	100	<b>50</b>	17900	<b>19950</b>
LEA	64000	<b>55000</b>	30500	<b>25000</b>	2300	<b>2900</b>	31200	<b>27100</b>
LINCOLN	37000	<b>33000</b>	21500	<b>19000</b>	200	<b>100</b>	15300	<b>13900</b>
LUNA	35000	<b>42000</b>	16000	<b>18000</b>	400	<b>350</b>	18600	<b>23650</b>
MCKINLEY	24000	<b>26000</b>	14000	<b>16000</b>	50	<b>50</b>	9950	<b>9950</b>
MORA	30000	<b>26000</b>	11500	<b>10500</b>	100	<b>50</b>	18400	<b>15450</b>
OTERO	31000	<b>28000</b>	19000	<b>19000</b>	50	<b>50</b>	11950	<b>8950</b>
QUAY	66000	<b>55000</b>	26000	<b>26000</b>	200	<b>200</b>	39800	<b>28800</b>
RIO ARRIBA	33000	<b>34000</b>	22000	<b>22000</b>	100	<b>50</b>	10900	<b>11950</b>
ROOSEVELT	54000	<b>50000</b>	17500	<b>15000</b>	6800	<b>7500</b>	29700	<b>27500</b>
SAN JUAN	26000	<b>28000</b>	12000	<b>12000</b>	1200	<b>1200</b>	12800	<b>14800</b>
SAN MIGUEL	63000	<b>55000</b>	25000	<b>24000</b>	100	<b>100</b>	37900	<b>30900</b>
SANDOVAL	17000	<b>18000</b>	9000	<b>9500</b>	1500	<b>1500</b>	6500	<b>7000</b>
SANTA FE	31000	<b>26000</b>	9500	<b>8000</b>	200	<b>150</b>	21300	<b>17850</b>
SIERRA	33000	<b>32000</b>	11500	<b>11000</b>	1900	<b>1800</b>	19600	<b>19200</b>
SOCORRO	49000	<b>48000</b>	25000	<b>25000</b>	2000	<b>1900</b>	22000	<b>21100</b>
TAOS	9000	<b>9000</b>	4500	<b>4500</b>	100	<b>100</b>	4400	<b>4400</b>
TORRANCE	25000	<b>24000</b>	13000	<b>12500</b>	100	<b>50</b>	11900	<b>11450</b>
UNION	133000	<b>110000</b>	31000	<b>30000</b>	400	<b>400</b>	101600	<b>79600</b>
VALENCIA	13000	<b>14000</b>	5000	<b>5000</b>	4300	<b>4100</b>	3700	<b>4900</b>
STATE	1450000	<b>1390000</b>	591000	<b>578000</b>	59000	<b>62000</b>	800000	<b>750000</b>

<sup>1/</sup> As of January 1.

<sup>2/</sup> Includes cattle on feed.

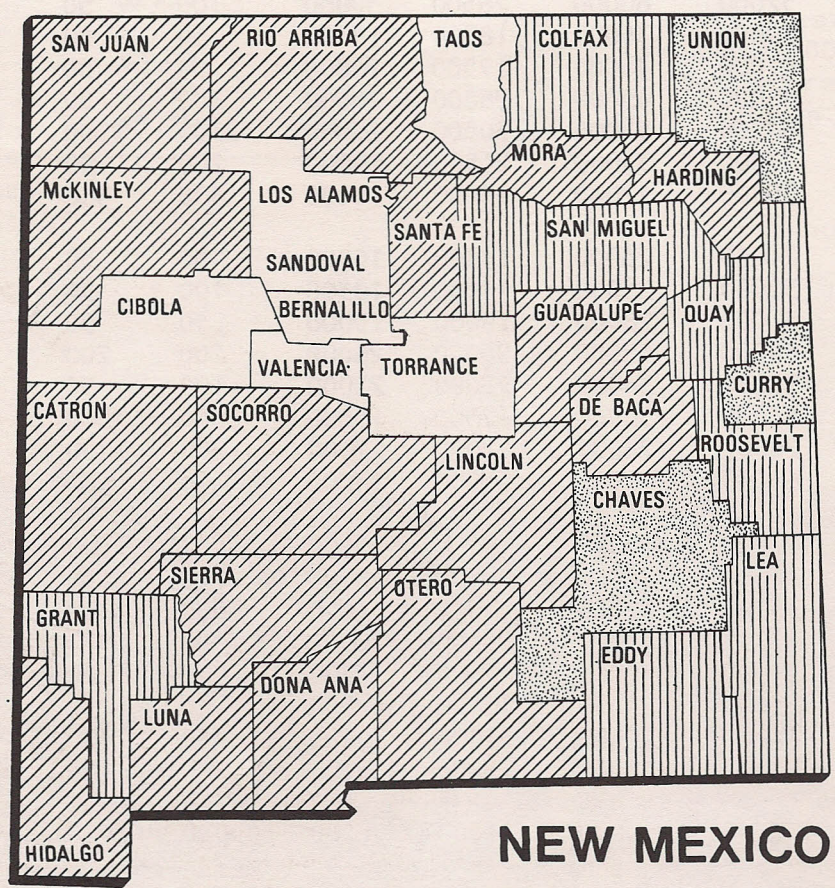
## Number of Cattle on Feed by County <sup>1/</sup>

County	Number on Feed						1984
	1978	1979	1980	1981	1982	1983	
	-----Head-----						
CHAVES	47800	45600	84400	53100	18000	24300	<b>26400</b>
CURRY	37400	50400	55800	32000	22600	36300	<b>37600</b>
UNION	55000	36000	40200	48100	40900	51400	<b>47400</b>
OTHER COUNTIES	65800	70000	58600	52800	45500	37000	<b>34600</b>
STATE	206000	202000	239000	186000	127000	149000	<b>146000</b>

<sup>1/</sup> Includes only those animals on full feed for the slaughter market.

### ALL CATTLE AND CALVES

January 1, 1984



### NEW MEXICO

<table style="width: 100%; border-collapse: collapse;"> <tr> <td style="width: 20px; height: 10px; border: 1px solid black;"></td> <td>LESS THAN 25,000</td> </tr> <tr> <td style="width: 20px; height: 10px; border: 1px solid black; background: repeating-linear-gradient(45deg, transparent, transparent 2px, black 2px, black 4px);"></td> <td>25,000 - 49,999</td> </tr> <tr> <td style="width: 20px; height: 10px; border: 1px solid black; background: repeating-linear-gradient(-45deg, transparent, transparent 2px, black 2px, black 4px);"></td> <td>50,000 - 74,999</td> </tr> <tr> <td style="width: 20px; height: 10px; border: 1px solid black; background: radial-gradient(circle, black 1px, transparent 1px); background-size: 4px 4px;"></td> <td>75,000 +</td> </tr> </table>		LESS THAN 25,000		25,000 - 49,999		50,000 - 74,999		75,000 +	<p style="text-align: center; margin: 0;"><b>5 LEADING COUNTIES</b></p> <table style="width: 100%; border-collapse: collapse; margin: 0;"> <tr> <td style="width: 60%;">CHAVES</td> <td style="text-align: right;">- 115,000</td> </tr> <tr> <td>UNION</td> <td style="text-align: right;">- 110,000</td> </tr> <tr> <td>CURRY</td> <td style="text-align: right;">- 90,000</td> </tr> <tr> <td>COLFAX</td> <td style="text-align: right;">- 62,000</td> </tr> <tr> <td>GRANT</td> <td style="text-align: right;">- 60,000</td> </tr> </table>	CHAVES	- 115,000	UNION	- 110,000	CURRY	- 90,000	COLFAX	- 62,000	GRANT	- 60,000
	LESS THAN 25,000																		
	25,000 - 49,999																		
	50,000 - 74,999																		
	75,000 +																		
CHAVES	- 115,000																		
UNION	- 110,000																		
CURRY	- 90,000																		
COLFAX	- 62,000																		
GRANT	- 60,000																		

# Milk

## Production, Disposition, Price and Income

Year	Milk Cows On Farms	Milk Production Per Cow	Total Milk Production	Used on Farms	Disposition of Milk Produced		Milk and Cream		Value of Sales	Income From Dairy Products
					Sold Wholesale	Price	Retailed by Farmers	Price		
					Whole Milk	Per 100 Pounds	Milk Equivalent	Per Quart		
	1000 Head	Pounds	-----Million Pounds-----		Dollars	Million Quarts	Cents	---1000 Dollars---		
1974	30	11267	338	10	309	9.60	8.8	43.0	33464	34178
1975	32	11438	366	11	335	9.75	9.3	48.0	37128	37860
1976	32	12656	405	11	375	10.70	8.8	48.0	44367	45155
1977	33	12909	426	11	398	10.80	7.9	51.0	47017	47810
1978	36	12722	458	14	430	11.50	6.5	50.0	52706	53774
1979	38	13342	507	14	479	13.00	6.5	50.0	65526	66722
1980	45	13378	602	14	575	14.10	6.0	53.0	84280	85570
1981	51	13157	671	11	645	15.30	7.0	57.0	102662	103595
1982	57	14246	812	15	780	15.30	7.9	57.0	123847	125090
<b>1983</b>	<b>61</b>	<b>15377</b>	<b>938</b>	<b>12</b>	<b>905</b>	<b>14.70</b>	<b>9.8</b>	<b>56.0</b>	<b>138505</b>	<b>139552</b>

## Prices Received for Milk

Year and Month	\$/cwt.
1983 JANUARY	15.55
FEBRUARY	15.36
MARCH	15.10
APRIL	15.09
MAY	14.19
JUNE	14.03
JULY	13.98
AUGUST	14.29
SEPTEMBER	14.58
OCTOBER	14.85
NOVEMBER	14.96
DECEMBER	14.97
<b>1983</b>	<b>14.70</b>
1982	15.30
1981	15.30
1980	14.10
1979	13.00



Photo by Eugene Burton

# Sheep and Lambs

## All Sheep and Lambs, Number and Value <sup>1/</sup>

Year	Number 1000 Head	Value Per Head Dollars	Total Value 1000 Dollars
1974	672	30.50	20496
1975	578	25.50	14739
1976	590	35.00	20650
1977	560	40.50	22680
1978	571	47.50	27123
1979	604	68.00	41072
1980	660	77.00	50820
1981	650	62.50	40625
1982	615	50.00	30750
1983	610	47.50	28975
<b>1984</b>	<b>589</b>	<b>43.50</b>	<b>25622</b>

<sup>1/</sup> As of January 1.

The drought of 1983 was extremely hard on the sheep producers in the southeastern quadrant of the State. Operations in the major producing areas were forced to reduce inventory numbers because of limited range forage. Inventory of all sheep on January 1, 1984 totaled 589,000 head, 3 percent below last years inventory level. Sheep and lambs on feed partially offset declining inventory numbers by increasing 42 percent from 1983, totaling 64,000 head. Stock sheep, at 525,000, declined 40,000 head from 1983, 7 percent below the previous year. The 1983 lamb crop is estimated at 350,000 head, 25,000 fewer than were saved in 1982. Lamb's saved per 100 ewes one year old and older averaged 77 in 1983 compared with 80 in 1982 and 87 in 1981.





## Commercial Slaughter: Sheep

	1979	1980	1981	1982	1983
Number (1000 Head)	79.9	89.8	86.5	117.6	<b>141.0</b>
Total Liveweight (1000 Pounds)	9779	10894	9903	13080	<b>15878</b>

### Number of Sheep on Farms by County <sup>1/</sup>

County	1984 Rank by County	1982	1983	1984
		Head		
BERNALILLO	19	3000	3000	<b>3000</b>
CATRON	27	500	500	<b>500</b>
CHAVES	1	155500	165000	<b>155000</b>
CIBOLA	7	19000	18000	<b>18000</b>
COLFAX	20	3000	2000	<b>2000</b>
CURRY	17	8000	6000	<b>5000</b>
DE BACA	8	19000	17000	<b>17000</b>
DONA ANA	24	1500	1400	<b>1400</b>
EDDY	6	33000	32000	<b>29000</b>
GRANT	31	100	100	<b>100</b>
GUADALUPE	5	40000	40000	<b>39000</b>
HARDING	26	800	800	<b>800</b>
HIDALGO	28	700	500	<b>300</b>
LEA	12	12000	10000	<b>9000</b>
LINCOLN	3	88000	88000	<b>87000</b>
LUNA	28	100	100	<b>300</b>
MCKINLEY	2	97000	97000	<b>96000</b>
MORA	20	2300	2300	<b>2000</b>
OTERO	9	17000	17000	<b>15000</b>
QUAY	18	4200	4200	<b>4000</b>
RIO ARRIBA	11	13000	10000	<b>10000</b>
ROOSEVELT	14	5300	6000	<b>6000</b>
SAN JUAN	4	50000	50000	<b>47000</b>
SAN MIGUEL	20	1000	1000	<b>2000</b>
SANDOVAL	14	4000	5000	<b>6000</b>
SANTA FE	20	3000	2000	<b>2000</b>
SIERRA	30	200	200	<b>200</b>
SOCORRO	16	5400	5400	<b>5400</b>
TAOS	13	8000	6500	<b>7000</b>
TORRANCE	10	13000	12000	<b>12000</b>
UNION	25	1400	1000	<b>1000</b>
VALENCIA	14	6000	6000	<b>6000</b>
STATE		615000	610000	<b>589000</b>

<sup>1/</sup> As of January 1.

## Sheep and Lamb Production and Income

Year	Production	Sales	Price Per 100 Pounds		Value of Production	Cash Receipts	Value of Home Use	Gross Income
			Sheep	Lambs				
-----1000 Pounds-----			---Dollars---		-----1000 Dollars-----			
1974	18660	37620	12.40	36.80	5961	9699	650	10349
1975	20014	28005	11.20	40.90	7978	9044	745	9789
1976	16312	27270	12.10	45.50	7123	8678	896	9574
1977	14554	27836	13.30	53.10	7739	10469	953	11422
1978	14350	20217	20.60	67.90	9923	9740	1305	11045
1979	19668	25172	27.80	71.90	13004	14876	1635	16511
1980	16226	27786	22.60	61.90	9224	12811	1166	13977
1981	23519	34683	22.70	51.00	10888	14785	1235	16020
1982	21287	26451	18.20	48.60	9179	10172	1090	11262
<b>1983</b>	<b>21912</b>	<b>31732</b>	<b>15.00</b>	<b>50.10</b>	<b>9882</b>	<b>11773</b>	<b>904</b>	<b>12677</b>

## Number of Sheep on Farms by Classes <sup>1/</sup>

Year	Total Sheep	Sheep On Feed	Stock Sheep				
			Total	Lambs		One Year and Over	
				Ewes	Wethers and Rams	Ewes	Wethers and Rams
-----1000 Head-----							
1974	672	52	620	105	16	476	23
1975	578	28	550	77	11	440	22
1976	590	23	567	79	11	454	23
1977	560	24	536	72	11	429	24
1978	571	25	546	76	9	437	24
1979	604	49	555	92	8	432	23
1980	660	65	595	96	8	468	23
1981	650	55	595	96	8	468	23
1982	615	20	595	96	8	468	23
1983	610	45	565	81	9	452	23
<b>1984</b>	<b>589</b>	<b>64</b>	<b>525</b>	<b>57</b>	<b>11</b>	<b>435</b>	<b>22</b>

<sup>1/</sup> As of January 1.

## Number of Sheep on Feed by County <sup>1/</sup>

County	1979	1980	1981	1982	1983	1984
-----Head-----						
CHAVES	44500	53400	33000	15000	41500	<b>39000</b>
OTHER COUNTIES	4500	11600	22000	5000	3500	<b>25000</b>
STATE	49000	65000	55000	20000	45000	<b>64000</b>

<sup>1/</sup> As of January 1.

## Sheep and Lamb Inventory Numbers, Lamb Crop and Disposition

Year	Total Sheep & Lambs	Lambs Saved		Inshipments Sheep & Lambs	Marketings		Slaughter Sheep & Lambs	Deaths	
		Number	As % of Ewes 1 Yr. & Older		Sheep	Lambs		Sheep	Lambs
---1000 Head---		---Percent---		-----1000 Head-----					
1974	672	395	83	115	148	259	31	80	86
1975	578	400	91	119	71	250	33	78	75
1976	590	345	76	102	98	204	35	75	65
1977	560	322	75	174	95	215	33	77	65
1978	571	323	74	110	71	141	33	85	70
1979	604	363	84	153	64	226	35	75	60
1980	660	356	76	132	98	210	30	80	80
1981	650	407	87	116	90	308	35	65	60
1982	615	375	80	82	78	223	35	65	61
<b>1983</b>	<b>610</b>	<b>350</b>	<b>77</b>	<b>104</b>	<b>104</b>	<b>224</b>	<b>32</b>	<b>55</b>	<b>60</b>

## Wool

### Production and Value

Year	Sheep Shorn	Average Weight of Fleece	Produc- tion	Price Per Pound	Value
1974	610	9.9	6010	60	3606
1975	520	9.8	5120	52	2662
1976	500	9.8	4895	66	3231
1977	496	9.4	4656	71	3306
1978	532	9.6	5092	73	3717
1979	545	9.1	4978	92	4580
1980	555	9.2	5080	90	4572
1981	555	9.5	5280	106	5597
1982	515	9.6	4922	88	4331
<b>1983</b>	<b>530</b>	<b>9.1</b>	<b>4833</b>	<b>76</b>	<b>3673</b>

### Prices Received for Wool

Year and Month	¢/lb.	
1983	JANUARY	65
	FEBRUARY	66
	MARCH	88
	APRIL	82
	MAY	73
	JUNE	59
	JULY	63
	AUGUST	63
	SEPTEMBER	72
	OCTOBER	58
	NOVEMBER	42
	DECEMBER	76
<b>1983</b>		<b>76</b>
1982		88
1981		106
1980		90
1979		92

# Hogs and Pigs

## Production and Income

Year	Production	Marketings	Price Per 100 Pounds	Value of Production	Cash Receipts	Value of		Gross Income
						Home Use		
-----1000 Pounds-----			Dollars	-----1000 Dollars-----				
1974	22682	21982	35.50	8052	7804	611	8415	
1975	19357	19891	47.80	9244	9525	658	10183	
1976	26679	23375	45.40	12107	10622	439	11061	
1977	20520	22117	40.50	8287	8998	453	9451	
1978	19793	20391	47.90	9487	9835	371	10206	
1979	25422	19392	42.80	10879	8355	663	9018	
1980	23970	25592	39.10	9372	10080	437	10517	
1981	19828	20058	42.30	8468	8609	371	8980	
1982	13896	16090	51.90	7280	8435	336	8771	
<b>1983</b>	<b>12259</b>	<b>13088</b>	<b>49.10</b>	<b>6089</b>	<b>6519</b>	<b>324</b>	<b>6843</b>	

## Number of Hogs on Farms by Classes, Pig Crops, and Disposition

Year	On Hand Dec 1	Pig Crops						Disposition			
		Spring			Fall			Inship- ments	Market- ings <sup>1/</sup>	Farm Slaughter	Deaths
		Total Hogs	Sows Farrowed	Pigs Per Litter	Pigs Saved	Sows Farrowed	Pigs Per Litter				
		----- 1000 Head-----	Number	----- 1000 Head-----	Number	----- 1000 Head-----	Number	----- 1000 Head-----			
1974	66	7.0	7.50	53	6.6	7.20	48	4	96	5	8
1975	53	6.2	6.30	39	7.0	6.30	44	4	89	4	7
1976	73	9.4	7.30	69	9.8	6.20	61	4	103	3	8
1977	60	7.0	6.90	48	6.0	7.30	44	5	99	4	7
1978	50	6.0	7.80	47	5.0	7.90	40	4	92	3	6
1979	87	9.0	6.40	58	12.0	6.20	74	5	89	4	7
1980	74	6.0	7.00	42	9.0	7.60	68	4	116	4	7
1981	62	6.5	7.40	48	6.0	7.00	42	3	96	3	6
1982 <sup>2/</sup>	38	4.0	7.50	30	3.7	7.60	28	1.6	77.5	2.1	4.0
<b>1983 <sup>2/</sup></b>	<b>30</b>	<b>3.8</b>	<b>7.50</b>	<b>29</b>	<b>3.4</b>	<b>7.50</b>	<b>26</b>	<b>2.0</b>	<b>60.5</b>	<b>1.5</b>	<b>3.0</b>

<sup>1/</sup> Excludes inter-farm sales.

<sup>2/</sup> A decimal place was used for 1982 and 1983 estimates to avoid distorting smaller disposition categories.

## Commercial Slaughter: Hogs and Pigs

	1979	1980	1981	1982	1983
	-----1000-----				
Number (Head)	35.7	43.0	38.7	25.1	9.3
Total Liveweight (Lbs.)	7933	9853	8759	5543	2055

## Number of Hogs and Pigs on Farms by County<sup>1/</sup>

County	1983 Rank by County	1981	1982	1983
-----Head-----				
BERNALILLO	14	700	500	300
CATRON	23	200	100	100
CHAVES	7	5500	2400	1400
CIBOLA	23	300	100	100
COLFAX	16	500	200	200
CURRY	10	4000	2100	500
DE BACA	23	300	200	100
DONA ANA	4	3400	2100	1900
EDDY	16	2000	400	200
GRANT	23	200	100	100
GUADALUPE	23	400	200	100
HARDING	23	100	100	100
HIDALGO	2	8500	6500	6300
LEA	12	1000	400	400
LINCOLN	23	200	100	100
LUNA	1	10500	7500	7800
MCKINLEY	16	200	100	200
MORA	23	700	500	100
OTERO	4	4200	2800	1900
QUAY	9	1600	800	800
RIO ARRIBA	16	300	200	200
ROOSEVELT	3	4000	2800	2400
SAN JUAN	14	400	400	300
SAN MIGUEL	12	700	200	400
SANDOVAL	16	700	600	200
SANTA FE	23	300	100	100
SIERRA	16	1900	500	200
SOCORRO	23	400	200	100
TAOS	16	300	200	200
TORRANCE	10	1300	800	500
UNION	6	5000	3200	1600
VALENCIA	8	2200	1600	1100
STATE		62000	38000	30000

<sup>1/</sup> As of December 1.

# Poultry

## Number of Chickens on Farms, by Classes and Inventory Value

Year	Total Chickens	Of Laying Age		Pullets		Chickens Raised	Value Per Head	Inventory Value
		Hens	Pullets	Not of Laying Age	Other			
		1000 Head				Dollars	1000 Dollars	
1974	1207	205	700	296	6	721	1.80	2173
1975	1470	607	500	356	7	1300	1.70	2499
1976	1450	442	660	336	12	1151	1.85	2683
1977	1970	690	658	620	2	1670	1.90	3743
1978	2110	928	619	561	2	1238	2.15	4536
1979	2190	800	819	569	2	1043	2.20	4818
1980	2145	715	820	605	5	1220	1.70	3647
1981	1825	939	570	310	6	850	1.95	3559
1982	1548	720	435	385	8	923	1.90	2941
<b>1983</b>	<b>1544</b>	<b>797</b>	<b>354</b>	<b>383</b>	<b>10</b>	<b>966</b>	<b>2.45</b>	<b>3783</b>

## Number Layers, Egg Production, Price and Income

Year	Average Number Layers	Egg Production	Eggs		Price	Cash Receipts	Value of Eggs Consumed	Gross Income
	On Hand		Consumed On Farm	Eggs Sold	Per Dozen		On Farm	
		1000 Head	Million Eggs		Cents	Thousand Dollars		
1974	906	197	3	194	58.5	9458	146	9604
1975	968	234	3	231	58.1	11184	145	11329
1976	1115	270	1	269	65.0	14571	54	14625
1977	1274	288	1	287	59.0	14111	49	14160
1978	1484	359	1	358	57.0	17000	48	17053
1979	1519	368	1	367	61.0	18655	51	18707
1980	1588	378	2	376	60.0	18800	100	18900
1981	1415	347	3	344	68.0	19493	170	19663
1982	1247	302	3	299	60.0	14950	150	15100
<b>1983</b>	<b>1180</b>	<b>287</b>	<b>3</b>	<b>284</b>	<b>63.0</b>	<b>14910</b>	<b>158</b>	<b>15068</b>

## Monthly Prices Received for Eggs

Year	Jan	Feb	Mar	Apr	May	June	July	Aug	Sept	Oct	Nov	Dec
Cents Per Dozen												
1979	66.0	62.0	71.0	65.0	56.0	61.0	57.0	53.0	58.0	55.0	65.0	73.0
1980	61.0	56.0	58.0	55.0	49.0	52.0	54.0	60.0	67.0	63.0	75.0	80.0
1981	67.0	65.0	64.0	70.0	60.0	59.0	66.0	64.0	67.0	72.0	75.0	72.0
1982	67.0	63.0	70.0	61.0	52.0	50.0	52.0	58.0	58.0	59.0	52.0	58.0
<b>1983</b>	<b>52.0</b>	<b>55.0</b>	<b>57.0</b>	<b>55.0</b>	<b>63.0</b>	<b>64.0</b>	<b>61.0</b>	<b>68.0</b>	<b>69.0</b>	<b>71.0</b>	<b>83.0</b>	<b>89.0</b>

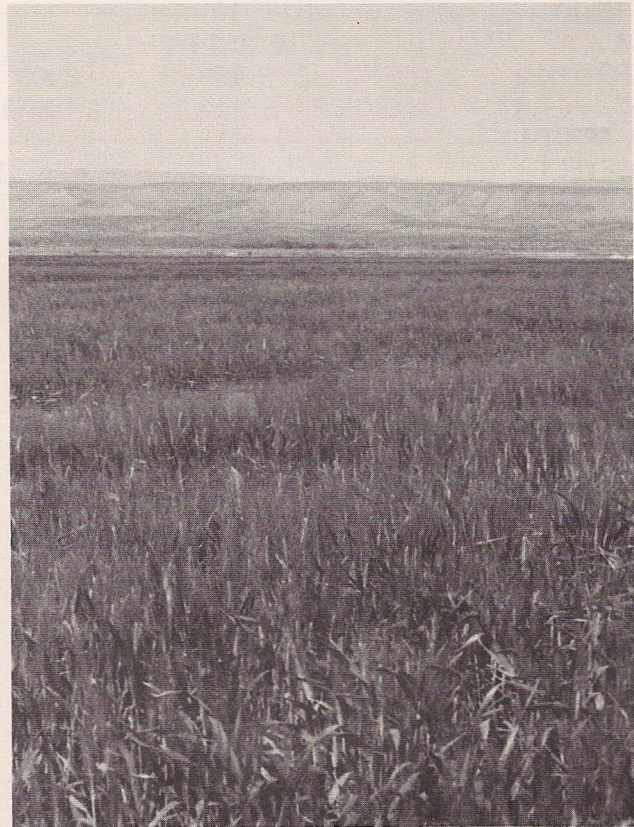
## Number of Chickens on Farms by County <sup>1/</sup>

County	1983 Rank In State	1981 <u>Head</u>	1982 <u>Head</u>	1983 <u>Head</u>
BERNALILLO	2	465000	480000	<b>465000</b>
CATRON	31	1000	500	<b>500</b>
CHAVES	7	8000	8000	<b>5000</b>
CIBOLA	26	1500	1000	<b>1000</b>
COLFAX	13	2500	2500	<b>2500</b>
CURRY	11	3000	3000	<b>3000</b>
DE BACA	26	900	1000	<b>1000</b>
DONA ANA	1	1250000	950000	<b>950000</b>
EDDY	4	13000	18000	<b>13000</b>
GRANT	16	1900	2000	<b>2000</b>
GUADALUPE	23	1000	1500	<b>1500</b>
HARDING	23	1500	1500	<b>1500</b>
HIDALGO	26	900	1000	<b>1000</b>
LEA	6	3300	2000	<b>7500</b>
LINCOLN	31	300	500	<b>500</b>
LUNA	26	1000	1000	<b>1000</b>
MCKINLEY	16	1500	2000	<b>2000</b>
MORA	16	1500	2000	<b>2000</b>
OTERO	13	2700	2500	<b>2500</b>
QUAY	16	2000	2000	<b>2000</b>
RIO ARRIBA	11	2600	3000	<b>3000</b>
ROOSEVELT	3	30000	33000	<b>45000</b>
SAN JUAN	7	4000	4000	<b>5000</b>
SAN MIGUEL	5	8000	8000	<b>8000</b>
SANDOVAL	23	1000	1000	<b>1500</b>
SANTA FE	16	1900	2000	<b>2000</b>
SIERRA	26	1100	1000	<b>1000</b>
SOCORRO	16	2000	2000	<b>2000</b>
TAOS	13	2900	3000	<b>2500</b>
TORRANCE	16	2000	2000	<b>2000</b>
UNION	10	2000	2000	<b>3500</b>
VALENCIA	9	5000	5000	<b>4000</b>
STATE		1825000	1548000	<b>1544000</b>

<sup>1/</sup> As of December 1.

## Field Crops

Principal crops grown in New Mexico during 1983 seemed to either flourish or falter due to extremes in weather conditions. Small grains and irrigated feed grains had very successful growing seasons, while spring seeded dryland crops suffered from a severe lack of moisture. Precipitation during the first three months of the year was running above normal in most areas. Reservoir storage in the Rio Grande Basin was above average by April 1 due to several strong storm systems in March. By the end of April, however, soil moisture supplies were being depleted in the eastern plains region of the State. Small grains would not be affected by the increasing shortage of moisture, as earlier accumulation was sufficient to take the crops through harvest. Both wheat and barley crops produced excellent yields. Spring planting was delayed due to cooler than normal soil temperatures, with most crops running about two weeks late. Alfalfa harvest also lagged behind normal. By August 1, accumulated rainfall was well below normal on the eastside. Dryland sorghum and cotton fields were questionable at this time, but the irrigated crops were generally rated good. As fall harvest time neared, the corn crop was in excellent shape, as was irrigated grain sorghum. Corn growers produced a record high 140 bushels per acre, as virtually all of the corn acreage is irrigated. A later than normal growing season allowed irrigated cotton fields to fully mature and produce extremely high yields. The south and east portions of the State continued to suffer from a drought situation as accumulated precipitation was only 50 percent of normal at some locations. Non-irrigated spring seeded crops generally produced disappointing yields. By year's end, fall seeded small grains for 1984 harvest were entering the dormant stage in favorable condition.





## Acreage and Value of Principal Field Crops

Commodity	Year	Unit	Acreage	Yield Per	Production	Season Avg.	Value of
			Harvested	Acres		Price	Production
			1000 Acres	Unit	1000	Dollars	1000 Dollars
<b>GENERAL CROPS</b>							
CORN FOR GRAIN	1982	BU.	65	125.0	8125	2.91	23644
	1983	BU.	50	140.0	7000	3.45	24150
CORN FOR SILAGE	1982	TONS	23	22.0	506	---	---
	1983	TONS	18	22.0	396	---	---
CORN FOR FORAGE	1982	---	1	---	---	---	---
	1983	---	1	---	---	---	---
WINTER WHEAT	1982	BU.	510	25.0	12750	3.62	46155
	1983	BU.	470	29.0	13630	3.65	49750
BARLEY	1982	BU.	37	66.0	2442	2.40	5861
	1983	BU.	23	75.0	1725	2.80	4830
SORGHUM GRAIN	1982	BU.	280	47.0	13160	2.72	35795
	1983	BU.	150	42.0	6300	3.02	19026
SORGHUM SILAGE	1982	TONS	7	23.0	161	---	---
	1983	TONS	16	17.0	272	---	---
SORGHUM FORAGE	1982	---	20	---	---	---	---
	1983	---	14	---	---	---	---
UPLAND COTTON	1982	LBS.	68	551	78 1/	.597	22352
	1983	LBS.	47	715	70 1/	.742	24931
AMERICAN-PIMA COTTON	1982	LBS.	9.4	511	10.0 1/	1.02	4896
	1983	LBS.	11.1	683	15.8 1/	1.16	8797
COTTONSEED	1982	TONS	---	---	39.0	82.00	3198
	1983	TONS	---	---	34.3	168.00	5762
POTATOES	1982	CWT.	4.9	260	1274	5.25	6689
	1983	CWT.	5.7	285	1625	6.40	10400
PEANUTS	1982	LBS.	10.4	2425	25220	.302	7616
	1983	LBS.	11.0	2330	25630	.292	7484
SUGARBEETS	1982	TONS	.7	17.1	12	36.10	433
	1983	TONS	---	---	---	---	---
<b>HAY CROPS</b>							
ALL HAY	1982	TONS	320	4.21	1348	75.00	101100
	1983	TONS	320	4.38	1401	89.00	124689
ALFALFA HAY	1982	TONS	250	5.00	1250	---	---
	1983	TONS	250	5.10	1275	---	---
ALL OTHER HAY	1982	TONS	70	1.40	98	---	---
	1983	TONS	70	1.80	126	---	---

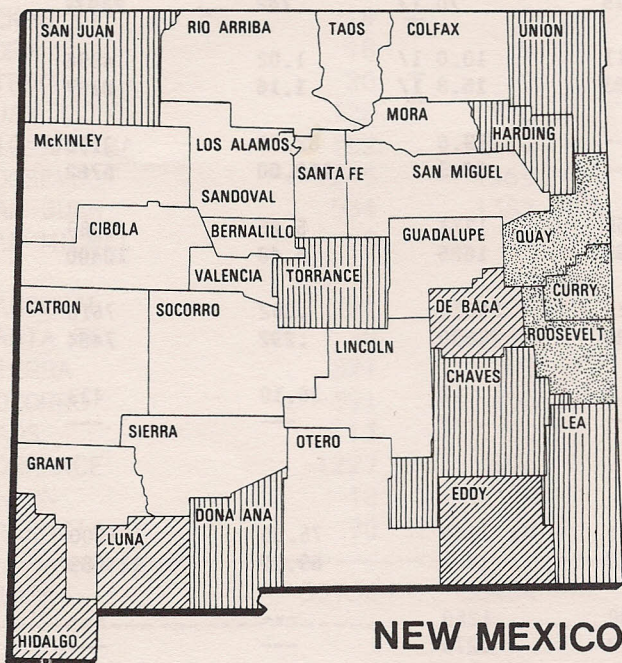
1/ 480 pound net weight bales.

# Wheat

## Acreage, Production and Value

Year	Acreage		Yield Per	Production	Price	Value
	Planted	Harvested	Harvested		Per	of
	1000 Acres	1000 Acres	Acre Bushels		Bushel Dollars	Production Dollars
1974	476	200	17.0	3400	4.00	13600
1975	505	440	26.0	11440	3.52	40269
1976	510	245	23.0	5635	2.91	16398
1977	572	421	21.0	8841	2.18	19273
1978	559	336	18.0	6048	2.85	17237
1979	576	410	22.0	9020	3.91	35268
1980	650	500	21.0	10500	3.76	39480
1981	700	500	22.0	11000	3.64	40040
1982	730	510	25.0	12750	3.62	46155
<b>1983</b>	<b>750</b>	<b>470</b>	<b>29.0</b>	<b>13630</b>	<b>3.65</b>	<b>49750</b>

**WHEAT**  
Bushels Produced  
1983



**NEW MEXICO**

- LESS THAN 50,000
- 50,000 - 99,999
- 100,000 - 999,999
- 1,000,000 +

**5 LEADING COUNTIES**

CURRY	- 5,480,600
ROOSEVELT	- 3,098,600
QUAY	- 2,409,000
UNION	- 851,200
LEA	- 361,400

New Mexico wheat growers produced a record high 13,630,000 bushels in 1983, compared with 12,750,000 bushels the previous year. Acres harvested in 1983 fell 8 percent from the previous year, but yield increased 4.0 bushels to a near record 29.0 bushels per acre. Favorable weather patterns during the growing season and at harvest were responsible for the record production, along with USDA's Payment in Kind (PIK) program which allowed farmers to take marginal wheat fields out of production and receive government wheat in exchange. This left better yielding fields for harvest which pushed the State average yield to 29.0 bushels per acre. The average price received for the 1983 crop increased \$.03 per bushel to \$3.65. Value of the crop reached a record \$49.8 million, up 8 percent from a year earlier.



# All Hay

## Acreage, Production, Value and Farm Stocks

Crop Year	Acreage Harvested 1000 Acres	Yield Per Harvested	Production 1000 Tons	Price Per Ton	Value of Production	On Farm Stocks	
		Acre Tons		Dollars	1000 Dollars	Jan. 1	May 1
						1000 Tons	
1974	285	3.51	1001	58.50	58559	300	80
1975	290	3.59	1041	54.00	56214	370	80
1976	297	3.37	1000	63.50	63500	281	83
1977	308	3.75	1155	58.50	67568	310	100
1978	310	3.52	1092	64.00	69888	393	127
1979	319	3.76	1199	69.00	82731	426	66
1980	310	3.69	1144	86.50	98956	456	108
1981	335	4.03	1350	84.00	113400	343	114
1982	320	4.21	1348	75.00	101100	594	122
<b>1983</b>	<b>320</b>	<b>4.38</b>	<b>1401</b>	<b>89.00</b>	<b>124689</b>	<b>566</b>	<b>148</b>
<b>1984</b>	<b>---</b>	<b>---</b>	<b>---</b>	<b>---</b>	<b>---</b>	<b>350</b>	<b>70</b>

## Acreage, Yield and Production by County

County	-----1982-----			-----1983-----		
	Acreage Harvested	Yield Per Acre	Production	Acreage Harvested	Yield Per Acre	Production
	Acres	Tons	Tons	Acres	Tons	Tons
BERNALILLO	4400	5.3	23450	<b>4600</b>	<b>3.6</b>	<b>16600</b>
CATRON	550	2.2	1200	<b>500</b>	<b>2.2</b>	<b>1100</b>
CHAVES	51500	6.2	321850	<b>51300</b>	<b>6.4</b>	<b>328100</b>
CIBOLA	1200	2.8	3400	<b>1400</b>	<b>2.7</b>	<b>3800</b>
COLFAX	11800	2.2	25400	<b>12400</b>	<b>2.7</b>	<b>33700</b>
CURRY	12550	2.1	26050	<b>12900</b>	<b>2.5</b>	<b>32200</b>
DE BACA	6050	5.0	30150	<b>5800</b>	<b>4.4</b>	<b>25300</b>
DONA ANA	17100	6.0	101800	<b>17200</b>	<b>6.1</b>	<b>105300</b>
EDDY	36150	5.8	209850	<b>36700</b>	<b>6.3</b>	<b>231200</b>
GRANT	900	3.7	3300	<b>900</b>	<b>3.1</b>	<b>2800</b>
GUADALUPE	1650	3.4	5550	<b>1600</b>	<b>3.0</b>	<b>4800</b>
HARDING	3000	1.1	3150	<b>3000</b>	<b>1.0</b>	<b>3000</b>
HIDALGO	1750	4.1	7250	<b>1300</b>	<b>3.8</b>	<b>4900</b>
LEA	11950	4.0	47750	<b>11100</b>	<b>3.9</b>	<b>43300</b>
LINCOLN	600	3.6	2150	<b>700</b>	<b>5.4</b>	<b>3800</b>
LUNA	2550	5.7	14550	<b>2750</b>	<b>5.4</b>	<b>14900</b>
MCKINLEY	1000	1.9	1900	<b>1000</b>	<b>2.3</b>	<b>2300</b>
MORA	7750	1.7	13300	<b>7800</b>	<b>1.7</b>	<b>13000</b>
OTERO	3800	5.2	19900	<b>3800</b>	<b>5.4</b>	<b>20600</b>
QUAY	9000	3.5	31700	<b>9000</b>	<b>4.4</b>	<b>39500</b>
RIO ARRIBA	14400	1.5	21450	<b>13100</b>	<b>1.9</b>	<b>25000</b>
ROOSEVELT	7900	3.3	26250	<b>8300</b>	<b>3.6</b>	<b>30000</b>
SAN JUAN	29600	3.9	116500	<b>30000</b>	<b>4.3</b>	<b>129000</b>
SAN MIGUEL	7000	2.2	15450	<b>7200</b>	<b>2.1</b>	<b>14800</b>
SANDOVAL	5250	2.3	12150	<b>5100</b>	<b>2.8</b>	<b>14100</b>
SANTA FE	6100	3.6	22000	<b>5800</b>	<b>4.1</b>	<b>23700</b>
SIERRA	3300	5.4	17700	<b>3550</b>	<b>5.7</b>	<b>20300</b>
SOCORRO	12050	4.4	52700	<b>12000</b>	<b>4.5</b>	<b>54300</b>
TAOS	14150	1.5	20550	<b>14100</b>	<b>1.8</b>	<b>25000</b>
TORRANCE	8400	4.3	35700	<b>8500</b>	<b>3.7</b>	<b>31400</b>
UNION	10850	3.4	37400	<b>10800</b>	<b>3.2</b>	<b>34700</b>
VALENCIA	15750	4.9	76500	<b>15800</b>	<b>4.3</b>	<b>68500</b>
STATE	320000	4.2	1348000	<b>320000</b>	<b>4.4</b>	<b>1401000</b>

# Alfalfa and Other Hay

## Acreage, Yield and Production

Year	-----Alfalfa Hay-----			-----All Other Hay-----		
	Acreage	Yield Per	Production	Acreage	Yield Per	Production
	Harvested	Acre		Harvested	Acre	
Acres	Tons	Tons	Acres	Tons	Tons	
1974	217	4.30	933	68	1.00	68
1975	219	4.30	942	71	1.40	99
1976	230	4.00	920	67	1.20	80
1977	238	4.50	1071	70	1.20	84
1978	240	4.20	1008	70	1.20	84
1979	245	4.50	1103	74	1.30	96
1980	240	4.30	1032	70	1.60	112
1981	260	4.70	1222	75	1.70	128
1982	250	5.00	1250	70	1.40	98
1983	250	5.10	1275	70	1.80	126

## Acreage, Yield and Production by County

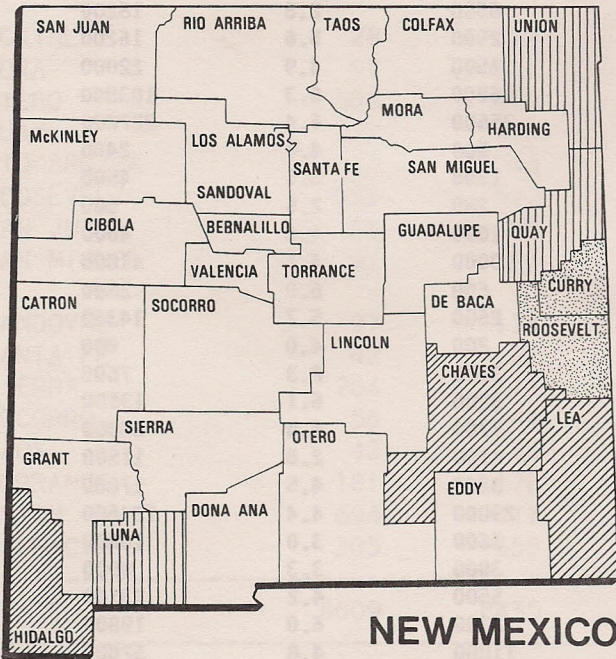
County	-----1982-----			-----1983-----		
	Acreage	Yield Per	Production	Acreage	Yield Per	Production
	Harvested	Acre		Harvested	Acre	
Acres	Tons	Tons	Acres	Tons	Tons	
BERNALILLO	3900	5.7	22200	4000	3.8	15200
CATRON	300	3.0	900	300	3.0	900
CHAVES	50000	6.4	319000	50000	6.5	324600
CIBOLA	900	3.6	3200	1100	3.2	3500
COLFAX	6800	2.7	18400	6500	2.8	18200
CURRY	3000	5.5	16500	2900	5.6	16200
DE BACA	5000	5.5	27500	4500	4.9	22000
DONA ANA	16500	6.1	100600	16500	6.3	103900
EDDY	35000	5.9	205800	35500	6.4	227200
GRANT	600	4.5	2700	600	4.0	2400
GUADALUPE	1300	4.0	5200	1300	3.5	4500
HARDING	200	3.0	600	200	2.5	500
HIDALGO	1500	4.7	7000	1000	4.6	4600
LEA	10800	4.2	45300	10000	4.1	41000
LINCOLN	500	4.0	2000	600	6.0	3600
LUNA	2300	6.0	13800	2500	5.7	14300
MCKINLEY	200	3.0	600	200	4.0	800
MORA	3200	2.3	7400	3300	2.3	7600
OTERO	3200	5.9	18900	3200	6.1	19500
QUAY	7700	3.8	29600	7700	4.8	36900
RIO ARRIBA	3900	2.0	7800	4100	2.8	11500
ROOSEVELT	3800	5.4	20500	3800	4.5	17000
SAN JUAN	28500	4.0	115000	29000	4.4	127600
SAN MIGUEL	3500	3.5	12300	3600	3.0	10800
SANDOVAL	2900	3.0	8700	3000	3.3	9900
SANTA FE	5800	3.7	21500	5500	4.2	23100
SIERRA	3000	5.7	17100	3300	6.0	19800
SOCORRO	11000	4.6	50500	11000	4.8	52800
TAOS	8900	1.9	16900	9200	2.0	18400
TORRANCE	7000	4.8	33600	7200	4.0	28800
UNION	4800	5.4	25900	4400	5.3	23200
VALENCIA	14000	5.2	73000	14000	4.6	64700
STATE	250000	5.0	1250000	250000	5.1	1275000

# Sorghum

## Acreage, Production and Value

Crop Year	Planted For All Purposes	Harvested for Grain					Harvested for Silage		
		Acreage	Yield	Production	Price Per Bushel	Value of Production	Acreage	Yield	Production
		1000 Acres	1000 Bushels	1000 Bushels	Dollars	1000 Dollars	1000 Acres	Tons	1000 Tons
1974	343	220	50.0	11000	3.09	33990	4	15.0	60
1975	353	310	50.0	15500	2.46	38130	3	13.0	39
1976	272	199	60.0	11940	2.02	24119	5	11.0	55
1977	297	245	48.0	11760	1.88	22109	8	12.0	96
1978	336	267	46.0	12282	2.22	27266	9	13.0	117
1979	319	258	52.0	13416	2.49	33406	9	13.5	122
1980	340	257	40.0	10280	3.42	35158	11	12.5	138
1981	335	272	45.0	12240	2.47	30233	7	17.0	119
1982	330	280	47.0	13160	2.72	35795	7	23.0	161
<b>1983</b>	<b>200</b>	<b>150</b>	<b>42.0</b>	<b>6300</b>	<b>3.02</b>	<b>19026</b>	<b>16</b>	<b>17.0</b>	<b>272</b>

**GRAIN SORGHUM**  
Bushels Produced  
1983



**NEW MEXICO**

5 LEADING COUNTIES	
CURRY	- 2,500,000
ROOSEVELT	- 1,327,800
QUAY	- 687,000
UNION	- 679,000
LUNA	- 338,000



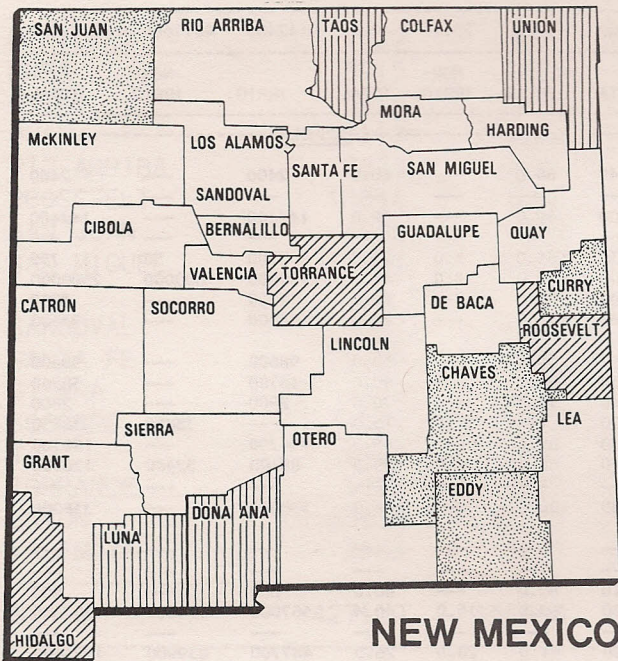


# Barley

## Acreage, Production and Value

Year	Acreage		Yield Per	Production	Price	Value
	Planted	Harvested	Harvested		Per	of
	1000 Acres	1000 Acres	Acre		Bushel	Production
			Bushels	1000 Bushels	Dollars	1000 Dollars
1974	28	20	49.0	980	2.30	2254
1975	36	28	58.0	1624	2.20	3573
1976	32	24	51.0	1224	2.17	2656
1977	35	26	51.0	1326	1.65	2188
1978	33	25	57.0	1425	1.95	2779
1979	36	27	58.0	1566	2.40	3758
1980	43	35	62.0	2170	2.55	5534
1981	38	28	67.0	1876	2.81	5272
1982	47	37	66.0	2442	2.40	5861
<b>1983</b>	<b>27</b>	<b>23</b>	<b>75.0</b>	<b>1725</b>	<b>2.80</b>	<b>4830</b>

**BARLEY**  
Bushels Produced  
1983



**5 LEADING COUNTIES**

EDDY	- 355,000
CURRY	- 312,600
SAN JUAN	- 302,600
CHAVES	- 266,000
DONA ANA	- 85,000

[White Box]	LESS THAN 25,000
[Diagonal Lines]	25,000 - 49,999
[Vertical Lines]	50,000 - 99,999
[Stippled Box]	100,000 +





## Barley County Estimates

County	1982				1983			
	Acreage Planted	Acreage Harvested For Grain	Yield Per Acre	Production	Acreage Planted	Acreage Harvested For Grain	Yield Per Acre	Production
	-----Acres-----		-----Bushels-----		-----Acres-----		-----Bushels-----	
BERNALILLO	100	---	---	---	100	100	60.0	6000
CATRON	50	---	---	---	50	---	---	---
CHAVES	8720	6500	63.4	412330	5900	4000	64.0	256000
CIBOLA	150	110	40.0	4400	---	---	---	---
COLFAX	100	100	33.0	3300	60	20	35.0	700
CURRY	10200	6150	92.7	570010	3700	3450	90.6	312600
DE BACA	300	300	60.0	18000	110	110	90.0	9900
DONA ANA	1570	1300	83.0	107850	1000	990	85.9	85000
EDDY	2980	2650	80.0	212000	4800	4750	74.7	355000
GRANT	260	---	---	---	350	100	83.0	8300
GUADALUPE	---	---	---	---	---	---	---	---
HARDING	---	---	---	---	---	---	---	---
HIDALGO	940	820	100.0	82000	350	350	100.0	35000
LEA	50	50	40.0	2000	80	60	35.0	2100
LINCOLN	---	---	---	---	---	---	---	---
LUNA	3220	2800	90.0	252000	1100	1100	77.0	84700
MCKINLEY	---	---	---	---	---	---	---	---
MORA	50	---	---	---	30	---	---	---
OTERO	880	700	40.0	28000	220	---	---	---
QUAY	700	400	18.0	7200	450	330	41.2	13600
RIO ARRIBA	50	30	21.7	650	---	---	---	---
ROOSEVELT	2100	1400	50.0	70000	1200	1000	40.0	40000
SAN JUAN	8350	8150	45.9	373800	3480	3400	89.0	302600
SAN MIGUEL	50	---	---	---	---	---	---	---
SANDOVAL	80	10	9.0	90	110	---	---	---
SANTA FE	100	---	---	---	100	---	---	---
SIERRA	---	---	---	---	---	---	---	---
SOCORRO	680	580	60.0	34800	350	350	62.0	21700
TAOS	3420	3150	54.9	173070	1430	1380	52.0	71700
TORRANCE	950	950	50.0	47500	750	440	62.0	27300
UNION	550	450	60.0	27000	900	850	86.5	73500
VALENCIA	400	400	40.0	16000	380	220	87.7	19300
STATE	47000	37000	66.0	2442000	27000	23000	75.0	1725000

# Corn

## Acreage, Production and Value

Crop Year	Planted For All Purposes	Harvested for Grain					Harvested for Silage		
		Acreage	Yield	Production	Price Per Bushel	Value of Production	Acreage	Yield	Production
		1000 Acres	1000 Bushels	1000 Bushels	Dollars	1000 Dollars	1000 Acres	Tons	1000 Tons
1974	77	49	77.0	3773	3.07	11583	23	15.0	345
1975	100	75	100.0	7500	2.62	19650	22	16.5	363
1976	125	96	105.0	10080	2.24	22579	24	13.5	324
1977	135	114	90.0	10260	2.10	21546	16	14.0	224
1978	105	72	106.0	7632	2.39	18240	29	15.0	435
1979	106	74	114.0	8436	2.81	23705	28	17.5	490
1980	105	75	90.0	6750	3.60	24300	26	14.0	364
1981	85	65	128.0	8320	2.84	23629	18	23.0	414
1982	90	65	125.0	8125	2.91	23644	23	22.0	506
<b>1983</b>	<b>70</b>	<b>50</b>	<b>140.0</b>	<b>7000</b>	<b>3.45</b>	<b>24150</b>	<b>18</b>	<b>22.0</b>	<b>396</b>

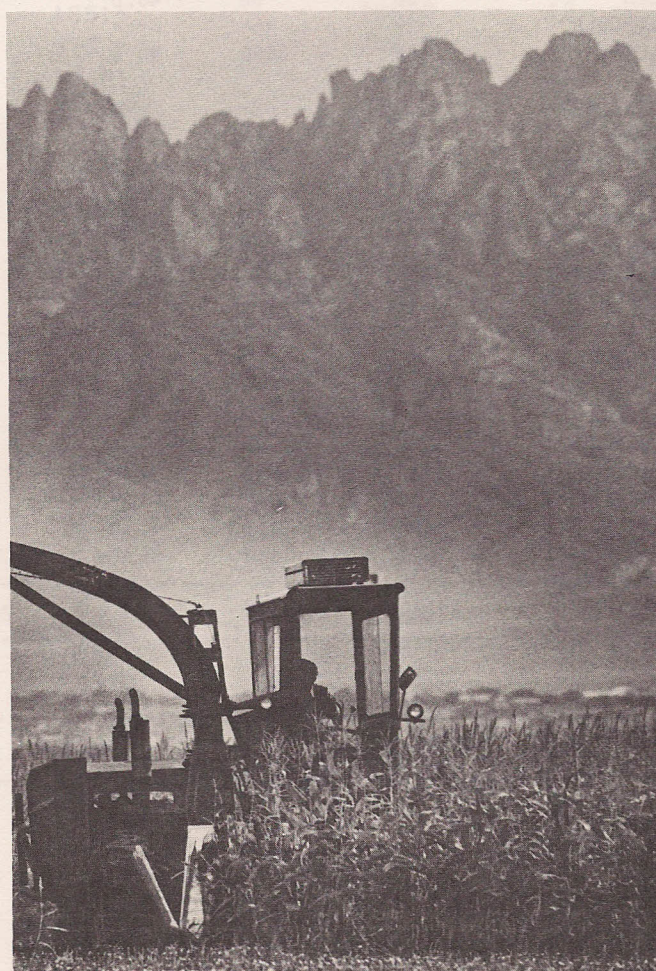
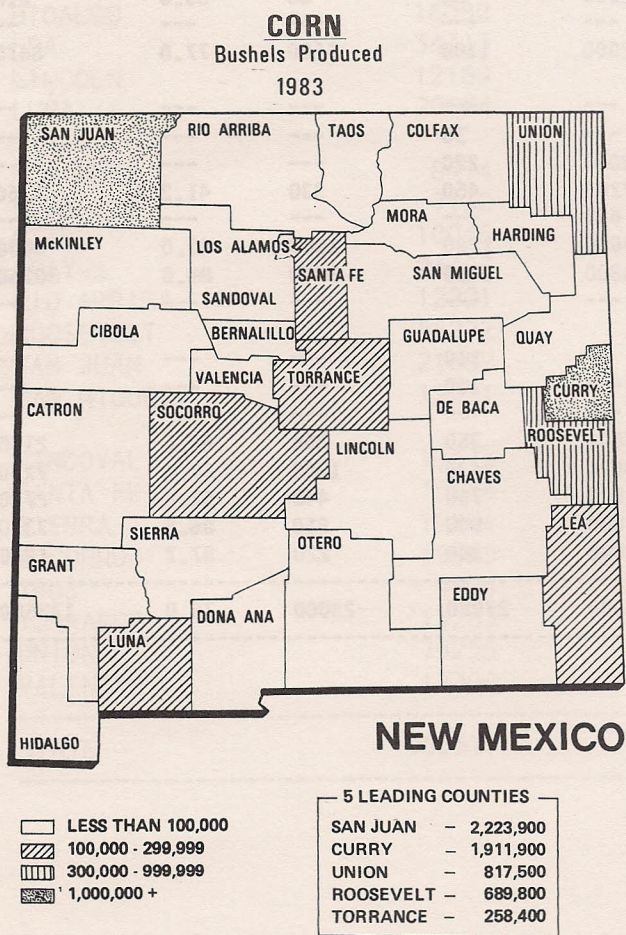


Photo by Eugene Burton

## Corn County Estimates

County	-----1982-----				-----1983-----			
	Acreage Planted	Acreage Harvested For Grain	Yield Per Acre	Production	Acreage Planted	Acreage Harvested For Grain	Yield Per Acre	Production
	-----Acres-----	-----Acres-----	-----Bushels-----	-----Bushels-----	-----Acres-----	-----Acres-----	-----Bushels-----	-----Bushels-----
BERNALILLO	1700	1000	90.4	90400	1500	300	85.0	25500
CATRON	100	50	90.0	4500	60	---	---	---
CHAVES	6300	1100	110.0	121000	2900	400	125.0	50000
CIBOLA	250	200	77.0	15400	300	240	43.8	10500
COLFAX	200	50	56.0	2800	40	40	60.0	2400
CURRY	17300	16600	143.6	2383400	12500	11000	173.8	1911900
DE BACA	100	50	72.0	3600	---	---	---	---
DONA ANA	2300	600	120.0	72000	1400	200	120.0	24000
EDDY	200	50	90.0	4500	370	200	90.0	18000
GRANT	300	250	90.0	22500	40	30	90.0	2700
GUADALUPE	300	100	60.0	6000	100	100	60.0	6000
HARDING	300	250	52.4	13100	---	---	---	---
HIDALGO	900	700	105.0	73500	400	400	118.0	47200
LEA	2700	2000	115.0	230000	2300	1990	122.2	243150
LINCOLN	---	---	---	---	---	---	---	---
LUNA	2400	1600	130.0	208000	1600	1500	117.2	175800
MCKINLEY	250	200	10.5	2100	350	350	15.0	5250
MORA	200	100	17.0	1700	160	80	15.0	1200
OTERO	100	50	86.0	4300	30	10	85.0	850
QUAY	700	400	80.0	32000	250	150	100.0	15000
RIO ARRIBA	150	100	26.0	2600	150	100	21.0	2100
ROOSEVELT	8800	8000	125.0	1000000	5550	5110	135.0	689800
SAN JUAN	16000	13700	135.0	1849500	17000	15100	147.3	2223900
SAN MIGUEL	400	200	23.0	4600	200	100	22.0	2200
SANDOVAL	2000	800	41.1	32900	1800	800	40.0	32000
SANTA FE	4500	1000	72.0	72000	4950	2450	70.0	171500
SIERRA	1300	300	100.0	30000	500	200	125.0	25000
SOCORRO	3800	2900	110.0	319000	3700	1770	125.0	221200
TAOS	150	100	21.0	2100	50	10	45.0	450
TORRANCE	5000	3650	100.0	365000	3500	1770	146.0	258400
UNION	8100	7900	135.0	1066500	5600	5450	150.0	817500
VALENCIA	3200	1000	90.0	90000	2700	150	110.0	16500
STATE	90000	65000	125.0	8125000	70000	50000	140.0	7000000

# Upland Cotton

## Acres, Production and Value

Crop Year	Acres		Yield Per Harvested Acre	Production (480 Lb. Net Weight Bale)	Price Per Pound	Value of Production
	Planted	Harvested				
	1000 Acres	1000 Acres	Net Pounds	1000 Bales	Cents	1000 Dollars
1974	151.0	140.0	509	148.0	44.50	31702
1975	95.0	85.0	382	68.0	54.60	17821
1976	68.0	64.0	523	70.0	70.00	23520
1977	131.0	128.0	603	161.0	54.00	41731
1978	137.0	109.0	443	101.0	62.00	30058
1979	154.0	126.0	396	104.0	68.50	34195
1980	151.0	120.0	428	107.0	81.00	41602
1981	136.0	106.0	602	133.0	60.00	38304
1982	79.0	68.0	551	78.0	59.70	22352
<b>1983</b>	<b>56.0</b>	<b>47.0</b>	<b>715</b>	<b>70.0</b>	<b>74.20</b>	<b>24931</b>

## Acres, Yield and Production by County

County	Acres				Yield Per Harvested Acre		Production (480 Pound Net Weight Bales)	
	Planted		Harvested		Acres		Bales	
	1982	1983	1982	1983	1982	1983	1982	1983
CHAVES	11700	<b>9000</b>	11600	<b>8950</b>	561	<b>794</b>	13550	<b>14800</b>
CURRY	3750	<b>2120</b>	2060	<b>1000</b>	352	<b>440</b>	1510	<b>915</b>
DE BACA	70	---	---	---	---	---	---	---
DONA ANA	11750	<b>7700</b>	11750	<b>7650</b>	743	<b>836</b>	18180	<b>13300</b>
EDDY	9000	<b>6700</b>	8950	<b>6500</b>	501	<b>808</b>	9350	<b>11000</b>
HIDALGO	7660	<b>3900</b>	7450	<b>3840</b>	455	<b>720</b>	7060	<b>5750</b>
LEA	7630	<b>6700</b>	4870	<b>3040</b>	332	<b>609</b>	3370	<b>3850</b>
LUNA	13930	<b>8000</b>	13840	<b>8000</b>	665	<b>900</b>	19170	<b>15000</b>
OTERO	220	<b>160</b>	220	<b>160</b>	578	<b>1163</b>	260	<b>380</b>
QUAY	1930	<b>1060</b>	1000	<b>600</b>	310	<b>260</b>	650	<b>325</b>
ROOSEVELT	11200	<b>10550</b>	6100	<b>7150</b>	368	<b>300</b>	4680	<b>4470</b>
SIERRA	160	<b>110</b>	160	<b>110</b>	675	<b>914</b>	220	<b>210</b>
STATE	79000	<b>56000</b>	68000	<b>47000</b>	551	<b>715</b>	78000	<b>70000</b>



## Cottonseed

### Production, Farm Disposition and Value

Crop Year	Production	Farm Disposition		Season Average Price Per Ton	Value of Production
		Sold To Oil Mills	Other 1/		
	-----1000 Tons-----			Dollars	1000 Dollars
1974	60.0	54.0	6.0	146.00	8760
1975	28.0	24.0	4.0	99.90	2797
1976	29.0	25.0	4.0	102.00	2958
1977	68.0	58.0	10.0	66.00	4488
1978	44.0	40.0	4.0	125.00	5500
1979	44.0	40.0	4.0	115.00	5060
1980	45.0	40.0	5.0	124.00	5580
1981	66.0	57.0	9.0	87.00	5742
1982	39.5	20.3	19.2	82.00	3239
<b>1983</b>	<b>34.3</b>	<b>31.7</b>	<b>2.6</b>	<b>168.00</b>	<b>5762</b>

1/ Includes planting seed, exports, inter-farm sales, shrinkage, losses and other uses.

# American-Pima Cotton

## Acreage, Production, Price and Value

Crop Year	Acreage		Yield Per Harvested Acre	Production (480 Lb. Net Weight Bale)	Price Per Pound	Value of Production
	Planted	Harvested				
	1000 Acres	1000 Acres	Net Pounds	1000 Bales	Cents	1000 Dollars
1974	14.6	14.5	417	12.6	65.50	3961
1975	13.3	12.5	195	5.1	80.50	1971
1976	6.5	6.3	476	6.2	105.00	3125
1977	9.4	9.3	621	12.0	85.00	4896
1978	14.1	13.7	454	13.0	90.00	5616
1979	16.0	14.8	246	7.5	101.00	3636
1980	7.1	7.0	464	6.8	105.00	3427
1981	7.1	6.8	558	7.9	103.00	3906
1982	9.5	9.4	511	10.0	102.00	4896
<b>1983</b>	<b>11.1</b>	<b>11.1</b>	<b>683</b>	<b>15.8</b>	<b>116.00</b>	<b>8797</b>

## Acreage, Yield and Production by County

County	Acres				Yield Per Harvested Acre	Production (480 Pound Net Weight Bales)		
	Planted		Harvested					
	1982	1983	1982	1983	Pounds	Bales		
DONA ANA	8980	<b>10030</b>	8930	<b>10030</b>	514	<b>696</b>	9560	<b>14535</b>
EDDY	10	<b>10</b>	---	<b>10</b>	---	<b>270</b>	---	<b>5</b>
LUNA	510	<b>1060</b>	470	<b>1060</b>	453	<b>570</b>	440	<b>1260</b>
STATE	9500	<b>11100</b>	9400	<b>11100</b>	511	<b>683</b>	10000	<b>15800</b>

# Irish Potatoes

## Acreage, Yield, Production, Price and Value

Crop Year	Acreage		Yield Per	Production	Price	Value
	Planted	Harvested	Harvested		Per	of
	1000 Acres	1000 Acres	Acres Cwt.	1000 Cwt.	Cwt. Dollars	Production Dollars
1974	4.5	4.2	200	840	2.95	2478
1975	3.7	3.5	200	700	2.70	1890
1976	3.2	3.2	180	576	3.10	1786
1977	3.2	2.9	190	551	3.50	1929
1978	3.8	3.8	205	779	5.00	3895
1979	4.5	4.4	275	1210	3.25	3933
1980	3.5	3.0	180	540	6.85	3699
1981	4.5	4.5	210	945	6.50	6143
1982	5.0	4.9	260	1274	5.25	6689
<b>1983</b>	<b>5.7</b>	<b>5.7</b>	<b>285</b>	<b>1625</b>	<b>6.40</b>	<b>10400</b>

## Acreage, Yield and Production by County

County	Acreage				Yield Per		Production	
	Planted		Harvested		Harvested		Acres 1/	
	1982	1983	1982	1983	1982	1983	1982	1983
CURRY	2300	<b>2100</b>	2270	<b>2100</b>	250	<b>280</b>	568000	<b>588000</b>
ROOSEVELT	1200	<b>1400</b>	1180	<b>1400</b>	225	<b>250</b>	266000	<b>350000</b>
SAN JUAN	700	<b>1300</b>	700	<b>1300</b>	350	<b>360</b>	245000	<b>468000</b>
TORRANCE	700	<b>800</b>	670	<b>800</b>	265	<b>250</b>	178000	<b>200000</b>
OTHER COUNTIES	100	<b>100</b>	80	<b>100</b>	210	<b>190</b>	17000	<b>19000</b>
STATE	5000	<b>5700</b>	4900	<b>5700</b>	260	<b>285</b>	1274000	<b>1625000</b>

1/ Rounded to the nearest five cwt.

# Peanuts

## Acreage, Yield, Production, Price and Value

Crop Year	Acreage Harvested	Yield Per Acre	Production	Price Per Pound	Value of Production
	<u>Acres</u>	<u>Pounds</u>	<u>1000 Pounds</u>	<u>Cents</u>	<u>1000 Dollars</u>
1974	7600	1715	13034	18.0	2346
1975	8800	2290	20152	22.0	4433
1976	9500	2280	21660	24.5	5307
1977	9400	2700	25380	25.0	6345
1978	9400	2560	24064	22.0	5294
1979	9200	2750	25300	22.6	5718
1980	8800	2540	22352	28.0	6259
1981	10000	2490	24900	27.0	6723
1982	10400	2425	25220	30.2	7616
<b>1983</b>	<b>11000</b>	<b>2330</b>	<b>25630</b>	<b>29.2</b>	<b>7484</b>

## Acreage, Yield and Production by County

County	1982			1983		
	Acreage Harvested	Yield Per Acre	Production	Acreage Harvested	Yield Per Acre	Production
	<u>Acres</u>	<u>Pounds</u>	<u>Pounds</u>	<u>Acres</u>	<u>Pounds</u>	<u>Pounds</u>
CURRY	250	2235	558700	<b>440</b>	<b>2129</b>	<b>936800</b>
LEA	520	3397	1766200	<b>600</b>	<b>2713</b>	<b>1628000</b>
QUAY	80	996	79700	<b>70</b>	<b>531</b>	<b>37200</b>
ROOSEVELT	9550	2389	22815400	<b>9890</b>	<b>2328</b>	<b>23028000</b>
STATE	10400	2425	25220000	<b>11000</b>	<b>2330</b>	<b>25630000</b>



# Grain Stocks

## Quantities Stored On and Off Farms

Year	January 1		April 1		June 1		October 1	
	On Farm Total	Off Farm Total	On Farm Total	Off Farm Total	On Farm Total	Off Farm Total	On Farm Total	Off Farm Total

-----1,000 Bushels-----

### BARLEY

1980	313	193	188	135	110	96	651	225
1981	434	117	347	39	174	16	657	256
1982	469	176	281	140	131	103	733	236
1983	488	85	317	72	147	1/	500	248
<b>1984</b>	<b>173</b>	<b>88</b>	<b>129</b>	<b>77</b>				

### CORN

1980	1687	1393	1097	1124	759	887	337	396
1981	1283	1294	810	884	540	662	135	276
1982	1664	1572	1248	1450	749	994	416	552
1983	1706	1964	1544	1903	813	1701	569	1473
<b>1984</b>	<b>1190</b>	<b>1444</b>	<b>910</b>	<b>873</b>				

### SORGHUM

1980	3354	5574	1878	3345	671	1731	268	500
1981	822	3191	411	2322	308	1526	103	738
1982	3060	5338	857	3600	734	2952	673	2326
1983	1842	5627	1579	4294	1448	3892	1053	3255
<b>1984</b>	<b>1449</b>	<b>4371</b>	<b>1260</b>	<b>2497</b>				

### WHEAT

1980	1353	1870	1173	1197	1082	1226	3045	3270
1981	1995	2184	1575	1747	1260	1648	2200	3191
1982	1650	2723	1320	2367	1210	2158	2933	5802
1983	1785	5662	1658	5337	1530	4836	1363	6052
<b>1984</b>	<b>1090</b>	<b>5208</b>	<b>818</b>	<b>4366</b>				

1/ Not shown to avoid disclosing individual operations.

# Fruits, Vegetables and Nuts

## Apples

New Mexico apple orchards were severely affected by below freezing temperatures at critical stages of development in 1983. This resulted in the lowest production of record over the past decade in the State. Growers produced only 6,000,000 pounds of the fruit in 1983, down 50 percent from the previous year. The average yield per bearing tree was just 55 pounds, compared with 108 pounds per tree in 1982. The average price received for 1983 harvested apples was \$.144 per pound, or \$6.04 per bushel. This compares with \$5.19 per bushel received for the 1982 crop. Value of the 1983 crop fell 42 percent to \$864,000.

### Production, Price and Value

Crop Year	Production	Price Per Bushel	Value of Production
	1000 Bushels	Dollars	1000 Dollars
1974	214	4.16	792
1975	262	5.25	1375
1976	500	4.91	2455
1977	595	4.83	2874
1978	405	4.07	1649
1979	333	5.46	1820
1980	286	5.22	1493
1981	405	5.29	2142
1982	286	5.19	1484
<b>1983</b>	<b>143</b>	<b>6.04</b>	<b>864</b>

### Utilized Production

County	Total Trees <sup>1/</sup> 1978	Utilized Production <sup>2/</sup>					
		1978	1979	1980	1981	1982	1983
	Number	1,000 Pounds					
BERNALILLO, VALENCIA	6600	501	500	500	800	800	<b>400</b>
CHAVES, DONA ANA, OTERO	30150	3894	2800	2100	3400	1500	<b>750</b>
GRANT, SIERRA, DE BACA	17200	2525	2000	2000	2750	2500	<b>1200</b>
LINCOLN	24900	1680	1000	2000	2000	300	<b>100</b>
RIO ARRIBA	44300	3780	3500	2700	2700	3200	<b>1700</b>
SAN JUAN	12800	2100	1800	400	1850	900	<b>550</b>
SANDOVAL	15200	2100	2000	1900	2900	2200	<b>1000</b>
SANTA FE	4850	420	400	400	600	600	<b>300</b>
STATE	156000	17000	14000	12000	17000	12000	<b>6000</b>

<sup>1/</sup> Orchards of 100 or more trees.

<sup>2/</sup> One bushel equals 42 pounds.

# Pecans

## Production, Price and Value



Photo by Eugene Burton

Crop Year	Production	Price Per Pound	Value of Production
	1000 Pounds	Cents	1000 Dollars
1974	13200	51.0	6732
1975	13100	57.0	7467
1976	11500	100.0	11500
1977	15000	81.0	12150
1978	15000	75.0	11250
1979	14700	69.0	10143
1980	14700	88.0	12936
1981	20000	86.0	17200
1982	25000	83.0	20750
<b>1983</b>	<b>29000</b>	<b>73.0</b>	<b>21170</b>

Cold temperatures through late spring kept pecan trees across the State dormant longer than usual. Some freeze damage was reported primarily from the eastern part of the State. Mild fall weather, however, allowed the somewhat late crop to fully develop, yielding record crops in some localities. Gradual maturation of recent plantings coupled with good crops from mature orchards made the 1983 crop the largest ever in New Mexico.

Prices received by New Mexico pecan growers were fully 10 cents per pound below those received for the 1982 crop. As a result, the value of the crop was up just 2 percent from 1982.

## Orchards, Acres, Trees and Production

County	1980 Survey			Utilized Production					
	Orchards	Acres	Trees	1978	1979	1980	1981	1982	1983
	Number			1,000 Pounds					
CHAVES, EDDY	91	2161	146530	1900	85	2090	2000	1985	<b>2200</b>
DONA ANA	260	13645	718000	12600	14165	12040	16850	21720	<b>25450</b>
LUNA, SIERRA	35	893	45490	350	315	400	900	995	<b>1000</b>
OTERO	44	961	42000	---	---	135	210	260	<b>270</b>
OTHER COUNTIES	77	1681	79980	150	135	35	40	40	<b>80</b>
STATE	507	19341	1032000	15000	14700	14700	20000	25000	<b>29000</b>

## Fall Crop: Acreage, Production and Value

Crop Year	Acreage		Yield Per	Production	Price	Value
	Planted	Harvested	Harvested		Per	of
	Acres	Acres	Acres	1000 Cwt.	Cwt.	Production
1974	3400	3200	220	704	10.60	7462
1975	3600	3500	215	753	8.55	6438
1976	3600	3200	260	832	14.20	11814
1977	4500	3000	200	600	8.85	5310
1978	4700	3700	190	703	7.96	5596
1979	3300	3200	200	640	9.11	5830
1980	3200	2800	185	518	9.90	5128
1981	3500	2800	210	588	9.99	5874
1982	3500	3300	230	759	9.93	7537
<b>1983</b>	<b>3200</b>	<b>3000</b>	<b>205</b>	<b>615</b>	<b>16.60</b>	<b>10209</b>

## Spring Crop: Acreage, Yield and Production by County

County	Acreage				Yield Per		Production	
	Planted		Harvested		Harvested			
	1982	1983	1982	1983	1982	1983	1982	1983
DONA ANA	1440	2530	1440	2235	335	310	483000	692800
LUNA, SIERRA	60	70	60	65	335	310	20000	20200
STATE	1500	2600	1500	2300	335	310	503000	713000

1/ Rounded to the nearest five cwt.

## Fall Crop: Acreage, Yield and Production by County

County	Acreage				Yield Per		Production	
	Planted		Harvested		Harvested			
	1982	1983	1982	1983	1982	1983	1982	1983
DONA ANA	3280	3040	3080	2860	230	205	708400	586000
LUNA, SIERRA	220	160	220	140	230	205	50600	29000
STATE	3500	3200	3300	3000	230	205	759000	615000

1/ Rounded to the nearest five cwt.

# Onions

Onion production in 1983 is estimated at 1.2 million cwt., down 24 percent from last year's record production of 1.6 million cwt. The total value of production is estimated at 11.1 million dollars, 22 percent below 1982. The major commercial onion varieties grown in New Mexico include Grano, Granex, Sweet Spanish and Mid-Summer Hybrids. Onions grown in New Mexico are primarily shipped for fresh market. Harvest normally begins in late May and continues through September. This is one of the longest non-storage shipping seasons in the country. When the New Mexico harvest is at its peak it can supply, as much as 30 percent of the Nations market.

## Monthly Prices Received

Year	Dollars Per 100 Pounds				
	May	June	July	Aug.	Sept.
1974	---	5.90	6.70	8.00	5.40
1975	---	15.00	18.40	15.00	13.80
1976	---	5.30	5.90	5.70	4.95
1977	---	9.50	7.70	6.70	6.20
1978	---	7.40	9.50	9.90	7.30
1979	---	13.20	12.80	7.20	---
1980	---	9.00	9.00	9.80	---
1981	16.70	15.10	17.90	15.90	---
1982	---	7.57	9.12	10.20	7.60
<b>1983</b>	---	<b>7.70</b>	<b>9.30</b>	<b>9.50</b>	<b>8.50</b>

## Acreage, Production and Value

Crop Year	Acreage		Yield Per	Production	Price	Value
	Planted	Harvested	Harvested		Per	of
	Acres	Acres	Acres	1000	Cwt.	Production
			Cwt.	Cwt.	Dollars	Dollars
1974	3400	3300	340	1122	6.54	7338
1975	3000	3000	335	1005	15.70	15779
1976	4200	4000	335	1340	5.60	7504
1977	3500	3200	325	1040	7.70	8008
1978	4300	3700	320	1184	8.54	10111
1979	3500	3200	300	960	11.10	10656
1980	4000	3900	290	1131	9.20	10405
1981	3600	3600	345	1242	16.20	20120
1982	4600	4500	365	1643	8.69	14278
<b>1983</b>	<b>4400</b>	<b>3900</b>	<b>320</b>	<b>1248</b>	<b>8.90</b>	<b>11107</b>

## Onion Acreage, Yield and Production by County

County	Acreage				Yield Per Harvested Acre <sup>1/</sup>		Production	
	Planted		Harvested					
	-----Acres-----				-----Cwt.-----			
	1982	1983	1982	1983	1982	1983	1982	1983
DONA ANA	3830	<b>3890</b>	3770	<b>3440</b>	375	<b>325</b>	1413700	<b>1118000</b>
LUNA	200	<b>240</b>	190	<b>220</b>	300	<b>285</b>	57000	<b>62700</b>
SIERRA	100	<b>80</b>	100	70	375	<b>285</b>	37500	<b>19900</b>
OTHER COUNTIES	470	<b>190</b>	440	<b>170</b>	305	<b>280</b>	134800	<b>47400</b>
STATE	4600	<b>4400</b>	4500	<b>3900</b>	365	<b>320</b>	1643000	<b>1248000</b>

<sup>1/</sup> Rounded to the nearest five cwt.

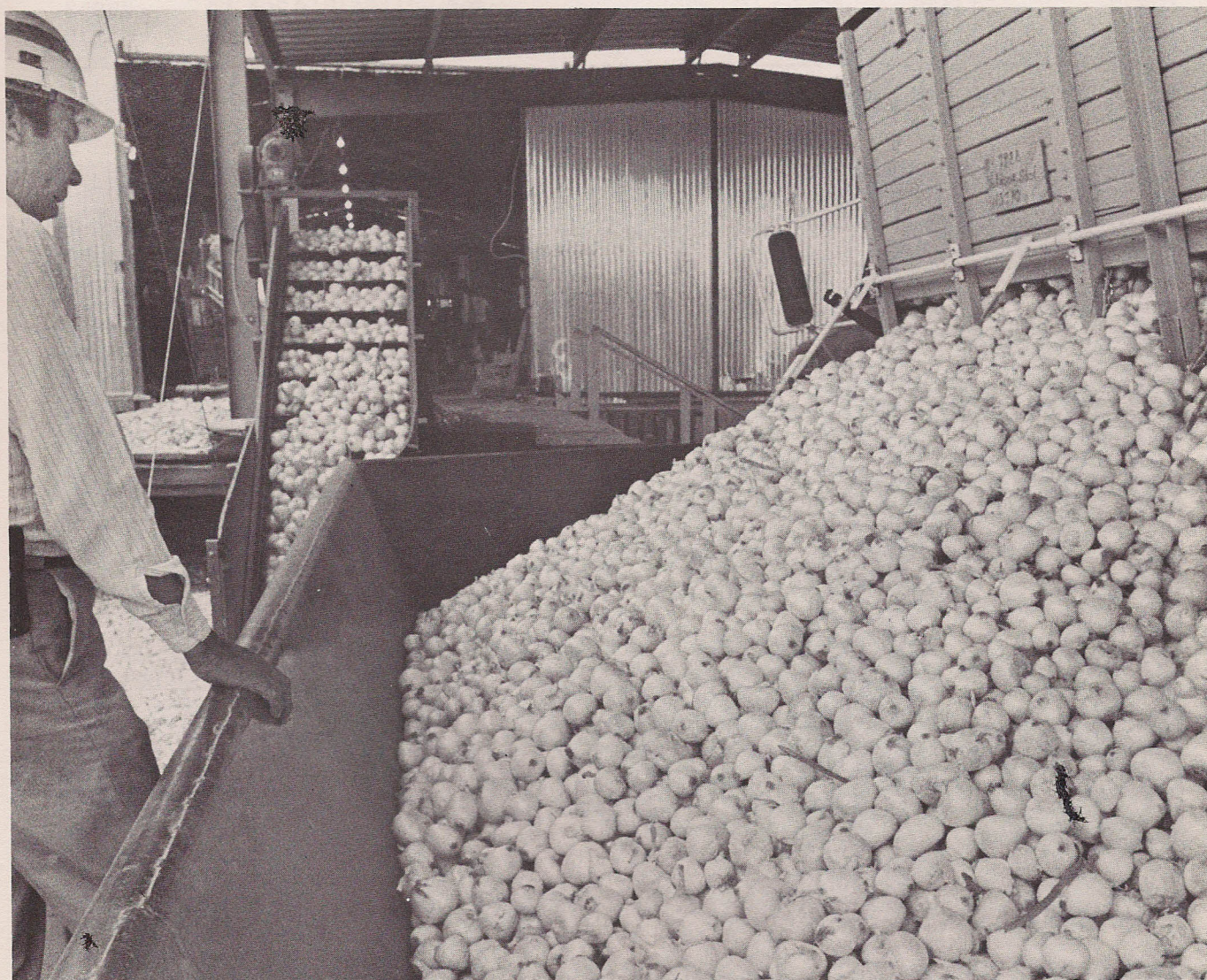


Photo by Eugene Burton

## Chile

## Acreage, Yield, Production and Value

Year	Acreage Harvested	Yield Per Acre Dry Weight	Total Production Dry Weight Equivalent <sup>1/</sup>	Average Price Per Ton	Total Value (000)
	<u>Acres</u>	<u>Tons</u>	<u>Tons</u>	<u>Dollars</u>	<u>Dollars</u>
1974	9400	1.32	12380		
1975	9200	1.30	11974	N/A	N/A
1976	10400	1.34	13960		
1977	10900	1.52	16600	853.00	14160
1978	11200	1.54	17200	925.00	15910
1979	15100	1.20	18100	1010.00	18281
1980	17200	1.36	23400	1125.00	26325
1981	15300	1.60	24500	1340.00	32830
1982	14600	1.70	24800	1204.00	29858
<b>1983</b>	<b>17200</b>	<b>1.60</b>	<b>27500</b>	<b>1210.00</b>	<b>33275</b>

<sup>1/</sup> A 5:1 ratio was used to convert green tonnage to a dry weight equivalent.



Photo by Eugene Burton

## Tons Processed, Price and Value

Year	New Mexico Mild and Other Mild		New Mexico Hot and Misc. Varieties		Processed Chile <sup>1/</sup>				Total Value (000)
	Green Tons Processed	Red Tons Processed	Green Tons Processed	Red Tons Processed	Total Processed		Average Price Per Ton <sup>2/</sup>		
					Green	Red	Green	Red	
	-----Tons-----				-----Dollars-----				
1974		4150		800		4950		687.00	3399
1975		3800		650		4450		714.00	3176
1976	N/A	7150	N/A	1000	N/A	8150	N/A	788.00	6422
1977		10140		880		11020		731.00	8055
1978		9050		660		9710		740.00	7185
1979	19220	8580	1280	440	20500	9020	177.00	789.00	10745
1980	27000	12200	3400	900	30400	13100	228.00	842.00	17961
1981	23000	11900	7730	1500	30300	13400	237.00	1083.00	21693
1982	28000	9900	5200	2300	33200	12200	229.00	896.00	18534
<b>1983</b>	<b>27200</b>	<b>9500</b>	<b>7000</b>	<b>2800</b>	<b>34200</b>	<b>12300</b>	<b>230.00</b>	<b>850.00</b>	<b>18321</b>

<sup>1/</sup> Estimates based on processor reports; includes chile processed out of state. 1974-1978 peppers for drying only; 1979-1983 includes total processed chile.

<sup>2/</sup> Average price received by growers.

## Planted Acres for All Purposes by County

County	1977	1978	1979	1980	1981	1982	1983
	-----Acres-----						
BERNALILLO	50	200	400	450	500	550	<b>650</b>
CHAVES	660	700	900	1200	1200	700	<b>700</b>
DONA ANA	6270	6420	9500	10700	7700	7700	<b>8200</b>
EDDY	50	100	375	790	800	800	<b>1600</b>
GUADALUPE	100	100	100	100	50	50	<b>50</b>
LUNA	530	600	500	1390	920	1300	<b>2100</b>
RIO ARRIBA	300	300	300	350	260	200	<b>250</b>
SANDOVAL	300	300	200	300	300	400	<b>500</b>
SIERRA	1900	1800	2100	1000	2500	2200	<b>2380</b>
SOCORRO	150	160	180	250	300	300	<b>300</b>
VALENCIA	300	200	250	300	300	200	<b>150</b>
OTHER COUNTIES	290	320	295	370	470	200	<b>320</b>
STATE	10900	11200	15100	17200	15300	14600	<b>17200</b>



## Grapes

New Mexico grape acreage has been rapidly increasing during the past few years. Total grape acreage in 1983 is estimated at 1,450 acres, 169 percent greater than in 1982 and nearly eight times the 1981 acreage.

Production at commercial vineyards during 1983 is estimated at 190 tons. This production is broken down by year of planting in the table to the right. Approximately 175 tons of this production was used to make commercial wine and an estimated 15 tons were used on the farms where produced.

### Acres, Vines and Production

Year	Acres	Vines	Production (Tons)
Before			
1981	85	40,000	160
1981	80	30,000	30
1982	375	225,000	0
<b>1983</b>	<b>910</b>	<b>480,000</b>	<b>0</b>
<b>TOTAL</b>	<b>1,450</b>	<b>775,000</b>	<b>190</b>

