



NORTHEAST CROP PRODUCTION REPORT

NATIONAL AGRICULTURAL STATISTICS SERVICE

United States Department of Agriculture • Washington, D.C. 20250
 Northeastern Regional Field Office • Harrisburg, PA 17112
 4050 Crums Mill Rd, Suite 203 • www.nass.usda.gov



Posted online January 14, 2015

Regional Contacts

Phone: 717-787-3904 Email: nassrfoner@nass.usda.gov

- Pennsylvania – King Whetstone, NE Regional Director
- Delaware – Dale Hawks, Acting State Statistician
- Maryland – Dale Hawks, State Statistician
- New England – Gary Keough, State Statistician
- New Jersey – Bruce Eklund, State Statistician
- New York – Blair Smith, State Statistician

Northeast Crop Production 2014 Summary:

- Corn
- Barley
- Hay & New Alfalfa Seedings
- Tobacco
- Sweet Potatoes
- Oats
- Wheat
- Soybeans
- Potatoes
- Dry Edible Beans

Corn Area Planted for All Purposes and Harvested for Grain, Yield, and Production – Northeastern Regional States and United States: 2012-2014

State	Area planted for all purposes			Area harvested for grain		
	2012	2013	2014	2012	2013	2014
	(1,000 acres)	(1,000 acres)	(1,000 acres)	(1,000 acres)	(1,000 acres)	(1,000 acres)
Connecticut ¹	27	27	26	(NA)	(NA)	(NA)
Delaware	185	180	175	178	174	168
Maine ¹	30	31	31	(NA)	(NA)	(NA)
Maryland	495	480	500	435	420	430
Massachusetts	16	16	16	(NA)	(NA)	(NA)
New Hampshire ¹	14	14	15	(NA)	(NA)	(NA)
New Jersey	95	90	85	86	80	79
New York	1,170	1,200	1,140	680	690	680
Pennsylvania	1,460	1,480	1,460	1,000	1,090	1,030
Rhode Island ¹	2	2	2	(NA)	(NA)	(NA)
Vermont ¹	91	92	92	(NA)	(NA)	(NA)
United States	97,291	95,365	90,597	87,365	87,451	83,136

(NA) Not available. ¹ Area harvested for grain not estimated.

Corn Area Planted for All Purposes and Harvested for Grain, Yield, and Production – Northeastern Regional States and United States: 2012-2014 (continued)

State	Yield per acre			Production		
	2012	2013	2014	2012	2013	2014
	(bushels)	(bushels)	(bushels)	(1,000 bushels)	(1,000 bushels)	(1,000 bushels)
Connecticut ¹	(NA)	(NA)	(NA)	(NA)	(NA)	(NA)
Delaware	135.0	166.0	200.0	24,030	28,884	33,600
Maine ¹	(NA)	(NA)	(NA)	(NA)	(NA)	(NA)
Maryland	122.0	158.0	175.0	53,070	66,360	75,250
Massachusetts ¹	(NA)	(NA)	(NA)	(NA)	(NA)	(NA)
New Hampshire ¹	(NA)	(NA)	(NA)	(NA)	(NA)	(NA)
New Jersey	118.0	139.0	157.0	10,148	11,120	12,403
New York	134.0	137.0	148.0	91,120	94,530	100,640
Pennsylvania	131.0	146.0	154.0	131,000	159,140	158,620
Rhode Island ¹	(NA)	(NA)	(NA)	(NA)	(NA)	(NA)
Vermont ¹	(NA)	(NA)	(NA)	(NA)	(NA)	(NA)
United States	123.1	158.1	171.0	10,755,111	13,828,964	14,215,532

(NA) Not available. ¹ Area harvested for grain not estimated.

Corn for Silage Area Harvested, Yield, and Production – Northeastern Regional States and United States: 2012-2014

State	Area harvested			Yield per acre			Production		
	2012	2013	2014	2012	2013	2014	2012	2013	2014
	(1,000 acres)	(1,000 acres)	(1,000 acres)	(tons)	(tons)	(tons)	(1,000 tons)	(1,000 tons)	(1,000 tons)
Connecticut	22	23	22	20.0	19.0	20.0	440	437	440
Delaware	5	5	5	17.0	17.0	24.0	85	85	120
Maine	25	27	27	16.0	17.5	18.5	400	473	500
Maryland	50	55	60	18.0	21.0	22.0	900	1,155	1,320
Massachusetts	13	13	13	19.0	18.0	20.0	247	234	260
New Hampshire	13	13	14	20.0	20.0	21.0	260	260	294
New Jersey	8	9	5	15.0	20.0	20.0	120	180	100
New York	475	500	450	17.0	17.0	18.0	8,075	8,500	8,100
Pennsylvania	430	380	410	18.0	20.5	20.0	7,740	7,790	8,200
Rhode Island	2	2	2	20.0	20.5	20.0	40	41	40
Vermont	81	85	85	19.0	15.0	18.0	1,539	1,275	1,530
United States	7,419	6,281	6,371	15.7	18.8	20.1	116,148	118,296	128,048

Oat Area Planted and Harvested, Yield, and Production – Northeastern Regional States and United States: 2012-2014

State	Area planted ¹			Area harvested		
	2012	2013	2014	2012	2013	2014
	(1,000 acres)	(1,000 acres)	(1,000 acres)	(1,000 acres)	(1,000 acres)	(1,000 acres)
Maine	29	28	32	28	26	31
New York	70	75	55	50	46	40
Pennsylvania	100	95	90	65	50	60
United States	2,700	2,980	2,723	1,005	1,009	1,029

¹ Includes area planted in preceding fall.

Oat Area Planted and Harvested, Yield, and Production – Northeastern Regional States and United States: 2012-2014 (continued)

State	Yield per acre			Production		
	2012	2013	2014	2012	2013	2014
	(bushels)	(bushels)	(bushels)	(1,000 bushels)	(1,000 bushels)	(1,000 bushels)
Maine	65.0	67.0	70.0	1,820	1,742	2,170
New York	65.0	67.0	63.0	3,250	3,082	2,520
Pennsylvania	61.0	62.0	58.0	3,965	3,100	3,480
United States	61.2	64.1	67.7	61,486	64,642	69,684

Barley Area Planted and Harvested, Yield, and Production – Northeastern Regional States and United States: 2012-2014

State	Area planted ¹			Area harvested		
	2012	2013	2014	2012	2013	2014
	(1,000 acres)	(1,000 acres)	(1,000 acres)	(1,000 acres)	(1,000 acres)	(1,000 acres)
Delaware	38	43	41	34	33	31
Maine	17	20	13	16	17	12
Maryland	60	75	70	40	52	45
New York	10	11	12	8	8	8
Pennsylvania	65	75	70	53	60	50
United States	3,660	3,528	2,975	3,274	3,040	2,443

¹ Includes area planted in preceding fall.

Barley Area Planted and Harvested, Yield, and Production – Northeastern Regional States and United States: 2012-2014 (continued)

State	Yield per acre			Production		
	2012	2013	2014	2012	2013	2014
	(bushels)	(bushels)	(bushels)	(1,000 bushels)	(1,000 bushels)	(1,000 bushels)
Delaware	84.0	78.0	86.0	2,856	2,574	2,666
Maine	60.0	53.0	68.0	960	901	816
Maryland	82.0	85.0	77.0	3,280	4,420	3,465
New York	46.0	52.0	47.0	368	416	376
Pennsylvania	68.0	68.0	71.0	3,604	4,080	3,550
United States	66.9	71.3	72.4	218,990	216,745	176,794

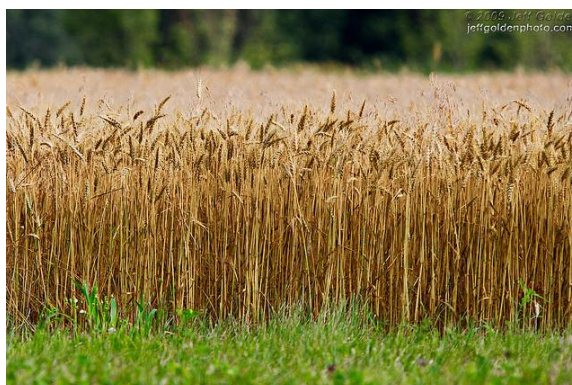
All Wheat Area Planted and Harvested, Yield, and Production – Northeastern Regional States and United States: 2012-2014

State	Area planted ¹			Area harvested		
	2012	2013	2014	2012	2013	2014
	(1,000 acres)	(1,000 acres)	(1,000 acres)	(1,000 acres)	(1,000 acres)	(1,000 acres)
Delaware	80	85	80	76	78	75
Maryland	310	345	340	210	260	250
New Jersey	27	34	33	23	29	25
New York	100	125	120	85	115	95
Pennsylvania	155	185	185	135	155	150
United States	55,294	56,236	56,822	48,758	45,332	46,381

¹ Includes area planted in preceding fall.

All Wheat Area Planted and Harvested, Yield, and Production – Northeastern Regional States and United States: 2012-2014 (continued)

State	Yield per acre			Production		
	2012	2013	2014	2012	2013	2014
	(bushels)	(bushels)	(bushels)	(1,000 bushels)	(1,000 bushels)	(1,000 bushels)
Delaware	74.0	64.0	72.0	5,624	4,992	5,400
Maryland	68.0	67.0	70.0	14,280	17,420	17,500
New Jersey	56.0	54.0	53.0	1,288	1,566	1,325
New York	63.0	68.0	63.0	5,355	7,820	5,985
Pennsylvania	65.0	68.0	65.0	8,775	10,540	9,750
United States	46.2	47.1	43.7	2,252,307	2,134,979	2,025,651



All Hay Area Harvested, Yield, and Production – States and United States: 2012-2014

State	Area harvested			Yield per acre		
	2012	2013	2014	2012	2013	2014
	(1,000 acres)	(1,000 acres)	(1,000 acres)	(tons)	(tons)	(tons)
Connecticut	56	47	53	1.98	2.26	1.92
Delaware	16	18	13	2.63	3.28	2.62
Maine	130	135	150	1.78	1.46	1.55
Maryland	175	225	195	2.42	2.33	2.65
Massachusetts	69	84	75	1.96	2.12	1.72
New Hampshire	52	50	54	1.90	2.50	1.74
New Jersey	103	97	106	2.20	2.42	2.46
New York	1,340	1,430	1,370	1.87	2.05	1.97
Pennsylvania	1,420	1,260	1,400	2.24	2.32	2.28
Rhode Island	8	8	7	1.88	1.88	1.71
Vermont	180	180	185	2.02	1.72	1.68
United States	54,653	57,897	57,092	2.14	2.33	2.45

All Hay Area Harvested, Yield, and Production – Northeastern Regional States and United States: 2012-2014 (continued)

State	Production		
	2012	2013	2014
	(1,000 tons)	(1,000 tons)	(1,000 tons)
Connecticut	111	106	102
Delaware	42	59	34
Maine	231	197	233
Maryland	424	524	517
Massachusetts	135	178	129
New Hampshire	99	125	94
New Jersey	227	235	261
New York	2,506	2,930	2,698
Pennsylvania	3,182	2,918	3,185
Rhode Island	15	15	12
Vermont	363	310	311
United States	117,072	135,002	139,798

Alfalfa and Alfalfa Mixtures for Hay Area Harvested, Yield, and Production – Northeastern Regional States and United States: 2012-2014

State	Area harvested			Yield per acre		
	2012	2013	2014	2012	2013	2014
	(1,000 acres)	(1,000 acres)	(1,000 acres)	(tons)	(tons)	(tons)
Connecticut	5	7	8	2.80	2.00	2.00
Delaware	6	6	4	2.70	3.50	2.70
Maine	0	10	10	1.50	2.20	2.30
Maryland	30	30	35	3.50	3.80	3.80
Massachusetts	9	9	10	2.30	3.10	1.80
New Hampshire	5	5	4	2.00	1.60	2.30
New Jersey	15	17	14	3.40	3.00	3.50
New York	380	350	290	2.30	2.20	2.60
Pennsylvania	400	340	350	2.60	2.90	2.80
Rhode Island	1	1	1	1.50	2.00	2.50
Vermont	30	35	35	2.10	1.80	1.60
United States	16,795	17,673	18,445	3.01	3.24	3.33

Alfalfa and Alfalfa Mixtures for Hay Area Harvested, Yield, and Production – Northeastern Regional States and United States: 2012-2014 (continued)

State	Production		
	2012	2013	2014
	(1,000 tons)	(1,000 tons)	(1,000 tons)
Connecticut	14	14	16
Delaware	16	21	11
Maine	15	22	23
Maryland	105	114	133
Massachusetts	21	28	18
New Hampshire	10	8	9
New Jersey	51	51	49
New York	874	770	754
Pennsylvania	1,040	986	980
Rhode Island	2	2	3
Vermont	63	63	56
United States	50,600	57,217	61,446

All Other Hay Area Harvested, Yield, and Production – Northeastern Regional States and United States: 2012-2014

State	Area harvested			Yield per acre		
	2012	2013	2014	2012	2013	2014
	(1,000 acres)	(1,000 acres)	(1,000 acres)	(tons)	(tons)	(tons)
Connecticut	51	40	45	1.90	2.30	1.90
Delaware	10	12	9	2.60	3.20	2.50
Maine	120	125	140	1.80	1.40	1.50
Maryland	145	195	160	2.20	2.10	2.40
Massachusetts	60	75	65	1.90	2.00	1.70
New Hampshire	47	45	50	1.90	2.60	1.70
New Jersey	88	80	92	2.00	2.30	2.30
New York	960	1,080	1,080	1.70	2.00	1.80
Pennsylvania	1,020	920	1,050	2.10	2.10	2.10
Rhode Island	7	7	6	1.90	1.90	1.50
Vermont	150	145	150	2.00	1.70	1.70
United States	37,858	40,224	38,647	1.76	1.93	2.03

All Other Hay Area Harvested, Yield, and Production – Northeastern Regional States and United States: 2012-2014 (continued)

State	Production		
	2012	2013	2014
	(1,000 tons)	(1,000 tons)	(1,000 tons)
Connecticut	97	92	86
Delaware	26	38	23
Maine	216	175	210
Maryland	319	410	384
Massachusetts	114	150	111
New Hampshire	89	117	85
New Jersey	176	184	212
New York	1,632	2,160	1,944
Pennsylvania	2,142	1,932	2,205
Rhode Island	13	13	9
Vermont	300	247	255
United States	66,472	77,785	78,352

¹ Alfalfa and alfalfa mixtures included in all other hay.

New Seedings of Alfalfa and Alfalfa Mixtures – Northeastern Regional States and United States: 2012-2014

State	Area seeded		
	2012	2013	2014
	(1,000 acres)	(1,000 acres)	(1,000 acres)
Connecticut	1	1	1
Delaware	2	1	1
Maine	2	2	2
Maryland	5	4	9
Massachusetts	1	1	1
New Hampshire	1	1	1
New Jersey	3	2	1
New York	110	80	70
Pennsylvania	90	80	85
Vermont	6	12	6
United States	2,389	2,517	2,547

Soybeans for Beans Area Planted and Harvested, Yield, and Production – Northeastern Regional States and United States: 2012-2014

State	Area planted			Area harvested		
	2012	2013	2014	2012	2013	2014
	(1,000 acres)	(1,000 acres)	(1,000 acres)	(1,000 acres)	(1,000 acres)	(1,000 acres)
Delaware	170	165	185	168	163	183
Maryland	480	485	510	475	480	505
New Jersey	96	90	105	94	88	103
New York	315	280	330	312	278	327
Pennsylvania	530	560	610	520	555	605
United States	77,198	76,840	83,701	76,144	76,253	83,061

Soybeans for Beans Area Planted and Harvested, Yield, and Production – Northeastern Regional States and United States: 2012-2014 (continued)

State	Yield per acre			Production		
	2012	2013	2014	2012	2013	2014
	(bushels)	(bushels)	(bushels)	(1,000 bushels)	(1,000 bushels)	(1,000 bushels)
Delaware	42.5	40.5	48.0	7,140	6,602	8,784
Maryland	47.0	39.5	46.0	22,325	18,960	23,230
New Jersey	39.0	39.5	44.0	3,666	3,476	4,532
New York	46.0	48.0	45.0	14,352	13,344	14,715
Pennsylvania	48.0	49.0	49.0	24,960	27,195	29,645
United States	40.0	44.0	47.8	3,042,044	3,357,984	3,968,823

Tobacco Area Harvested, Yield, and Production – Northeastern Regional States and United States: 2012-2014

State	Area harvested			Yield per acre		
	2012	2013	2014	2012	2013	2014
	(acres)	(acres)	(acres)	(pounds)	(pounds)	(pounds)
Connecticut	(D)	(D)	(D)	(D)	(D)	(D)
Massachusetts	(D)	(D)	(D)	(D)	(D)	(D)
Pennsylvania	9,600	8,900	9,100	2,394	2,389	2,445
United States	336,245	355,675	378,360	2,268	2,034	2,316
State	Production					
	2012	2013	2014			
	(1,000 pounds)	(1,000 pounds)	(1,000 pounds)			
Connecticut	(D)	(D)	(D)			
Massachusetts	(D)	(D)	(D)			
Pennsylvania	22,985	21,260	22,250			
United States	762,709	723,579	876,415			

(D) Withheld to avoid disclosing data for individual operations.

Potato Area Planted and Harvested, Yield, and Production – Northeastern Regional States and United States: 2012-2014

State	Area planted			Area harvested		
	2012	2013	2014	2012	2013	2014
	(1,000 acres)	(1,000 acres)	(1,000 acres)	(1,000 acres)	(1,000 acres)	(1,000 acres)
Delaware	1.4	1.4	1.2	1.4	1.4	1.2
Maine	59.0	55.0	51.0	58.5	54.0	50.5
Maryland	2.3	2.2	2.3	2.3	2.1	2.3
Massachusetts	3.9	3.9	3.9	3.9	3.9	3.9
New Jersey	2.3	2.4	2.0	2.3	2.4	1.9
New York	18.5	17.5	16.0	18.0	17.1	15.8
Pennsylvania	8.9	6.7	5.3	8.6	6.6	5.2
Rhode Island	0.6	0.5	0.5	0.6	0.5	0.5
United States	1,154.8	1,063.9	1,061.1	1,138.5	1,050.9	1,049.5

Potato Area Planted and Harvested, Yield, and Production – Northeastern Regional States and United States: 2012-2014 (continued)

State	Yield per acre ¹			Production		
	2012	2013	2014	2012	2013	2014
	(cwt)	(cwt)	(cwt)	(1,000 cwt)	(1,000 cwt)	(1,000 cwt)
Delaware	255	280	290	357	392	348
Maine	275	290	300	16,088	15,660	15,150
Maryland	380	310	380	874	651	874
Massachusetts	330	260	320	1,287	1,014	1,248
New Jersey	280	230	225	644	552	428
New York	285	290	280	5,130	4,959	4,424
Pennsylvania	260	290	270	2,236	1,914	1,404
Rhode Island	250	260	246	150	130	123
United States	408	414	426	464,970	434,652	446,693

¹ Derived.

Sweet Potato Area Planted and Harvested, Yield, and Production – Northeastern Regional States and United States: 2012-2014

State	Area planted			Area harvested		
	2012	2013	2014	2012	2013	2014
	(1,000 acres)	(1,000 acres)	(1,000 acres)	(1,000 acres)	(1,000 acres)	(1,000 acres)
New Jersey	1.3	1.2	1.2	1.3	1.2	1.2
United States	130.5	115.7	137.3	126.6	113.2	135.2

State	Yield per acre			Production		
	2012	2013	2014	2012	2013	2014
	(cwt)	(cwt)	(cwt)	(1,000 cwt)	(1,000 cwt)	(1,000 cwt)
New Jersey	160	125	160	208	150	192
United States	209	219	219	26,482	24,785	29,584

Dry Edible Bean Area Planted and Harvested, Yield, and Production – Northeastern Regional States and United States: 2012-2014

State	Area planted			Area harvested		
	2012	2013	2014	2012	2013	2014
	(1,000 acres)	(1,000 acres)	(1,000 acres)	(1,000 acres)	(1,000 acres)	(1,000 acres)
New York	10.0	9.0	8.0	9.5	8.8	7.7
United States	1,742.5	1,359.7	1,718.9	1,690.4	1,316.3	1,665.7

State	Yield per acre ¹			Production ¹		
	2012	2013	2014	2012	2013	2014
	(pounds)	(pounds)	(pounds)	(1,000 cwt)	(1,000 cwt)	(1,000 cwt)
New York	1,920	1,820	1,490	182	160	115
United States	1,889	1,867	1,753	31,925	24,576	29,206

¹ Clean basis.



USDA 2015 Agricultural Outlook Forum

Smart Agriculture in the 21st Century

Crystal Gateway Marriott Hotel

Arlington, VA

Feb. 19-20, 2015

SAVE the Date!

The USDA Outlook Forum, first held in 1923, brings together renowned speakers including farmers, ranchers, economists, academics, statisticians, consultants, industry leaders, and government policymakers. The Secretary of Agriculture will present the keynote address, followed by a distinguished guest speaker. The economic outlook for the coming year will be presented by the USDA Chief Economist. In addition, a panel of industry leaders will discuss an important topic relevant to agriculture.

- **February 19** includes a general morning session, a networking luncheon, five concurrent afternoon sessions, and a dinner speaker.
- **February 20** includes a day of 5 concurrent sessions and luncheon speakers.

Session Topics are expected to include:

- Perspectives on Global & U.S. Trade
- Tomorrow's Opportunities
- Big Data
- Commodity Situation and Outlook
- Food Price & Farm Income Outlook
- Conservation & Regulation
- Water Issues
- Weather, Drought & Big Data
- Climate Change
- Moving Feed, Food & Fuel to Market
- 100-Year Anniversary of USDA Market News
- Nutrition & New Opportunities for Producers
- Regional Approaches to Rural Growth
- Bio-Economy
- Antimicrobial Resistance
- Agriculture & Bees
- Local Foods
- Food Waste

Register in November at: www.usda.gov/oce/forum