



Section 1:

General



Statistics Program
NC's Rank in U.S. Agriculture
Farm Real Estate Values
Farm Numbers
Weather & Climate
Soil Moisture



STATISTICAL REPORTS PROGRAM

The USDA's National Agricultural Statistics Service compiles current and historic statistics concerning agriculture in North Carolina. Information most often requested by farmers, the general public, and workers in government agencies are included. Reporting of crop and livestock statistics is a service provided to farmers and others in the State by NASS in cooperation with the North Carolina Department of Agriculture and Consumer Services.

The collection and dissemination of agricultural statistics started in 1863. This is one of the oldest activities of the United States Department of Agriculture. It was recognized that there were advantages of a joint relationship between the State and Federal Governments in the development of agricultural statistics. In 1919, the N.C. Department of Agriculture entered into a cooperative agreement with the U.S. Department of Agriculture to provide detailed agricultural statistics. The agreement resulted in the creation of the Agricultural Statistics Division of the North Carolina Department of Agriculture and Consumer Services.

NASS publishes official statistics on North Carolina crops, livestock, prices, and various other agricultural items. The most requested reports and the approximate dates of releases are shown in the table below. These reports and more are free and available online at www.nass.usda.gov/Publications or by writing to: State Statistician, Agricultural Statistics, PO Box 27767, Raleigh, NC 27611.

This year, NASS will also collect information for the Census of Agriculture, a complete count of U.S. farms and ranches and the people who operate them. Conducted every five years, the Census of Agriculture provides the only source of uniform, comprehensive, and impartial agriculture data for every county in the nation. Census questionnaires will be sent to every known producer in the country in November 2022. Deadline for response is February 2023, and the data will be released spring/summer 2024.

Current and historical data series can be found at <http://quickstats.nass.usda.gov>.

For additional information regarding North Carolina agricultural statistics please email dee.webb@usda.gov.

TYPE OF REPORT	FREQUENCY OF REPORT	APPROX. DATE AVAILABLE
CROP REPORTS		
Annual Crop Production	Annually	Second Week in January
Annual Vegetable Production	Annually	Second Week in February
Prospective Plantings	Annually	Last Week in March
Acreage Report	Annually	Last Week in June
Annual Fruit & Nut Production	Annually	First Week in May
Small Grains Summary	Annually	Last Week in September
Field Crop Production	Monthly (In Season)	Second Week of Each Month
Grain Stocks	Quarterly	Second Week in January, Last Week in March, June & September
WEATHER-CROPS REPORTS	Weekly (Monthly: Jan. - Mar.)	Monday, 4:30 pm
LIVESTOCK REPORTS		
Hog and Pig Inventory and Pig Crop	Quarterly	Last Week in March, June, September & December
Cattle Cow Inventory and Calf Crop	Annually	Last Week in January
Sheep & Goats	Annually	Last Week in January
Meat Animals - Farm Production, Disposition & Income	Annually	Last Week in April
Commercial Slaughter	Monthly	Third Week of Each Month
DAIRY REPORTS		
Cows Milked & Milk Production	Quarterly	Third Week in January, April, July & October
Milk Production & Disposition	Annually	Last Week in April
POULTRY REPORTS		
Broiler Report	Weekly	Wednesday, 3:00 pm
Eggs, Chicken, and Hatchery	Monthly	Third Week of Each Month
Turkeys Raised	Annually	Last Week in September
Poultry Production, Disposition, & Income	Annually	Last Week in April
ECONOMIC REPORTS		
Number of Farms & Land in Farms	Annually	Third Week in February
Prices Received By Farmers	Monthly	Last Week of Each Month
Labor, Wage Rates	Bi-Annually	Third week in May & November

NORTH CAROLINA'S RANK IN U.S. AGRICULTURE, 2021 ¹

Rank	Item	Production		N.C. % of U.S.	Top 3 States		
					1	2	3
1	Flue-cured Tobacco	252.0	(Mil Lbs)	80.4	NC	VA	GA
1	Sweet Potatoes	18,322.5	(000 Cwt)	63.5	NC	CA	MS
1	All Tobacco	252.4	(Mil Lbs)	52.8	NC	KY	VA
1	All Poultry & Egg Cash Receipts	5,762.3	(Mil \$)	16.2	NC	AR	GA
2	Turkeys	30.0	(Mil Hd)	13.9	MN	NC	AR
2	Annual Pig Crop Dec 20 - Nov 21	17.9	(Mil Hd)	13.5	IA	NC	MN
2	Trout Sold (foodsize)	3.5	(Mil Lbs)	7.7	ID	NC	PA
3	Cucumbers	1,565.5	(000 Cwt)	10.9	MI	FL	NC
3	Hogs & Pigs (12-1-21)	8.0	(Mil Hd)	10.8	IA	MN	NC
4	Broilers	971.4	(Mil Hd)	10.6	GA	AL	AR
5	Peanuts	495.9	(Mil Lbs)	7.8	GA	AL	FL
5	Watermelon	2,557.5	(000 Cwt)	7.5	FL	GA	CA
5	Bell Peppers	506.0	(000 Cwt)	5.0	CA	FL	NJ
5	Burley Tobacco	0.4	(Mil Lbs)	0.5	KY	PA	TN
6	Eggs - Value of Production	512.8	(Mil \$)	5.9	IA	AR	GA
6	Livestock, Dairy & Poultry Cash Receipts	9,234.0	(Mil \$)	5.6	TX	IA	NE
6	Upland Cotton 2	773.0	(000 Bales)	4.5	TX	GA	AR
7	Squash	437.5	(000 Cwt)	6.3	MI	CA	NY
7	Blueberries	35.7	(Mil Lbs)	5.3	WA	OR	GA
8	Chickens (12-1-21) (Excludes Broilers)	24.0	(Mil Hd)	4.6	IA	OH	IN
9	All Commodity Cash Receipts	13,283.8	(Mil \$)	3.7	CA	IA	NE
12	Pumpkin	292.3	(000 Cwt)	1.8	IL	IN	CA
16	Oats	952.0	(000 Bu)	2.4	MN	IA	ND
17	Soybeans	65.6	(Mil Bu)	1.5	IL	IA	MN
17	Barley	490.0	(000 Bu)	0.4	ID	MT	ND
18	Crop Cash Receipts	4,049.8	(Mil \$)	2.1	CA	IA	IL
18	Winter Wheat	19.3	(Mil Bu)	1.5	KS	OK	TX
19	Corn for Grain	134.8	(Mil Bu)	0.9	IA	IL	NE
27	Milk	917.0	(Mil Lbs)	0.4	CA	WI	ID
32	Hay	1,440.0	(000 Tons)	1.2	TX	MO	NE
35	Cattle on Farms (1-1-22)	785.0	(000 Hd)	0.9	TX	NE	KS

¹ Ranking commodities of published states only. ² 480-lb. net weight bales.



FARM REAL ESTATE VALUES

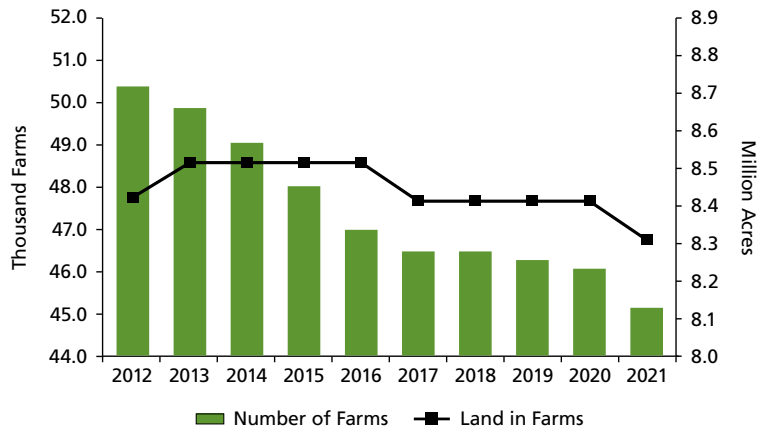
Year	Farm Real Estate Values per Acre January 1	Cropland		Pasture	
		Value per Acre	Cash Rent per Acre	Value per Acre	Cash Rent per Acre
	Dollars				
2018	4,640	4,130	87.00	4,830	28.00
2019	4,680	4,180	90.50	4,810	26.00
2020	4,670	4,180	88.50	4,780	27.50
2021	4,750	4,290	94.50	4,850	27.50
2022	5,150	4,700	100.00	5,200	26.50

NUMBER OF FARMS AND LAND IN FARMS ¹

Year	Number of Farms	Land in Farms	Average Size	Sales Class Estimates					
				\$1,000 - \$9,999	\$10,000 - \$99,999	\$100,000 +	\$1,000 - \$9,999	\$10,000 - \$99,999	\$100,000 +
	Thousands	Thousand Acres	Acres	Number			Thousand Acres		
NORTH CAROLINA									
2017	46.4	8,400	181	26,100	12,500	7,800	1,500	1,700	5,200
2018	46.4	8,400	181	26,100	12,700	7,600	1,500	1,800	5,100
2019	46.2	8,400	182	25,900	12,700	7,600	1,400	1,800	5,200
2020	46.0	8,400	183	25,700	12,700	7,600	1,400	1,800	5,200
2021	45.1	8,300	184	24,800	12,700	7,600	1,350	1,800	5,150
UNITED STATES									
2017	2,042	900,370	441	1,044,090	620,630	377,280	85,060	186,660	628,650
2018	2,029	899,500	443	1,035,690	619,030	374,480	84,370	186,770	628,360
2019	2,023	897,400	444	1,034,540	615,340	373,520	83,940	187,100	626,360
2020	2,019	896,600	444	1,032,240	613,940	372,820	83,540	186,550	626,510
2021	2,012	895,300	445	1,025,090	614,040	372,920	82,900	186,490	625,910

¹ A farm is any establishment from which \$1,000 or more of agricultural products were sold or would normally be sold during the year.

NUMBER OF FARMS AND LAND IN FARMS



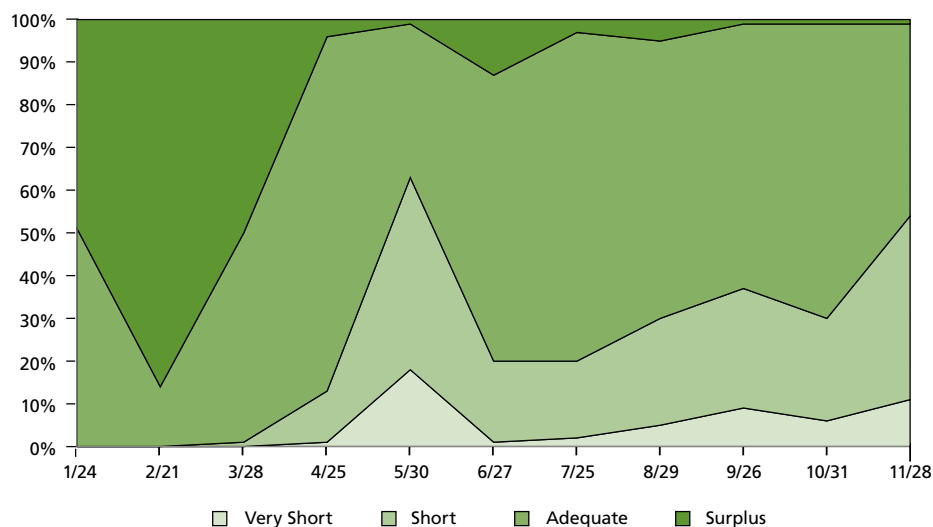
CLIMATOLOGICAL DATA, 2021

District	Average Temperatures												
	Jan	Feb	Mar	Apr	May	Jun	Jul	Aug	Sep	Oct	Nov	Dec	Average
	<i>Degrees Fahrenheit</i>												
S. Mountain	38.1	39.0	49.9	53.4	61.1	69.7	72.7	73.2	66.2	60.0	44.2	47.1	56.2
N. Mountain	34.5	35.8	45.9	50.8	58.4	66.9	70.6	71.0	63.7	58.0	41.7	44.6	53.5
N. Piedmont	39.4	40.0	51.9	58.3	65.6	74.0	77.8	78.3	70.6	64.3	47.0	49.4	59.7
C. Piedmont	39.9	40.9	52.6	58.8	65.9	74.3	77.8	78.5	71.0	64.3	47.4	50.2	60.1
S. Piedmont	41.5	42.6	54.6	60.1	67.3	75.6	78.8	79.0	71.5	65.0	48.3	51.3	61.3
S. Coastal	44.5	45.6	55.8	61.5	68.7	76.8	79.3	80.2	73.8	67.0	50.9	53.9	63.2
C. Coastal	43.7	45.1	55.7	61.5	68.3	76.4	79.3	80.5	74.1	67.5	51.9	54.0	63.2
N. Coastal	41.9	42.9	53.8	60.5	67.5	75.4	79.3	79.8	73.2	67.0	50.7	51.4	62.0

District	Precipitation												
	Jan	Feb	Mar	Apr	May	Jun	Jul	Aug	Sep	Oct	Nov	Dec	Total
	<i>Inches of Water</i>												
S. Mountain	3.99	5.20	8.31	2.93	3.72	4.09	5.38	9.11	4.17	6.54	1.10	2.09	56.63
N. Mountain	3.29	4.77	5.43	3.16	2.86	4.07	5.46	7.55	3.74	5.99	1.02	1.01	48.35
N. Piedmont	3.97	6.64	4.08	2.29	1.88	4.14	6.37	4.47	4.24	2.26	0.50	1.65	42.49
C. Piedmont	4.22	6.74	4.19	1.23	2.76	5.21	5.67	4.08	3.28	4.16	0.66	2.03	44.23
S. Piedmont	4.34	5.93	5.15	1.56	2.38	3.76	5.37	4.69	2.75	2.51	0.92	2.22	41.58
S. Coastal	5.74	7.57	2.26	1.60	2.00	7.74	6.27	7.06	5.51	2.07	0.80	2.91	51.53
C. Coastal	6.06	8.08	2.62	1.57	2.40	10.49	5.97	8.84	2.19	2.85	1.11	3.19	55.37
N. Coastal	5.48	7.88	2.70	2.52	2.63	8.65	5.18	7.68	2.51	2.90	1.42	2.14	51.69

SOURCE: National Climate Center, National Oceanic and Atmospheric Administration.

TOP-SOIL MOISTURE PERCENTS STATEWIDE, 2021



SUB-SOIL MOISTURE PERCENTS STATEWIDE, 2021



