

North Carolina Weather & Crops Report

Released: September 25, 2017



CROP SUMMARY FOR THE WEEK ENDING SEPTEMBER 24, 2017

DAYS SUITABLE FOR FIELD WORK

This Week	Last Week	Last Year	5-Year Avg.
6.6	5.6	4.3	4.9

SOIL MOISTURE PERCENT

	VS	ST	A	SS
Topsoil Moisture	3	23	71	3
Subsoil Moisture	2	16	74	8

VS= Very Short ST = Short A = Adequate SS = Surplus

CROP PROGRESS PERCENT – WITH COMPARISONS

	This Week	Last Week	Last Year	5 Yr. Avg.
PHENOLOGICAL:				
Cotton % Bolls Opening	66	55	75	73
Soybean% Dropping Leaves	37	26	42	30
HARVESTED:				
Apples	64	57	68	65
Corn for Grain	77	68	86	77
Corn Silage	87	80	97	90
Hay: Third Cutting	61	52	69	60
Sorghum	35	24	39	N/A
Sweet Potato	27	13	26	25
Tobacco: Burley	52	40	54	67
Tobacco: Flue-cured	80	73	85	82

CROP CONDITION PERCENT

	VP	P	F	G	EX
Cotton	0	3	16	58	23
Pasture	1	9	27	54	9
Peanuts	0	1	13	69	17
Sorghum	0	3	33	58	6
Soybeans	0	3	21	57	19
Sweet Potato	0	1	24	69	6
Tobacco: Burley	6	11	31	52	0

VP = Very Poor P = Poor F = Fair G = Good EX = Excellent

Scattered rain showers hampered silage harvest and second cutting of hay. Burley and pumpkin harvest is progressing well.
Julia Houck – Ashe-Alleghany County FSA

The dry spell continues in Jackson and Swain county over this last period with isolated thundershowers dropping approximately .25" in 25% or less of the counties, but 75%+ of the county had 0" of rain. Warmer than average temperatures were recorded for the period.

Robert Hawk – Swain County Extension

Weather conditions for the week have been hot and dry with only a trace of precipitation in parts of the county. Hay producers have made good progress harvesting second cutting hay. Vegetable harvest continues.

Stanley Holloway – Yancey County Extension

July Heat and drought took a harsh toll on what had hitherto been a fine crop of tobacco. Rains returned with the remains of Hurricane Harvey, but growers are uncertain if they can get all of their leaf harvested before frost, or cured in the event of a late Hurricane.

Taylor Williams – Moore County Extension

Continued dry and hot stressing soybeans. Corn harvest is moving forward.

Gary Cross – Person County Extension

Producers in Wilson County are trying to finish harvesting their Tobacco and starting to dig sweet potatoes.

Danny Tharrington – Wilson County FSA

Scattered rainfalls of 1-1.5 inches continue to delay harvest in some areas. Beginning to apply cotton defoliant materials.

Mike Carroll – Carteret County Extension

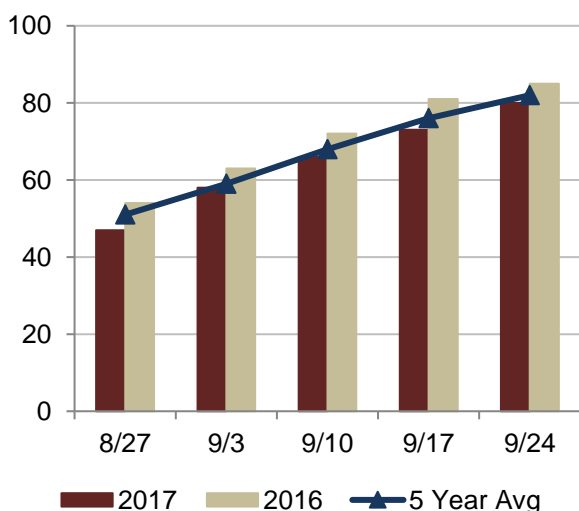
Corn harvest is nearing completion and soybean harvest is well underway. Cabbage planting is nearing completion and the crop is looking really good. Other tasks on the farm are mowing stalks and tilling corn fields. Farmers are also taking soil samples.

Al Wood – Pasquotank County Extension

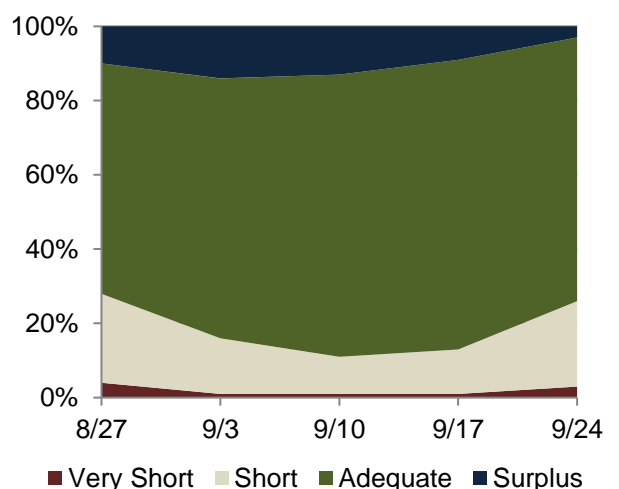
Drier conditions allowed corn harvest to continue with some soybeans harvested as well. Field work has begun to correct harvest related damage.

Daniel Simpson – Pamlico County Extension

FLUE-CURED TOBACCO PERCENT HARVESTED



TOPSOIL MOISTURE PERCENT



WEATHER SUMMARY FOR THE WEEK ENDING SEPTEMBER 24, 2017

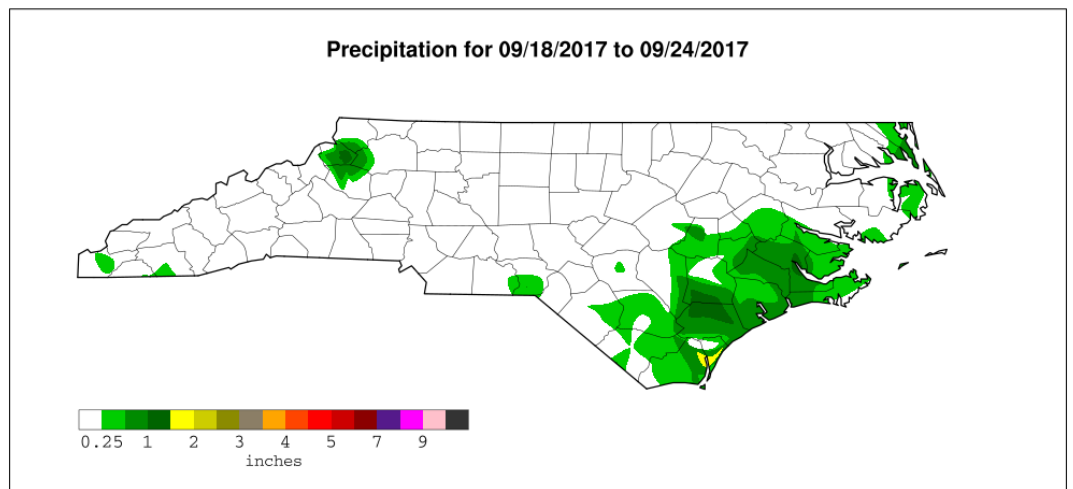
Location	Precipitation (Inches) ¹				Temperature (Degrees F.)				
	This Week		Year to Date		This Week				
	Total	Departure from Normal	Total	Departure from Normal	High	Low	Avg.	Departure from Normal	Degree Days (YTD)
Asheboro	0.04	-0.94	30.41	-5.41	86	60	73	4	3852
Asheville	0.00	-0.82	38.95	2.98	84	55	71	7	3271
Burlington	0.23	-0.75	31.28	-3.60	90	61	75	6	4076
Charlotte	0.00	-0.91	39.59	7.03	90	63	77	6	4241
Clayton	0.10	-0.92	47.28	11.90	88	62	74	4	3995
Clinton	0.39	-0.73	38.64	-0.36	91	64	76	5	4325
Elizabeth City	0.17	-0.99	37.51	0.23	89	61	75	4	4320
Erwin	0.11	-0.91	32.90	-5.13	90	64	77	8	4448
Fayetteville	0.02	-1.05	34.51	-2.38	91	64	78	7	4775
Gastonia-Gaston	0.00	-0.98	34.24	0.77	90	64	77	7	4148
Goldsboro	0.37	-0.82	36.87	-2.47	90	64	76	4	4523
Greensboro	0.00	-1.01	37.25	4.20	88	64	75	7	3916
Greenville	0.05	-1.14	43.09	3.92	89	64	76	5	4474
Hickory	0.00	-0.98	34.92	-2.44	87	62	74	6	3776
Jefferson	0.04	-0.84	45.66	8.20	85	48	65	5	2266
Kinston	0.68	-0.56	38.07	-2.25	89	61	75	5	4351
Maxton	0.13	-0.99	35.52	-2.03	93	62	77	6	4500
Mount Airy	0.15	-0.85	42.12	6.08	87	56	71	6	3213
New Bern	1.35	0.18	43.19	-0.14	90	64	77	5	4503
North Wilkesboro	0.15	-0.90	43.33	4.48	87	59	72	7	3536
Oxford	0.00	-0.98	26.67	-8.14	85	57	71	3	3415
Raleigh-Durham	0.00	-0.99	37.01	3.94	91	61	75	6	4279
Reidsville	0.07	-0.98	39.51	3.57	85	56	72	5	3670
Roanoke Rapids	0.02	-1.05	31.94	-3.31	89	65	77	8	4286
Robbinsville	0.00	-0.95	47.99	-2.43	82	54	69	4	2978
Rockingham	0.51	-0.54	30.43	-7.43	89	61	75	5	4290
Roxboro	0.00	-1.05	39.24	4.16	88	58	72	6	3601
Southern Pines	0.09	-0.89	32.50	-4.26	91	61	75	5	4348
Statesville	0.00	-0.95	39.47	4.68	87	59	72	4	3534
Tarboro	0.10	-1.03	43.42	7.55	89	59	75	6	4211
Vale	0.00	-0.92	42.02	6.29	88	60	74	5	3632
Wallace	1.46	0.07	46.79	3.15	91	61	76	3	4395
Washington	0.25	-1.00	40.17	1.51	89	63	76	6	4291
Waynesville	0.00	-0.80	34.33	-2.98	84	50	68	7	2694
Whiteville	0.30	-0.91	38.20	-2.07	89	61	75	3	4337
Williamston	0.16	-1.09	42.10	3.44	88	61	75	5	4273
Willington	0.05	-1.44	51.19	5.41	91	64	78	4	4638
Wilson	0.08	-1.07	41.57	4.67	89	61	75	5	4352
Winston Salem	0.01	-1.00	36.98	3.93	87	63	75	7	3890

¹ Precipitation data considered preliminary *Data not available.

PRECIPITATION SUMMARY

<http://www.awis.com/>

Map depicts accumulations through dates listed. This product is made possible by AWIS Weather Services, Inc.



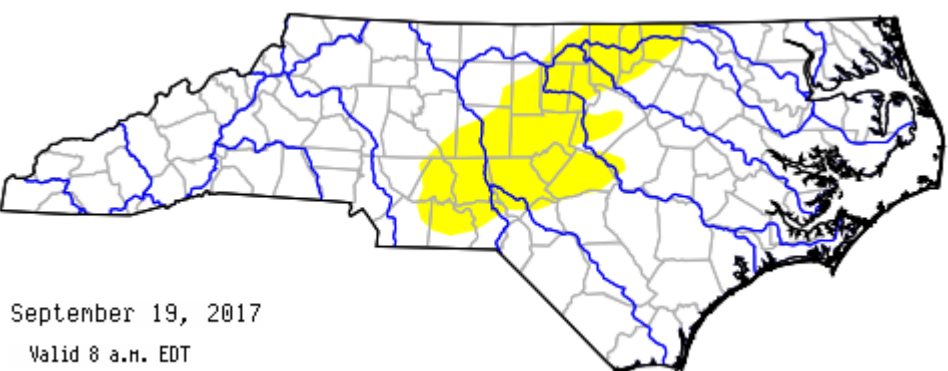
US DROUGHT MONITOR OF NORTH CAROLINA

<http://www.ncdrought.org/>

The US drought monitor focuses on broad scale conditions. Information provided for North Carolina is relative to information provided from all other states and the North Carolina Drought Management Advisory Council. Local conditions may vary.

Drought Classifications

- D0 - Abnormally Dry
- D1 - Moderate Drought
- D2 - Severe Drought
- D3 - Extreme Drought
- D4 - Exceptional Drought



County Boundaries
 Major River Basins ([View Map](#))
S = Short-Term, typically <6 months (e.g. agriculture, grasslands)
L = Long-Term, typically >6 months (e.g. hydrology, ecology)