

# North Carolina Weather & Crops Report

Released: April 9, 2018



## CROP SUMMARY FOR THE WEEK OF APRIL 8, 2018

### DAYS SUITABLE FOR FIELD WORK

This Week	Last Week	Last Year	5-Year Avg.
5.0	4.8	5.0	5.3

### SOIL MOISTURE PERCENT

	VS	ST	A	SS
Topsoil Moisture	0	5	74	21
Subsoil Moisture	0	8	75	17

VS= Very Short ST = Short A = Adequate SS = Surplus

### CROP PROGRESS PERCENT – WITH COMPARISONS

	This Week	Last Week	Last Year	5 Yr. Avg.
<b>PLANTED:</b>				
Corn	13	n/a	n/a	11

### CROP CONDITION PERCENT

	VP	P	F	G	EX
Barley	1	1	30	65	3
Oats	0	2	20	70	8
Pasture	1	5	35	57	2
Wheat	0	4	26	64	6

VP = Very Poor P = Poor F = Fair G = Good EX = Excellent

Drier conditions allowed many growers to make good progress with tobacco fumigation. Tobacco greenhouses are developing well. Most strawberries should have a good flush of berries over the next few weeks. **Don Nicholson – Agronomist Region 7** Land preparation efforts last week moved along nicely with the dry weather. Most strawberry growers were able to suffice with row covers during the cold snap as temperatures stayed mostly above freezing. Strawberry harvest at this time should start around the first of May. **Brandon Poole – Agronomist Region 8**

Some fair weather for planting allowed farmers to begin corn planting and bed land for tobacco. Rain on 4/7 and 4/9 will slow down progress in the next few days.

#### Jacob Morgan - Jones County Extension

Up and down temperatures looking at a cold wintery weekend wheat could be susceptible to winter kill if early variety.

#### Gary Cross – Person County Extension

Scattered snow finished out the week. Producers are still feeding hay. Reseeding of pastures may be necessary due to the wet conditions and cattle movement on the slopes.

#### Julia Houck – Ashe-Alleghany County Extension

Scattered showers throughout the county earlier in the week were beneficial to the crops but the cooler temperatures have hampered the growth that would occur with warmer weather.

#### Janice Nicholson – Rutherford County Extension

Wet soil conditions limited field activity for the week. Overall the county received between 1-1.5" inches of precipitation for the week. Temperatures were quite warm early in the week with highs in the lower 70's but cooled late in the week with light snow and lows into the mid 20's. Some early blooming fruit trees may have been affected by the cold temperatures; however, any damage should be minimal. Pastures are greening up nicely.

#### Stanley Holloway – Yancey County Extension

Corn planting occurred all week until the weekend when wet, cool weather set in. Unlikely to see any corn planted this coming week.

#### Daniel Simpson – Pamlico County Extension

Preparation of land for tobacco production, broadcast application of lime and fertilizer and limited planting of corn were primary

activities over the past week. Continued rainfall and cooler temperatures continue to delay progress.

#### Mike Carroll – Craven County Extension

Weather has been cooler than normal with average to above average rainfall (1.35" for period). Frost has occurred in the river valleys with temperatures from 25-30 F on 3 mornings. Daytime highs have ranged from 50-70 F. Soil is average rain on topsoil to very wet in subsoil. Farmers having a difficult time getting in fields to plow and till. **Robert Hawk – Swain County Extension**

Weather conditions continue to hinder planting progress for corn. Cold temperatures at night required row covers to be pulled over strawberries. **Cathy Herring – Central Crops Research Station** Wet, cold weather is still hindering plant growth. Wheat that has received nitrogen is growing well, close to normal progress.

Unfertilized wheat is short and growing slowly - needs nitrogen, but fields are still very wet. Spreader trucks are getting stuck frequently. Pastures are improving with improved weather conditions and fertilizer applications where soil conditions allow.

Not many problems reported from tobacco growers about greenhouses. **Paul Westfall – Granville County Extension** Little to no rain has allowed farmers to just about finish planting of Irish potatoes and cabbage as well as topdressing of wheat. A little corn and a few acres of soybean has been planted but as soon as the land dries out and warms up from this weekend's weather maker, corn planting should get underway. Wheat is looking good and is responding to the top-dress nitrogen. Much of the wheat is at or approaching flag leaf stage and depending on its planting date and the maturity of the wheat, wheat should be heading in the next 2 to 4 weeks.

#### Al Wood - Pasquotank County Extension

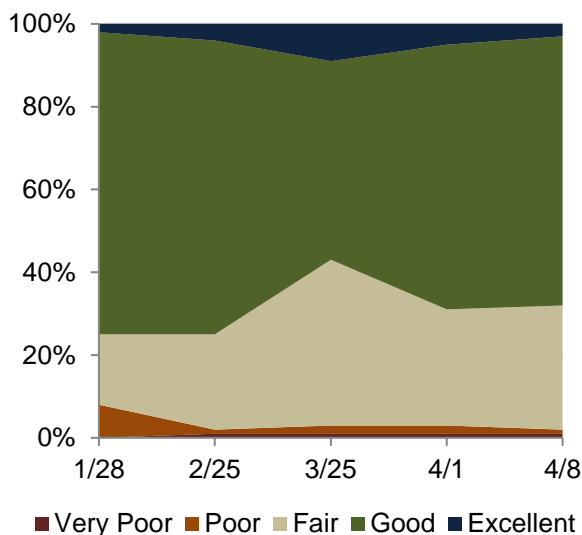
Last week was a good week for bedding tobacco land. Farmers took advantage of the dry weather. The end of this week will hopefully be the beginning of corn planting.

#### Charles Mitchell – Franklin County Extension

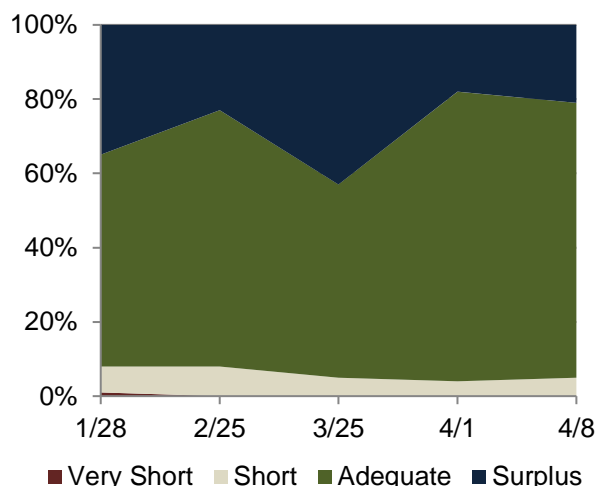
March weather has corn planting behind in comparison to previous years. Tobacco land is being prepared for planting. Wheat is looking good overall.

#### Mac Malloy – Robeson County Extension

### BARLEY CONDITION PERCENT



### TOPSOIL MOISTURE PERCENT



**WEATHER SUMMARY FOR THE WEEK OF APRIL 8, 2018\***

Location	Precipitation (Inches) <sup>1</sup>				Temperature (Degrees F.)				
	This Week		Year to Date		This Week				
	Total	Departure from Normal	Total	Departure from Normal	High	Low	Avg.	Departure from Normal	Degree Days (YTD)
ASHEBORO 2 W	0.87	0.03	11.49	0.85	78	32	54	-3	35
ASHEVILLE AIRPO	0.39	-0.40	13.11	0.94	75	31	51	-1	36
BURLINGTON ALAM	0.78	-0.36	9.24	-3.73	82	33	56	0	68
CHARLOTTE	0.40	-0.34	10.20	-2.09	81	36	58	2	80
CLAYTON WTP	1.38	0.57	13.28	0.97	82	32	56	-1	50
CLINTON 2 NE	0.00	-0.71	7.63	-4.10	80	40	60	2	12
ELIZABETH CITY	1.73	0.93	12.79	0.89	78	37	57	1	74
ERWIN AP	1.08	0.32	13.60	1.82	83	35	59	2	84
FAYETTEVILLE RE	0.75	-0.03	8.31	-2.49	85	36	60	0	98
GASTONIA MUNICI	0.40	-0.49	10.81	-2.29	81	37	59	2	80
GOLDSBORO	0.00	-0.82	8.57	-2.84	84	34	58	-1	79
GREENSBORO AP	1.03	0.19	11.55	0.10	77	31	54	-2	54
GREENVILLE	1.95	1.20	14.62	2.51	83	35	57	-2	64
HICKORY FAA AIR	0.53	-0.39	12.21	-0.87	76	31	54	-1	54
JEFFERSON 2 E	0.24	-0.63	12.87	-1.69	71	23	45	-2	10
LAURINBURG MAXT	0.62	0.00	8.38	-1.12	84	35	59	0	86
MOUNT AIRY 2 W	0.45	-0.45	12.97	1.00	73	28	50	-1	16
NEW BERN	0.00	-0.76	10.63	-3.71	82	35	57	-3	72
NORTH WILKESBOR	0.84	-0.11	13.45	-0.09	76	30	53	0	29
OXFORD AG	0.00	-0.81	9.99	-1.84	75	34	54	-1	36
RALEIGH AP	0.99	0.27	11.40	-1.05	80	32	56	-1	68
REIDSVILLE 2 NW	0.00	-0.94	11.44	-1.20	74	33	55	0	28
ROANOKE RAPIDS	1.15	0.29	11.07	-0.76	78	34	55	0	40
ROBBINSVILLE AG	1.61	0.16	18.27	2.06	79	27	50	-3	32
ROCKINGHAM	0.84	0.16	16.85	5.02	84	34	60	2	94
ROXBORO 7 ESE	0.66	0.15	10.13	-3.09	73	32	51	-3	35
SOUTHERN PINES	0.78	0.02	6.99	-4.49	81	33	58	2	87
STATESVILLE 2 N	0.68	-0.18	10.68	-1.26	78	28	53	1	32
TARBORO 1 S	1.04	0.32	10.77	-0.80	81	34	56	0	49
VALE AG 2 SW	0.58	-0.27	13.67	0.69	79	29	54	-2	42
WALLACE 1SE	1.54	0.74	13.04	0.42	84	35	58	1	60
WASHINGTON	0.00	-0.77	11.77	-0.92	79	37	59	0	46
WAYNESVILLE 1 E	0.20	-0.70	12.75	-1.06	74	24	51	2	22
WHITEVILLE 7 NW	0.00	-0.70	7.26	-4.45	85	38	62	4	64
WILLIAMSTON 1 E	0.00	-0.74	11.93	-0.01	81	42	60	3	52
WILMINGTON INTL	1.07	0.37	12.97	0.04	82	37	61	0	96
WILSON 3 SW	0.00	-0.69	11.55	-0.37	82	39	61	3	52
WINSTON SALEM R	1.02	-0.02	10.60	-1.87	78	31	54	-2	54

\*Effective October 15, 2017 the weather data source has been changed. The basic format of the data tables has not changed, but the data content will be based on newer historical datasets used for average calculations and changes in methodology subroutines for missing data.

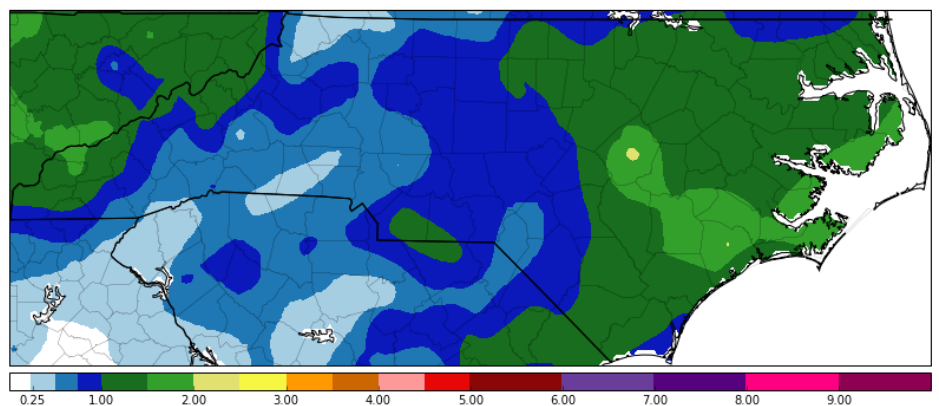
<sup>1</sup>Precipitation (rain or melted snow/ice) NOAA Regional Climate Centers data.

**PRECIPITATION SUMMARY**

Map depicts accumulations through dates listed. This product is made possible by Clear Science, Inc.

North Carolina Region

Precipitation Accumulation (inches)  
2018-04-02 - 2018-04-08



**US DROUGHT MONITOR OF NORTH CAROLINA**

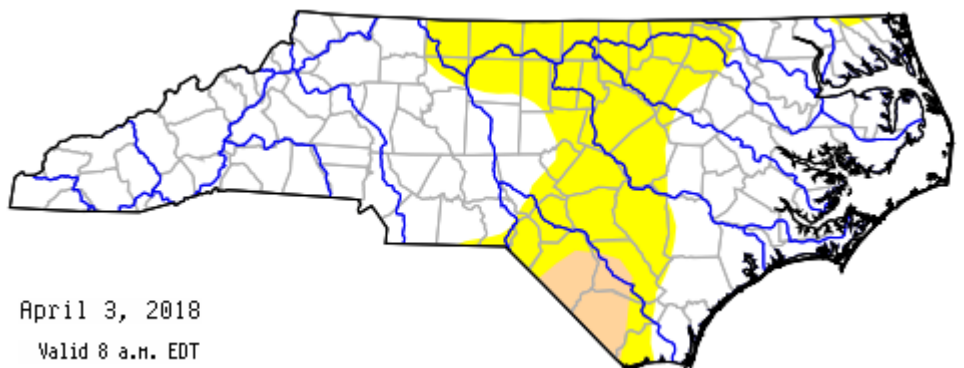
<http://www.ncdrought.org/>

The US drought monitor focuses on broad scale conditions. Information provided for North Carolina is relative to information provided from all other states and the North Carolina Drought Management Advisory Council. Local conditions may vary.

**Drought Classifications**

- D0 - Abnormally Dry
- D1 - Moderate Drought
- D2 - Severe Drought
- D3 - Extreme Drought
- D4 - Exceptional Drought

April 3, 2018  
Valid 8 a.m. EDT



County Boundaries
  Major River Basins ([View Map](#))  
**S** = Short-Term, typically <6 months (e.g. agriculture, grasslands)  
**L** = Long-Term, typically >6 months (e.g. hydrology, ecology)