

North Carolina Weather & Crops Report

Released: September 17, 2018



CROP SUMMARY FOR THE WEEK OF SEPTEMBER 16, 2018

DAYS SUITABLE FOR FIELD WORK

This Week	Last Week	Last Year	5-Year Avg.
3.7	6.6	5.6	6.2

SOIL MOISTURE PERCENT

	VS	ST	A	SS
Topsoil Moisture	0	1	20	79
Subsoil Moisture	0	2	28	70

VS= Very Short ST = Short A = Adequate SS = Surplus

CROP PROGRESS PERCENT – WITH COMPARISONS

	This Week	Last Week	Last Year	5 Yr. Avg.
PHENOLOGICAL:				
Corn Mature	93	90	92	94
Cotton Bolls Opening	59	43	52	54
Soybeans Setting Pods	96	92	95	92
Soybeans Dropping Leaves	29	17	25	21
HARVESTED:				
Apples	62	60	56	55
Corn for Grain	66	43	66	64
Corn for Silage	89	84	79	81
Hay: Second Cutting	97	94	98	93
Hay: Third Cutting	54	47	51	52
Sorghum	7	4	23	14
Sweet Potatoes	12	8	13	16
Tobacco: Burley	33	28	39	49
Tobacco: Flue-cured	70	67	72	74

CROP CONDITION PERCENT

	VP	P	F	G	EX
Corn	11	20	36	27	6
Cotton	5	14	33	43	5
Hay	2	12	55	29	2
Pasture	3	13	43	40	1
Peanuts	4	8	32	51	5
Sorghum	4	10	37	45	4
Soybeans	4	8	33	48	7
Sweet Potatoes	1	8	45	44	2
Tobacco: Burley	3	6	45	45	1

Crop conditions should be considered preliminary or incomplete at this point. More will be known in the weeks to come as the impacts of Hurricane Florence are determined.

VP = Very Poor P = Poor F = Fair G = Good EX = Excellent

Hurricane Florence dropped about 6 inches of rain over the last week in Franklin County. There may be standing water in some soybean fields, but they should be fine. Our harvest of the tobacco crop will be delayed, but it will begin to ripen quickly after the storm and we may not have enough barns to save it. There is some wind damage to the crop, but it was spared the worst. This year's tobacco crop has experienced all the stresses it can take. Pastures needed the rain we received to rejuvenate them.

Charles Mitchell – Franklin County Extension

Assessment of crop impacts from Florence will begin early this week. Overall I expect corn and soybean impacts to be low except for flood prone areas. The tobacco crop in the region will have the most impact from the hurricane.

Brandon Poole – Agronomist Region 8

Excessive rains and winds from Hurricane Florence have damaged the tobacco crop. It is unclear what will be the final result will be for that crop and others as waters recede.

Don Nicholson – Agronomist Region 7

Hurricane Florence dumped 10-15 inches in Johnston County. We expect some fields to be flooded and have wind damage.

Tim Britton – Johnston County Extension

Hurricane Florence will drop rain and wind. Next week will show what damage to crops has occurred.

Gary Cross - Person County Extension

Peripheral effects from Hurricane Florence put a stop to field work during the latter part of the week. Farmers worked overtime to harvest tobacco prior to the storm's arrival, as the potential impact was unknown. Fortunately, while Warren County has experienced windy and rainy conditions, there was nothing too severe. Scattered temporary power outages occurred. Rain is predicted for a few more days, which will further delay field activities.

Paul McKenzie - Warren County Extension

Harvest continued until the hurricane stopped progress. So far only low lying areas have been affected by wind or flooding. Less rain than expected fell during the week as the storm turned south. Farmers experienced spotty power outages due to the weather conditions. Pastures are still in decent shape, and livestock is in good condition, with some farmers moving herds out of lower areas. Farmers in this area have been fortunate.

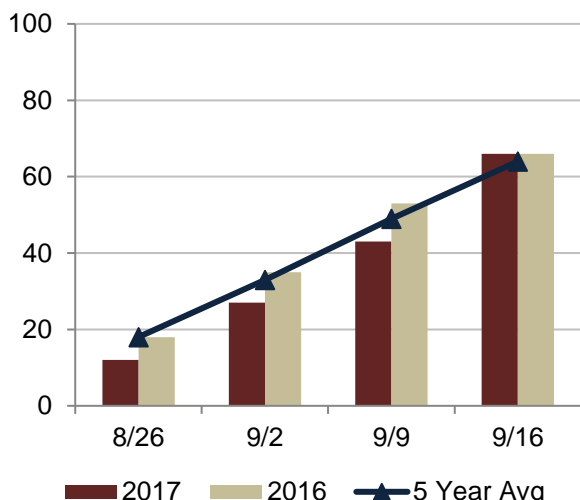
Paul Westfall - Granville Extension

Damage assessments being conducted in Wilson County from effects of Hurricane Florence.

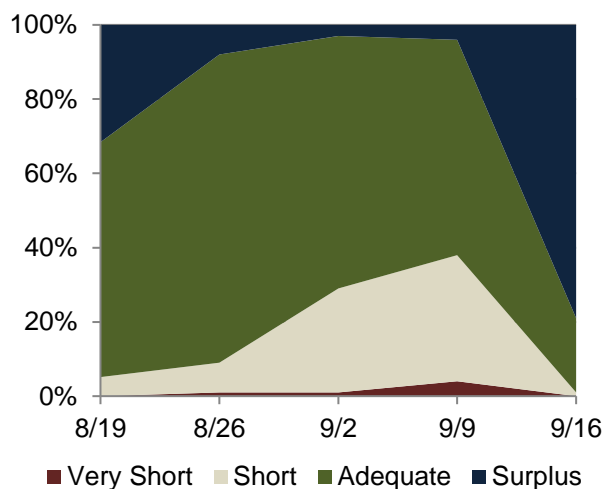
Danny Tharrington – Wilson County FSA

NCSU Cunningham Research Station received 13" of rain from Florence. **Phillip Winslow – NCSU Lower Coastal Station**

CORN FOR GRAIN PERCENT HARVESTED



TOPSOIL MOISTURE PERCENT



WEATHER SUMMARY FOR THE WEEK OF SEPTEMBER 16, 2018

Location	Precipitation (Inches) ¹				Temperature (Degrees F.)				
	This Week		Year to Date		This Week				
	Total	Departure from Normal	Total	Departure from Normal	High	Low	Avg.	Departure from Normal	Degree Days (YTD)

Due to the impact of Hurricane Florence and inconsistencies in the precipitation data the precipitation amounts, temperature and precipitation map will not be released this week.

Sorry for the inconvenience.

**Effective October 15, 2017 the weather data source has been changed. The basic format of the data tables has not changed, but the data content will be based on newer historical datasets used for average calculations and changes in methodology subroutines for missing data.*

¹Precipitation (rain or melted snow/ice) NOAA Regional Climate Centers data.

PRECIPITATION SUMMARY

Map depicts accumulations through dates listed. This product is made possible by Clear Science, Inc.

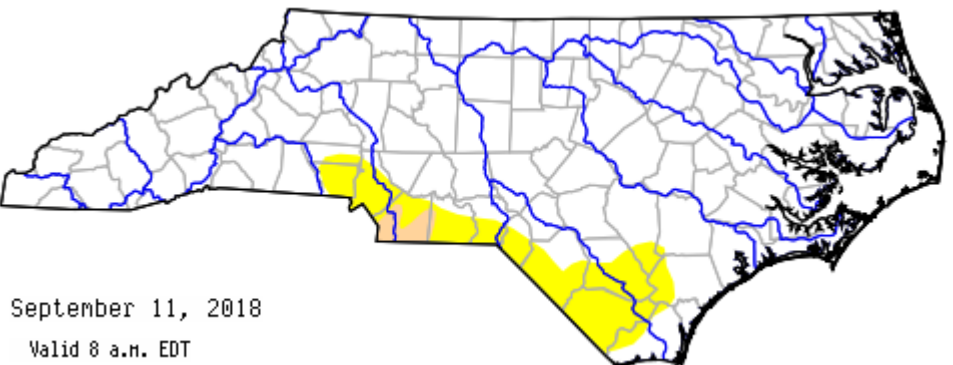
US DROUGHT MONITOR OF NORTH CAROLINA

<http://www.ncdrought.org/>

The US drought monitor focuses on broad scale conditions. Information provided for North Carolina is relative to information provided from all other states and the North Carolina Drought Management Advisory Council. Local conditions may vary.

Drought Classifications

- D0 - Abnormally Dry
- D1 - Moderate Drought
- D2 - Severe Drought
- D3 - Extreme Drought
- D4 - Exceptional Drought



September 11, 2018

Valid 8 a.m. EDT

County Boundaries
 Major River Basins ([View Map](#))

S = Short-Term, typically <6 months (e.g. agriculture, grasslands)
L = Long-Term, typically >6 months (e.g. hydrology, ecology)