

# North Carolina Crop Progress & Condition Report

Released: April 18, 2022



## CROP SUMMARY FOR THE WEEK ENDING APRIL 17, 2022

*Crop information in this report is provided voluntarily by county officials of the Cooperative Extension Service, FSA, NRCS, and other knowledgeable individuals.*

### DAYS SUITABLE FOR FIELD WORK

This Week	Last Week	Last Year
6.6	5.3	5.1

### SOIL MOISTURE PERCENT

	VS	ST	A	SS
Subsoil Moisture	3	21	75	1
Topsoil Moisture	4	23	72	1

VS= Very Short ST = Short A = Adequate SS = Surplus

### CROP PROGRESS PERCENT – WITH COMPARISONS

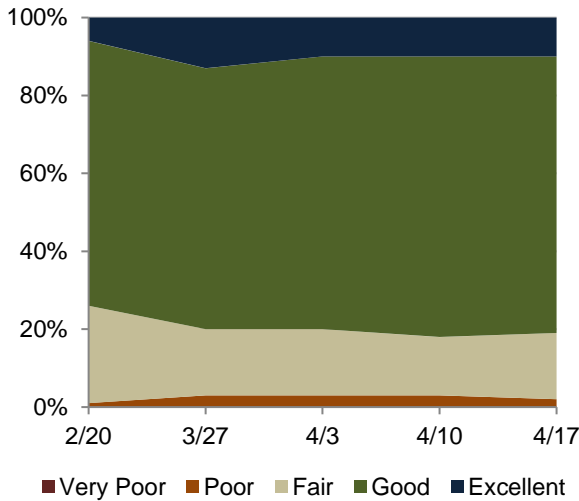
	This Week	Last Week	Last Year	5Yr Avg
<b>PLANTED:</b>				
Corn	39	17	37	35
<b>PHENOLOGICAL:</b>				
Barley Headed	39	15	32	21
Corn Emerged	10	n/a	11	n/a
Winter Wheat Headed	30	12	n/a	15

### CROP CONDITION PERCENT

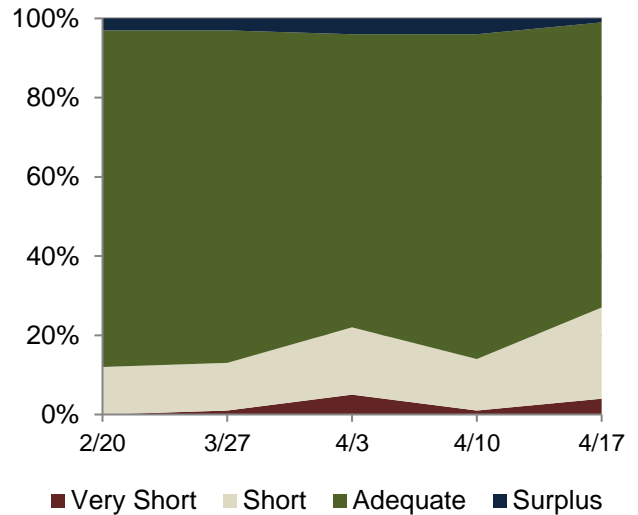
	VP	P	F	G	EX
Barley	0	2	15	80	3
Oats	0	0	37	56	7
Pasture	1	10	58	28	3
Strawberries	0	1	7	84	8
Winter Wheat	0	2	17	71	10

VP = Very Poor P = Poor F = Fair G = Good EX = Excellent

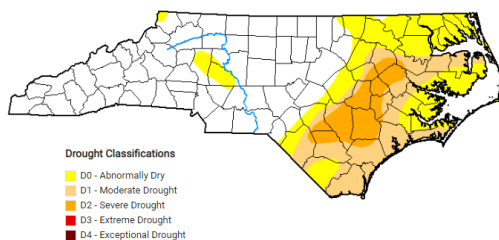
### WINTER WHEAT CONDITION



### TOPSOIL MOISTURE PERCENT

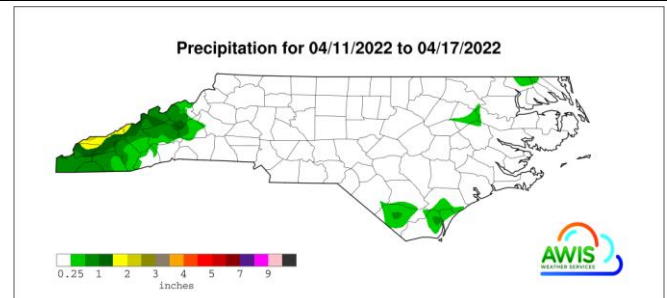


Map depicts current drought conditions as of April 12, 2022.



The US Drought Monitor focuses on broad scale conditions. Information provided for North Carolina is relative to information provided from all other states and the North Carolina Drought Management Advisory Council. Local conditions may vary. <http://www.ncdrought.org/>

### Precipitation for 04/11/2022 to 04/17/2022



Map depicts accumulations through dates listed. This product is made possible by AWIS Weather Services, Inc. <http://www.awis.com/>

**WEATHER SUMMARY FOR THE WEEK ENDING APRIL 17, 2022 <sup>1</sup>**

Location	Precipitation (Inches)				Temperature (Degrees F.)				
	This Week		Year to Date		This Week				
	Total	Departure from Normal	Total	Departure from Normal	High	Low	Avg.	Departure from Normal	Degree Days (YTD)
Asheboro Airport	0.02	-0.68	13.26	-0.13	82	37	62	4	389
Asheville Municipal AP	0.13	-0.64	15.97	1.53	75	35	57	4	196
Boone	0.23	-0.88	15.58	-0.42	71	31	53	6	88
Burlington AP	0.01	-0.69	14.03	1.33	81	37	62	4	361
Charlotte	0	-0.64	14.42	0.8	82	39	65	4	494
Clayton WTP	0	-0.7	14.5	1.19	85	43	65	7	592
Clinton_2NE	0	-0.75	10.31	-3.44	82	37	64	4	560
Elizabeth City	0.05	-0.58	14.51	0.48	83	38	63	5	498
Elizabethtown_NC	0.11	-0.52	8.16	-4.95	85	41	66	5	675
Erwin_AP	0.05	-0.66	11.67	-2.17	85	39	64	6	538
Fayetteville_AP	0.01	-0.65	8.11	-5.13	85	40	66	6	618
Frisco	0	-0.72	12.47	-4.16	77	49	66	7	724
Gastonia-Gaston	0	-0.63	14.59	0.24	79	33	62	3	392
Goldsboro_AFB	0.05	-0.72	10.99	-3.57	86	40	65	3	584
Greensboro_AP	0	-0.77	13.25	0.85	81	37	62	5	352
Greenville Airport	0.07	-0.7	11.27	-2.41	86	43	65	5	546
Hickory	0.09	-0.75	14.28	-0.85	78	38	60	2	337
Jacksonville_AP	0	-0.7	10.27	-3.57	84	40	64	3	640
Jacksonville_EOC	0	-0.7	12.13	-1.71	84	39	64	3	596
Jefferson_2E	0	-0.88	13.88	0.45	73	27	52	4	85
Kinston Airport	0.05	-0.65	10.84	-3.21	86	39	65	4	576
Louisburg	0	-0.7	13.09	-0.18	82	35	61	5	352
Maxton	0.02	-0.61	10.62	-3.33	86	40	66	6	618
Mt_Airy_2W	0	-0.84	15.32	2.36	77	32	57	3	206
New_Bern	0	-0.77	11.49	-3.49	85	41	65	5	625
North_Wilkesboro	0	-0.89	13.78	-0.72	79	34	59	4	274
Oxford_AP	0	-0.63	12.06	-0.74	81	37	61	5	291
Raleigh	0	-0.63	15.41	2.34	84	41	65	7	518
Reidsville_2NW	0.1	-0.6	13.9	1.17	81	38	61	5	345
Roanoke_Rap_Dam	0	-0.7	15.26	2.18	83	38	62	5	363
Robbinsville_AG	0.83	-0.36	20.35	-1.36	77	28	56	2	196
Rockingham	0.01	-0.62	13.5	-0.14	84	36	65	5	550
Roxboro Airport	0.02	-0.61	12.54	-0.03	79	34	61	5	287
Southern_Pines	0	-0.66	12.3	-1.51	84	39	65	6	504
Statesville_2NNE	0.06	-0.6	13.5	0.21	79	35	58	0	275
Tarboro_1S	0.4	-0.3	9.57	-4.05	84	39	63	7	453
Vale_Ag_2SW	0	-0.72	17.54	3.72	80	28	58	0	278
Wadesboro Airport	0.08	-0.48	12.39	-1.83	82	36	64	4	455
Washington	0.01	-0.69	10.05	-3.17	85	44	65	6	554
Waynesville_1E	0.46	-0.34	19.44	3.84	75	35	57	6	177
Whiteville_7NW	0.01	-0.62	7.54	-6.09	85	40	66	4	633
Williamston_1E	0	-0.7	10.88	-2.5	85	40	65	6	546
Wilmington_AP_NC	0.37	-0.26	9.91	-4.09	83	43	66	4	721
Winston-Salem	0.1	-0.67	14.26	1.86	81	40	63	6	400

<sup>1</sup> This data is made possible by AWIS Weather Services, Inc. <http://www.awis.com/> ...