

# North Carolina Crop Progress & Condition Report

Released: April 17, 2023



## CROP SUMMARY FOR THE WEEK ENDING APRIL 16, 2023

Crop information in this report is provided voluntarily by county officials of the Cooperative Extension Service, FSA, NRCS, and other knowledgeable individuals.

### DAYS SUITABLE FOR FIELD WORK

This Week	Last Week	Last Year
4.7	4.3	6.6

### SOIL MOISTURE PERCENT

	VS	ST	A	SS
Subsoil Moisture	0	7	79	14
Topsoil Moisture	0	3	70	27

VS= Very Short ST = Short A = Adequate SS = Surplus

### CROP PROGRESS PERCENT – WITH COMPARISONS

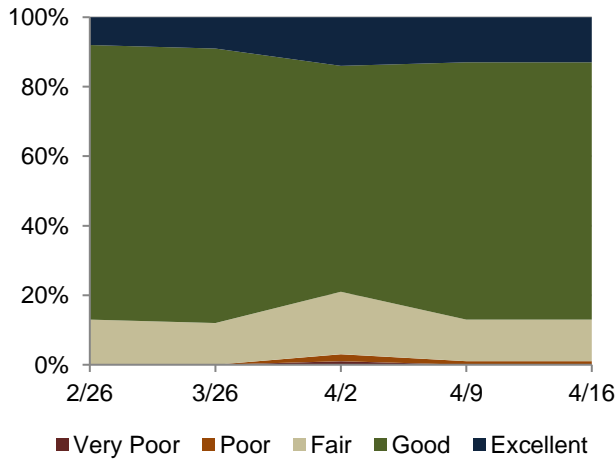
	This Week	Last Week	Last Year	5Yr Avg
<b>PLANTED:</b>				
Corn	28	12	36	32
Tobacco Flue-Cured	10	n/a	n/a	n/a
<b>PHENOLOGICAL:</b>				
Barley Headed	35	15	36	25
Corn Emerged	10	n/a	n/a	n/a
Winter Wheat Headed	33	17	27	14

### CROP CONDITION PERCENT

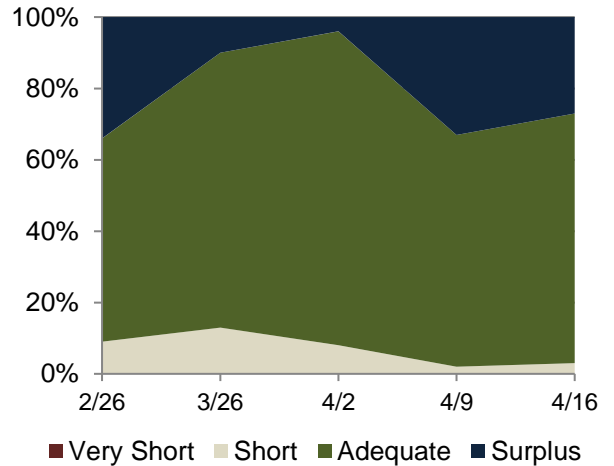
	VP	P	F	G	EX
Barley	0	3	17	78	2
Oats	0	3	21	65	11
Pasture	1	2	29	65	3
Strawberries	0	1	19	72	8
Winter Wheat	0	1	12	74	13

VP = Very Poor P = Poor F = Fair G = Good EX = Excellent

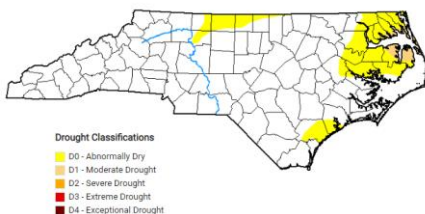
### WINTER WHEAT CONDITION



### TOPSOIL MOISTURE PERCENT

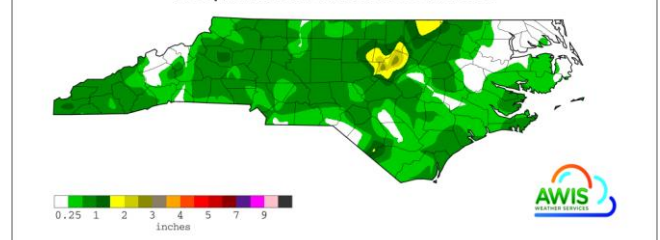


Map depicts current drought conditions as of April 11, 2023.



The US Drought Monitor focuses on broad scale conditions. Information provided for North Carolina is relative to information provided from all other states and the North Carolina Drought Management Advisory Council. Local conditions may vary. <http://www.ncdrought.org/>

### Precipitation for 04/10/2023 to 04/16/2023



Map depicts accumulations through dates listed. This product is made possible by AWIS Weather Services, Inc. <http://www.awis.com/>

**WEATHER SUMMARY FOR THE WEEK ENDING APRIL 16, 2023 <sup>1</sup>**

Location	Precipitation (Inches)				Temperature (Degrees F.)				
	This Week		Year to Date		This Week				
	Total	Departure from Normal	Total	Departure from Normal	High	Low	Avg.	Departure from Normal	Degree Days (YTD)
Asheboro	0.65	-0.05	13.44	0.15	80	33	58	0	465
Asheville_Munic	0.29	-0.48	13.03	-1.3	77	31	55	2	305
Boone	0.59	-0.53	12.93	-2.92	75	26	52	4	156
Burlington AP	0.68	-0.02	13.34	0.74	82	32	58	0	422
Charlotte	0.39	-0.26	14.52	0.99	80	37	61	1	599
Clayton WTP	0.25	-0.45	13.55	0.34	83	40	63	5	713
Clinton_2NE	0.11	-0.64	10.71	-2.93	82	36	61	1	652
Elizabeth City 1.8 SE	0.09	-0.54	11.38	-2.56	83	31	60	2	549
Elizabethtown_NC	0.2	-0.43	10.47	-2.55	83	36	61	1	754
Erwin_AP	0.69	-0.03	13.01	-0.73	82	34	59	2	572
Fayetteville_AP	0.13	-0.54	10.52	-2.63	82	36	61	2	706
Frisco	0.43	-0.3	13.84	-2.69	74	44	60	1	609
Gastonia-Gaston	0.67	0.03	15.53	1.27	78	35	58	0	510
Goldsboro_AFB	0.2	-0.57	12.78	-1.67	82	35	61	0	654
Greensboro_AP	0.81	0.04	14.84	2.55	80	36	59	2	432
Greenville Airport	0.06	-0.71	11.52	-2.05	82	32	60	0	597
Hickory	0.42	-0.42	13.27	-1.74	78	33	58	1	413
Jacksonville_AP	0.48	-0.22	10.13	-3.61	82	39	61	1	727
Jacksonville_EOC	0.47	-0.23	12.46	-1.84	82	34	61	0	724
Jefferson_2E	0.4	-0.47	12.73	-0.57	77	22	49	2	146
Kinston Airport	0.48	-0.23	12.41	-1.54	82	32	61	0	638
Louisburg	2.9	2.2	17.01	3.84	83	33	58	2	434
Mt_Airy_2W	0.8	-0.04	15.24	2.4	82	29	56	3	267
New_Bern	0.45	-0.32	12.09	-2.78	82	38	61	1	724
North_Wilkesboro	0.5	-0.4	13.74	-0.64	81	30	57	3	357
Oxford_NC	0.75	0.12	12.06	-0.65	80	30	56	1	331
Raleigh	2.89	2.26	15.2	2.22	83	36	61	3	623
Red Springs 3.8 NW	0.85	0.22	14.05	0.19	83	37	61	1	763
Reidsville_2NW	0.37	-0.33	12.36	-0.27	82	35	60	3	428
Roanoke_Rap_Dam	0.62	-0.08	13.06	0.08	84	34	58	2	400
Robbinsville_AG	0.64	-0.55	23.91	2.37	78	32	56	3	316
Rockingham	0.21	-0.42	13.29	-0.26	80	34	59	0	622
Roxboro Airport	0.77	0.14	12.23	-0.25	81	30	56	0	308
Southern_Pines	0.57	-0.1	11.18	-2.54	81	29	61	1	598
Statesville_2NNE	0.88	0.21	13.5	0.3	79	31	56	-2	346
Tarboro_1S	0	-0.7	11.79	-1.73	82	33	60	4	551
Vale_Ag_2SW	0.53	-0.19	14.6	0.89	81	32	57	-1	389
Wadesboro_AP	0.49	-0.07	12.62	-1.52	79	32	57	-3	517
Washington	0.33	-0.37	11.19	-1.93	82	33	60	1	601
Waynesville_1E	0.7	-0.11	19.86	4.37	75	28	53	2	215
Whiteville_7NW	0.45	-0.19	11.51	-2.03	82	38	61	0	757
Williamston_1E	0.11	-0.59	11.54	-1.74	82	35	61	2	604
Wilmington_AP_NC	0.85	0.22	11.4	-2.51	84	42	64	2	918
Winston-Salem	0.21	-0.56	11.84	-0.45	81	37	60	3	474

<sup>1</sup> This data is made possible by AWIS Weather Services, Inc. <http://www.awis.com/> ...