

North Carolina Crop Progress & Condition Report

Released: May 22, 2023



CROP SUMMARY FOR THE WEEK ENDING MAY 21, 2023

Crop information in this report is provided voluntarily by county officials of the Cooperative Extension Service, FSA, NRCS, and other knowledgeable individuals.

DAYS SUITABLE FOR FIELD WORK

This Week	Last Week	Last Year
5.8	6.2	6.3

SOIL MOISTURE PERCENT

	VS	ST	A	SS
Subsoil Moisture	0	8	88	4
Topsoil Moisture	1	14	80	5

VS= Very Short ST = Short A = Adequate SS = Surplus

CROP PROGRESS PERCENT – WITH COMPARISONS

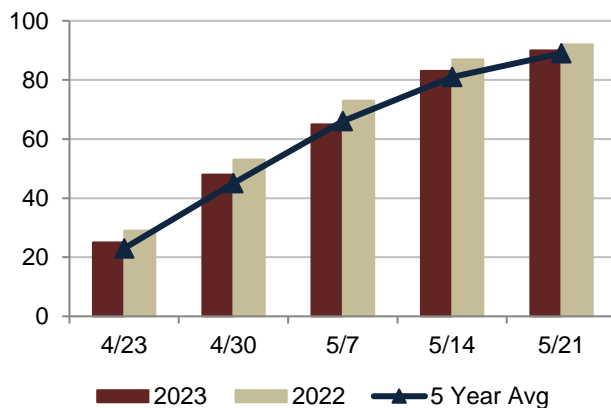
	This Week	Last Week	Last Year	5Yr Avg
PLANTED:				
Cotton	43	26	65	55
Peanuts	55	35	59	50
Sorghum	25	15	44	25
Soybeans	47	32	59	46
Sweet Potatoes	15	n/a	26	20
Tobacco Burley	20	10	11	17
Tobacco Flue-Cured	90	83	85	86
PHENOLOGICAL:				
Corn Emerged	90	83	92	89
Soybeans Emerged	30	14	41	29
HARVESTED:				
Hay: First Cutting	56	46	51	53

CROP CONDITION PERCENT

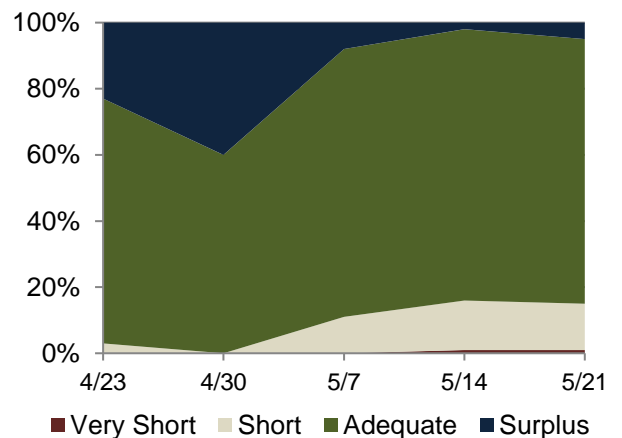
	VP	P	F	G	EX
Apples	0	3	43	54	0
Barley	0	2	11	85	2
Corn	1	1	29	60	9
Hay	0	2	28	66	4
Oats	1	2	7	74	16
Pasture	1	2	12	82	3
Peaches	7	36	51	5	1
Strawberries	0	3	41	55	1
Tobacco Flue-Cured	0	2	23	65	10
Winter Wheat	0	1	10	72	17

VP = Very Poor P = Poor F = Fair G = Good EX = Excellent

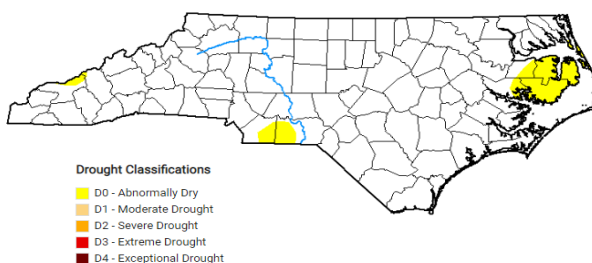
CORN EMERGED



TOPSOIL MOISTURE PERCENT

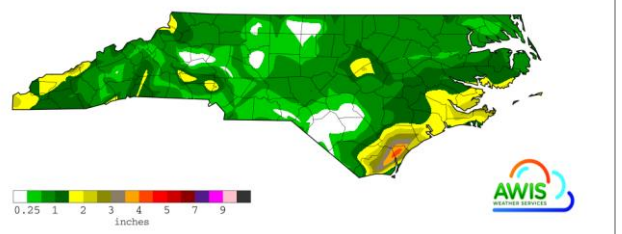


Map depicts current drought conditions as of May 16, 2023.



The US Drought Monitor focuses on broad scale conditions. Information provided for North Carolina is relative to information provided from all other states and the North Carolina Drought Management Advisory Council. Local conditions may vary. <http://www.ncdrought.org/>

Precipitation for 05/15/2023 to 05/21/2023



Map depicts accumulations through dates listed. This product is made possible by AWIS Weather Services, Inc. <http://www.awis.com/>

WEATHER SUMMARY FOR THE WEEK ENDING MAY 21, 2023 ¹

Location	Precipitation (Inches)				Temperature (Degrees F.)				
	This Week		Year to Date		This Week				
	Total	Departure from Normal	Total	Departure from Normal	High	Low	Avg.	Departure from Normal	Degree Days (YTD)
Asheboro	0.59	-0.39	17.61	-0.05	84	58	67	0	912
Asheville_Munic	0.51	-0.54	16.59	-2.31	83	53	66	4	682
Boone	1.01	-0.11	17.95	-3.34	78	45	60	3	388
Burlington AP	0.24	-0.77	17.06	0.07	84	56	67	0	876
Charlotte	0.43	-0.42	18.63	1.3	84	59	70	1	1166
Clayton WTP	2.15	1.23	19.42	2.04	87	62	72	4	1321
Clinton_2NE	0.82	-0.3	15.81	-2.65	86	54	70	0	1216
Elizabeth City 1.8 SE	0.33	-0.72	14.84	-3.5	81	51	68	0	1089
Elizabethtown_NC	0.32	-0.59	16.01	-0.91	88	56	70	1	1365
Erwin_AP	0.7	-0.16	16.97	-0.65	86	57	69	2	1114
Fayetteville_AP	0.24	-0.59	12.8	-3.99	89	56	71	2	1325
Frisco	4.26	3.35	22.55	1.93	77	57	69	1	1199
Gastonia-Gaston	0.34	-0.64	19.96	1.68	82	58	69	1	991
Goldsboro_AFB	0.86	-0.02	16.67	-1.86	87	56	70	-1	1237
Greensboro_AP	0.42	-0.49	19.18	2.56	83	55	67	1	896
Greenville Airport	1.17	0.17	15.93	-2.08	86	50	68	-1	1140
Hickory	0.12	-0.92	16.69	-2.95	83	52	67	1	879
Jacksonville_AP	1.79	0.88	13.79	-3.9	81	54	69	-1	1300
Jacksonville_EOC	1.8	0.61	17.84	-1.43	83	51	68	-1	1296
Jefferson_2E	1.22	0.1	18.68	0.27	77	43	59	1	344
Kinston Airport	1.27	0.36	16.74	-1.19	88	53	69	-1	1205
Louisburg	1.67	0.62	21.5	3.81	84	55	66	1	885
Mt_Airy_2W	0.6	-0.39	20.8	3.21	83	52	65	1	621
New_Bern	1.9	0.92	17.36	-1.86	82	52	69	0	1320
North_Wilkesboro	0.9	-0.15	19.07	-0.08	83	54	66	1	778
Oxford_NC	0.79	-0.18	16.75	-0.12	80	52	64	-2	699
Raleigh	1.27	0.36	20.3	3.43	86	58	70	2	1189
Red Springs 3.8 NW	1.11	0.26	18.34	0.87	89	60	71	1	1389
Reidsville_2NW	0.12	-0.86	15.34	-1.6	83	54	66	0	867
Roanoke_Rap_Dam	0.82	-0.17	18.13	0.67	82	52	66	0	878
Robbinsville_AG	1.48	0.33	28.98	1.64	83	53	67	4	661
Rockingham	0.16	-0.81	15.97	-1.61	88	56	70	1	1174
Roxboro Airport	0.76	-0.15	16.84	0.42	81	52	64	-1	654
Southern_Pines	0.75	-0.15	16.01	-1.58	86	57	68	0	1143
Statesville_2NNE	0.3	-0.75	17.33	-0.2	83	56	67	0	754
Tarboro_1S	0.41	-0.5	16.5	-1.05	83	54	67	0	1069
Vale_Ag_2SW	2	0.92	20.7	2.32	87	54	67	0	814
Wadesboro_AP	0.29	-0.65	15.87	-2.09	86	57	68	-1	1009
Washington	1.29	0.17	15.67	-2.2	84	49	67	-1	1149
Waynesville_1E	0.74	-0.24	22.51	2.5	79	47	63	3	475
Whiteville_7NW	0.87	-0.22	14.91	-3.08	86	58	71	0	1351
Williamston_1E	0.64	-0.41	14.64	-3.18	83	52	68	0	1148
Wilmington_AP_NC	4.36	3.32	19.13	0.95	88	58	73	3	1611
Winston-Salem	0.4	-0.51	17.31	0.69	84	56	68	2	965

¹ This data is made possible by AWIS Weather Services, Inc. <http://www.awis.com/> ...