

MAY



# MONTHLY FARM REPORT

## North Carolina Field Office



Post Office Box 27767 | Raleigh, North Carolina 27611 | Telephone: 919-707-3333 | Email: [ncagstat@ncagr.gov](mailto:ncagstat@ncagr.gov)

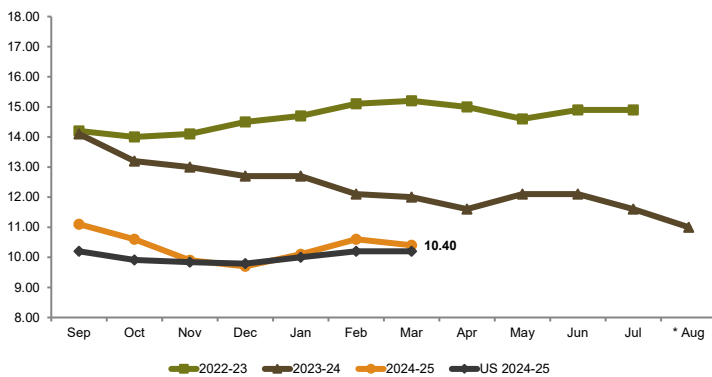
[www.ncagr.gov/stats](http://www.ncagr.gov/stats) or [www.nass.usda.gov](http://www.nass.usda.gov)

Released May 27, 2025



### MONTHLY PRICE RECEIVED FOR SOYBEANS

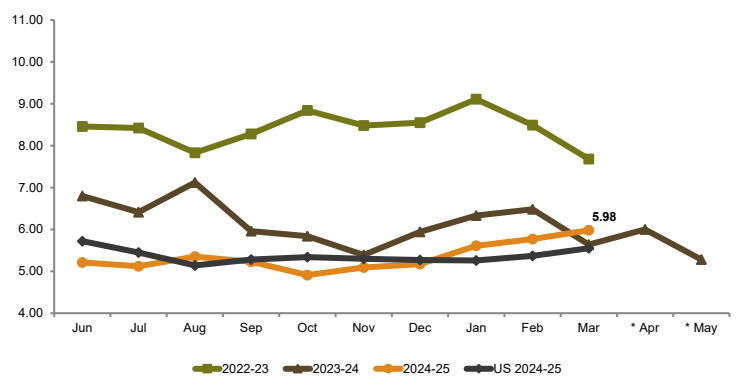
(Dollars per Bushel)



\* North Carolina prices for August 2023 were withheld to avoid disclosing data for individual operations or because of an insufficient number of reports to establish an estimate.

### MONTHLY PRICE RECEIVED FOR WINTER WHEAT

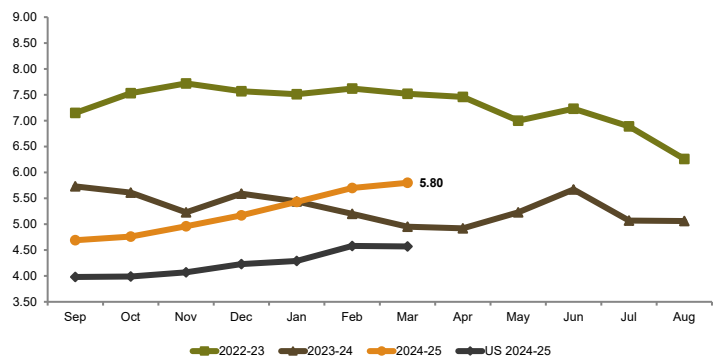
(Dollars per Bushel)



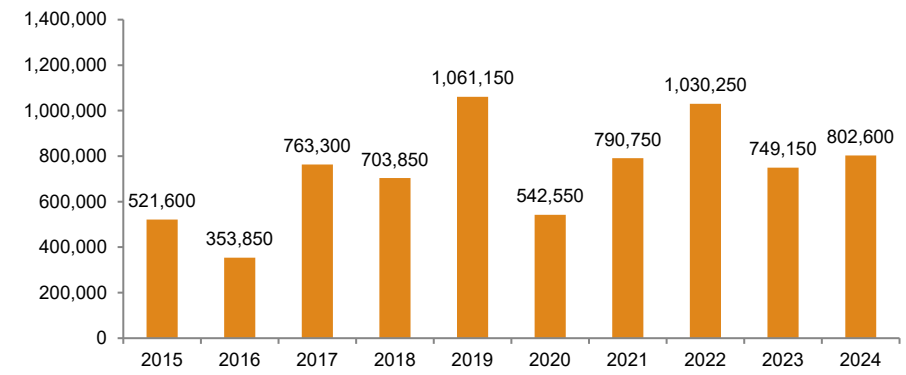
\* North Carolina prices for April and May 2023 were withheld to avoid disclosing data for individual operations or because of an insufficient number of reports to establish an estimate.

### MONTHLY PRICE RECEIVED FOR CORN

(Dollars per Bushel)



COTTON GINNINGS - RUNNING BALES GINNED



ON FARM HAY STOCKS

On farm hay stocks totaled 175,000 tons as of May 1, 2025, down 3% from the 180,000 tons reported the same time last year.

WINTER WHEAT

Winter wheat production in North Carolina is expected to total 18.76 million bushels for 2025, slightly down from the 18.81 million bushels produced in 2024. Yield per acre at 67 bushels is up 10 bushels per acre from last year's estimate of 57 bushels per acre.

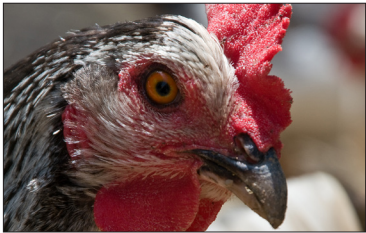
EGG PRODUCTION - March

State	Layers On Hand		Total Eggs Produced		Table Eggs		Hatching Eggs	
	2024	2025	2024	2025	2024	2025	2024	2025
	Thousands		Million Eggs					
Alabama	10,705	11,146	205.0	216.7	30.9	35.5	174.1	181.2
Georgia	20,139	19,776	442.6	447.4	243.7	253.1	198.9	194.3
North Carolina	16,121	13,451	361.8	292.8	195.8	132.4	166.0	160.4
South Carolina	3,784	4,084	85.8	96.5	62.6	72.2	23.2	24.3
United States	379,619	351,133	9,325.9	8,630.9	8,014.6	7,346.9	1,311.3	1,284.0

CHICKS HATCHED - March

State	Broiler-Type		
	2024	2025	Percent Change
	Thousand Head		+/-
Alabama	122,952	123,672	+1
Arkansas	89,062	92,243	+4
Delaware	19,707	20,138	+2
Georgia	125,970	118,816	-6
Kentucky	26,837	27,824	+4
Maryland	27,534	29,784	+8
Mississippi	61,687	63,918	+4
Missouri	31,802	31,777	0
North Carolina	88,064	88,239	0
Oklahoma	20,816	20,148	-3
Pennsylvania	29,526	30,245	+2
South Carolina	20,518	20,359	-1
Texas	66,494	67,218	+1
Virginia	19,618	20,089	+2
California, Tennessee, & West Virginia	54,894	54,887	0
Other States <sup>1</sup>	42,242	58,153	+38
United States	863,898	867,510	0

<sup>1</sup> Not published separately to avoid disclosing data for individual operations.

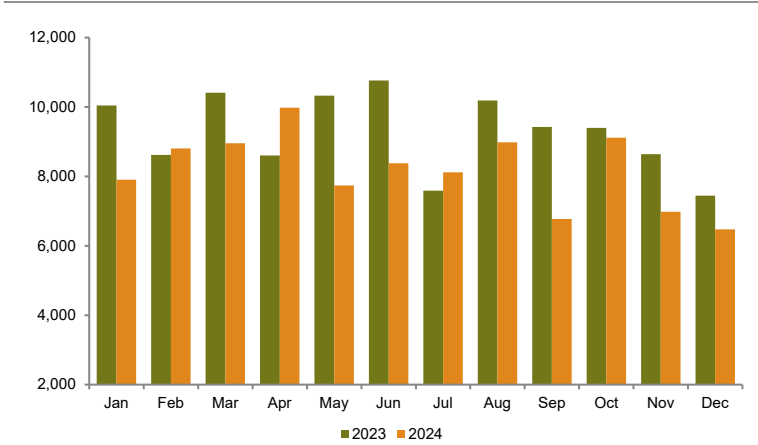




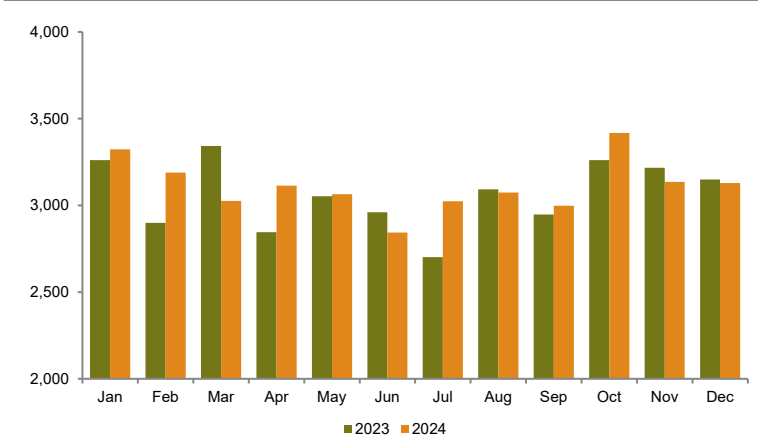
MILK PRODUCTION: January – March

State	Milk Cows <sup>1</sup>		Milk Production <sup>2</sup>		Percent Change
	2024	2025	2024	2025	
	<i>Thousand Head</i>		<i>Million Pounds</i>		
Kentucky	43.0	41.0	223.0	208.0	-6.7
North Carolina	38.0	36.0	228.0	207.0	-9.2
Tennessee	25.0	23.0	118.0	105.0	-11.0
Virginia	67.0	66.0	361.0	355.0	-1.7
West Virginia	4.0	(D)	15.0	(D)	(N/A)
United States	9,338.0	9,396.0	56,943.00	56,746.00	-0.3
<sup>1</sup> Includes dry cows. Excludes heifers not yet fresh. <sup>2</sup> Excludes milk sucked by calves. (D) Withheld to avoid disclosing data for individual operations.					

N.C. COMMERCIAL CATTLE SLAUGHTER - Total Live Weight  
(Thousand Pounds)



U.S. COMMERCIAL HOG SLAUGHTER - Total Live Weight  
(Million Pounds)





NORTH CAROLINA ANNUAL BLUEBERRY SUMMARY

Year	Harvested	Yield	Production	Utilized Production	Price	Value of Utilized Production
	<i>Acres</i>	<i>Lb per Acre</i>	<i>Thousand Lb.</i>		<i>Dollars</i>	<i>Thousand Dollars</i>
2020	8,600	4,510	38,800	38,490	1.52	58,526
2021	8,600	4,820	41,500	40,380	1.58	63,614
2022	8,600	5,080	43,700	43,530	1.84	79,893
2023	8,900	6,220	55,400	54,130	1.92	104,062
2024	8,000	6,270	50,200	49,650	1.59	78,830

