

SEPTEMBER



MONTHLY FARM REPORT

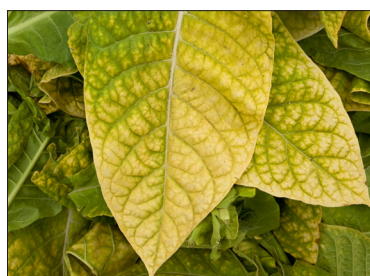
North Carolina Field Office



Post Office Box 27767 | Raleigh, North Carolina 27611 | Telephone: 919-707-3333 | Email: ncagstat@ncagr.gov

www.ncagr.gov/stats or www.nass.usda.gov

Released September 29, 2025



ACRES, YIELD, AND PRODUCTION - September 1, 2025

Crops	Unit	Harvested		Yield			Production		
		2024	2025	2024	2025		2024	2025	Percent Change
					August 1	September 1			
		Thousand Acres			Unit per Acre		Thousands		+/-
Corn for Grain	Bu.	815	885	87	143	148	70,905	130,980	+85
Cotton: Upland¹	Lb.	400	275	942	1084	943	785	540	-31
Peanuts	Lb.	129	139	4,400	4,200	4,400	567,600	611,600	+8
Soybeans	Bu.	1,610	1,630	39.0	40.0	39.0	62,790	63,570	+1
Tobacco: Flue Cured	Lb.	114	120	1,800	2,100	2,200	205,200	264,000	+29

¹ Production in 480-lb. net weight bales. Production ginned and to be ginned.

PEANUT production forecast at 611.6 million pounds is up 8% from last year.

CORN FOR GRAIN production forecast at 130.98 million bushels is up 85% from 2024.

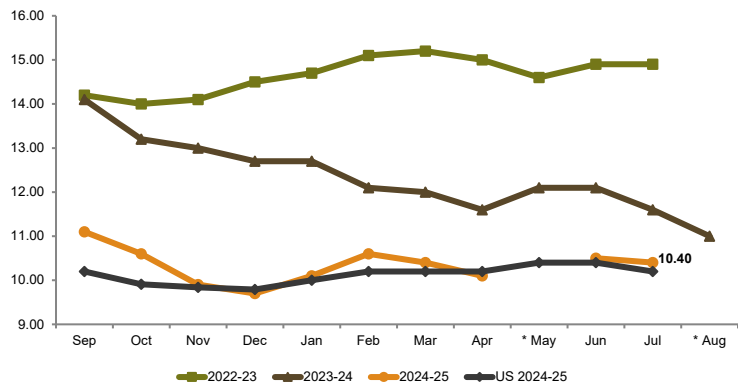
SOYBEAN production forecast at 63.57 million bushels is up 1% from last year.

COTTON production forecast at 540,000 bales is down 31% from 2024.



MONTHLY PRICE RECEIVED FOR SOYBEANS

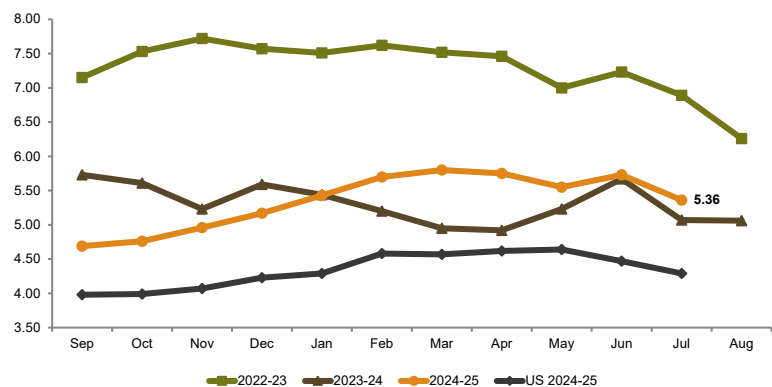
(Dollars per Bushel)



* North Carolina prices for August 2023 and May 2025 were withheld to avoid disclosing data for individual operations or because of an insufficient number of reports to establish an estimate.

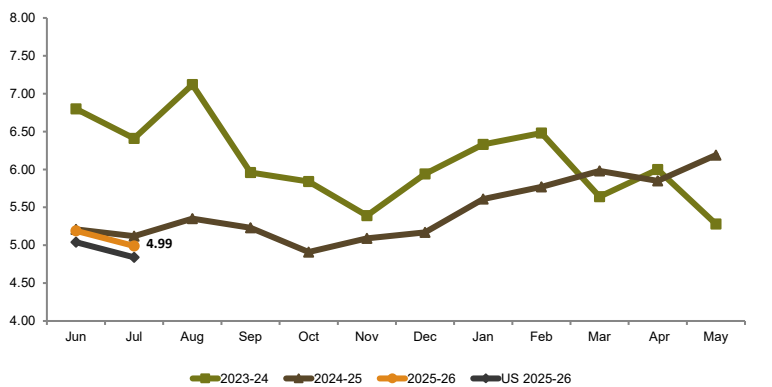
MONTHLY PRICE RECEIVED FOR CORN

(Dollars per Bushel)

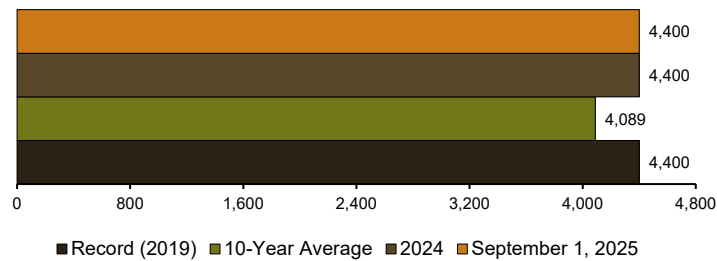


MONTHLY PRICE RECEIVED FOR WINTER WHEAT

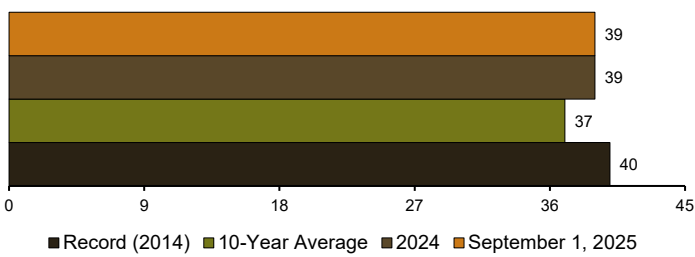
(Dollars per Bushel)



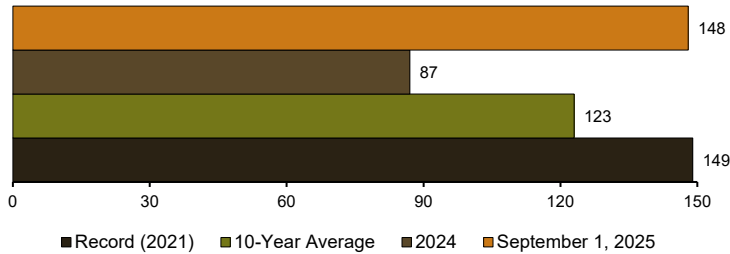
PEANUT YIELD (Pounds)



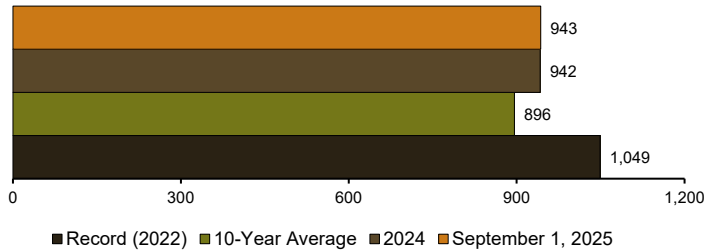
SOYBEAN YIELD (Bushels)



CORN FOR GRAIN YIELD (Bushels)



UPLAND COTTON YIELD (Pounds)





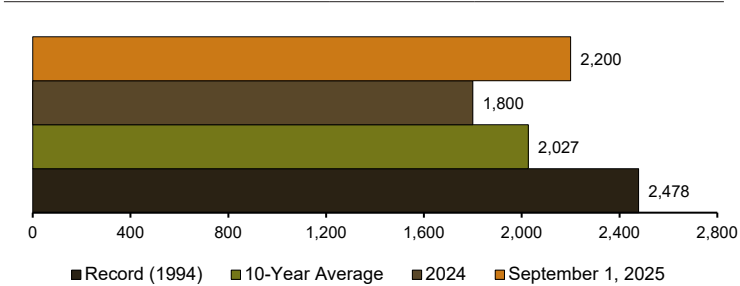
EGG PRODUCTION - July

State	Layers On Hand		Total Eggs Produced		Table Eggs		Hatching Eggs	
	2024	2025	2024	2025	2024	2025	2024	2025
	Thousands		Million Eggs					
Alabama	10,335	11,068	198.1	210.9	29.8	28.1	168.3	182.8
Georgia	19,720	19,069	439.0	419.3	241.1	236.7	197.9	182.6
North Carolina	16,163	13,854	369.0	305.6	207.7	142.7	161.3	162.9
South Carolina	3,647	3,741	83.8	83.0	60.9	55.7	22.9	27.3
Other States ¹	30,029	30,912	736.3	760.8	654.4	645.6	81.9	115.2
United States	368,248	358,543	9,018.9	8,791.4	7,718.9	7,484.8	1,300.0	1,306.6
(NA) Not available. ¹ Not published separately to avoid disclosing individual operations.								

CHICKS HATCHED - July

State	Broiler-Type		
	2024	2025	Percent Change
	Thousands		+/-
Alabama	123,244	124,028	+1
Arkansas	89,457	91,653	+2
Delaware	19,108	19,410	+2
Georgia	125,246	122,483	-2
Kentucky	27,901	29,510	+6
Maryland	27,932	29,479	+6
Mississippi	63,660	64,451	+1
Missouri	31,644	32,571	+3
North Carolina	89,504	91,242	+2
Oklahoma	20,720	20,452	-1
Pennsylvania	30,168	31,414	+4
South Carolina	20,002	20,253	+1
Texas	67,252	68,890	+2
Virginia	19,839	19,720	-1
California, Tennessee, & West Virginia	54,691	54,714	0
Other States ¹	43,185	60,143	+39
United States	870,062	880,413	+1
¹ Not published separately to avoid disclosing data for individual operations.			

FLUE-CURED TOBACCO YIELD (Pounds)





BEES - Number of Colonies, Maximum, Lost, Percent Lost, Added, Renovated, and Percent Renovated with Five or More Colonies

Dates	Number of Colonies	Quarter	Maximum Colonies ¹	Lost Colonies	Percent Lost ²	Added Colonies	Renovated Colonies ³	Percent Renovated ⁴
	<i>Number</i>		<i>Number</i>	<i>Number</i>	<i>Percent</i>	<i>Number</i>	<i>Number</i>	<i>Percent</i>
2024								
January 1	25,000	January-March	27,000	5,500	20	5,000	3,100	11
April 1	26,000	April - June	26,000	1,700	7	6,000	5,000	19
July 1	26,000	July - September	28,000	2,800	10	1,300	1,700	6
October 1	26,000	October - December	26,000	2,900	11	570	2,100	8
2025								
January 1	24,000	January-March	28,000	2,500	9	4,000	4,600	16
April 1	27,000	April - June	27,000	2,300	9	6,500	3,500	13

¹ Colonies on January 1, April 1, July 1 or October 1 for the specified quarter plus all colonies moved into that state during the quarter. ² Percent lost is the number of lost colonies divided by maximum colonies. ³ Defined as any surviving colony that was requeneered or received new honey bees through nuc or package. ⁴ Percent renovated is the number of renovated colonies divided by maximum colonies.

BEES - Colony Health Stressors with Five or More Colonies

Quarter	Varroa mites	Other pests and parasites ¹	Diseases ²	Pesticides	Other ³	Unknown
	<i>Percent</i>					
2024						
January-March	29.2	1.2	(Z)	-	1.6	2.5
April-June	16.2	3.5	(Z)	(Z)	0.8	1.0
July-September	14.0	6.7	1.1	0.7	1.7	1.7
October-December	20.7	11.2	(Z)	1.1	1.9	2.9
2025						
January-March	6.0	3.2	(Z)	(Z)	2.3	4.5
April-June	26.3	6.9	0.6	0.7	2.0	1.6

(Z) - Less than half of the unit shown. - Represents zero. ¹ Tracheal mites, nosema, hive beetle, wax moths, etc. ² Includes American and European foulbrood, chalkbrood, stonebrood, paralysis (acute and chronic), kashmir, deformed wing, sacbrood, IAPV, Lake Sinai II, etc. ³ Includes weather, starvation, insufficient forage, queen failure, hive damage/destroyed, etc.