



United States Department of Agriculture
National Agricultural Statistics Service



Slaughter

Data Relating to August, 2022

Southern Plains Regional Field Office · Post Office Box 70, Austin, Texas 78767 · 800-626-3142 · www.nass.usda.gov
Cooperating with the Oklahoma Department of Agriculture, Food and Forestry and Texas Department of Agriculture

U.S. Commercial Red Meat Production Up 5 Percent

Thank you to all those who respond to the monthly slaughter report. Without your participation we could not provide you with the timely data that is necessary in today's fast, moving economy. This report is a summary of slaughter reports for Oklahoma, and Texas, which together comprise the Southern Plains region. Additionally, this report includes a summary of national data.

Commercial Red Meat Production, August 2021 and 2022

State	August 2021	July 2022	August 2022	August 2022 as % of 2021
	million pounds	million pounds	million pounds	percent
Oklahoma	96.0	88.8	101.1	105
Texas	396.9	395.0	424.2	107
United States	4,589.7	4,233.6	4,826.0	105

Commercial Cattle Slaughter, August 2021 and 2022

State	Number Slaughtered		Total Live Weight		Average Live Weight	
	2021	2022	2021	2022	2021	2022
	head	head	pounds	pounds	pounds	pounds
Oklahoma	3,100	8,200	3,493,000	9,705,000	1,118	1,180
Texas	500,500	544,700	648,390,000	694,098,000	1,299	1,280
United States	2,886,900	3,076,200	3,900,068,000	4,133,689,000	1,354	1,348

Commercial Hog Slaughter, August 2021 and 2022

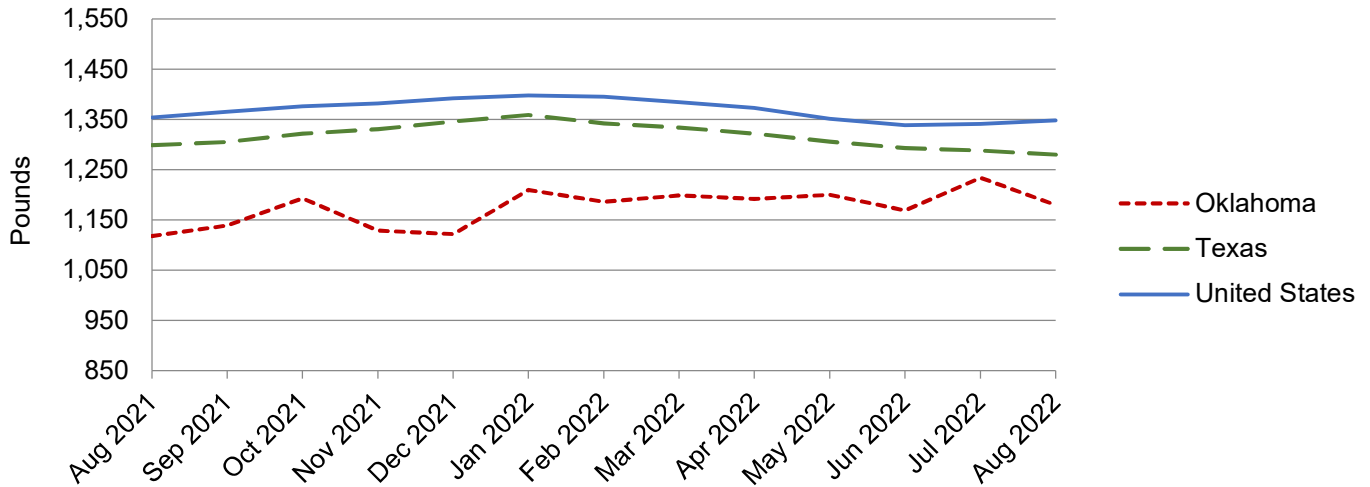
State	Number Slaughtered		Total Live Weight		Average Live Weight	
	2021	2022	2021	2022	2021	2022
	head	head	pounds	pounds	pounds	pounds
Oklahoma	445,100	450,800	124,287,000	127,708,000	279	283
Texas	22,500	23,100	5,184,000	4,436,000	231	192
United States	10,616,000	10,987,200	2,970,742,000	3,095,197,000	280	282

Commercial Sheep and Lamb Slaughter, August 2021 and 2022

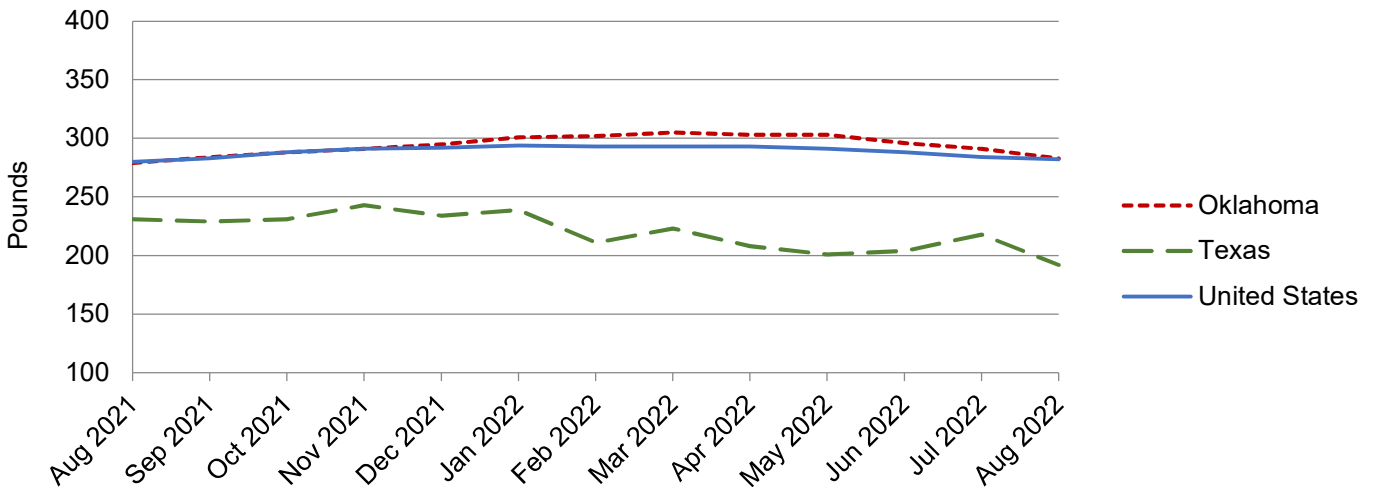
State	Number Slaughtered		Total Live Weight		Average Live Weight	
	2021	2022	2021	2022	2021	2022
	head	head	pounds	pounds	pounds	pounds
Oklahoma	(D)	(D)	(D)	(D)	(D)	(D)
Texas	22,400	23,800	2,268,000	2,690,000	101	113
United States	178,400	182,000	20,640,000	23,093,000	116	127

(D) Withheld to avoid disclosing data for individual operations.

Cattle: Live Weight per Head, Southern Plains and U.S., 2021-2022



Hogs: Live Weight per Head, Southern Plains and U.S., 2021-2022



NASS provides accurate, timely, useful and objective statistics in service to U.S. agriculture. In order to view the full national report, please visit the following website: www.nass.usda.gov/Publications/.